

# FCC SAR Test Report

## FCC ID:RWO-RZ090508

**Report No.** : BTL-FCC SAR-1-2309C037  
**Equipment** : Notebook PC  
**Model Name** : RZ09-0508  
**Brand Name** : RAZER  
**Applicant** : Razer Inc.  
**Address** : 9 Pasteur, Suite 100, Irvine, CA92618, USA.  
**Radio Function** : Bluetooth, WLAN 2.4G, WLAN 5G  
**Standard(s)** : **KDB447498 D04** Interim General RF Exposure Guidance v01  
**KDB248227 D01** 802.11 Wi-Fi SAR v02r02  
**KDB865664 D01** SAR measurement 100 MHz to 6 GHz v01r04  
**KDB865664 D02** SAR Reporting v01r02  
**KDB616217 D04** SAR for laptop and Tablets v01r02  
**FCC§2.1093** Radiofrequency radiation exposure evaluation: portable devices  
**IEEE C95.1:2019** Safety Levels with Respect to Human Exposure to Radio Frequency Electromagnetic Fields, 3 kHz – 300 GHz.  
**IEEE Std 1528:2013** Recommended Practice for Determining the Peak Spatial-Average Specific Absorption Rate (SAR) in the Human Head from Wireless Communications Devices: Measurement Techniques

**Date of Receipt** : Sep. 21, 2023  
**Date of Test** : Nov. 7, 2023 ~ Dec. 18, 2023  
**Issued Date** : Jan. 5, 2024

The above equipment has been tested and found in compliance with the requirement of the above standards by BTL Inc.

**Prepared by** :

*Jerry Chuang*

Jerry Chuang, Supervisor



**Approved by** :

*Peter Chen*

Peter Chen, Assistant Manager

**BTL Inc.**

No.18, Ln. 171, Sec. 2, Jiuzong Rd., Neihu Dist., Taipei City 114, Taiwan

Tel: +886-2-2657-3299

Fax: +886-2-2657-3331

Web: www.newbtl.com

**Declaration**

**BTL** represents to the client that testing is done in accordance with standard procedures as applicable and that test instruments used has been calibrated with standards traceable to international standard(s) and/or national standard(s).

**BTL's** reports apply only to the specific samples tested under conditions. It is manufacture's responsibility to ensure that additional production units of this model are manufactured with the identical electrical and mechanical components. **BTL** shall have no liability for any declarations, inferences or generalizations drawn by the client or others from **BTL** issued reports.

This report is the confidential property of the client. As a mutual protection to the clients, the public and ourselves, the test report shall not be reproduced, except in full, without our written approval.

**BTL's** laboratory quality assurance procedures are in compliance with the **ISO/IEC 17025** requirements, and accredited by the conformity assessment authorities listed in this test report.

**BTL** is not responsible for the sampling stage, so the results only apply to the sample as received.

The information, data and test plan are provided by manufacturer which may affect the validity of results, so it is manufacturer's responsibility to ensure that the apparatus meets the essential requirements of applied standards and in all the possible configurations as representative of its intended use.

**Limitation**

For the use of the authority's logo is limited unless the Test Standard(s)/Scope(s)/Item(s) mentioned in this test report is (are) included in the conformity assessment authorities acceptance respective.

Please note that the measurement uncertainty is provided for informational purpose only and are not use in determining the Pass/Fail results.

<b>Table of Contents</b>	<b>Page</b>
<b>1. GENERAL INFORMATION</b>	<b>6</b>
1.1. GENERAL DESCRIPTION OF EUT	6
<b>2. RF EMISSIONS MEASUREMENT</b>	<b>7</b>
2.1. TEST FACILITY	7
2.2. MEASUREMENT UNCERTAINTY	8
2.3. WLAN ANTENNA INFORMATION:	10
2.4. THE MAXIMUM SAR-1G & POWER DENSITY VALUES	11
2.5. LABORATORY ENVIRONMENT	11
2.6. MAIN TEST INSTRUMENTS	12
<b>3. SAR MEASUREMENTS SYSTEM CONFIGURATION</b>	<b>13</b>
3.1. SAR MEASUREMENT SETUP	13
3.1.1. TEST SETUP LAYOUT	13
3.2. DASY5 E-FIELD PROBE SYSTEM	14
3.2.1. EX3DV4 PROBE SPECIFICATION	14
3.2.2. E-FIELD PROBE CALIBRATION	15
3.2.3. OTHER TEST EQUIPMENT	16
3.2.4. SCANNING PROCEDURE	17
3.2.5. DATA STORAGE AND EVALUATION	18
3.2.6. DATA EVALUATION BY SEMCAD	19
<b>4. TISSUE-EQUIVALENT LIQUID</b>	<b>21</b>
4.1. TISSUE-EQUIVALENT LIQUID INGREDIENTS	21
4.2. TISSUE-EQUIVALENT LIQUID PROPERTIES	22
<b>5. SYSTEM CHECK</b>	<b>24</b>
5.1. DESCRIPTION OF SYSTEM CHECK	24
5.2. DESCRIPTION OF SYSTEM CHECK	25
<b>6. OPERATIONAL CONDITIONS DURING TEST</b>	<b>26</b>
6.1. GENERAL DESCRIPTION OF TEST PROCEDURES	26
6.2. TEST POSITION ANTENNA LOCATION	26
6.3. TEST POSITION OF PORTABLE DEVICES	26
6.4. TEST POSITION	27
6.4.1. BODY TEST CONFIGURATION	27
<b>7. SAR MEASUREMENT VARIABILITY AND UNCERTAINTY</b>	<b>29</b>
7.1. SAR MEASUREMENT VARIABILITY	29
7.2. WIFI TEST CONFIGURATION	30
7.3. WLAN 2.4G SAR TEST REQUIREMENTS	33
7.4. WLAN 5G SAR TEST REQUIREMENTS	34
7.5. OFDM TRANSMISSION MODE AND SAR TEST CHANNEL SELECTION	34
7.6. INITIAL TEST CONFIGURATION PROCEDURE	34
<b>8. CONDUCTED POWER RESULTS</b>	<b>35</b>
8.1. CONDUCTED POWER MEASUREMENTS OF BLUETOOTH	35
8.2. CONDUCTED POWER MEASUREMENTS OF WI-FI 2.4GHZ BAND	36

<b>8.3. CONDUCTED POWER MEASUREMENTS OF 5G UNII_1</b>	<b>37</b>
<b>8.4. CONDUCTED POWER MEASUREMENTS OF 5G UNII_2A</b>	<b>38</b>
<b>8.5. CONDUCTED POWER MEASUREMENTS OF 5G UNII_2C</b>	<b>39</b>
<b>8.6. CONDUCTED POWER MEASUREMENTS OF 5G UNII_3</b>	<b>40</b>
<b>8.7. CONDUCTED POWER MEASUREMENTS OF 5G UNII_4</b>	<b>41</b>
<b>8.8. SAR TEST RESULTS</b>	<b>42</b>
<b>9. SAR TEST RESULTS</b>	<b>43</b>
<b>9.1. BODY SAR TEST RESULTS</b>	<b>43</b>
<b>10. SIMULTANEOUS TRANSMISSION CONDITIONS</b>	<b>45</b>
<b>10.1. STAND-ALONE SAR TEST EXCLUSION</b>	<b>45</b>
<b>10.2. ABOUT BT/WIFI</b>	<b>46</b>
<b>11. TEST LAYOUT</b>	<b>48</b>

**REPORT ISSUED HISTORY**

Report Version	Description	Issued Date
R00	Original Issue.	2023/12/19
R01	Revised D2450V2 system check result.	2024/1/5

## 1. GENERAL INFORMATION

### 1.1. GENERAL DESCRIPTION OF EUT

Equipment	Notebook PC		
Model Name	RZ09-0508		
Brand Name	RAZER		
Power Rating	Brand : RAZER Model : RC30-024801 Input : 100V-240V~3.6A 50/60Hz Output : 19.5V 11.8A		
Battery Information	Brand Name : RAZER Model Name : RC30-0482 Rated Capacity : 4422mAh/68.1Wh Rated Voltage : 15.4V Limited Charge Voltage : 17.6V		
WIFI+BT Module	QCNCM865		
Operation Frequency	Function	Band	Frequency (MHz)
	WiFi	2.4G	TX : 2412 - 2472 MHz
		5G_UNII 1	TX : 5180 - 5250 MHz
		5G_UNII 2a	TX : 5250 - 5350 MHz
		5G_UNII 2c	TX : 5500 - 5700 MHz
		5G_UNII 3	TX : 5745 - 5825 MHz
		5G_UNII 4	TX : 5845 - 5885 MHz
	Bluetooth	Basic Rate (BR)	TX : 2402 - 2480 MHz
		Enhance Data Rate	TX : 2402 - 2480 MHz
Bluetooth Low Energy		TX : 2402 - 2480 MHz	
Sample Status	Engineering Sample		
EUT Modification(s)	N/A		

The above equipment has been tested and found compliance with the requirement of the relative standards by BTL Inc. The test data, data evaluation, and equipment configuration contained in our test report were obtained utilizing the test procedures, test instruments, test sites that has been accredited by the Authority of TAF according to the ISO/IEC 17025 quality assessment standard and technical standard(s).

## 2. RF EMISSIONS MEASUREMENT

### 2.1. TEST FACILITY

The test locations stated below are under the TAF Accreditation Number 0659.

The test facilities used to collect the test data in this report is **SAR Test room** at the location of No. 68-1, Ln. 169, Sec.2, Datong Rd., Xizhi Dist., New Taipei City 221, Taiwan.  
(FCC DN: TW0659)

SAR 01

SAR 02

SAR 03

## 2.2. MEASUREMENT UNCERTAINTY

Uncertainty Budget for Frequency range of 300 MHz to 3 GHz

Error Description	Uncertainty Value (± %)	Probability Distribution	Divisor	Ci (1g)	Ci (10g)	Standard Uncertainty (1g)	Standard Uncertainty (10g)	Vi V <sub>eff</sub>
<b>Measurement System</b>								
Probe Calibration	6.0	Normal	1	1	1	± 6.0 %	± 6.0 %	∞
Axial Isotropy	4.7	Rectangular	$\sqrt{3}$	0.7	0.7	± 1.9 %	± 1.9 %	∞
Hemispherical Isotropy	9.6	Rectangular	$\sqrt{3}$	0.7	0.7	± 3.9 %	± 3.9 %	∞
Boundary Effects	1	Rectangular	$\sqrt{3}$	1	1	± 0.6 %	± 0.6 %	∞
Linearity	4.7	Rectangular	$\sqrt{3}$	1	1	± 2.7 %	± 2.7 %	∞
Detection Limits	1	Rectangular	$\sqrt{3}$	1	1	± 0.6 %	± 0.6 %	∞
Modulation response	2.4	Rectangular	$\sqrt{3}$	1	1	± 1.4 %	± 1.4 %	∞
Readout Electronics	0.3	Normal	1	1	1	± 0.3 %	± 0.3 %	∞
Response Time	0.8	Rectangular	$\sqrt{3}$	1	1	± 0.5%	± 0.5 %	∞
Integration Time	2.6	Rectangular	$\sqrt{3}$	1	1	± 1.5 %	± 1.5 %	∞
RF Ambient – Noise	3	Rectangular	$\sqrt{3}$	1	1	± 1.7 %	± 1.7 %	∞
RF Ambient– Reflections	3	Rectangula	$\sqrt{3}$	1	1	± 1.7 %	± 1.7 %	∞
Probe Positioner	0.02	Rectangular	$\sqrt{3}$	1	1	± 0.0 %	± 0.0 %	∞
Probe Positioning	0.4	Rectangular	$\sqrt{3}$	1	1	± 0.2 %	± 0.2 %	∞
Max.SAR Evaluation	2	Rectangular	$\sqrt{3}$	1	1	± 1.2 %	± 1.2 %	∞
<b>Test Sample Related</b>								
Device Positioning	2.9	Normal	1	1	1	± 2.9 %	± 2.9 %	145
Device Holder	3.6	Normal	1	1	1	± 3.6 %	± 3.6 %	5
Power Drift	5.0	Rectangular	$\sqrt{3}$	1	1	± 2.9 %	± 2.9 %	∞
<b>Phantom and Setup</b>								
Phantom Production Tolerances	6.1	Rectangular	$\sqrt{3}$	1	1	± 3.5 %	± 3.5 %	∞
SAR correction	1.9	Rectangular	$\sqrt{3}$	1	0.84	± 1.9 %	± 1.6 %	
Liquid Conductivity (mea.)	2.5	Rectangular	$\sqrt{3}$	0.78	0.71	± 2.0 %	± 1.8 %	∞
Liquid Permittivity (mea.)	2.5	Rectangular	$\sqrt{3}$	0.26	0.26	± 0.6 %	± 0.7 %	∞
Temp. unc. - Conductivity	3.4	Rectangular	$\sqrt{3}$	0.78	0.71	± 1.5 %	± 1.4 %	∞
Temp. unc. - Permittivity	0.4	Rectangular	$\sqrt{3}$	0.23	0.26	± 0.1 %	± 0.1 %	∞
<b>Combined Standard Uncertainty (K = 1)</b>						± 11.28 %	± 11.19 %	361
<b>Expanded Uncertainty (K = 2)</b>						± 22.56 %	± 22.37 %	



## Uncertainty Budget for Frequency range of 3 GHz to 6 GHz

Error Description	Uncertainty Value (± %)	Probability Distribution	Divisor	Ci (1g)	Ci (10g)	Standard Uncertainty (1g)	Standard Uncertainty (10g)	Vi V <sub>eff</sub>
<b>Measurement System</b>								
Probe Calibration	7.00	Normal	1	1	1	± 7.0 %	± 7.00 %	∞
Axial Isotropy	4.7	Rectangular	$\sqrt{3}$	0.7	0.7	± 1.9 %	± 1.9 %	∞
Hemispherical Isotropy	9.6	Rectangular	$\sqrt{3}$	0.7	0.7	± 3.9 %	± 3.9 %	∞
Boundary Effects	2	Rectangular	$\sqrt{3}$	1	1	± 1.2 %	± 1.2 %	∞
Linearity	4.7	Rectangular	$\sqrt{3}$	1	1	± 2.7 %	± 2.7 %	∞
Detection Limits	1	Rectangular	$\sqrt{3}$	1	1	± 0.6 %	± 0.6 %	∞
Modulation response	2.4	Rectangular	$\sqrt{3}$	1	1	± 1.4 %	± 1.4 %	∞
Readout Electronics	0.3	Normal	1	1	1	± 0.3 %	± 0.3 %	∞
Response Time	0.8	Rectangular	$\sqrt{3}$	1	1	± 0.5 %	± 0.5 %	∞
Integration Time	2.6	Rectangular	$\sqrt{3}$	1	1	± 1.5 %	± 1.5 %	∞
RF Ambient – Noise	3	Rectangular	$\sqrt{3}$	1	1	± 1.7 %	± 1.7 %	∞
RF Ambient– Reflections	3	Rectangular	$\sqrt{3}$	1	1	± 1.7 %	± 1.7 %	∞
Probe Positioner	0.04	Rectangular	$\sqrt{3}$	1	1	± 0.0 %	± 0.0 %	∞
Probe Positioning	0.8	Rectangular	$\sqrt{3}$	1	1	± 0.5 %	± 0.5 %	∞
Max.SAR Evaluation	4	Rectangular	$\sqrt{3}$	1	1	± 2.3 %	± 2.3 %	∞
<b>Test Sample Related</b>								
Device Positioning	2.9	Normal	1	1	1	± 2.9 %	± 2.9 %	145
Device Holder	3.6	Normal	1	1	1	± 3.6 %	± 3.6 %	5
Power Drift	5.0	Rectangular	$\sqrt{3}$	1	1	± 2.9 %	± 2.9 %	∞
<b>Phantom and Setup</b>								
Phantom Production Tolerances	6.6	Rectangular	$\sqrt{3}$	1	1	± 3.8 %	± 3.8 %	∞
SAR correction	1.9	Rectangular	$\sqrt{3}$	1	0.84	± 1.9 %	± 1.6 %	
Liquid Conductivity (mea.)	2.5	Rectangular	$\sqrt{3}$	0.78	0.71	± 2.0 %	± 1.8 %	∞
Liquid Permittivity (mea.)	2.5	Rectangular	$\sqrt{3}$	0.26	0.26	± 0.6 %	± 0.7 %	∞
Temp. unc. - Conductivity	3.4	Rectangular	$\sqrt{3}$	0.78	0.71	± 1.5 %	± 1.4 %	∞
Temp. unc. - Permittivity	0.4	Rectangular	$\sqrt{3}$	0.23	0.26	± 0.1 %	± 0.1 %	∞
<b>Combined Standard Uncertainty (K = 1)</b>						± 12.14 %	± 12.06 %	361
<b>Expanded Uncertainty (K = 2)</b>						± 24.28 %	± 24.12 %	

### 2.3. WLAN ANTENNA INFORMATION:

Ant.	Brand	Model	Type	Frequency Range (MHz)	Gain (dBi)
Main	Amphenol Taiwan Corporation	BY507A-16-001-C	PIFA	2400-2483.5	3.16
				5150-5250	2.67
				5250-5350	2.83
				5470-5725	2.99
				5725-5850	3.66
				5850-5895	3.60
Aux	Amphenol Taiwan Corporation	BY507A-16-002-C	PIFA	2400-2483.5	3.09
				5150-5250	2.79
				5250-5350	2.81
				5470-5725	4.47
				5725-5850	3.51
				5850-5895	3.01

**Note:**

The above Antenna information are derived from the antenna data sheet provided by manufacturer and for more detailed features description, please refer to the manufacturer's specifications, the laboratory shall not be held responsible.

## 2.4. THE MAXIMUM SAR-1G & POWER DENSITY VALUES

Band	Mode	Highest Body Reported SAR-1g(W/kg)
FHSS	BLE_1M	0.143
DTS	Wi-Fi 2.4G	0.542
UNII	5G UNII 1&2a	0.612
	5G UNII 2c	0.860
	5G UNII 3	0.889
	6E UNII 4	0.686

Note:

- 1) The device is in compliance with Specific Absorption Rate(SAR)for general population uncontrolled exposure limits according to the FCC rule §2.1093, the ANSI C95.1:2019/IEEE C95.1:2019, the NCRP Report Number 86 for uncontrolled environment and had been tested in accordance with the measurement methods and procedures specified in IEC/IEEE 62209-1528:2020 .

## 2.5. LABORATORY ENVIRONMENT

Temperature	Min. = 18°C, Max. = 25°C
Relative humidity	Min. = 30%, Max. = 70%
Ground system resistance	< 0.5 Ω
Ambient noise is checked and found very low and in compliance with requirement of standards. Reflection of surrounding objects is minimized and in compliance with requirement of standards.	

## 2.6. MAIN TEST INSTRUMENTS

Item	Equipment	Manufacturer	Model	Serial No.	Cal. Date	Cal. Interval
1	DASY5	Speag	DASY 5 (Version 52.10.4.1527)	N/A	N/A	N/A
2	Data Acquisition Electronics	Speag	DAE4	1486	Jun. 16, 2023	1 Year
3	E-field Probe	Speag	EX3DV4	7369	May. 22, 2023	1 Year
4	System Validation Dipole	Speag	D2450V2	973	Feb. 08, 2021	3 Year
5	System Validation Dipole	Speag	D5GHzV2	1221	Feb. 09, 2021	3 Year
6	ELI4 Phantom	Speag	ELI4 Phantom V5.0	1240	N/A	N/A
7	ENA Network Analyzer	Agilent	E5071C	MY46524658	Mar. 17, 2023	1 Year
8	Signal Generator	R&S	SMR40	100502	Feb. 23, 2023	1 Year
9	Spectrum Analyzer	R&S	FSV7	103032	Aug. 10, 2023	1 Year
10	Power Meter	Anritsu	ML2495A	1128008	May. 12, 2023	1 Year
11	Power Sensor	Anritsu	MA2411B	1126001	May. 12, 2023	1 Year
12	Dielectric Probe Kit	Agilent	85070E	2593	N/A	N/A
13	Low pass filter	Mini-Circuits	SLP-2950+	M108294	N/A	N/A
14	Power Amplifier	Mini-Circuits	ZVE-2W-272+	N650001538	N/A	N/A
15	Power Amplifier	Mini-Circuits	ZVE-8G+	N628801631	N/A	N/A
16	Power Amplifier	EMCI	EMC053035	980869	N/A	N/A
17	Thermometer	PA	TA298	h001	Mar. 21, 2023	1 Year
18	Directional Coupler	Woken	50W Coupler	DOM5CIW3E2	N/A	N/A
19	Attenuator	Woken	WATT-518FS-10	N/A	N/A	N/A

Remark: "N/A" denotes no model name, serial No. or calibration specified.

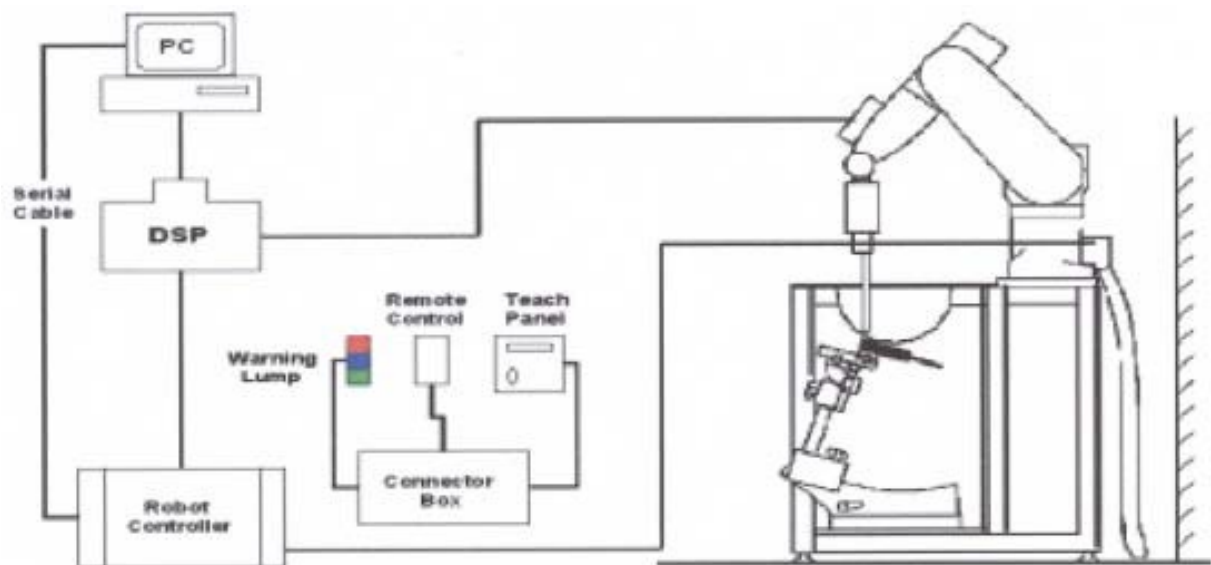
### 3. SAR MEASUREMENTS SYSTEM CONFIGURATION

#### 3.1. SAR MEASUREMENT SETUP

The DASY5 system for performing compliance tests consists of the following items:

1. A standard high precision 6-axis robot (Stäubli RX family) with controller and software. An arm extension for accommodating the data acquisition electronics (DAE).
2. A dosimetric probe, i.e. an isotropic E-field probe optimized and calibrated for usage in tissue simulating liquid. The probe is equipped with an optical surface detector system.
3. A data acquisition electronic (DAE) which performs the signal amplification, signal multiplexing, AD-conversion, offset measurements, mechanical surface detection, collision detection, etc. The unit is battery powered with standard or rechargeable batteries. The signal is optically transmitted to the EOC.
4. A unit to operate the optical surface detector which is connected to the EOC.
5. The Electro-Optical Coupler (EOC) performs the conversion from the optical into a digital electric signal of the DAE. The EOC is connected to the DASY5 measurement server.
6. The DASY5 measurement server, which performs all real-time data evaluation for field measurements and surface detection, controls robot movements and handles safety operation. A computer operating Windows.
7. DASY5 software and SEMCAD data evaluation software.
8. Remote control with teach panel and additional circuitry for robot safety such as warning lamps, etc.
9. The generic twin phantom enabling the testing of left-hand and right-hand usage.
10. The device holder for handheld mobile phones.
11. Tissue simulating liquid mixed according to the given recipes.
12. System validation dipoles allowing to validate the proper functioning of the system.

##### 3.1.1. TEST SETUP LAYOUT

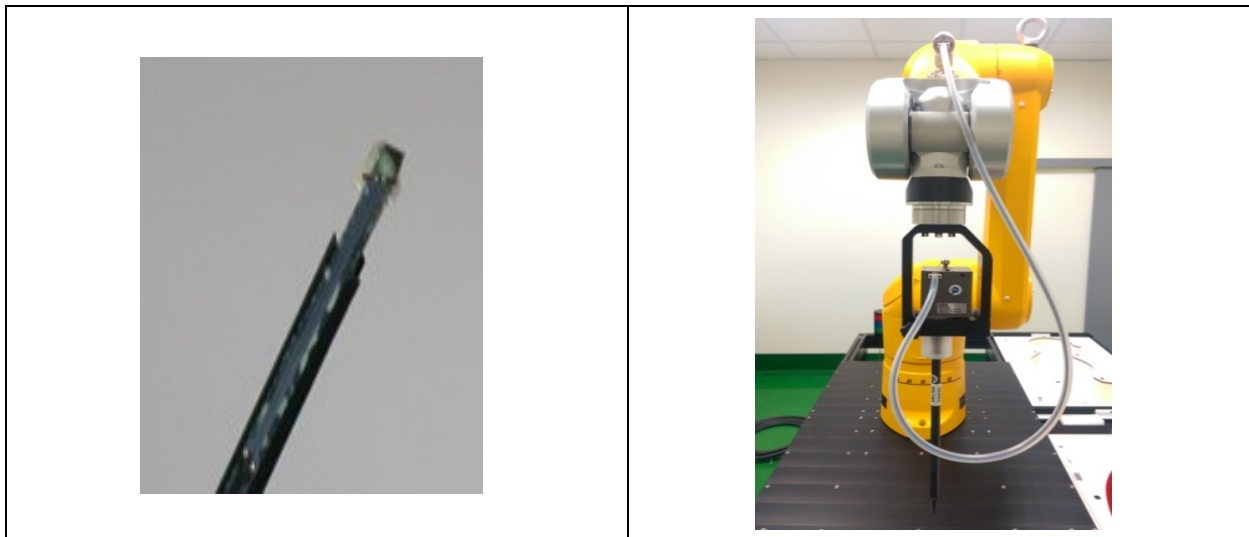


### 3.2. DASY5 E-FIELD PROBE SYSTEM

The SAR measurements were conducted with the dosimetric probe EX3DV4 (manufactured by SPEAG), designed in the classical triangular configuration and optimized for dosimetric evaluation.

#### 3.2.1. EX3DV4 PROBE SPECIFICATION

<b>Construction</b>	Symmetrical design with triangular core Interleaved sensors Built-in shielding against static charges PEEK enclosure material (resistant to organic solvents, e.g., DGBE)
<b>Calibration</b>	ISO/IEC 17025 calibration service available
<b>Frequency</b>	10 MHz to 6 GHz Linearity: $\pm 0.2$ dB (30 MHz to 6 GHz)
<b>Directivity</b>	$\pm 0.3$ dB in HSL (rotation around probe axis) $\pm 0.5$ dB in tissue material (rotation normal to probe axis)
<b>Dynamic Range</b>	10 $\mu$ W/g to > 100 mW/g Linearity: $\pm 0.2$ dB
<b>Dimensions</b>	Overall length: 330 mm (Tip: 20 mm) Tip diameter: 2.5 mm (Body: 12 mm) Distance from probe tip to dipole centers: 1.0 mm



EX3DV4 E-field Probe

### 3.2.2. E-FIELD PROBE CALIBRATION

Each probe is calibrated according to a dosimetric assessment procedure with accuracy better than  $\pm 10\%$ . The spherical isotropy was evaluated and found to be better than  $\pm 0.25\text{dB}$ . The sensitivity parameters (NormX, NormY, NormZ), the diode compression parameter (DCP) and the conversion factor (ConvF) of the probe are tested.

The free space E-field from amplified probe outputs is determined in a test chamber. This is performed in a TEM cell for frequencies below 1 GHz, and in a wave guide above 1 GHz for free space. For the free space calibration, the probe is placed in the volumetric center of the cavity and at the proper orientation with the field. The probe is then rotated 360 degrees.

E-field temperature correlation calibration is performed in a flat phantom filled with the appropriate simulated brain tissue. The measured free space E-field in the medium correlates to temperature rise in a dielectric medium. For temperature correlation calibration a RF transparent thermistor-based temperature probe is used in conjunction with the E-field probe.

$$\text{SAR} = C \frac{\Delta T}{\Delta t}$$

Where:  $\Delta t$  = Exposure time (30 seconds),

C = Heat capacity of tissue (brain or muscle),

$\Delta T$  = Temperature increase due to RF exposure.

Or 
$$\text{SAR} = \frac{|E|^2 \sigma}{\rho}$$

Where:  $\sigma$  = Simulated tissue conductivity,

$\rho$  = Tissue density ( $\text{kg}/\text{m}^3$ ).


### 3.2.3. OTHER TEST EQUIPMENT


#### 3.2.3.1. DEVICE HOLDER FOR TRANSMITTERS

**Construction:** Simple but effective and easy-to-use extension for Mounting Device that facilitates the testing of larger devices according to IEC 62209-2 (e.g., laptops, cameras, etc.) It is lightweight and fits easily on the upper part of the Mounting Device in place of the phone positioner. The extension is fully compatible with the Twin SAM, ELI4 and SAM v6.0 Phantoms.

**Material:** POM, Acrylic glass, Foam

#### 3.2.3.2. PHANTOM

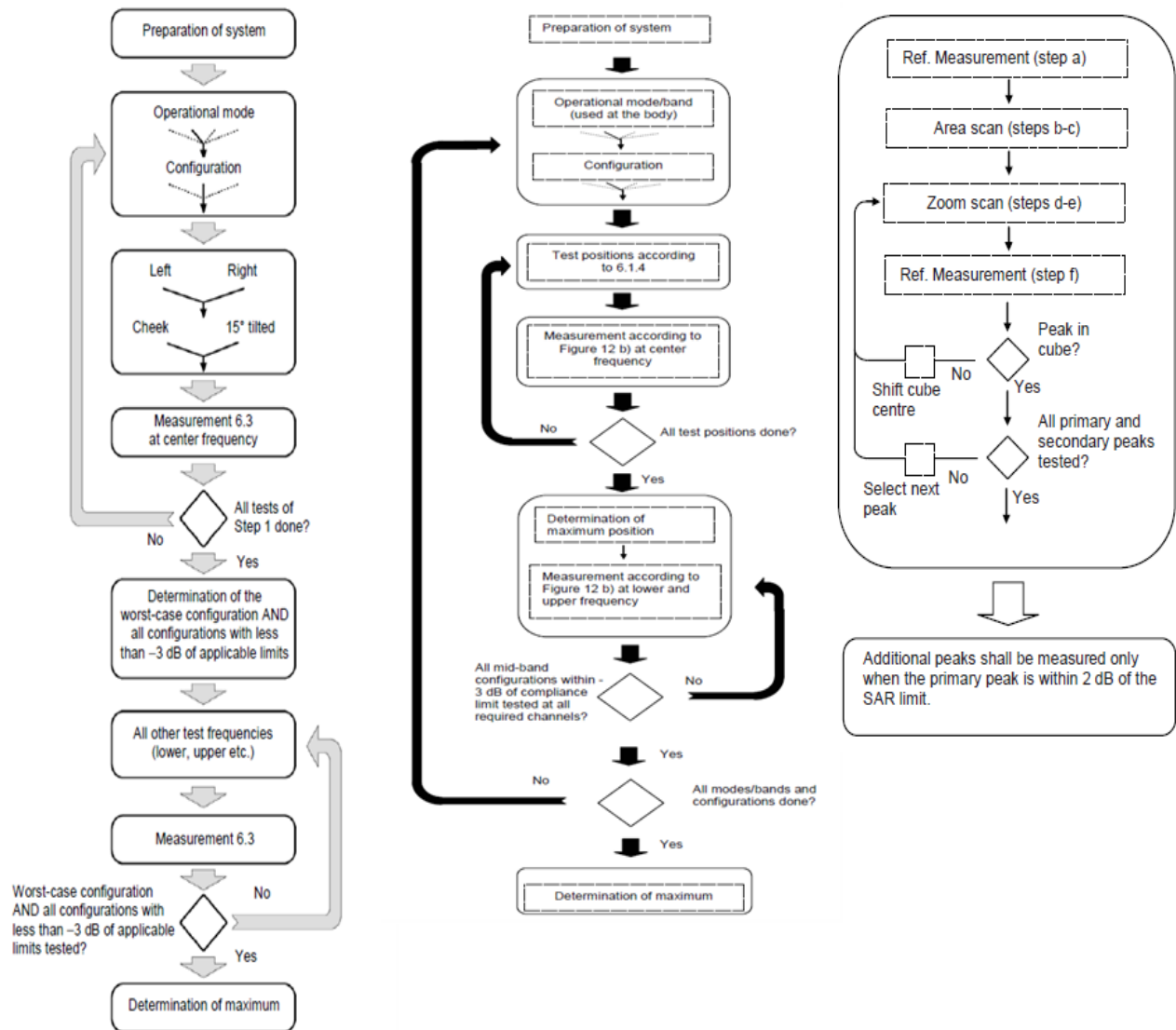
Model	ELI4 Phantom	
<b>Construction</b>	Phantom for compliance testing of handheld and body-mounted wireless devices in the frequency range of 30 MHz to 6 GHz. ELI is fully compatible with the IEC 62209-2 standard and all known tissue simulating liquids. ELI has been optimized regarding its performance and can be integrated into our standard phantom tables. A cover prevents evaporation of the liquid. Reference markings on the phantom allow installation of the complete setup, including all predefined phantom positions and measurement grids, by teaching three points. The phantom is compatible with all SPEAG dosimetric probes and dipoles.	
<b>Shell Thickness</b>	2±0.1 mm	
<b>Filling Volume</b>	Approx. 30 liters	
<b>Dimensions</b>	Length: 600 mm ; Width: 190mm Height: adjustable feet	
<b>Available</b>	Special	

Model	Twin SAM	
<b>Construction</b>	The shell corresponds to the specifications of the Specific Anthropomorphic Mannequin (SAM) phantom defined in IEEE 1528 and IEC 62209-1. It enables the dosimetric evaluation of left and right hand phone usage as well as body mounted usage at the flat phantom region. A cover prevents evaporation of the liquid. Reference markings on the phantom allow the complete setup of all predefined phantom positions and measurement grids by teaching three points with the robot.	
<b>Shell Thickness</b>	2 ± 0.2 mm	
<b>Filling Volume</b>	Approx. 25 liters	
<b>Dimensions</b>	Length:1000mm; Width: 500mm Height: adjustable feet	
<b>Available</b>	Special	



### 3.2.4. SCANNING PROCEDURE

The SAR test against the head and body-worn phantom was carried out as follow:



After an area scan has been done at a fixed distance of 1.4mm from the surface of the phantom on the source side, a 3D scan is set up around the location of the maximum spot SAR. First, a point within the scan area is visited by the probe and a SAR reading taken at the start of testing. At the end of testing, the probe is returned to the same point and a second reading is taken. Comparison between these start and end readings enables the power drift during measurement to be assessed.

Above is the scanning procedure flow chart and table from the IEEE1528 standard.

This is the procedure for which all compliant testing should be carried out to ensure that all variations of the device position and transmission behavior are tested.

### **3.2.5. DATA STORAGE AND EVALUATION**

#### **3.2.5.1. DATA STORAGE**

The DASY5 software stores the acquired data from the data acquisition electronics as raw data (in microvolt readings from the probe sensors), together with all necessary software parameters for the data evaluation (probe calibration data, liquid parameters and device frequency and modulation data) in measurement files with the extension "DAE4". The software evaluates the desired unit and format for output each time the data is visualized or exported. This allows verification of the complete software setup even after the measurement and allows correction of incorrect parameter settings. For example, if a measurement has been performed with a wrong crest factor parameter in the device setup, the parameter can be corrected afterwards and the data can be re-evaluated.

The measured data can be visualized or exported in different units or formats, depending on the selected probe type ([V/m], [A/m], [°C], [mW/g], [mW/cm<sup>2</sup>], [dBrel], etc.). Some of these units are not available in certain situations or show meaningless results, e.g., a SAR output in a lossless media will always be zero. Raw data can also be exported to perform the evaluation with other software packages.

### 3.2.6. DATA EVALUATION BY SEMCAD

The SEMCAD software automatically executes the following procedures to calculate the field units from the microvolt readings at the probe connector. The parameters used in the evaluation are stored in the configuration modules of the software:

Probe parameters:	Sensitivity	Normi, a <sub>i0</sub> , a <sub>i1</sub> , a <sub>i2</sub>
	Conversion factor	ConvF <sub>i</sub>
	Diode compression point	Dcp <sub>i</sub>
Device parameters:	Frequency	f
	Crest factor	cf
Media parameters:	Conductivity	
	Density	

These parameters must be set correctly in the software. They can be found in the component documents or they can be imported into the software from the configuration files issued for the DASY5 components. In the direct measuring mode of the multimeter option, the parameters of the actual system setup are used. In the scan visualization and export modes, the parameters stored in the corresponding document files are used.

The first step of the evaluation is a linearization of the filtered input signal to account for the compression characteristics of the detector diode. The compensation depends on the input signal, the diode type and the DC-transmission factor from the diode to the evaluation electronics.

If the exciting field is pulsed, the crest factor of the signal must be known to correctly compensate for peak power. The formula for each channel can be given as:

$$V_i = U_i + U_i^2 \cdot cf / dcp_i$$

With	V <sub>i</sub> = compensated signal of channel i	(i = x, y, z)
	U <sub>i</sub> = input signal of channel i	(i = x, y, z)
	cf = crest factor of exciting field	(DASY parameter)
	dcp <sub>i</sub> = diode compression point	(DASY parameter)

From the compensated input signals the primary field data for each channel can be evaluated:

$$\text{E-field probes: } E_i = (V_i / \text{Norm}_i \cdot \text{ConvF})^{1/2}$$

$$\text{H-field probes: } H_i = (V_i)^{1/2} \cdot (a_{i0} + a_{i1} f + a_{i2} f^2) / f$$

With  $V_i$  = compensated signal of channel  $i$  ( $i = x, y, z$ )

$\text{Norm}_i$  = sensor sensitivity of channel  $i$  ( $i = x, y, z$ )  
 [mV/(V/m)<sup>2</sup>] for E-field Probes

ConvF = sensitivity enhancement in solution

$a_{ij}$  = sensor sensitivity factors for H-field probes

$f$  = carrier frequency [GHz]

$E_i$  = electric field strength of channel  $i$  in V/m

$H_i$  = magnetic field strength of channel  $i$  in A/m

The RSS value of the field components gives the total field strength (Hermitian magnitude):

$$E_{\text{tot}} = (E_x^2 + E_y^2 + E_z^2)^{1/2}$$

The primary field data are used to calculate the derived field units.

$$\text{SAR} = (E_{\text{tot}})^2 \cdot \sigma / (\rho \cdot 1000)$$

With SAR = local specific absorption rate in mW/g

$E_{\text{tot}}$  = total field strength in V/m  
 $\sigma$  = conductivity in [mho/m] or [Siemens/m]  
 $\rho$  = equivalent tissue density in g/cm<sup>3</sup>

Note that the density is normally set to 1 (or 1.06), to account for actual brain density rather than the density of the simulation liquid. The power flow density is calculated assuming the excitation field to be a free space field.

$$P_{\text{pwe}} = E_{\text{tot}}^2 / 3770 \text{ or } P_{\text{pwe}} = H_{\text{tot}}^2 \cdot 37.7$$

With  $P_{\text{pwe}}$  = equivalent power density of a plane wave in mW/cm<sup>2</sup>

$E_{\text{tot}}$  = total field strength in V/m

$H_{\text{tot}}$  = total magnetic field strength in A/m

## 4. TISSUE-EQUIVALENT LIQUID

### 4.1. TISSUE-EQUIVALENT LIQUID INGREDIENTS

The liquid is consisted of water, salt and Glycol, Sugar, Preventol and Cellulose. The liquid has previously been proven to be suited for worst-case. The measured conductivity and relative permittivity should be within  $\pm 5\%$  of the target values. The below table shows the detail solution. It's satisfying the latest tissue dielectric parameters requirements proposed by the IEC 62209.

#### Composition of the Tissue Equivalent Matter

Tissue Type	Bactericide	DGBE	HEC	NaCl	Sucrose	Triton X-100	Water	Diethylene Glycol Mono-hexylether	Oxidized Mineral Oil
Head 2450	-	45.0	-	0.1	-	-	54.9	-	-
Head 5G	-	-	-	-	-	17.2	65.5	17.3	-

## 4.2. TISSUE-EQUIVALENT LIQUID PROPERTIES

### Dielectric Performance of Tissue Simulating Liquid

Tissue Verification									
Date	Tissue Type	Frequency (MHz)	Conductivity ( $\sigma$ )	Permittivity ( $\epsilon_r$ )	Targeted Conductivity ( $\sigma$ )	Targeted Permittivity ( $\epsilon_r$ )	Deviation Conductivity ( $\sigma$ ) (%)	Deviation Permittivity ( $\epsilon_r$ ) (%)	Limit (%) $\pm 5$
2023/11/7	Head	2402	1.82	39.05	1.76	39.29	3.41	-0.60	$\pm 5$
2023/11/7	Head	2412	1.83	38.98	1.77	39.27	3.53	-0.73	$\pm 5$
2023/11/7	Head	2422	1.84	38.91	1.78	39.25	3.74	-0.88	$\pm 5$
2023/11/7	Head	2437	1.86	38.81	1.79	39.22	4.10	-1.04	$\pm 5$
2023/11/7	Head	2441	1.87	38.79	1.79	39.21	4.18	-1.06	$\pm 5$
2023/11/7	Head	2450	1.88	38.76	1.80	39.20	4.44	-1.11	$\pm 5$
2023/11/7	Head	2452	1.88	38.76	1.80	39.19	4.49	-1.10	$\pm 5$
2023/11/7	Head	2457	1.89	38.75	1.81	39.19	4.60	-1.11	$\pm 5$
2023/11/7	Head	2462	1.90	38.75	1.81	39.18	4.70	-1.10	$\pm 5$
2023/11/7	Head	2467	1.90	38.75	1.82	39.17	4.72	-1.07	$\pm 5$
2023/11/7	Head	2472	1.91	38.75	1.82	39.17	4.79	-1.07	$\pm 5$
2023/11/7	Head	2480	1.92	38.75	1.83	39.16	4.80	-1.05	$\pm 5$
2023/12/18	Head	2402	1.78	40.19	1.76	39.29	1.25	2.29	$\pm 5$
2023/12/18	Head	2412	1.79	40.16	1.77	39.27	1.41	2.27	$\pm 5$
2023/12/18	Head	2422	1.80	40.14	1.78	39.25	1.58	2.27	$\pm 5$
2023/12/18	Head	2437	1.82	40.10	1.79	39.22	1.79	2.24	$\pm 5$
2023/12/18	Head	2441	1.82	40.09	1.79	39.21	1.79	2.24	$\pm 5$
2023/12/18	Head	2450	1.83	40.06	1.80	39.20	1.83	2.19	$\pm 5$
2023/12/18	Head	2452	1.84	40.05	1.80	39.19	1.83	2.19	$\pm 5$
2023/12/18	Head	2457	1.84	40.03	1.81	39.19	1.83	2.14	$\pm 5$
2023/12/18	Head	2462	1.85	40.01	1.81	39.18	1.88	2.12	$\pm 5$
2023/12/18	Head	2467	1.85	39.98	1.82	39.17	1.82	2.07	$\pm 5$
2023/12/18	Head	2472	1.86	39.96	1.82	39.17	1.81	2.02	$\pm 5$
2023/12/18	Head	2480	1.87	39.92	1.83	39.16	1.80	1.94	$\pm 5$
2023/11/8	Head	5180	4.72	35.81	4.64	36.02	1.80	-0.57	$\pm 5$
2023/11/8	Head	5200	4.74	35.77	4.66	36.00	1.81	-0.63	$\pm 5$
2023/11/8	Head	5220	4.76	35.71	4.68	35.98	1.76	-0.74	$\pm 5$
2023/11/8	Head	5240	4.79	35.65	4.70	35.96	1.81	-0.87	$\pm 5$
2023/11/8	Head	5260	4.81	35.59	4.72	35.94	1.96	-0.98	$\pm 5$
2023/11/8	Head	5280	4.84	35.55	4.74	35.92	2.11	-1.03	$\pm 5$
2023/11/8	Head	5300	4.86	35.52	4.76	35.90	2.17	-1.06	$\pm 5$
2023/11/8	Head	5320	4.88	35.47	4.78	35.88	2.13	-1.14	$\pm 5$
2023/11/8	Head	5500	5.09	35.02	4.96	35.60	2.69	-1.63	$\pm 5$
2023/11/8	Head	5520	5.12	34.99	4.98	35.58	2.70	-1.65	$\pm 5$
2023/11/8	Head	5540	5.14	34.94	5.00	35.56	2.63	-1.74	$\pm 5$
2023/11/8	Head	5560	5.15	34.88	5.03	35.54	2.57	-1.87	$\pm 5$
2023/11/8	Head	5580	5.18	34.82	5.05	35.52	2.65	-1.98	$\pm 5$
2023/11/8	Head	5600	5.21	34.77	5.07	35.50	2.80	-2.06	$\pm 5$
2023/11/8	Head	5620	5.24	34.73	5.09	35.48	2.91	-2.10	$\pm 5$
2023/11/8	Head	5640	5.26	34.70	5.11	35.46	2.90	-2.15	$\pm 5$
2023/11/8	Head	5660	5.28	34.64	5.13	35.44	2.89	-2.26	$\pm 5$
2023/11/8	Head	5680	5.30	34.59	5.15	35.42	2.96	-2.36	$\pm 5$
2023/11/8	Head	5700	5.33	34.54	5.17	35.40	3.09	-2.43	$\pm 5$
2023/11/8	Head	5720	5.36	34.50	5.19	35.38	3.23	-2.49	$\pm 5$
2023/11/8	Head	5745	5.38	34.45	5.22	35.35	3.21	-2.54	$\pm 5$
2023/11/8	Head	5765	5.40	34.40	5.24	35.33	3.18	-2.64	$\pm 5$
2023/11/8	Head	5785	5.42	34.34	5.26	35.31	3.23	-2.74	$\pm 5$
2023/11/8	Head	5800	5.44	34.30	5.27	35.30	3.32	-2.83	$\pm 5$
2023/11/8	Head	5805	5.45	34.29	5.28	35.29	3.37	-2.83	$\pm 5$
2023/11/8	Head	5825	5.48	34.25	5.30	35.27	3.45	-2.88	$\pm 5$
2023/11/8	Head	5850	5.51	34.21	5.32	35.24	3.45	-2.92	$\pm 5$
2023/11/8	Head	5900	5.56	34.08	5.37	35.19	3.52	-3.14	$\pm 5$

**Note:**

- 1) The dielectric parameters of the tissue-equivalent liquid should be measured under similar ambient conditions and within 2 °C of the conditions expected during the SAR evaluation to satisfy protocol requirements.
- 2) IEC/IEEE 62209-1528:2020 was ensured to be applied for probe calibration frequencies greater than or equal to 50MHz of the EUT frequencies.
- 3) The above measured tissue parameters were used in the DASY software to perform interpolation via the DASY software to determine actual dielectric parameters at the test frequencies. The SAR test plots may slightly differ from the table above since the DASY rounds to three significant digits.
- 4) According to FCC TCB workshop April, 2019 RF Exposure Procedures Update (Effective February 19, 2019, FCC has permitted the use of single head-tissue simulating liquid specified in IEEE 62209-1- for all SAR tests.

## 5. SYSTEM CHECK

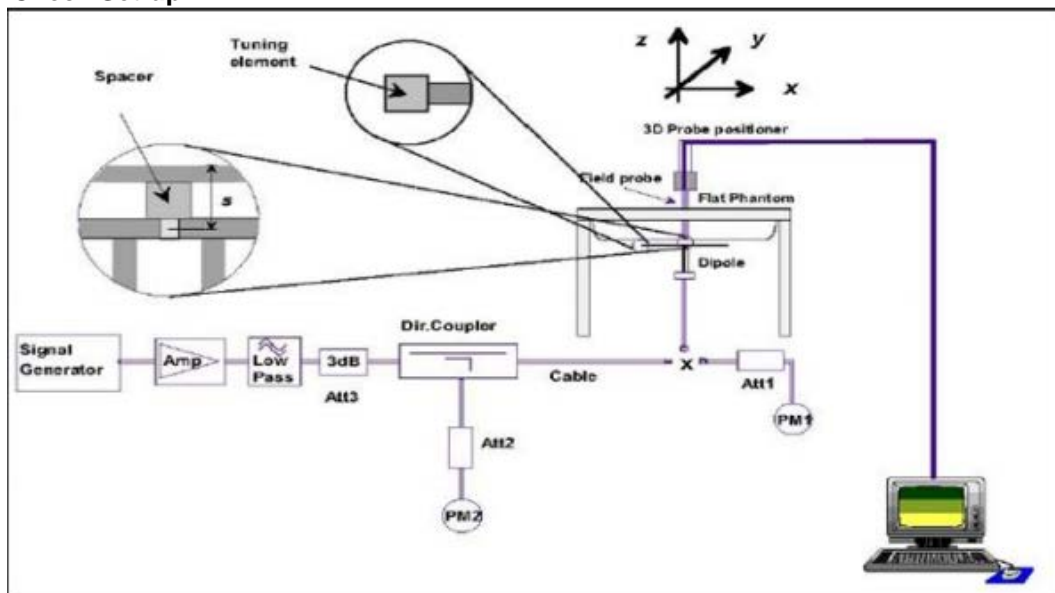
### 5.1. DESCRIPTION OF SYSTEM CHECK

The manufacturer calibrates the probes annually. Dielectric parameters of the tissue simulants were measured every day using the dielectric probe kit and the network analyzer. A system check measurement was made following the determination of the dielectric parameters of the simulant, using the dipole validation kit. A power level of 250 mW (below 3GHz) or 100mW (3-6GHz), which was placed under the flat section of the twin SAM phantom. The system check results (dielectric parameters and SAR values) are given in the 6.2.

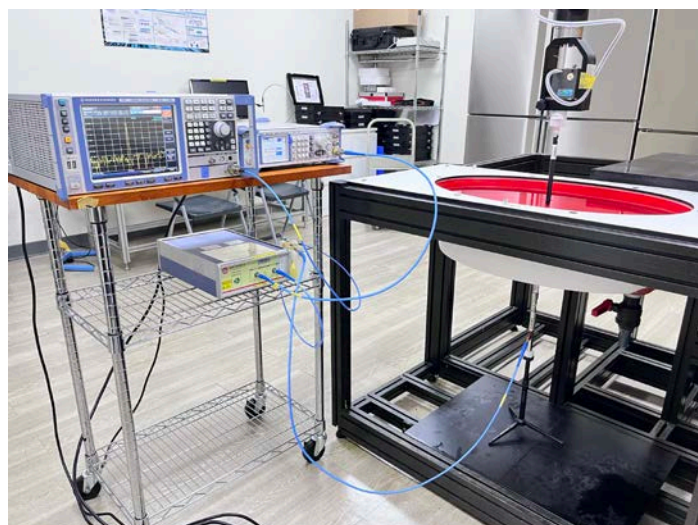
System check results have to be equal or near the values determined during dipole calibration with the relevant liquids and test system ( $\pm 10\%$ ).

System check is performed regularly on all frequency bands where tests are performed with the DASY5 system.

#### System Check Set-up



#### System Check photo





## 5.2. DESCRIPTION OF SYSTEM CHECK

### System Check in Tissue Simulating Liquid

The system check is performed for verifying the accuracy of the complete measurement system and performance of the software. The system check is performed with tissue equivalent material according to IEEE P1528 (described above). The following table shows system check results for all frequency bands and tissue liquids used during the tests.

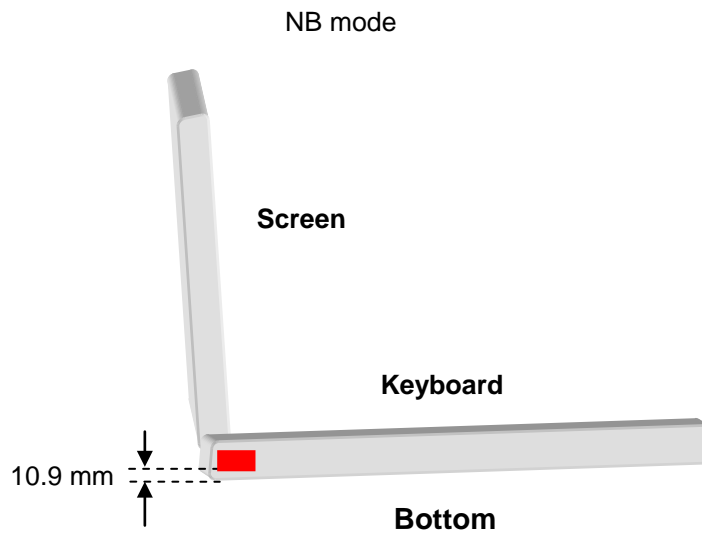
Date	System Dipole			Parameters	Target [W/kg]	Measured [W/kg]	Normalized to 1W [W/kg]	Deviation [%]	Limited [%]
	Type	Serial No.	Liquid						
2023/11/7	D2450V2	973	Head	1g SAR	52.5	14.20	56.8	8.19	± 10
2023/11/8	D5GHzV2 (5.2GHz)	1221	Head	1g SAR	79.8	8.50	85.0	6.52	± 10
2023/11/8	D5GHzV2 (5.3GHz)	1221	Head	1g SAR	81.9	8.27	82.7	0.98	± 10
2023/11/8	D5GHzV2 (5.6GHz)	1221	Head	1g SAR	84.5	8.10	81.0	-4.14	± 10
2023/11/8	D5GHzV2 (5.8GHz)	1221	Head	1g SAR	81.7	7.70	77.0	-5.75	± 10
2023/12/18	D2450V2	973	Head	1g SAR	52.5	12.60	50.4	-4.00	± 10

## 6. OPERATIONAL CONDITIONS DURING TEST

### 6.1. GENERAL DESCRIPTION OF TEST PROCEDURES

Connection to the EUT is established via air interface with base station An, and the EUT is Set to maximum output power by base station. The EUT battery must be fully charged and checked periodically during the test to ascertain uniform power output. The antenna connected to the output of the base station simulator shall be placed at least 50cm away from the EUT. The signal transmitted by the simulator to the antenna feeding point shall be lower than the output power level of the EUT by at least 30dB.

### 6.2. TEST POSITION ANTENNA LOCATION



### 6.3. TEST POSITION OF PORTABLE DEVICES

Minimum Separation Distance				
Mode	Antenna	Position	Distance (mm)	Evaluation Test
WiFi	Main	Bottom	10.9	Yes
	Aux	Bottom	10.9	Yes

## 6.4. TEST POSITION

### 6.4.1. BODY TEST CONFIGURATION

The SAR Exclusion Threshold in KDB 447498 D04 can be applied to determine SAR test exclusion for adjacent edge configurations. The closest distance from the antenna to an EUT edge is used to determine if SAR testing is required for the adjacent edges, with the adjacent edge positioned adjacent the phantom and the edge containing the antenna positioned perpendicular to the phantom.

#### SAR test reduction and exclusion guidance

(1)The SAR exclusion threshold for is defined by the following equation:

$$P_{th} \text{ (mW)} = \begin{cases} ERP_{20 \text{ cm}} (d/20 \text{ cm})^x & d \leq 20 \text{ cm} \\ ERP_{20 \text{ cm}} & 20 \text{ cm} < d \leq 40 \text{ cm} \end{cases} \quad (\text{B. 2})$$

where

$$x = -\log_{10} \left( \frac{60}{ERP_{20 \text{ cm}} \sqrt{f}} \right)$$

and  $f$  is in GHz,  $d$  is the separation distance (cm), and  $ERP_{20 \text{ cm}}$  is per Formula (B.1).

Example values shown in Table B.2 are for illustration only.

Table B.2—Example Power Thresholds (mW)

Frequency (MHz)	Distance (mm)										
	5	10	15	20	25	30	35	40	45	50	
300	39	65	88	110	129	148	166	184	201	217	
450	22	44	67	89	112	135	158	180	203	226	
835	9	25	44	66	90	116	145	175	207	240	
1900	3	12	26	44	66	92	122	157	195	236	
2450	3	10	22	38	59	83	111	143	179	219	
3600	2	8	18	32	49	71	96	125	158	195	
5800	1	6	14	25	40	58	80	106	136	169	

Mode	Ant	Position	Distance (mm)	Frequency (MHz)	Max Power (dBm)	Max Power (mW)	SAR Exclusion threshold(mW)	Test required
Bluetooth	Main	Bottom	10.90	2480	13.00	19.95	10	Yes
Bluetooth	Aux	Bottom	10.90	2480	13.00	19.95	10	Yes

Mode	Ant	Position	Distance (mm)	Frequency (MHz)	Max Power (dBm)	Max Power (mW)	SAR Exclusion threshold(mW)	Test required
2.4GHz	Main	Bottom	10.90	2437	19.00	79.43	10	Yes
2.4GHz	Aux	Bottom	10.90	2437	18.00	63.10	10	Yes

Mode	Ant	Position	Distance (mm)	Frequency (MHz)	Max Power (dBm)	Max Power (mW)	SAR Exclusion threshold(mW)	Test required
5.2GHz	Main	Bottom	10.90	5240	15.00	31.62	6	Yes
5.2GHz	Aux	Bottom	10.90	5240	15.00	31.62	6	Yes
5.3GHz	Main	Bottom	10.90	5260	15.50	35.48	6	Yes
5.3GHz	Aux	Bottom	10.90	5260	16.00	39.81	6	Yes
5.6GHz	Main	Bottom	10.90	5580	16.00	39.81	6	Yes
5.6GHz	Aux	Bottom	10.90	5500	16.00	39.81	6	Yes
5.8GHz	Main	Bottom	10.90	5825	15.50	35.48	6	Yes
5.8GHz	Aux	Bottom	10.90	5825	16.00	39.81	6	Yes
5.9GHz	Main	Bottom	10.90	5875	16.00	39.81	6	Yes
5.9GHz	Aux	Bottom	10.90	5875	15.00	31.62	6	Yes

## 7. SAR MEASUREMENT VARIABILITY AND UNCERTAINTY

### 7.1. SAR MEASUREMENT VARIABILITY

Per KDB865664 D01 SAR measurement 100 MHz to 6 GHz, SAR measurement variability must be assessed for each frequency band, which is determined by the SAR probe calibration point and tissue-equivalent medium used for the device measurements. The additional measurements are repeated after the completion of all measurements requiring the same head or body tissue-equivalent medium in a frequency band. The test device should be returned to ambient conditions (normal room temperature) with the battery fully charged before it is re-mounted on the device holder for the repeated measurement(s) to minimize any unexpected variations in the repeated results.

- 1) Repeated measurement is not required when the original highest measured SAR is  $< 0.80$  W/kg; steps 2) through 4) do not apply.
- 2) When the original highest measured SAR is  $\geq 0.80$  W/kg, repeat that measurement once.
- 3) Perform a second repeated measurement only if the ratio of largest to smallest SAR for the original and first repeated measurements is  $> 1.20$  or when the original or repeated measurement is  $\geq 1.45$  W/kg (~ 10% from the 1-g SAR limit).
- 4) Perform a third repeated measurement only if the original, first or second repeated measurement is  $\geq 1.5$  W/kg and the ratio of largest to smallest SAR for the original, first and second repeated measurements is  $> 1.20$ .

The same procedures should be adapted for measurements according to extremity and occupational exposure limits by applying a factor of 2.5 for extremity exposure and a factor of 5 for occupational exposure to the corresponding SAR thresholds.

The detailed repeated measurement results are shown in Section 9.

## 7.2. WIFI TEST CONFIGURATION

For WLAN SAR testing, WLAN engineering testing software installed on the DUT can provide continuous transmitting RF signal.

### Wi-Fi 2.4GHz Band

Mode	802.11b	802.11g	802.11 be20	802.11be40
Duty cycle	100%			
Crest factor	1			

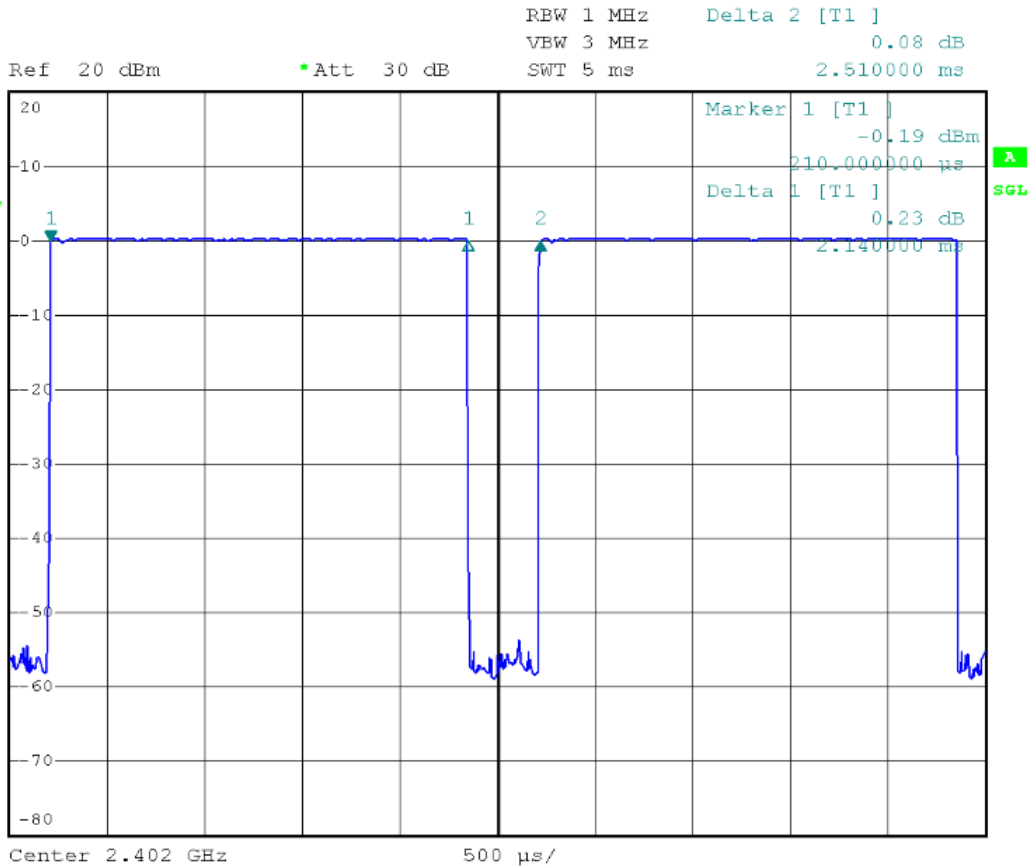
### Wi-Fi 5GHz Band

Mode	802.11a	802.11be20	802.11be40	802.11 be80	802.11 be160
Duty cycle	100%				
Crest factor	1				

For WiFi SAR testing, a communication link is set up with the test mode software for WiFi mode test. During the test, at the each test frequency channel, the EUT is operated at the RF continuous emission mode. The RF signal utilized in SAR measurement has 100% duty cycle and its crest factor is 1. The test procedures in KDB 248227 D01 are applied.

## Bluetooth

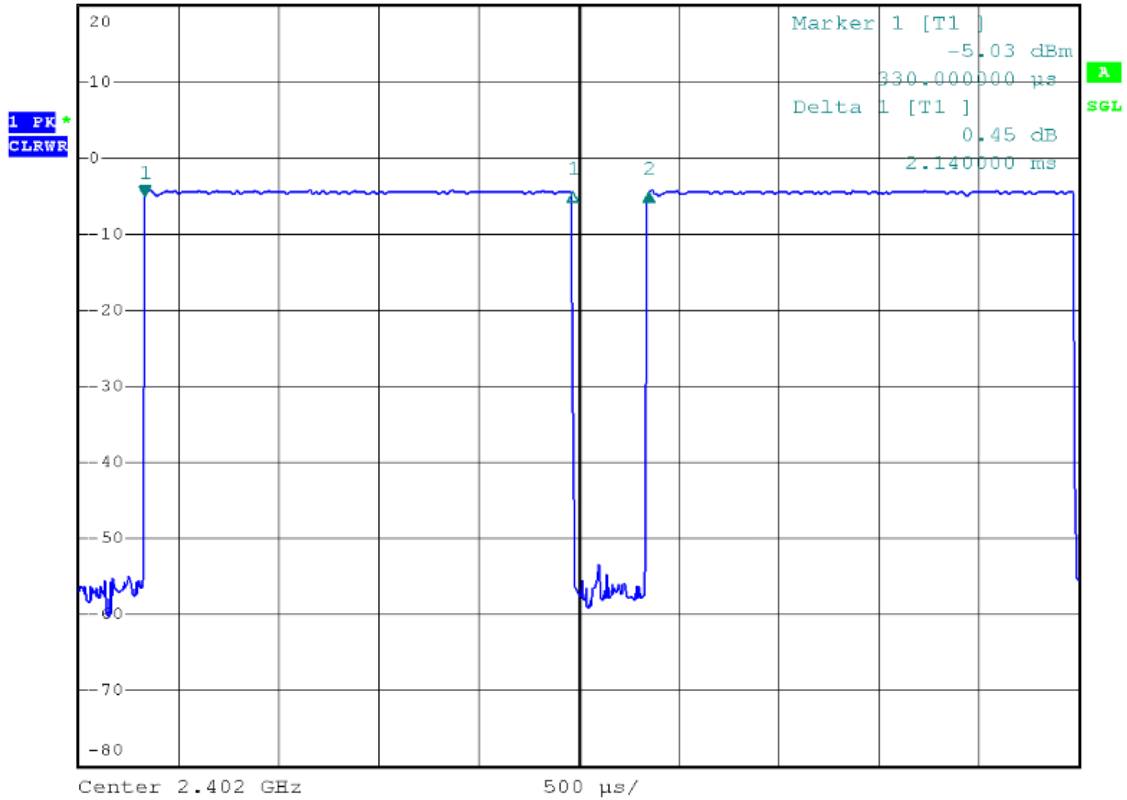
Ant Main	Mode	Bluetooth DH5	Bluetooth EDR	BLE 1M	BLE 2M
	Duty cycle	76.65	76.65	85.25	57.44
	Crest factor	1.30	1.30	1.17	1.74



Ant Aux	Mode	Bluetooth DH5	Bluetooth EDR	BLE 1M	BLE 2M
	Duty cycle	76.86	76.86	84.92	57.44
	Crest factor	1.30	1.30	1.18	1.74



RBW 1 MHz      Delta 2 [T1 ]  
 VBW 3 MHz      0.51 dB  
 Ref 20 dBm      \*Att 30 dB      SWT 5 ms      2.520000 ms





### **7.3. WLAN 2.4G SAR TEST REQUIREMENTS**

#### **802.11b DSSS SAR Test Requirements**

SAR is measured for 2.4 GHz 802.11b DSSS using either a fixed test position or, when applicable, the initial test position procedure. SAR test reduction is determined according to the following:

- 1) When the reported SAR of the highest measured maximum output power channel for the exposure configuration is  $\leq 0.8$  W/kg, no further SAR testing is required for 802.11b DSSS in that exposure configuration.
- 2) When the reported SAR is  $> 0.8$  W/kg, SAR is required for that exposure configuration using the next highest measured output power channel. When any reported SAR is  $> 1.2$  W/kg, SAR is required for the third channel; i.e., all channels require testing.

#### **2.4 GHz 802.11g/n OFDM SAR Test Exclusion Requirements**

When SAR measurement is required for 2.4 GHz 802.11g/n OFDM configurations, the measurement and test reduction procedures for OFDM are applied. SAR is not required for the following 2.4 GHz OFDM conditions.

- 1) When KDB Publication 447498 SAR test exclusion applies to the OFDM configuration.
- 2) When the highest reported SAR for DSSS is adjusted by the ratio of OFDM to DSSS specified maximum output power and the adjusted SAR is  $\leq 1.2$  W/kg.

#### **SAR Test Requirements for OFDM configurations**

When SAR measurement is required for 2.4 GHz 802.11g/n OFDM configurations, each standalone and frequency aggregated band is considered separately for SAR test reduction. In applying the initial test configuration and subsequent test configuration procedures, the 802.11 transmission configuration with the highest specified maximum output power and the channel within a test configuration with the highest measured maximum output power should be clearly distinguished to apply the procedures.

## 7.4. WLAN 5G SAR TEST REQUIREMENTS

### U-NII-1 and U-NII-2A Band

For devices that operate in both U-NII-1 and U-NII-2A bands, when the same maximum output power is specified for both bands, begin SAR measurement in U-NII-2A band by applying the OFDM SAR requirements. If the highest reported SAR for a test configuration is  $\leq 1.2$  W/kg, SAR is not required for U-NII-1 band for that configuration (802.11 mode and exposure condition); otherwise, both bands are tested independently for SAR. When different maximum output power is specified for the bands, begin SAR measurement in the band with higher specified maximum output power. The highest reported SAR for the tested configuration is adjusted by the ratio of lower to higher specified maximum output power for the two bands. When the adjusted SAR is  $\leq 1.2$  W/kg, SAR is not required for the band with lower maximum output power in that test configuration; otherwise, both bands are tested independently for SAR.

### U-NII-2C, U-NII-3 Bands

The frequency range covered by these bands is 380 MHz (5.47 – 5.85 GHz), which requires a minimum of at least two SAR probe calibration frequency points to support SAR measurements. When Terminal Doppler Weather Radar (TDWR) restriction applies, the channels at 5.60 – 5.65 GHz in U-NII-2C band must be disabled with acceptable mechanisms and documented in the equipment certification. Unless band gap channels are permanently disabled, they must be considered for SAR testing. To maintain SAR measurement accuracy and to facilitate test reduction, the channels in U-NII-2C band above 5.65 GHz may be grouped with the 5.8 GHz channels in U-NII-3 or §15.247 band to enable two SAR probe calibration frequency points to cover the bands, including the band gap channels.<sup>11</sup> When band gap channels are supported and the bands are not aggregated for SAR testing, band gap channels must be considered independently in each band according to the normally required OFDM SAR measurement and probe calibration frequency points requirements.

## 7.5. OFDM TRANSMISSION MODE AND SAR TEST CHANNEL SELECTION

For the 2.4GHz and 5GHz bands, when the same maximum output power was specified for multiple OFDM transmission mode configurations in a frequency band or aggregated band, SAR is measured using the configuration with the largest channel bandwidth, lowest order modulation and lowest data rate. When the maximum output power of a channel is the same for equivalent OFDM configurations (for example 802.11a, 802.11n and 802.11ac, or 802.11g and 802.11n, with the same channel bandwidth, modulation, and data rate, etc.), the lower order 802.11 mode (i.e. 802.11a then 802.11n and 802.11ac, or 802.11g then 802.11n) is used for SAR measurement. When the maximum output power are the same for multiple test channels, either according to the default or additional power measurement requirements, SAR is measured using the channel closest to the middle of the frequency band or aggregated band. When there are multiple channels with the same maximum output power, SAR is measured using the higher number channel.

## 7.6. INITIAL TEST CONFIGURATION PROCEDURE

For OFDM, in both 2.4G and 5GHz bands, an initial test configuration is determined for each frequency band and aggregated band, according to the transmission mode with the highest maximum output power specified for SAR measurements. When the same maximum output power is specified for multiple OFDM transmission mode configurations in a frequency band or aggregated band, SAR is measured using the configuration(s) with the largest channel bandwidth, lowest order modulation, and lowest data rate. If the average RF output powers of the highest identical transmission modes are within 0.25 dB of each other, mid channel of the transmission mode with highest average RF output powers is the initial test channel. Otherwise, the channel of the transmission mode with the highest average RF output power will be the initial test configuration. When the reported SAR is  $\leq 0.8$  W/kg, no additional measurements on other test channels are required. Otherwise, SAR is evaluated using the subsequent highest average RF output channel until the reported SAR result is  $\leq 1.2$  W/kg or all channels are measured. When there are multiple untested channels having the same subsequent highest average RF output power, the channel with higher frequency from the lowest 802.11 mode is considered for SAR measurement.

## 8. CONDUCTED POWER RESULTS

### 8.1. CONDUCTED POWER MEASUREMENTS OF BLUETOOTH

Band	Mode	Channel	Frequency (MHz)	Max Power (dBm)	AVG Power (dBm)	
					Main	Aux
DH5	DH5	0	2402	12.50	Not Require	
		39	2441	12.50		
		78	2480	12.50		
EDR	3DH5	0	2402	10.50		
		39	2441	10.50		
		78	2480	10.50		
BLE	1M	0	2402	13.00	12.51	
		19	2440	13.00	12.08	
		39	2480	13.00	11.75	
	2M	0	2402	11.00	Not Require	
		19	2440	11.00		
		39	2480	11.00		
DH5	DH5	0	2402	12.50	Not Require	
		39	2441	12.50		
		78	2480	12.50		
EDR	3DH5	0	2402	10.50		
		39	2441	10.50		
		78	2480	10.50		
BLE	1M	0	2402	13.00		12.45
		19	2440	13.00		12.05
		39	2480	13.00		12.08
	2M	0	2402	11.00	Not Require	
		19	2440	11.00		
		39	2480	11.00		

## 8.2. CONDUCTED POWER MEASUREMENTS OF WI-FI 2.4GHZ BAND

Band	Mode	Channel	Frequency (MHz)	Data Rate	Max Tune-Up Power (dBm)	AVG Power (dBm)	
						Main	Aux
2.4G	802.11 b	1	2412	1	18.50	18.05	
		6	2437	1	19.00	18.61	
		11	2462	1	18.50	18.05	
		12	2467	1	18.00	17.59	
		13	2472	1	12.50	12.14	
	802.11g	1-13	2412-2472	6	18.00	Not Required	
	802.11 be20	1-13	2412-2472	EHT	18.00		
802.11 be40	3-11	2422-2462	EHT	16.00			
2.4G	802.11b	1	2412	1	18.00		17.85
		6	2437	1	18.00		17.59
		11	2462	1	17.00		16.88
		12	2467	1	17.00		16.80
		13	2472	1	11.50		11.16
	802.11g	1-13	2412-2472	6	18.00	Not Required	
	802.11 be20	1-13	2412-2472	EHT	17.50		
802.11 be40	3-11	2422-2462	EHT	15.50			

### RU tone

Band	Mode	RU tone	Channel	Frequency (MHz)	Data Rate	Max Tune-Up Power (dBm)	AVG Power (dBm)	
							Main	Aux
2.4G	802.11 be20	26-tone	1-13	2412-2472	EHT	18.50	Not Required	
	802.11 be20	52-tone	1-13	2412-2472	EHT	18.00		
	802.11 be20	106-tone	1-13	2412-2472	EHT	18.50		
	802.11 be20	242-tone	6	2437	EHT	18.50		
	802.11 be40	484-tone	6	2437	EHT	16.50		
	802.11 be20	52+26-tone MRU	6	2437	EHT	17.50		
	802.11 be20	106+26-tone MRU	6	2437	EHT	17.50		
2.4G	802.11 be20	26-tone	1-13	2412-2472	EHT	18.00	Not Required	
	802.11 be20	52-tone	1-13	2412-2472	EHT	18.00		
	802.11 be20	106-tone	1-13	2412-2472	EHT	18.00		
	802.11 be20	242-tone	6	2437	EHT	18.00		
	802.11 be40	484-tone	6	2437	EHT	16.50		
	802.11 be20	52+26-tone MRU	6	2437	EHT	17.00		
	802.11 be20	106+26-tone MRU	6	2437	EHT	17.50		

### Note:

- As per FCC OET KDB 248227 D01, conducted output power and SAR testing are not required for 802.11g/n20 channels when the highest reported SAR for DSSS is adjusted by the ratio of OFDM to DSSS specified maximum output power and the adjusted SAR is  $\leq 1.2W/kg$ .

### 8.3. CONDUCTED POWER MEASUREMENTS OF 5G UNII\_1

Band	Mode	Channel	Frequency (MHz)	Data Rate	Max Tune-Up Power (dBm)	AVG Power (dBm)	
						Main	Aux
5.2G UNII_1	802.11a	36-48	5180-5240	6	15.00	Not Required	
	802.11 be20	36-48	5180-5240	EHT	15.00		
	802.11 be40	38-46	5190-5230	EHT	14.50		
	802.11 be80	42	5210	EHT	13.50		
5.2G UNII_1	802.11a	36-48	5180-5240	6	15.00		
	802.11 be20	36-48	5180-5240	EHT	15.00		
	802.11 be40	38-46	5190-5230	EHT	14.50		
	802.11 be80	42	5210	EHT	13.50		

#### RU tone

Band	Mode	RU tone	Channel	Frequency (MHz)	Data Rate	Max Tune-Up Power (dBm)	AVG Power (dBm)	
							Main	Aux
5.2G UNII_1	802.11be20	26-tone	36-48	5180-5240	EHT	8.50	Not Required	
	802.11 be20	52-tone	36-48	5180-5240	EHT	12.50		
	802.11 be20	106-tone	38-46	5190-5230	EHT	15.00		
	802.11 be20	242-tone	40	5200	EHT	15.00		
	802.11 be40	484-tone	46	5230	EHT	13.50		
	802.11 be80	996-tone	42	5210	EHT	13.50		
	802.11be20	52+26-tone	40	5200	EHT	13.50		
	802.11be20	106+26-tone	40	5200	EHT	14.50		
5.2G UNII_1	802.11 be80	484+242-tone	42	5210	EHT	13.00		
	802.11be20	26-tone	36-48	5180-5240	EHT	8.00	Not Required	
	802.11 be20	52-tone	36-48	5180-5240	EHT	11.50		
	802.11 be20	106-tone	38-46	5190-5230	EHT	15.00		
	802.11 be20	242-tone	40	5200	EHT	14.50		
	802.11 be40	484-tone	46	5230	EHT	13.00		
	802.11 be80	996-tone	42	5210	EHT	12.50		
	802.11be20	52+26-tone	40	5200	EHT	12.50		
802.11be20	106+26-tone	40	5200	EHT	15.50			
802.11 be80	484+242-tone	42	5210	EHT	12.50			

#### Note:

- When the same maximum output power is specified for both bands, begin SAR measurement in U-NII-2A band by applying the OFDM SAR requirements. If the highest reported SAR for a test configuration is  $\leq 1.2$  W/kg, SAR is not required for U-NII-1 band (see §B.5.2 in this document).
- The initial test configuration for 2.4 GHz and 5 GHz OFDM transmission modes is determined by the 802.11 configuration with the highest maximum output power specified for production units, including tune-up tolerance, in each standalone and aggregated frequency band. SAR for the initial test configuration is measured using the highest maximum output power channel determined by the default power measurement procedures. When multiple transmission modes (802.11a/g/n/ac) have the same specified maximum output power, largest channel bandwidth, lowest order modulation and lowest data rate, lowest order 802.11 mode is selected (i.e. a, g, n, ac).

### 8.4. CONDUCTED POWER MEASUREMENTS OF 5G UNII\_2A

Band	Mode	Channel	Frequency (MHz)	Data Rate	Max Tune-Up Power (dBm)	AVG Power (dBm)	
						Main	Aux
5.3G UNII_2a	802.11a	52	5260	6	15.50	15.23	
	802.11a	60	5300	6	15.50	15.15	
	802.11a	64	5320	6	14.50	14.45	
	802.11 be20	52-64	5260-5320	EHT	15.50	Not Required	
	802.11 be40	54-62	5270-5310	EHT	14.00		
	802.11 be80	58	5290	EHT	13.00		
	802.11 be160	50	5250	EHT	9.50		
5.3G UNII_2a	802.11a	52	5260	6	16.00		15.74
	802.11a	60	5300	6	15.00		14.75
	802.11a	64	5320	6	15.00		14.46
	802.11 be20	52-64	5260-5320	EHT	15.50	Not Required	
	802.11 be40	54-62	5270-5310	EHT	14.00		
	802.11 be80	58	5290	EHT	13.00		
	802.11 be160	50	5250	EHT	9.50		

#### RU tone

Band	Mode	RU tone	Channel	Frequency (MHz)	Data Rate	Max Tune-Up Power (dBm)	AVG Power (dBm)	
							Main	Aux
5.3G UNII_2a	802.11be20	26-tone	52-64	5260-5320	EHT	8.50	Not Required	
	802.11 be20	52-tone	52-64	5260-5320	EHT	12.00		
	802.11 be20	106-tone	52-64	5260-5320	EHT	5.00		
	802.11 be20	242-tone	64	5320	EHT	15.00		
	802.11 be40	484-tone	62	5310	EHT	13.50		
	802.11 be80	996-tone	58	5290	EHT	13.00		
	802.11 be160	2x996-tone	50	5250	EHT	10.00		
	802.11be20	52+26-tone	64	5320	EHT	12.50		
	802.11be20	106+26-tone	64	5320	EHT	15.00		
	802.11 be80	484+242-tone	58	5290	EHT	13.50		
802.11 be160	996+484-tone	50	5250	EHT	12.50			
5.3G UNII_2a	802.11be20	26-tone	52-64	5260-5320	EHT	7.50	Not Required	
	802.11 be20	52-tone	52-64	5260-5320	EHT	11.00		
	802.11 be20	106-tone	52-64	5260-5320	EHT	14.50		
	802.11 be20	242-tone	64	5320	EHT	14.00		
	802.11 be40	484-tone	62	5310	EHT	12.50		
	802.11 be80	996-tone	58	5290	EHT	12.00		
	802.11 be160	2x996-tone	50	5250	EHT	9.00		
	802.11be20	52+26-tone	64	5320	EHT	11.50		
	802.11be20	106+26-tone	64	5320	EHT	14.50		
	802.11 be80	484+242-tone	58	5290	EHT	12.50		
802.11 be160	996+484-tone	50	5250	EHT	12.00			

#### Note:

- When the same maximum output power is specified for both bands, begin SAR measurement in U-NII-2A band by applying the OFDM SAR requirements. If the highest reported SAR for a test configuration is  $\leq 1.2$  W/kg, SAR is not required for U-NII-1 band (see §B.5.2 in this document).
- The initial test configuration for 2.4 GHz and 5 GHz OFDM transmission modes is determined by the 802.11 configuration with the highest maximum output power specified for production units, including tune-up tolerance, in each standalone and aggregated frequency band. SAR for the initial test configuration is measured using the highest maximum output power channel determined by the default power measurement procedures. When multiple transmission modes (802.11a/g/n/ac) have the same specified maximum output power, largest channel bandwidth, lowest order modulation and lowest data rate, lowest order 802.11 mode is selected (i.e. a, g, n, ac).
- Largest channel bandwidth is worse than lowest order modulation.

### 8.5. CONDUCTED POWER MEASUREMENTS OF 5G UNII\_2C

Band	Mode	Channel	Frequency (MHz)	Data Rate	Max Tune-Up Power (dBm)	AVG Power (dBm)	
						Main	Aux
5.6G UNII_2c	802.11a	100	5500	6	15.50	15.07	
	802.11a	116	5580	6	16.00	15.64	
	802.11a	140	5700	6	15.00	14.60	
	802.11 be20	100-140	5500-5700	EHT	16.00	Not Required	
	802.11 be40	102-134	5510-5670	EHT	15.50		
	802.11 be80	106-138	5530-5690	EHT	14.00		
	802.11 be160	114	5570	EHT	11.00		
5.6G UNII_2c	802.11a	100	5500	6	16.00		15.73
	802.11a	116	5580	6	15.50		15.42
	802.11a	140	5700	6	15.00		14.79
	802.11 be20	100-140	5500-5700	EHT	16.00	Not Required	
	802.11 be40	102-134	5510-5670	EHT	15.50		
	802.11 be80	106-138	5530-5690	EHT	14.00		
	802.11 be160	114	5570	EHT	11.00		

#### RU tone

Band	Mode	RU tone	Channel	Frequency (MHz)	Data Rate	Max Tune-Up Power (dBm)	AVG Power (dBm)	
							Main	Aux
5.6G UNII_2c	802.11be20	26-tone	100-140	5500-5700	EHT	8.00	Not Required	
	802.11 be20	52-tone	100-140	5500-5700	EHT	11.50		
	802.11 be20	106-tone	100-140	5500-5700	EHT	14.50		
	802.11 be20	242-tone	116	5580	EHT	15.50		
	802.11 be40	484-tone	110	5550	EHT	13.50		
	802.11 be160	2x996-tone	114	5570	EHT	13.50		
	802.11be20	52+26-tone	116	5580	EHT	11.50		
	802.11be20	106+26-tone	116	5580	EHT	15.00		
5.6G UNII_2c	802.11 be160	996+484-tone	114	5570	EHT	13.00	Not Required	
	802.11be20	26-tone	100-140	5500-5700	EHT	7.50		
	802.11 be20	52-tone	100-140	5500-5700	EHT	11.50		
	802.11 be20	106-tone	100-140	5500-5700	EHT	14.00		
	802.11 be20	242-tone	116	5580	EHT	15.00		
	802.11 be40	484-tone	110	5550	EHT	15.00		
	802.11 be160	2x996-tone	114	5570	EHT	12.50		
	802.11be20	52+26-tone	116	5580	EHT	11.00		
802.11be20	106+26-tone	116	5580	EHT	14.50			
802.11 be160	996+484-tone	114	5570	EHT	12.00			

**Note:**

- The initial test configuration for 2.4 GHz and 5 GHz OFDM transmission modes is determined by the 802.11 configuration with the highest maximum output power specified for production units, including tune-up tolerance, in each standalone and aggregated frequency band. SAR for the initial test configuration is measured using the highest maximum output power channel determined by the default power measurement procedures. When multiple transmission modes (802.11a/g/n/ac) have the same specified maximum output power, largest channel bandwidth, lowest order modulation and lowest data rate, lowest order 802.11 mode is selected (i.e. a, g, n, ac).
- Largest channel bandwidth is worse than lowest order modulation.

### 8.6. CONDUCTED POWER MEASUREMENTS OF 5G UNII\_3

Band	Mode	Channel	Frequency (MHz)	Data Rate	Max Tune-Up Power (dBm)	AVG Power (dBm)	
						Main	Aux
5.8G UNII_3	802.11a	149	5745	6	15.00	14.97	
	802.11a	157	5785	6	15.50	15.03	
	802.11a	165	5825	6	15.50	15.37	
	802.11 be20	149-165	5745-5825	EHT	15.00	Not Required	
	802.11 be40	151-159	5755-5795	EHT	14.50		
802.11 be80	155	5775	EHT	13.50			
5.8G UNII_3	802.11a	149	5745	6	15.00		14.92
	802.11a	157	5785	6	15.50		15.05
	802.11a	165	5825	6	16.00		15.52
	802.11 be20	149-165	5745-5825	EHT	15.50	Not Required	
	802.11 be40	151-159	5755-5795	EHT	14.50		
802.11 be80	155	5775	EHT	13.50			

#### RU tone

Band	Mode	RU tone	Channel	Frequency (MHz)	Data Rate	Max Tune-Up Power (dBm)	AVG Power (dBm)	
							Main	Aux
5.8G UNII_3	802.11be20	26-tone	149-165	5745-5825	EHT	14.50	Not Required	
	802.11 be20	52-tone	149-165	5745-5825	EHT	15.00		
	802.11 be20	106-tone	149-165	5745-5825	EHT	15.00		
	802.11 be20	242-tone	165	5825	EHT	15.00		
	802.11 be40	484-tone	159	5795	EHT	15.50		
	802.11 be80	996-tone	155	5755	EHT	14.50		
	802.11be20	52+62-tone	165	5825	EHT	15.50		
	802.11be20	106+26-tone	165	5825	EHT	15.00		
5.8G UNII_3	802.11 be80	484+242-tone	155	5755	EHT	15.00	Not Required	
	802.11be20	26-tone	149-165	5745-5825	EHT	14.00		
	802.11 be20	52-tone	149-165	5745-5825	EHT	14.50		
	802.11 be20	106-tone	149-165	5745-5825	EHT	15.50		
	802.11 be20	242-tone	165	5825	EHT	15.00		
	802.11 be40	484-tone	159	5795	EHT	14.50		
	802.11 be80	996-tone	155	5775	EHT	13.50		
	802.11be20	52+62-tone	165	5825	EHT	15.00		
802.11be20	106+26-tone	165	5825	EHT	14.00			
802.11 be80	484+242-tone	155	5755	EHT	15.50			

#### Note:

- The initial test configuration for 2.4 GHz and 5 GHz OFDM transmission modes is determined by the 802.11 configuration with the highest maximum output power specified for production units, including tune-up tolerance, in each standalone and aggregated frequency band. SAR for the initial test configuration is measured using the highest maximum output power channel determined by the default power measurement procedures. When multiple transmission modes (802.11a/g/n/ac) have the same specified maximum output power, largest channel bandwidth, lowest order modulation and lowest data rate, lowest order 802.11 mode is selected (i.e. a, g, n, ac).
- Largest channel bandwidth is worse than lowest order modulation.



### 8.7. CONDUCTED POWER MEASUREMENTS OF 5G UNII\_4

Band	Mode	Channel	Frequency (MHz)	Data Rate	Max Tune-Up Power (dBm)	AVG Power (dBm)	
						Main	Aux
5.9G UNII_4	802.11 a	169-177	5845-5885	6	13.50	Not Required	
	802.11 be20	169-177	5845-5885	EHT	14.50		
	802.11 be40	167	5835	EHT	15.00	14.89	
	802.11 be40	175	5875	EHT	16.00	15.88	
	802.11 be80	171	5855	EHT	14.50	Not Required	
802.11 be160	163	5815	EHT	13.00			
5.9G UNII_4	802.11 a	169-177	5845-5885	6	14.00	Not Required	
	802.11 be20	169-177	5845-5885	EHT	14.50		
	802.11 be40	167	5835	EHT	15.00		14.88
	802.11 be40	175	5875	EHT	15.00		14.93
	802.11 be80	171	5855	EHT	14.50	Not Required	
802.11 be160	163	5815	EHT	13.00			

### RU tone

Band	Mode	RU tone	Channel	Frequency (MHz)	Data Rate	Max Tune-Up Power (dBm)	AVG Power (dBm)	
							Main	Aux
5.9G UNII_4	802.11be20	26-tone	169-177	5845-5885	EHT	5.50	Not Required	
	802.11 be20	52-tone	169-177	5845-5885	EHT	8.50		
	802.11 be20	106-tone	169-177	5845-5885	EHT	11.50		
	802.11 be20	242-tone	169-177	5845-5885	EHT	14.50		
	802.11 be40	484-tone	167-175	5835-5875	EHT	15.50		
	802.11 be80	996-tone	171	5855	EHT	12.50		
	802.11 be80	2x996-tone	163	5815	EHT	12.50		
	802.11be20	52+62-tone	173	5865	EHT	10.00		
	802.11be20	106+26-tone	173	5865	EHT	12.00		
5.9G UNII_4	802.11 be80	484+242-tone	171	5855	EHT	15.00	Not Required	
	802.11 be160	996+484-tone	163	5815	EHT	13.50		
	802.11be20	26-tone	169-177	5845-5885	EHT	5.00		
	802.11 be20	52-tone	169-177	5845-5885	EHT	8.00		
	802.11 be20	106-tone	169-177	5845-5885	EHT	10.50		
	802.11 be20	242-tone	169-177	5845-5885	EHT	14.50		
	802.11 be40	484-tone	167-175	5835-5875	EHT	15.00		
	802.11 be80	996-tone	171	5855	EHT	11.50		
	802.11 be80	2x996-tone	163	5815	EHT	11.50		
5.9G UNII_4	802.11be20	52+62-tone	173	5865	EHT	9.00	Not Required	
	802.11be20	106+26-tone	173	5865	EHT	11.00		
	802.11 be80	484+242-tone	171	5855	EHT	15.00		
	802.11 be160	996+484-tone	163	5815	EHT	12.50		
	802.11 be160	996+484-tone	163	5815	EHT	12.50		

## 8.8. SAR TEST RESULTS

### General Notes:

1. Per KDB447498 D04, all measurement SAR results are scaled to the maximum tune-up tolerance limit to demonstrate compliant.
2. Per KDB447498 D04, testing of other required channels within the operating mode of a frequency band is not required when the reported 1-g or 10-g SAR for the mid-band or highest output power channel is:  $\leq 0.8$  W/kg or 2.0 W/kg, for 1-g or 10-g respectively, when the transmission band is  $\leq 100$  MHz. When the maximum output power variation across the required test channels is  $> \frac{1}{2}$  dB, instead of the middle channel, the highest output power channel must be used.
3. Per KDB865664 D01, for each frequency band, repeated SAR measurement is required only when the measured SAR is  $\geq 0.8$  W/kg; if the deviation among the repeated measurement is  $\leq 20\%$ , and the measured SAR  $< 1.45$  W/kg, only one repeated measurement is required.

### WLAN Notes:

1. For exposure conditions with multiple test positions, such as handset operating next to the ear, devices with hotspot mode, procedures for initial test position can be applied. Using the transmission mode determined by the DSSS procedure or initial test configuration, area scans are measured for all positions in an exposure condition. The test position with the highest extrapolated(peak) SAR is used as the initial test position. When the reported SAR of the initial test position is  $\leq 0.4$  W/kg, further SAR measurement is not required for the other (remaining) test positions. Otherwise, SAR is evaluated at the subsequent highest peak SAR position until the reported SAR result is  $\leq 0.8$  W/kg or all test positions are measured.
2. Justification for test configurations for WLAN per KDB Publication 248227 for 2.4GHz WIFI single transmission chain operations, the highest measured maximum output power Channel for DSSS was selected for SAR measurement. SAR for OFDM modes(2.4GHz 802.11g/n) was not required due to the maximum allowed powers and the highest reported DSSS SAR. See Section 7.1.4 for more information.
3. Justification for test configurations for WLAN per KDB Publication 248227 for 5GHz WIFI single transmission chain operations, the initial test configuration was selected according to the transmission mode with the highest maximum allowed power. Other transmission mode was not investigated since the highest reported SAR for initial test configuration adjusted by the ratio of maximum output powers is less than 1.2W/kg. See Section 7.1.4 for more information.

## 9. SAR TEST RESULTS

### 9.1. BODY SAR TEST RESULTS

#### SAR test results of Bluetooth

Mode	Channel	Test Position	Distance (mm)	Ant	Max Tune-up (dBm)	AVG Power (dBm)	SAR 1g	Duty Cycle %	Duty Factor	Reported SAR 1g
BLE_1M	0	Bottom	0	Main	13.00	12.51	0.086	85.25%	1.17	0.113
	19	Bottom	0	Main	13.00	12.08	0.088	85.25%	1.17	0.127
	39	Bottom	0	Main	13.00	11.75	0.091	85.25%	1.17	<b>0.143</b>
	0	LCD Back	25	Main	13.00	12.51	0.058	85.25%	1.17	0.076
BLE_1M	0	Bottom	0	Aux	13.00	12.45	0.082	84.92%	1.18	0.109
	19	Bottom	0	Aux	13.00	12.05	0.084	84.92%	1.18	0.124
	39	Bottom	0	Aux	13.00	12.08	0.087	84.92%	1.18	<b>0.126</b>
	0	LCD Back	25	Aux	13.00	12.45	0.059	84.92%	1.18	0.079

#### SAR test results of 2.4G WiFi

Mode	Channel	Test Position	Distance (mm)	Ant	Max Tune-up (dBm)	AVG Power (dBm)	SAR 1g	Reported SAR 1g
802.11b	1	Bottom	0	Main	18.50	18.05	0.345	0.383
	6	Bottom	0	Main	19.00	18.61	0.463	0.507
	11	Bottom	0	Main	18.50	18.05	<b>0.489</b>	<b>0.542</b>
	12	Bottom	0	Main	18.00	17.59	0.461	0.507
	13	Bottom	0	Main	12.50	12.14	0.171	0.186
	11	LCD Back	25	Main	18.50	18.05	0.017	0.018
802.11b	1	Bottom	0	Aux	18.00	17.85	0.323	0.334
	6	Bottom	0	Aux	18.00	17.59	<b>0.310</b>	<b>0.341</b>
	11	Bottom	0	Aux	17.00	16.88	0.277	0.285
	12	Bottom	0	Aux	17.00	16.80	0.309	0.324
	13	Bottom	0	Aux	11.50	11.16	0.105	0.114
	6	LCD Back	25	Aux	18.00	17.59	0.009	0.010

**SAR test results of 5G WiFi**

Band	Mode	Channel	Test Position	Distance (mm)	Ant	Max Tune-up (dBm)	AVG Power (dBm)	SAR 1g	Reported SAR 1g	Note
5G UNII 1&2a	802.11a	52	Bottom	0	Main	15.50	15.23	0.501	0.533	
		60	Bottom	0	Main	15.50	15.15	0.522	0.566	
		64	Bottom	0	Main	14.50	14.45	0.581	<b>0.588</b>	
		64	LCD Back	25	Main	14.50	14.45	0.027	0.027	
	802.11a	52	Bottom	0	Aux	16.00	15.74	0.576	<b>0.612</b>	
		60	Bottom	0	Aux	15.00	14.75	0.508	0.538	
		64	Bottom	0	Aux	14.50	14.46	0.512	0.517	
		52	LCD Back	25	Aux	16.00	15.74	0.022	0.023	
5G UNII 2C	802.11a	100	Bottom	0	Main	15.50	15.07	0.779	<b>0.860</b>	
		116	Bottom	0	Main	16.00	15.64	0.751	0.816	1
		140	Bottom	0	Main	15.00	14.60	0.661	0.725	1
		100	LCD Back	25	Main	15.50	15.07	0.052	0.058	
	802.11a	100	Bottom	0	Aux	16.00	15.73	0.603	0.642	
		116	Bottom	0	Aux	15.50	15.42	0.715	0.728	
		140	Bottom	0	Aux	15.00	14.79	0.723	<b>0.759</b>	
		140	LCD Back	25	Aux	15.00	14.79	0.046	0.048	
5G UNII 3	802.11a	149	Bottom	0	Main	15.00	14.97	0.726	0.731	1
		157	Bottom	0	Main	15.50	15.03	0.798	<b>0.889</b>	1
		165	Bottom	0	Main	15.50	15.37	0.798	0.822	
		157	LCD Back	25	Main	15.50	15.03	0.088	0.098	
	802.11a	149	Bottom	0	Aux	15.00	14.92	0.779	0.793	1
		157	Bottom	0	Aux	15.50	15.05	0.754	0.836	1
		165	Bottom	0	Aux	16.00	15.52	0.754	<b>0.842</b>	
		165	LCD Back	25	Aux	16.00	15.52	0.059	0.066	
5G UNII 4	802.11 be40	167	Bottom	0	Main	15.00	14.89	0.661	0.678	
		175	Bottom	0	Main	16.00	15.88	<b>0.667</b>	<b>0.686</b>	
		175	LCD Back	25	Main	16.00	15.88	0.084	0.087	
	802.11 be40	167	Bottom	0	Aux	15.00	14.88	0.628	0.646	
		175	Bottom	0	Aux	15.00	14.93	<b>0.666</b>	<b>0.677</b>	
		175	LCD Back	25	Aux	15.00	14.93	0.025	0.026	
5G UNII 3	802.11a	157	Bottom	0	Main	15.50	15.03	0.739	0.823	2

**Note:**

- Highest reported SAR is > 0.8 W/kg. Added second highest power channel for this test position
- Repeated measurements are required only when the measured SAR is  $\geq 0.80$  W/kg. If the measured SAR values are < 1.45 W/kg with  $\leq 20\%$  variation, only one repeated measurement is required to reaffirm that the results are not expected to have substantial variations, which may introduce significant compliance concerns. (Per KDB 865664 D01 SAR measurement 100 MHz to 6 GHz v01r04)  
Original SAR = 0.798 W/kg, therefore second times repeat SAR is required.  
Repeat SAR = 0.739 W/kg < 1.45 W/kg  
SAR variation = -7.39% < 20%

## 10. SIMULTANEOUS TRANSMISSION CONDITIONS

### 10.1. STAND-ALONE SAR TEST EXCLUSION

SAR compliance for simultaneous transmission must be considered when the maximum duration of overlapping transmissions, including network hand-offs, is greater than 30 seconds. This device contains multiple transmitters that may operate simultaneously, and therefore requires a simultaneous transmission analysis.

The Simultaneous Transmission Possibilities of this device are as below:

No.	Configuration
1	WLAN 2.4G(Main)+BT
2	RLAN 5G(Main)+BT
3	WLAN 6G(Main)+BT
4	WLAN 2.4G(Main)+ WLAN 2.4G(Aux)
5	RLAN 5G(Main)+ RLAN 5G(Aux)
6	WLAN 6G(Main)+ WLAN 6G(Aux)

## 10.2. ABOUT BT/WIFI

SAR1g(W/kg)	Test Position	Bottom	LCD Back
		WLAN 2.4G WiFi_Main	0.542
	WLAN 2.4G WiFi_Aux	0.341	0.009
	UNII_1 & 2a WiFi_Main	0.588	0.027
	UNII_1 & 2a WiFi_Aux	0.612	0.023
	UNII_2c WiFi_Main	0.860	0.058
	UNII_2c WiFi_Aux	0.759	0.048
	UNII_3 WiFi_Main	0.889	0.098
	UNII_3 WiFi_Aux	0.842	0.066
	UNII_4 WiFi_Main	0.686	0.087
	UNII_4 WiFi_Aux	0.677	0.026
	UNII_5 WiFi_Main	0.286	0.052
	UNII_5 WiFi_Aux	0.295	0.027
	UNII_6 WiFi_Main	0.307	0.054
	UNII_6 WiFi_Aux	0.240	0.021
	UNII_7 WiFi_Main	0.336	0.045
	UNII_7 WiFi_Aux	0.320	0.040
	UNII_8 WiFi_Main	0.309	0.036
	UNII_8 WiFi_Aux	0.322	0.036
	BLE_Main	0.143	0.076
	BLE_Aux	0.126	0.079

WLAN2.4G_Main+WLAN 2.4G_Aux MAX $\Sigma$ SAR1g	0.883	0.027
WLAN_Main+BLE_Aux MAX $\Sigma$ SAR1g	1.015	0.177
WLAN_Aux+BLE_Main MAX $\Sigma$ SAR1g	0.985	0.142
RLAN 5G_Main+ RLAN 5G_Aux MAX $\Sigma$ SAR1g	1.731	0.164
Wi-Fi 6G_Main+ Wi-Fi 6G_Aux MAX $\Sigma$ SAR1g	0.658	0.094

Note:

1. MAX.  $\Sigma$ SAR = 1.731 W/Kg > 1.6 W/Kg, so Peak location SAR are required.
2. Peak location SAR are 0.02 that refer Appendix E.
3. For the WiFi 7 test result that we reference test report : BTL-FCC SAR-1-2309C037A R00

## 11. TEST LAYOUT

### Specific Absorption Rate Test Layout



**Liquid depth in the flat Phantom ( $\geq 15$ cm depth)**

HSL(2450MHz)

HSL(5GHz)





**Appendix A. SAR Plots of System Verification**

(Pls See BTL-FCC SAR-1-2309C037\_Appendix A.)

**Appendix B. SAR Plots of SAR Measurement**

(Pls See BTL-FCC SAR-1-2309C037\_Appendix B.)

**Appendix C. Calibration Certificate**

(Pls See BTL-FCC SAR-1-2309C037\_Appendix C.)

**Appendix D. Photographs of the Test Set-Up**

(Pls See BTL-FCC SAR-1-2309C037\_Appendix D.)

**Appendix E. SAR SPLSR**

(Pls See BTL-FCC SAR-1-2309C037\_Appendix E.)

**End of Test Report**