

Device Under Test Properties

Model, Manufacturer	Dimensions [mm]	IMEI	DUT Type
Device,	16.0 x 6.0 x 300.0		

Exposure Conditions

Phantom Section, TSL	Position, Test Distance [mm]	Band	Group, UID	Frequency [MHz], Channel Number	Conversion Factor	TSL Conductivity [S/m]	TSL Permittivity
Flat, HSL	,		CW, 0-	6500.000, 0	5.4	5.94	33.8

Hardware Setup

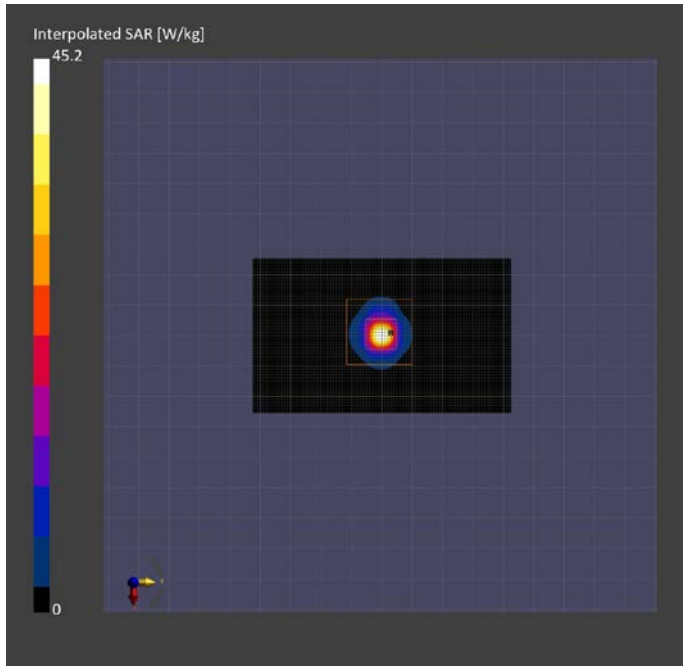
Phantom	TSL, Measured Date	Probe, Calibration Date	DAE, Calibration Date
ELI V5.0 (20deg probe tilt) - 1240	H6E-231123 Charge: xxxx, --	EX3DV4 - SN7369, 2023-05-22	DAE4 Sn1486, 2023-06-16

Scans Setup

	Area Scan	Zoom Scan
Grid Extents [mm]	51.0 x 85.0	22.0 x 22.0 x 22.0
Grid Steps [mm]	8.5 x 8.5	3.4 x 3.4 x 1.4
Sensor Surface [mm]	3.0	1.4
Graded Grid	N/A	Yes
Grading Ratio	N/A	1.4
MAIA	N/A	N/A
Surface Detection	All points	All points
Scan Method	Measured	Measured

Measurement Results

	Area Scan	Zoom Scan
Date	2023-11-23	2023-11-23
psSAR1g [W/kg]	22.5	26.5
psSAR10g [W/kg]	4.29	4.86
psAPD (1.0cm2, sq) [W/m2]		265
psAPD (4.0cm2, sq) [W/m2]		118
Power Drift [dB]	0.07	0.04
Power Scaling	Disabled	Disabled
Scaling Factor [dB]		
TSL Correction	Positive only	Positive only
M2/M1 [%]		51.1
Dist 3dB Peak [mm]		4.6



Device Under Test Properties

Model, Manufacturer	Dimensions [mm]	IMEI	DUT Type
Device,	100.0 x 100.0 x 100.0		

Exposure Conditions

Phantom Section	Position, Test Distance [mm]	Band	Group, UID	Frequency [MHz], Channel Number	Conversion Factor
5G	FRONT, 10.00	Validation band	CW, 0--	10000.0, 10000	1.0

Hardware Setup

Phantom	Medium	Probe, Calibration Date	DAE, Calibration Date
mmWave - 1085	Air -	EUmmWV4 - SN9583_F1-55GHz, 2023-04-18	DAE4 Sn1486, 2023-06-16

Scans Setup

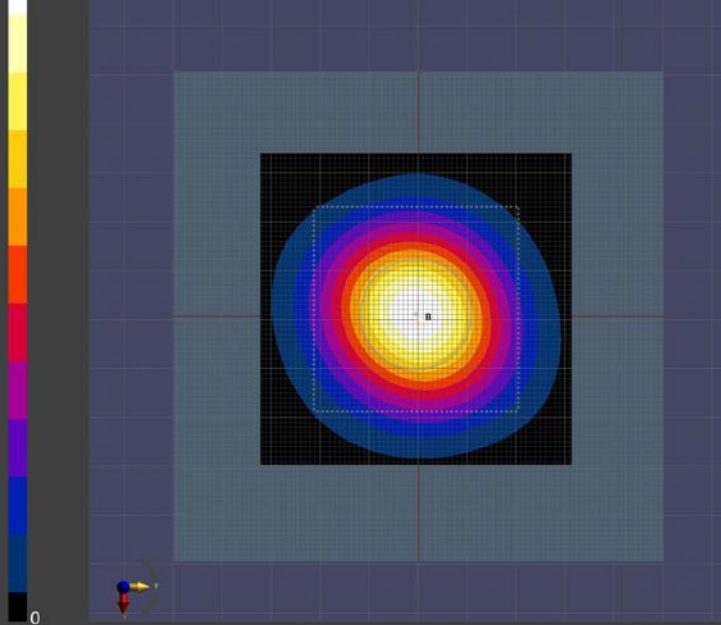
Scan Type	5G Scan
Grid Extents [mm]	60.0 x 60.0
Grid Steps [lambda]	0.125 x 0.125
Sensor Surface [mm]	10.0
MAIA	N/A

Measurement Results

Scan Type	5G Scan
Date	2023-11-25
Avg. Area [cm ²]	4.00
psPDn+ [W/m ²]	154
psPDtot+ [W/m ²]	157
psPDmod+ [W/m ²]	159
E _{max} [V/m]	273
Power Drift [dB]	0.02

sPDtot+ (4.0cm2, circ) [W/m^2]

157



0