



TEST REPORT

APPLICANT : Razer Inc.
PRODUCT NAME : Notebook PC
MODEL NAME : RZ09-0421
BRAND NAME : RAZER
FCC ID : RWO-RZ090421
STANDARD(S) : FCC 47CFR Part 2(2.1093)
IEC/IEEE 62209-1528
RECEIPT DATE : 2021-12-06
TEST DATE : 2021-12-29
ISSUE DATE : 2022-02-14

Edited by:

Gan Yueming
Gan Yueming (Rapporteur)

Approved by:

Shen Junsheng
Shen Junsheng (Supervisor)

NOTE: This document is issued by Shenzhen Morlab Communications Technology Co., the test report shall not be reproduced except in full without prior written permission of the company. The test results apply only to the particular sample(s) tested and to the specific tests carried out which is available on request for validation and information confirmed at our website.





DIRECTORY

1	SAR Results Summary.....	4
2	Technical Information	5
2.1	Applicant and Manufacturer Information	5
2.2	Equipment under Test (EUT) Description	5
2.3	Environment of Test Site	6
3	Introduction	7
3.1	Introduction	7
3.2	SAR Definition	7
4	RF Exposure Limits.....	8
4.1	Uncontrolled Environment	8
4.2	Controlled Environment	8
5	Applied Reference Documents.....	9
6	SAR Measurement System	10
6.1	E-Field Probe	11
6.2	Data Acquisition Electronics (DAE).....	12
6.3	Robot.....	12
6.4	Measurement Server	12
6.5	Light Beam Unit.....	13
6.6	Phantom.....	13
6.7	Device Holder	14
6.8	Data storage and Evaluation	15
6.9	Test Equipment List.....	17
7	Tissue Simulating Liquids	19
8	SAR System Verification.....	21
9	EUT Testing Position	24



10 Measurement Procedures.....25

10.1 Spatial Peak SAR Evaluation26

10.2 Power Reference Measurement26

10.3 Area Scan Procedures.....26

10.4 Zoom Scan Procedures27

10.5 SAR Averaged Methods27

10.6 Power Drift Monitoring27

11 Conducted Output Power28

12 Antenna Location29

13 SAR Test Results Summary.....30

13.1 Test Guidance30

13.2 Body SAR Data.....31

13.3 Interim Procedures for FCC RF Exposure Evaluations32

14 Simultaneous Transmission Analysis33

14.1 Simultaneous Transmission Consideration33

14.2 Simultaneous Transmission Analysis.....33

15 Measurement Uncertainty.....34

16 Measurement Conclusion.....36

Annex A General Information.....37

Annex B Test Setup Photos

Annex C Plots of System Performance Check

Annex D Plots of Maximum SAR Test Results

Annex E Maximum Target Conducted Power

Annex F DASY Calibration Certificate

Change History		
Version	Date	Reason for Change
1.0	2022-01-10	First edition
2.0	2022-02-14	Removed the modulation of 802.11a/n/ac and replaced V1.0



1 SAR Results Summary

The maximum results of Specific Absorption Rate (SAR) found during test as bellows:

Frequency Band		Highest SAR Summary	
		Body	
		1g SAR (W/kg)	
Wi-Fi 6E	U-NII-5	0.305	
	U-NII-6	0.359	
	U-NII-7	0.366	
	U-NII-8	0.308	

Highest Simultaneous Transmission SAR _{1g} (W/Kg):	0.619 W/Kg	Limit(W/kg): 1.6 W/kg
--	------------	-----------------------

Note:

1. This device is compliance with Specific Absorption Rate (SAR) for general population or uncontrolled exposure limits (1.6 W/kg) specified in FCC 47 CFR part 1 (1.1310) and ANSI/IEEE C95.1-2005, and had been tested in accordance with the measurement methods and procedures specified in IEC/IEEE 62209-1528.
2. When the test result is a critical value, we will use the measurement uncertainty give the judgment result based on the 95% confidence intervals.



2 Technical Information

Note: Provide by applicant.

2.1 Applicant and Manufacturer Information

Applicant:	Razer Inc.
Applicant Address:	9 Pasteur, Suite 100, Irvine, CA92618, USA
Manufacturer:	Razer Inc.
Manufacturer Address:	9 Pasteur, Suite 100, Irvine, CA92618, USA

2.2 Equipment under Test (EUT) Description

Product Name:	Notebook PC		
EUT No.:	1#		
Hardware Version:	APF21006_MB		
Software Version:	Windows 11		
Operation Frequency:	WLAN: U-NII-5: 5925 MHz ~ 6425 MHz U-NII-6: 6425 MHz ~ 6525 MHz U-NII-7: 6525 MHz ~ 6875 MHz U-NII-8: 6875 MHz ~ 7125 MHz		
Modulation technology:	802.11ax: OFDMA		
Antenna Gain:	WLAN Bands	Main Antenna(dBi)	Aux Antenna(dBi)
	U-NII-5	3.87	3.03
	U-NII-6	2.37	1.93
	U-NII-7	2.41	1.71
	U-NII-8	3.74	1.58

Note:

For a more detailed description, please refer to specification or user manual supplied by the applicant and/or manufacturer.



2.3 Environment of Test Site

Temperature:	18°C ~25°C
Humidity:	35%~75% RH
Atmospheric Pressure:	1010 mbar

Test Frequency:	U-NII-5: 5925 MHz ~ 6425 MHz U-NII-6: 6425 MHz ~ 6525 MHz U-NII-7: 6525 MHz ~ 6875 MHz U-NII-8: 6875 MHz ~ 7125 MHz
Operation Mode:	Call established

During SAR test, EUT is in Traffic Mode (Channel Allocated) at Normal Voltage Condition. A communication link is set up with a System Simulator (SS) by air link, and a call is established.

The EUT shall use its internal transmitter. The antenna(s), battery and accessories shall be those specified by the Factory. The EUT battery must be fully charged and checked periodically during the test to ascertain uniform power output. If a wireless link is used, the antenna connected to the output of the base station simulator shall be placed at least 50 cm away from the handset. The signal transmitted by the simulator to the antenna feeding point shall be lower than the output power level of the handset by at least 35 dB.

3 Introduction

3.1 Introduction

SAR is related to the rate at which energy is absorbed per unit mass in an object exposed to a radio field. The SAR distribution in a biological body is complicated and is usually carried out by experimental techniques or numerical modeling. The standard recommends limits for two tiers of groups, occupational or controlled and general population or uncontrolled, based on a person's awareness and ability to exercise control over his or her exposure. In general, occupational or controlled exposure limits are higher than the limits for general population or uncontrolled.

3.2 SAR Definition

The SAR definition is the time derivative (rate) of the incremental energy (dW) absorbed by (dissipated in) an incremental mass (dm) contained in a volume element (dv) of a given density (ρ). The equation description is as below:

$$SAR = \frac{d}{dt} \left(\frac{dU}{dm} \right) = \frac{d}{dt} \left(\frac{dU}{\rho dv} \right)$$

SAR is expressed in units of Watts per kilogram (W/kg)

SAR measurement can be either related to the temperature elevation in tissue by

$$SAR = C \left(\frac{\delta T}{\delta t} \right)$$

Where: C is the specific heat capacity, δT is the temperature rise and δt is the exposure duration, or related to the electrical field in the tissue by

$$SAR = \frac{\sigma \cdot E^2}{\rho}$$

Where: σ is the conductivity of the tissue, ρ is the mass density of the tissue and E is the RMS electrical field strength. However for evaluating SAR of low power transmitter, electrical field measurement is typically applied.



4 RF Exposure Limits

4.1 Uncontrolled Environment

Uncontrolled Environments are defined as locations where there is the exposure of individuals who have no knowledge or control of their exposure. The general population/uncontrolled exposure limits are applicable to situations in which the general public may be exposed or in which persons who are exposed as a consequence of their employment may not be made fully aware of the potential for exposure or cannot exercise control over their exposure. Members of the general public would come under this category when exposure is not employment-related; for example, in the case of a wireless transmitter that exposes persons in its vicinity.

4.2 Controlled Environment

Controlled Environments are defined as locations where there is exposure that may be incurred by persons who are aware of the potential for exposure, (i.e. as a result of employment or occupation). In general, occupational/controlled exposure limits are applicable to situations in which persons are exposed as a consequence of their employment, who have been made fully aware of the potential for exposure and can exercise control over their exposure. This exposure category is also applicable when the exposure is of a transient nature due to incidental passage through a location where the exposure levels may be higher than the general population/uncontrolled limits, but the exposed person is fully aware of the potential for exposure and can exercise control over his or her exposure by leaving the area or by some other appropriate means.

Limits for General Population/Uncontrolled Exposure (W/kg)

Type Exposure	Uncontrolled Environment Limit
Spatial Peak SAR (1g cube tissue for head and trunk)	1.6 W/kg
Spatial Peak SAR (10g cube tissue for limbs)	4.0 W/kg
Spatial Peak SAR (1g cube tissue for whole body)	0.08 W/kg

Note:

1. Occupational/Uncontrolled Environments are defined as locations where there is exposure that may be incurred by people who are aware of the potential for exposure (i.e. as a result of employment or occupation).
2. Whole-Body SAR is averaged over the entire body, partial-body SAR is averaged over any 1gram of tissue defined as a tissue volume in the shape of a cube. SAR for hands, wrists, feet and ankles is averaged over any 10 grams of tissue defined as a tissue volume in the shape of a cube.



5 Applied Reference Documents

Leading reference documents for testing:

Identity	Document Title	Method Determination /Remark
FCC 47CFR Part 2(2.1093)	Radio Frequency Radiation Exposure valuation: Portable Devices	No deviation
IEC/IEEE 62209-1528:2020	Measurement procedure for the assessment of specific absorption rate of human exposure to radio frequency fields from hand-held and body-mounted wireless communication devices –Part 1528: Human models, instrumentation, and procedures (Frequency range of 4 MHz to 10 GHz)	No deviation
KDB 447498 D01v06	General RF Exposure Guidance	No deviation
KDB 248227 D01v02r02	SAR Measurement Procedures for 802.11 Transmitters	No deviation
KDB 616217 D04 v01r01	SAR Evaluation Considerations for Laptop, Notebook, Netbook and Tablet Computers	No deviation
KDB 865664 D01v01r04	SAR Measurement 100 MHz to 6 GHz	No deviation
KDB 865664 D02v01r02	RF Exposure Reporting	No deviation
KDB 941225 D06v02r01	SAR Evaluation Procedures For Portable Devices With Wireless Router Capabilities	No deviation
<p>Note 1: The test item is not applicable.</p> <p>Note 2: Additions to, deviation, or exclusions from the method shall be judged in the "method determination" column of add, deviate or exclude from the specific method shall be explained in the "Remark" of the above table.</p>		

6 SAR Measurement System

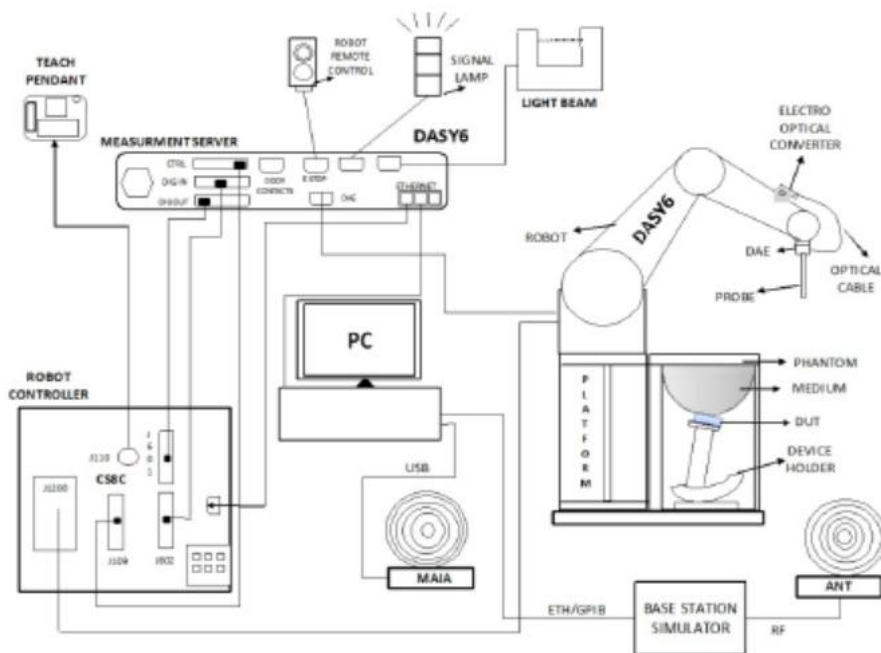


Fig.6.1 SPEAG DASY System Configurations

The DASY system for performance compliance tests is illustrated above graphically. This system consists of the following items:

- A standard high precision 6-axis robot with controller, a teach pendant and software.
- A data acquisition electronic (DAE) attached to the robot arm extension.
- A dosimetric probe equipped with an optical surface detector system.
- The electro-optical converter (EOC) performs the conversion between optical and electrical signals.
- A measurement server performs the time critical tasks such as signal filtering, control of the robot operation and fast movement interrupts.
- A probe alignment unit which improves the accuracy of the probe positioning.
- A computer operating Windows XP.
- DASY software.
- Remove control with teach pendant and additional circuitry for robot safety such as warning lamps, etc.
- The SAM twin phantom.
- A device holder.
- Tissue simulating liquid.
- Dipole for evaluating the proper functioning of the system.


Component details are described in the following sub-sections.

6.1 E-Field Probe

The SAR measurement is conducted with the dosimetric probe (manufactured by SPEAG). The probe is specially designed and calibrated for use in liquid with high permittivity. The dosimetric probe has special calibration in liquid at different frequency. This probe has a built in optical surface detection system to prevent from collision with phantom.

➤ E-Field Probe Specification

<EX3DV4 Probe>

Construction	Symmetrical design with triangular core Built-in shielding against static charges PEEK enclosure material (resistant to organic solvents, e.g., DGBE)	 <p style="text-align: center;">Fig 6.2 Photo of EX3DV4</p>
Frequency	10 MHz to 6 GHz; Linearity: ± 0.2 dB	
Directivity	± 0.3 dB in HSL (rotation around probe axis) ± 0.5 dB in tissue material (rotation normal to probe axis)	
Dynamic Range	10 μ W/g to 100 mW/g; Linearity: ± 0.2 dB	
Dimensions	Overall length: 330 mm (Tip: 20 mm) Tip diameter: 2.5 mm (Body: 12 mm) Typical distance from probe tip to dipole centers: 1 mm	

➤ E-Field Probe Calibration

Each probe needs to be calibrated according to a dosimetric assessment procedure with accuracy better than $\pm 10\%$. The spherical isotropy shall be evaluated and within ± 0.25 dB. The sensitivity parameters (Norm X, Norm Y and Norm Z), the diode compression parameter (DCP) and the conversion factor (ConvF) of the probe are tested. The calibration data can be referred to Annex E of this report.

6.2 Data Acquisition Electronics (DAE)

The Data acquisition electronics (DAE) consists of a highly sensitive electrometer-grade preamplifier with auto-zeroing, a channel and gain-switching multiplexer, a fast 16 bit AD-converter and a command decoder and control logic unit. Transmission to the measurement server is accomplished through an optical downlink for data and status information as well as an optical uplink for commands and the clock. The input impedance of the DAE is 200 MOhm; the inputs are symmetrical and floating. Common mode rejection is above 80 dB.



Fig 6.2 Photo of DAE

6.3 Robot

The SPEAG DASY system uses the high precision robots (DASY5: TX60XL) type from Stäubli SA (France). For the 6-axis controller system, the robot controller version (DASY5: CS8c) from Stäubli is used. The Stäubli robot series have many features that are important for our application:

- High precision (repeatability 0.02 mm)
- High reliability (industrial design)
- Low maintenance costs (virtually maintenance free due to direct drive gears; nobelt drives)
- Jerk-free straight movements
- Low ELF interference (motor control fields shielded via the closed metallic construction shields)



Fig. 6.3 Photo of Robot

6.4 Measurement Server

The measurement server is based on a PC/104 CPU board with CPU (DASY 5: 400MHz, Intel Celeron), chip-disk (DASY5: 128 MB), RAM (DASY5: 128 MB). The necessary circuits for communication with the DAE electronic box, as well as the 16 bit AD converter system for optical detection and digital I/O interface are contained on the DASY I/O board, which is directly connected to the PC/104 bus of the CPU board.

The measurement server performs all the real-time data evaluation for field measurements and surface detection, controls robot movements and handles safety operations.



Fig. 6.4 Photo of Server for DASY5

6.5 Light Beam Unit

The light beam switch allows automatic "tooling" of the probe. During the process, the actual position of the probe tip with respect to the robot arm is measured, as well as the probe length and the horizontal probe offset. The software then corrects all movements, such that the robot coordinates are valid for the probe tip.

The repeatability of this process is better than 0.1 mm. If a position has been taught with an aligned probe, the same position will be reached with another aligned probe within 0.1 mm, even if the other probe has different dimensions. During probe rotations, the probe tip will keep its actual position.



Fig. 6.5 Photo of Light Beam

6.6 Phantom

<SAM Twin Phantom>

Shell Thickness	2 ± 0.2 mm (sagging: <1%) Center ear point: 6 ± 0.2 mm
Filling Volume Dimensions	Approx. 25 liters Length: 1000 mm; Width: 500 mm; Height: adjustable feet
Measurement Areas	Left Head, Right Head, Flat phantom

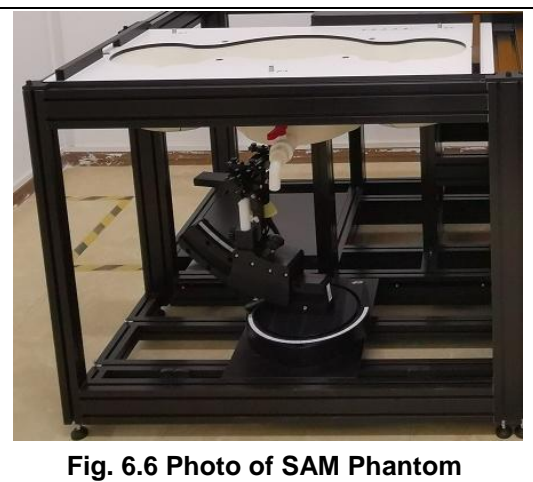


Fig. 6.6 Photo of SAM Phantom

The bottom plate contains three pair of bolts for locking the device holder. The device holder positions are adjusted to the standard measurement positions in the three sections. A white cover is provided to tap the phantom during off-periods to prevent water evaporation and changes in the

liquid parameters. On the phantom top, three reference markers are provided to identify the phantom position with respect to the robot.

6.7 Device Holder

<Device Holder for SAM Twin Phantom>

The SAR in the phantom is approximately inversely proportional to the square of the distance between the source and the liquid surface. For a source at 5 mm distance, a positioning uncertainty of ± 0.5 mm would produce a SAR uncertainty of ± 20 %. Accurate device positioning is therefore crucial for accurate and repeatable measurements. The positions in which the devices must be measured are defined by the standards.

The DASY device holder is designed to cope with different positions given in the standard. It has two scales for the device rotation (with respect to the body axis) and the device inclination (with respect to the line between the ear reference points). The rotation center for both scales is the ear reference point (ERP).

Thus the device needs no repositioning when changing the angles.

The DASY device holder is constructed of low-loss POM material having the following dielectric parameters: relative permittivity $\epsilon = 3$ and loss tangent $\delta = 0.02$. The amount of dielectric material has been reduced in the closest vicinity of the device, since measurements have suggested that the influence of the clamp on the test results could thus be lowered.

<Laptop Extension Kit>

The extension is lightweight and made of POM, acrylic glass and foam. It fits easily on the upper part of the mounting device in place of the phone positioned. The extension is fully compatible with the SAM Twin and ELI phantoms.



Fig 6.7 Device Holder



Fig 6.8 Laptop Extension Kit



6.8 Data storage and Evaluation

➤ Data Storage

The DASY software stores the assessed data from the data acquisition electronics as raw data (in microvolt readings from the probe sensors), together with all the necessary software parameters for the data evaluation (probe calibration data, liquid parameters and device frequency and modulation data) in measurement files. The post-processing software evaluates the desired unit and format for output each time the data is visualized or exported. This allows verifications of the complete software setup even after the measurement and allows correction of erroneous parameter settings. For example, if a measurement has been performed with an incorrect crest factor parameter in the device setup, the parameter can be corrected afterwards and the data can be reevaluated.

The measured data can be visualized or exported in different units or formats, depending on the selected probe type (e.g., [V/m], [mW/g]). Some of these units are not available in certain situations or give meaningless results, e.g., a SAR-output in a non-lose media, will always be zero. Raw data can also be exported to perform the evaluation with other software packages.

➤ Data Evaluation

The DASY post-processing software (SEMCAD) automatically executes the following procedures to calculate the field units from the microvolt readings at the probe connector. The parameters used in the evaluation are stored in the configuration modules of the software:

Probe Parameters:	- Sensitivity	Norm _i , a _{i0} , a _{i1} , a _{i2}
	- Conversion	ConvF _i
	- Diode compression point	dcp _i
Device Parameters:	- Frequency	f
	- Crest	cf
Media Parameters:	- Conductivity	σ
	- Density	ρ

These parameters must be set correctly in the software. They can be found in the component documents or they can be imported into the software from the configuration files issued for the DASY components. In the direct measuring mode of the multi-meter option, the parameters of the actual system setup are used. In the scan visualization and export modes, the parameters stored in the corresponding document files are used.

The first step of the evaluation is a linearization of the filtered input signal to account for the compression characteristics of the detector diode. The compensation depends on the input signal, the diode type and the DC-transmission factor from the diode to the evaluation electronics. If the



exciting field is pulsed, the crest factor of the signal must be known to correctly compensate for peak power.

The formula for each channel can be given as:

$$V_i = U_i + U_i^2 \cdot \frac{cf}{dcp_i}$$

With V_i = compensated signal of channel i, (i = x, y, z)

U_i = input signal of channel i, (i = x, y, z)

cf = crest factor of exciting field (DASY parameter)

dcpⁱ = diode compression point (DASY parameter)

From the compensated input signals, the primary field data for each channel can be evaluated:

$$\text{E- Field Probes: } E_i = \sqrt{\frac{V_i}{\text{Norm}_i \cdot \text{ConvF}}}$$

$$\text{H-Field Probes: } H_i = \sqrt{V_i} \cdot \frac{a_{i0} + a_{i1}f + a_{i2}f^2}{f}$$

With V_i = compensated signal of channel i, (i = x, y, z)

Norm_i = sensor sensitivity of channel i, (i = x, y, z), $\mu\text{V}/(\text{V/m})^2$

ConvF = sensitivity enhancement in solution

a_{ij} = sensor sensitivity factors for H-field probes

f = carrier frequency (GHz)

E_i = electric field strength of channel i in V/m

H_i = magnetic field strength of channel i in A/m

The RSS value of the field components gives the total field strength (Hermitian magnitude):

$$E_{\text{tot}} = \sqrt{E_x^2 + E_y^2 + E_z^2}$$

The primary field data are used to calculate the derived field units.

$$\text{SAR} = E_{\text{tot}}^2 \cdot \frac{\sigma}{\rho \cdot 1000}$$

With SAR = local specific absorption rate in mW/g

E_{tot} = total field strength in V/m

σ = conductivity in (mho/m) or (Siemens/m)

ρ = equipment tissue density in g/cm³

Note that the density is set to 1, to account for actual head tissue density rather than the density of the tissue simulating liquid.



6.9 Test Equipment List

Manufacturer	Name of Equipment	Type/Model	Serial Num.	Calibration	
				Last Cal.	Due Date
SPEAG	D6.5GHz System Validation Kit	D6.5GHzV2	1054	2021.11.01	2024.10.31
SPEAG	DOSIMETRIC ASSESSMENT SYSTEM	cDASY6	16.0.0.116	NCR	NCR
SPEAG	Dosimetric E-Field Probe	EX3DV4	7628	2021.02.16	2022.02.15
SPEAG	Data Acquisition Electronics	DAE4	1353	2021.10.19	2022.10.18
SPEAG	Dielectric Assessment KIT	DAK-3.5	1279	2021.10.20	2022.10.19
SPEAG	Twin-SAM	QD 000 P41 Ax	2020	NCR	NCR
SPEAG	Phone Positioner	N/A	N/A	NCR	NCR
R&S	Network Emulator	CMW500	165755	2021.02.25	2022.02.24
Agilent	Network Analyzer	E5071B	MY42404762	2021.03.29	2022.03.28
mini-circuits	Amplifier	ZHL-42W+	608501717	NCR	NCR
Agilent	Signal Generator	N5182B	MY53050509	2021.03.25	2022.03.24
Agilent	Power Sensor	N8482A	MY41090849	2021.10.21	2022.10.20
Agilent	Power Meter	E4416A	MY45102093	2021.10.21	2022.10.20
Anritsu	Power Sensor	MA2411B	N/A	2021.10.21	2022.10.20
Anritsu	Power Meter	NRVD	101066	2021.10.21	2022.10.20
Agilent	Dual Directional Coupler	778D	50422	NA	NA
MCL	Attenuation	351-218-010	N/A	NA	NA
KTJ	Thermo meter	TA298	N/A	2021.01.15	2022.01.14
SPEAG	Tissue Simulating Liquids	HBBL600-10000V6		24H	

Note:

1. The calibration certificate of DASY can be referred to Annex E of this report.
2. Referring to KDB 865664 D01v01r04, the dipole calibration interval can be extended to 3 years with justification. The dipoles are also not physically damaged, or repaired during the interval.
3. The Insertion Loss calibration of Dual Directional Coupler and Attenuator were characterized via the network analyzer and compensated during system check.
4. The dielectric probe kit was calibrated via the network analyzer, with the specified procedure (calibrated in pure water) and calibration kit (standard) short circuit, before the dielectric measurement. The specific procedure and calibration kit are provided by Speag.
5. In system check we need to monitor the level on the power meter, and adjust the power amplifier level to have precise power level to the dipole; the measured SAR will be normalized to 1W input power according to the ratio of 1W to the input power to the dipole. For system check, the calibration of the power amplifier is deemed not critically required for correct



measurement; the power meter is critical and we do have calibration for it

6. Attenuator insertion loss is calibrated by the network Analyzer, which the calibration is valid, before system check.
7. N.C.R means No Calibration Requirement.

7 Tissue Simulating Liquids

➤ Description of Tissue Simulation Liquids

For the measurement of the field distribution inside the SAM phantom with DASY, the phantom must be filled with around 25 liters of homogeneous body tissue simulating liquid. For head SAR testing, the liquid height from the ear reference point (ERP) of the phantom to the liquid top surface is larger than 15 cm, which is shown in Fig. 7.1, for body SAR testing, the liquid height from the centre of the flat phantom to liquid top surface is larger than 15 cm, which is shown in Fig. 7.2.

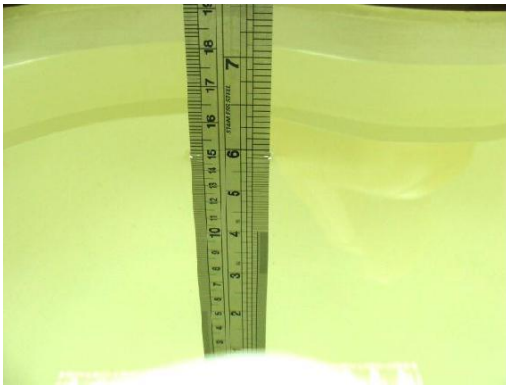


Fig 7.1 Photo of Liquid Height for Head SAR



Fig 7.2 Photo of Liquid Height for Body SAR

➤ Target Dielectric Properties of the Tissue-equivalent Liquid Material

The relative permittivity and conductivity of the tissue material should be within $\pm 5\%$ of the values given in the table below recommended by the FCC OET 65 supplement C.

Frequency (MHz)	Head Tissue Simulating Media	
	ϵ_r (F/m)	σ (S/m)
6000	35.07	5.48
6500	34.46	6.07
7000	33.88	6.65

(ϵ_r = relative permittivity, σ = conductivity and $\rho = 1000 \text{ kg/m}^3$)

The dielectric parameters of liquids were verified prior to the SAR evaluation using a Speag Dielectric Probe Kit and an Agilent Network Analyzer.

The following table shows the measuring results for simulating liquid.

**Table 1: Dielectric Performance of Tissue Simulating Liquid**

Frequency (MHz)	Tissue Type	Liquid Temp.(°C)	Conductivity (σ)	Conductivity Target (σ)	Delta (σ) (%)	Limit (%)	Date
6500	HSL	22.2	6.27	6.07	3.29	±5	2021.12.29

Frequency (MHz)	Tissue Type	Liquid Temp.(°C)	Permittivity (ϵ_r)	Permittivity Target (ϵ_r)	Delta (ϵ_r) (%)	Limit (%)	Date
6500	HSL	22.2	33.6	34.5	-2.61	±5	2021.12.29

Note:

According to April 2019 TCB Workshop that FCC has permitted the use of single head-tissue simulating liquid specified in IEC 62209-1 for all SAR tests.



8 SAR System Verification

Each DASY system is equipped with one or more system validation kits. These units, together with the predefined measurement procedures within the DASY software, enable the user to conduct the system performance check and system validation. System validation kit includes a dipole, tripod holder to fix it underneath the flat phantom and a corresponding distance holder.

➤ System Validation

According to FCC KDB 865664 D02, SAR system verification is required to confirm measurement accuracy. The SAR systems (including SAR probes, system components and software versions) used for this device were validated against its performance specifications prior to the SAR measurements. Reference dipoles are used with the required tissue-equivalent media for system validation, according to the procedures outlined in FCC KDB 865664 D01 and IEEE 1528-2013. Since SAR probe calibrations are frequency dependent, each probe calibration point must be validated at a frequency within the valid frequency range of the probe calibration point, using the system that normally operates with the probe for routine SAR measurements and according to the required tissue-equivalent media. A tabulated summary of the system validation status, measurement frequencies, SAR probes, calibrated signal type(s) and tissue dielectric parameters has been included.

➤ Purpose of System Performance check

The system performance check verifies that the system operates within its specifications. System and operator errors can be detected and corrected. It is recommended that the system performance check be performed prior to any usage of the system in order to guarantee reproducible results. The system performance check uses normal SAR measurements in a simplified setup with a well characterized source. This setup was selected to give a high sensitivity to all parameters that might fail or vary over time. The system check does not intend to replace the calibration of the components, but indicates situations where the system uncertainty is exceeded due to drift or failure.

➤ System Setup

In the simplified setup for system evaluation, the EUT is replaced by a calibrated dipole and the power source is replaced by a continuous wave that comes from a signal generator. The calibrated dipole must be placed beneath the flat phantom section of the SAM twin phantom with the correct distance holder. The distance holder should touch the phantom surface with a light pressure at the reference marking and be oriented parallel to the long side of the phantom. The equipment setup is shown below:



Fig 8.1 Photo of Dipole Setup

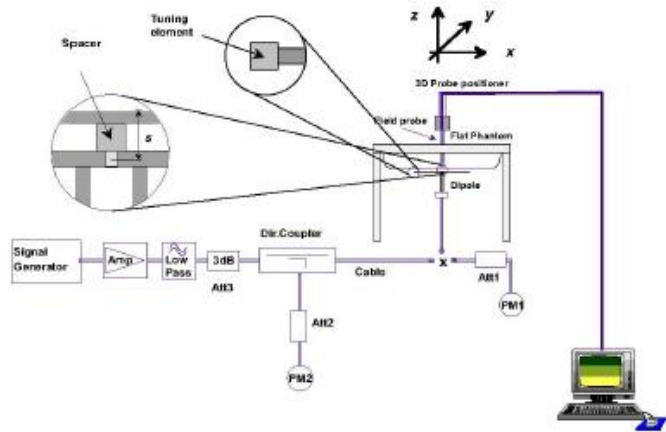


Fig 8.2 System Setup for System Evaluation

➤ **System Verification Results**

Comparing to the original SAR value provided by SPEAG, the verification data should be within its specification of 10%. Below table shows the target SAR and measured SAR after normalized to 1W input power. The table as below indicates the system performance check can meet the variation criterion and the plots can be referred to Annex C of this report.

Dipole S/N	Input Power (mW)	Probe S/N	DAE S/N
D6.5GHzV2-1054	100	7628	1353

Frequency (MHz)	Tissue Type	Conductivity (σ)	Permittivity (ϵ_r)	CW Signal Validation		
				Sensitivity	Probe Linearity	Probe Isotropy
750	HSL	0.851	42.43	PASS	PASS	PASS
835	HSL	0.898	41.88	PASS	PASS	PASS
1750	HSL	1.386	39.91	PASS	PASS	PASS
1800	HSL	1.449	41.26	PASS	PASS	PASS
1900	HSL	1.435	39.65	PASS	PASS	PASS
2000	HSL	1.451	39.42	PASS	PASS	PASS
2300	HSL	1.764	38.99	PASS	PASS	PASS
2450	HSL	1.863	38.85	PASS	PASS	PASS
2600	HSL	1.973	38.58	PASS	PASS	PASS
5250	HSL	4.528	35.32	PASS	PASS	PASS
5600	HSL	4.905	34.89	PASS	PASS	PASS
5750	HSL	5.077	34.28	PASS	PASS	PASS
6500	HSL	6.07	34.46	PASS	PASS	PASS



Frequency (MHz)	Tissue Type	Conductivity (σ)	Permittivity (ϵ_r)	Modulation Signal Validation		
				Mod. Type	Duty Factor	PAR
750	HSL	0.851	42.43	N/A	N/A	N/A
835	HSL	0.898	41.88	GMSK	PASS	N/A
1750	HSL	1.386	39.91	N/A	N/A	N/A
1800	HSL	1.449	41.26	N/A	N/A	N/A
1900	HSL	1.435	39.65	GMSK	PASS	N/A
2000	HSL	1.451	39.42	GMSK	PASS	N/A
2300	HSL	1.764	38.99	OFDM	PASS	PASS
2450	HSL	1.863	38.85	OFDM	PASS	PASS
2600	HSL	1.973	38.58	TDD	PASS	N/A
5250	HSL	4.528	35.32	OFDM	N/A	PASS
5600	HSL	4.905	34.89	OFDM	N/A	PASS
5750	HSL	5.077	34.28	OFDM	N/A	PASS
6500	HSL	6.07	34.46	OFDM	N/A	PASS

<Validation Results>

Date	Freq. (MHz)	Tissue Type	Measured 1g SAR (W/kg)	Targeted 1g SAR (W/kg)	Normalized 1g SAR (W/kg)	Deviation (%)
2021.12.29	6500	HSL	26.8	248.0	268.0	8.06

Date	Freq. (MHz)	Tissue Type	Measured 1g SAR (W/kg)	Targeted 1g SAR (W/kg)	Normalized 1g SAR (W/kg)	Deviation (%)
2021.12.29	6500	HSL	5.62	52.1	56.2	7.87

Note: System checks the specific test data please see Annex C.

9 EUT Testing Position

According to KDB 616217 D04, SAR measurement is required for the bottom surface of the keyboard of the laptop PC and positioned against the flat phantom. The required minimum test separation distance for incorporating transmitters and antennas into laptop computer display is determined with the display screen opened at an angle of 90° to the keyboard compartment.

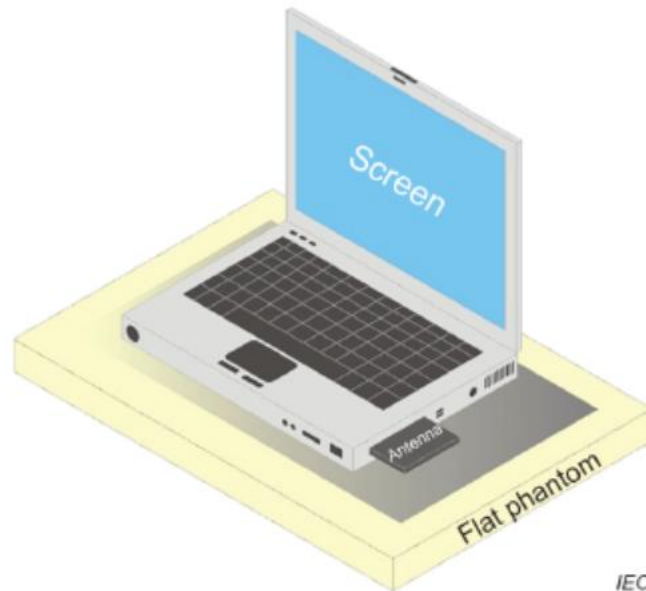


Fig.9.1 Illustration for Body Position

10 Measurement Procedures

The measurement procedures are as bellows:

<Conducted power measurement>

- For WWAN power measurement, use base station simulator to configure EUT WWAN transition in conducted connection with RF cable, at maximum power in each supported wireless interface and frequency band.
- Read the WWAN RF power level from the base station simulator.
- For WLAN/BT power measurement, use engineering software to configure EUT WLAN/BT continuously transmission, at maximum RF power in each supported wireless interface and frequency band.
- Connect EUT RF port through RF cable to the power meter or spectrum analyzer, and measure WLAN/BT output power.

<Conducted power measurement>

- Use base station simulator to configure EUT WWAN transmission in radiated connection, and engineering software to configure EUT WLAN/BT continuously transmission, at maximum RF power, in the highest power channel.
- Place the EUT in positions as Annex B demonstrates.
- Set scan area, grid size and other setting on the DASY software.
- Measure SAR results for the highest power channel on each testing position.
- Find out the largest SAR result on these testing positions of each band.
- Measure SAR results for other channels in worst SAR testing position if the Reported SAR or highest power channel is larger than 0.8 W/kg.

According to the test standard, the recommended procedure for assessing the peak spatial-average SAR value consists of the following steps:

- Power reference measurement.
- Area scan.
- Zoom scan.
- Power drift measurement.



10.1 Spatial Peak SAR Evaluation

The procedure for spatial peak SAR evaluation has been implemented according to the test standard. It can be conducted for 1g and 10g, as well as for user-specific masses. The DASY software includes all numerical procedures necessary to evaluate the spatial peak SAR value.

The base for the evaluation is a “cube” measurement. The measured volume must include the 1g and 10 g cubes with the highest averaged SAR values. For that purpose, the center of the measured volume is aligned to the interpolated peak SAR value of a previously performed area scan.

The entire evaluation of the spatial peak values is performed within the post-processing engine (SEMCAD). The system always gives the maximum values for 1g and 10g cubes. The algorithm to find the cube with highest averaged SAR is divided into the following stages:

- Extraction of the measured data (grid and values) from the Zoom Scan.
- Calculation of the SAR value at every measurement point based on all stored data (A/D values and measurement parameters).
- Generation of a high-resolution mesh within the measured volume.
- Interpolation of all measured values from the measurement grid to the high-resolution grid
- Extrapolation of the entire 3-D field distribution to the phantom surface over the distance from sensor to surface
- Calculation of the averaged SAR within masses of 1g and 10g.

10.2 Power Reference Measurement

The Power Reference Measurement and Power Drift Measurement are for monitoring the power drift of the device under test in the batch process. The minimum distance of probe sensors to surface determines the closest measurement point to phantom surface. This distance cannot be smaller than the distance of sensor calibration points to probe tip as defined in the probe properties.

10.3 Area Scan Procedures

Area scans are defined prior to the measurement process being executed with a user defined variable spacing between each measurement point (integral) allowing low uncertainty measurements to be conducted. Scans defined for FCC applications utilize a 10mm^2 step integral, with 1mm interpolation used to locate the peak SAR area used for zoom scan assessments.



When an Area Scan has measured all reachable points, it computes the field maxima found in the scanned area, within a range of the global maximum. The range (in dB) is specified in the standards for compliance testing.

10.4 Zoom Scan Procedures

Zoom Scans are used to assess the peak spatial SAR values within a cubic averaging volume containing 1 g and 10 g of simulated tissue. A density of 1000 kg/m^3 is used to represent the head and body tissue density and not the phantom liquid density, in order to be consistent with the definition of the liquid dielectric properties, i.e. the side length of the 1g cube is 10mm, with the side length of the 10 g cube 21,5mm. The zoom scan integer steps can be user defined so as to reduce uncertainty, but normal practice for typical test applications utilize a physical step of 5x5x7 (8mmx8mmx5mm) providing a volume of 32mm in the X & Y axis, and 30mm in the Z axis.

10.5 SAR Averaged Methods

In DASYS, the interpolation and extrapolation are both based on the modified Quadratic Sheppard's method. The interpolation scheme combines a least-square fitted function method and a weighted average method which are the two basic types of computational interpolation and approximation.

Extrapolation routines are used to obtain SAR values between the lowest measurement points and the inner phantom surface. The extrapolation distance is determined by the surface detection distance and the probe sensor offset. The uncertainty increases with the extrapolation distance. To keep the uncertainty within 1% for the 1g and 10g cubes, the extrapolation distance should not be larger than 5 mm.

10.6 Power Drift Monitoring

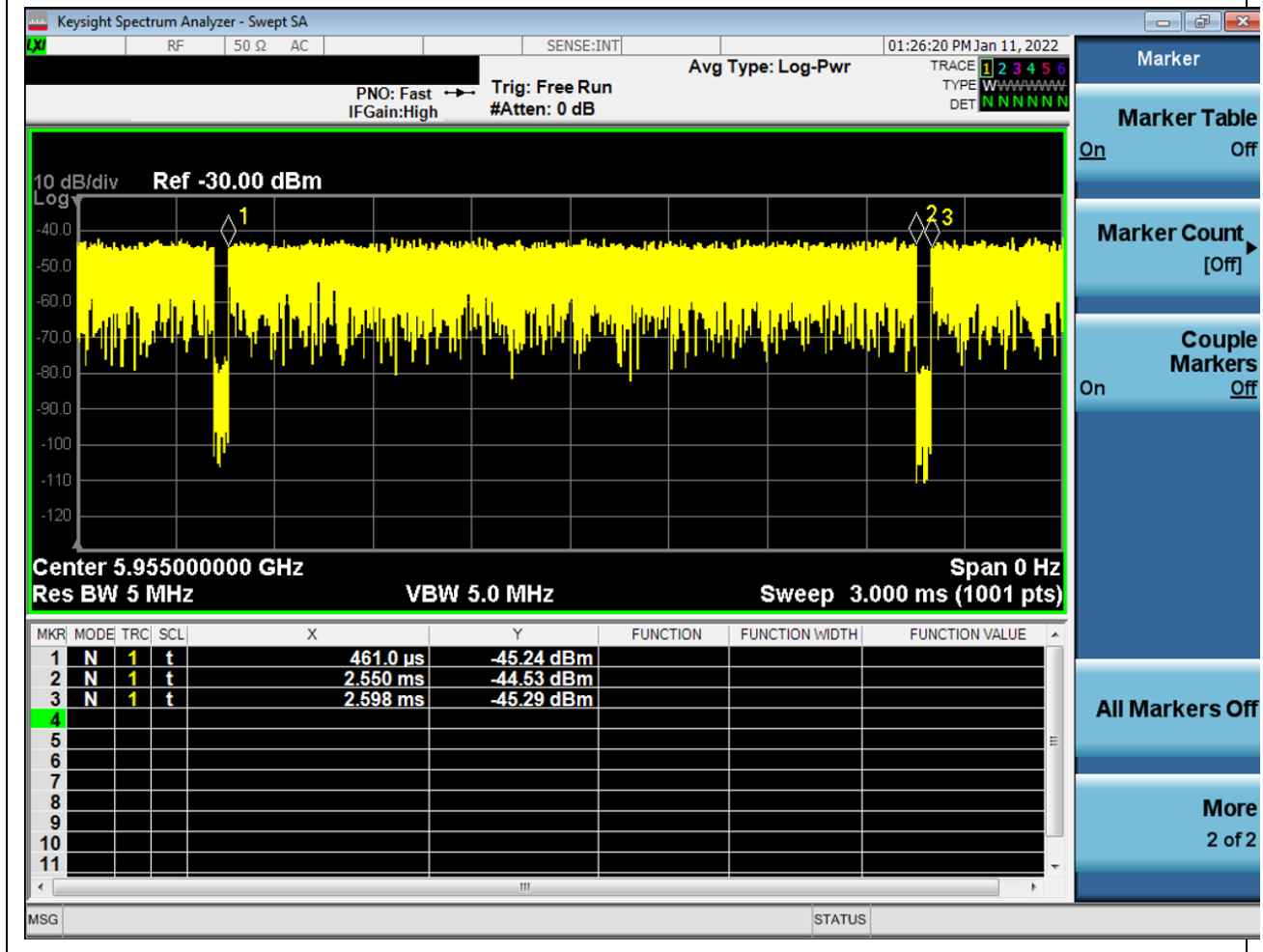
All SAR testing is under the EUT install full charged battery and transmit maximum output power. In DASYS measurement software, the power reference measurement and power drift measurement procedures are used for monitoring the power drift of EUT during SAR test. Both these procedures measure the field at a specified reference position before and after the SAR testing. The software will calculate the field difference in dB. If the power drifts more than 5%, the SAR will be retested.



11 Conducted Output Power

➤ Duty Cycle

Test Mode	On Time (ms)	On+Off Time (ms)	Duty Cycle
802.11ax160	2.089	2.137	97.75%



➤ Conducted Power of Wi-Fi 6E

Remark: The conducted power of Wi-Fi 6E was recorded in annex E.

12 Antenna Location

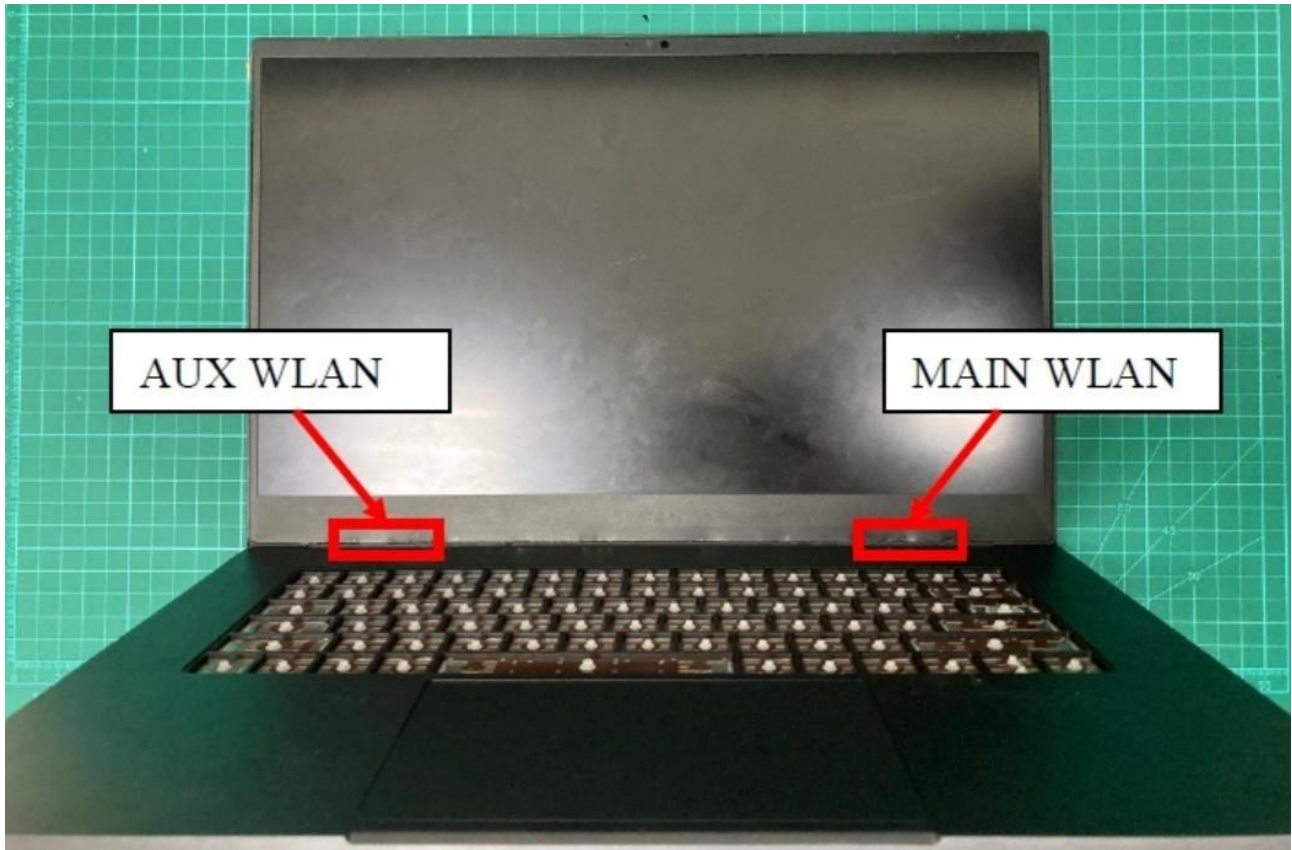


Fig.12.1 EUT Antenna Locations

➤ Body SAR Measurement Position

Antenna	Back of Keyboard	Back of Screen
Main Antenna	Yes	No
Aux Antenna	Yes	No



13 SAR Test Results Summary

13.1 Test Guidance

1. The reported SAR is the measured SAR value adjusted for maximum tune-up tolerance.
 - a. Tune-up scaling Factor = tune-up limit power (mW) / EUT RF power (mW), where tune-up limit is the maximum rated power among all production units.
 - b. For SAR testing of WLAN signal with non-100% duty cycle, the measured SAR is scaled-up by the duty cycle scaling factor which is equal to "1/(duty cycle)".
 - c. For WLAN/Bluetooth: Reported SAR(W/kg)= Measured SAR(W/kg)* Duty Cycle scaling factor * Tune-up scaling factor.
2. Per KDB 447498 D01v06, for each exposure position, testing of other required channels within the operating mode of a frequency band is not required when the *reported* 1-g or 10-g SAR for the mid-band or highest output power channel is:
 - a. ≤ 0.8 W/kg or 2.0 W/kg, for 1-g or 10-g respectively, when the transmission band is ≤ 100 MHz
 - b. ≤ 0.6 W/kg or 1.5 W/kg, for 1-g or 10-g respectively, when the transmission band is between 100 MHz and 200 MHz
 - c. ≤ 0.4 W/kg or 1.0 W/kg, for 1-g or 10-g respectively, when the transmission band is ≥ 200 MHz
3. Per KDB248227 D01v02r02, a Wi-Fi device must be configured to transmit continuously at the required data rate, channel bandwidth and signal modulation, using the highest transmission duty factor supported by the test mode tools for SAR measurement. The test frequencies established using test mode must correspond to the actual channel frequencies required for operations in the U.S. When 802.11 frame gaps are accounted for in the transmission, a maximum transmission duty factor of 92 - 96% is typically achievable in most test mode configurations. A minimum transmission duty factor of 85% is required to avoid certain hardware and device implementation issues related to wide range SAR scaling. In addition, a periodic transmission duty factor is required for current generation SAR systems to measure SAR correctly. Unless it is permitted by specific KDB procedures or continuous transmission is specifically restricted by the device, the reported SAR must be scaled to 100% transmission duty factor to determine compliance at the maximum tune-up tolerance limit. When a device is not capable of sustaining continuous transmission or the output can become nonlinear, and it is limited by hardware design and unable to transmit at higher than 85% duty factor, a periodic duty factor within 15% of the maximum duty factor the device is capable of transmitting should be used. The reported SAR must be scaled to the maximum transmission duty factor to determine compliance. Descriptions of the procedures applied to establish the specific duty factor used for SAR testing are required in SAR reports to support the test results.



13.2 Body SAR Data

Plot No.	Band/Mode	Test Position	Antenna	CH.	Ave. Power (dBm)	Tune-up Limit (dBm)	Tune-up Scaling Factor	Meas. SAR _{1g} (W/kg)	Reported SAR _{1g} (W/kg)
1#	U-NII-5	Bottom Face	Main	15	13.44	13.5	1.014	0.294	0.305
	U-NII-5	Bottom Face	Main	47	13.37	13.5	1.030	0.258	0.272
	U-NII-5	Bottom Face	Main	79	13.35	13.5	1.035	0.276	0.292
	U-NII-5	Bottom Face	Aux	15	13.49	13.5	1.002	0.218	0.224
	U-NII-5	Bottom Face	Aux	47	13.19	13.5	1.074	0.230	0.253
	U-NII-5	Bottom Face	Aux	79	13.09	13.5	1.099	0.201	0.226
2#	U-NII-6	Bottom Face	Main	111	13.06	13.5	1.107	0.317	0.359
	U-NII-6	Bottom Face	Aux	111	13.4	13.5	1.023	0.198	0.207
	U-NII-7	Bottom Face	Main	143	13.45	13.5	1.012	0.289	0.299
3#	U-NII-7	Bottom Face	Main	175	12.6	13.0	1.096	0.326	0.366
	U-NII-7	Bottom Face	Aux	143	13.06	13.5	1.107	0.201	0.228
	U-NII-7	Bottom Face	Aux	175	12.72	13.0	1.067	0.209	0.228
4#	U-NII-8	Bottom Face	Main	207	12.78	13.0	1.052	0.286	0.308
	U-NII-8	Bottom Face	Aux	207	12.73	13.0	1.064	0.175	0.191

Note:

1. Per KDB 447498 D01v06, for each exposure position, if the highest output channel Reported SAR $\leq 0.8W/kg$, other channels SAR testing is not necessary.
2. Additional WLAN SAR testing was performed for simultaneous transmission analysis.
3. Per KDB 865664 D01v01r04, for each frequency band, repeated SAR measurement is required when the measured SAR is $\geq 0.8W/kg$.
4. According to KDB 865664 D02v01r02, SAR plot is required for the highest measured SAR in each exposure configuration, wireless mode and frequency band combination.
5. The WLAN Reported 1g SAR (W/kg) has been calculated together with the duty cycle scaling factor 1.023.
6. There is a protrusion less than 5mm on the bottom of this device, the 0mm distance with its thickness was tested and maximum scaled SAR is less than 1.2W/kg on 1-g.

13.3 Interim Procedures for FCC RF Exposure Evaluations

Interim procedures for FCC radiofrequency (RF) exposure evaluations of U-NII 6-7 GHz band portable devices have been made available during the TCB workshop in April 2021. The procedure is summarized below:

1. Evaluate SAR / APD with DASY8 Module SAR V16.0 or higher. The configurations to be tested are defined in the relevant Knowledge Database (KDB). The psSAR and absorbed psPD are reported.
2. For the configuration with the highest SAR, evaluate the incident power density with DASY6 Module mmWave V2.4.2 or higher. The incident psPD must be adjusted per amount that the measurement uncertainty exceeds 30% before it is included in the test report.
3. The maximum preliminary numerical measured SAR and estimated APD values of the two antennas are show in the table below:

Band/Mode	Test Position	Antenna	CH.	Frequency (MHz)	Measured SAR _{1g} (W/kg)	APD over 4cm ² (W/m ²)
U-NII-5	Bottom Face	MAIN	15	6025	0.294	2.25
U-NII-5	Bottom Face	MAIN	47	6185	0.258	1.97
U-NII-5	Bottom Face	MAIN	79	6345	0.276	2.09
U-NII-5	Bottom Face	AUX	15	6025	0.218	1.72
U-NII-5	Bottom Face	AUX	47	6185	0.23	1.84
U-NII-5	Bottom Face	AUX	79	6345	0.201	1.6
U-NII-6	Bottom Face	MAIN	111	6505	0.317	2.16
U-NII-6	Bottom Face	AUX	111	6505	0.198	1.6
U-NII-7	Bottom Face	MAIN	143	6665	0.289	2.09
U-NII-7	Bottom Face	MAIN	175	6825	0.326	2.32
U-NII-7	Bottom Face	AUX	143	6665	0.201	1.63
U-NII-7	Bottom Face	AUX	175	6825	0.209	1.69
U-NII-8	Bottom Face	MAIN	207	6985	0.286	2.06
U-NII-8	Bottom Face	AUX	207	6985	0.175	1.38

Note:

The EUT was directly contact the phantom under SAR measurement.

14 Simultaneous Transmission Analysis

14.1 Simultaneous Transmission Consideration

No.	Simultaneous Transmission Consideration	Body Exposure Condition
1	Wi-Fi 6E_Main ANT + AUX ANT	Yes
2	Wi-Fi 6E_Aux ANT + Bluetooth Main ANT	Yes

Note:

1. Simultaneous Transmission SAR evaluation is not required for BT and Wi-Fi, because the software mechanism have been incorporated to guarantee that the WLAN and Bluetooth transmitters would not simultaneously operate.
2. Per KDB 447498D01v06, simultaneous transmission SAR evaluation procedures is as followed:
 - Step 1: If sum of 1 g SAR <1.6 W/kg, Simultaneous SAR measurement is not required.
 - Step 2: If sum of 1 g SAR >1.6 W/kg, ratio of SAR to peak separation distance for pair of transmitters calculated.
 - Step 3: If the ratio of SAR to peak separation distance is ≤ 0.04 , Simultaneous SAR measurement is not required.
 - Step 4: If the ratio of SAR to peak separation distance is > 0.04 , Simultaneous SAR measurement is required and simultaneous transmission SAR value is calculated.
(The ratio is determined by: $(SAR_1 + SAR_2) \wedge 1.5/R_i \leq 0.04$,
 R_i is the separation distance between the peak SAR locations for the antenna pair in mm.

14.2 Simultaneous Transmission Analysis

Exposure Position	1	2	3	1+2	1+3
	Wi-Fi 6E (Main ANT)	Wi-Fi 6E (Aux ANT)	Bluetooth (Main ANT)	1g SAR Summation (W/kg)	1g SAR Summation (W/kg)
Body	0.366	0.253	0.03	0.619	0.283

Note:

The maximum SAR of Bluetooth refers to the SAR report BTL-FCC SAR-1-2111C140 R00.

15 Measurement Uncertainty

The component of uncertainty may generally be categorized according to the methods used to evaluate them. The evaluation of uncertainty by the statistical analysis of a series of observations is termed a Type A evaluation of uncertainty. The evaluation of uncertainty by means other than the statistical analysis of a series of observation is termed a Type B evaluation of uncertainty. Each component of uncertainty, however evaluated, is represented by an estimated standard deviation, termed standard uncertainty, which is determined by the positive square root of the estimated variance.

A Type A evaluation of standard uncertainty may be based on any valid statistical method for treating data. This includes calculating the standard deviation of the mean of a series of independent observations; using the method of least squares to fit a curve to the data in order to estimate the parameter of the curve and their standard deviations; or carrying out an analysis of variance in order to identify and quantify random effects in certain kinds of measurement.

A Type B evaluation of standard uncertainty is typically based on scientific judgment using all of the relevant information available. These may include previous measurement data, experience, and knowledge of the behavior and properties of relevant materials and instruments, manufacture's specification, data provided in calibration reports and uncertainties assigned to reference data taken from handbooks. Broadly speaking, the uncertainty is either obtained from an outdoor source or obtained from an assumed distribution, such as the normal distribution, rectangular or triangular distributions indicated in below Table.

Uncertainty Distributions	Normal	Rectangular	Triangular	U-Shape
Multi-plying Factor	$1/k(b)$	$1/\sqrt{3}$	$1/\sqrt{6}$	$1/\sqrt{2}$

Standard Uncertainty for Assumed Distribution

The combined standard uncertainty of the measurement result represents the estimated standard deviation of the result. It is obtained by combining the individual standard uncertainties of both Type A and Type B evaluation using the usual "root-sum-squares" (RSS) methods of combining standard deviations by taking the positive square root of the estimated variances.

Expanded uncertainty is a measure of uncertainty that defines an interval about the measurement result within which the measured value is confidently believed to lie. It is obtained by multiplying the combined standard uncertainty by a coverage factor. Typically, the coverage factor ranges from 2 to 3. Using a coverage factor allows the true value of a measured quantity to be specified with a defined probability within the specified uncertainty range. For purpose of this document, a coverage factor two is used, which corresponds to confidence interval of about 95 %. The SATIMO uncertainty Budget is shown in the following tables.



DASY6 Uncertainty Budget (Frequency Range: 4MHz ~ 10GHz)							
Uncertainty Component	Uncertainty Value (±%)	Probability	Div.	Ci (1g)	Ci (10g)	Standard Uncertainty (1g) (±%)	Standard Uncertainty (10g) (±%)
Measurement System							
Probe calibration	18.6	N	2	1	1	9.3	9.3
Probe calibration Drift	1.0	N	1	1	1	1.0	1.0
Probe Linearity	4.7	R	$\sqrt{3}$	1	1	2.7	2.7
Broadband Signal	3.0	N	1	1	1	3.0	3.0
Probe Isotropy	7.6	R	1	1	1	3.8	3.8
Data Acquisition	0.3	N	$\sqrt{3}$	1	1	0.2	0.2
RF Ambient	1.8	N	1	1	1	1.8	1.8
Probe positioning	0.2	N	1	0.33	0.33	0.1	0.1
Data Processing	3.5	N	1	1	1	3.5	3.5
Phantom and Device Errors							
Conductivity (meas.) DAK	2.5	N	1	0.78	0.71	2.0	1.8
Conductivity (temp.) BB	5.4	R	$\sqrt{3}$	0.78	0.71	2.4	2.1
Phantom Permittivity	14.0	R	$\sqrt{3}$	0.5	0.5	4.0	4.0
Distance DUT - TSL	2.0	N	1	2	2	4.0	4.0
Device Holder	3.6	N	1	1	1	3.6	3.6
DUT Modulation	2.4	R	$\sqrt{3}$	1	1	1.4	1.4
Time-average SAR	2.6	R	$\sqrt{3}$	1	1	1.5	1.5
DUT Drift	5.0	N	1	1	1	5.0	5.0
Correction to the SAR Results							
deviation from target value	1.9	N	1	1	0.84	1.9	1.6
SAR Scaling	0.0	R	$\sqrt{3}$	1	1	0.0	0.0
Combined Standard Uncertainty						14.9%	14.8%
Coverage Factor for 95%						K=2	K=2
Expanded Standard Uncertainty						29.8%	29.6%

SAR Uncertainty Budget for Frequency Range 4MHz – 10GHz



16 Measurement Conclusion

The SAR evaluation indicates that the EUT complies with the RF radiation exposure limits of FCC, with respect to all parameters subject to this test. These measurements were taken to simulate the RF effects of RF exposure under worst-case conditions. Precise laboratory measures were taken to assure repeatability of the tests. The results and statements relate only to the item(s) tested. Please note that the absorption and distribution of electromagnetic energy in the body are very complex phenomena that depend on the mass, shape, and size of the body, the orientation of the body with respect to the field vectors, and the electrical properties of both the body and the environment. Other variables that may play a substantial role in possible biological effects are those that characterize the environment (e.g. ambient temperature, air velocity, relative humidity, and body insulation) and those that characterize the individual (e.g. age, gender, activity level, debilitation, or disease). Because various factors may interact with one another to vary the specific biological outcome of an exposure to electromagnetic fields, any protection guide should consider maximal amplification of biological effects as a result of field-body interactions, environmental conditions, and physiological variables.



Annex A General Information

1. Identification of the Responsible Testing Laboratory

Laboratory Name:	Shenzhen Morlab Communications Technology Co., Ltd.
Laboratory Address:	FL.1-3, Building A, FeiYang Science Park, No.8 LongChang Road, Block 67, BaoAn District, ShenZhen, GuangDong Province, P. R. China
Telephone:	+86 755 36698555
Facsimile:	+86 755 36698525

2. Identification of the Responsible Testing Location

Name:	Shenzhen Morlab Communications Technology Co., Ltd.
Address:	FL.1-3, Building A, FeiYang Science Park, No.8 LongChang Road, Block 67, BaoAn District, ShenZhen, GuangDong Province, P. R. China

3. Facilities and Accreditations

The FCC designation number is CN1192, the test firm registration number is 226174.

Note:

The main report is end here and the other Annex (B,C,D,E,F) will be submitted separately.

***** END OF MAIN REPORT *****