



REPORT No.: SZ21110429S01

Annex D Plots of Maximum SAR Test Results

Laboratory Name: Morlab
 U-NII-5_802.11ax-HE160 MCS 0_Bottom Surface_Ch15_Main ANT

Device Under Test Properties

Model, Manufacturer	Dimensions [mm]	IMEI	DUT Type
Device,	354.0 x 235.0 x 15.0		Tablet

Exposure Conditions

Phantom Section, TSL	Position, Test Distance [mm]	Band	Group, UID	Frequency [MHz], Channel Number	Conversion Factor	TSL Conductivity [S/m]	TSL Permittivity
Flat, -	BACK, 0.00	U-NII-5	WLAN, 10743-AAC	6025.0, 15	5.5	6.00	34.7

Hardware Setup

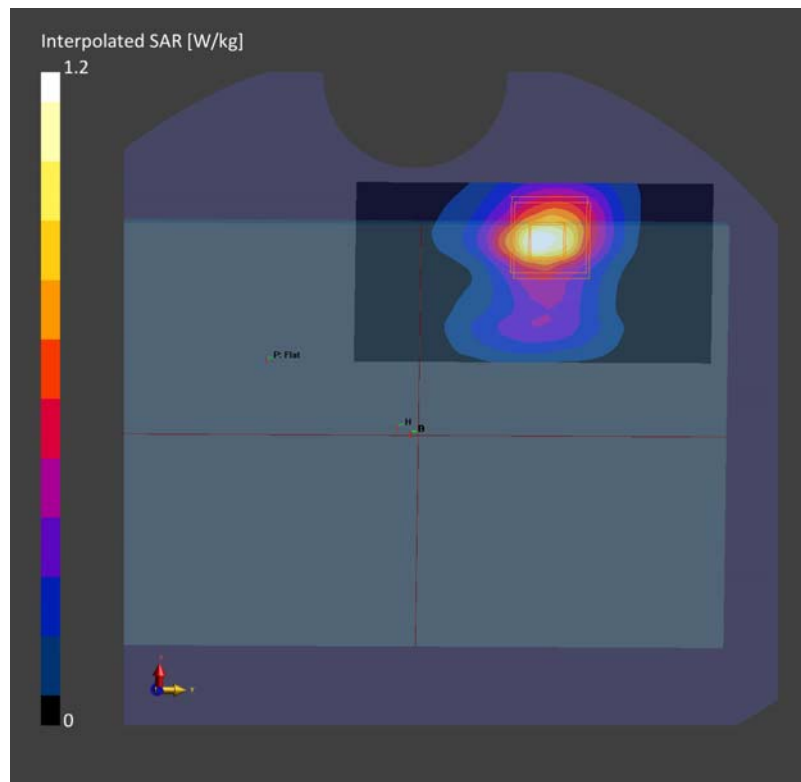
Phantom	TSL, Measured Date	Probe, Calibration Date	DAE, Calibration Date
Twin-SAM V8.0 (30deg probe tilt) - xxxx	HBBL-600-10000 Charge:xxxx, 2021-Aug-09	EX3DV4 - SN7628, 2021-02-16	DAE4 Sn1353, 2021-10-19

Scans Setup

	Area Scan	Zoom Scan
Grid Extents [mm]	51.0 x 102.0	22.0 x 22.0 x 22.0
Grid Steps [mm]	8.5 x 8.5	3.4 x 3.4 x 1.4
Sensor Surface [mm]	3.0	1.4

Measurement Results

	Area Scan	Zoom Scan
Date	2021-12-29, 18:57	2021-12-29, 19:07
psSAR1g [W/Kg]	0.263	0.294
psSAR10g [W/Kg]	0.090	0.099
Power Drift [dB]	0.07	0.02



LaboratoryName: Morlab
 U-NII-6_802.11ax-HE160 MCS 0_Bottom Surface_Ch111_Main ANT

Device Under Test Properties

Model, Manufacturer	Dimensions [mm]	IMEI	DUT Type
Device,	354.0 x 235 x 15.0		Tablet

Exposure Conditions

Phantom Section, TSL	Position, Test Distance [mm]	Band	Group, UID	Frequency [MHz], Channel Number	Conversion Factor	TSL Conductivity [S/m]	TSL Permittivity
Flat, -	BACK, 0.00	U-NII-6	WLAN, 10743-AAC	6505.0, 111	5.5	6.00	34.7

Hardware Setup

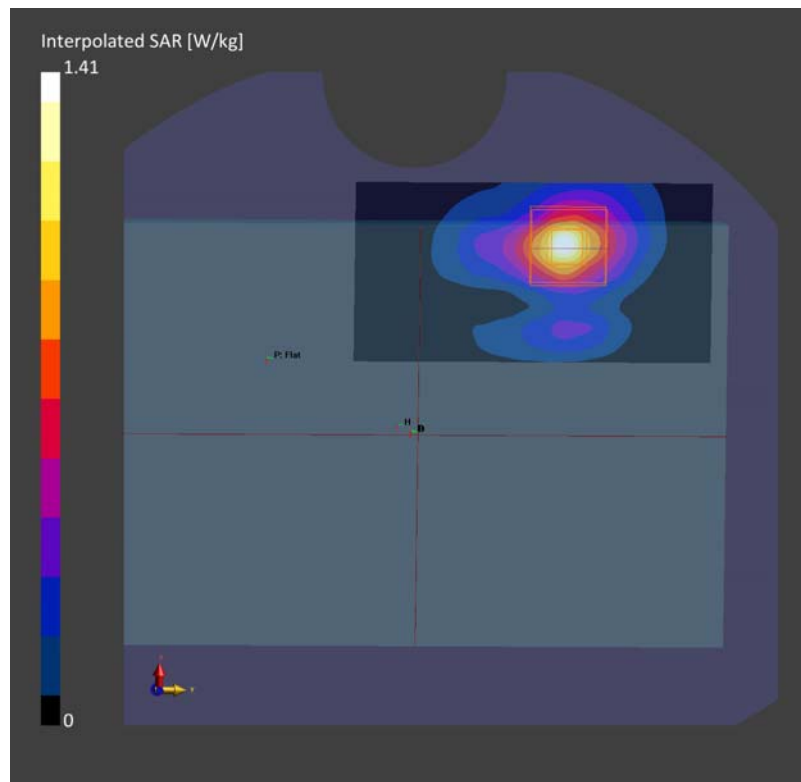
Phantom	TSL, Measured Date	Probe, Calibration Date	DAE, Calibration Date
Twin-SAM V8.0 (30deg probe tilt) - xxxx	HBBL-600-10000 Charge:xxxx, 2021-Aug-09	EX3DV4 - SN7628, 2021-02-16	DAE4 Sn1353, 2021-10-19

Scans Setup

	Area Scan	Zoom Scan
Grid Extents [mm]	51.0 x 102.0	22.0 x 22.0 x 22.0
Grid Steps [mm]	8.5 x 8.5	3.4 x 3.4 x 1.4
Sensor Surface [mm]	3.0	1.4

Measurement Results

	Area Scan	Zoom Scan
Date	2021-12-29, 16:03	2021-12-29, 16:13
psSAR1g [W/Kg]	0.305	0.317
psSAR10g [W/Kg]	0.100	0.102
Power Drift [dB]	0.03	-0.14



Laboratory Name: Morlab
 U-NII-7_802.11ax-HE160 MCS 0_Bottom Surface_Ch175_Main ANT

Device Under Test Properties

Model, Manufacturer	Dimensions [mm]	IMEI	DUT Type
Device,	354.0 x 235 x 15.0		Tablet

Exposure Conditions

Phantom Section, TSL	Position, Test Distance [mm]	Band	Group, UID	Frequency [MHz], Channel Number	Conversion Factor	TSL Conductivity [S/m]	TSL Permittivity
Flat, -	BACK, 0.00	U-NII-7	WLAN, 10743-AAC	6825.0, 175	5.5	6.00	34.7

Hardware Setup

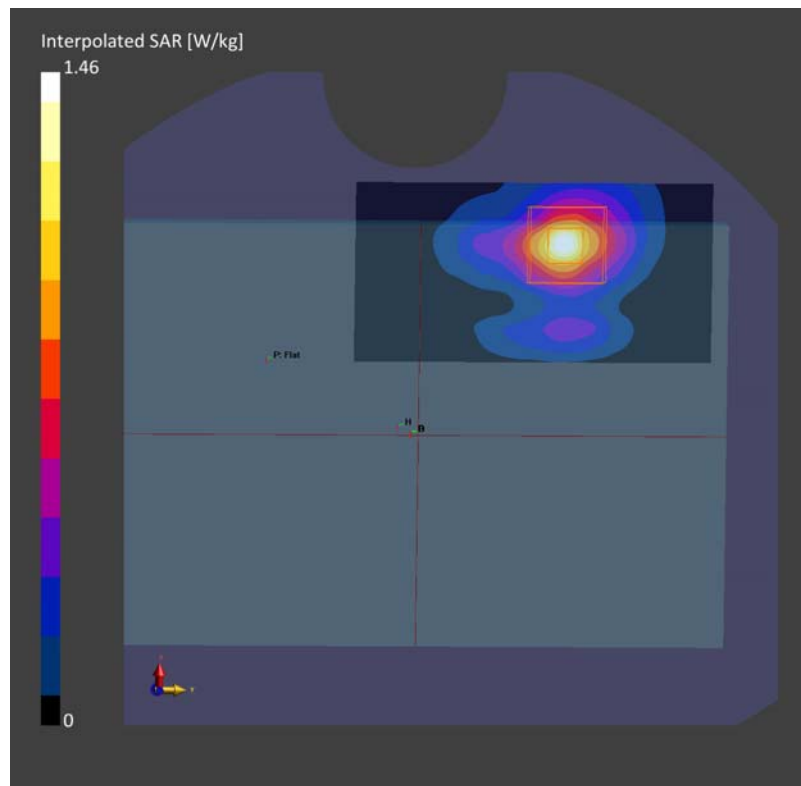
Phantom	TSL, Measured Date	Probe, Calibration Date	DAE, Calibration Date
Twin-SAM V8.0 (30deg probe tilt) - xxxx	HBBL-600-10000 Charge:xxxx, 2021-Aug-09	EX3DV4 - SN7628, 2021-02-16	DAE4 Sn1353, 2021-10-19

Scans Setup

	Area Scan	Zoom Scan
Grid Extents [mm]	51.0 x 102.0	22.0 x 22.0 x 22.0
Grid Steps [mm]	8.5 x 8.5	3.4 x 3.4 x 1.4
Sensor Surface [mm]	3.0	1.4

Measurement Results

	Area Scan	Zoom Scan
Date	2021-12-29, 17:52	2021-12-29, 18:02
psSAR1g [W/Kg]	0.326	0.326
psSAR10g [W/Kg]	0.107	0.105
Power Drift [dB]	0.09	-0.09



Laboratory Name: Morlab
 U-NII-8_802.11ax-HE160 MCS 0_Bottom Surface_Ch207_Main ANT

Device Under Test Properties

Model, Manufacturer	Dimensions [mm]	IMEI	DUT Type
Device,	354.0 x 235.0 x 15.0		Tablet

Exposure Conditions

Phantom Section, TSL	Position, Test Distance [mm]	Band	Group, UID	Frequency [MHz], Channel Number	Conversion Factor	TSL Conductivity [S/m]	TSL Permittivity
Flat, -	BACK, 0.00	U-NII-8	WLAN, 10743-AAC	6985.0, 207	5.6	6.00	34.7

Hardware Setup

Phantom	TSL, Measured Date	Probe, Calibration Date	DAE, Calibration Date
Twin-SAM V8.0 (30deg probe tilt) - xxxx	HBBL-600-10000 Charge:xxxx, 2021-Aug-09	EX3DV4 - SN7628, 2021-02-16	DAE4 Sn1353, 2021-10-19

Scans Setup

	Area Scan	Zoom Scan
Grid Extents [mm]	51.0 x 102.0	22.0 x 22.0 x 22.0
Grid Steps [mm]	8.5 x 8.5	3.4 x 3.4 x 1.4
Sensor Surface [mm]	3.0	1.4

Measurement Results

	Area Scan	Zoom Scan
Date	2021-12-29, 18:32	2021-12-29, 18:42
psSAR1g [W/Kg]	0.284	0.286
psSAR10g [W/Kg]	0.092	0.090
Power Drift [dB]	7.74	n/a

