



REPORT No.: SZ21120084S01

## Annex D Plots of Maximum SAR Test Results

Laboratory Name: Morlab Grop  
 U-NII-5\_802.11ax-HE160 MCS 0\_Bottom Surface\_Ch47\_Main ANT

**Device Under Test Properties**

Model, Manufacturer	Dimensions [mm]	IMEI	DUT Type
Device,	354.0 x 235.0 x 20.0		Tablet

**Exposure Conditions**

Phantom Section	Position, Test Distance [mm]	Band	Group, UID	Frequency [MHz], Channel Number	Conversion Factor
5G	BACK, 2.00	U-NII-5	WLAN, 10743-AAC	6185.0, 47	1.0

**Hardware Setup**

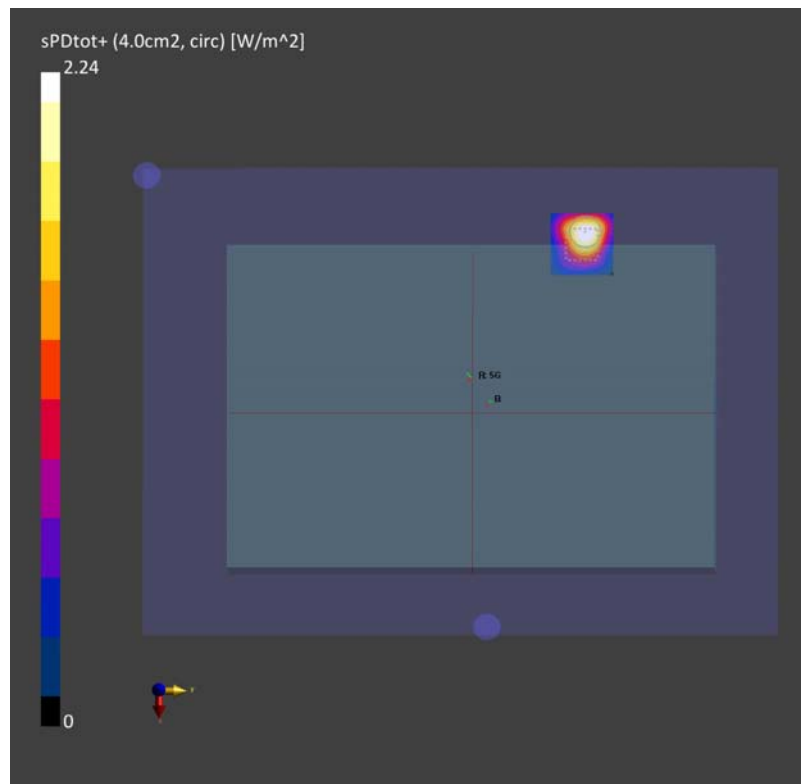
Phantom	Medium	Probe, Calibration Date	DAE, Calibration Date
mmWave - xxxx	Air -	EUmmWV4 - SN9602_F1-55GHz, 2021-11-02	DAE4 Sn1353, 2021-10-19

**Scans Setup**

Scan Type	5G Scan
Grid Extents [mm]	25.0 x 25.0
Grid Steps [lambda]	0.0625 x 0.0625
Sensor Surface [mm]	2.0
MAIA	N/A

**Measurement Results**

Scan Type	5G Scan
Date	2022-01-06, 20:07
Avg. Area [cm <sup>2</sup> ]	4.00
psPDtot+ [W/m <sup>2</sup> ]	2.24
psPDmod+ [W/m <sup>2</sup> ]	2.45
E <sub>max</sub> [V/m]	44.5



Laboratory Name: Morlab Grop  
 U-NII-6\_802.11ax-HE160 MCS 0\_Bottom Surface\_Ch47\_Aux ANT

**Device Under Test Properties**

Model, Manufacturer	Dimensions [mm]	IMEI	DUT Type
Device,	354.0 x 235.0 x 20.0		Tablet

**Exposure Conditions**

Phantom Section	Position, Test Distance [mm]	Band	Group, UID	Frequency [MHz], Channel Number	Conversion Factor
5G	BACK, 2.00	U-NII-6	WLAN, 10743-AAC	6505.0, 111	1.0

**Hardware Setup**

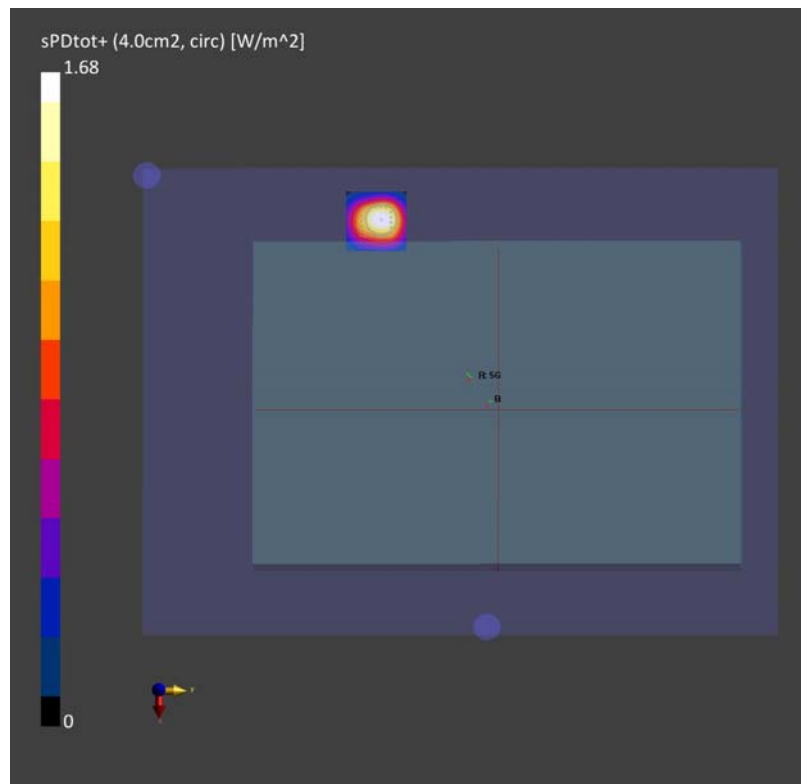
Phantom	Medium	Probe, Calibration Date	DAE, Calibration Date
mmWave - xxxx	Air -	EUmmWV4 - SN9602_F1-55GHz, 2021-11-02	DAE4 Sn1353, 2020-10-19

**Scans Setup**

Scan Type	5G Scan
Grid Extents [mm]	25.0 x 25.0
Grid Steps [lambda]	0.0625 x 0.0625
Sensor Surface [mm]	2.0
MAIA	N/A

**Measurement Results**

Scan Type	5G Scan
Date	2022-01-06, 13:00
Avg. Area [cm <sup>2</sup> ]	4.00
psPDtot+ [W/m <sup>2</sup> ]	1.67
psPDmod+ [W/m <sup>2</sup> ]	1.75
E <sub>max</sub> [V/m]	34.4



Laboratory Name: Morlab Grop  
 U-NII-7\_802.11ax-HE160 MCS 0\_Bottom Surface\_Ch143\_Main ANT

**Device Under Test Properties**

Model, Manufacturer	Dimensions [mm]	IMEI	DUT Type
Device,	354.0 x 235.0 x 20.0		Tablet

**Exposure Conditions**

Phantom Section	Position, Test Distance [mm]	Band	Group, UID	Frequency [MHz], Channel Number	Conversion Factor
5G	BACK, 2.00	U-NII-7	WLAN, 10743-AAC	6665.0, 143	1.0

**Hardware Setup**

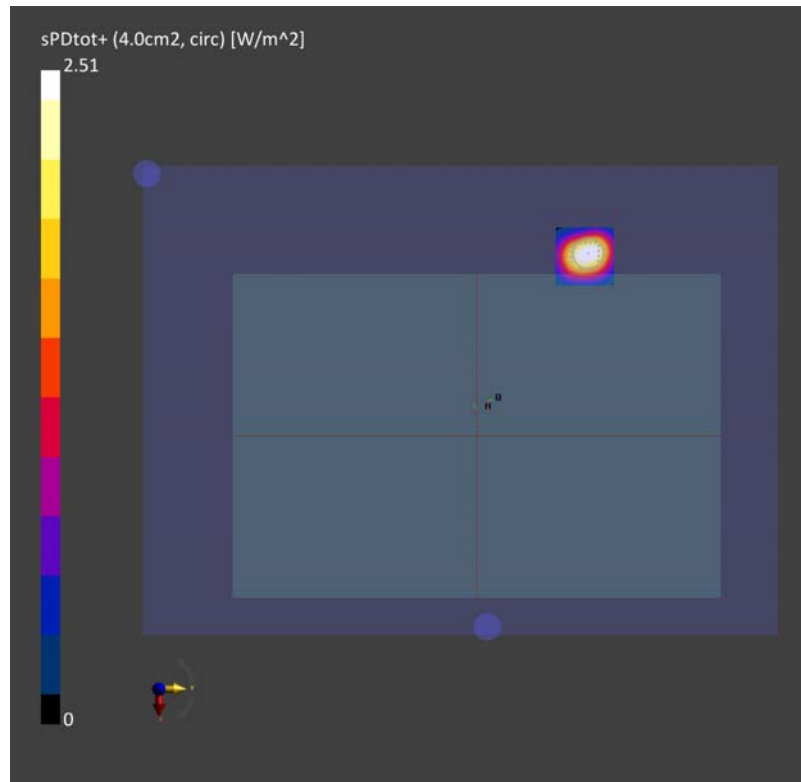
Phantom	Medium	Probe, Calibration Date	DAE, Calibration Date
mmWave - xxxx	Air -	EUmmWV4 - SN9602_F1-55GHz, 2021-11-02	DAE4 Sn1353, 2021-10-19

**Scans Setup**

Scan Type	5G Scan
Grid Extents [mm]	25.0 x 25.0
Grid Steps [lambda]	0.0625 x 0.0625
Sensor Surface [mm]	2.0
MAIA	N/A

**Measurement Results**

Scan Type	5G Scan
Date	2022-01-06, 21:46
Avg. Area [cm <sup>2</sup> ]	4.00
psPDtot+ [W/m <sup>2</sup> ]	2.51
psPDmod+ [W/m <sup>2</sup> ]	2.60
E <sub>max</sub> [V/m]	42.8



Laboratory Name: Morlab Grop  
 U-NII-8\_802.11ax-HE160 MCS 0\_Bottom Surface\_Ch207\_Main ANT

### Device Under Test Properties

Model, Manufacturer	Dimensions [mm]	IMEI	DUT Type
Device,	354.0 x 235.0 x 20.0		Tablet

### Exposure Conditions

Phantom Section	Position, Test Distance [mm]	Band	Group, UID	Frequency [MHz], Channel Number	Conversion Factor
5G	BACK, 2.00	U-NII-8	WLAN, 10743-AAC	6985.0, 207	1.0

### Hardware Setup

Phantom	Medium	Probe, Calibration Date	DAE, Calibration Date
mmWave - xxxx	Air -	EUmmWV4 - SN9602_F1-55GHz, 2021-11-02	DAE4 Sn1353, 2021-10-19

### Scans Setup

Scan Type	5G Scan
Grid Extents [mm]	25.0 x 25.0
Grid Steps [lambda]	0.0625 x 0.0625
Sensor Surface [mm]	2.0
MAIA	N/A

### Measurement Results

Scan Type	5G Scan
Date	2022-01-06, 10:43
Avg. Area [cm <sup>2</sup> ]	4.00
psPDtot+ [W/m <sup>2</sup> ]	2.47
psPDmod+ [W/m <sup>2</sup> ]	2.64
E <sub>max</sub> [V/m]	43.3

