



REPORT No.: SZ21080013S01

Annex D Plots of Maximum SAR Test Results

LaboratoryName: Morlab

WLAN U-NII-5_802.11ax-HE160 MCS0_Bottom Surface_0mm_Ch47_MAIN ANT

Device Under Test Properties

Model, Manufacturer	Dimensions [mm]	IMEI	DUT Type
Device,	176.0 x 120.0 x 15.0		Tablet

Exposure Conditions

Phantom Section, TSL	Position, Test Distance [mm]	Band	Group, UID	Frequency [MHz], Channel Number	Conversion Factor	TSL Conductivity [S/m]	TSL Permittivity
Flat, -	BACK, 0.00	U-NII-5 Standalone	WLAN, 10456-AAC	6185.0, 47	5.78	5.62	35.23

Hardware Setup

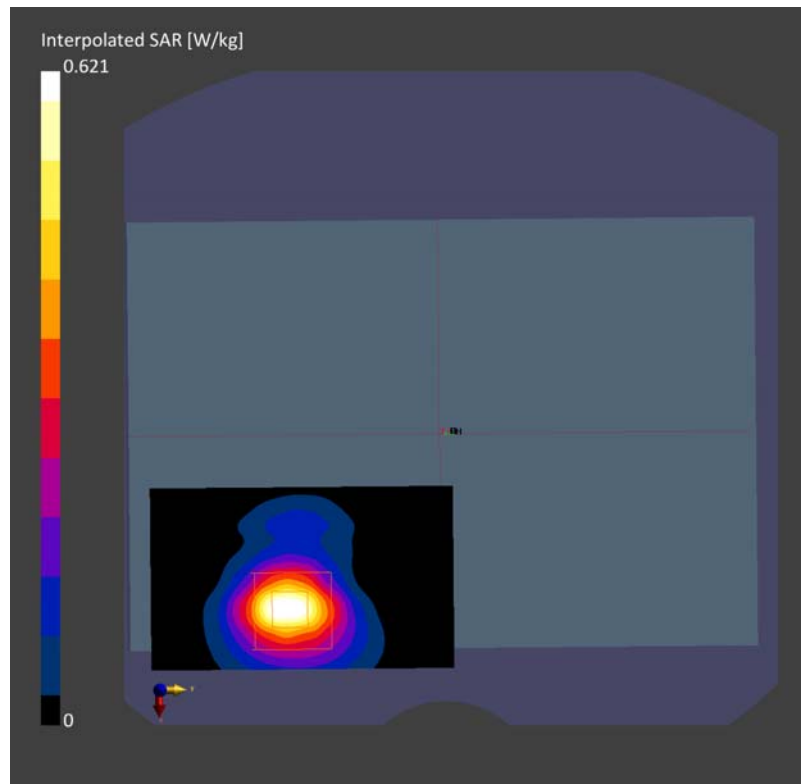
Phantom	TSL, Measured Date	Probe, Calibration Date	DAE, Calibration Date
Twin-SAM V8.0 (30deg probe tilt) - xxxx	HBBL-600-10000 Charge:xxxx, 2021-Aug-09	EX3DV4 - SN7608, 2020-11-27	DAE4 Sn1643, 2020-11-30

Scans Setup

	Area Scan	Zoom Scan
Grid Extents [mm]	51.0 x 85.0	22.0 x 22.0 x 22.0
Grid Steps [mm]	8.5 x 8.5	3.4 x 3.4 x 1.4
Sensor Surface [mm]	3.0	1.4

Measurement Results

	Area Scan	Zoom Scan
Date	2021-08-07, 10:19	2021-08-07, 10:30
psSAR1g [W/Kg]	0.459	0.489
psSAR10g [W/Kg]	0.154	0.158
Power Drift [dB]	0.17	0.03



LaboratoryName: Morlab

WLAN U-NII-5_802.11ax-HE160 MCS0_Bottom Surface_0mm_Ch47_AUX ANT

Device Under Test Properties

Model, Manufacturer	Dimensions [mm]	IMEI	DUT Type
Device,	176.0 x 120.0 x 15.0		Tablet

Exposure Conditions

Phantom Section, TSL	Position, Test Distance [mm]	Band	Group, UID	Frequency [MHz], Channel Number	Conversion Factor	TSL Conductivity [S/m]	TSL Permittivity
Flat, -	BACK, 0.00	U-NII-5 Standalone	WLAN, 10456-AAC	6185.0, 47	5.78	5.62	35.23

Hardware Setup

Phantom	TSL, Measured Date	Probe, Calibration Date	DAE, Calibration Date
Twin-SAM V8.0 (30deg probe tilt) - xxxx	HBBL-600-10000 Charge:xxxx, 2021-Aug-09	EX3DV4 - SN7608, 2020-11-27	DAE4 Sn1643, 2020-11-30

Scans Setup

	Area Scan	Zoom Scan
Grid Extents [mm]	51.0 x 85.0	22.0 x 22.0 x 22.0
Grid Steps [mm]	8.5 x 8.5	3.4 x 3.4 x 1.4
Sensor Surface [mm]	3.0	1.4

Measurement Results

	Area Scan	Zoom Scan
Date	2021-08-07, 16:20	2021-08-07, 16:31
psSAR1g [W/Kg]	0.330	0.339
psSAR10g [W/Kg]	0.111	0.110
Power Drift [dB]	0.16	-0.11

