



REPORT No.: SZ21070313S01

Annex D Plots of Maximum SAR Test Results

Laboratory Name: Morlab Grop

U-NII-5_802.11ax-HE160_MCS 0_Bottom Surface_Channel 15_MAIN ANT

Device Under Test Properties

Model, Manufacturer	Dimensions [mm]	IMEI	DUT Type
Device,	396.0 x 260.0 x 18.0		Laptop

Exposure Conditions

Phantom Section	Position, Test Distance [mm]	Band	Group, UID	Frequency [MHz], Channel Number	Conversion Factor
5G	BACK, 5.00	Custom Band	CW, 10743-AAC	6025.0, 6025000	1.0

Hardware Setup

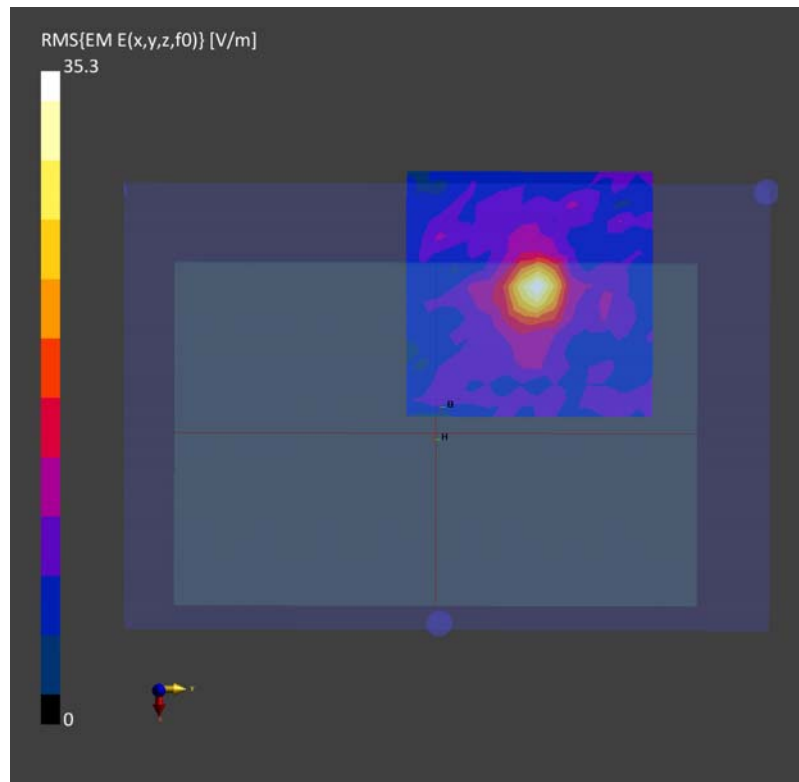
Phantom	Medium	Probe, Calibration Date	DAE, Calibration Date
mmWave - xxxx	Air -	EUmmWV4 - SN9512_F1-78GHz, 2020-12-02	DAE4 Sn1643, 2020-11-30

Scans Setup

Scan Type	5G Scan
Grid Extents [mm]	25.0 x 25.0
Grid Steps [lambda]	0.25 x 0.25
Sensor Surface [mm]	5.0
MAIA	N/A

Measurement Results

Scan Type	5G Scan
Date	2021-08-17, 14:06
Avg. Area [cm ²]	4.00
psPDtot+ [W/m ²]	1.88
psPDmod+ [W/m ²]	1.91
E _{max} [V/m]	35.3



Laboratory Name: Morlab Grop

U-NII-5_802.11ax-HE160_MCS 0_Bottom Surface_Channel 47_AUX ANT

Device Under Test Properties

Model, Manufacturer	Dimensions [mm]	IMEI	DUT Type
Device,	396.0 x 260.0 x 18.0		Laptop

Exposure Conditions

Phantom Section	Position, Test Distance [mm]	Band	Group, UID	Frequency [MHz], Channel Number	Conversion Factor
5G	BACK, 2.00	Custom Band	CW, 10743-AAC	6185.0, 47	1.0

Hardware Setup

Phantom	Medium	Probe, Calibration Date	DAE, Calibration Date
mmWave - xxxx	Air -	EUmmWV4 - SN9512_F1-78GHz, 2020-12-02	DAE4 Sn1643, 2020-11-30

Scans Setup

Scan Type	5G Scan
Grid Extents [mm]	25.0 x 25.0
Grid Steps [lambda]	0.25 x 0.25
Sensor Surface [mm]	2.0
MAIA	N/A

Measurement Results

Scan Type	5G Scan
Date	2021-08-17, 14:49
Avg. Area [cm ²]	4.00
psPDtot+ [W/m ²]	1.10
psPDmod+ [W/m ²]	1.21
E _{max} [V/m]	28.9

