



REPORT No.: SZ21070329S01

Annex D Plots of Maximum SAR Test Results

Test Lab.:Morlab laboratory

WLAN U-NII-6_802.11ax-HE160 MCS0_Bottom Surface_0mm_Ch111_MAIN ANT

Device Under Test Properties

Model, Manufacturer	Dimensions [mm]	IMEI	DUT Type
Device,	350.0 x 235.0 x18.0		Laptop

Exposure Conditions

Phantom Section, TSL	Position, Test Distance [mm]	Band	Group, UID	Frequency [MHz], Channel Number	Conversion Factor	TSL Conductivity [S/m]	TSL Permittivity
Flat, HSL	BACK, 2.00	U-NII-6 Standalone	WLAN, 10456-AAB	6505.0, 111	5.78	5.76	33.7

Hardware Setup

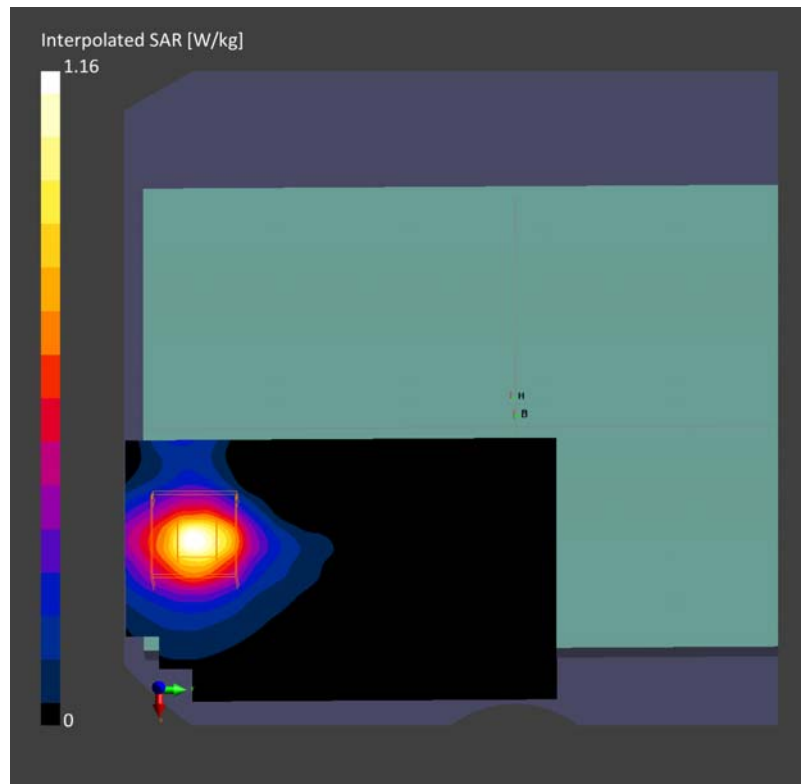
Phantom	TSL, Measured Date	Probe, Calibration Date	DAE, Calibration Date
Twin-SAM V8.0 (30deg probe tilt) - 2020	HBBL-600-10000 Charge:xxxx, --	EX3DV4 - SN7608, 2020-11-27	DAE4 Sn1643, 2020-11-30

Scans Setup

	Area Scan	Zoom Scan
Grid Extents [mm]	68.0 x 102.0	22.0 x 22.0 x 22.0
Grid Steps [mm]	8.5 x 8.5	3.4 x 3.4 x 1.4
Sensor Surface [mm]	3.0	1.4

Measurement Results

	Area Scan	Zoom Scan
Date	2021-08-05, 19:40	2021-08-05, 19:51
psSAR1g [W/Kg]	0.47	0.486
psSAR10g [W/Kg]	0.14	0.148
Power Drift [dB]	-0.01	-0.03



Test Lab.:Morlab laboratory

WLAN U-NII-7_802.11ax-HE160 MCS0_Bottom Surface_0mm_Ch143_AUX ANT

Device Under Test Properties

Model, Manufacturer	Dimensions [mm]	IMEI	DUT Type
Device,	350.0 x 236.0 x 18.0		Laptop

Exposure Conditions

Phantom Section, TSL	Position, Test Distance [mm]	Band	Group, UID	Frequency [MHz], Channel Number	Conversion Factor	TSL Conductivity [S/m]	TSL Permittivity
Flat, HSL	BACK, 0.00	U-NII-7 Standalone	WLAN, 10456-AAB	6665.0, 143	5.78	5.56	34.2

Hardware Setup

Phantom	TSL, Measured Date	Probe, Calibration Date	DAE, Calibration Date
Twin-SAM V8.0 (30deg probe tilt) - 2020	HBBL-600-10000 Charge:xxxx, --	EX3DV4 - SN7608, 2020-11-27	DAE4 Sn1643, 2020-11-30

Scans Setup

	Area Scan	Zoom Scan
Grid Extents [mm]	68.0 x 204.0	22.0 x 22.0 x 22.0
Grid Steps [mm]	8.5 x 8.5	3.4 x 3.4 x 1.4
Sensor Surface [mm]	3.0	1.4

Measurement Results

	Area Scan	Zoom Scan
Date	2021-08-05, 20:27	2021-08-05, 20:38
psSAR1g [W/Kg]	0.32	0.323
psSAR10g [W/Kg]	0.097	0.104
Power Drift [dB]	0.24	0.05

