



REPORT No.: SZ21060015S01

Annex D Plots of Maximum SAR Test Results

Test Lab.:Morlab laboratory

U-NII-5_802.11ax-HE160 MCS 0_Bottom Face_Channel 47_AUX ANT

Device Under Test Properties

Name, Manufacturer	Dimensions [mm]	IMEI	DUT Type
Device,	350.0 x 230.0 x 10.0		Laptop

Exposure Conditions

Phantom Section	Position, Test Distance [mm]	Band	Group, UID	Frequency [MHz], Channel Number	Conversion Factor
5G	BACK, 2.00	Custom Band	CW, 10743-AAA	6185.0, 6185000	1.0

Hardware Setup

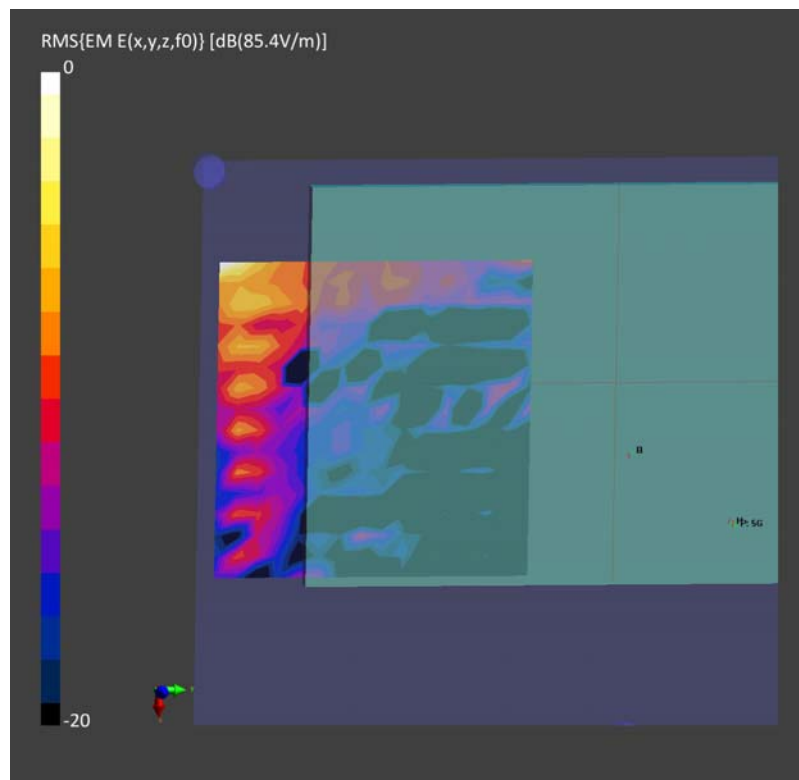
Phantom	Medium	Probe, Calibration Date	DAE, Calibration Date
mmWave - xxxx	Air -	EUmmWV4 - SN9512_F1-78GHz, 2020-12-02	DAE4 Sn1643, 2020-11-30

Scans Setup

Scan Type	5G Scan
Grid Extents [mm]	25.0 x 25.0
Grid Steps [lambda]	0.0625 x 0.0625
Sensor Surface [mm]	2.0
MAIA	N/A

Measurement Results

Scan Type	5G Scan
Date	2021-06-19, 10:46
Avg. Area [cm ²]	4.00
pS _{tot} avg [W/m ²]	4.59
pS _n avg [W/m ²]	3.94
E _{peak} [V/m]	85.4



Test Lab.:Morlab laboratory

U-NII-6_802.11ax-HE160 MCS 0_Bottom Face_Channel 111_AUX ANT

Device Under Test Properties

Name, Manufacturer	Dimensions [mm]	IMEI	DUT Type
Device,	350.0 x 230.0 x 10.0		Laptop

Exposure Conditions

Phantom Section	Position, Test Distance [mm]	Band	Group, UID	Frequency [MHz], Channel Number	Conversion Factor
5G	BACK, 2.00	Custom Band	CW, 10743-AAA	6665.0, 6665000	1.0

Hardware Setup

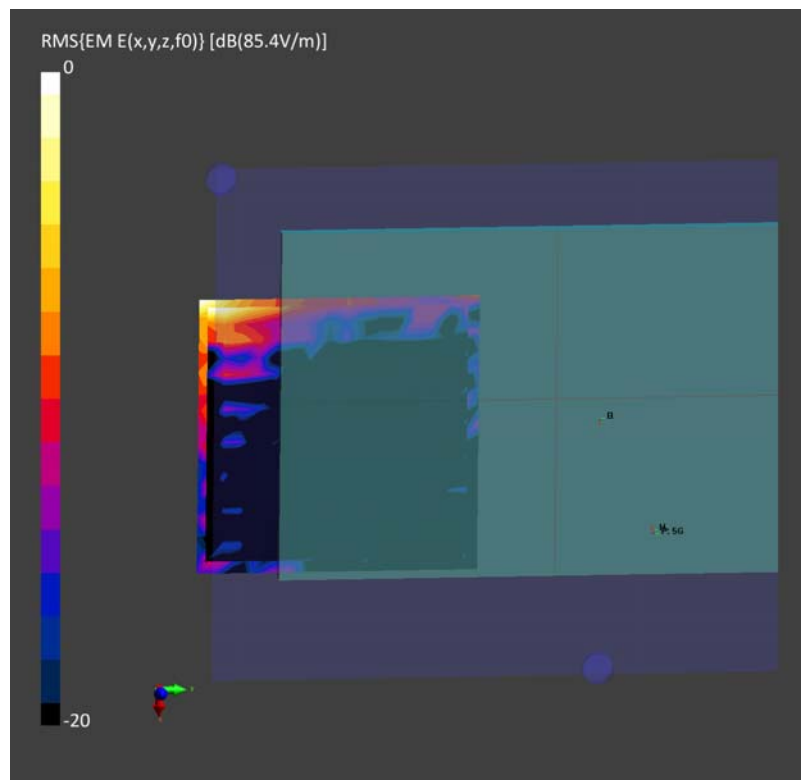
Phantom	Medium	Probe, Calibration Date	DAE, Calibration Date
mmWave - xxxx	Air -	EUmmWV4 - SN9512_F1-78GHz, 2020-12-02	DAE4 Sn1643, 2020-11-30

Scans Setup

Scan Type	5G Scan
Grid Extents [mm]	25.0 x 25.0
Grid Steps [lambda]	0.0625 x 0.0625
Sensor Surface [mm]	2.0
MAIA	N/A

Measurement Results

Scan Type	5G Scan
Date	2021-06-19, 13:48
Avg. Area [cm ²]	4.00
pS _{tot} avg [W/m ²]	3.64
pS _n avg [W/m ²]	3.53
E _{peak} [V/m]	80.9



Test Lab.:Morlab laboratory

U-NII-7_802.11ax-HE160 MCS 0_Bottom Face_Channel 143_MAIN ANT

Device Under Test Properties

Name, Manufacturer	Dimensions [mm]	IMEI	DUT Type
Device,	350.0 x 230.0 x 10.0		Laptop

Exposure Conditions

Phantom Section	Position, Test Distance [mm]	Band	Group, UID	Frequency [MHz], Channel Number	Conversion Factor
5G	BACK, 2.00	Custom Band	CW, 10743-AAA	6825.0, 6825000	1.0

Hardware Setup

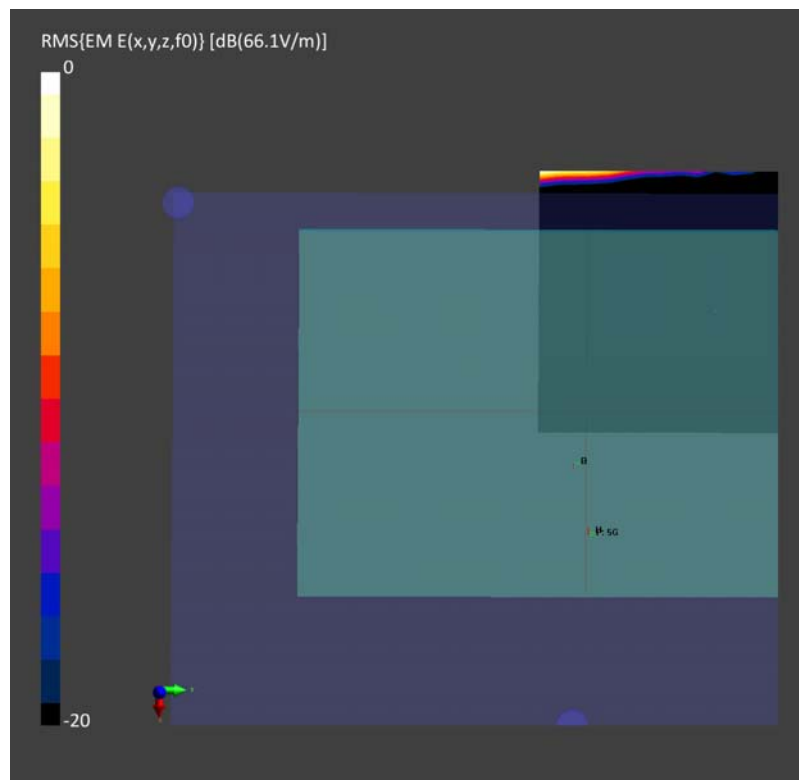
Phantom	Medium	Probe, Calibration Date	DAE, Calibration Date
mmWave - xxxx	Air -	EUmmWV4 - SN9512_F1-78GHz, 2020-12-02	DAE4 Sn1643, 2020-11-30

Scans Setup

Scan Type	5G Scan
Grid Extents [mm]	25.0 x 25.0
Grid Steps [lambda]	0.0625 x 0.0625
Sensor Surface [mm]	2.0
MAIA	N/A

Measurement Results

Scan Type	5G Scan
Date	2021-06-19, 16:53
Avg. Area [cm ²]	4.00
pS _{tot} avg [W/m ²]	1.540
pS _n avg [W/m ²]	1.346
E _{peak} [V/m]	66.1



Test Lab.:Morlab laboratory

U-NII-8_802.11ax-HE160 MCS 0_Bottom Face_Channel 207_MAIN ANT

Device Under Test Properties

Name, Manufacturer	Dimensions [mm]	IMEI	DUT Type
Device,	350.0 x 230.0 x 10.0		Laptop

Exposure Conditions

Phantom Section	Position, Test Distance [mm]	Band	Group, UID	Frequency [MHz], Channel Number	Conversion Factor
5G	BACK, 2.00	Custom Band	CW, 10743-AAA	6985.0, 6985000	1.0

Hardware Setup

Phantom	Medium	Probe, Calibration Date	DAE, Calibration Date
mmWave - xxxx	Air -	EUmmWV4 - SN9512_F1-78GHz, 2020-12-02	DAE4 Sn1643, 2020-11-30

Scans Setup

Scan Type	5G Scan
Grid Extents [mm]	25.0 x 25.0
Grid Steps [lambda]	0.0625 x 0.0625
Sensor Surface [mm]	2.0
MAIA	N/A

Measurement Results

Scan Type	5G Scan
Date	2021-06-19, 18:11
Avg. Area [cm ²]	1.00
pS _{tot} avg [W/m ²]	0.559
pS _n avg [W/m ²]	0.176
E _{peak} [V/m]	59.6

