



REPORT No.: SZ21070330S01

## Annex D Plots of Maximum SAR Test Results

Laboratory Name: Morlab

WLAN U-NII-6\_802.11ax-HE160 MCS0\_Bottom Surface\_0mm\_Ch111\_MAIN ANT

Device Under Test Properties

Model, Manufacturer	Dimensions [mm]	IMEI	DUT Type
Device,	356.0 x 260.0 x 18.0		Laptop

Exposure Conditions

Phantom Section, TSL	Position, Test Distance [mm]	Band	Group, UID	Frequency [MHz], Channel Number	Conversion Factor	TSL Conductivity [S/m]	TSL Permittivity
Flat, -	BACK, 0.00	U-NII-6 Standalone	WLAN, 10456-AAC	6505.0, 111	5.78	5.76	33.7

Hardware Setup

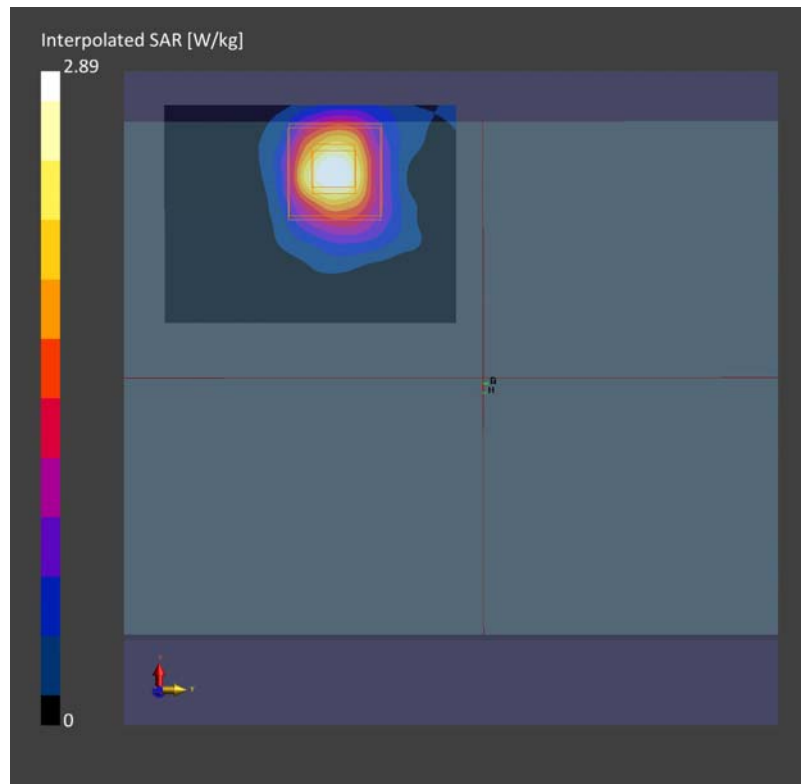
Phantom	TSL, Measured Date	Probe, Calibration Date	DAE, Calibration Date
Twin-SAM V8.0 (30deg probe tilt) - xxxx	HBBL-600-10000 Charge:xxxx, 2021-Aug-10	EX3DV4 - SN7608, 2020-11-27	DAE4 Sn1643, 2020-11-30

Scans Setup

	Area Scan	Zoom Scan
Grid Extents [mm]	51.0 x 68.0	22.0 x 22.0 x 22.0
Grid Steps [mm]	5.0 x 5.0	3.4 x 3.4 x 1.4
Sensor Surface [mm]	3.0	1.4

Measurement Results

	Area Scan	Zoom Scan
Date	2021-08-05, 19:03	2021-08-05, 19:13
psSAR1g [W/Kg]	0.316	0.329
psSAR10g [W/Kg]	0.111	0.116
Power Drift [dB]	0.13	-0.01



Laboratory Name: Morlab

WLAN U-NII-6\_802.11ax-HE160 MCS0\_Bottom Surface\_0mm\_Ch111\_AUX ANT

Device Under Test Properties

Model, Manufacturer	Dimensions [mm]	IMEI	DUT Type
Device,	356.0 x 120.0 x 18.0		Laptop

Exposure Conditions

Phantom Section, TSL	Position, Test Distance [mm]	Band	Group, UID	Frequency [MHz], Channel Number	Conversion Factor	TSL Conductivity [S/m]	TSL Permittivity
Flat, -	BACK, 0.00	U-NII-6 Standalone	WLAN, 10456-AAC	6505.0, 111	5.78	5.76	33.7

Hardware Setup

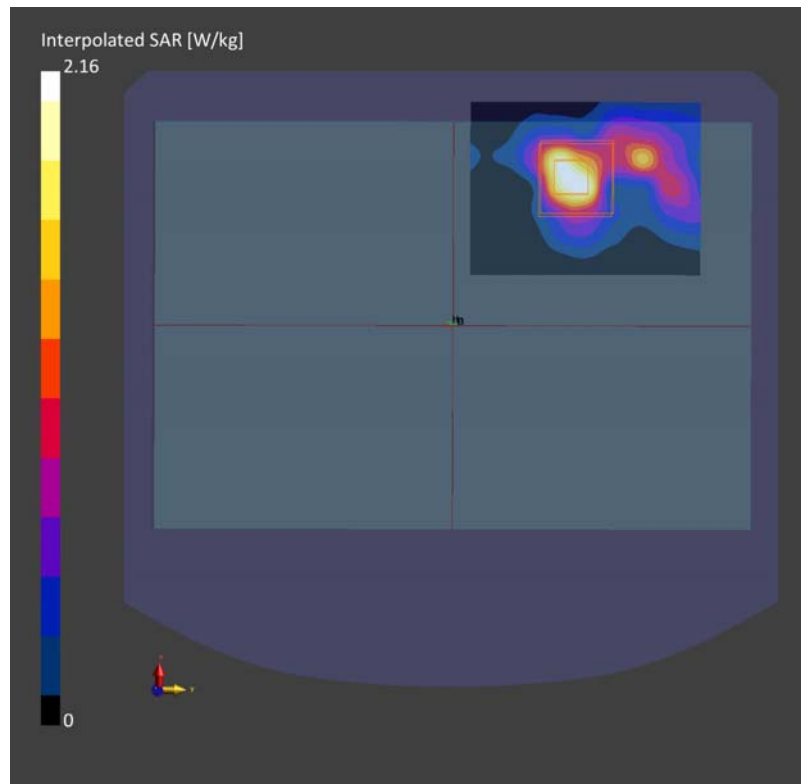
Phantom	TSL, Measured Date	Probe, Calibration Date	DAE, Calibration Date
Twin-SAM V8.0 (30deg probe tilt) - xxxx	HBBL-600-10000 Charge:xxxx, 2021-Aug-09	EX3DV4 - SN7608, 2020-11-27	DAE4 Sn1643, 2020-11-30

Scans Setup

	Area Scan	Zoom Scan
Grid Extents [mm]	51.0 x 68.0	22.0 x 22.0 x 22.0
Grid Steps [mm]	5.0 x 5.0	4.0 x 4.0 x 1.4
Sensor Surface [mm]	3.0	1.4

Measurement Results

	Area Scan	Zoom Scan
Date	2021-08-05, 21:57	2021-08-05,21:06
psSAR1g [W/Kg]	0.279	0.298
psSAR10g [W/Kg]	0.097	0.104
Power Drift [dB]	0.11	-0.04



Laboratory Name: Morlab

WLAN U-NII-7\_802.11ax-HE160 MCS0\_Bottom Surface\_0mm\_Ch143\_MAIN ANT(Ant. A)

### Device Under Test Properties

Model, Manufacturer	Dimensions [mm]	IMEI	DUT Type
Device,	356.0 x 260.0 x 18.0		Laptop

### Exposure Conditions

Phantom Section, TSL	Position, Test Distance [mm]	Band	Group, UID	Frequency [MHz], Channel Number	Conversion Factor	TSL Conductivity [S/m]	TSL Permittivity
Flat, -	BACK, 0.00	U-NII-7 Standalone	WLAN, 10456-AAC	6665.0, 143	5.78	5.56	34.2

### Hardware Setup

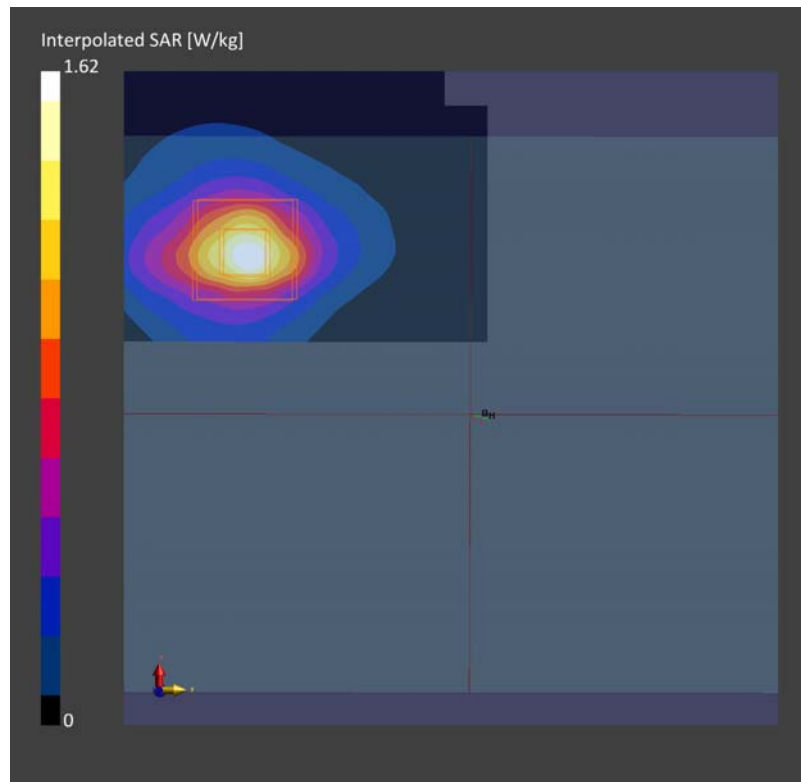
Phantom	TSL, Measured Date	Probe, Calibration Date	DAE, Calibration Date
Twin-SAM V8.0 (30deg probe tilt) - xxxx	HBBL-600-10000 Charge:xxxx, --	EX3DV4 - SN7608, 2020-11-27	DAE4 Sn1643, 2020-11-30

### Scans Setup

	Area Scan	Zoom Scan
Grid Extents [mm]	51.0 x 85.0	22.0 x 22.0 x 22.0
Grid Steps [mm]	5.0 x 5.0	3.4 x 3.4 x 1.4
Sensor Surface [mm]	3.0	1.4

### Measurement Results

	Area Scan	Zoom Scan
Date	2021-08-05, 09:33	2021-08-05, 09:43
psSAR1g [W/Kg]	0.362	0.399
psSAR10g [W/Kg]	0.126	0.133
Power Drift [dB]	0.16	0.04



Laboratory Name: Morlab

WLAN U-NII-8\_802.11ax-HE160 MCS0\_Bottom Surface\_0mm\_Ch207\_AUX ANT(Ant. B)

### Device Under Test Properties

Model, Manufacturer	Dimensions [mm]	IMEI	DUT Type
Device,	356.0 x 230.0 x 18.0		Taplop

### Exposure Conditions

Phantom Section, TSL	Position, Test Distance [mm]	Band	Group, UID	Frequency [MHz], Channel Number	Conversion Factor	TSL Conductivity [S/m]	TSL Permittivity
Flat, -	BACK, 0.00	U-NII-8 Standalone	WLAN, 10456-AAC	6985.0, 165	4.78	5.26	35.2

### Hardware Setup

Phantom	TSL, Measured Date	Probe, Calibration Date	DAE, Calibration Date
Twin-SAM V8.0 (30deg probe tilt) - xxxx	HBBL-600-10000 Charge:xxxx, --	EX3DV4 - SN7608, 2020-11-27	DAE4 Sn1643, 2020-11-30

### Scans Setup

	Area Scan	Zoom Scan
Grid Extents [mm]	51.0 x 85.0	22.0 x 22.0 x 22.0
Grid Steps [mm]	8.5 x 8.5	3.4 x 3.4 x 1.4
Sensor Surface [mm]	3.0	1.4

### Measurement Results

	Area Scan	Zoom Scan
Date	2021-08-05, 10:02	2021-08-05, 10:13
psSAR1g [W/Kg]	0.303	0.364
psSAR10g [W/Kg]	0.091	0.117
Power Drift [dB]	2.23	-0.12

