

T01_802.11b_CH11_Back of Keyboard_0cm_ANT A

DUT: Notebook;

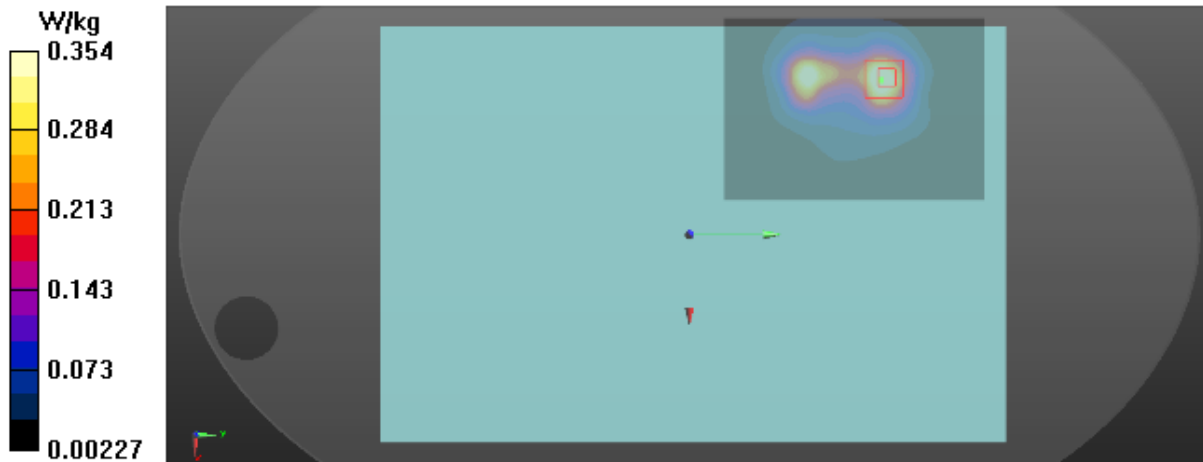
Communication System: UID 0, 802.11b (0); Frequency: 2462 MHz; Duty Cycle: 1:1
Medium parameters used: $f = 2462$ MHz; $\sigma = 1.998$ S/m; $\epsilon_r = 53.218$; $\rho = 1000$ kg/m³
Ambient Temperature : 23.4 °C; Liquid Temperature : 22.3 °C

DASY Configuration:

- Probe: EX3DV4 - SN7396; ConvF(7.7, 7.7, 7.7) @ 2462 MHz; Calibrated: 2018-05-29
- Sensor-Surface: 4mm (Mechanical Surface Detection), $z = 1.0, 31.0$
- Electronics: DAE3 Sn420; Calibrated: 2018-03-22
- Phantom: ELI v5.0; Type: QDOVA002AA; Serial: TP:1222
- DASY52 52.10.2(1495); SEMCAD X 14.6.12(7450)

Area Scan (10x13x1): Interpolated grid: $dx=12$ mm, $dy=12$ mm
Maximum value of SAR (interpolated) = 0.404 W/kg

Zoom Scan (7x7x7)/Cube 0: Measurement grid: $dx=5$ mm, $dy=5$ mm, $dz=5$ mm
Reference Value = 0.5310 V/m; Power Drift = 0.09 dB
Peak SAR (extrapolated) = 0.694 W/kg
SAR(1 g) = 0.331 W/kg; SAR(10 g) = 0.160 W/kg
Maximum value of SAR (measured) = 0.354 W/kg



T06_802.11b_CH11_Back of Keyboard_0cm_ANT B

DUT: Notebook;

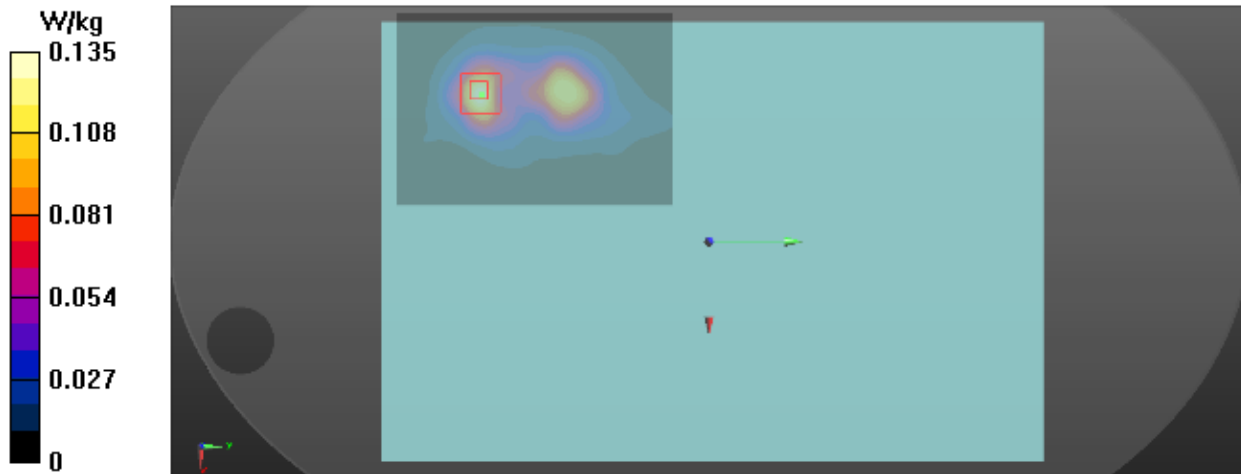
Communication System: UID 0, 802.11b (0); Frequency: 2462 MHz; Duty Cycle: 1:1
Medium parameters used: $f = 2462$ MHz; $\sigma = 1.998$ S/m; $\epsilon_r = 53.218$; $\rho = 1000$ kg/m³
Ambient Temperature : 23.4 °C; Liquid Temperature : 22.3 °C

DASY Configuration:

- Probe: EX3DV4 - SN7396; ConvF(7.7, 7.7, 7.7) @ 2462 MHz; Calibrated: 2018-05-29
- Sensor-Surface: 4mm (Mechanical Surface Detection), $z = 1.0, 31.0$
- Electronics: DAE3 Sn420; Calibrated: 2018-03-22
- Phantom: ELI v5.0; Type: QDOVA002AA; Serial: TP:1222
- DASY52 52.10.2(1495); SEMCAD X 14.6.12(7450)

Area Scan (10x13x1): Interpolated grid: $dx=12$ mm, $dy=12$ mm
Maximum value of SAR (interpolated) = 0.135 W/kg

Zoom Scan (7x7x7)/Cube 0: Measurement grid: $dx=5$ mm, $dy=5$ mm, $dz=5$ mm
Reference Value = 0.5350 V/m; Power Drift = -0.02 dB
Peak SAR (extrapolated) = 0.249 W/kg
SAR(1 g) = 0.117 W/kg; SAR(10 g) = 0.057 W/kg
Maximum value of SAR (measured) = 0.134 W/kg



T11_BT DH5_CH78_Back of Keyboard_0cm_ANT A

DUT: Notebook;

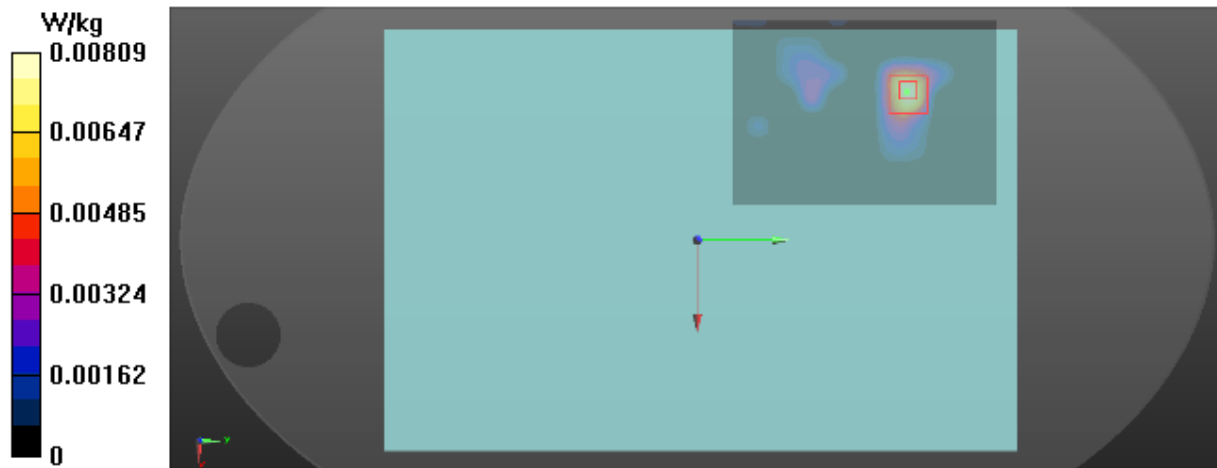
Communication System: UID 0, BT (0); Frequency: 2480 MHz; Duty Cycle: 1:1
Medium parameters used: $f = 2480$ MHz; $\sigma = 2.02$ S/m; $\epsilon_r = 53.096$; $\rho = 1000$ kg/m³
Ambient Temperature : 23.4 °C; Liquid Temperature : 22.3 °C

DASY Configuration:

- Probe: EX3DV4 - SN7396; ConvF(7.7, 7.7, 7.7) @ 2480 MHz; Calibrated: 2018-05-29
- Sensor-Surface: 4mm (Mechanical Surface Detection), $z = 1.0, 31.0$
- Electronics: DAE3 Sn420; Calibrated: 2018-03-22
- Phantom: ELI v5.0; Type: QDOVA002AA; Serial: TP:1222
- DASY52 52.10.2(1495); SEMCAD X 14.6.12(7450)

Area Scan (10x13x1): Interpolated grid: $dx=12$ mm, $dy=12$ mm
Maximum value of SAR (interpolated) = 0.00809 W/kg

Zoom Scan (7x7x7)/Cube 0: Measurement grid: $dx=5$ mm, $dy=5$ mm, $dz=5$ mm
Reference Value = 0.4660 V/m; Power Drift = 0.01 dB
Peak SAR (extrapolated) = 0.0260 W/kg
SAR(1 g) = 0.008 W/kg; SAR(10 g) = 0.003 W/kg
Maximum value of SAR (measured) = 0.00893 W/kg



T18_802.11a_CH60_Back of Keyboard_0cm_ANT A

DUT: Notebook;

Communication System: UID 0, 802.11a (0); Frequency: 5300 MHz; Duty Cycle: 1:1
Medium parameters used: $f = 5300$ MHz; $\sigma = 5.488$ S/m; $\epsilon_r = 47.447$; $\rho = 1000$ kg/m³
Ambient Temperature : 23.2 °C; Liquid Temperature : 22.5 °C

DASY Configuration:

- Probe: EX3DV4 - SN7396; ConvF(5.05, 5.05, 5.05) @ 5300 MHz; Calibrated: 2018-05-29
- Sensor-Surface: 2mm (Mechanical Surface Detection), $z = 1.0, 23.0$
- Electronics: DAE3 Sn420; Calibrated: 2018-03-22
- Phantom: ELI v5.0; Type: QDOVA002AA; Serial: TP:1222
- DASY52 52.10.2(1495); SEMCAD X 14.6.12(7450)

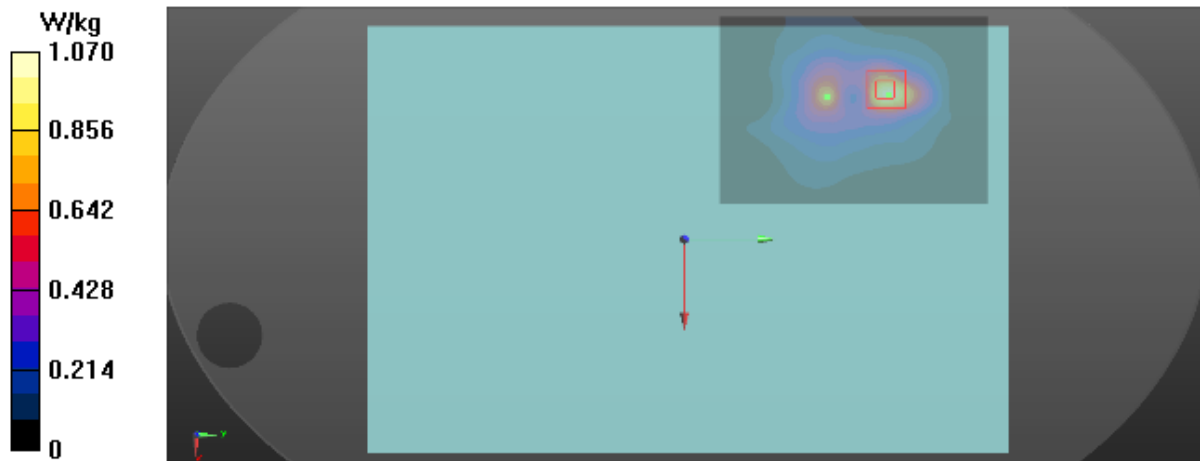
Area Scan (12x16x1): Interpolated grid: $dx=10$ mm, $dy=10$ mm
Maximum value of SAR (interpolated) = 1.03 W/kg

Zoom Scan (7x7x12)/Cube 0: Measurement grid: $dx=4$ mm, $dy=4$ mm, $dz=2$ mm
Reference Value = 0.2440 V/m; Power Drift = 0.02 dB

Peak SAR (extrapolated) = 2.43 W/kg

SAR(1 g) = 0.570 W/kg; SAR(10 g) = 0.208 W/kg

Maximum value of SAR (measured) = 1.07 W/kg



T21_802.11a_CH52_Back of Keyboard_0cm_ANT B

DUT: Notebook;

Communication System: UID 0, 802.11a (0); Frequency: 5260 MHz; Duty Cycle: 1:1
Medium parameters used: $f = 5260$ MHz; $\sigma = 5.452$ S/m; $\epsilon_r = 47.564$; $\rho = 1000$ kg/m³
Ambient Temperature : 23.2 °C; Liquid Temperature : 22.5 °C

DASY Configuration:

- Probe: EX3DV4 - SN7396; ConvF(5.05, 5.05, 5.05) @ 5260 MHz; Calibrated: 2018-05-29
- Sensor-Surface: 2mm (Mechanical Surface Detection), $z = 1.0, 23.0$
- Electronics: DAE3 Sn420; Calibrated: 2018-03-22
- Phantom: ELI v5.0; Type: QDOVA002AA; Serial: TP:1222
- DASY52 52.10.2(1495); SEMCAD X 14.6.12(7450)

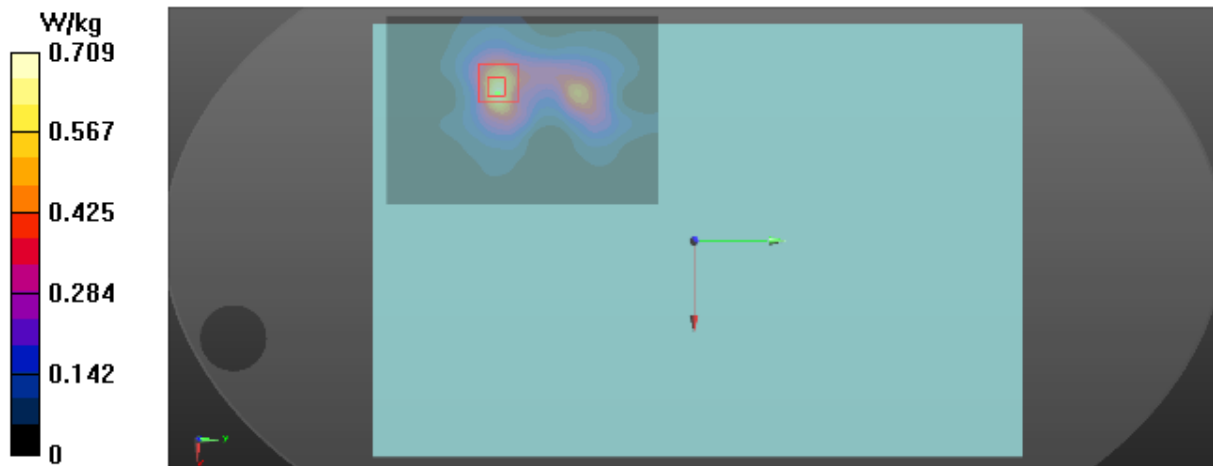
Area Scan (12x16x1): Interpolated grid: $dx=10$ mm, $dy=10$ mm
Maximum value of SAR (interpolated) = 0.692 W/kg

Zoom Scan (7x7x12)/Cube 0: Measurement grid: $dx=4$ mm, $dy=4$ mm, $dz=2$ mm
Reference Value = 0.1590 V/m; Power Drift = 0.06 dB

Peak SAR (extrapolated) = 1.75 W/kg

SAR(1 g) = 0.408 W/kg; SAR(10 g) = 0.142 W/kg

Maximum value of SAR (measured) = 0.709 W/kg



T26_802.11n40_CH126_Back of Keyboard_0cm_ANT A

DUT: Notebook;

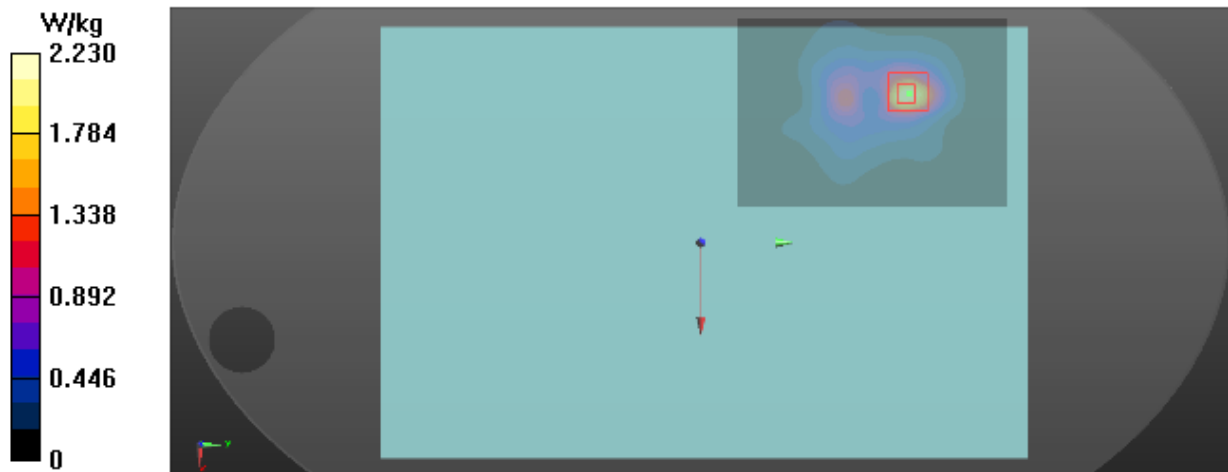
Communication System: UID 0, 802.11n (0); Frequency: 5630 MHz; Duty Cycle: 1:1
Medium parameters used: $f = 5630$ MHz; $\sigma = 5.948$ S/m; $\epsilon_r = 46.796$; $\rho = 1000$ kg/m³
Ambient Temperature : 23.2 °C; Liquid Temperature : 22.5 °C

DASY Configuration:

- Probe: EX3DV4 - SN7396; ConvF(4.38, 4.38, 4.38) @ 5630 MHz; Calibrated: 2018-05-29
- Sensor-Surface: 2mm (Mechanical Surface Detection), $z = 1.0, 23.0$
- Electronics: DAE3 Sn420; Calibrated: 2018-03-22
- Phantom: ELI v5.0; Type: QDOVA002AA; Serial: TP:1222
- DASY52 52.10.2(1495); SEMCAD X 14.6.12(7450)

Area Scan (12x16x1): Interpolated grid: $dx=10$ mm, $dy=10$ mm
Maximum value of SAR (interpolated) = 2.10 W/kg

Zoom Scan (7x7x12)/Cube 0: Measurement grid: $dx=4$ mm, $dy=4$ mm, $dz=2$ mm
Reference Value = 0 V/m; Power Drift = 0.00 dB
Peak SAR (extrapolated) = 5.49 W/kg
SAR(1 g) = 1.16 W/kg; SAR(10 g) = 0.418 W/kg
Maximum value of SAR (measured) = 2.23 W/kg



T34_802.11n40_CH134_Back of Keyboard_0cm_ANT B

DUT: Notebook;

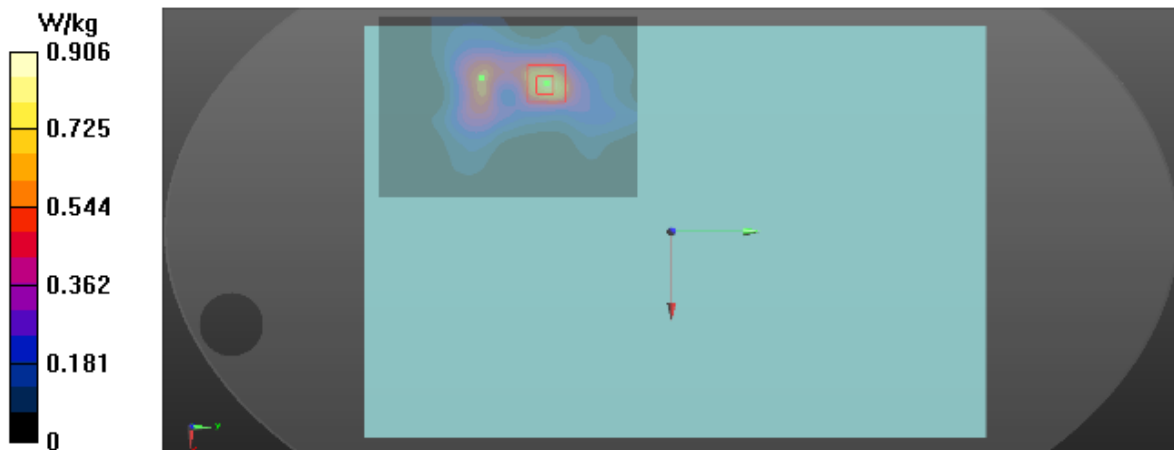
Communication System: UID 0, 802.11n (0); Frequency: 5670 MHz; Duty Cycle: 1:1
 Medium parameters used: $f = 5670$ MHz; $\sigma = 6.025$ S/m; $\epsilon_r = 46.731$; $\rho = 1000$ kg/m³
 Ambient Temperature : 23.2 °C; Liquid Temperature : 22.5 °C

DASY Configuration:

- Probe: EX3DV4 - SN7396; ConvF(4.38, 4.38, 4.38) @ 5670 MHz; Calibrated: 2018-05-29
- Sensor-Surface: 2mm (Mechanical Surface Detection), $z = 1.0, 23.0$
- Electronics: DAE3 Sn420; Calibrated: 2018-03-22
- Phantom: ELI v5.0; Type: QDOVA002AA; Serial: TP:1222
- DASY52 52.10.2(1495); SEMCAD X 14.6.12(7450)

Area Scan (12x16x1): Interpolated grid: $dx=10$ mm, $dy=10$ mm
 Maximum value of SAR (interpolated) = 0.812 W/kg

Zoom Scan (7x7x12)/Cube 0: Measurement grid: $dx=4$ mm, $dy=4$ mm, $dz=2$ mm
 Reference Value = 0.4040 V/m; Power Drift = 0.00 dB
 Peak SAR (extrapolated) = 2.22 W/kg
SAR(1 g) = 0.484 W/kg; SAR(10 g) = 0.176 W/kg
 Maximum value of SAR (measured) = 0.906 W/kg



T36_802.11n40_CH159_Back of Keyboard_0cm_ANT A

DUT: Notebook;

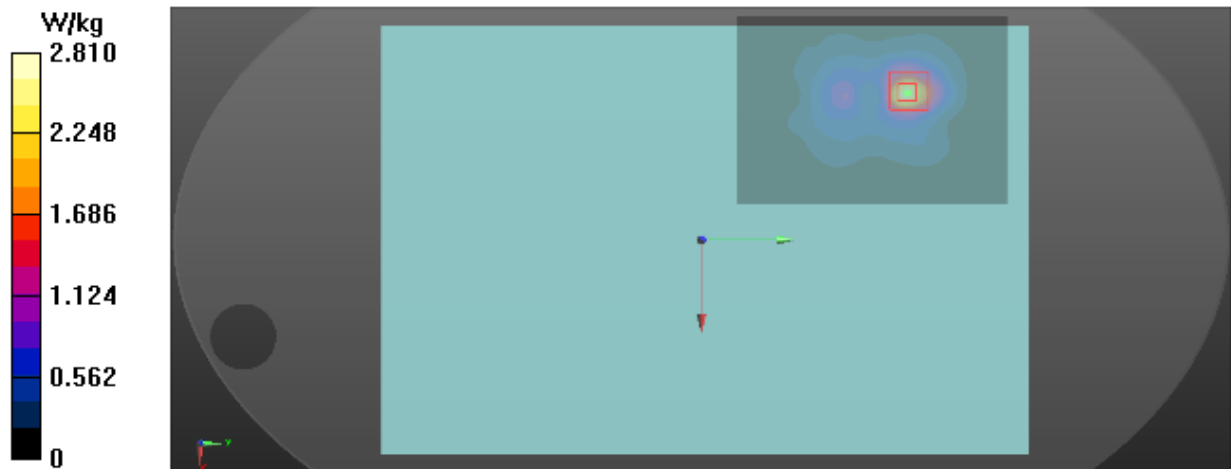
Communication System: UID 0, 802.11n (0); Frequency: 5795 MHz; Duty Cycle: 1:1
 Medium parameters used: $f = 5795$ MHz; $\sigma = 6.202$ S/m; $\epsilon_r = 46.519$; $\rho = 1000$ kg/m³
 Ambient Temperature : 23.2 °C; Liquid Temperature : 22.5 °C

DASY Configuration:

- Probe: EX3DV4 - SN7396; ConvF(4.5, 4.5, 4.5) @ 5795 MHz; Calibrated: 2018-05-29
- Sensor-Surface: 2mm (Mechanical Surface Detection), $z = 1.0, 23.0$
- Electronics: DAE3 Sn420; Calibrated: 2018-03-22
- Phantom: ELI v5.0; Type: QDOVA002AA; Serial: TP:1222
- DASY52 52.10.2(1495); SEMCAD X 14.6.12(7450)

Area Scan (12x16x1): Interpolated grid: $dx=10$ mm, $dy=10$ mm
 Maximum value of SAR (interpolated) = 2.69 W/kg

Zoom Scan (7x7x12)/Cube 0: Measurement grid: $dx=4$ mm, $dy=4$ mm, $dz=2$ mm
 Reference Value = 0.4480 V/m; Power Drift = -0.02 dB
 Peak SAR (extrapolated) = 6.89 W/kg
SAR(1 g) = 1.42 W/kg; SAR(10 g) = 0.500 W/kg
 Maximum value of SAR (measured) = 2.81 W/kg



T40_802.11n40_CH159_Back of Keyboard_0cm_ANT B

DUT: Notebook;

Communication System: UID 0, 802.11n (0); Frequency: 5795 MHz; Duty Cycle: 1:1
 Medium parameters used: $f = 5795$ MHz; $\sigma = 6.202$ S/m; $\epsilon_r = 46.519$; $\rho = 1000$ kg/m³
 Ambient Temperature : 23.2 °C; Liquid Temperature : 22.5 °C

DASY Configuration:

- Probe: EX3DV4 - SN7396; ConvF(4.5, 4.5, 4.5) @ 5795 MHz; Calibrated: 2018-05-29
- Sensor-Surface: 2mm (Mechanical Surface Detection), $z = 1.0, 23.0$
- Electronics: DAE3 Sn420; Calibrated: 2018-03-22
- Phantom: ELI v5.0; Type: QDOVA002AA; Serial: TP:1222
- DASY52 52.10.2(1495); SEMCAD X 14.6.12(7450)

Area Scan (12x16x1): Interpolated grid: $dx=10$ mm, $dy=10$ mm
 Maximum value of SAR (interpolated) = 1.62 W/kg

Zoom Scan (7x7x12)/Cube 0: Measurement grid: $dx=4$ mm, $dy=4$ mm, $dz=2$ mm
 Reference Value = 0 V/m; Power Drift = 0.00 dB
 Peak SAR (extrapolated) = 4.43 W/kg
SAR(1 g) = 0.950 W/kg; SAR(10 g) = 0.345 W/kg
 Maximum value of SAR (measured) = 1.74 W/kg

