

System Check_B2450_12-8

DUT: Dipole 2450 MHz D2450V2;SN:919;

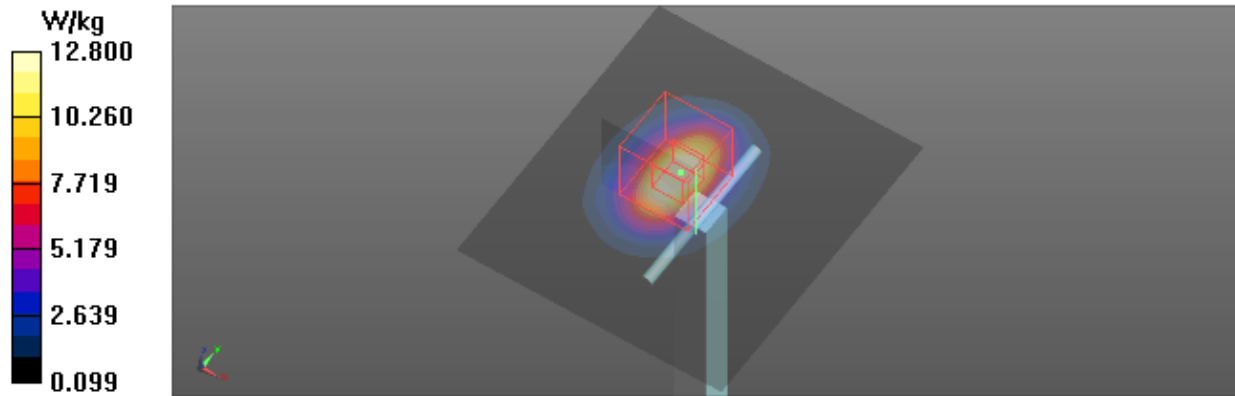
Communication System: UID 0, CW (0); Frequency: 2450 MHz; Duty Cycle: 1:1
Medium parameters used: $f = 2450$ MHz; $\sigma = 1.972$ S/m; $\epsilon_r = 53.183$; $\rho = 1000$ kg/m³
Ambient Temperature : 23.1 °C; Liquid Temperature : 22.3 °C

DASY Configuration:

- Probe: EX3DV4 - SN7396; ConvF(7.7, 7.7, 7.7); Calibrated: 2018-05-29;
- Sensor-Surface: 4mm (Mechanical Surface Detection), $z = 1.0, 31.0$
- Electronics: DAE3 Sn420; Calibrated: 2018-03-22
- Phantom: ELI v5.0; Type: QDOVA002AA; Serial: TP:1222
- DASY52 52.8.8(1258); SEMCAD X 14.6.10(7373)

Area Scan (8x9x1): Interpolated grid: $dx=12$ mm, $dy=12$ mm
Maximum value of SAR (interpolated) = 14.2 W/kg

Zoom Scan (7x7x7)/Cube 0: Measurement grid: $dx=5$ mm, $dy=5$ mm, $dz=5$ mm
Reference Value = 89.56 V/m; Power Drift = -0.09 dB
Peak SAR (extrapolated) = 21.8 W/kg
SAR(1 g) = 12.3 W/kg; SAR(10 g) = 5.72 W/kg
Maximum value of SAR (measured) = 12.8 W/kg



System Check_B5300_12-7

DUT: Dipole D5GHzV2;SN;1160;

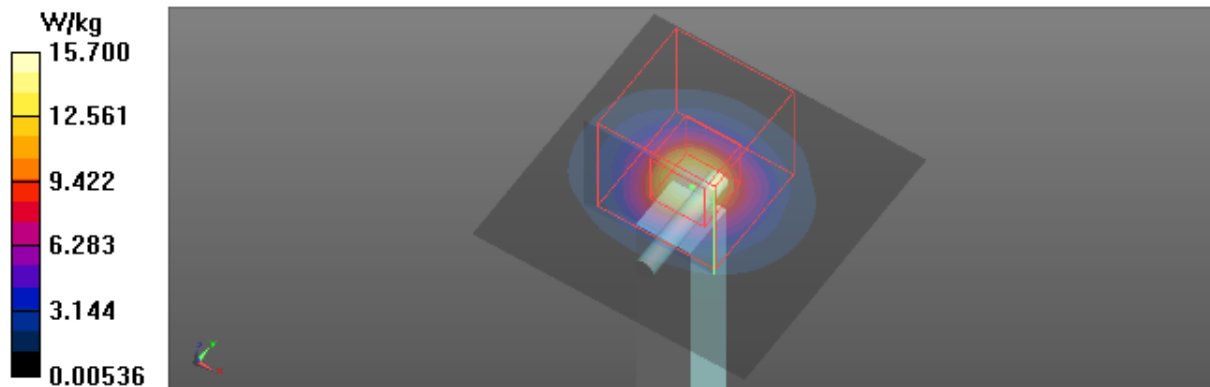
Communication System: UID 0, CW (0); Frequency: 5300 MHz; Duty Cycle: 1:1
Medium parameters used: $f = 5300$ MHz; $\sigma = 5.497$ S/m; $\epsilon_r = 47.508$; $\rho = 996$ kg/m³
Ambient Temperature : 23.3 °C; Liquid Temperature : 22.5 °C

DASY Configuration:

- Probe: EX3DV4 - SN7396; ConvF(5.05, 5.05, 5.05); Calibrated: 2018-05-29;
- Sensor-Surface: 2mm (Mechanical Surface Detection), $z = 1.0, 23.0$
- Electronics: DAE3 Sn420; Calibrated: 2018-03-22
- Phantom: ELI v5.0; Type: QDOVA002AA; Serial: TP:1222
- DASY52 52.8.8(1258); SEMCAD X 14.6.10(7373)

Area Scan (6x6x1): Interpolated grid: $dx=10$ mm, $dy=10$ mm
Maximum value of SAR (interpolated) = 15.7 W/kg

Zoom Scan (7x7x12)/Cube 0: Measurement grid: $dx=4$ mm, $dy=4$ mm, $dz=2$ mm
Reference Value = 37.49 V/m; Power Drift = -0.03 dB
Peak SAR (extrapolated) = 30.9 W/kg
SAR(1 g) = 7.5 W/kg; SAR(10 g) = 2.06 W/kg
Maximum value of SAR (measured) = 15.7 W/kg



System Check_B5500_12-7

DUT: Dipole D5GHzV2;SN;1160;

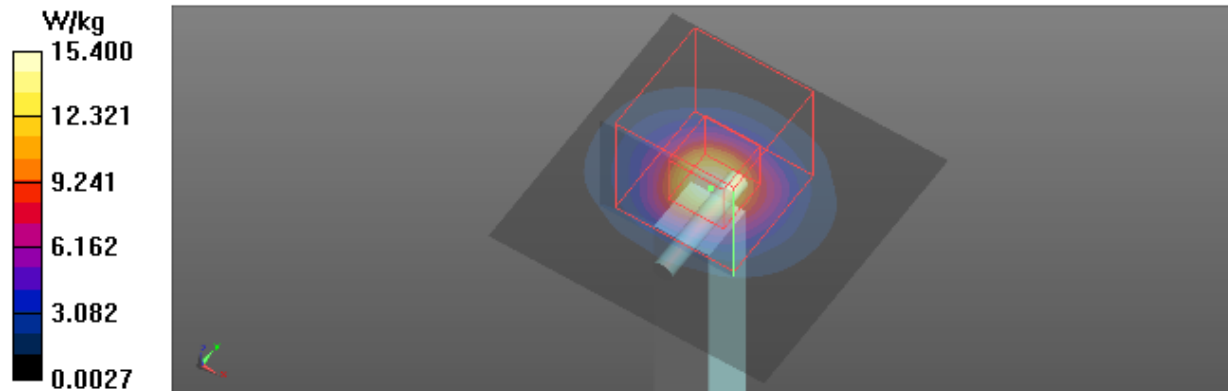
Communication System: UID 0, CW (0); Frequency: 5500 MHz; Duty Cycle: 1:1
Medium parameters used: $f = 5500$ MHz; $\sigma = 5.783$ S/m; $\epsilon_r = 47.147$; $\rho = 996$ kg/m³
Ambient Temperature : 23.3 °C; Liquid Temperature : 22.5 °C

DASY Configuration:

- Probe: EX3DV4 - SN7396; ConvF(4.38, 4.38, 4.38); Calibrated: 2018-05-29;
- Sensor-Surface: 2mm (Mechanical Surface Detection), $z = 1.0, 23.0$
- Electronics: DAE3 Sn420; Calibrated: 2018-03-22
- Phantom: ELI v5.0; Type: QDOVA002AA; Serial: TP:1222
- DASY52 52.8.8(1258); SEMCAD X 14.6.10(7373)

Area Scan (6x6x1): Interpolated grid: $dx=10$ mm, $dy=10$ mm
Maximum value of SAR (interpolated) = 15.5 W/kg

Zoom Scan (7x7x12)/Cube 0: Measurement grid: $dx=4$ mm, $dy=4$ mm, $dz=2$ mm
Reference Value = 35.52 V/m; Power Drift = -0.02 dB
Peak SAR (extrapolated) = 31.8 W/kg
SAR(1 g) = 7.3 W/kg; SAR(10 g) = 2.01 W/kg
Maximum value of SAR (measured) = 15.4 W/kg



System Check_B5600_12-7

DUT: Dipole D5GHzV2;SN;1160;

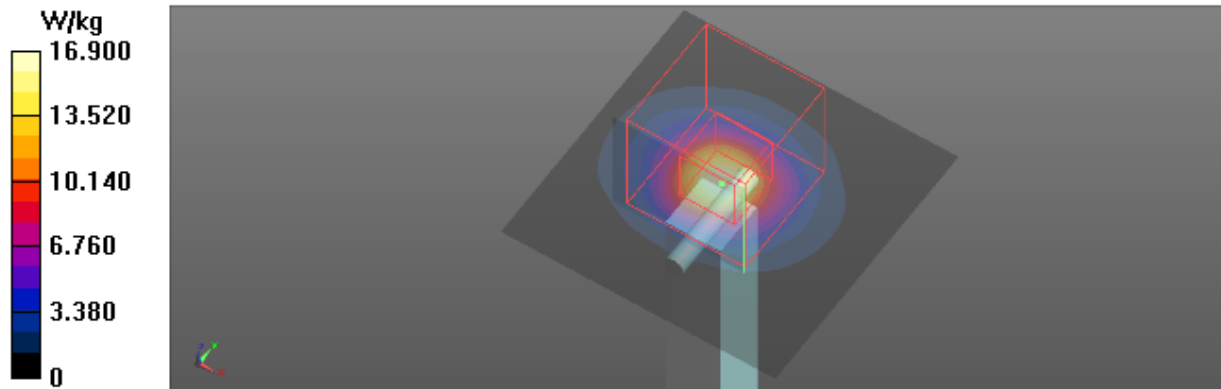
Communication System: UID 0, CW (0); Frequency: 5600 MHz; Duty Cycle: 1:1
Medium parameters used: $f = 5600$ MHz; $\sigma = 5.93$ S/m; $\epsilon_r = 46.959$; $\rho = 996$ kg/m³
Ambient Temperature : 23.3 °C; Liquid Temperature : 22.5 °C

DASY Configuration:

- Probe: EX3DV4 - SN7396; ConvF(4.38, 4.38, 4.38); Calibrated: 2018-05-29;
- Sensor-Surface: 2mm (Mechanical Surface Detection), $z = 1.0, 23.0$
- Electronics: DAE3 Sn420; Calibrated: 2018-03-22
- Phantom: ELI v5.0; Type: QDOVA002AA; Serial: TP:1222
- DASY52 52.8.8(1258); SEMCAD X 14.6.10(7373)

Area Scan (6x6x1): Interpolated grid: $dx=10$ mm, $dy=10$ mm
Maximum value of SAR (interpolated) = 17.2 W/kg

Zoom Scan (7x7x12)/Cube 0: Measurement grid: $dx=4$ mm, $dy=4$ mm, $dz=2$ mm
Reference Value = 36.44 V/m; Power Drift = -0.05 dB
Peak SAR (extrapolated) = 36.2 W/kg
SAR(1 g) = 7.93 W/kg; SAR(10 g) = 2.20 W/kg
Maximum value of SAR (measured) = 16.9 W/kg



System Check_B5800_12-7

DUT: Dipole D5GHzV2;SN;1160;

Communication System: UID 0, CW (0); Frequency: 5800 MHz; Duty Cycle: 1:1
Medium parameters used: $f = 5800$ MHz; $\sigma = 6.221$ S/m; $\epsilon_r = 46.576$; $\rho = 996$ kg/m³
Ambient Temperature : 23.3 °C; Liquid Temperature : 22.5 °C

DASY Configuration:

- Probe: EX3DV4 - SN7396; ConvF(4.5, 4.5, 4.5); Calibrated: 2018-05-29;
- Sensor-Surface: 2mm (Mechanical Surface Detection), $z = 1.0, 23.0$
- Electronics: DAE3 Sn420; Calibrated: 2018-03-22
- Phantom: ELI v5.0; Type: QDOVA002AA; Serial: TP:1222
- DASY52 52.8.8(1258); SEMCAD X 14.6.10(7373)

Area Scan (6x6x1): Interpolated grid: $dx=10$ mm, $dy=10$ mm
Maximum value of SAR (interpolated) = 17.0 W/kg

Zoom Scan (7x7x12)/Cube 0: Measurement grid: $dx=4$ mm, $dy=4$ mm, $dz=2$ mm
Reference Value = 35.63 V/m; Power Drift = -0.01 dB
Peak SAR (extrapolated) = 36.3 W/kg
SAR(1 g) = 7.92 W/kg; SAR(10 g) = 2.19 W/kg
Maximum value of SAR (measured) = 16.9 W/kg

