

Test Laboratory: Audix SAR Lab

Date: 11/07/2016

**11n20 CH36(5180MHz Bottom)**

EUT: Notebook M/N: RZ09-0196

Communication System: UID 0, IEEE 802.11n WiFi 5.2GHz (0); Communication System Band: IEEE 802.11n WiFi 5.2GHz; Frequency: 5180 MHz; Communication System PAR: 0 dB. Medium parameters used:  $f = 5180 \text{ MHz}$ ;  $\sigma = 4.896 \text{ S/m}$ ;  $\epsilon_r = 47.26$ ;  $\rho = 1000 \text{ kg/m}^3$

Phantom section: Flat Section

DASY5 Configuration:

- Probe: EX3DV4 - SN3767; ConvF(4.98, 4.98, 4.98); Calibrated: 30/01/2015;
- Modulation Compensation:
- Sensor-Surface: 4mm (Mechanical Surface Detection)
- Electronics: DAE4 Sn889; Calibrated: 02/02/2016
- Phantom: ELI 4.0; Type: QDOVA001BA; Serial: 1112
- Measurement SW: DASY52, Version 52.8 (8); SEMCAD X Version 14.6.10 (7331)

**Configuration/CH36(5180MHz Bottom)/Area Scan (51x71x1):** Interpolated grid:

$dx=2.000 \text{ mm}$ ,  $dy=2.000 \text{ mm}$

Maximum value of SAR (interpolated) = 1.14 W/kg

**Configuration/CH36(5180MHz Bottom)/Zoom Scan (5x5x7)/Cube 0:**

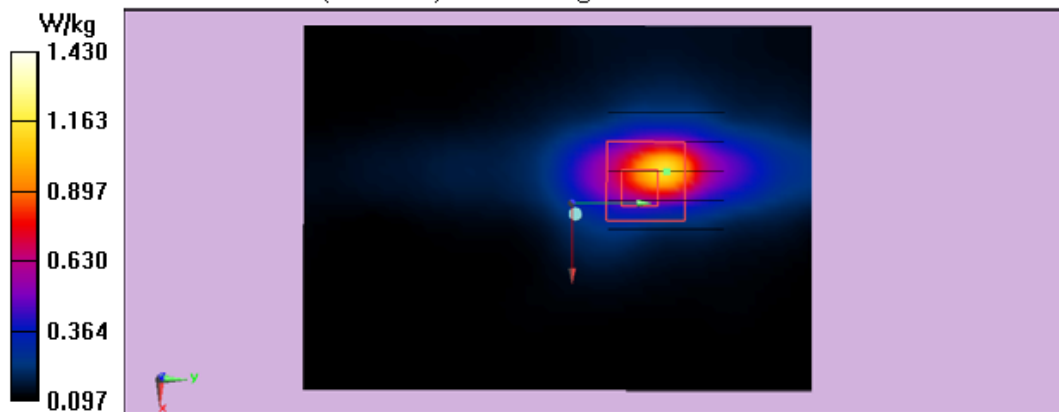
Measurement grid:  $dx=8\text{mm}$ ,  $dy=8\text{mm}$ ,  $dz=5\text{mm}$

Reference Value = 6.431 V/m; Power Drift = 0.09 dB

Peak SAR (extrapolated) = 3.43 W/kg

**SAR(1 g) = 0.618 W/kg; SAR(10 g) = 0.260 W/kg**

Maximum value of SAR (measured) = 1.43 W/kg



Test Laboratory: Audix SAR Lab

Date: 11/07/2016

**11n20 CH36(5180MHz Screen Back)**

EUT: Notebook M/N: RZ09-0196

Communication System: UID 0, IEEE 802.11n WiFi 5.2GHz (0); Communication System Band: IEEE 802.11n WiFi 5.2GHz; Frequency: 5180 MHz; Communication System PAR: 0 dB. Medium parameters used:  $f = 5180 \text{ MHz}$ ;  $\sigma = 4.896 \text{ S/m}$ ;  $\epsilon_r = 47.26$ ;  $\rho = 1000 \text{ kg/m}^3$

Phantom section: Flat Section

DASY5 Configuration:

- Probe: EX3DV4 - SN3767; ConvF(4.98, 4.98, 4.98); Calibrated: 30/01/2015;
- Modulation Compensation:
- Sensor-Surface: 4mm (Mechanical Surface Detection)
- Electronics: DAE4 Sn889; Calibrated: 02/02/2016
- Phantom: ELI 4.0; Type: QDOVA001BA; Serial: 1112
- Measurement SW: DASY52, Version 52.8 (8); SEMCAD X Version 14.6.10 (7331)

**Configuration/CH36(5180MHz Screen Back)/Area Scan (51x71x1):**

Interpolated grid:  $dx=2.000 \text{ mm}$ ,  $dy=2.000 \text{ mm}$

Maximum value of SAR (interpolated) = 0.766 W/kg

**Configuration/CH36(5180MHz Screen Back)/Zoom Scan (5x5x7)/Cube 0:**

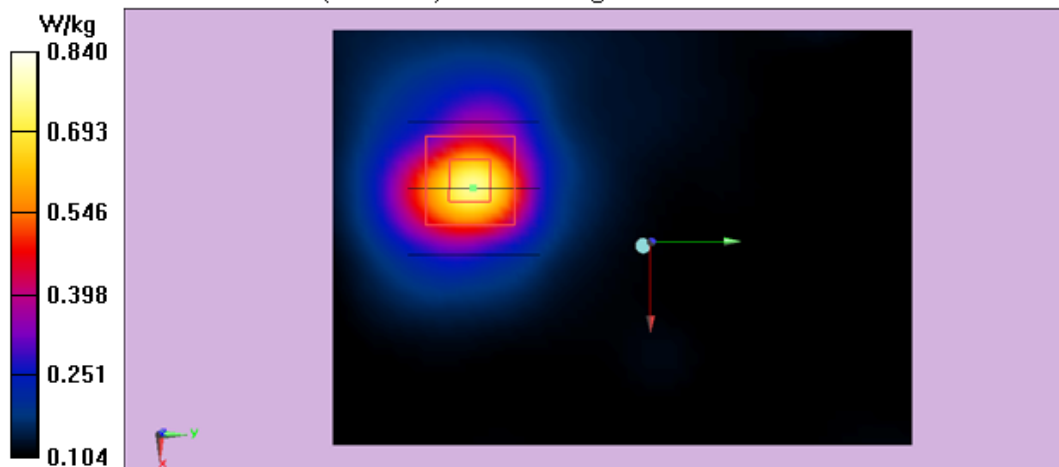
Measurement grid:  $dx=8\text{mm}$ ,  $dy=8\text{mm}$ ,  $dz=5\text{mm}$

Reference Value = 4.577 V/m; Power Drift = 0.16 dB

Peak SAR (extrapolated) = 1.96 W/kg

**SAR(1 g) = 0.223 W/kg; SAR(10 g) = 0.142 W/kg**

Maximum value of SAR (measured) = 0.840 W/kg



Test Laboratory: Audix SAR Lab

Date: 12/07/2016

**11a CH52(5260MHz Bottom)**

EUT: Notebook M/N: RZ09-0196

Communication System: UID 0, IEEE 802.11a WiFi 5.3GHz (0); Communication System Band: IEEE 802.11a WiFi 5.3GHz ; Frequency: 5260 MHz; Communication System PAR: 0 dB. Medium parameters used:  $f = 5260 \text{ MHz}$ ;  $\sigma = 5.235 \text{ S/m}$ ;  $\epsilon_r = 49.85$ ;  $\rho = 1000 \text{ kg/m}^3$

Phantom section: Flat Section

DASY5 Configuration:

- Probe: EX3DV4 - SN3767; ConvF(4.73, 4.73, 4.73); Calibrated: 30/01/2015;
- Modulation Compensation:
- Sensor-Surface: 4mm (Mechanical Surface Detection)
- Electronics: DAE4 Sn889; Calibrated: 02/02/2016
- Phantom: ELI 4.0; Type: QDOVA001BA; Serial: 1112
- Measurement SW: DASY52, Version 52.8 (8); SEMCAD X Version 14.6.10 (7331)

**Configuration/CH52(5260MHz Bottom)/Area Scan (51x71x1):** Interpolated grid:

$dx=2.000 \text{ mm}$ ,  $dy=2.000 \text{ mm}$

Maximum value of SAR (interpolated) = 0.562 W/kg

**Configuration/CH52(5260MHz Bottom)/Zoom Scan (5x5x7)/Cube 0:**

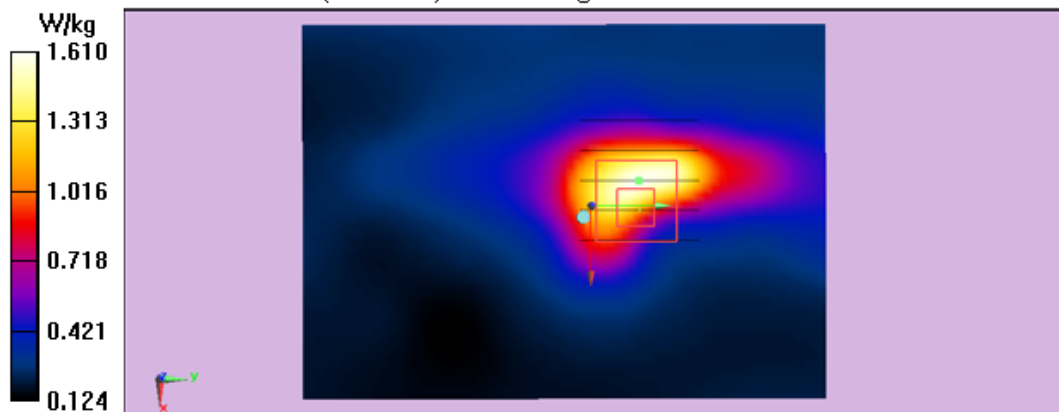
Measurement grid:  $dx=8\text{mm}$ ,  $dy=8\text{mm}$ ,  $dz=5\text{mm}$

Reference Value = 9.632 V/m; Power Drift = 0.02 dB

Peak SAR (extrapolated) = 3.50 W/kg

**SAR(1 g) = 0.621W/kg; SAR(10 g) = 0.267 W/kg**

Maximum value of SAR (measured) = 1.61 W/kg



Test Laboratory: Audix SAR Lab

Date: 12/07/2016

**11a CH52(5260MHz Screen Back)**

EUT: Notebook M/N: RZ09-0196

Communication System: UID 0, IEEE 802.11a WiFi 5.3GHz (0); Communication System Band: IEEE 802.11a WiFi 5.3GHz ; Frequency: 5260 MHz; Communication System PAR: 0 dB. Medium parameters used:  $f = 5260 \text{ MHz}$ ;  $\sigma = 5.235 \text{ S/m}$ ;  $\epsilon_r = 49.85$ ;  $\rho = 1000 \text{ kg/m}^3$

Phantom section: Flat Section

DASY5 Configuration:

- Probe: EX3DV4 - SN3767; ConvF(4.73, 4.73, 4.73); Calibrated: 30/01/2015;
- Modulation Compensation:
- Sensor-Surface: 4mm (Mechanical Surface Detection)
- Electronics: DAE4 Sn889; Calibrated: 02/02/2016
- Phantom: ELI 4.0; Type: QDOVA001BA; Serial: 1112
- Measurement SW: DASY52, Version 52.8 (8); SEMCAD X Version 14.6.10 (7331)

**Configuration/CH52(5260MHz Screen Back)/Area Scan (51x71x1):**

Interpolated grid:  $dx=2.000 \text{ mm}$ ,  $dy=2.000 \text{ mm}$

Maximum value of SAR (interpolated) = 0.549 W/kg

**Configuration/CH52(5260MHz Screen Back)/Zoom Scan (5x5x7)/Cube 0:**

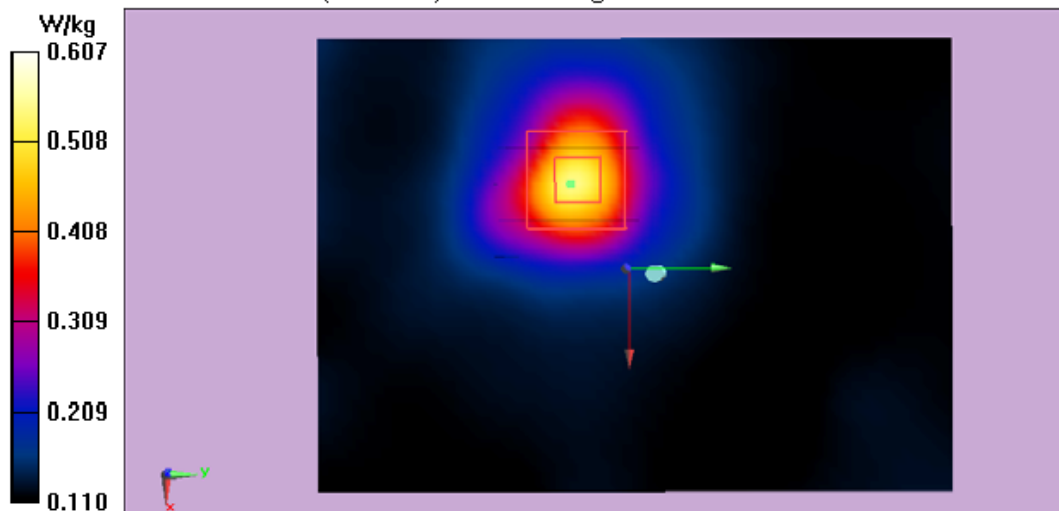
Measurement grid:  $dx=8\text{mm}$ ,  $dy=8\text{mm}$ ,  $dz=5\text{mm}$

Reference Value = 5.673 V/m; Power Drift = -0.16 dB

Peak SAR (extrapolated) = 1.36 W/kg

**SAR(1 g) = 0.232 W/kg; SAR(10 g) = 0.177 W/kg**

Maximum value of SAR (measured) = 0.607 W/kg



Test Laboratory: Audix SAR Lab

Date: 12/07/2016

**11a CH60(5300MHz Bottom)**

EUT: Notebook M/N: RZ09-0196

Communication System: UID 0, IEEE 802.11a WiFi 5.3GHz (0); Communication System Band: IEEE 802.11a WiFi 5.3GHz ; Frequency: 5300 MHz; Communication System PAR: 0 dB. Medium parameters used:  $f = 5300 \text{ MHz}$ ;  $\sigma = 5.196 \text{ S/m}$ ;  $\epsilon_r = 49.96$ ;  $\rho = 1000 \text{ kg/m}^3$

Phantom section: Flat Section

DASY5 Configuration:

- Probe: EX3DV4 - SN3767; ConvF(4.73, 4.73, 4.73); Calibrated: 30/01/2015;
- Modulation Compensation:
- Sensor-Surface: 4mm (Mechanical Surface Detection)
- Electronics: DAE4 Sn889; Calibrated: 02/02/2016
- Phantom: ELI 4.0; Type: QDOVA001BA; Serial: 1112
- Measurement SW: DASY52, Version 52.8 (8); SEMCAD X Version 14.6.10 (7331)

**Configuration/CH60(5300MHz Bottom)/Area Scan (51x71x1):** Interpolated grid:

$dx=2.000 \text{ mm}$ ,  $dy=2.000 \text{ mm}$

Maximum value of SAR (interpolated) = 0.594 W/kg

**Configuration/CH60(5300MHz Bottom)/Zoom Scan (5x5x7)/Cube 0:**

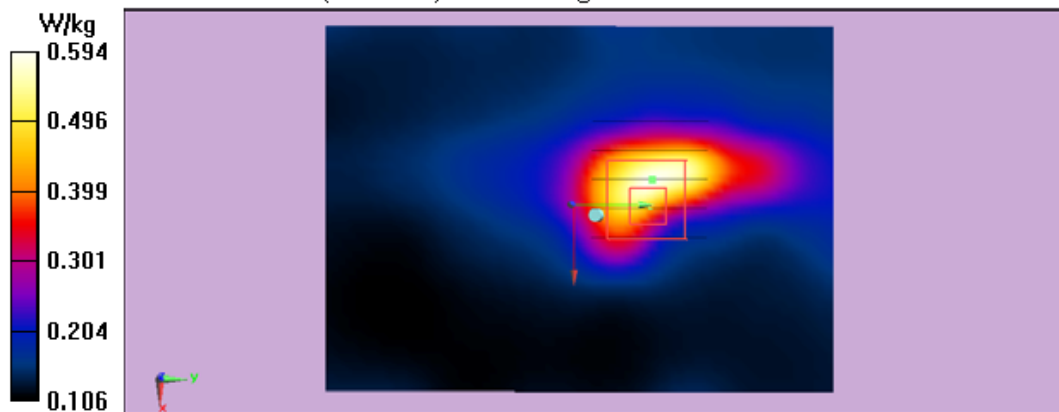
Measurement grid:  $dx=8\text{mm}$ ,  $dy=8\text{mm}$ ,  $dz=5\text{mm}$

Reference Value = 9.811 V/m; Power Drift = 0.17 dB

Peak SAR (extrapolated) = 3.55 W/kg

**SAR(1 g) = 0.623W/kg; SAR(10 g) = 0.172 W/kg**

Maximum value of SAR (measured) = 1.62 W/kg



Test Laboratory: Audix SAR Lab

Date: 12/07/2016

**11a CH60(5300MHz Screen Back)**

EUT: Notebook M/N: RZ09-0196

Communication System: UID 0, IEEE 802.11a WiFi 5.3GHz (0); Communication System Band: IEEE 802.11a WiFi 5.3GHz ; Frequency: 5300 MHz; Communication System PAR: 0 dB. Medium parameters used:  $f = 5300 \text{ MHz}$ ;  $\sigma = 5.196 \text{ S/m}$ ;  $\epsilon_r = 49.96$ ;  $\rho = 1000 \text{ kg/m}^3$

Phantom section: Flat Section

DASY5 Configuration:

- Probe: EX3DV4 - SN3767; ConvF(4.73, 4.73, 4.73); Calibrated: 30/01/2015;
- Modulation Compensation:
- Sensor-Surface: 4mm (Mechanical Surface Detection)
- Electronics: DAE4 Sn889; Calibrated: 02/02/2016
- Phantom: ELI 4.0; Type: QDOVA001BA; Serial: 1112
- Measurement SW: DASY52, Version 52.8 (8); SEMCAD X Version 14.6.10 (7331)

**Configuration/CH60(5300MHz Screen Back)/Area Scan (51x71x1):**

Interpolated grid:  $dx=2.000 \text{ mm}$ ,  $dy=2.000 \text{ mm}$

Maximum value of SAR (interpolated) = 0.546 W/kg

**Configuration/CH60(5300MHz Screen Back)/Zoom Scan (5x5x7)/Cube 0:**

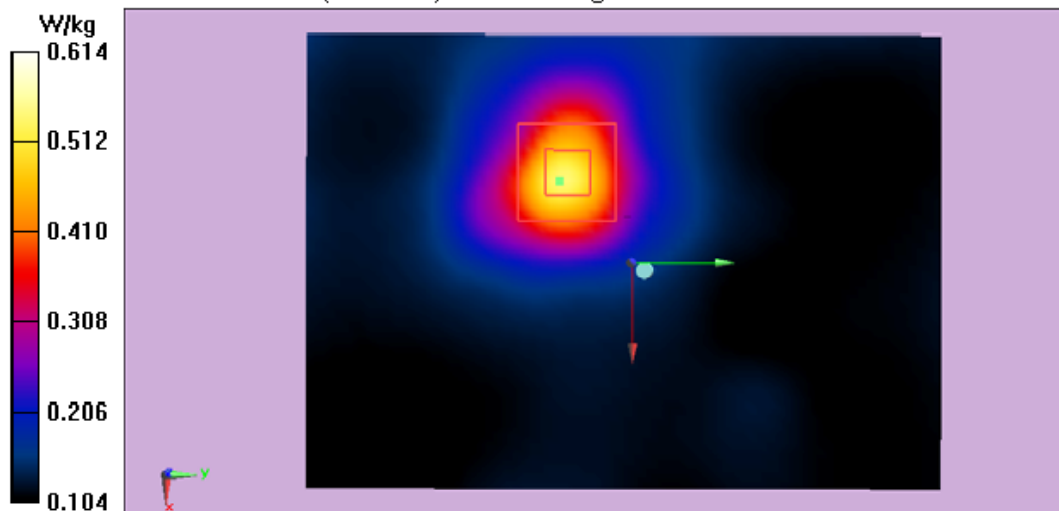
Measurement grid:  $dx=8\text{mm}$ ,  $dy=8\text{mm}$ ,  $dz=5\text{mm}$

Reference Value = 5.904 V/m; Power Drift = -0.02 dB

Peak SAR (extrapolated) = 1.40 W/kg

**SAR(1 g) = 0.241 W/kg; SAR(10 g) = 0.159 W/kg**

Maximum value of SAR (measured) = 0.614 W/kg



Test Laboratory: Audix SAR Lab

Date: 12/07/2016

**11n20 CH52(5260MHz Bottom)**

EUT: Notebook M/N: RZ09-0196

Communication System: UID 0, IEEE 802.11n WiFi 5.3GHz (0); Communication System Band: IEEE 802.11n WiFi 5.3GHz ; Frequency: 5260 MHz; Communication System PAR: 0 dB. Medium parameters used:  $f = 5260 \text{ MHz}$ ;  $\sigma = 5.235 \text{ S/m}$ ;  $\epsilon_r = 49.85$ ;  $\rho = 1000 \text{ kg/m}^3$

Phantom section: Flat Section

DASY5 Configuration:

- Probe: EX3DV4 - SN3767; ConvF(4.73, 4.73, 4.73); Calibrated: 30/01/2015;
- Modulation Compensation:
- Sensor-Surface: 4mm (Mechanical Surface Detection)
- Electronics: DAE4 Sn889; Calibrated: 02/02/2016
- Phantom: ELI 4.0; Type: QDOVA001BA; Serial: 1112
- Measurement SW: DASY52, Version 52.8 (8); SEMCAD X Version 14.6.10 (7331)

**Configuration/CH52(5260MHz Bottom)/Area Scan (51x71x1):** Interpolated grid:

$dx=2.000 \text{ mm}$ ,  $dy=2.000 \text{ mm}$

Maximum value of SAR (interpolated) = 0.558 W/kg

**Configuration/CH52(5260MHz Bottom)/Zoom Scan (5x5x7)/Cube 0:**

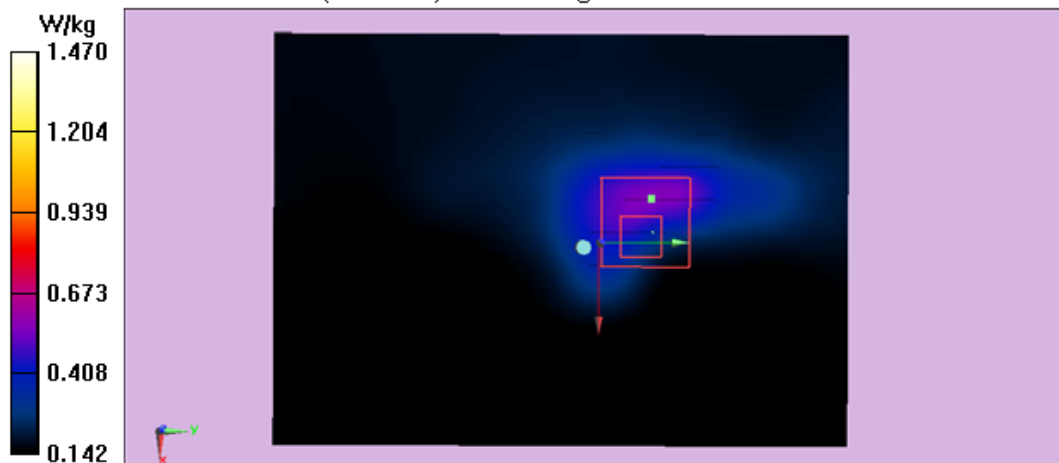
Measurement grid:  $dx=8\text{mm}$ ,  $dy=8\text{mm}$ ,  $dz=5\text{mm}$

Reference Value = 9.592 V/m; Power Drift = 0.02 dB

Peak SAR (extrapolated) = 3.27 W/kg

**SAR(1 g) = 0.619W/kg; SAR(10 g) = 0.287 W/kg**

Maximum value of SAR (measured) = 1.47 W/kg



.Test Laboratory: Audix SAR Lab

Date: 12/07/2016

**11n20 CH52 (5260MHz Screen Back)**

EUT: Notebook M/N: RZ09-0196

Communication System: UID 0, IEEE 802.11n WiFi 5.3GHz (0); Communication System Band: IEEE 802.11n WiFi 5.3GHz ; Frequency: 5260 MHz; Communication System PAR: 0 dB. Medium parameters used:  $f = 5260 \text{ MHz}$ ;  $\sigma = 5.235 \text{ S/m}$ ;  $\epsilon_r = 49.85$ ;  $\rho = 1000 \text{ kg/m}^3$

Phantom section: Flat Section

DASY5 Configuration:

- Probe: EX3DV4 - SN3767; ConvF(4.73, 4.73, 4.73); Calibrated: 30/01/2015;
- Modulation Compensation:
- Sensor-Surface: 4mm (Mechanical Surface Detection)
- Electronics: DAE4 Sn889; Calibrated: 02/02/2016
- Phantom: ELI 4.0; Type: QDOVA001BA; Serial: 1112
- Measurement SW: DASY52, Version 52.8 (8); SEMCAD X Version 14.6.10 (7331)

**Configuration/CH52(5260MHz Screen Back)/Area Scan (51x71x1):**

Interpolated grid:  $dx=2.000 \text{ mm}$ ,  $dy=2.000 \text{ mm}$

Maximum value of SAR (interpolated) = 0.549 W/kg

**Configuration/CH52(5260MHz Screen Back)/Zoom Scan (5x5x7)/Cube 0:**

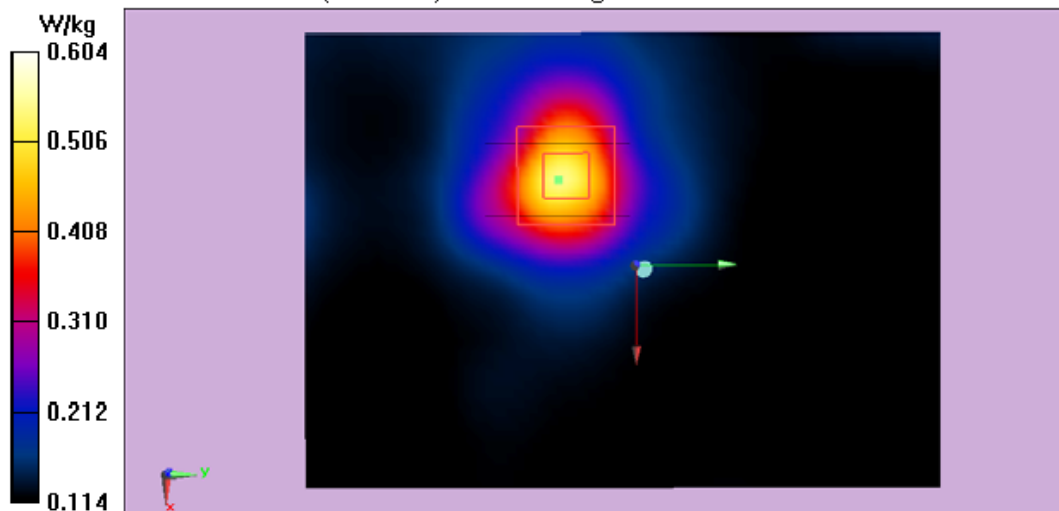
Measurement grid:  $dx=8\text{mm}$ ,  $dy=8\text{mm}$ ,  $dz=5\text{mm}$

Reference Value = 5.598 V/m; Power Drift = 0.18 dB

Peak SAR (extrapolated) = 1.35 W/kg

**SAR(1 g) = 0.230 W/kg; SAR(10 g) = 0.175 W/kg**

Maximum value of SAR (measured) = 0.604 W/kg





Test Laboratory: Audix SAR Lab

Date: 12/07/2016

**11a CH112(5560MHz Bottom)**

EUT: Notebook M/N: RZ09-0196

Communication System: UID 0, IEEE 802.11a WiFi 5.5GHz (0); Communication System Band: IEEE 802.11a WiFi 5.5GHz; Frequency: 5560 MHz; Communication System PAR: 0 dB. Medium parameters used:  $f = 5560 \text{ MHz}$ ;  $\sigma = 5.301 \text{ S/m}$ ;  $\epsilon_r = 49.71$ ;  $\rho = 1000 \text{ kg/m}^3$

Phantom section: Flat Section

DASY5 Configuration:

- Probe: EX3DV4 - SN3767; ConvF(4.25, 4.25, 4.25); Calibrated: 30/01/2015;
- Modulation Compensation:
- Sensor-Surface: 4mm (Mechanical Surface Detection)
- Electronics: DAE4 Sn889; Calibrated: 02/02/2016
- Phantom: ELI 4.0; Type: QDOVA001BA; Serial: 1112
- Measurement SW: DASY52, Version 52.8 (8); SEMCAD X Version 14.6.10 (7331)

**Configuration/CH112(5560MHz Bottom)/Area Scan (51x71x1):** Interpolated

grid:  $dx=2.000 \text{ mm}$ ,  $dy=2.000 \text{ mm}$

Maximum value of SAR (interpolated) = 0.784 W/kg

**Configuration/CH112(5560MHz Bottom)/Zoom Scan (5x5x7)/Cube 0:**

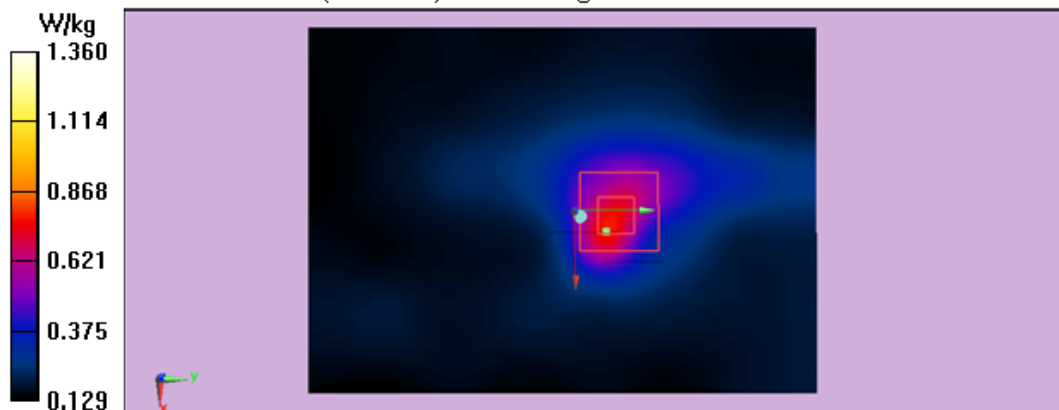
Measurement grid:  $dx=8\text{mm}$ ,  $dy=8\text{mm}$ ,  $dz=5\text{mm}$

Reference Value = 12.41 V/m; Power Drift = -0.15 dB

Peak SAR (extrapolated) = 3.47 W/kg

**SAR(1 g) = 0.619W/kg; SAR(10 g) = 0.296 W/kg**

Maximum value of SAR (measured) = 1.36 W/kg



Test Laboratory: Audix SAR Lab

Date: 12/07/2016

**11a CH112(5560MHz Screen Back)**

EUT: Notebook M/N: RZ09-0196

Communication System: UID 0, IEEE 802.11a WiFi 5.5GHz (0); Communication System Band: IEEE 802.11a WiFi 5.5GHz; Frequency: 5560 MHz; Communication System PAR: 0 dB. Medium parameters used:  $f = 5560 \text{ MHz}$ ;  $\sigma = 5.301 \text{ S/m}$ ;  $\epsilon_r = 49.71$ ;  $\rho = 1000 \text{ kg/m}^3$

Phantom section: Flat Section

DASY5 Configuration:

- Probe: EX3DV4 - SN3767; ConvF(4.25, 4.25, 4.25); Calibrated: 30/01/2015;
- Modulation Compensation:
- Sensor-Surface: 4mm (Mechanical Surface Detection)
- Electronics: DAE4 Sn889; Calibrated: 02/02/2016
- Phantom: ELI 4.0; Type: QDOVA001BA; Serial: 1112
- Measurement SW: DASY52, Version 52.8 (8); SEMCAD X Version 14.6.10 (7331)

**Configuration/CH112(5560MHz Screen Back)/Area Scan (51x71x1):**

Interpolated grid:  $dx=2.000 \text{ mm}$ ,  $dy=2.000 \text{ mm}$

Maximum value of SAR (interpolated) = 0.684 W/kg

**Configuration/CH112(5560MHz Screen Back)/Zoom Scan (5x5x7)/Cube 0:**

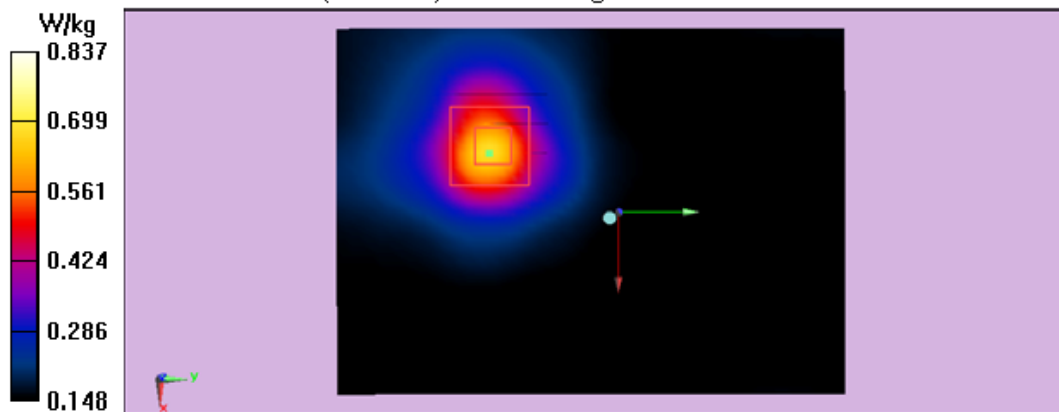
Measurement grid:  $dx=8\text{mm}$ ,  $dy=8\text{mm}$ ,  $dz=5\text{mm}$

Reference Value = 5.362 V/m; Power Drift = 0.20 dB

Peak SAR (extrapolated) = 1.93 W/kg

**SAR(1 g) = 0.241 W/kg; SAR(10 g) = 0.174 W/kg**

Maximum value of SAR (measured) = 0.837 W/kg



Test Laboratory: Audix SAR Lab

Date: 12/07/2016

**11a CH120(5600MHz Bottom)**

EUT: Notebook M/N: RZ09-0196

Communication System: UID 0, IEEE 802.11a WiFi 5.5GHz (0); Communication System Band: IEEE 802.11a WiFi 5.5GHz; Frequency: 5600 MHz; Communication System PAR: 0 dB. Medium parameters used:  $f = 5600 \text{ MHz}$ ;  $\sigma = 5.350 \text{ S/m}$ ;  $\epsilon_r = 49.65$ ;  $\rho = 1000 \text{ kg/m}^3$

Phantom section: Flat Section

DASY5 Configuration:

- Probe: EX3DV4 - SN3767; ConvF(4.25, 4.25, 4.25); Calibrated: 30/01/2015;
- Modulation Compensation:
- Sensor-Surface: 4mm (Mechanical Surface Detection)
- Electronics: DAE4 Sn889; Calibrated: 02/02/2016
- Phantom: ELI 4.0; Type: QDOVA001BA; Serial: 1112
- Measurement SW: DASY52, Version 52.8 (8); SEMCAD X Version 14.6.10 (7331)

**Configuration/CH120(5600MHz Bottom)/Area Scan (51x71x1):** Interpolated

grid:  $dx=2.000 \text{ mm}$ ,  $dy=2.000 \text{ mm}$

Maximum value of SAR (interpolated) = 0.767 W/kg

**Configuration/CH120(5600MHz Bottom)/Zoom Scan (5x5x7)/Cube 0:**

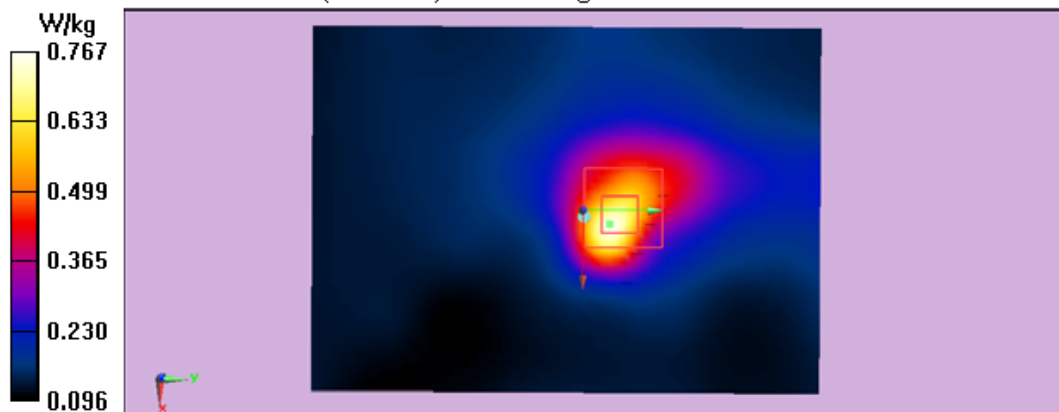
Measurement grid:  $dx=8\text{mm}$ ,  $dy=8\text{mm}$ ,  $dz=5\text{mm}$

Reference Value = 12.31 V/m; Power Drift = -0.17 dB

Peak SAR (extrapolated) = 3.63 W/kg

**SAR(1 g) = 0.622W/kg; SAR(10 g) = 0.283 W/kg**

Maximum value of SAR (measured) = 1.56 W/kg



Test Laboratory: Audix SAR Lab

Date: 12/07/2016

**11a CH120(5600MHz Screen Back)**

EUT: Notebook M/N: RZ09-0196

Communication System: UID 0, IEEE 802.11a WiFi 5.5GHz (0); Communication System Band: IEEE 802.11a WiFi 5.5GHz; Frequency: 5600 MHz; Communication System PAR: 0 dB. Medium parameters used:  $f = 5600 \text{ MHz}$ ;  $\sigma = 5.350 \text{ S/m}$ ;  $\epsilon_r = 49.65$ ;  $\rho = 1000 \text{ kg/m}^3$

Phantom section: Flat Section

DASY5 Configuration:

- Probe: EX3DV4 - SN3767; ConvF(4.25, 4.25, 4.25); Calibrated: 30/01/2015;
- Modulation Compensation:
- Sensor-Surface: 4mm (Mechanical Surface Detection)
- Electronics: DAE4 Sn889; Calibrated: 02/02/2016
- Phantom: ELI 4.0; Type: QDOVA001BA; Serial: 1112
- Measurement SW: DASY52, Version 52.8 (8); SEMCAD X Version 14.6.10 (7331)

**Configuration/CH120(5600MHz Screen Back)/Area Scan (51x71x1):**

Interpolated grid:  $dx=2.000 \text{ mm}$ ,  $dy=2.000 \text{ mm}$

Maximum value of SAR (interpolated) = 0.708 W/kg

**Configuration/CH120(5600MHz Screen Back)/Zoom Scan (5x5x7)/Cube 0:**

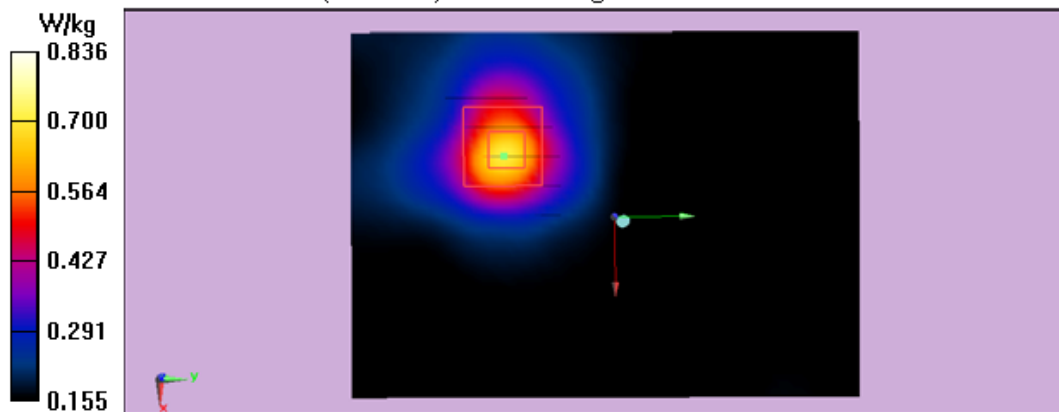
Measurement grid:  $dx=8\text{mm}$ ,  $dy=8\text{mm}$ ,  $dz=5\text{mm}$

Reference Value = 5.260 V/m; Power Drift = 0.17 dB

Peak SAR (extrapolated) = 1.95 W/kg

**SAR(1 g) = 0.239 W/kg; SAR(10 g) = 0.178 W/kg**

Maximum value of SAR (measured) = 0.836 W/kg



Test Laboratory: Audix SAR Lab

Date: 12/07/2016

**11n40 CH134(5670MHz Bottom)**

EUT: Notebook M/N: RZ09-0196

Communication System: UID 0, IEEE 802.11n WiFi 5.5GHz (0); Communication System Band: IEEE 802.11n WiFi 5.5GHz; Frequency: 5670 MHz; Communication System PAR: 0 dB. Medium parameters used:  $f = 5670 \text{ MHz}$ ;  $\sigma = 5.456 \text{ S/m}$ ;  $\epsilon_r = 49.34$ ;  $\rho = 1000 \text{ kg/m}^3$

Phantom section: Flat Section

DASY5 Configuration:

- Probe: EX3DV4 - SN3767; ConvF(4.25, 4.25, 4.25); Calibrated: 30/01/2015;
- Modulation Compensation:
- Sensor-Surface: 4mm (Mechanical Surface Detection)
- Electronics: DAE4 Sn889; Calibrated: 02/02/2016
- Phantom: ELI 4.0; Type: QDOVA001BA; Serial: 1112
- Measurement SW: DASY52, Version 52.8 (8); SEMCAD X Version 14.6.10 (7331)

**Configuration/CH134(5670MHz Bottom)/Area Scan (51x71x1):** Interpolated

grid:  $dx=2.000 \text{ mm}$ ,  $dy=2.000 \text{ mm}$

Maximum value of SAR (interpolated) = 0.918 W/kg

**Configuration/CH134(5670MHz Bottom)/Zoom Scan (5x5x7)/Cube 0:**

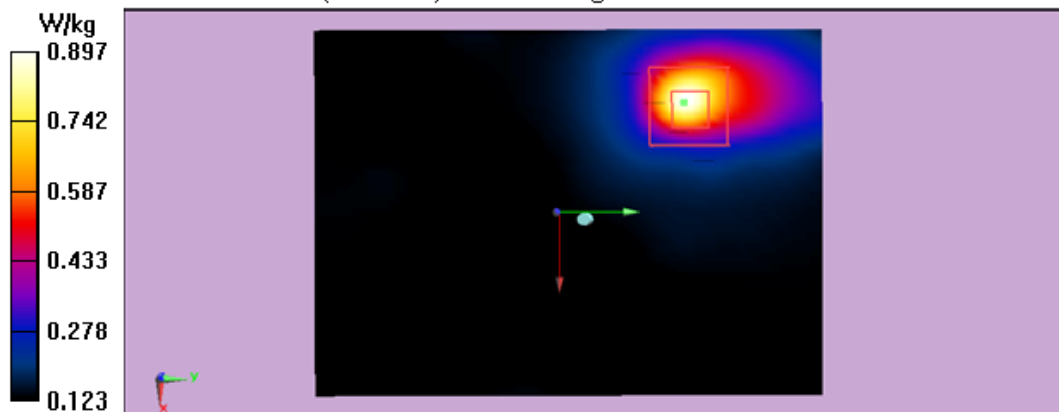
Measurement grid:  $dx=8\text{mm}$ ,  $dy=8\text{mm}$ ,  $dz=5\text{mm}$

Reference Value = 4.842 V/m; Power Drift = 0.05 dB

Peak SAR (extrapolated) = 2.21 W/kg

**SAR(1 g) = 0.694W/kg; SAR(10 g) = 0.268 W/kg**

Maximum value of SAR (measured) = 0.897 W/kg



Test Laboratory: Audix SAR Lab

Date: 12/07/2016

**11n40 CH134(5670MHz Screen Back)**

EUT: Notebook M/N: RZ09-0196

Communication System: UID 0, IEEE 802.11n WiFi 5.5GHz (0); Communication System Band: IEEE 802.11n WiFi 5.5GHz; Frequency: 5670 MHz; Communication System PAR: 0 dB. Medium parameters used:  $f = 5670 \text{ MHz}$ ;  $\sigma = 5.456 \text{ S/m}$ ;  $\epsilon_r = 49.34$ ;  $\rho = 1000 \text{ kg/m}^3$

Phantom section: Flat Section

DASY5 Configuration:

- Probe: EX3DV4 - SN3767; ConvF(4.25, 4.25, 4.25); Calibrated: 30/01/2015;
- Modulation Compensation:
- Sensor-Surface: 4mm (Mechanical Surface Detection)
- Electronics: DAE4 Sn889; Calibrated: 02/02/2016
- Phantom: ELI 4.0; Type: QDOVA001BA; Serial: 1112
- Measurement SW: DASY52, Version 52.8 (8); SEMCAD X Version 14.6.10 (7331)

**Configuration/CH134(5670MHz Screen Back)/Area Scan (51x71x1):**

Interpolated grid:  $dx=2.000 \text{ mm}$ ,  $dy=2.000 \text{ mm}$

Maximum value of SAR (interpolated) =  $0.624 \text{ W/kg}$

**Configuration/CH134(5670MHz Screen Back)/Zoom Scan (5x5x7)/Cube 0:**

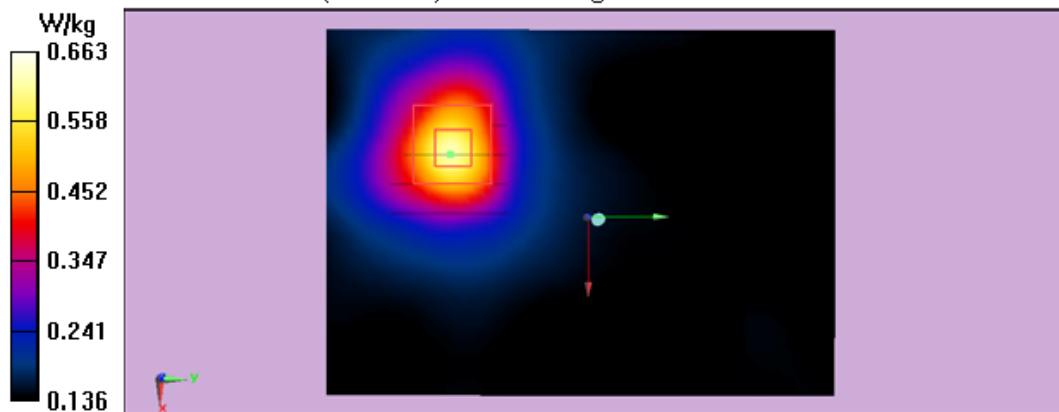
Measurement grid:  $dx=8\text{mm}$ ,  $dy=8\text{mm}$ ,  $dz=5\text{mm}$

Reference Value =  $5.084 \text{ V/m}$ ; Power Drift =  $-0.19 \text{ dB}$

Peak SAR (extrapolated) =  $1.56 \text{ W/kg}$

**SAR(1 g) =  $0.203 \text{ W/kg}$ ; SAR(10 g) =  $0.122 \text{ W/kg}$**

Maximum value of SAR (measured) =  $0.663 \text{ W/kg}$



Test Laboratory: Audix SAR Lab

Date: 13/07/2016

**11a CH149(5745MHz Bottom)**

EUT: Notebook M/N: RZ09-0196

Communication System: UID 0, IEEE 802.11a WiFi 5.8GHz (0); Communication System Band: IEEE 802.11a WiFi 5.8GHz ; Frequency: 5745 MHz; Communication System PAR: 0 dB. Medium parameters used:  $f = 5800$  MHz;  $\sigma = 6.07$  S/m;  $\epsilon_r = 46$ ;  $\rho = 1000$  kg/m<sup>3</sup>

Phantom section: Flat Section

DASY5 Configuration:

- Probe: EX3DV4 - SN3767; ConvF(4.33, 4.33, 4.33); Calibrated: 30/01/2015;
- Modulation Compensation:
- Sensor-Surface: 4mm (Mechanical Surface Detection)
- Electronics: DAE4 Sn889; Calibrated: 02/02/2016
- Phantom: ELI 4.0; Type: QDOVA001BA; Serial: 1112
- Measurement SW: DASY52, Version 52.8 (8); SEMCAD X Version 14.6.10 (7331)

**Configuration/CH149(5745MHz Bottom)/Area Scan (51x71x1):** Interpolated grid: dx=2.000 mm, dy=2.000 mm

Maximum value of SAR (interpolated) = 0.581 W/kg

**Configuration/CH149(5745MHz Bottom)/Zoom Scan (5x5x7)/Cube 0:**

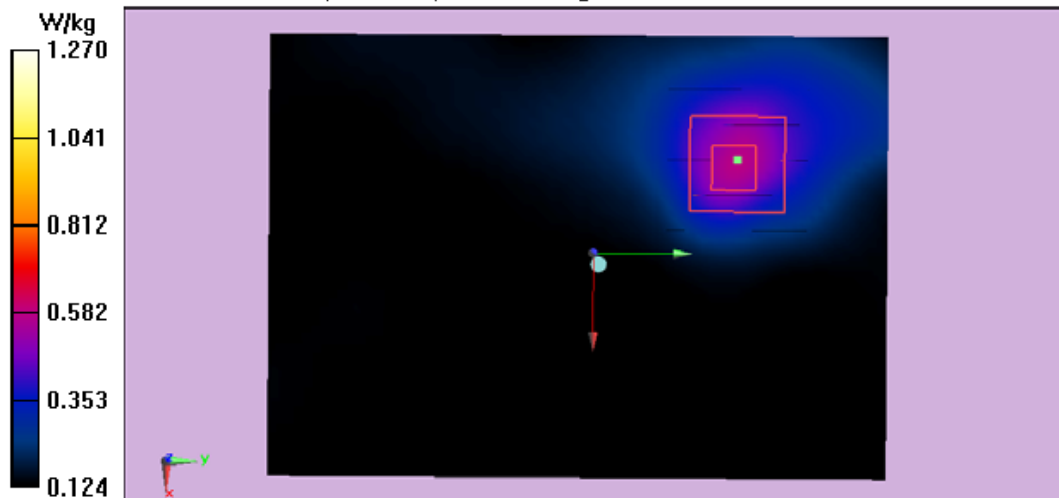
Measurement grid: dx=8mm, dy=8mm, dz=5mm

Reference Value = 4.454 V/m; Power Drift = 0.00 dB

Peak SAR (extrapolated) = 3.19 W/kg

**SAR(1 g) = 0.607 W/kg; SAR(10 g) = 0.254 W/kg**

Maximum value of SAR (measured) = 1.27 W/kg



Test Laboratory: Audix SAR Lab

Date: 13/07/2016

**11a CH149(5745MHz Screen Back)**

EUT: Notebook M/N: RZ09-0196

Communication System: UID 0, IEEE 802.11a WiFi 5.8GHz (0); Communication System Band: IEEE 802.11a WiFi 5.8GHz ; Frequency: 5745 MHz; Communication System PAR: 0 dB. Medium parameters used:  $f = 5745 \text{ MHz}$ ;  $\sigma = 5.713 \text{ S/m}$ ;  $\epsilon_r = 48.21$ ;  $\rho = 1000 \text{ kg/m}^3$

Phantom section: Flat Section

DASY5 Configuration:

- Probe: EX3DV4 - SN3767; ConvF(4.33, 4.33, 4.33); Calibrated: 30/01/2015;
- Modulation Compensation:
- Sensor-Surface: 4mm (Mechanical Surface Detection)
- Electronics: DAE4 Sn889; Calibrated: 02/02/2016
- Phantom: ELI 4.0; Type: QDOVA001BA; Serial: 1112
- Measurement SW: DASY52, Version 52.8 (8); SEMCAD X Version 14.6.10 (7331)

**Configuration/CH149(5745MHz Screen Back)/Area Scan (51x71x1):**

Interpolated grid:  $dx=2.000 \text{ mm}$ ,  $dy=2.000 \text{ mm}$

Maximum value of SAR (interpolated) = 0.826 W/kg

**Configuration/CH149(5745MHz Screen Back)/Zoom Scan (5x5x7)/Cube 0:**

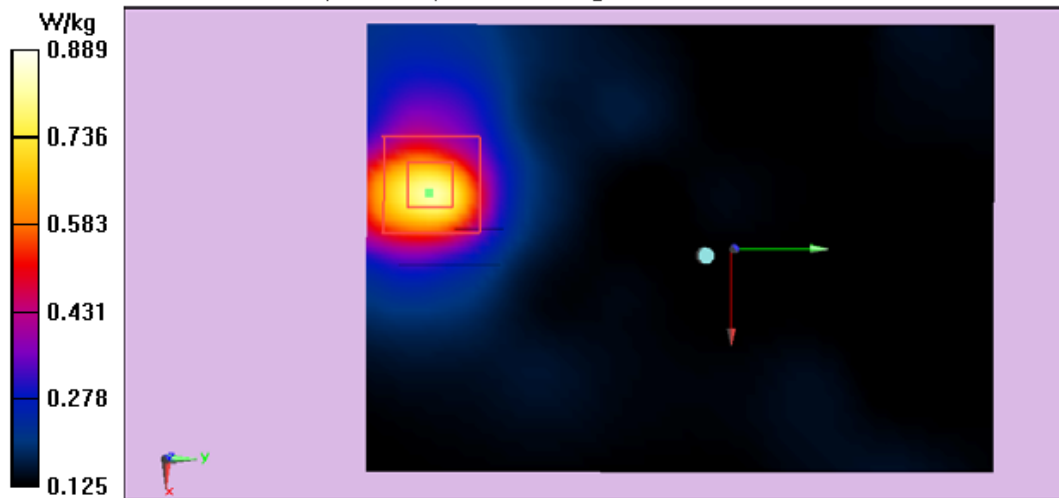
Measurement grid:  $dx=8\text{mm}$ ,  $dy=8\text{mm}$ ,  $dz=5\text{mm}$

Reference Value = 4.608 V/m; Power Drift = 0.18 dB

Peak SAR (extrapolated) = 2.13 W/kg

**SAR(1 g) = 0.260 W/kg; SAR(10 g) = 0.167 W/kg**

Maximum value of SAR (measured) = 0.889 W/kg





Test Laboratory: Audix SAR Lab

Date: 13/07/2016

**11a CH165(5825MHz Bottom)**

EUT: Notebook M/N: RZ09-0196

Communication System: UID 0, IEEE 802.11a WiFi 5.8GHz (0); Communication System Band: IEEE 802.11a WiFi 5.8GHz ; Frequency: 5825 MHz; Communication System PAR: 0 dB. Medium parameters used:  $f = 5825 \text{ MHz}$ ;  $\sigma = 6.101 \text{ S/m}$ ;  $\epsilon_r = 47.88$ ;  $\rho = 1000 \text{ kg/m}^3$

Phantom section: Flat Section

DASY5 Configuration:

- Probe: EX3DV4 - SN3767; ConvF(4.33, 4.33, 4.33); Calibrated: 30/01/2015;
- Modulation Compensation:
- Sensor-Surface: 4mm (Mechanical Surface Detection)
- Electronics: DAE4 Sn889; Calibrated: 02/02/2016
- Phantom: ELI 4.0; Type: QDOVA001BA; Serial: 1112
- Measurement SW: DASY52, Version 52.8 (8); SEMCAD X Version 14.6.10 (7331)

**Configuration/CH165(5825MHz Bottom)/Area Scan (51x71x1):** Interpolated

grid:  $dx=2.000 \text{ mm}$ ,  $dy=2.000 \text{ mm}$

Maximum value of SAR (interpolated) = 0.576 W/kg

**Configuration/CH165(5825MHz Bottom)/Zoom Scan (5x5x7)/Cube 0:**

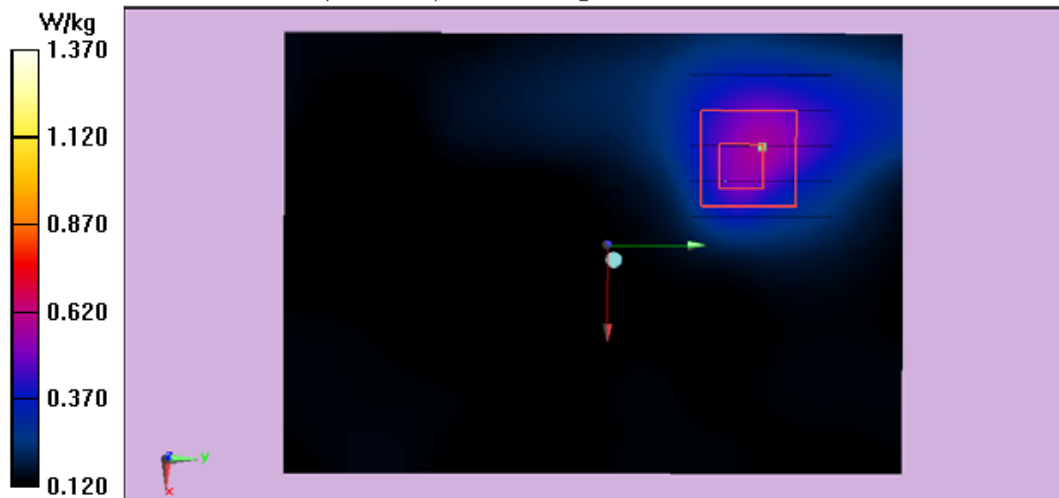
Measurement grid:  $dx=8\text{mm}$ ,  $dy=8\text{mm}$ ,  $dz=5\text{mm}$

Reference Value = 4.675 V/m; Power Drift = 0.02 dB

Peak SAR (extrapolated) = 3.37 W/kg

**SAR(1 g) = 0.613W/kg; SAR(10 g) = 0.270 W/kg**

Maximum value of SAR (measured) = 1.37 W/kg



Test Laboratory: Audix SAR Lab

Date: 13/07/2016

**11a CH165(5825MHz Screen Back)**

EUT: Notebook M/N: RZ09-0196

Communication System: UID 0, IEEE 802.11a WiFi 5.8GHz (0); Communication System Band: IEEE 802.11a WiFi 5.8GHz ; Frequency: 5825 MHz; Communication System PAR: 0 dB. Medium parameters used:  $f = 5825 \text{ MHz}$ ;  $\sigma = 6.101 \text{ S/m}$ ;  $\epsilon_r = 47.88$ ;  $\rho = 1000 \text{ kg/m}^3$

Phantom section: Flat Section

DASY5 Configuration:

- Probe: EX3DV4 - SN3767; ConvF(4.33, 4.33, 4.33); Calibrated: 30/01/2015;
- Modulation Compensation:
- Sensor-Surface: 4mm (Mechanical Surface Detection)
- Electronics: DAE4 Sn889; Calibrated: 02/02/2016
- Phantom: ELI 4.0; Type: QDOVA001BA; Serial: 1112
- Measurement SW: DASY52, Version 52.8 (8); SEMCAD X Version 14.6.10 (7331)

**Configuration/CH165(5825MHz Screen Back)/Area Scan (51x71x1):**

Interpolated grid:  $dx=2.000 \text{ mm}$ ,  $dy=2.000 \text{ mm}$

Maximum value of SAR (interpolated) =  $0.832 \text{ W/kg}$

**Configuration/CH165(5825MHz Screen Back)/Zoom Scan (5x5x7)/Cube 0:**

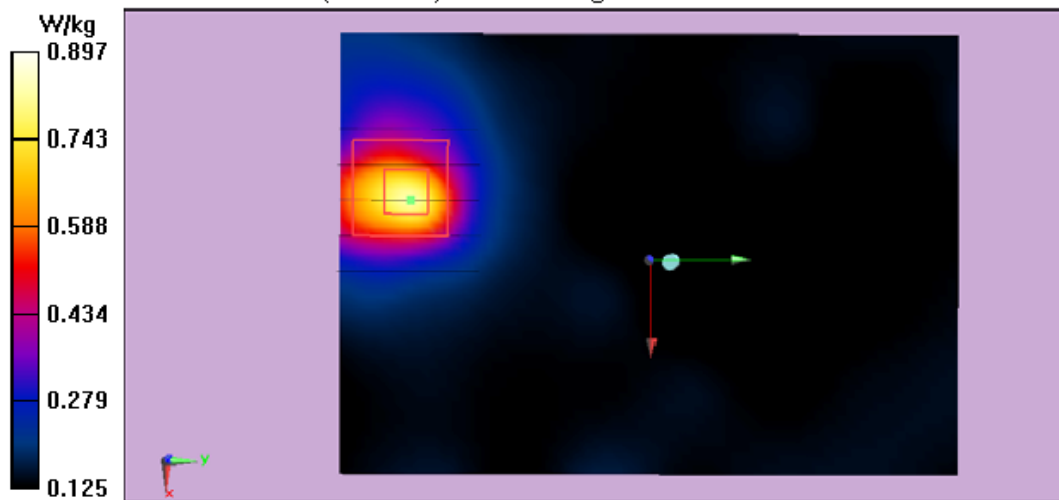
Measurement grid:  $dx=8\text{mm}$ ,  $dy=8\text{mm}$ ,  $dz=5\text{mm}$

Reference Value =  $4.692 \text{ V/m}$ ; Power Drift =  $0.15 \text{ dB}$

Peak SAR (extrapolated) =  $2.15 \text{ W/kg}$

**SAR(1 g) =  $0.266 \text{ W/kg}$ ; SAR(10 g) =  $0.168 \text{ W/kg}$**

Maximum value of SAR (measured) =  $0.897 \text{ W/kg}$



Test Laboratory: Audix SAR Lab

Date: 13/07/2016

**11ac40 CH151(5755MHz Bottom)**

EUT: Notebook M/N: RZ09-0196

Communication System: UID 0, IEEE 802.11ac WiFi 5.8GHz (0); Communication System Band: IEEE 802.11ac WiFi 5.8GHz ; Frequency: 5755 MHz; Communication System PAR: 0 dB. Medium parameters used:  $f = 5755 \text{ MHz}$ ;  $\sigma = 5.821 \text{ S/m}$ ;  $\epsilon_r = 48.09$ ;  $\rho = 1000 \text{ kg/m}^3$

Phantom section: Flat Section

DASY5 Configuration:

- Probe: EX3DV4 - SN3767; ConvF(4.33, 4.33, 4.33); Calibrated: 30/01/2015;
- Modulation Compensation:
- Sensor-Surface: 4mm (Mechanical Surface Detection)
- Electronics: DAE4 Sn889; Calibrated: 02/02/2016
- Phantom: ELI 4.0; Type: QDOVA001BA; Serial: 1112
- Measurement SW: DASY52, Version 52.8 (8); SEMCAD X Version 14.6.10 (7331)

**Configuration/CH151(5755MHz Bottom)/Area Scan (51x71x1):** Interpolated

grid:  $dx=2.000 \text{ mm}$ ,  $dy=2.000 \text{ mm}$

Maximum value of SAR (interpolated) = 1.61 W/kg

**Configuration/CH151(5755MHz Bottom)/Zoom Scan (5x5x7)/Cube 0:**

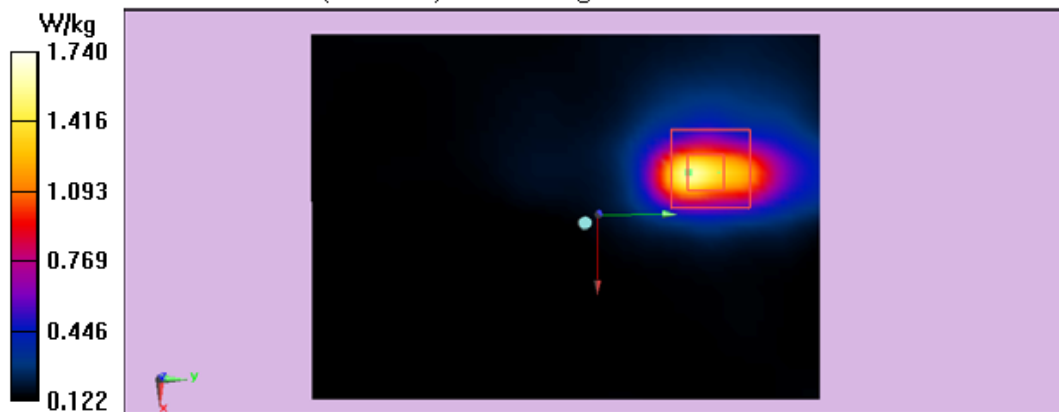
Measurement grid:  $dx=8\text{mm}$ ,  $dy=8\text{mm}$ ,  $dz=5\text{mm}$

Reference Value = 4.879 V/m; Power Drift = 0.03 dB

Peak SAR (extrapolated) = 4.04 W/kg

**SAR(1 g) = 0.635W/kg; SAR(10 g) = 0.218 W/kg**

Maximum value of SAR (measured) = 1.74 W/kg



Test Laboratory: Audix SAR Lab

Date: 13/07/2016

**11ac40 CH151(5755MHz Screen Back)**

EUT: Notebook M/N: RZ09-0196

Communication System: UID 0, IEEE 802.11ac WiFi 5.8GHz (0); Communication System Band: IEEE 802.11ac WiFi 5.8GHz ; Frequency: 5755 MHz; Communication System PAR: 0 dB. Medium parameters used:  $f = 5755 \text{ MHz}$ ;  $\sigma = 5.821 \text{ S/m}$ ;  $\epsilon_r = 48.09$ ;  $\rho = 1000 \text{ kg/m}^3$

Phantom section: Flat Section

DASY5 Configuration:

- Probe: EX3DV4 - SN3767; ConvF(4.33, 4.33, 4.33); Calibrated: 30/01/2015;
- Modulation Compensation:
- Sensor-Surface: 4mm (Mechanical Surface Detection)
- Electronics: DAE4 Sn889; Calibrated: 02/02/2016
- Phantom: ELI 4.0; Type: QDOVA001BA; Serial: 1112
- Measurement SW: DASY52, Version 52.8 (8); SEMCAD X Version 14.6.10 (7331)

**Configuration/CH151(5755MHz Screen Back)/Area Scan (51x71x1):**

Interpolated grid:  $dx=2.000 \text{ mm}$ ,  $dy=2.000 \text{ mm}$

Maximum value of SAR (interpolated) = 0.767 W/kg

**Configuration/CH151(5755MHz Screen Back)/Zoom Scan (5x5x7)/Cube 0:**

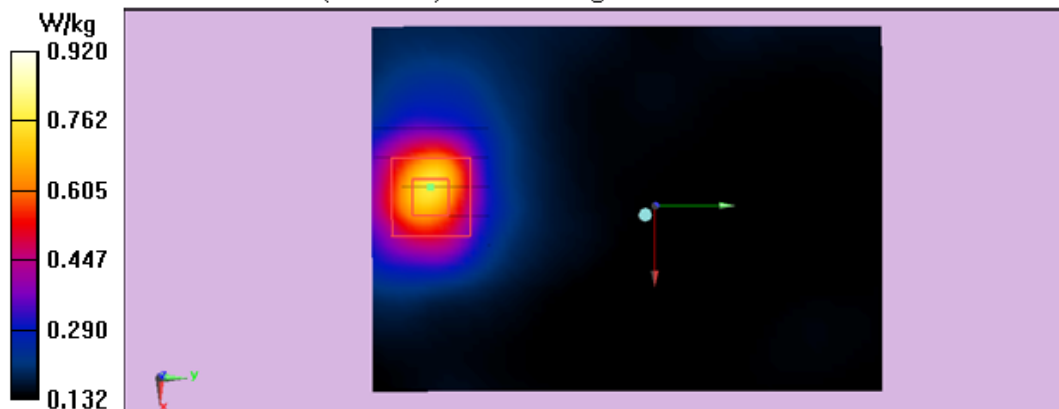
Measurement grid:  $dx=8\text{mm}$ ,  $dy=8\text{mm}$ ,  $dz=5\text{mm}$

Reference Value = 4.694 V/m; Power Drift = 0.11 dB

Peak SAR (extrapolated) = 2.21 W/kg

**SAR(1 g) = 0.221 W/kg; SAR(10 g) = 0.167 W/kg**

Maximum value of SAR (measured) = 0.920 W/kg



## 10. ANNEX C: DASY CABLIBRATION CERTIFICATE

Schmid & Partner Engineering AG

**s p e a g**

Zugheutswalze 43, 8004 Zurich, Switzerland  
Phone: +41 44 245 9700, Fax: +41 44 245 9779  
info@speag.com, <http://www.speag.com>

### IMPORTANT NOTICE

#### USAGE OF THE DAE 4

The DAE unit is a delicate, high precision instrument and requires careful treatment by the user. There are no serviceable parts inside the DAE. Special attention shall be given to the following points:

**Battery Exchange:** The battery cover of the DAE4 unit is closed using a screw, over tightening the screw may cause the threads inside the DAE to wear out.

**Shipping of the DAE:** Before shipping the DAE to SPEAG for calibration, remove the batteries and pack the DAE in an antistatic bag. This antistatic bag shall then be packed into a larger box or container which protects the DAE from impacts during transportation. The package shall be marked to indicate that a fragile instrument is inside.

**E-Stop Failures:** Touch detection may be malfunctioning due to broken magnets in the E-stop. Rough handling of the E-stop may lead to damage of these magnets. Touch and collision errors are often caused by dust and dirt accumulated in the E-stop. To prevent E-stop failure, the customer shall always mount the probe to the DAE carefully and keep the DAE unit in a non-dusty environment if not used for measurements.

**Repair:** Minor repairs are performed at no extra cost during the annual calibration. However, SPEAG reserves the right to charge for any repair especially if rough unprofessional handling caused the defect.

**DASY Configuration Files:** Since the exact values of the DAE input resistances, as measured during the calibration procedure of a DAE unit, are not used by the DASY software, a nominal value of 200 M $\Omega$  is given in the corresponding configuration file.

#### Important Note:

**Warranty and calibration is void if the DAE unit is disassembled partly or fully by the Customer.**

#### Important Note:

**Never attempt to grease or oil the E-stop assembly. Cleaning and readjusting of the E-stop assembly is allowed by certified SPEAG personnel only and is part of the annual calibration procedure.**

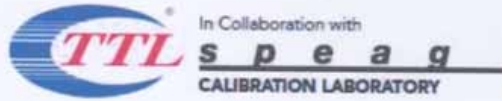
#### Important Note:

**To prevent damage of the DAE probe connector pins, use great care when installing the probe to the DAE. Carefully connect the probe with the connector notch oriented in the mating position. Avoid any rotational movement of the probe body versus the DAE while turning the locking nut of the connector. The same care shall be used when disconnecting the probe from the DAE.**

Schmid & Partner Engineering

TN\_SR040315AD DAE4.doc

11.12.2009



Add: No.51 Xueyuan Road, Haidian District, Beijing, 100191, China  
 Tel: +86-10-62304633-2218 Fax: +86-10-62304633-2209  
 E-mail: [cttl@chinattl.com](mailto:cttl@chinattl.com) [Http://www.chinattl.cn](http://www.chinattl.cn)



中国认可  
 国际互认  
 校准  
 CALIBRATION  
 CNAS L0570

Client : **Audix**

Certificate No: Z16-97013

**CALIBRATION CERTIFICATE**

Object: DAE4 - SN: 899

Calibration Procedure(s): FD-Z11-2-002-01  
 Calibration Procedure for the Data Acquisition Electronics (DAEx)

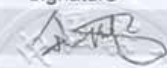
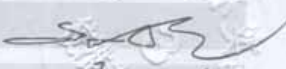
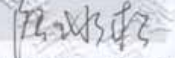
Calibration date: February 02, 2016

This calibration Certificate documents the traceability to national standards, which realize the physical units of measurements(SI). The measurements and the uncertainties with confidence probability are given on the following pages and are part of the certificate.

All calibrations have been conducted in the closed laboratory facility: environment temperature(22±3)°C and humidity<70%.

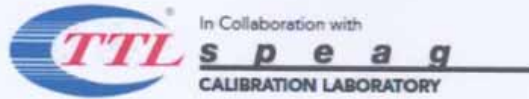
Calibration Equipment used (M&TE critical for calibration)

Primary Standards	ID #	Cal Date(Calibrated by, Certificate No.)	Scheduled Calibration
Process Calibrator 753	1971018	06-July-15 (CTTL, No:J15X04257)	July-16

	Name	Function	Signature
Calibrated by:	Yu Zongying	SAR Test Engineer	
Reviewed by:	Qi Dianyuan	SAR Project Leader	
Approved by:	Lu Bingsong	Deputy Director of the laboratory	

Issued: February 03, 2016

This calibration certificate shall not be reproduced except in full without written approval of the laboratory.



Add: No.51 Xueyuan Road, Haidian District, Beijing, 100191, China  
Tel: +86-10-62304633-2218 Fax: +86-10-62304633-2209  
E-mail: cttl@chinattl.com Http://www.chinattl.cn

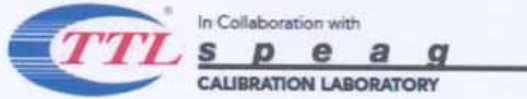
**Glossary:**

DAE data acquisition electronics  
Connector angle information used in DASY system to align probe sensor X to the robot coordinate system.

**Methods Applied and Interpretation of Parameters:**

- *DC Voltage Measurement:* Calibration Factor assessed for use in DASY system by comparison with a calibrated instrument traceable to national standards. The figure given corresponds to the full scale range of the voltmeter in the respective range.
- *Connector angle:* The angle of the connector is assessed measuring the angle mechanically by a tool inserted. Uncertainty is not required.
- The report provide only calibration results for DAE, it does not contain other performance test results.





In Collaboration with  
**TTL speag**  
**CALIBRATION LABORATORY**  
 Add: No.51 Xueyuan Road, Haidian District, Beijing, 100191, China  
 Tel: +86-10-62304633-2218 Fax: +86-10-62304633-2209  
 E-mail: cttl@chinattl.com Http://www.chinattl.cn

**DC Voltage Measurement**

A/D - Converter Resolution nominal

High Range: 1LSB = 6.1μV, full range = -100...+300 mV  
 Low Range: 1LSB = 61nV, full range = -1.....+3mV

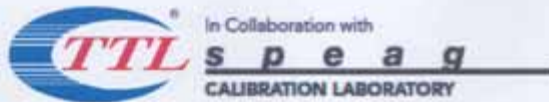
DASY measurement parameters: Auto Zero Time: 3 sec; Measuring time: 3 sec

Calibration Factors	X	Y	Z
High Range	402.452 ± 0.15% (k=2)	403.036 ± 0.15% (k=2)	403.026 ± 0.15% (k=2)
Low Range	3.98069 ± 0.7% (k=2)	3.97751 ± 0.7% (k=2)	3.98419 ± 0.7% (k=2)

**Connector Angle**

Connector Angle to be used in DASY system	352.5° ± 1°
---	-------------





Add: No.51 Xueyuan Road, Haidian District, Beijing, 100191, China  
 Tel: +86-10-62304633-2079 Fax: +86-10-62304633-2504  
 E-mail: cttl@chinattl.com Http://www.chinattl.cn



Client **Audix** Certificate No: **Z15-97001**

**CALIBRATION CERTIFICATE**

Object: EX3DV4 - SN:3767  
 Calibration Procedure(s): FD-Z11-2-004-01  
 Calibration Procedures for Dosimetric E-field Probes  
 Calibration date: January 30, 2015

This calibration Certificate documents the traceability to national standards, which realize the physical units of measurements(SI). The measurements and the uncertainties with confidence probability are given on the following pages and are part of the certificate.

All calibrations have been conducted in the closed laboratory facility: environment temperature(22±3)°C and humidity<70%.

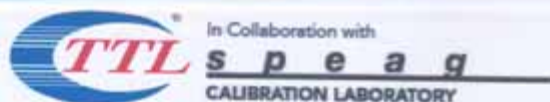
Calibration Equipment used (M&TE critical for calibration)

Primary Standards	ID #	Cal Date(Calibrated by, Certificate No.)	Scheduled Calibration
Power Meter NRP2	101919	01-Jul-14 (CTTL, No.J14X02146)	Jun-15
Power sensor NRP-Z91	101547	01-Jul-14 (CTTL, No.J14X02146)	Jun-15
Power sensor NRP-Z91	101548	01-Jul-14 (CTTL, No.J14X02146)	Jun-15
Reference10dBAttenuator	18N50W-10dB	13-Mar-14(TMC,No.JZ14-1103)	Mar-16
Reference20dBAttenuator	18N50W-20dB	13-Mar-14(TMC,No.JZ14-1104)	Mar-16
Reference Probe EX3DV4	SN 3617	28-Aug-14(SPEAG,No.EX3-3617_Aug14)	Aug-15
DAE4	SN 777	17-Sep-14 (SPEAG, DAE4-777_Sep14)	Sep -15
Secondary Standards	ID #	Cal Date(Calibrated by, Certificate No.)	Scheduled Calibration
SignalGeneratorMG3700A	6201052605	01-Jul-14 (CTTL, No.J14X02145)	Jun-15
Network Analyzer E5071C	MY46110673	15-Feb-14 (TMC, No.JZ14-781)	Feb-15

	Name	Function	Signature
Calibrated by:	Yu Zongying	SAR Test Engineer	
Reviewed by:	Qi Dianyuan	SAR Project Leader	
Approved by:	Lu Bingsong	Deputy Director of the laboratory	

Issued: January 31, 2015

This calibration certificate shall not be reproduced except in full without written approval of the laboratory.



Add: No.51 Xueyuan Road, Haidian District, Beijing, 100191, China  
 Tel: +86-10-62304633-2079 Fax: +86-10-62304633-2504  
 E-mail: entl@chinattl.com Http://www.chinattl.cn

**Glossary:**

TSL	tissue simulating liquid
NORM <sub>x,y,z</sub>	sensitivity in free space
ConvF	sensitivity in TSL / NORM <sub>x,y,z</sub>
DCP	diode compression point
CF	crest factor (1/duty_cycle) of the RF signal
A,B,C,D	modulation dependent linearization parameters
Polarization $\Phi$	$\Phi$ rotation around probe axis
Polarization $\theta$	$\theta$ rotation around an axis that is in the plane normal to probe axis (at measurement center), $\theta=0$ is normal to probe axis

Connector Angle information used in DASY system to align probe sensor X to the robot coordinate system

**Calibration is Performed According to the Following Standards:**

- a) IEEE Std 1528-2013, "IEEE Recommended Practice for Determining the Peak Spatial-Averaged Specific Absorption Rate (SAR) in the Human Head from Wireless Communications Devices: Measurement Techniques", June 2013
- b) IEC 62209-1, "Procedure to measure the Specific Absorption Rate (SAR) for hand-held devices used in close proximity to the ear (frequency range of 300MHz to 3GHz)", February 2005

**Methods Applied and Interpretation of Parameters:**

- **NORM<sub>x,y,z</sub>:** Assessed for E-field polarization  $\theta=0$  ( $f \leq 900\text{MHz}$  in TEM-cell;  $f > 1800\text{MHz}$ : waveguide). NORM<sub>x,y,z</sub> are only intermediate values, i.e., the uncertainties of NORM<sub>x,y,z</sub> does not effect the  $E^2$ -field uncertainty inside TSL (see below ConvF).
- **NORM(f)<sub>x,y,z</sub> = NORM<sub>x,y,z</sub> \* frequency\_response** (see Frequency Response Chart). This linearization is implemented in DASY4 software versions later than 4.2. The uncertainty of the frequency response is included in the stated uncertainty of ConvF.
- **DCP<sub>x,y,z</sub>:** DCP are numerical linearization parameters assessed based on the data of power sweep (no uncertainty required). DCP does not depend on frequency nor media.
- **PAR:** PAR is the Peak to Average Ratio that is not calibrated but determined based on the signal characteristics.
- **A<sub>x,y,z</sub>; B<sub>x,y,z</sub>; C<sub>x,y,z</sub>; VR<sub>x,y,z</sub>; A,B,C** are numerical linearization parameters assessed based on the data of power sweep for specific modulation signal. The parameters do not depend on frequency nor media. VR is the maximum calibration range expressed in RMS voltage across the diode.
- **ConvF and Boundary Effect Parameters:** Assessed in flat phantom using E-field (or Temperature Transfer Standard for  $f \leq 800\text{MHz}$ ) and inside waveguide using analytical field distributions based on power measurements for  $f > 800\text{MHz}$ . The same setups are used for assessment of the parameters applied for boundary compensation (alpha, depth) of which typical uncertainty valued are given. These parameters are used in DASY4 software to improve probe accuracy close to the boundary. The sensitivity in TSL corresponds to NORM<sub>x,y,z</sub> \* ConvF whereby the uncertainty corresponds to that given for ConvF. A frequency dependent ConvF is used in DASY version 4.4 and higher which allows extending the validity from  $\pm 50\text{MHz}$  to  $\pm 100\text{MHz}$ .
- **Spherical isotropy (3D deviation from isotropy):** in a field of low gradients realized using a flat phantom exposed by a patch antenna.
- **Sensor Offset:** The sensor offset corresponds to the offset of virtual measurement center from the probe tip (on probe axis). No tolerance required.
- **Connector Angle:** The angle is assessed using the information gained by determining the NORM<sub>x</sub> (no uncertainty required).



Add: No.51 Xueyuan Road, Haidian District, Beijing, 100191, China  
Tel: +86-10-62304633-2079 Fax: +86-10-62304633-2504  
E-mail: cttl@chinantl.com Http://www.chinantl.cn

# Probe EX3DV4

## SN: 3767

Calibrated: January 30, 2015

Calibrated for DASY/EASY Systems

(Note: non-compatible with DASY2 system!)



Add: No.51 Xueyun Road, Haidian District, Beijing, 100191, China  
 Tel: +86-10-62304633-2079 Fax: +86-10-62304633-2504  
 E-mail: cttl@chinattl.com Http://www.chinattl.cn

### DASY/EASY – Parameters of Probe: EX3DV4 – SN: 3767

#### Basic Calibration Parameters

	Sensor X	Sensor Y	Sensor Z	Unc (k=2)
Norm( $\mu V/(V/m)^2$ ) <sup>A</sup>	0.56	0.57	0.47	±10.8%
DCP(mV) <sup>B</sup>	102.2	97.8	103.3	

#### Modulation Calibration Parameters

UID	Communication System Name		A dB	B dB $\mu V$	C	D dB	VR mV	Unc <sup>E</sup> (k=2)
0	CW	X	0.0	0.0	1.0	0.00	202.6	±3.3%
		Y	0.0	0.0	1.0		204.8	
		Z	0.0	0.0	1.0		187.8	

The reported uncertainty of measurement is stated as the standard uncertainty of Measurement multiplied by the coverage factor k=2, which for a normal distribution Corresponds to a coverage probability of approximately 95%.

<sup>A</sup> The uncertainties of Norm X, Y, Z do not affect the E<sup>2</sup>-field uncertainty inside TSL (see Page 5 and Page 6).

<sup>B</sup> Numerical linearization parameter; uncertainty not required.

<sup>E</sup> Uncertainty is determined using the max. deviation from linear response applying rectangular distribution and is expressed for the square of the field value.





In Collaboration with  
 Add: No.51 Xueyuan Road, Haidian District, Beijing, 100191, China  
 Tel: +86-10-62304633-2079 Fax: +86-10-62304633-2504  
 E-mail: ttl@chinattl.com Http://www.chinattl.cn

### DASY/EASY – Parameters of Probe: EX3DV4 – SN: 3767

#### Calibration Parameter Determined in Head Tissue Simulating Media

f [MHz] <sup>Ⓐ</sup>	Relative Permittivity <sup>Ⓕ</sup>	Conductivity (S/m) <sup>Ⓕ</sup>	ConvF X	ConvF Y	ConvF Z	Alpha <sup>Ⓒ</sup>	Depth <sup>Ⓒ</sup> (mm)	Unct. (k=2)
750	41.9	0.89	9.79	9.79	9.79	0.22	0.99	±12%
835	41.5	0.90	9.27	9.27	9.27	0.14	1.33	±12%
900	41.5	0.97	9.13	9.13	9.13	0.16	1.22	±12%
1450	40.5	1.20	8.77	8.77	8.77	0.58	0.70	±12%
1750	40.1	1.37	8.20	8.20	8.20	0.25	0.98	±12%
1900	40.0	1.40	7.91	7.91	7.91	0.17	1.30	±12%
2000	40.0	1.40	7.65	7.65	7.65	0.15	1.80	±12%
2450	39.2	1.80	7.18	7.18	7.18	0.53	0.71	±12%
2600	39.0	1.96	7.02	7.02	7.02	0.69	0.63	±12%
5200	36.0	4.66	5.44	5.44	5.44	0.50	1.00	±13%
5300	35.9	4.76	5.09	5.09	5.09	0.43	1.08	±13%
5500	35.6	4.96	4.83	4.83	4.83	0.55	1.03	±13%
5600	35.5	5.07	4.73	4.73	4.73	0.52	1.09	±13%
5800	35.3	5.27	4.65	4.65	4.65	0.50	1.15	±13%

<sup>Ⓐ</sup> Frequency validity of ±100MHz only applies for DASY v4.4 and higher (Page 2), else it is restricted to ±50MHz. The uncertainty is the RSS of ConvF uncertainty at calibration frequency and the uncertainty for the indicated frequency band.

<sup>Ⓕ</sup> At frequency below 3 GHz, the validity of tissue parameters ( $\epsilon$  and  $\sigma$ ) can be relaxed to ±10% if liquid compensation formula is applied to measured SAR values. At frequencies above 3 GHz, the validity of tissue parameters ( $\epsilon$  and  $\sigma$ ) is restricted to ±5%. The uncertainty is the RSS of the ConvF uncertainty for indicated target tissue parameters.

<sup>Ⓒ</sup> Alpha/Depth are determined during calibration. SPEAG warrants that the remaining deviation due to the boundary effect after compensation is always less than ± 1% for frequencies below 3 GHz and below ± 2% for the frequencies between 3-6 GHz at any distance larger than half the probe tip diameter from the boundary.



In Collaboration with  
 Add: No.51 Xueyuan Road, Haidian District, Beijing, 100191, China  
 Tel: +86-10-62304633-2079 Fax: +86-10-62304633-2504  
 E-mail: cttl@chinattl.com Http://www.chinattl.cn

### DASY/EASY – Parameters of Probe: EX3DV4 – SN: 3767

#### Calibration Parameter Determined in Body Tissue Simulating Media

f [MHz] <sup>C</sup>	Relative Permittivity <sup>F</sup>	Conductivity (S/m) <sup>F</sup>	ConvF X	ConvF Y	ConvF Z	Alpha <sup>G</sup>	Depth <sup>G</sup> (mm)	Unct. (k=2)
750	55.5	0.96	9.67	9.67	9.67	0.15	1.46	±12%
835	55.2	0.97	9.66	9.66	9.66	0.18	1.35	±12%
900	55.0	1.05	9.32	9.32	9.32	0.22	1.15	±12%
1450	54.0	1.30	8.22	8.22	8.22	0.11	1.61	±12%
1750	53.4	1.49	7.77	7.77	7.77	0.12	1.87	±12%
1900	53.3	1.52	7.58	7.58	7.58	0.17	1.39	±12%
2000	53.3	1.52	7.80	7.80	7.80	0.14	1.99	±12%
2450	52.7	1.95	7.35	7.35	7.35	0.31	1.19	±12%
2600	52.5	2.16	7.26	7.26	7.26	0.36	1.00	±12%
5200	49.0	5.30	4.98	4.98	4.98	0.52	1.08	±13%
5300	48.9	5.42	4.73	4.73	4.73	0.56	1.00	±13%
5500	48.6	5.65	4.35	4.35	4.35	0.52	1.26	±13%
5600	48.5	5.77	4.25	4.25	4.25	0.56	1.27	±13%
5800	48.2	6.00	4.33	4.33	4.33	0.44	1.28	±13%

<sup>C</sup> Frequency validity of ±100MHz only applies for DASY v4.4 and higher (Page 2), else it is restricted to ±50MHz. The uncertainty is the RSS of ConvF uncertainty at calibration frequency and the uncertainty for the indicated frequency band.

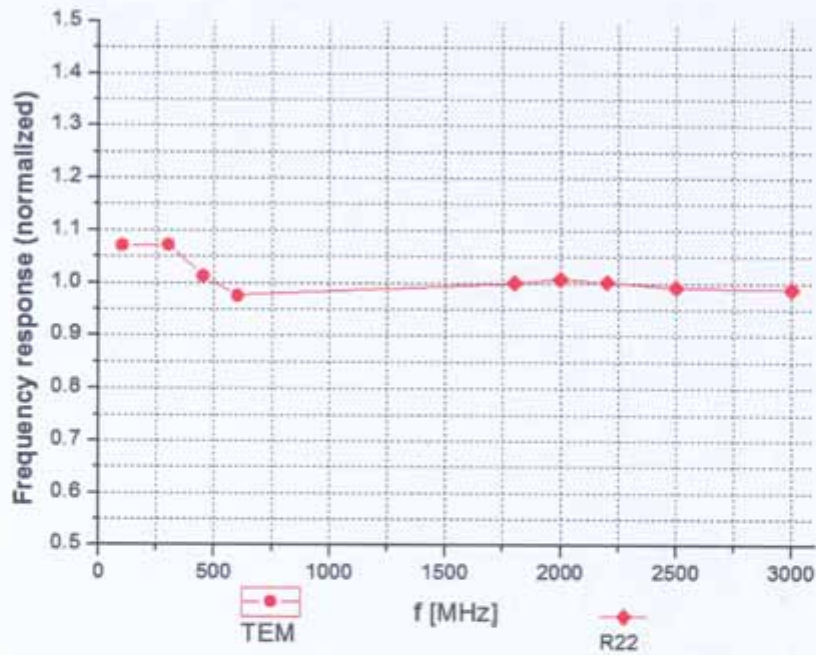
<sup>F</sup> At frequency below 3 GHz, the validity of tissue parameters ( $\epsilon$  and  $\sigma$ ) can be relaxed to ±10% if liquid compensation formula is applied to measured SAR values. At frequencies above 3 GHz, the validity of tissue parameters ( $\epsilon$  and  $\sigma$ ) is restricted to ±5%. The uncertainty is the RSS of the ConvF uncertainty for indicated target tissue parameters.

<sup>G</sup> Alpha/Depth are determined during calibration. SPEAG warrants that the remaining deviation due to the boundary effect after compensation is always less than ± 1% for frequencies below 3 GHz and below ± 2% for the frequencies between 3-6 GHz at any distance larger than half the probe tip diameter from the boundary.

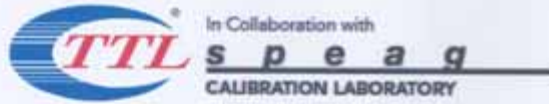


Add: No.51 Xueyuan Road, Haidian District, Beijing, 100191, China  
 Tel: +86-10-62304633-2079 Fax: +86-10-62304633-2504  
 E-mail: cttl@chinattl.com Http://www.chinattl.cn

### Frequency Response of E-Field (TEM-Cell: ifi110 EXX, Waveguide: R22)



Uncertainty of Frequency Response of E-field:  $\pm 7.5\%$  (k=2)

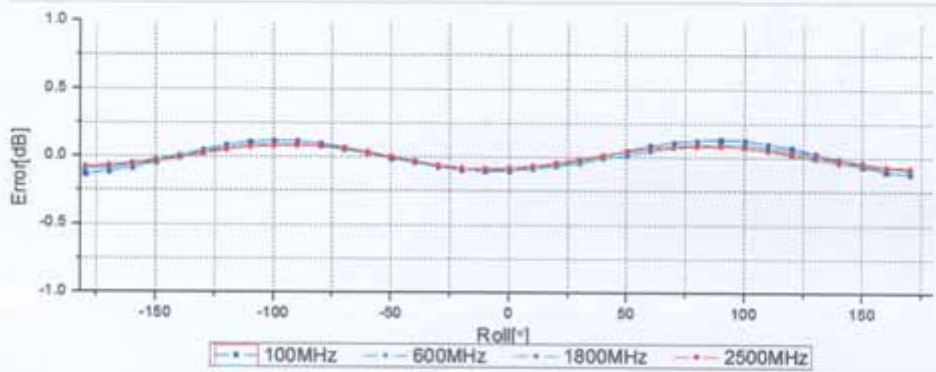
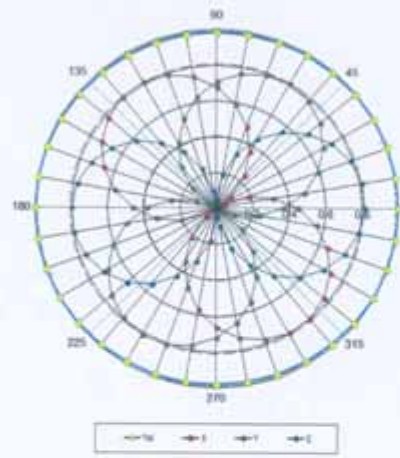
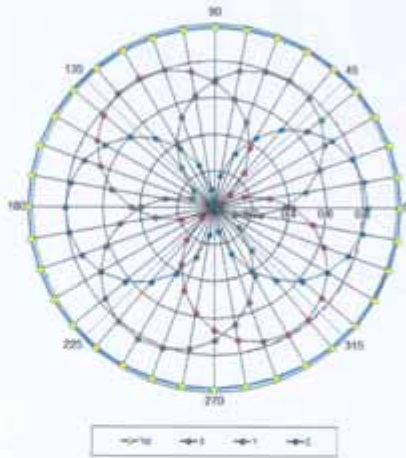


Add: No.51 Xueyuan Road, Haidian District, Beijing, 100191, China  
Tel: +86-10-62304633-2079 Fax: +86-10-62304633-2504  
E-mail: ttl@chinantl.com Http://www.chinantl.cn

Receiving Pattern ( $\Phi$ ),  $\theta=0^\circ$

f=600 MHz, TEM

f=1800 MHz, R22



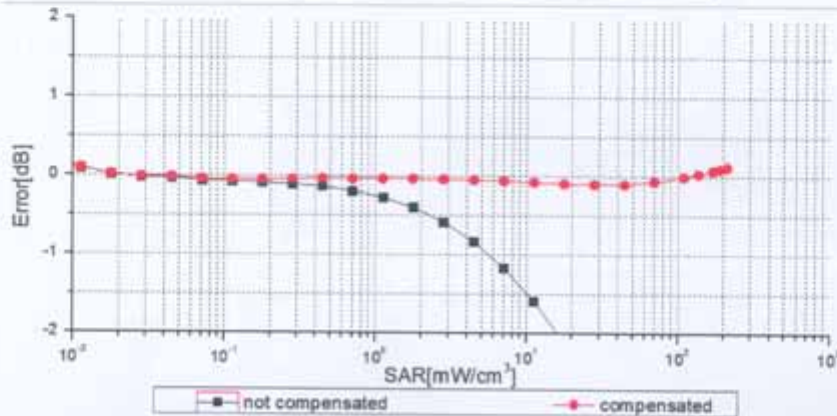
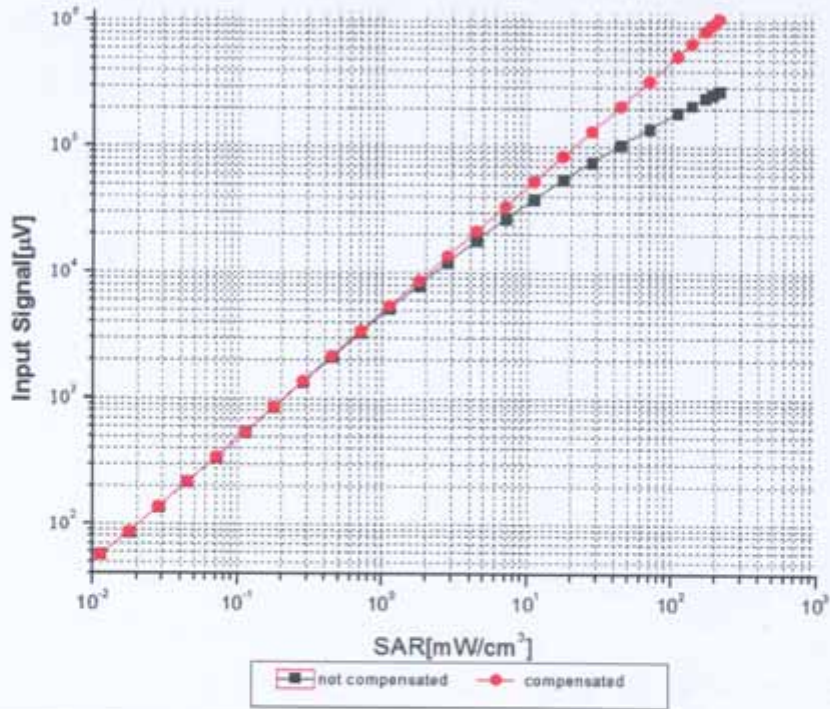
Uncertainty of Axial Isotropy Assessment:  $\pm 0.9\%$  (k=2)



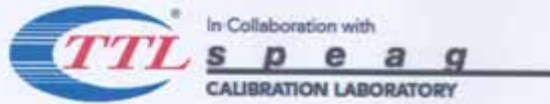


Add: No.51 Xueyuan Road, Haidian District, Beijing, 100191, China  
Tel: +86-10-62304633-2079 Fax: +86-10-62304633-2504  
E-mail: cttl@chinattl.com Http://www.chinattl.cn

### Dynamic Range f(SAR<sub>head</sub>) (TEM cell, f = 900 MHz)



Uncertainty of Linearity Assessment: ±0.9% (k=2)

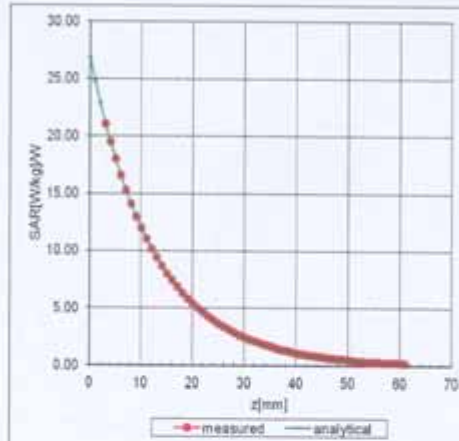
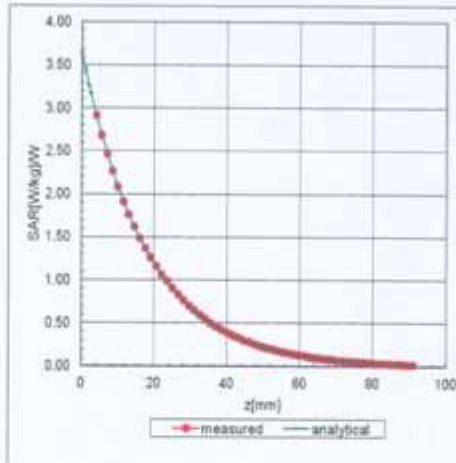


Add: No.51 Xueyuan Road, Haidian District, Beijing, 100191, China  
Tel: +86-10-62304633-2079 Fax: +86-10-62304633-2504  
E-mail: cttl@chinattl.com Http://www.chinattl.cn

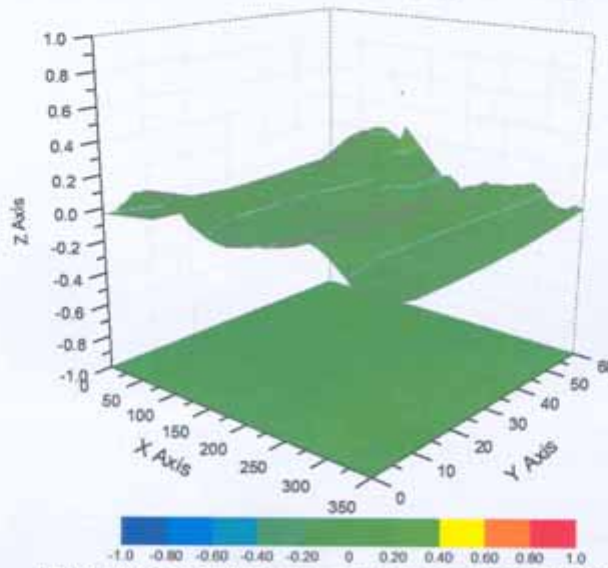
### Conversion Factor Assessment

f=900 MHz, WGLS R9(H\_convF)

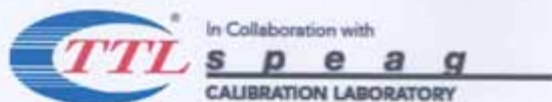
f=1750 MHz, WGLS R22(H\_convF)



### Deviation from Isotropy in Liquid



Uncertainty of Spherical Isotropy Assessment:  $\pm 2.8\%$  (K=2)



Add: No.51 Xueyuan Road, Haidian District, Beijing, 100191, China  
Tel: +86-10-62304633-2079 Fax: +86-10-62304633-2504  
E-mail: cttl@chinattl.com Http://www.chinattl.cn

## DASY/EASY – Parameters of Probe: EX3DV4 – SN: 3767

### Other Probe Parameters

Sensor Arrangement	Triangular
Connector Angle (°)	145.7
Mechanical Surface Detection Mode	enabled
Optical Surface Detection Mode	disable
Probe Overall Length	337mm
Probe Body Diameter	10mm
Tip Length	9mm
Tip Diameter	2.5mm
Probe Tip to Sensor X Calibration Point	1mm
Probe Tip to Sensor Y Calibration Point	1mm
Probe Tip to Sensor Z Calibration Point	1mm
Recommended Measurement Distance from Surface	1.4mm



In Collaboration with  
**s p e a g**  
CALIBRATION LABORATORY



Add: No 52 Huayuanbei Road, Haidian District, Beijing, 100191, China  
Tel: +86-10-62304633-2079 Fax: +86-10-62304633-2504  
E-mail: info@emcrite.com <http://www.emcrite.com>

Client **Auden**

Certificate No: **Z14-97048**

### CALIBRATION CERTIFICATE

Object: **D2450V2 - SN: 862**

Calibration Procedure(s):  
**TMC-05-E-02-194**  
Calibration procedure for dipole validation kits




Calibration date: **May 29, 2014**

This calibration Certificate documents the traceability to national standards, which realize the physical units of measurements(SI). The measurements and the uncertainties with confidence probability are given on the following pages and are part of the certificate.

All calibrations have been conducted in the closed laboratory facility, environment temperature(22±3)°C and humidity<70%.

Calibration Equipment used (M&TE critical for calibration)

Primary Standards	ID #	Cal Date(Calibrated by, Certificate No.)	Scheduled Calibration
Power Meter NRVD	102083	11-Sep-13 (TMC, No. JZ13-443)	Sep-14
Power sensor NRV-Z5	106595	11-Sep-13 (TMC, No. JZ13-443)	Sep-14
Reference Probe EX3DV4 DAE4	SN 3846	3- Sep-13 (SPEAG, No EX3-3846_Sep13)	Sep-14
	SN 1331	23-Jan-14 (SPEAG, DAE4-1331_Jan14)	Jan-15
Signal Generator E4438C	MY49070393	13-Nov-13 (TMC, No. JZ13-394)	Nov-14
Network Analyzer E8362B	MY43021135	19-Oct-13 (TMC, No. JZ13-278)	Oct-14

	Name	Function	Signature
Calibrated by	Yu Zongying	SAR Test Engineer	
Reviewed by	Qi Dianyuan	SAR Project Leader	
Approved by	Lu Bingsong	Deputy Director of the laboratory	

Issued: May 30, 2014

This calibration certificate shall not be reproduced except in full without written approval of the laboratory.



Add: No.52 Huiyuanbei Road, Haidian District, Beijing, 100191, China  
Tel: +86-10-62304633-2079 Fax: +86-10-62304633-2504  
E-mail: info@emcits.com <http://www.emcits.com>

**Glossary:**

TSL	tissue simulating liquid
ConvF	sensitivity in TSL / NORM <sub>x,y,z</sub>
N/A	not applicable or not measured

**Calibration is Performed According to the Following Standards:**

- IEEE Std 1528-2013, "IEEE Recommended Practice for Determining the Peak Spatial-Averaged Specific Absorption Rate (SAR) in the Human Head from Wireless Communications Devices: Measurement Techniques", June 2013
- IEC 62209-1, "Procedure to measure the Specific Absorption Rate (SAR) For hand-held devices used in close proximity to the ear (frequency range of 300MHz to 3GHz)", February 2005
- KDB865664, SAR Measurement Requirements for 100 MHz to 6 GHz

**Additional Documentation:**

- DASY4/5 System Handbook

**Methods Applied and Interpretation of Parameters:**

- Measurement Conditions:** Further details are available from the Validation Report at the end of the certificate. All figures stated in the certificate are valid at the frequency indicated.
- Antenna Parameters with TSL:** The dipole is mounted with the spacer to position its feed point exactly below the center marking of the flat phantom section, with the arms oriented parallel to the body axis.
- Feed Point Impedance and Return Loss:** These parameters are measured with the dipole positioned under the liquid filled phantom. The impedance stated is transformed from the measurement at the SMA connector to the feed point. The Return Loss ensures low reflected power. No uncertainty required.
- Electrical Delay:** One-way delay between the SMA connector and the antenna feed point. No uncertainty required.
- SAR measured:** SAR measured at the stated antenna input power.
- SAR normalized:** SAR as measured, normalized to an input power of 1 W at the antenna connector.
- SAR for nominal TSL parameters:** The measured TSL parameters are used to calculate the nominal SAR result.

The reported uncertainty of measurement is stated as the standard uncertainty of Measurement multiplied by the coverage factor  $k=2$ , which for a normal distribution corresponds to a coverage probability of approximately 95%.



In Collaboration with  
**s p e a g**  
CALIBRATION LABORATORY

Add: No 52 Huayuanbei Road, Haidian District, Beijing, 100191, China  
Tel: +86-10-62304633-2079 Fax: +86-10-62304633-2804  
E-mail: info@emcsl.com <http://www.emcsl.com>

### Measurement Conditions

DASY system configuration, as far as not given on page 1:

DASY Version	DASY52	52.8.8.1222
Extrapolation	Advanced Extrapolation	
Phantom	Twin Phantom	
Distance Dipole Center - TSL	10 mm	with Spacer
Zoom Scan Resolution	dx, dy, dz = 5 mm	
Frequency	2450 MHz ± 1 MHz	

### Head TSL parameters

The following parameters and calculations were applied:

	Temperature	Permittivity	Conductivity
Nominal Head TSL parameters	22.0 °C	39.2	1.8 mho/m
Measured Head TSL parameters	(22.0 ± 0.2) °C	38.5 ± 6 %	1.82 mho/m ± 6 %
Head TSL temperature change during test	<1.0 °C	—	—

### SAR result with Head TSL

SAR averaged over 1 $\text{cm}^3$ (1 g) of Head TSL	Condition	
SAR measured	250 mW input power	13.4 mW / g
SAR for nominal Head TSL parameters	normalized to 1W	63.1 mW / g ± 20.8 % (k=2)
SAR averaged over 10 $\text{cm}^3$ (10 g) of Head TSL	Condition	
SAR measured	250 mW input power	6.35 mW / g
SAR for nominal Head TSL parameters	normalized to 1W	25.3 mW / g ± 20.4 % (k=2)

### Body TSL parameters

The following parameters and calculations were applied:

	Temperature	Permittivity	Conductivity
Nominal Body TSL parameters	22.0 °C	52.7	1.95 mho/m
Measured Body TSL parameters	(22.0 ± 0.2) °C	52.2 ± 6 %	1.94 mho/m ± 6 %
Body TSL temperature change during test	<1.0 °C	—	—

### SAR result with Body TSL

SAR averaged over 1 $\text{cm}^3$ (1 g) of Body TSL	Condition	
SAR measured	250 mW input power	12.6 mW / g
SAR for nominal Body TSL parameters	normalized to 1W	50.4 mW / g ± 20.8 % (k=2)
SAR averaged over 10 $\text{cm}^3$ (10 g) of Body TSL	Condition	
SAR measured	250 mW input power	5.99 mW / g
SAR for nominal Body TSL parameters	normalized to 1W	24.0 mW / g ± 20.4 % (k=2)



In Collaboration with  
**s p e a g**  
 CALIBRATION LABORATORY

Add: No.52 Huayuanbei Road, Haidian District, Beijing, 100191, China  
 Tel: +86-10-62304633-2079 Fax: +86-10-62304633-2504  
 E-mail: info@emc08.com http://www.emc08.com

**Appendix**

**Antenna Parameters with Head TSL**

Impedance, transformed to feed point	48.60- 6.07jΩ
Return Loss	- 24.0dB

**Antenna Parameters with Body TSL**

Impedance, transformed to feed point	52.10- 6.08jΩ
Return Loss	- 24.0dB

**General Antenna Parameters and Design**

Electrical Delay (one direction)	1.346 ns
----------------------------------	----------

After long term use with 100W radiated power, only a slight warming of the dipole near the feedpoint can be measured.

The dipole is made of standard semirigid coaxial cable. The center conductor of the feeding line is directly connected to the second arm of the dipole. The antenna is therefore short-circuited for DC-signals. On some of the dipoles, small end caps are added to the dipole arms in order to improve matching when loaded according to the position as explained in the "Measurement Conditions" paragraph. The SAR data are not affected by this change. The overall dipole length is still according to the Standard.

No excessive force must be applied to the dipole arms, because they might bend or the soldered connections near the feedpoint may be damaged.

**Additional EUT Data**

Manufactured by	SPEAG
-----------------	-------





In Collaboration with  
**s p e a g**  
 CALIBRATION LABORATORY

Add: No.52 Huayuanbei Road, Haidian District, Beijing, 100191, China  
 Tel: +86-10-82304633-2079 Fax: +86-10-82304633-2504  
 E-mail: info@emcslab.com http://www.emcslab.com

**DASY5 Validation Report for Head TSL**

Date: 27.05.2014

Test Laboratory: TMC, Beijing, China

DUT: Dipole 2450 MHz D2450V2; Type: D2450V2; Serial: D2450V2 - SN: 862

Communication System: UID 0, CW; Frequency: 2450 MHz; Duty Cycle: 1:1

Medium parameters used:  $f = 2450$  MHz;  $\sigma = 1.819$  S/m;  $\epsilon_r = 38.51$ ;  $\rho = 1000$  kg/m<sup>3</sup>

Phantom section: Flat Section

Measurement Standard: DASY5 (IEEE/IEC/ANSI C63.19-2007)

**DASY5 Configuration:**

- Probe: EX3DV4 - SN3846; ConvF(6.78, 6.78, 6.78); Calibrated: 2013-09-03;
- Sensor-Surface: 2mm (Mechanical Surface Detection)
- Electronics: DAF4 Sn1331; Calibrated: 2014-01-23
- Phantom: EL1 4.0; Type: QDOVA001BA; Serial: xxxx
- Measurement SW: DASY52, Version 52.8 (8); SEMCAD X Version 14.6.10 (7331)

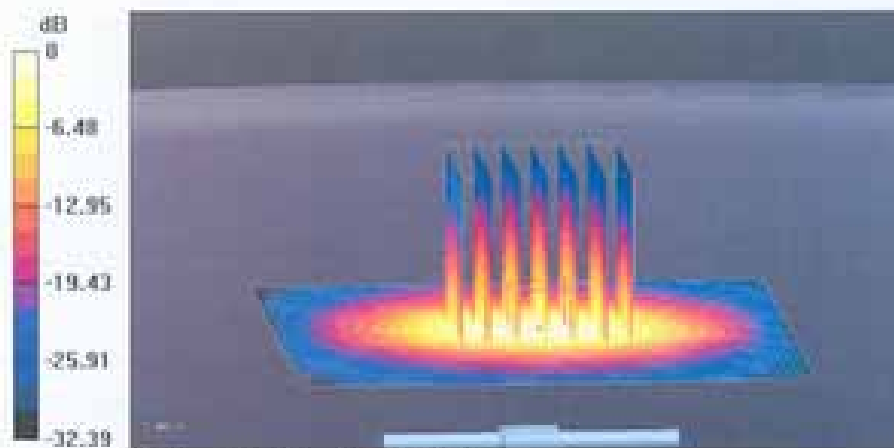
System Performance Check at Frequencies above 1 GHz/d=10mm, Pin=xx mW, dist=2.0mm (EX-Probe)/Zoom Scan (7x7x7) (7x7x7)/Cube 0: Measurement grid: dx=5mm, dy=5mm, dz=5mm

Reference Value = 106.6 V/m; Power Drift = 0.01 dB

Peak SAR (extrapolated) = 26.8 W/kg

SAR(1 g) = 13.4 W/kg; SAR(10 g) = 6.35 W/kg

Maximum value of SAR (measured) = 20.1 W/kg



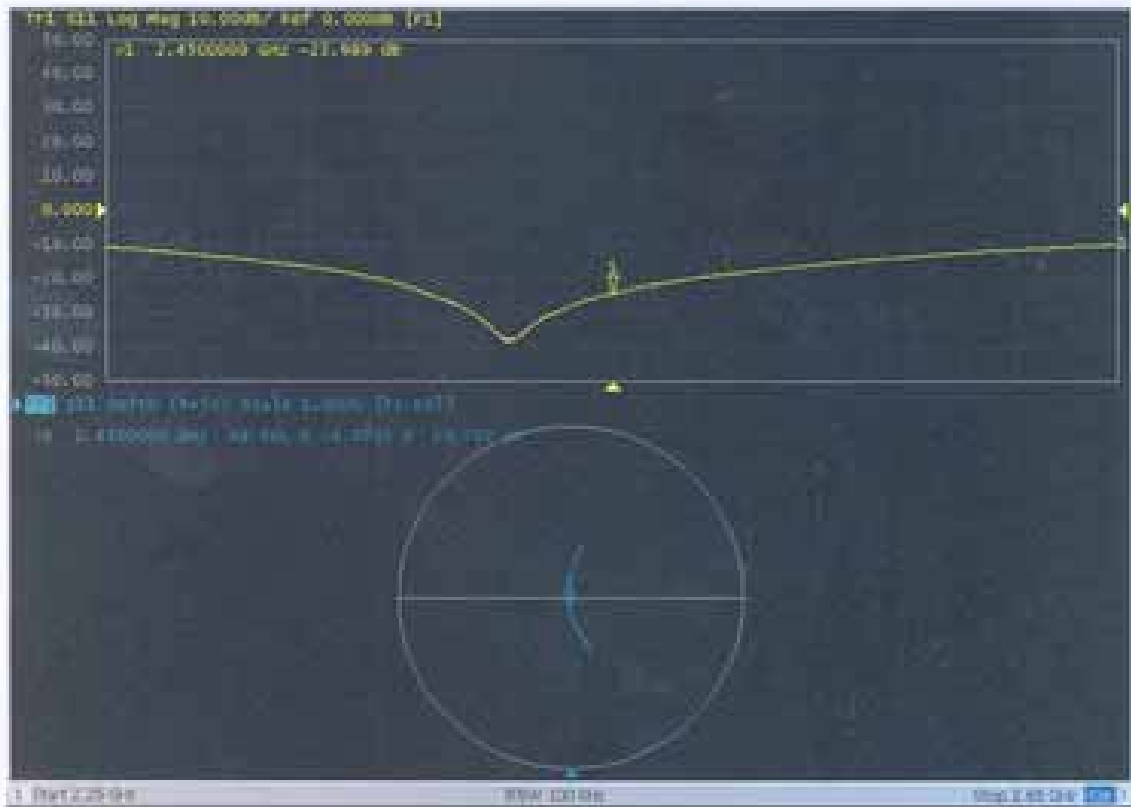
0 dB = 19.6 W/kg = 12.93 dBW/kg





Add: No.52 Huayuanbei Road, Haidian District, Beijing, 100191, China  
Tel: +86-10-82304633-2079 Fax: +86-10-82304633-2504  
E-mail: info@emcife.com <http://www.emcife.com>

**Impedance Measurement Plot for Head TSL**





Add: No 52 Huiyuanbei Road, Haidian District, Beijing, 100191, China  
 Tel: +86-10-62504633-2079 Fax: +86-10-62504633-2504  
 E-mail: info@semco.com http://www.semco.com

**DASY5 Validation Report for Body TSL**

Date: 28.05.2014

Test Laboratory: TMC, Beijing, China

DUT: Dipole 2450 MHz D2450V2; Type: D2450V2; Serial: D2450V2 - SN: 862

Communication System: UID 0, CW; Frequency: 2450 MHz; Duty Cycle: 1:1

Medium parameters used:  $f = 2450$  MHz;  $\sigma = 1.94$  S/m;  $\epsilon_r = 52.5$ ;  $\rho = 1000$  kg/m<sup>3</sup>

Phantom section: Flat Section

Measurement Standard: DASY5 (IEEE/IEC/ANSI C63.19-2007)

**DASY5 Configuration:**

- Probe: EX3DV4 - SN3846; ConvF(6,73, 6,73, 6,73); Calibrated: 2013-09-03;
- Sensor-Surface: 2mm (Mechanical Surface Detection)
- Electronics: DAE4 Sn1331; Calibrated: 2014-01-23
- Phantom: ELI 4.0; Type: QDOVA001BA; Serial: xxxx
- Measurement SW: DASY52, Version 52.8 (8); SEMCAD X Version 14.6.10 (7331)

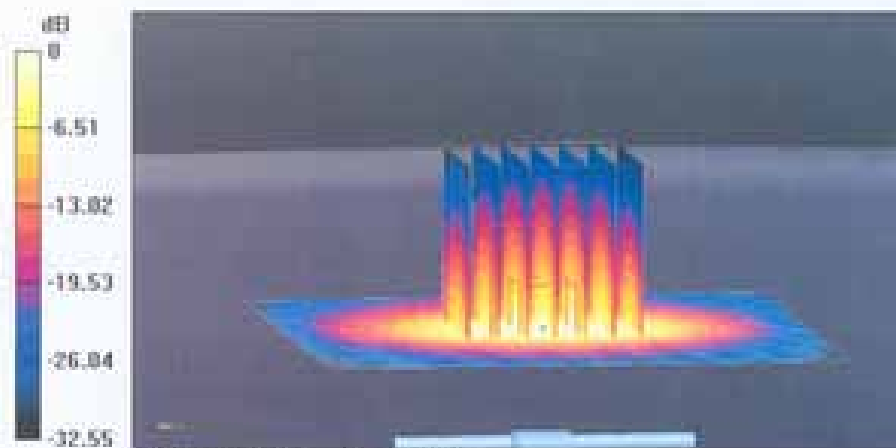
System Performance Check at Frequencies above 1 GHz/d=10mm, Pin=xx mW,  
 dist=2.0mm (EX-Probe)/Zoom Scan (7x7x7) (7x7x7)/Cube 0; Measurement grid:  
 dx=5mm, dy=5mm, dz=5mm

Reference Value = 99.55 V/m; Power Drift = -0.00 dB

Peak SAR (extrapolated) = 25.2 W/kg

SAR(1 g) = 12.6 W/kg; SAR(10 g) = 5.99 W/kg

Maximum value of SAR (measured) = 19.0 W/kg

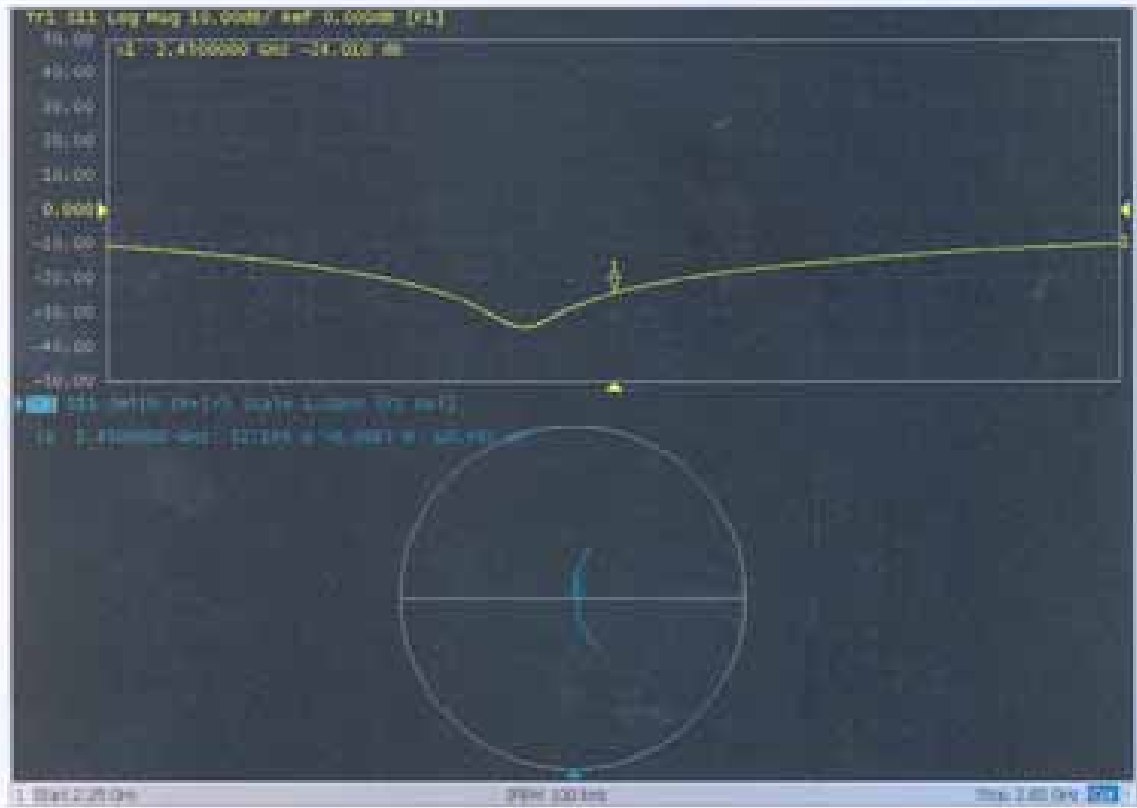


0 dB = 18.1 W/kg = 12.58 dBW/kg



Add: No.52 Huayuanbei Road, Haidian District, Beijing, 100191, China  
Tel: +86-10-82304833-2079 Fax: +86-10-82304833-2504  
E-mail: info@emcsl.com <http://www.emcsl.com>

Impedance Measurement Plot for Body TSL





Add: No.51 Xueyuan Road, Haidian District, Beijing, 100191, China  
 Tel: +86-10-62304633-2079 Fax: +86-10-62304633-2504  
 E-mail: cttl@chinattl.com <http://www.chinattl.cn>



Client **Audix**

Certificate No: **Z15-97002**

**CALIBRATION CERTIFICATE**

Object **D5GHZV2 - SN: 1102**

Calibration Procedure(s) **TMC-OS-E-02-194  
 Calibration Procedures for dipole validation kits**



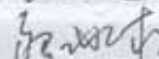
Calibration date: **January 29, 2015**

This calibration Certificate documents the traceability to national standards, which realize the physical units of measurements(SI). The measurements and the uncertainties with confidence probability are given on the following pages and are part of the certificate.

All calibrations have been conducted in the closed laboratory facility: environment temperature(22±3)℃ and humidity<70%.

Calibration Equipment used (M&TE critical for calibration)

Primary Standards	ID #	Cal Date(Calibrated by, Certificate No.)	Scheduled Calibration
Power Meter NRVD	102083	16-Sep-14 (TMC, No.J14X03421)	Sep -15
Power sensor NRV-25	100595	16-Sep-14 (TMC, No. J14X03421)	Sep -15
ReferenceProbe EX3DV4	SN 3846	24-Sep-14(SPEAG, No.EX3-3846_Sep14)	Sep -15
DAE3	SN 536	20-Jan-15 (CTTL-SPEAG, No.Z15-97012)	Jan -16
Secondary Standards	ID #	Cal Date(Calibrated by, Certificate No.)	Scheduled Calibration
Signal Generator E4438C	MY49071430	10-Feb-14 (TMC, No.JZ14-808)	Feb-15
NetworkAnalyzer E5071C	MY4614d0113	15-Feb-14 (TMC, No.JZ14-781)	Feb-15

	Name	Function	Signature
Calibrated by:	Zhao Jing	SAR Test Engineer	
Reviewed by:	Qi Dianyuan	SAR Project Leader	
Approved by:	Lu Bingsong	Deputy Director of the laboratory	

Issued: January 31, 2015

This calibration certificate shall not be reproduced except in full without written approval of the laboratory.



In Collaboration with  
**s p e a g**  
CALIBRATION LABORATORY

Add: No.51 Xueyuan Road, Haidian District, Beijing, 100191, China  
Tel: +86-10-62304633-2079 Fax: +86-10-62304633-2504  
E-mail: cttl@chinattl.com Http://www.chinattl.cn

**Glossary:**

TSL	tissue simulating liquid
ConvF	sensitivity in TSL / NORM <sub>x,y,z</sub>
N/A	not applicable or not measured

**Calibration is Performed According to the Following Standards:**

- IEEE Std 1528-2013, "IEEE Recommended Practice for Determining the Peak Spatial-Averaged Specific Absorption Rate (SAR) in the Human Head from Wireless Communications Devices: Measurement Techniques", June 2013
- IEC 62209-2, "Evaluation of Human Exposure to Radio Frequency Field from Handheld and Body-Mounted Wireless Communication Devices in the Frequency Range of 30 MHz to 6GHz: Human models, Instrumentation, and Procedures"; Part 2: "Procedure to determine the Specific Absorption Rate (SAR) for including accessories and multiple transmitters", March 2010
- KDB865664, SAR Measurement Requirements for 100 MHz to 6 GHz

**Additional Documentation:**

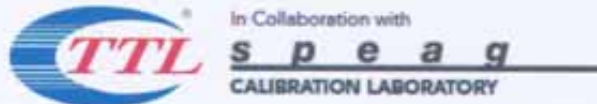
- DASY4/5 System Handbook

**Methods Applied and Interpretation of Parameters:**

- Measurement Conditions:** Further details are available from the Validation Report at the end of the certificate. All figures stated in the certificate are valid at the frequency indicated.
- Antenna Parameters with TSL:** The dipole is mounted with the spacer to position its feed point exactly below the center marking of the flat phantom section, with the arms oriented parallel to the body axis.
- Feed Point Impedance and Return Loss:** These parameters are measured with the dipole positioned under the liquid filled phantom. The impedance stated is transformed from the measurement at the SMA connector to the feed point. The Return Loss ensures low reflected power. No uncertainty required.
- Electrical Delay:** One-way delay between the SMA connector and the antenna feed point. No uncertainty required.
- SAR measured:** SAR measured at the stated antenna input power.
- SAR normalized:** SAR as measured, normalized to an input power of 1 W at the antenna connector.
- SAR for nominal TSL parameters:** The measured TSL parameters are used to calculate the nominal SAR result.

The reported uncertainty of measurement is stated as the standard uncertainty of Measurement multiplied by the coverage factor  $k=2$ , which for a normal distribution Corresponds to a coverage probability of approximately 95%.





Add: No.51 Xueyuan Road, Haidian District, Beijing, 100191, China  
 Tel: +86-10-62304633-2079 Fax: +86-10-62304633-2504  
 E-mail: cttl@chinattl.com Http://www.chinattl.cn

**Measurement Conditions**

DASY system configuration, as far as not given on page 1.

DASY Version	DASY52	52.8.8.1222
Extrapolation	Advanced Extrapolation	
Phantom	Triple Flat Phantom 5 1C	
Distance Dipole Center - TSL	10 mm	with Spacer
Zoom Scan Resolution	dx, dy = 4 mm, dz = 1.4 mm	Graded Ratio = 1.4 (Z direction)
Frequency	5300 MHz ± 1 MHz 5600 MHz ± 1 MHz	

**Head TSL parameters at 5300 MHz**

The following parameters and calculations were applied.

	Temperature	Permittivity	Conductivity
Nominal Head TSL parameters	22.0 °C	35.9	4.76 mho/m
Measured Head TSL parameters	(22.0 ± 0.2) °C	36.9 ± 6%	4.62 mho/m ± 6%
Head TSL temperature change during test	<1.0 °C	—	—

**SAR result with Head TSL at 5300 MHz**

SAR averaged over 1 cm <sup>3</sup> (1 g) of Head TSL	Condition	
SAR measured	100 mW input power	7.97 mW / g
SAR for nominal Head TSL parameters	normalized to 1W	80.1 mW /g ± 23.0 % (k=2)
SAR averaged over 10 cm <sup>3</sup> (10 g) of Head TSL	Condition	
SAR measured	100 mW input power	2.24 mW / g
SAR for nominal Head TSL parameters	normalized to 1W	22.5 mW /g ± 22.2 % (k=2)



Add: No.51 Xueyuan Road, Haidian District, Beijing, 100191, China  
 Tel: +86-10-62304633-2079 Fax: +86-10-62304633-2504  
 E-mail: cttl@chinattl.com Http://www.chinattl.cn

**Head TSL parameters at 5600 MHz**

The following parameters and calculations were applied.

	Temperature	Permittivity	Conductivity
Nominal Head TSL parameters	22.0 °C	35.5	5.07 mho/m
Measured Head TSL parameters	(22.0 ± 0.2) °C	36.5 ± 6 %	4.92 mho/m ± 6 %
Head TSL temperature change during test	<1.0 °C	—	—

**SAR result with Head TSL at 5600 MHz**

SAR averaged over 1 cm <sup>3</sup> (1 g) of Head TSL	Condition	
SAR measured	100 mW input power	8.21 mW / g
SAR for nominal Head TSL parameters	normalized to 1W	82.5 mW / g ± 23.0 % (k=2)
SAR averaged over 10 cm <sup>3</sup> (10 g) of Head TSL	Condition	
SAR measured	100 mW input power	2.32 mW / g
SAR for nominal Head TSL parameters	normalized to 1W	23.3 mW / g ± 22.2 % (k=2)

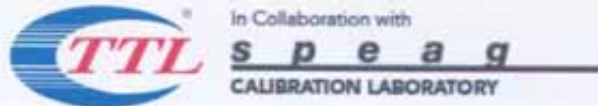
**Body TSL parameters at 5300 MHz**

The following parameters and calculations were applied.

	Temperature	Permittivity	Conductivity
Nominal Body TSL parameters	22.0 °C	48.9	5.42 mho/m
Measured Body TSL parameters	(22.0 ± 0.2) °C	48.9 ± 6 %	5.53 mho/m ± 6 %
Body TSL temperature change during test	<1.0 °C	—	—

**SAR result with Body TSL at 5300 MHz**

SAR averaged over 1 cm <sup>3</sup> (1 g) of Body TSL	Condition	
SAR measured	100 mW input power	7.77 mW / g
SAR for nominal Body TSL parameters	normalized to 1W	77.7 mW / g ± 23.0 % (k=2)
SAR averaged over 10 cm <sup>3</sup> (10 g) of Body TSL	Condition	
SAR measured	100 mW input power	2.18 mW / g
SAR for nominal Body TSL parameters	normalized to 1W	21.8 mW / g ± 22.2 % (k=2)



Add: No.51 Xueyuan Road, Haidian District, Beijing, 100191, China  
 Tel: +86-10-62304633-2079 Fax: +86-10-62304633-2504  
 E-mail: ctlt@chinattl.com Http://www.chinattl.cn

**Body TSL parameters at 5600 MHz**

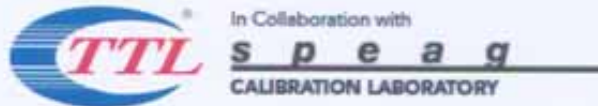
The following parameters and calculations were applied

	Temperature	Permittivity	Conductivity
Nominal Body TSL parameters	22.0 °C	48.5	5.77 mho/m
Measured Body TSL parameters	(22.0 ± 0.2) °C	48.3 ± 6 %	5.94 mho/m ± 6 %
Body TSL temperature change during test	<1.0 °C	—	—

**SAR result with Body TSL at 5600 MHz**

SAR averaged over 1 cm <sup>3</sup> (1 g) of Body TSL	Condition	
SAR measured	100 mW input power	8.05 mW / g
SAR for nominal Body TSL parameters	normalized to 1W	80.5 mW /g ± 23.0 % (k=2)
SAR averaged over 10 cm <sup>3</sup> (10 g) of Body TSL	Condition	
SAR measured	100 mW input power	2.23 mW / g
SAR for nominal Body TSL parameters	normalized to 1W	22.3 mW /g ± 22.2 % (k=2)





Add: No.51 Xueyuan Road, Haidian District, Beijing, 100191, China  
 Tel: +86-10-62304633-2079 Fax: +86-10-62304633-2504  
 E-mail: cttl@chinattl.com Http://www.chinattl.cn

**Appendix**

**Antenna Parameters with Head TSL at 5300 MHz**

Impedance, transformed to feed point	49.3Ω - 2.69jΩ
Return Loss	- 31.1dB

**Antenna Parameters with Head TSL at 5600 MHz**

Impedance, transformed to feed point	59.1Ω - 0.72jΩ
Return Loss	- 21.5dB

**Antenna Parameters with Body TSL at 5300 MHz**

Impedance, transformed to feed point	48.4Ω - 0.70jΩ
Return Loss	- 35.0dB

**Antenna Parameters with Body TSL at 5600 MHz**

Impedance, transformed to feed point	58.6Ω + 1.41jΩ
Return Loss	- 21.9dB

**General Antenna Parameters and Design**

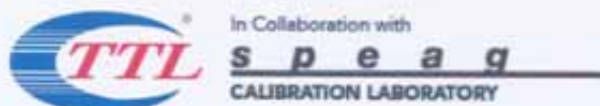
Electrical Delay (one direction)	1.107 ns
----------------------------------	----------

After long term use with 100W radiated power, only a slight warming of the dipole near the feedpoint can be measured.

The dipole is made of standard semirigid coaxial cable. The center conductor of the feeding line is directly connected to the second arm of the dipole. The antenna is therefore short-circuited for DC-signals. On some of the dipoles, small end caps are added to the dipole arms in order to improve matching when loaded according to the position as explained in the "Measurement Conditions" paragraph. The SAR data are not affected by this change. The overall dipole length is still according to the Standard. No excessive force must be applied to the dipole arms, because they might bend or the soldered connections near the feedpoint may be damaged.

**Additional EUT Data**

Manufactured by	SPEAG
-----------------	-------



Add: No.51 Xueyuan Road, Haidian District, Beijing, 100191, China  
Tel: +86-10-62304633-2079 Fax: +86-10-62304633-2504  
E-mail: ctll@chinattl.com Http://www.chinattl.cn

**DASY5 Validation Report for Head TSL**

Date: 27.01.2015

Test Laboratory: CTTL, Beijing, China

**DUT: Dipole 5GHz; Type: D5GHzV2; Serial: D5GHzV2 - SN: 1102**

Communication System: CW; Frequency: 5300 MHz, Frequency: 5600 MHz,  
Medium parameters used:  $f = 5300$  MHz;  $\sigma = 4.622$  mho/m;  $\epsilon_r = 36.93$ ;  $\rho = 1000$   
kg/m<sup>3</sup>, Medium parameters used:  $f = 5600$  MHz;  $\sigma = 4.922$  mho/m;  $\epsilon_r = 36.5$ ;  $\rho =$   
1000 kg/m<sup>3</sup>,

Phantom section: Right Section

Measurement Standard: DASY5 (IEEE/IEC/ANSI C63.19-2007)

**DASY5 Configuration:**

- Probe: EX3DV4 - SN3846; ConvF(4.79,4.79,4.79); Calibrated: 2014/9/24,  
ConvF(4.25,4.25,4.25); Calibrated: 2014/9/24,
- Sensor-Surface: 1.4mm (Mechanical Surface Detection)
- Electronics: DAE3 Sn536; Calibrated: 20/1/2015
- Phantom: Triple Flat Phantom 5.1C; Type: QD 000 P51 CA; Serial: 1161/3
- Measurement SW: DASY52, Version 52.8 (8); SEMCAD X Version 14.6.10  
(7331)

**Dipole Calibration for Head Tissue/Pin=100mW, d=10mm, f=5300 MHz/Zoom  
Scan, dist=1.4mm (8x8x7)/Cube 0: Measurement grid: dx=4mm, dy=4mm,  
dz=1.4mm**

Reference Value = 70.71 V/m; Power Drift = -0.02 dB

Peak SAR (extrapolated) = 35.3 W/kg

**SAR(1 g) = 7.97 W/kg; SAR(10 g) = 2.24 W/kg**

Maximum value of SAR (measured) = 19.9 W/kg

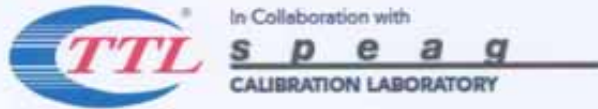
**Dipole Calibration for Head Tissue/Pin=100mW, d=10mm, f=5600 MHz/Zoom  
Scan, dist=1.4mm (8x8x7)/Cube 0: Measurement grid: dx=4mm, dy=4mm,  
dz=1.4mm**

Reference Value = 73.26 V/m; Power Drift = -0.06 dB

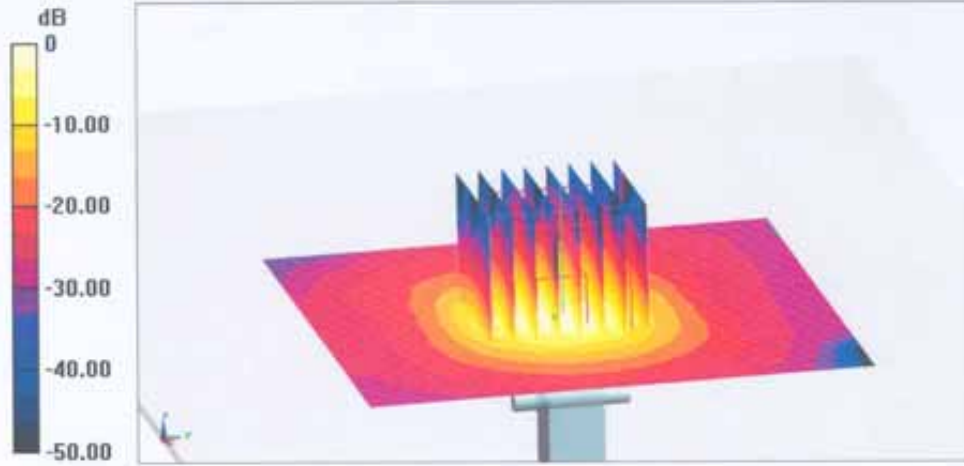
Peak SAR (extrapolated) = 35.8 W/kg

**SAR(1 g) = 8.21 W/kg; SAR(10 g) = 2.32 W/kg**

Maximum value of SAR (measured) = 20.3 W/kg



Add: No.51 Xueyuan Road, Haidian District, Beijing, 100191, China  
Tel: +86-10-62304633-2079 Fax: +86-10-62304633-2504  
E-mail: cttl@chinattl.com Http://www.chinattl.cn

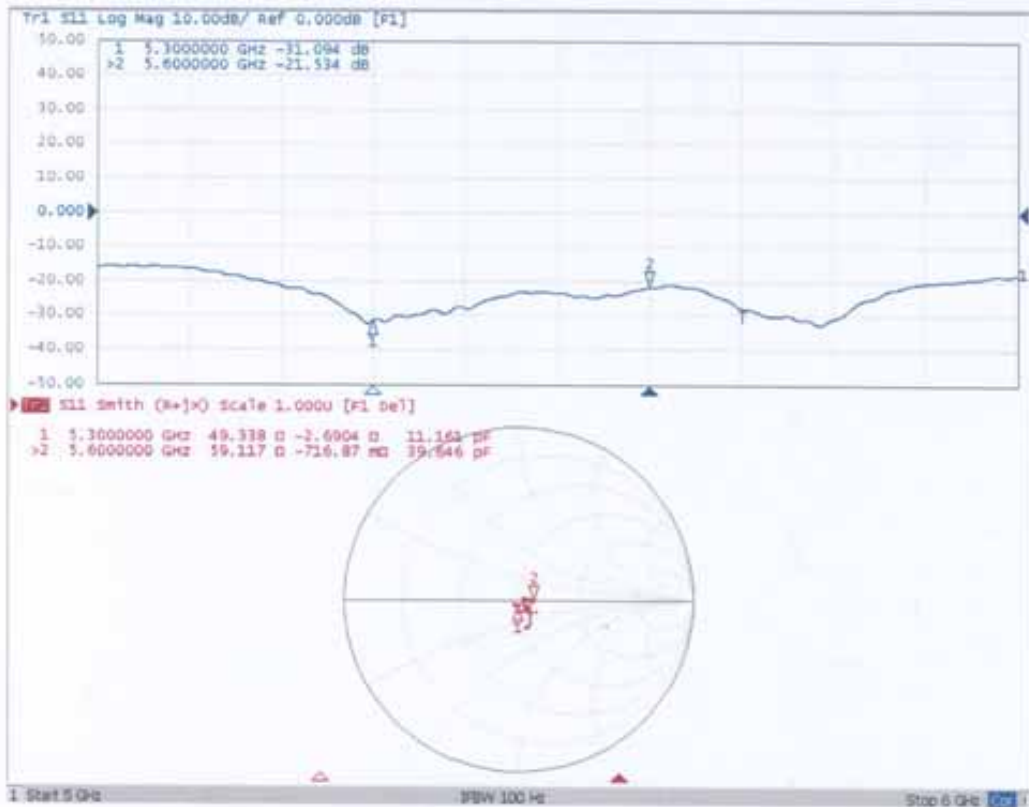


0 dB = 19.9 W/kg = 12.99 dBW/kg



Add: No.51 Xueyuan Road, Haidian District, Beijing, 100191, China  
 Tel: +86-10-62304633-2079 Fax: +86-10-62304633-2504  
 E-mail: cttl@chinattl.com Http://www.chinattl.cn

Impedance Measurement Plot for Head TSL







In Collaboration with  
**s p e a g**  
CALIBRATION LABORATORY

Add: No.51 Xueyuan Road, Haidian District, Beijing, 100191, China  
Tel: +86-10-62304633-2079 Fax: +86-10-62304633-2504  
E-mail: ctll@chinattl.com Http://www.chinattl.cn

### DASY5 Validation Report for Body TSL

Date: 29.01.2015

Test Laboratory: CTTL, Beijing, China

**DUT: Dipole 5GHz; Type: D5GHzV2; Serial: D5GHzV2 - SN: 1102**

Communication System: CW; Frequency: 5300 MHz, Frequency: 5600 MHz,  
Medium parameters used: Medium parameters used:  $f = 5300$  MHz;  $\sigma = 5.533$  mho/m;  $\epsilon_r = 48.87$ ;  $\rho = 1000$  kg/m<sup>3</sup>, Medium parameters used:  $f = 5600$  MHz;  $\sigma = 5.938$  mho/m;  $\epsilon_r = 48.28$ ;  $\rho = 1000$  kg/m<sup>3</sup>,  
Phantom section: Right Section  
Measurement Standard: DASY5 (IEEE/IEC/ANSI C63.19-2007)

#### DASY5 Configuration:

- Probe: EX3DV4 - SN3846; ConvF(4.18,4.18,4.18); Calibrated: 2014/9/24, ConvF(3.76,3.76,3.76); Calibrated: 2014/9/24,
- Sensor-Surface: 1.4mm (Mechanical Surface Detection)
- Electronics: DAE3 Sn536; Calibrated: 20/1/2015
- Phantom: Triple Flat Phantom 5.1C; Type: QD 000 P51 CA; Serial: 1161/3
- Measurement SW: DASY52, Version 52.8 (8); SEMCAD X Version 14.6.10 (7331)

**Dipole Calibration for Head Tissue/Pin=100mW, d=10mm, f=5300 MHz/Zoom Scan, dist=1.4mm (8x8x7)/Cube 0:** Measurement grid: dx=4mm, dy=4mm, dz=1.4mm

Reference Value = 66.54 V/m; Power Drift = 0.01 dB

Peak SAR (extrapolated) = 33.7 W/kg

**SAR(1 g) = 7.77 W/kg; SAR(10 g) = 2.18 W/kg**

Maximum value of SAR (measured) = 18.1 W/kg

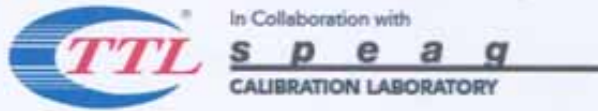
**Dipole Calibration for Head Tissue/Pin=100mW, d=10mm, f=5600 MHz/Zoom Scan, dist=1.4mm (8x8x7)/Cube 0:** Measurement grid: dx=4mm, dy=4mm, dz=1.4mm

Reference Value = 67.39 V/m; Power Drift = -0.08 dB

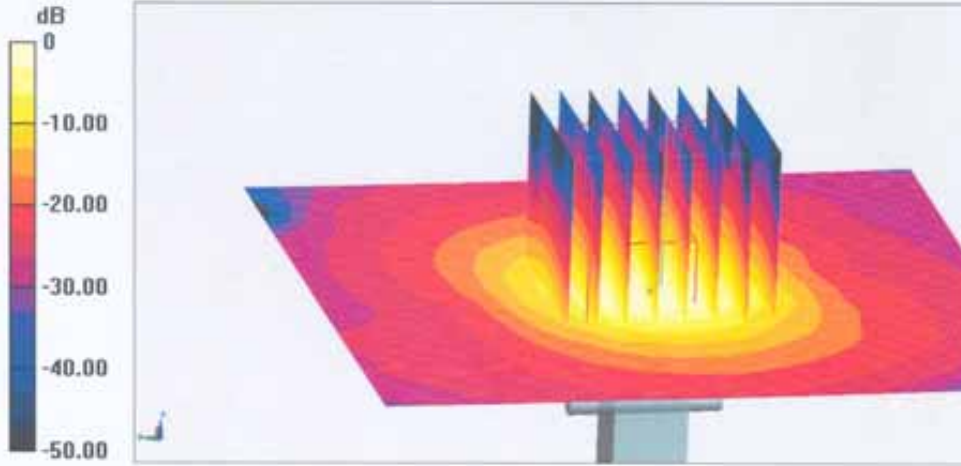
Peak SAR (extrapolated) = 37.1 W/kg

**SAR(1 g) = 8.05 W/kg; SAR(10 g) = 2.23 W/kg**

Maximum value of SAR (measured) = 20.2 W/kg



Add: No.51 Xueyuan Road, Haidian District, Beijing, 100191, China  
Tel: +86-10-62304633-2079 Fax: +86-10-62304633-2504  
E-mail: cttl@chinattl.com Http://www.chinattl.cn

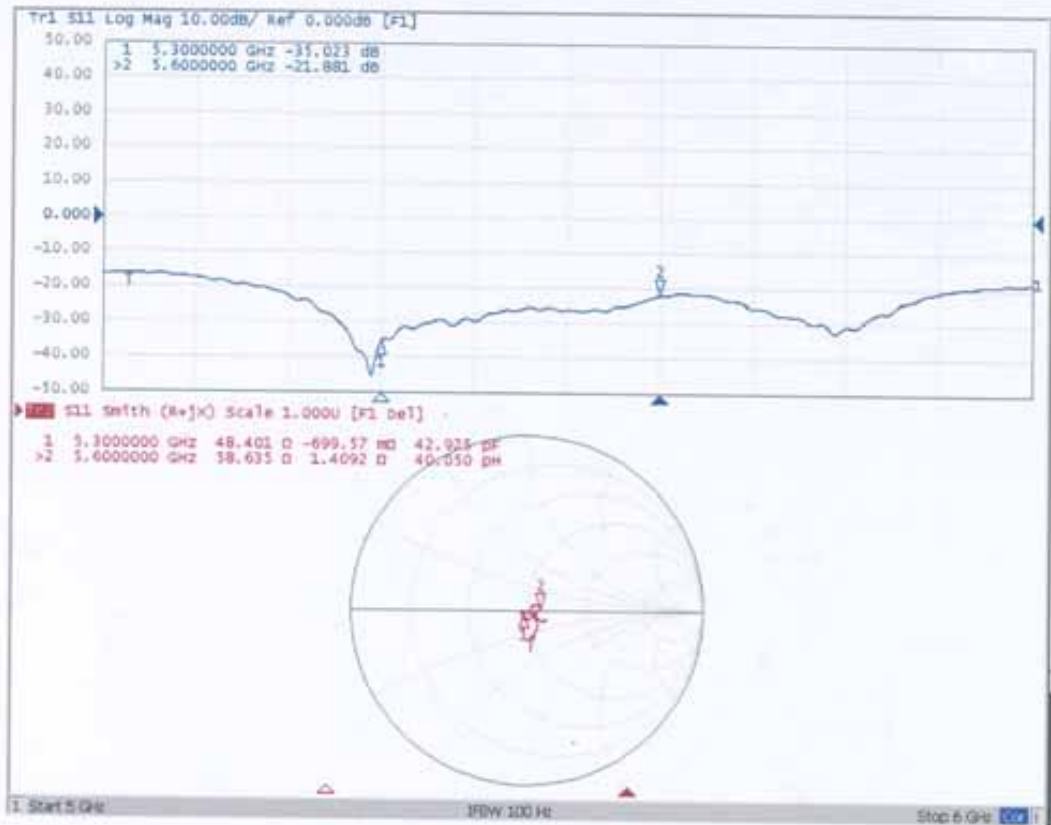


0 dB = 18.1 W/kg = 12.58 dBW/kg



Add: No.51 Xueyuan Road, Haidian District, Beijing, 100191, China  
 Tel: +86-10-62304633-2079 Fax: +86-10-62304633-2504  
 E-mail: cttl@chinattl.com Http://www.chinattl.cn

**Impedance Measurement Plot for Body TSL**





In Collaboration with  
**s p e a g**  
CALIBRATION LABORATORY



Add: No.52 Huayuanbei Road, Haidian District, Beijing, 100191, China  
Tel: +86-10-62304633-2079 Fax: +86-10-62304633-2504  
E-mail: info@emcite.com [Http://www.emcite.com](http://www.emcite.com)

Client **Auden** Certificate No: **Z14-97049**

**CALIBRATION CERTIFICATE**

Object: **D5GHzV2 - SN:1102**

Calibration Procedure(s): **TMC-OS-E-02-194**  
**Calibration procedure for dipole validation kits**

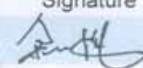
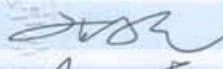
Calibration date: **June 16, 2014**

This calibration Certificate documents the traceability to national standards, which realize the physical units of measurements(SI). The measurements and the uncertainties with confidence probability are given on the following pages and are part of the certificate.

All calibrations have been conducted in the closed laboratory facility: environment temperature(22±3)°C and humidity<70%.

Calibration Equipment used (M&TE critical for calibration)

Primary Standards	ID #	Cal Date(Calibrated by, Certificate No.)	Scheduled Calibration
Power Meter NRVD	102083	11-Sep-13 (TMC, No.JZ13-443)	Sep-14
Power sensor NRV-Z5	100595	11-Sep-13 (TMC, No. JZ13-443)	Sep -14
Reference Probe EX3DV4	SN 3846	3- Sep-13 (SPEAG, No.EX3-3846_Sep13)	Sep-14
DAE4	SN 1331	23-Jan-14 (SPEAG, DAE4-1331_Jan14)	Jan -15
Signal Generator E4438C	MY49070393	13-Nov-13 (TMC, No.JZ13-394)	Nov-14
Network Analyzer E8362B	MY43021135	19-Oct-13 (TMC, No.JZ13-278)	Oct-14

	Name	Function	Signature
Calibrated by:	Yu Zongying	SAR Test Engineer	
Reviewed by:	Qi Dianyuan	SAR Project Leader	
Approved by:	Lu Bingsong	Deputy Director of the laboratory	

Issued: June 17, 2014

This calibration certificate shall not be reproduced except in full without written approval of the laboratory.





In Collaboration with

**s p e a g**  
CALIBRATION LABORATORY

Add: No.52 Huayuanbei Road, Haidian District, Beijing, 100191, China  
Tel: +86-10-62304633-2079 Fax: +86-10-62304633-2504  
E-mail: Info@emcite.com [Http://www.emcite.com](http://www.emcite.com)

**Glossary:**

TSL	tissue simulating liquid
ConvF	sensitivity in TSL / NORM <sub>x,y,z</sub>
N/A	not applicable or not measured

**Calibration is Performed According to the Following Standards:**

- IEEE Std 1528-2013, "IEEE Recommended Practice for Determining the Peak Spatial-Averaged Specific Absorption Rate (SAR) in the Human Head from Wireless Communications Devices: Measurement Techniques", June 2013
- IEC 62209-1, "Procedure to measure the Specific Absorption Rate (SAR) For hand-held devices used in close proximity to the ear (frequency range of 300MHz to 3GHz)", February 2005
- KDB865664, SAR Measurement Requirements for 100 MHz to 6 GHz

**Additional Documentation:**

- DASY4/5 System Handbook

**Methods Applied and Interpretation of Parameters:**

- Measurement Conditions:* Further details are available from the Validation Report at the end of the certificate. All figures stated in the certificate are valid at the frequency indicated.
- Antenna Parameters with TSL:* The dipole is mounted with the spacer to position its feed point exactly below the center marking of the flat phantom section, with the arms oriented parallel to the body axis.
- Feed Point Impedance and Return Loss:* These parameters are measured with the dipole positioned under the liquid filled phantom. The impedance stated is transformed from the measurement at the SMA connector to the feed point. The Return Loss ensures low reflected power. No uncertainty required.
- Electrical Delay:* One-way delay between the SMA connector and the antenna feed point. No uncertainty required.
- SAR measured:* SAR measured at the stated antenna input power.
- SAR normalized:* SAR as measured, normalized to an input power of 1 W at the antenna connector.
- SAR for nominal TSL parameters:* The measured TSL parameters are used to calculate the nominal SAR result.

The reported uncertainty of measurement is stated as the standard uncertainty of Measurement multiplied by the coverage factor  $k=2$ , which for a normal distribution Corresponds to a coverage probability of approximately 95%.



In Collaboration with  
**s p e a g**  
CALIBRATION LABORATORY

Add: No.52 Huayuanbei Road, Haidian District, Beijing, 100191, China  
Tel: +86-10-62304633-2079 Fax: +86-10-62304633-2504  
E-mail: Info@emcite.com [Http://www.emcite.com](http://www.emcite.com)

**Measurement Conditions**

DASY system configuration, as far as not given on page 1.

DASY Version	DASY52	52.8.8.1222
Extrapolation	Advanced Extrapolation	
Phantom	Flat Phantom	
Distance Dipole Center - TSL	10 mm	with Spacer
Zoom Scan Resolution	dx, dy = 4.0 mm, dz = 1.4 mm	
Frequency	5200 MHz ± 1 MHz 5500 MHz ± 1 MHz 5800 MHz ± 1 MHz	

**Head TSL parameters at 5200MHz**

The following parameters and calculations were applied.

	Temperature	Permittivity	Conductivity
Nominal Head TSL parameters	22.0 °C	36.0	4.66 mho/m
Measured Head TSL parameters	(22.0 ± 0.2) °C	36.3 ± 6 %	4.62 mho/m ± 6 %
Head TSL temperature change during test	<1.0 °C	----	----

**SAR result with Head TSL at 5200MHz**

SAR averaged over 1 cm <sup>3</sup> (1 g) of Head TSL	Condition	
SAR measured	250 mW input power	7.81 mW / g
SAR for nominal Head TSL parameters	normalized to 1W	<b>78.2 mW / g ± 23.0 % (k=2)</b>
SAR averaged over 10 cm <sup>3</sup> (10 g) of Head TSL	Condition	
SAR measured	250 mW input power	2.23 mW / g
SAR for nominal Head TSL parameters	normalized to 1W	<b>22.3 mW / g ± 22.2 % (k=2)</b>

**Head TSL parameters at 5500MHz**

The following parameters and calculations were applied.

	Temperature	Permittivity	Conductivity
Nominal Head TSL parameters	22.0 °C	35.6	4.96 mho/m
Measured Head TSL parameters	(22.0 ± 0.2) °C	35.2 ± 6 %	5.04 mho/m ± 6 %
Head TSL temperature change during test	<1.0 °C	----	----

**SAR result with Head TSL at 5500MHz**

SAR averaged over 1 cm <sup>3</sup> (1 g) of Head TSL	Condition	
SAR measured	250 mW input power	8.30 mW / g
SAR for nominal Head TSL parameters	normalized to 1W	<b>82.9 mW / g ± 23.0 % (k=2)</b>
SAR averaged over 10 cm <sup>3</sup> (10 g) of Head TSL	Condition	
SAR measured	250 mW input power	2.38 mW / g
SAR for nominal Head TSL parameters	normalized to 1W	<b>23.8 mW / g ± 22.2 % (k=2)</b>



In Collaboration with  
**s p e a g**  
CALIBRATION LABORATORY

Add: No.52 Huayuanbei Road, Haidian District, Beijing, 100191, China  
Tel: +86-10-62304633-2079 Fax: +86-10-62304633-2504  
E-mail: Info@emcite.com [Http://www.emcite.com](http://www.emcite.com)

**Head TSL parameters at 5800MHz**

The following parameters and calculations were applied.

	Temperature	Permittivity	Conductivity
Nominal Head TSL parameters	22.0 °C	35.3	5.27 mho/m
Measured Head TSL parameters	(22.0 ± 0.2) °C	34.9 ± 6 %	5.28 mho/m ± 6 %
Head TSL temperature change during test	<1.0 °C	----	----

**SAR result with Head TSL at 5800MHz**

SAR averaged over 1 cm <sup>3</sup> (1 g) of Head TSL	Condition	
SAR measured	250 mW input power	7.57 mW / g
SAR for nominal Head TSL parameters	normalized to 1W	<b>75.5 mW / g ± 23.0 % (k=2)</b>
SAR averaged over 10 cm <sup>3</sup> (10 g) of Head TSL	Condition	
SAR measured	250 mW input power	2.15 mW / g
SAR for nominal Head TSL parameters	normalized to 1W	<b>21.4 mW / g ± 22.2 % (k=2)</b>

**Body TSL parameters at 5200MHz**

The following parameters and calculations were applied.

	Temperature	Permittivity	Conductivity
Nominal Body TSL parameters	22.0 °C	49.0	5.30 mho/m
Measured Body TSL parameters	(22.0 ± 0.2) °C	48.1 ± 6 %	5.32 mho/m ± 6 %
Body TSL temperature change during test	<1.0 °C	----	----

**SAR result with Body TSL at 5200MHz**

SAR averaged over 1 cm <sup>3</sup> (1 g) of Body TSL	Condition	
SAR measured	250 mW input power	7.55 mW / g
SAR for nominal Body TSL parameters	normalized to 1W	<b>75.2 mW / g ± 23.0 % (k=2)</b>
SAR averaged over 10 cm <sup>3</sup> (10 g) of Body TSL	Condition	
SAR measured	250 mW input power	2.18 mW / g
SAR for nominal Body TSL parameters	normalized to 1W	<b>21.7 mW / g ± 22.2 % (k=2)</b>





Add: No.52 Huayuanbei Road, Haidian District, Beijing, 100191, China  
 Tel: +86-10-62304633-2079 Fax: +86-10-62304633-2504  
 E-mail: Info@emcite.com [Http://www.emcite.com](http://www.emcite.com)

**Body TSL parameters at 5500MHz**

The following parameters and calculations were applied.

	Temperature	Permittivity	Conductivity
Nominal Body TSL parameters	22.0 °C	48.6	5.65 mho/m
Measured Body TSL parameters	(22.0 ± 0.2) °C	47.5 ± 6 %	5.62 mho/m ± 6 %
Body TSL temperature change during test	<1.0 °C	----	----

**SAR result with Body TSL at 5500MHz**

SAR averaged over 1 cm <sup>3</sup> (1 g) of Body TSL	Condition	
SAR measured	250 mW input power	8.05 mW / g
SAR for nominal Body TSL parameters	normalized to 1W	80.1 mW /g ± 23.0 % (k=2)
SAR averaged over 10 cm <sup>3</sup> (10 g) of Body TSL	Condition	
SAR measured	250 mW input power	2.30 mW / g
SAR for nominal Body TSL parameters	normalized to 1W	22.9 mW /g ± 22.2 % (k=2)

**Body TSL parameters at 5800MHz**

The following parameters and calculations were applied.

	Temperature	Permittivity	Conductivity
Nominal Body TSL parameters	22.0 °C	48.2	6.00 mho/m
Measured Body TSL parameters	(22.0 ± 0.2) °C	47.2 ± 6 %	6.05 mho/m ± 6 %
Body TSL temperature change during test	<1.0 °C	----	----

**SAR result with Body TSL at 5800MHz**

SAR averaged over 1 cm <sup>3</sup> (1 g) of Body TSL	Condition	
SAR measured	250 mW input power	7.23 mW / g
SAR for nominal Body TSL parameters	normalized to 1W	72.0 mW /g ± 23.0 % (k=2)
SAR averaged over 10 cm <sup>3</sup> (10 g) of Body TSL	Condition	
SAR measured	250 mW input power	2.05 mW / g
SAR for nominal Body TSL parameters	normalized to 1W	20.4 mW /g ± 22.2 % (k=2)

**Appendix**

**Antenna Parameters with Head TSL at 5200MHz**

Impedance, transformed to feed point	50.2Ω-8.19jΩ
Return Loss	- 21.8dB



Add: No 52 Huayuanbei Road, Haidian District, Beijing, 100191, China  
 Tel: +86-10-62304633-2079 Fax: +86-10-62304633-2504  
 E-mail: Info@emcite.com [Http://www.emcite.com](http://www.emcite.com)

**Antenna Parameters with Head TSL at 5500MHz**

Impedance, transformed to feed point	52.0Ω- 4.65jΩ
Return Loss	- 26.0dB

**Antenna Parameters with Head TSL at 5800MHz**

Impedance, transformed to feed point	54.7Ω- 1.58jΩ
Return Loss	- 26.5dB

**Antenna Parameters with Body TSL at 5200MHz**

Impedance, transformed to feed point	51.6Ω- 7.57jΩ
Return Loss	- 22.4dB

**Antenna Parameters with Body TSL at 5500MHz**

Impedance, transformed to feed point	51.1Ω- 5.61jΩ
Return Loss	- 25.0dB

**Antenna Parameters with Body TSL at 5800MHz**

Impedance, transformed to feed point	54.5Ω- 0.89jΩ
Return Loss	- 27.2dB

**General Antenna Parameters and Design**

Electrical Delay (one direction)	1.183 ns
----------------------------------	----------

After long term use with 100W radiated power, only a slight warming of the dipole near the feedpoint can be measured.

The dipole is made of standard semirigid coaxial cable. The center conductor of the feeding line is directly connected to the second arm of the dipole. The antenna is therefore short-circuited for DC-signals. On some of the dipoles, small end caps are added to the dipole arms in order to improve matching when loaded according to the position as explained in the "Measurement Conditions" paragraph. The SAR data are not affected by this change. The overall dipole length is still according to the Standard.

No excessive force must be applied to the dipole arms, because they might bend or the soldered connections near the feedpoint may be damaged.

**Additional EUT Data**

Manufactured by	SPEAG
-----------------	-------



Add: No.52 Huayuanbei Road, Haidian District, Beijing, 100191, China  
 Tel: +86-10-62304633-2079 Fax: +86-10-62304633-2504  
 E-mail: Info@emcite.com [Http://www.emcite.com](http://www.emcite.com)

**DASY5 Validation Report for Head TSL**

Date: 16.06.2014

Test Laboratory: TMC, Beijing, China

**DUT: Dipole D5GHzV2; Type: D5GHzV2; Serial: D5GHzV2 - SN:1102**

Communication System: UID 0. CW; Frequency: 5200 MHz; Duty Cycle: 1:1

Medium parameters used:  $f = 5200$  MHz;  $\sigma = 4.62$  S/m;  $\epsilon_r = 36.3$ ;  $\rho = 1000$  kg/m<sup>3</sup>

Phantom section: Flat Section

Measurement Standard: DASY5 (IEEE/IEC/ANSI C63.19-2007)

**DASY5 Configuration:**

- Probe: EX3DV4 - SN3846; ConvF(5.25, 5.25, 5.25); Calibrated: 2013-09-03;
- Sensor-Surface: 1.4mm (Mechanical Surface Detection)
- Electronics: DAE4 Sn1331; Calibrated: 2014-01-23
- Phantom: ELI 4.0; Type: QDOVA001BA
- Measurement SW: DASY52, Version 52.8 (8); SEMCAD X Version 14.6.10 (7331)

**System Performance Check with D5GHzV2 Dipole (graded grid)/d=10mm,**

**Pin=100mW, f=5200 MHz/Zoom Scan (4x4x1.4mm, graded), dist=1.4mm**

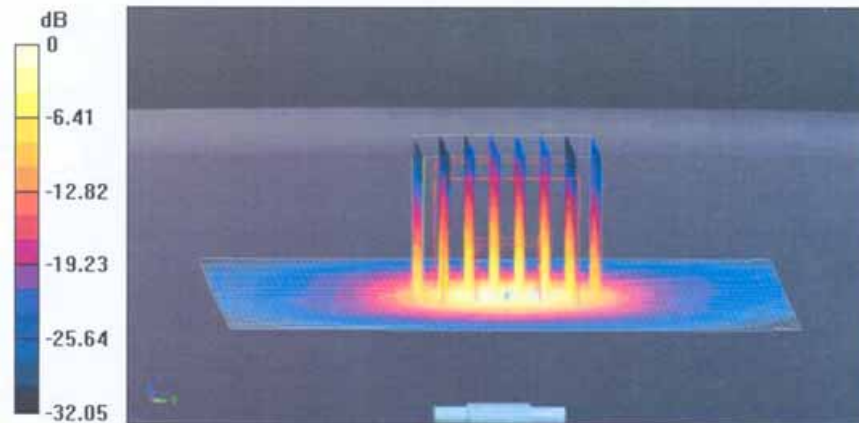
**(8x8x7)/Cube 0: Measurement grid: dx=4mm, dy=4mm, dz=1.4mm**

Reference Value = 69.42 V/m; Power Drift = 0.05 dB

Peak SAR (extrapolated) = 36.0 W/kg

**SAR(1 g) = 7.81 W/kg; SAR(10 g) = 2.23 W/kg**

Maximum value of SAR (measured) = 18.5 W/kg



0 dB = 19.1 W/kg = 12.81 dBW/kg





In Collaboration with  
**s p e a g**  
CALIBRATION LABORATORY

Add: No.52 Huayuanbei Road, Haidian District, Beijing, 100191, China  
Tel: +86-10-62304633-2079 Fax: +86-10-62304633-2504  
E-mail: Info@emcite.com [Http://www.emcite.com](http://www.emcite.com)

**DASY5 Validation Report for Head TSL**

Date: 16.06.2014

Test Laboratory: TMC, Beijing, China

**DUT: Dipole D5GHzV2; Type: D5GHzV2; Serial: D5GHzV2 - SN:1102**

Communication System: UID 0, CW; Frequency: 5500 MHz; Duty Cycle: 1:1

Medium parameters used:  $f = 5500$  MHz;  $\sigma = 5.04$  S/m;  $\epsilon_r = 35.2$ ;  $\rho = 1000$  kg/m<sup>3</sup>

Phantom section: Flat Section

Measurement Standard: DASY5 (IEEE/IEC/ANSI C63.19-2007)

DASY5 Configuration:

- Probe: EX3DV4 - SN3846; ConvF(4.8, 4.8, 4.8); Calibrated: 2013-09-03;
- Sensor-Surface: 1.4mm (Mechanical Surface Detection)
- Electronics: DAE4 Sn1331; Calibrated: 2014-01-23
- Phantom: ELI 4.0; Type: QDOVA001BA
- Measurement SW: DASY52, Version 52.8 (8); SEMCAD X Version 14.6.10 (7331)

**System Performance Check with D5GHzV2 Dipole (graded grid)/d=10mm,**

**Pin=100mW, f=5500 MHz/Zoom Scan (4x4x1.4mm, graded), dist=1.4mm**

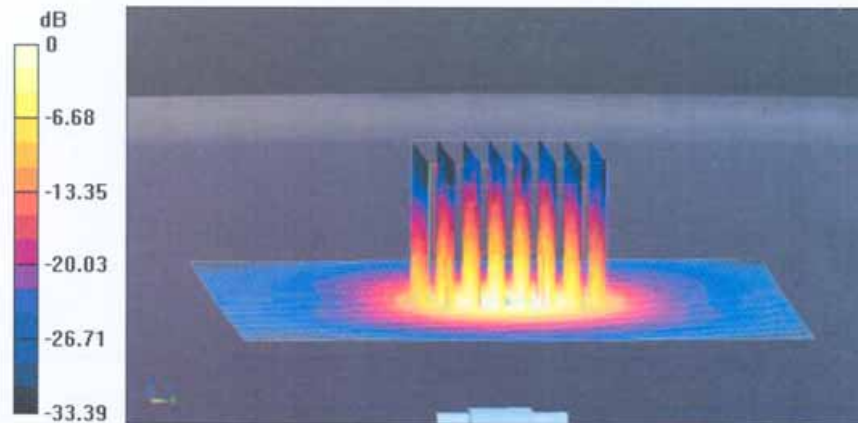
**(8x8x7)/Cube 0: Measurement grid: dx=4mm, dy=4mm, dz=1.4mm**

Reference Value = 69.93 V/m; Power Drift = 0.07 dB

Peak SAR (extrapolated) = 40.2 W/kg

**SAR(1 g) = 8.3 W/kg; SAR(10 g) = 2.38 W/kg**

Maximum value of SAR (measured) = 20.5 W/kg



0 dB = 20.5 W/kg = 13.13 dBW/kg



In Collaboration with  
**s p e a g**  
 CALIBRATION LABORATORY

Add: No.52 Huayuanbei Road, Haidian District, Beijing, 100191, China  
 Tel: +86-10-62304633-2079 Fax: +86-10-62304633-2504  
 E-mail: Info@emcite.com [Http://www.emcite.com](http://www.emcite.com)

**DASY5 Validation Report for Head TSL**

Date: 16.06.2014

Test Laboratory: TMC, Beijing, China

**DUT: Dipole D5GHzV2; Type: D5GHzV2; Serial: D5GHzV2 - SN:1102**

Communication System: UID 0, CW; Frequency: 5800 MHz; Duty Cycle: 1:1

Medium parameters used:  $f = 5800$  MHz;  $\sigma = 5.28$  S/m;  $\epsilon_r = 34.9$ ;  $\rho = 1000$  kg/m<sup>3</sup>

Phantom section: Flat Section

Measurement Standard: DASY5 (IEEE/IEC/ANSI C63.19-2007)

DASY5 Configuration:

- Probe: EX3DV4 - SN3846; ConvF(4.51, 4.51, 4.51); Calibrated: 2013-09-03;
- Sensor-Surface: 1.4mm (Mechanical Surface Detection)
- Electronics: DAE4 Sn1331; Calibrated: 2014-01-23
- Phantom: ELI 4.0; Type: QDOVA001BA
- Measurement SW: DASY52, Version 52.8 (8); SEMCAD X Version 14.6.10 (7331)

**System Performance Check with D5GHzV2 Dipole (graded grid)/d=10mm,**

**Pin=100mW, f=5800 MHz/Zoom Scan (4x4x1.4mm, graded), dist=1.4mm**

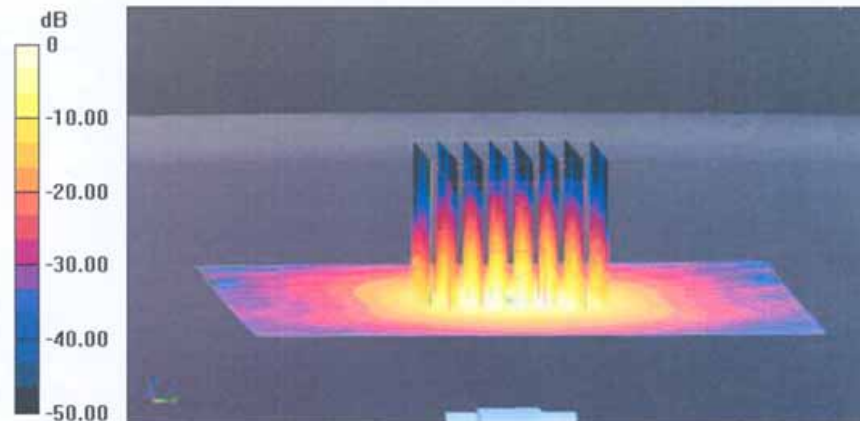
**(8x8x7)/Cube 0: Measurement grid: dx=4mm, dy=4mm, dz=1.4mm**

Reference Value = 66.33 V/m; Power Drift = 0.08 dB

Peak SAR (extrapolated) = 37.9 W/kg

**SAR(1 g) = 7.57 W/kg; SAR(10 g) = 2.15 W/kg**

Maximum value of SAR (measured) = 19.2 W/kg



0 dB = 18.9 W/kg = 12.77 dBW/kg

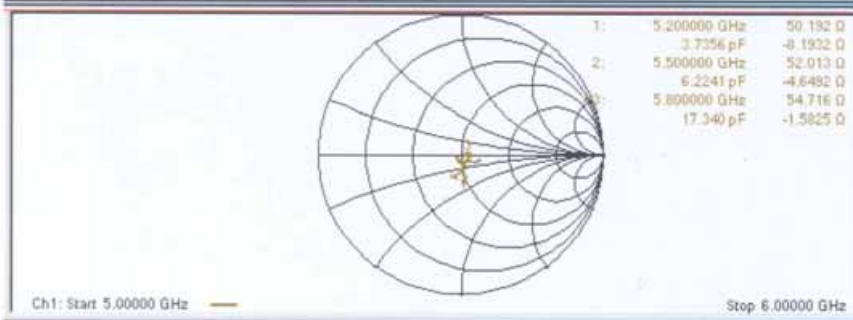
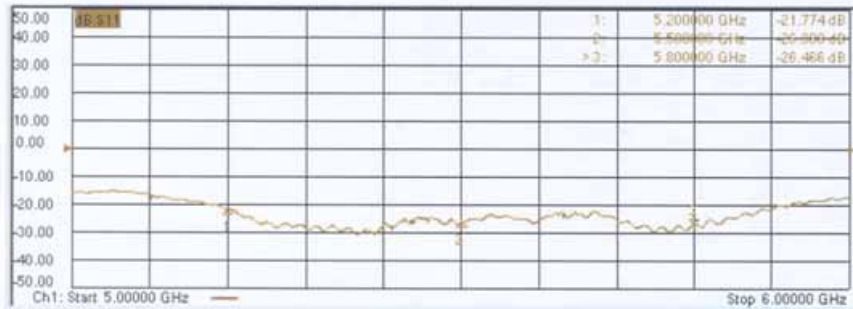




In Collaboration with  
**s p e a g**  
CALIBRATION LABORATORY

Add: No.52 Huayuanbei Road, Haidian District, Beijing, 100191, China  
Tel: +86-10-62304633-2079 Fax: +86-10-62304633-2504  
E-mail: Info@emcite.com [Http://www.emcite.com](http://www.emcite.com)

Impedance Measurement Plot for Head TSL





In Collaboration with  
**s p e a g**  
CALIBRATION LABORATORY

Add: No.52 Huayuanbei Road, Haidian District, Beijing, 100191, China  
Tel: +86-10-62304633-2079 Fax: +86-10-62304633-2504  
E-mail: Info@emcite.com [Http://www.emcite.com](http://www.emcite.com)

**DASY5 Validation Report for Body TSL**

Date: 13.06.2014

Test Laboratory: TMC, Beijing, China

**DUT: Dipole D5GHzV2; Type: D5GHzV2; Serial: D5GHzV2 - SN:1102**

Communication System: UID 0, CW; Frequency: 5200 MHz; Duty Cycle: 1:1

Medium parameters used:  $f = 5200 \text{ MHz}$ ;  $\sigma = 5.32 \text{ S/m}$ ;  $\epsilon_r = 48.1$ ;  $\rho = 1000 \text{ kg/m}^3$

Phantom section: Flat Section

Measurement Standard: DASY5 (IEEE/IEC/ANSI C63.19-2007)

DASY5 Configuration:

- Probe: EX3DV4 - SN3846; ConvF(4.36, 4.36, 4.36); Calibrated: 2013-09-03;
- Sensor-Surface: 1.4mm (Mechanical Surface Detection)
- Electronics: DAE4 Sn1331; Calibrated: 2014-01-23
- Phantom: ELI 4.0; Type: QDOVA001BA
- Measurement SW: DASY52, Version 52.8 (8); SEMCAD X Version 14.6.10 (7331)

**System Performance Check with D5GHzV2 Dipole (graded grid)/d=10mm,**

**Pin=100mW, f=5200 MHz/Zoom Scan (4x4x1.4mm, graded), dist=1.4mm**

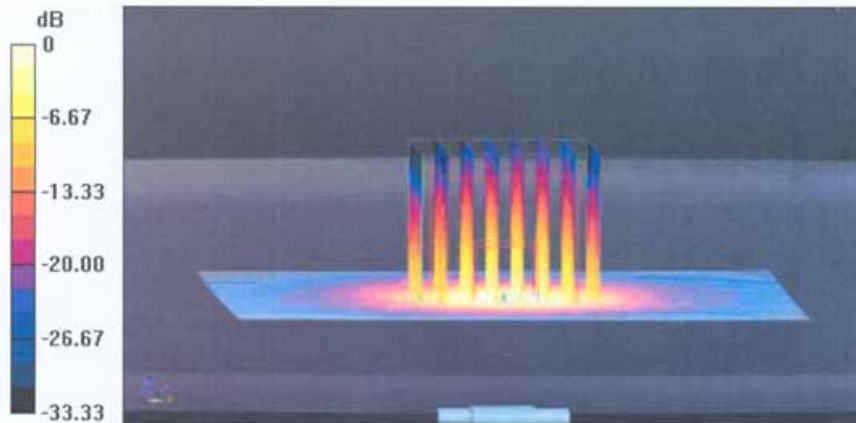
**(8x8x7)/Cube 0: Measurement grid: dx=4mm, dy=4mm, dz=1.4mm**

Reference Value = 65.52 V/m; Power Drift = 0.00 dB

Peak SAR (extrapolated) = 29.4 W/kg

**SAR(1 g) = 7.55 W/kg; SAR(10 g) = 2.18 W/kg**

Maximum value of SAR (measured) = 17.2 W/kg



0 dB = 17.3 W/kg = 12.38 dBW/kg



In Collaboration with  
**s p e e g**  
CALIBRATION LABORATORY

Add: No.52 Huayuanbei Road, Haidian District, Beijing, 100191, China  
Tel: +86-10-62304633-2079 Fax: +86-10-62304633-2504  
E-mail: Info@emcite.com [Http://www.emcite.com](http://www.emcite.com)

**DASY5 Validation Report for Body TSL**

Date: 13.06.2014

Test Laboratory: TMC, Beijing, China

**DUT: Dipole D5GHzV2; Type: D5GHzV2; Serial: D5GHzV2 - SN:1102**

Communication System: UID 0, CW; Frequency: 5500 MHz; Duty Cycle: 1:1

Medium parameters used:  $f = 5500 \text{ MHz}$ ;  $\sigma = 5.62 \text{ S/m}$ ;  $\epsilon_r = 47.5$ ;  $\rho = 1000 \text{ kg/m}^3$

Phantom section: Flat Section

Measurement Standard: DASY5 (IEEE/IEC/ANSI C63.19-2007)

DASY5 Configuration:

- Probe: EX3DV4 - SN3846; ConvF(3.81, 3.81, 3.81); Calibrated: 2013-09-03;
- Sensor-Surface: 1.4mm (Mechanical Surface Detection)
- Electronics: DAE4 Sn1331; Calibrated: 2014-01-23
- Phantom: ELI 4.0; Type: QDOVA001BA
- Measurement SW: DASY52, Version 52.8 (8); SEMCAD X Version 14.6.10 (7331)

**System Performance Check with D5GHzV2 Dipole (graded grid)/d=10mm,**

**Pin=100mW, f=5500 MHz/Zoom Scan (4x4x1.4mm, graded), dist=1.4mm**

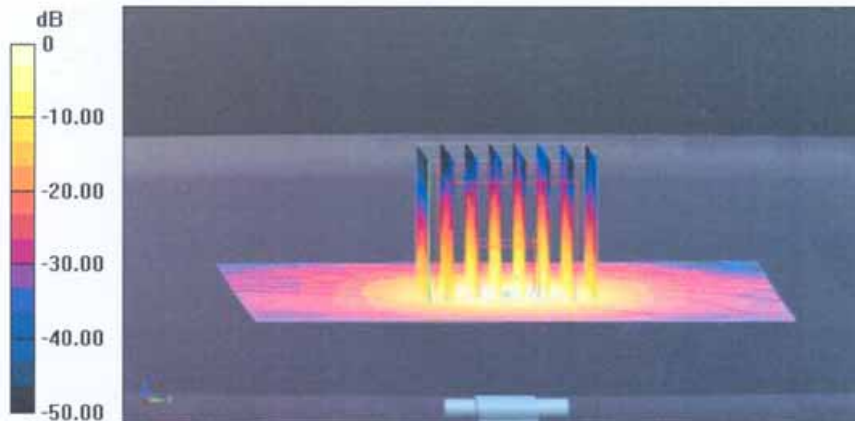
**(8x8x7)/Cube 0: Measurement grid: dx=4mm, dy=4mm, dz=1.4mm**

Reference Value = 68.16 V/m; Power Drift = 0.03 dB

Peak SAR (extrapolated) = 33.5 W/kg

**SAR(1 g) = 8.05 W/kg; SAR(10 g) = 2.3 W/kg**

Maximum value of SAR (measured) = 18.8 W/kg



0 dB = 18.9 W/kg = 12.76 dBW/kg



In Collaboration with  
**s p e a g**  
CALIBRATION LABORATORY

Add: No.52 Huayuanbei Road, Haidian District, Beijing, 100191, China  
Tel: +86-10-62304633-2079 Fax: +86-10-62304633-2504  
E-mail: Info@emcite.com [Http://www.emcite.com](http://www.emcite.com)

**DASY5 Validation Report for Body TSL**

Date: 13.06.2014

Test Laboratory: TMC, Beijing, China

**DUT: Dipole D5GHzV2; Type: D5GHzV2; Serial: D5GHzV2 - SN:1102**

Communication System: UID 0, CW; Frequency: 5800 MHz; Duty Cycle: 1:1

Medium parameters used:  $f = 5800 \text{ MHz}$ ;  $\sigma = 6.05 \text{ S/m}$ ;  $\epsilon_r = 47.2$ ;  $\rho = 1000 \text{ kg/m}^3$

Phantom section: Flat Section

Measurement Standard: DASY5 (IEEE/IEC/ANSI C63.19-2007)

DASY5 Configuration:

- Probe: EX3DV4 - SN3846; ConvF(3.94, 3.94, 3.94); Calibrated: 2013-09-03;
- Sensor-Surface: 1.4mm (Mechanical Surface Detection)
- Electronics: DAE4 Sn1331; Calibrated: 2014-01-23
- Phantom: ELI 4.0; Type: QDOVA001BA
- Measurement SW: DASY52, Version 52.8 (8); SEMCAD X Version 14.6.10 (7331)

**System Performance Check with D5GHzV2 Dipole (graded grid)/d=10mm,**

**Pin=100mW, f=5800 MHz/Zoom Scan (4x4x1.4mm, graded), dist=1.4mm**

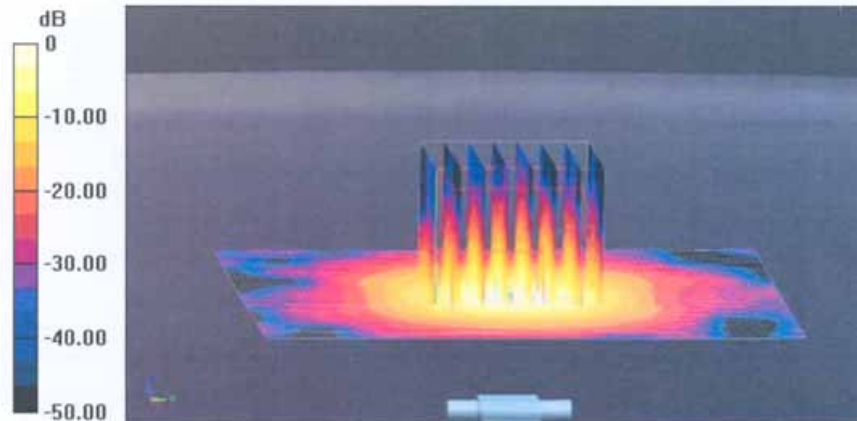
**(8x8x7)/Cube 0: Measurement grid: dx=4mm, dy=4mm, dz=1.4mm**

Reference Value = 63.52 V/m; Power Drift = -0.02 dB

Peak SAR (extrapolated) = 33.4 W/kg

**SAR(1 g) = 7.23 W/kg; SAR(10 g) = 2.05 W/kg**

Maximum value of SAR (measured) = 17.4 W/kg



0 dB = 17.6 W/kg = 12.45 dBW/kg





In Collaboration with  
**s p e a g**  
 CALIBRATION LABORATORY

Add: No.52 Huayuanbei Road, Haidian District, Beijing, 100191, China  
 Tel: +86-10-62304633-2079 Fax: +86-10-62304633-2504  
 E-mail: Info@emcite.com [Http://www.emcite.com](http://www.emcite.com)

**Impedance Measurement Plot for Body TSL**

