

**Figure 7**  
Inside of the EUT



**Figure 8**  
Inside of the EUT



**Figure 9**  
Inside of the EUT



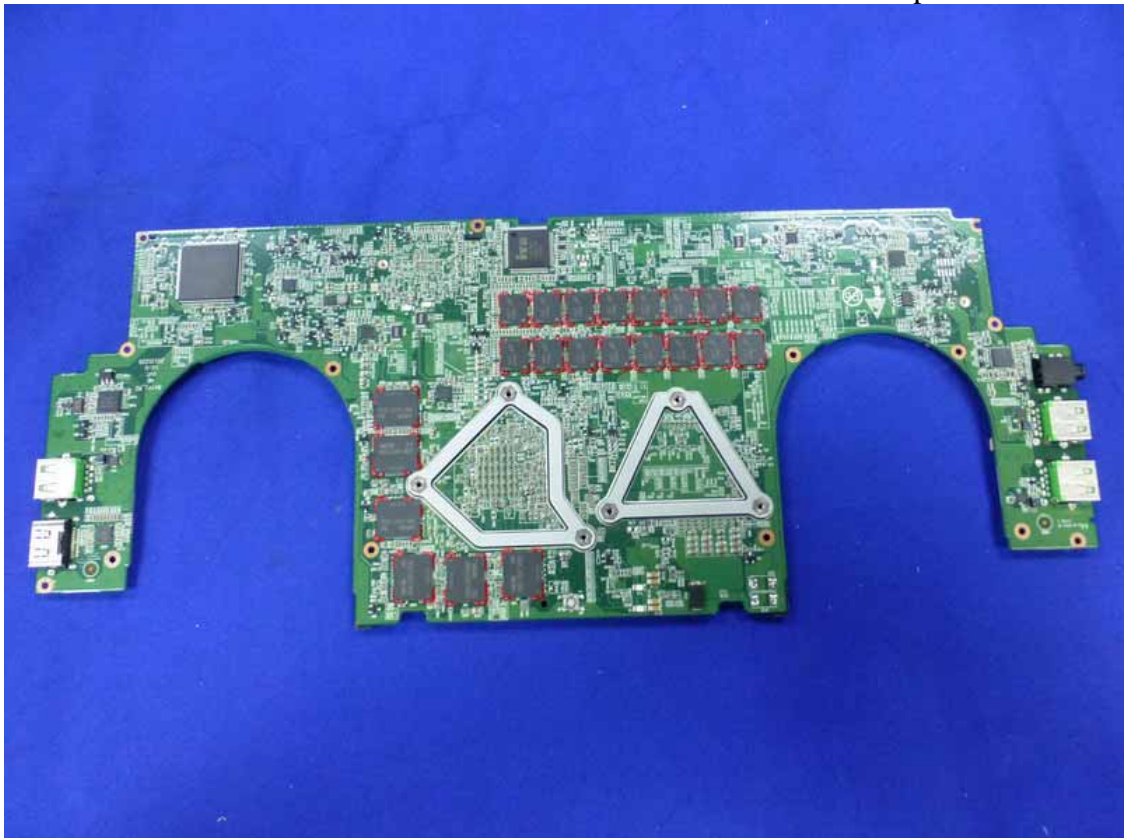
**Figure 10**  
Frontside of the LCD Panel



**Figure 11**  
Component side of the PCB



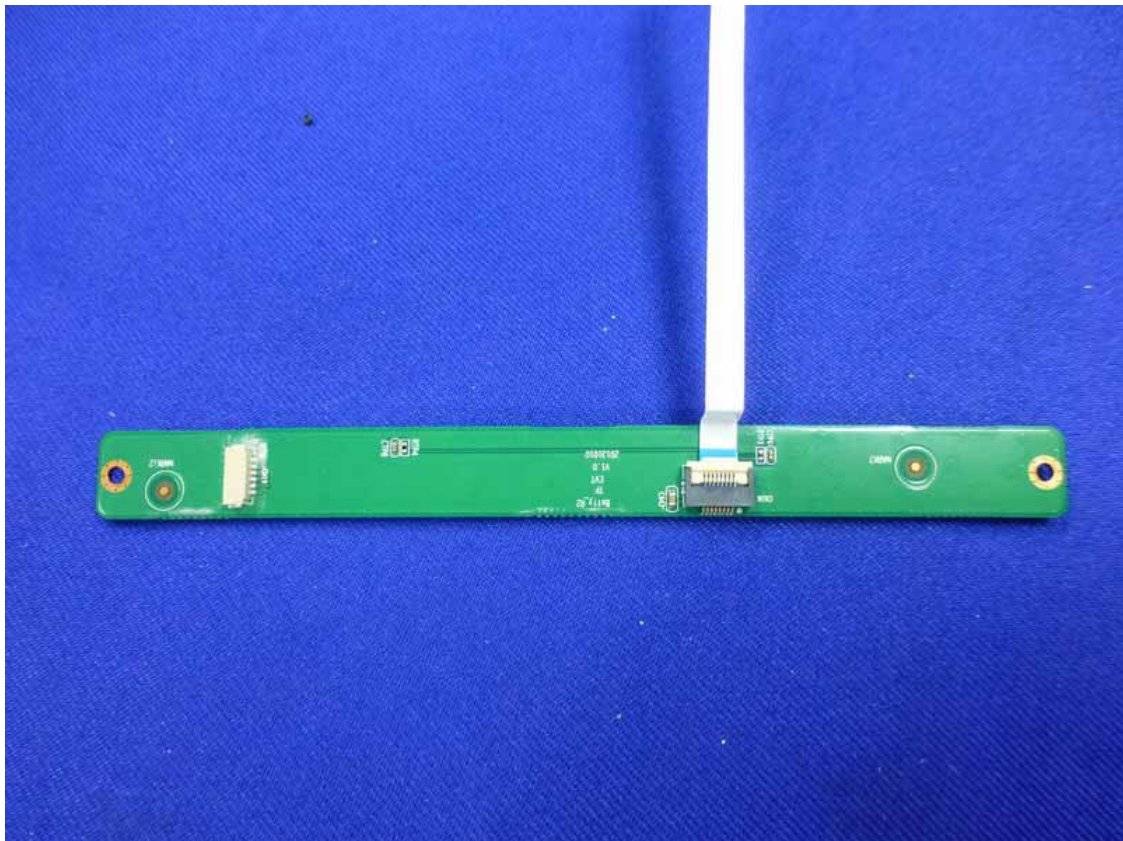
**Figure 12**  
Component side of the PCB



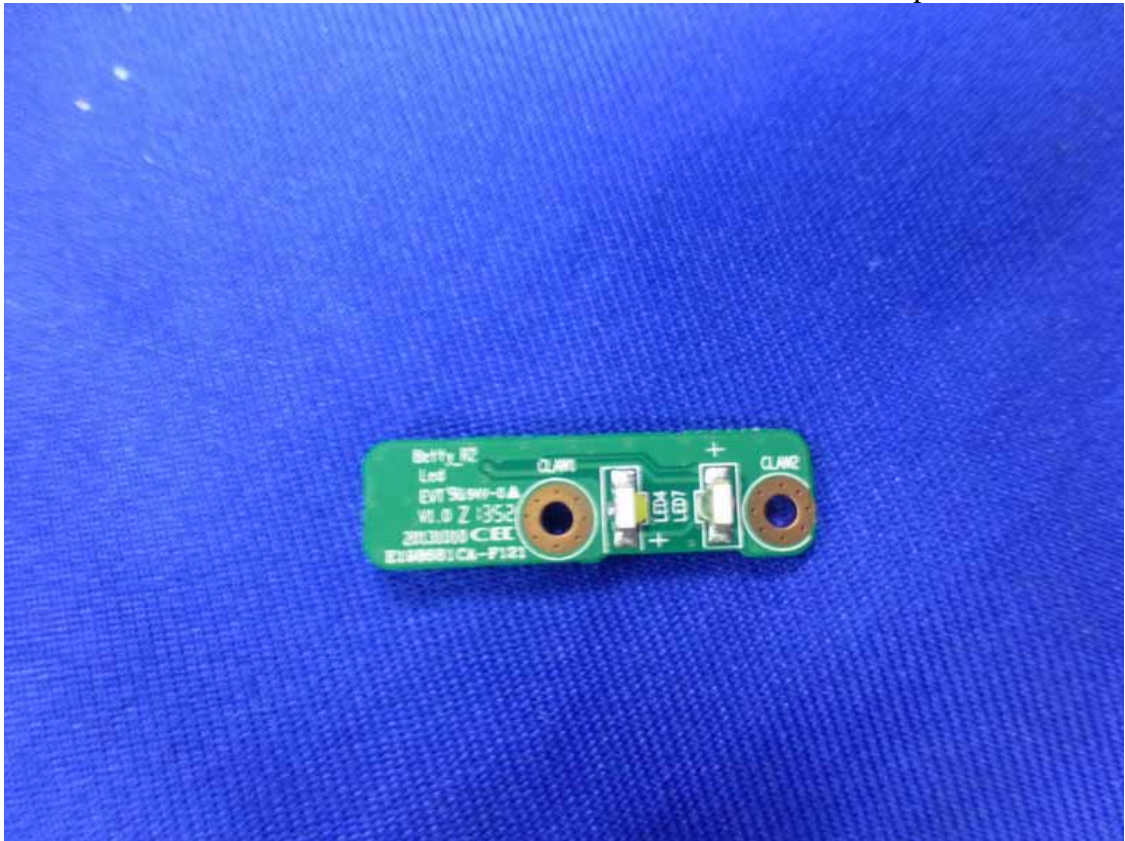
**Figure 13**  
Frontside of the Control Board



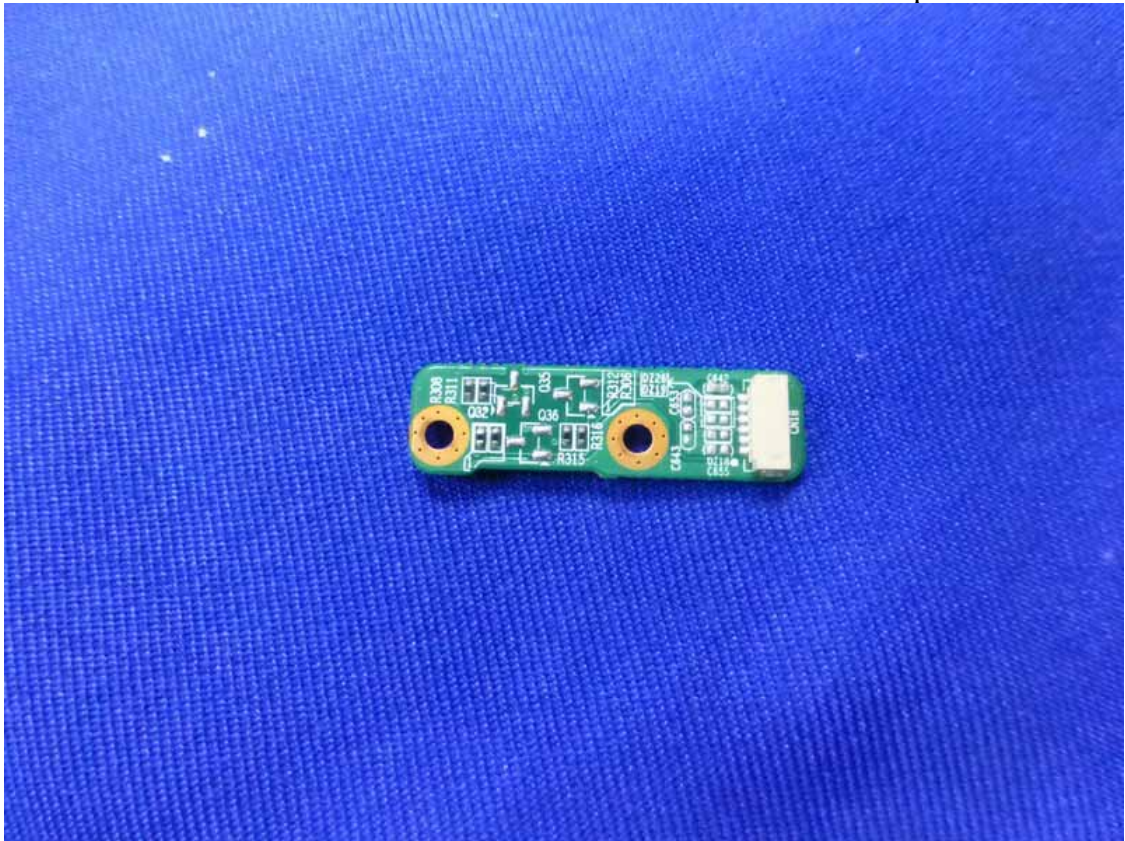
**Figure 14**  
Backside of the Control Board



**Figure 15**  
Component side of the PCB



**Figure 16**  
Component side of the PCB



**Figure 17**  
Wifi Card of the EUT



**Figure 18**  
Wifi Card of the EUT



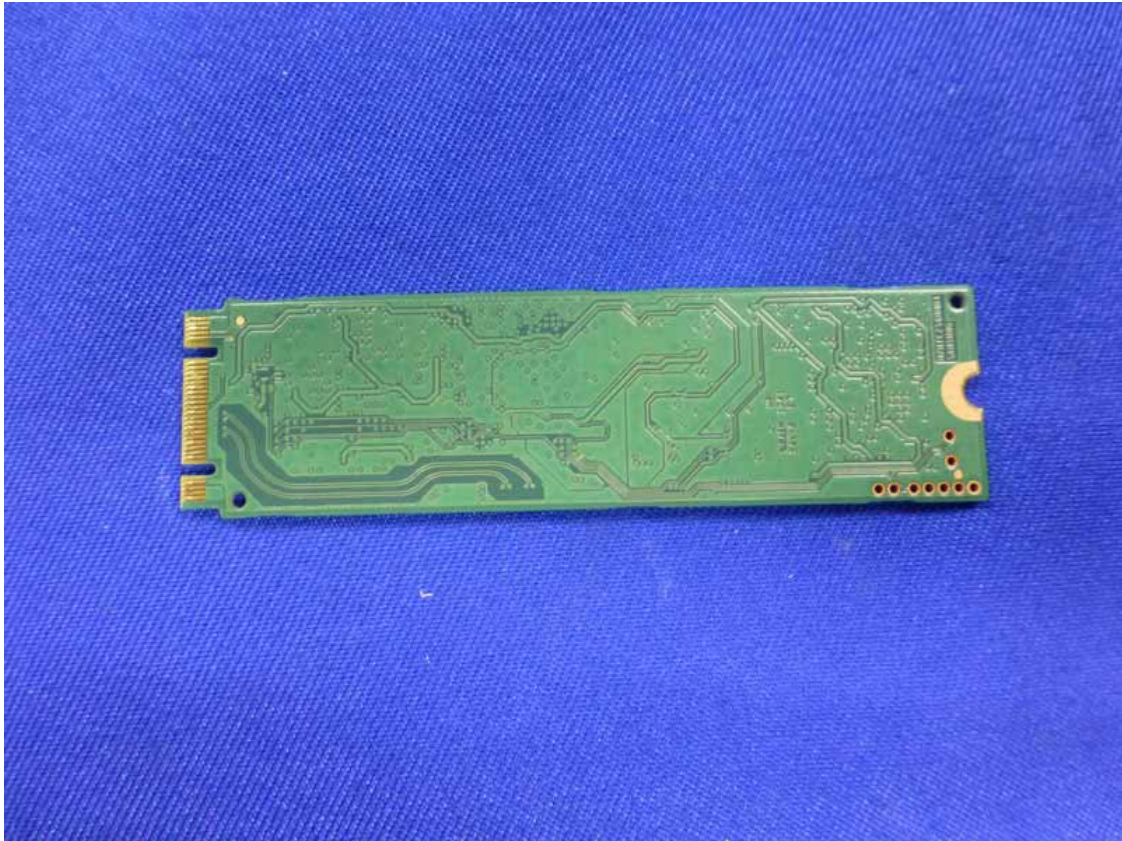
**Figure 19**  
Wifi Card of the EUT



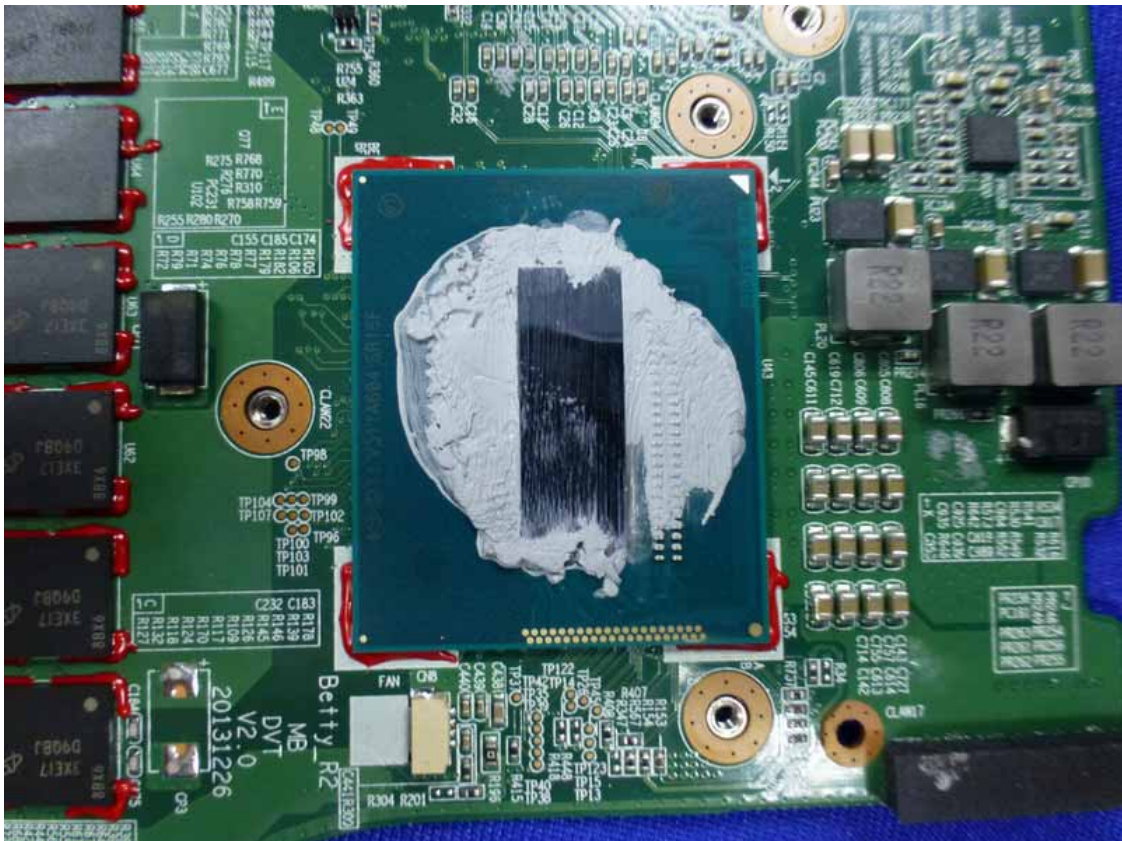
**Figure 20**  
HDD of the EUT



**Figure 21**  
HDD of the EUT

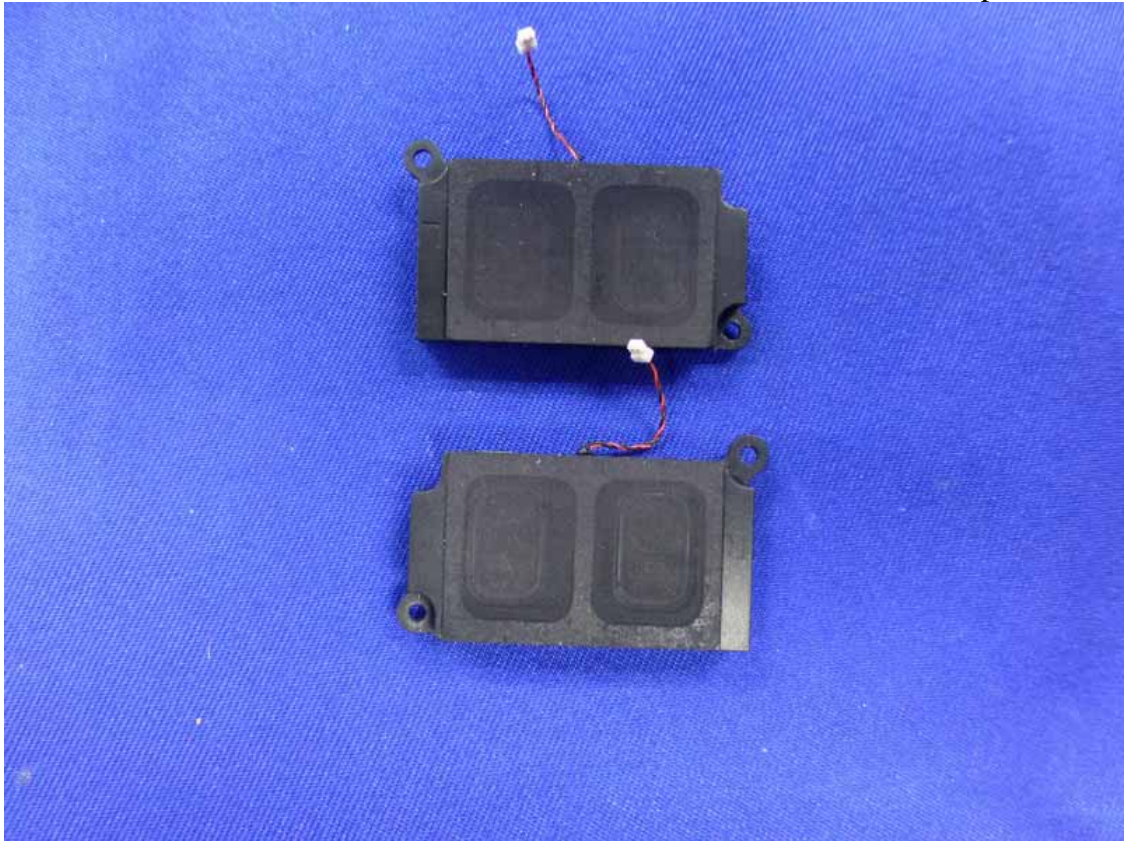


**Figure 22**  
CPU of the EUT





**Figure 23**  
Speaker of the EUT



**Figure 24**  
Speaker of the EUT



**Figure 25**  
Battery of the EUT



**Figure 26**  
Battery of the EUT



**Figure 27**  
Battery of the EUT



**Figure 28**  
RC30-0099, Power Adapter



**Figure 29**  
RC30-0099, Power Adapter



**Figure 30**  
RC30-0083, Power Adapter



**Figure 31**  
RC30-0083, Power Adapter

