

## P01 BLE\_1M\_Ch39\_Rear Face\_0cm

### DUT: EUT

Communication System: BT; Frequency: 2480 MHz; Duty Cycle: 1:1

Medium: H2450 Medium parameters used:  $f = 2480$  MHz;  $\sigma = 1.853$  S/m;  $\epsilon_r = 37.919$ ;  $\rho = 1000$  kg/m<sup>3</sup>

#### DASY5 Configuration:

- Probe: EX3DV4 - SN7506; ConvF(7.85, 7.85, 7.85) @ 2480 MHz; Calibrated: 2022/5/31
- Sensor-Surface: 1.4mm (Mechanical Surface Detection)
- Electronics: DAE4 Sn1557; Calibrated: 2022/1/20
- Phantom: SAM 1; Type: QD 000 P40 CB; Serial: 1961
- Measurement SW: DASY52, Version 52.10 (4); SEMCAD X Version 14.6.14 (7483)

- **Area Scan (81x121x1):** Interpolated grid: dx=1.200 mm, dy=1.200 mm  
Maximum value of SAR (interpolated) = 0.111 W/kg

- **Zoom Scan (7x7x7)/Cube 0:** Measurement grid: dx=5mm, dy=5mm, dz=5mm

Reference Value = 3.254 V/m; Power Drift = 0.03 dB

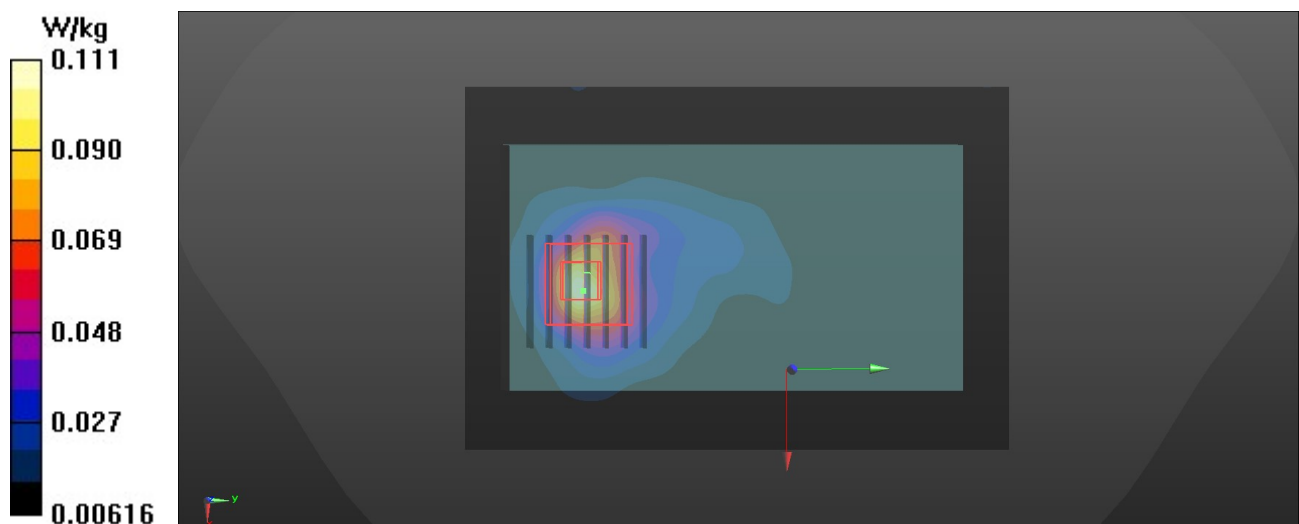
Peak SAR (extrapolated) = 0.150 W/kg

**SAR(1 g) = 0.067 W/kg; SAR(10 g) = 0.032 W/kg**

Smallest distance from peaks to all points 3 dB below = 8 mm

Ratio of SAR at M2 to SAR at M1 = 47%

Maximum value of SAR (measured) = 0.115 W/kg



## P02 2.4G SRD\_2M\_Ch78\_Rear Face\_0cm

### DUT: EUT

Communication System: SRD; Frequency: 2480 MHz; Duty Cycle: 1:1

Medium: H2450 Medium parameters used:  $f = 2480$  MHz;  $\sigma = 1.853$  S/m;  $\epsilon_r = 37.919$ ;  $\rho = 1000$  kg/m<sup>3</sup>

#### DASY5 Configuration:

- Probe: EX3DV4 - SN7506; ConvF(7.85, 7.85, 7.85) @ 2480 MHz; Calibrated: 2022/5/31
- Sensor-Surface: 1.4mm (Mechanical Surface Detection)
- Electronics: DAE4 Sn1557; Calibrated: 2022/1/20
- Phantom: SAM 1; Type: QD 000 P40 CB; Serial: 1961
- Measurement SW: DASY52, Version 52.10 (4); SEMCAD X Version 14.6.14 (7483)

- **Area Scan (81x121x1):** Interpolated grid: dx=1.200 mm, dy=1.200 mm  
Maximum value of SAR (interpolated) = 0.100 W/kg

- **Zoom Scan (7x7x7)/Cube 0:** Measurement grid: dx=5mm, dy=5mm, dz=5mm

Reference Value = 2.803 V/m; Power Drift = 0.08 dB

Peak SAR (extrapolated) = 0.148 W/kg

**SAR(1 g) = 0.067 W/kg; SAR(10 g) = 0.033 W/kg**

Smallest distance from peaks to all points 3 dB below = 7.1 mm

Ratio of SAR at M2 to SAR at M1 = 48.2%

Maximum value of SAR (measured) = 0.114 W/kg

