

User Manual
RAZER
RZ01-0155

CONFIDENTIAL

The perfect complement for gaming on the go, is a mouse that embodies the exact same qualities – portability without compromising on power. The Razer Orochi pushes boundaries by giving you gaming-grade performance in a compact and comfortable package. With up to 100 hours of battery life and the dual wired/wireless Bluetooth 4.0 technology, the Razer Orochi delivers gaming grade performance in wired mode, while being incredibly portable. Powered by an 8,200 DPI laser sensor - the most precise found in a notebook mouse to date - the Razer Orochi has exacting accuracy, so you'll always have the competitive edge even when you're gaming on the go.

CONFIDENTIAL

1. PACKAGE CONTENTS / SYSTEM REQUIREMENTS

PACKAGE CONTENTS

- Razer Orochi 2013
- 2x AA Batteries
- USB Cable
- Travel Pouch
- Important Product Information Guide

SYSTEM REQUIREMENTS

- PC / Mac with a free USB Port
- Windows® 8 / Windows® 7 / Windows Vista® / Windows® XP (32-bit) / Mac OS X (10.8-10.10)
- Bluetooth® Smart Ready
- Internet connection
- 100 MB of free hard disk space

CONFIDENTIAL

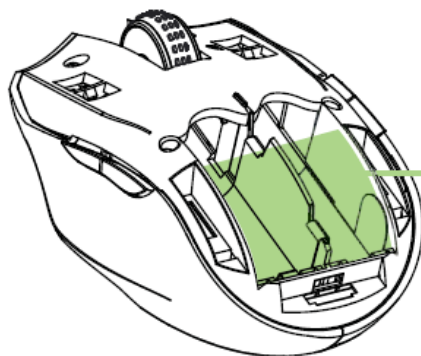
2. REGISTRATION / TECHNICAL SUPPORT

REGISTRATION

Visit www.razerzone.com/razer-id to sign up for a Razer ID now to get a wide range of Razer benefits. For example, get real-time information on your product's warranty status via Razer Synapse. To learn more about Razer Synapse and all its features, visit www.razerzone.com/synapse.

If you already have a Razer ID, register your product by clicking on your email address within the Razer Synapse application and select *Warranty Status* from the dropdown list.

To register your product online, visit www.razerzone.com/registration. Please note that you will not be able to view your warranty status if you register via the website.



*Your product's serial number
can be found here.*

TECHNICAL SUPPORT

What you'll get:

- 2 years limited manufacturer's warranty.
- Free online technical support at www.razersupport.com.

3. TECHNICAL SPECIFICATIONS

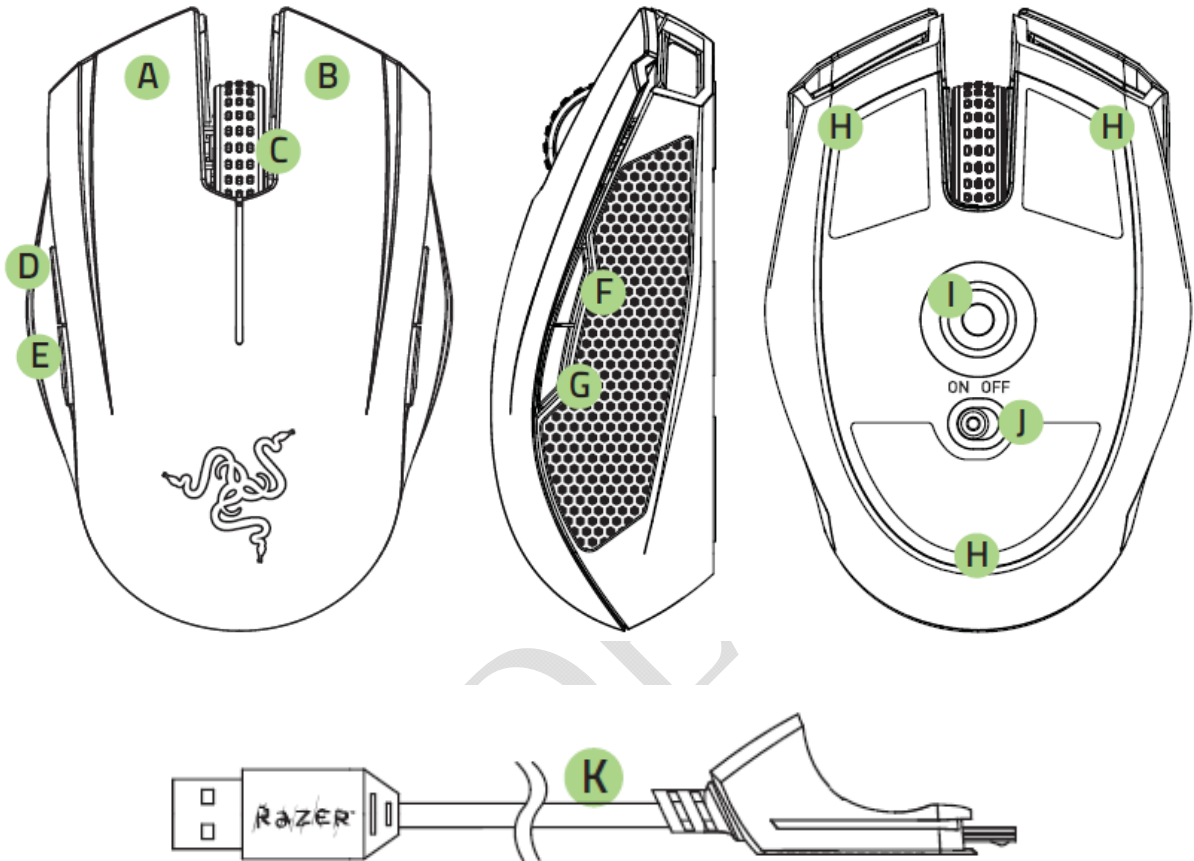
TECHNICAL SPECIFICATIONS

- Dual wired/wireless Bluetooth 4.0 technology
- 1,000 Hz Ultrapolling (Wired) / 125 Hz Ultrapolling (Wireless)
- 1 ms response time (Wired) / 8 ms response time (Wireless)
- 8,200 DPI 4G laser sensor
- 210 inches per second / 50 G acceleration
- Battery life: Approximately 100 hrs (continuous gaming) or 3 months (normal usage)
- Ambidextrous form factor with textured rubber side grips
- Chroma lighting with true 16.8 million customizable color options
- Inter-device color synchronization
- Seven independently programmable buttons
- Razer Synapse enabled
- 1 m / 3.28 ft braided fiber USB cable

APPROXIMATE SIZE & WEIGHT:

- Length 99 mm / 3.90"
- Width 67 mm / 2.64"
- Height 35 mm / 1.38"
- Weight 68 g / 0.15 lbs

4. DEVICE LAYOUT

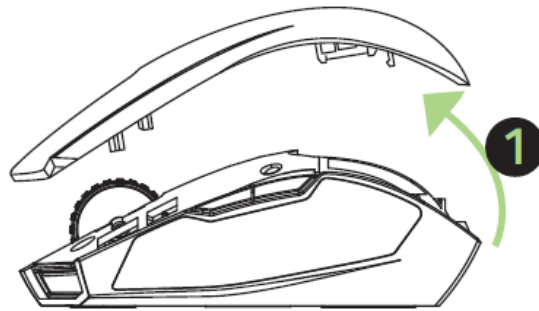


- A. Left mouse button
- B. Right mouse button
- C. Scroll wheel
- D. Mouse button 5
- E. Mouse button 4
- F. Sensitivity stage up
- G. Sensitivity stage down
- H. Ultraslick mouse feet
- I. 100、4200、8200 DPI 4G laser sensor
- J. Power on / off switch
- K. USB cable

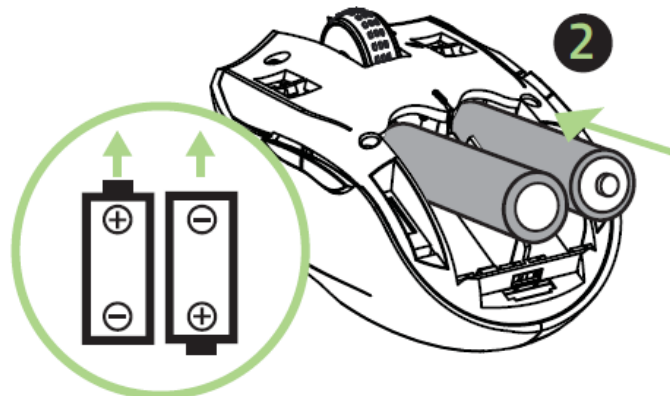
5. SETTING UP YOUR RAZER OROCHI

WIRELESS MODE

1. Remove the top cover of the Razer Orochi.

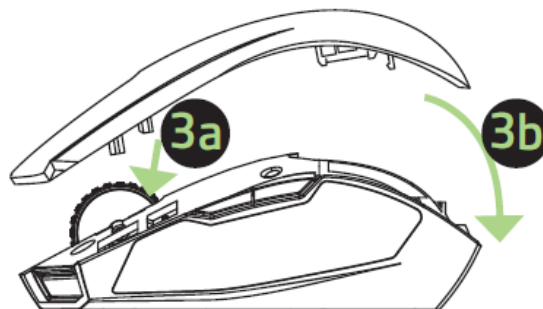


2. Insert the batteries* into the Razer Orochi following the directions indicated.

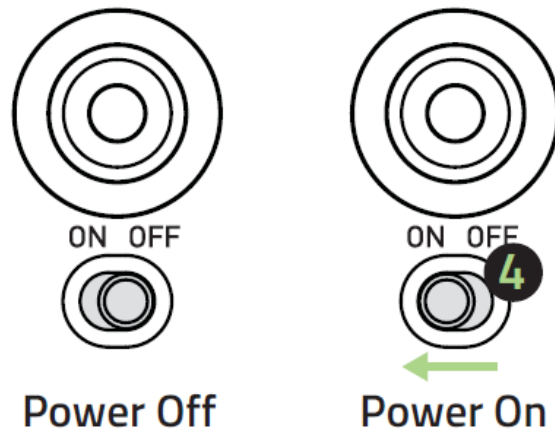


**Caution: For your safety, use only alkaline batteries and do not mix old batteries with new ones.*

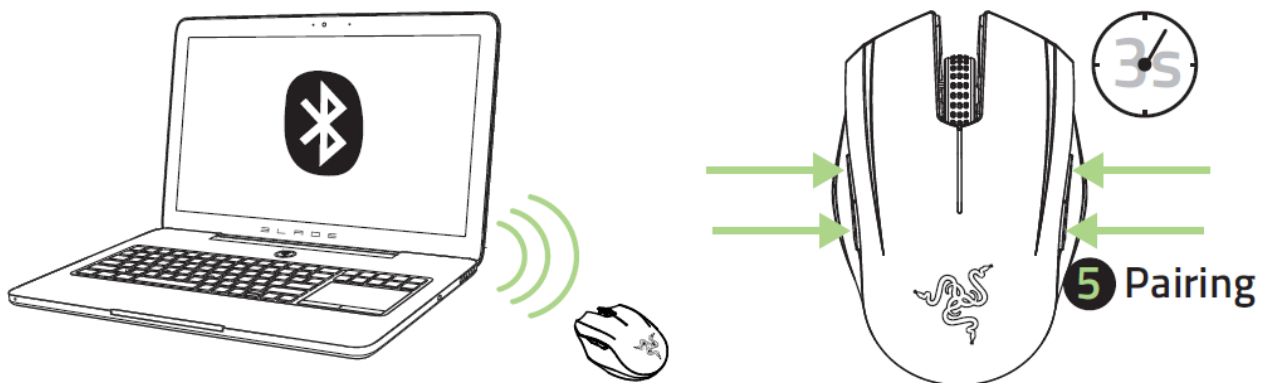
3. Reattach the top cover onto the Razer Orochi. Please ensure it is secured.



4. Switch on the Razer Orochi.



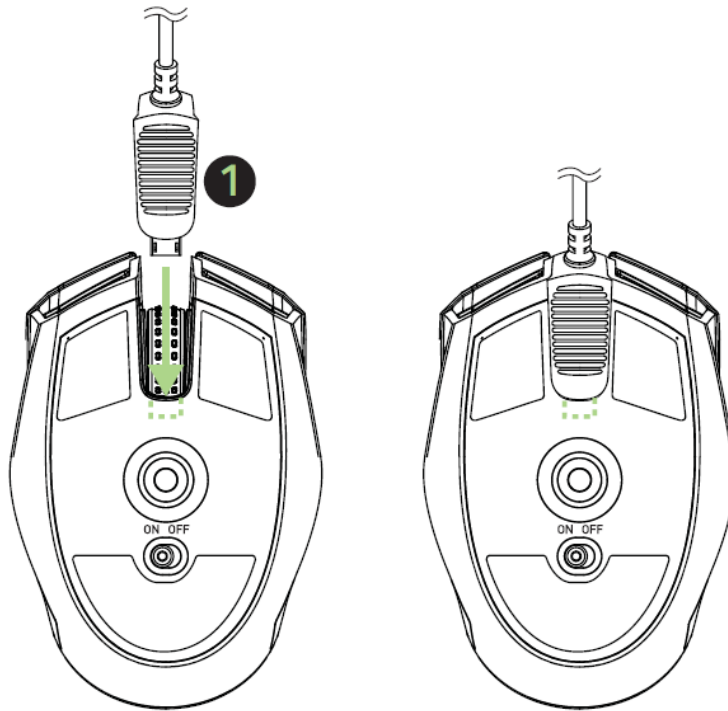
5. Please ensure that Bluetooth is activated on your computer. “Add a Bluetooth device” by following the instructions for your operating system. Activate the pairing process by depressing all **four side buttons together** on the Razer Orochi for **five seconds**. The indicator lights on the top of the Razer Orochi will blink in green to indicate the pairing process.



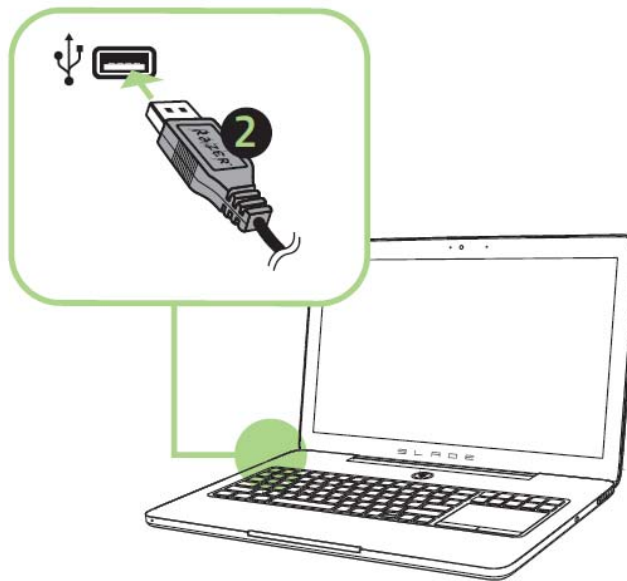
6. When the pairing process is completed, the indicator light will stop blinking. Your Razer Orochi is then ready for use in wireless mode.

WIRED MODE

1. Connect the micro-USB end of the cable to the Razer Orochi.



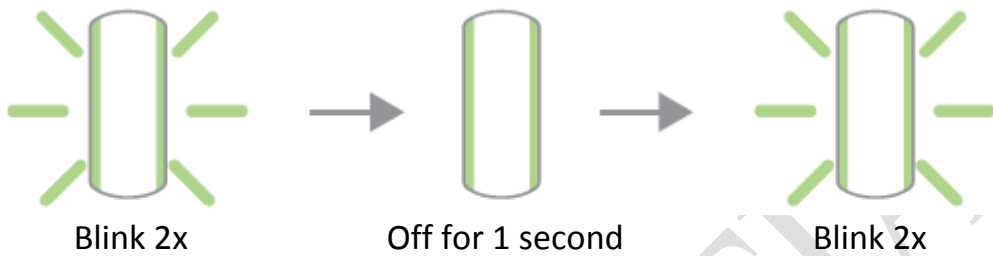
2. Plug the mouse into the USB port of your computer. The Razer Orochi is then ready for use as a high performance wired gaming mouse.



BATTERY / PAIRING INDICATOR BEHAVIOR

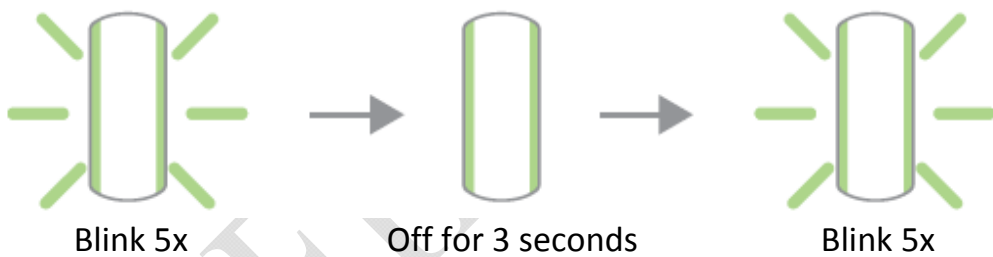
The Razer Orochi uses a specific lighting sequence on its scroll wheel to indicate its current battery status.

Low Power Indication:



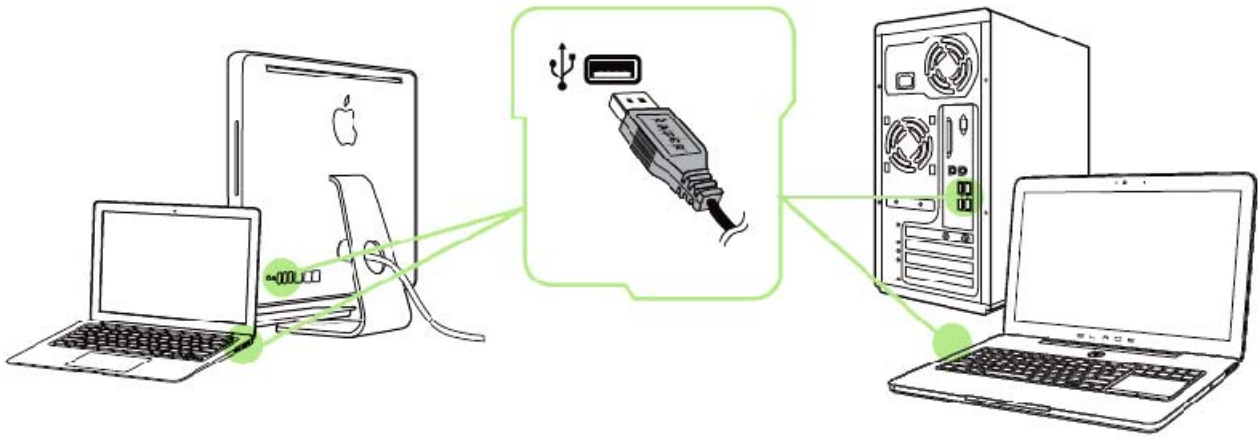
This lighting sequence will repeat every 10 minutes until the power status changes to critical, the batteries are replaced, or the mouse is connected to the PC via USB cable.

Critical Power Indication:



This lighting sequence will repeat every 3 minutes until the batteries are drained, the batteries are replaced, or the mouse is connected to the PC via the USB cable.

6. INSTALLING YOUR RAZER OROCHI



Step 1: Connect your Razer device to the USB port of your computer.

Step 2: Install Razer Synapse when prompted* or download the installer from www.razerzone.com/synapse.

Step 3: Register for a Razer ID or log in to Synapse with an existing account.

**Applicable for Windows 8 or later.*

Note: By default, the Razer Orochi is set to spectrum cycling. To customize the lighting, please install Razer Synapse.

7. SAFETY AND MAINTENANCE

SAFETY GUIDELINES

In order to achieve maximum safety while using your Razer Orochi, we suggest that you adopt the following guidelines:

1. Avoid looking directly at the tracking beam of your mouse or pointing the beam in anyone else's eye. Note that the tracking beam is NOT visible to the naked human eye and is set on an Always-On mode.
2. Should you have trouble operating the device properly and troubleshooting does not work, unplug the device and contact the Razer hotline or go to www.razersupport.com for support. Do not attempt to service or fix the device yourself at any time.
3. Do not take apart the device (doing so will void your warranty) and do not attempt to operate it under abnormal current loads.
4. Keep the device away from liquid, humidity or moisture. Operate the device only within the specific temperature range of 0°C (32°F) to 40°C (104°F). Should the temperature exceed this range, unplug and/or switch off the device in order to let the temperature stabilize to an optimal level.

COMFORT

Research has shown that long periods of repetitive motion, improper positioning of your computer peripherals, incorrect body position, and poor habits may be associated with physical discomfort and injury to nerves, tendons, and muscles. Below are some guidelines to avoid injury and ensure optimum comfort while using your Razer Orochi.

1. Position your keyboard and monitor directly in front of you with your mouse next to it. Place your elbows next to your side, not too far away and your mouse within easy reach.
2. Adjust the height of your chair and table so that the keyboard and mouse are at or below elbow height.

3. Keep your feet well supported, posture straight and your shoulders relaxed.
4. During gameplay, relax your wrist and keep it straight. If you do the same tasks with your hands repeatedly, try not to bend, extend or twist your hands for long periods.
5. Do not rest your wrists on hard surfaces for long periods. Use a wrist rest to support your wrist while gaming.
6. Customize the buttons on your mouse to suit your style of gaming in order to minimize repetitive or awkward motions while gaming.
7. Make sure that your mouse fits comfortably in your hands.
8. Do not sit in the same position all day. Get up, step away from your desk and do exercises to stretch your arms, shoulders, neck and legs.
9. If you should experience any physical discomfort while using your mouse, such as pain, numbness, or tingling in your hands, wrists, elbows, shoulders, neck or back, please consult a qualified medical doctor immediately.

MAINTENANCE AND USE

The Razer Orochi requires minimum maintenance to keep it in optimum condition. Once a month we recommend you unplug the device from the USB port and clean it using a soft cloth or cotton swab with a bit of warm water to prevent dirt buildup. Do not use soap or harsh cleaning agents.

To get the ultimate experience in movement and control, we highly recommend a premium Mouse Mat from Razer. Some surfaces will cause undue wear on the feet requiring constant care and eventual replacement.

Do note that the sensor of the Razer Orochi is 'tuned' or optimized especially for the Razer Mouse Mats. This means that the sensor has been tested extensively to confirm that the Razer Orochi reads and tracks best on Razer Mouse Mats.

8. LEGALESE

COPYRIGHT AND INTELLECTUAL PROPERTY INFORMATION

©2015 Razer Inc. All Rights Reserved. Razer™, the Razer Triple-Headed Snake logo, the Razer “distressed word” logo and other trademarks set out herein are owned or controlled by Razer Inc. and/or its affiliated companies, pending or registered in the United States and other countries.

Windows and the Windows logo are trademarks of the Microsoft group of companies.

Mac OS®, Mac® and the Mac logo® are trademarks or registered trademarks of Apple Inc.

Razer Inc. and its affiliate companies (“Razer”) may own or control copyright, trademarks, trade secrets, patents, patent applications, or other intellectual property rights (whether registered or unregistered) concerning the product in this guide. Furnishing of this guide does not give you a license to any such copyright, trademark, patent or other intellectual property right. The Razer Orochi (the “Product”) may differ from pictures whether on packaging or otherwise. Razer assumes no responsibility for such differences or for any errors that may appear. Information contained herein is subject to change without notice.

LIMITED PRODUCT WARRANTY

For the latest and current terms of the Limited Product Warranty, please visit www.razerzone.com/warranty.

LIMITATION OF LIABILITY

Razer shall in no event be liable for any lost profits, loss of information or data, special, incidental, indirect, punitive or consequential or incidental damages, arising in any way out of distribution of, sale of, resale of, use of, or inability to use the Product. In no event shall Razer’s liability exceed the retail purchase price of the Product.

COSTS OF PROCUREMENT

For the avoidance of doubt, in no event will Razer be liable for any costs of procurement unless it has been advised of the possibility of such damages, and in no case shall Razer be liable for any costs of procurement liability exceeding the retail purchase price of the Product.

GENERAL

These terms shall be governed by and construed under the laws of the jurisdiction in which the Product was purchased. If any term herein is held to be invalid or unenforceable, then such term (in so far as it is invalid or unenforceable) shall be given no effect and deemed to be excluded without invalidating any of the remaining terms. Razer reserves the right to amend any term at any time without notice.

FCC Statement

This equipment has been tested and found to comply with the limits for a Class B digital device, pursuant to part 15 of the FCC Rules. These limits are designed to provide reasonable protection against harmful interference in a residential installation. This equipment generates uses and can radiate radio frequency energy and, if not installed and used in accordance with the instructions, may cause harmful interference to radio communications. However, there is no guarantee that interference will not occur in a particular installation. If this equipment does cause harmful interference to radio or television reception, which can be determined by turning the equipment off and on, the user is encouraged to try to correct the interference by one or more of the following measures:

- Reorient or relocate the receiving antenna.
- Increase the separation between the equipment and receiver.
- Connect the equipment into an outlet on a circuit different from that to which the receiver is connected.
- Consult the dealer or an experienced radio/TV technician for help.

FCC Statement

This device complies with FCC radiation exposure limits set forth for an uncontrolled environment.

This device complies with Part 15 of the FCC Rules. Operation is subject to the following two conditions: (1) this device may not cause harmful interference, and (2) this device must accept any interference received, including interference that may cause undesired operation.

Caution!

Any changes or modifications not expressly approved by the party responsible for compliance could void the user's authority to operate the equipment.

Canada Statement

This device complies with Industry Canada's licence-exempt RSSs. Operation is subject to the following two conditions:

- (1) This device may not cause interference; and
- (2) This device must accept any interference, including interference that may cause undesired operation of the device.

Le présent appareil est conforme aux CNR d'Industrie Canada applicables aux appareils radio exempts de licence. L'exploitation est autorisée aux deux conditions suivantes :

- (1) l'appareil ne doit pas produire de brouillage;
- (2) l'utilisateur de l'appareil doit accepter tout brouillage radioélectrique subi, même si le brouillage est susceptible d'en compromettre le fonctionnement.

The device meets the exemption from the routine evaluation limits in section 2.5 of RSS 102 and compliance with RSS-102 RF exposure, users can obtain Canadian information on RF exposure and compliance.

Le dispositif rencontre l'exemption des limites courantes d'évaluation dans la section 2.5 de RSS 102 et la conformité à l'exposition de RSS-102 rf, utilisateurs peut obtenir l'information canadienne sur l'exposition et la conformité de rf.