

# USER MANUAL

# USER MANUAL

---

## 3. TECHNICAL SPECIFICATIONS

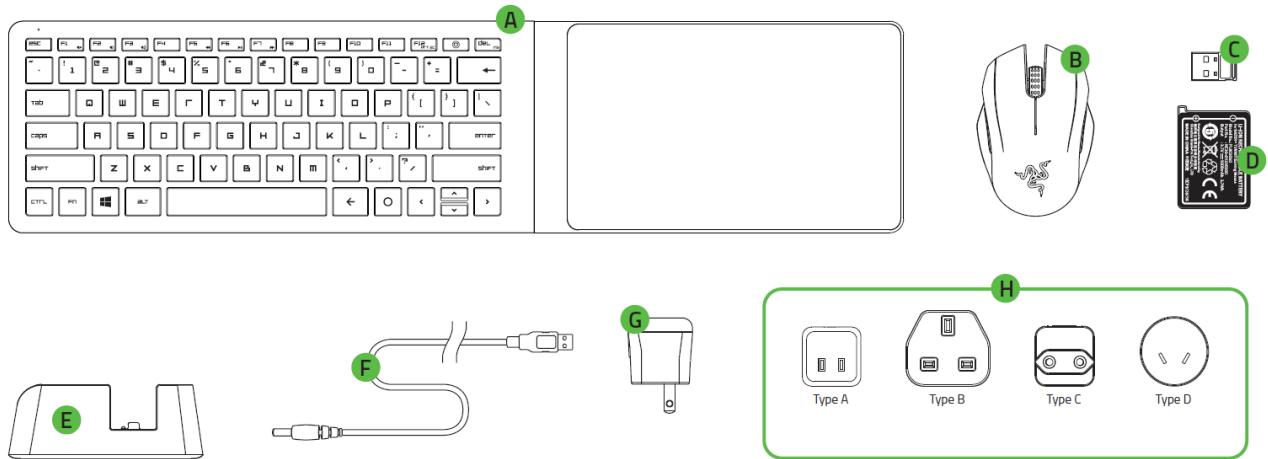
### Lapboard (RZ03-0133)

- Anti-ghosting capability for up to 10 simultaneous key presses
- Chiclet styled keycaps
- Dedicated Android buttons
- Cortex quick launch button
- Battery life of up to 4 months - The life expectancy of this battery depends upon its usage
- Battery type: Li-Po (1500 mAh)

### Mouse (RZ01-0133)

- 3500 DPI optical sensor
- Ambidextrous form factor
- 40 hours battery life for continuous use - The life expectancy of this battery depends upon its usage
- Battery type: Li-Po (1000 mAh)

## 4. DEVICE LAYOUT



- A. Keyboard
- B. Mouse
- C. RF USB Dongle
- D. Rechargeable battery for Razer Turret gaming mouse
- E. Charging dock
- F. Power connector cable
- G. Power adapter
- H. Interchangeable plugs\*


\*May include adapter plugs for specific regions

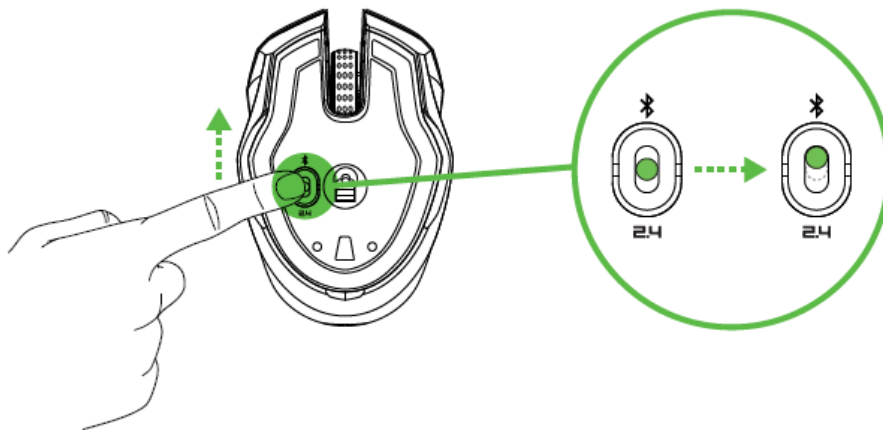
# USER MANUAL

## CONNECTING THE RAZER TURRET VIA BLUETOOTH® SMART

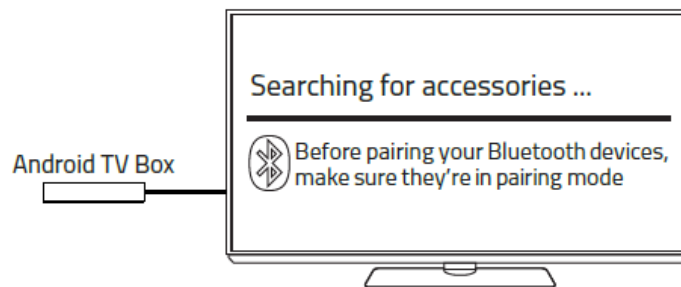
Note: The Razer Turret gaming lapboard and mouse are set to Bluetooth mode by default.

### Razer Turret gaming mouse

1. Push the slider switch on the Razer Turret mouse to . This switches the mouse on and activates pairing mode. The LED indicator will start to blink in blue.

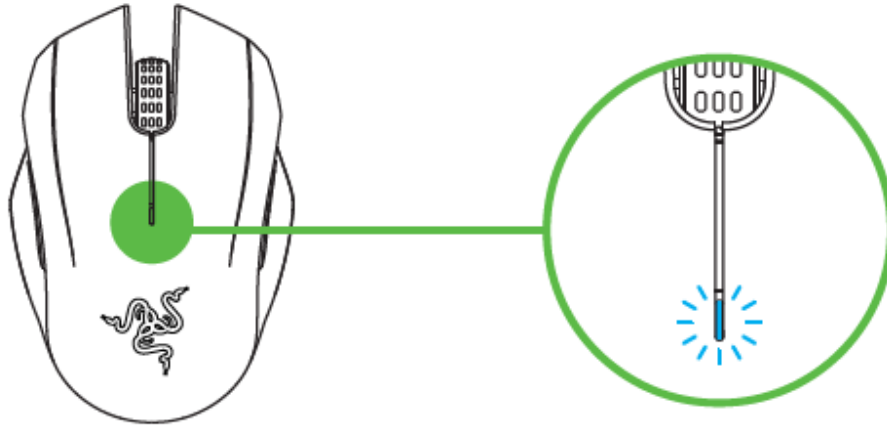


2. Activate Bluetooth® on your device and search for new Bluetooth® devices.

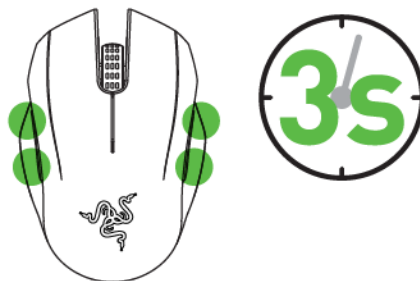


3. Select "Razer Turret gaming mouse" from the list of devices found.

4. When pairing is complete, the LED indicator will stay lit in blue for 5s before fading off.




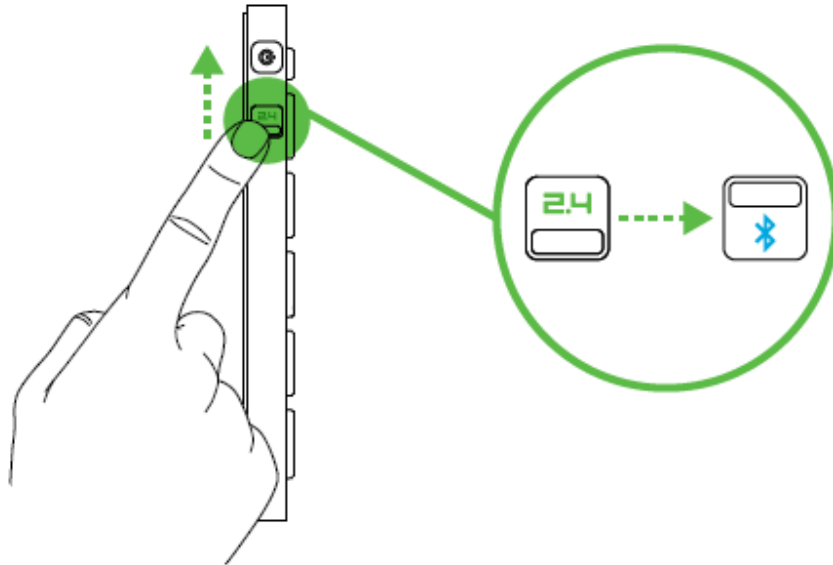
*Note: To pair your Razer Turret gaming mouse to a different device, disconnect the current Bluetooth connection from host device. Then, press and hold the 4 side buttons for 3s to manually activate pairing mode.*



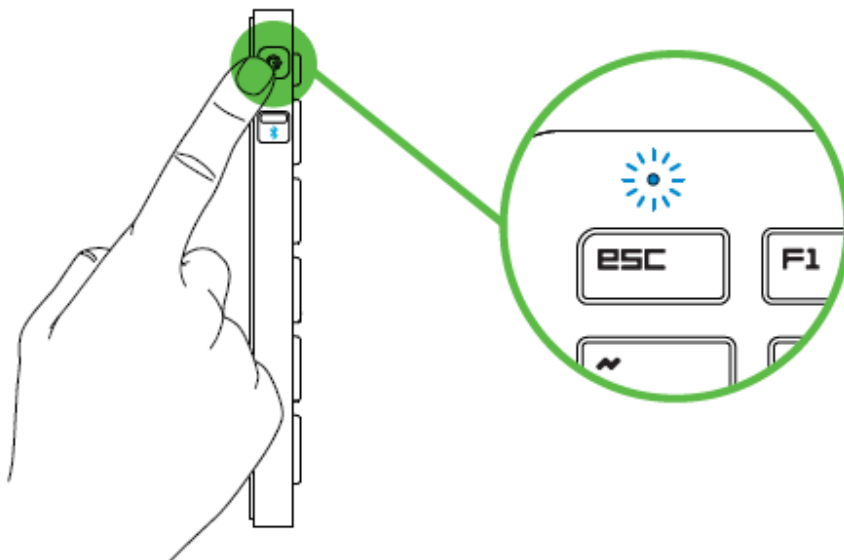
# USER MANUAL

## Razer Turret gaming lapboard

1. Push the Slider switch on the Razer Turret gaming lapboard to .



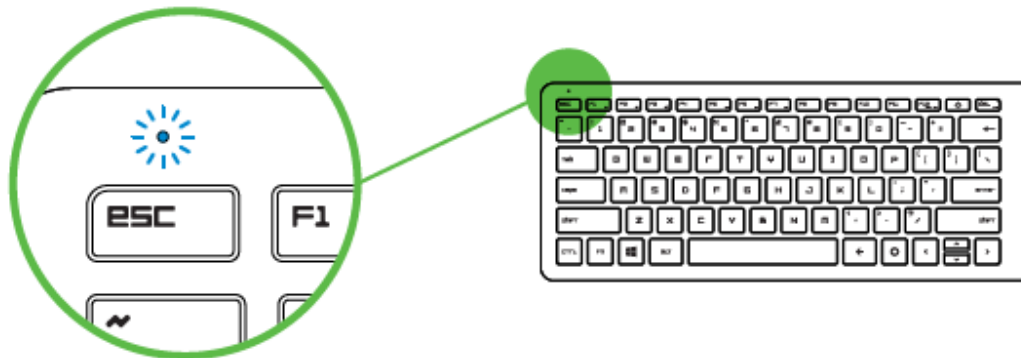
2. Press the Power button to turn the Razer Turret gaming lapboard on and activate pairing mode. The LED indicator will start to blink in blue.



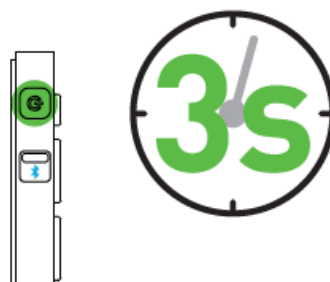
3. Activate Bluetooth® on your device and search for new Bluetooth® devices.



4. Select "Razer Turret gaming lapboard" from the list of devices found.
5. When pairing is complete, the LED indicator will stay lit in blue for 5s before fading off.



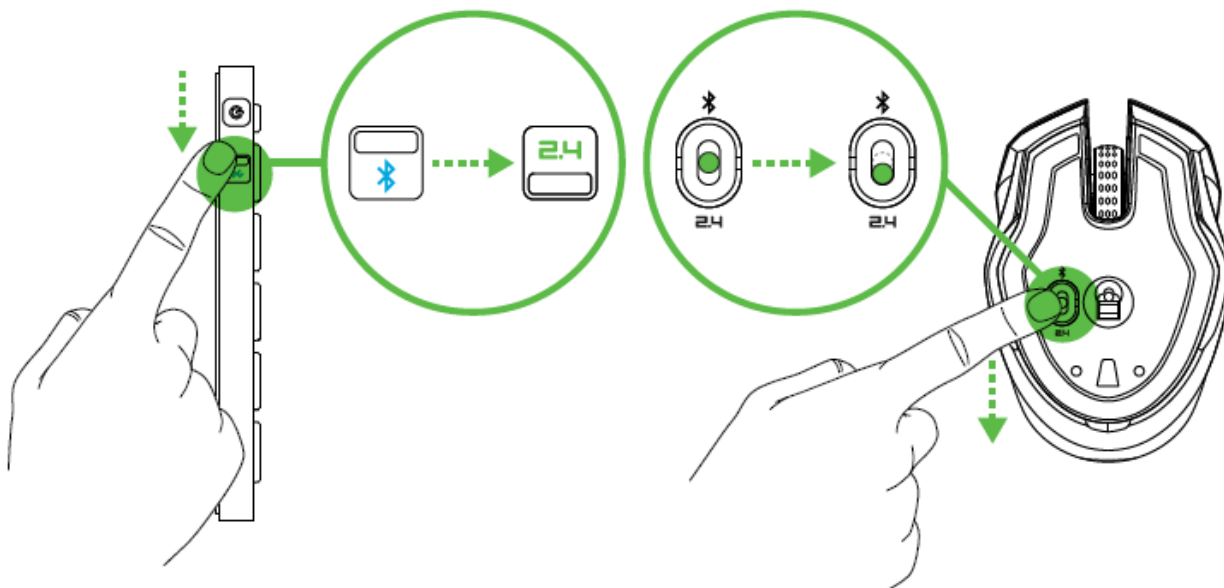
*Note: To pair your Razer Turret gaming lapboard to a different device, disconnect the current Bluetooth connection from host device. Then, press and hold the power button for 3s to manually activate pairing mode.*



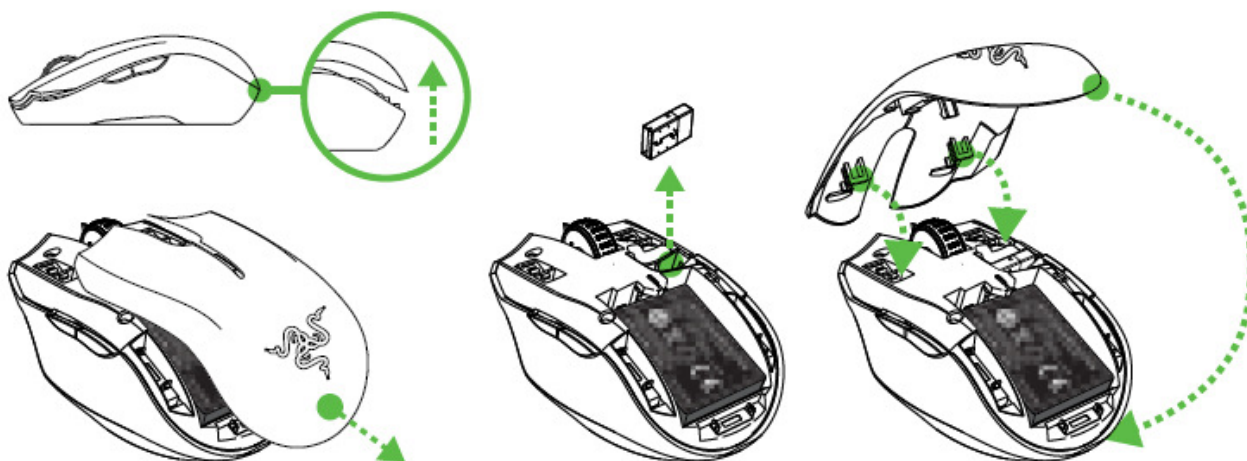
# USER MANUAL

## CONNECTING THE RAZER TURRET VIA THE WIRELESS DONGLE

1. Push the Slider switch on both the Razer Turret gaming lapboard and mouse to (2.4GHz wireless).



2. Remove the top cover of the Razer Turret gaming mouse by lifting the back of the top cover and pulling it backwards. Retrieve the USB dongle. Reattach the top cover.

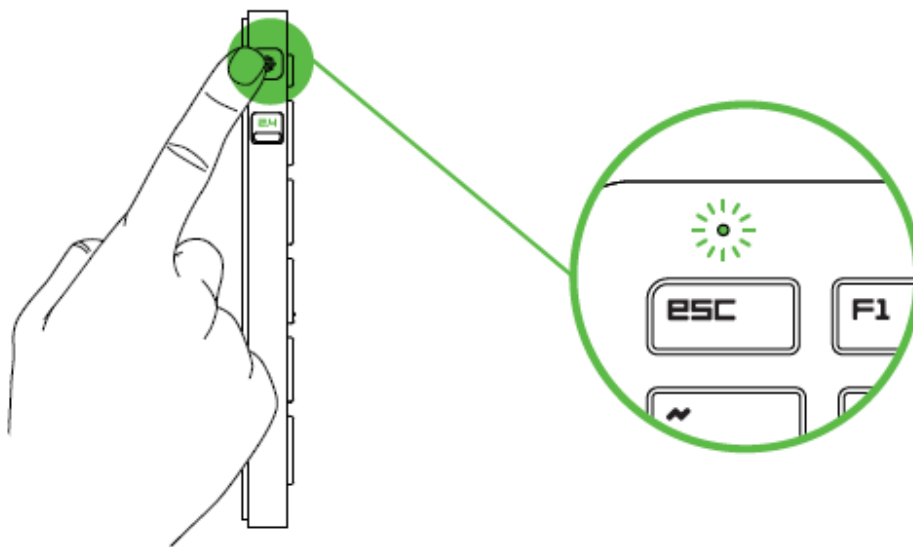




3. Plug the USB dongle to the device you wish to pair to.



4. Press the Power button to turn the Razer Turret gaming lapboard on.

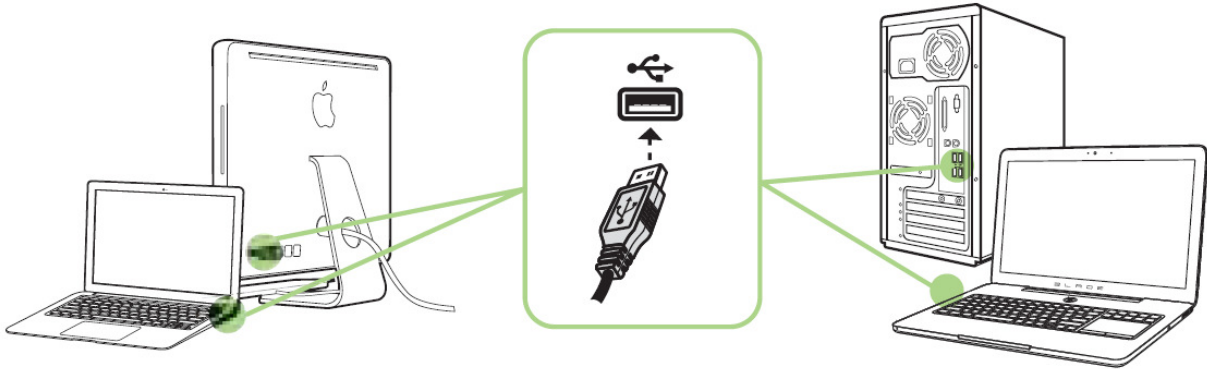


5. When successfully connected, the LED indicator will stay lit in green for 5s before fading off.

# USER MANUAL

---

## 6. INSTALLING YOUR RAZER TURRET



Step 1: Connect your Razer device to the USB port of your computer.

Step 2: Install Razer Synapse when prompted\* or download the installer from [www.razerzone.com/synapse](http://www.razerzone.com/synapse).

Step 3: Create your Razer ID or login to Synapse with your existing Razer ID.

\*Applicable for Windows 8 or later.

*Note: Razer Synapse is only available when the Razer Turret is connected to a PC.*

---

## 11. SAFETY AND MAINTENANCE

### ***IMPORTANT SAFETY & MAINTENANCE INFORMATION***

**WARNING : Failure to follow these safety instructions could result in fire, electric shock, or other injury or damage.**

Please follow these safety rules for handling your Razer Turret and for working more comfortably. Keep these guide handy for future reference by you and others.

To operate your Razer Turret safely and reduce the possibility of heat-related injuries, follow these guidelines:

1. Set up your Razer Turret and power adapter on a stable work surface that allows for adequate air circulation under and around the computer/TV.
2. Do not use or install near water, moisture, or other wet surfaces.
3. Do not use or install near any heat or naked flame sources. Do not use around radiators, stoves, fire places, candles or other hot surfaces.
4. Do not block ventilation grills or openings. Install the apparatus in a cool, dry place.
5. Clean only with a dry or damp cloth. Unplug the apparatus before cleaning and do not use aerosol or liquid cleaning agents.
6. Do not insert or push any objects into openings on the product.
7. Refer all servicing to qualified service personnel. Do not attempt to service this apparatus yourself. Removing the covers will expose you to dangerous electric currents.

# USER MANUAL

## **POWER ADAPTER FOR THE RAZER TURRET**

**NOTICE : Incorrect storage or use of your power adapter may void the manufacturer's warranty.**

This power adapter complies with the user-accessible surface temperature limits defined by the International Standard for Safety of Information Technology Equipment (IEC 60950-1).

This apparatus should only be operated from the type of power source indicated on the label. If you are unsure of the power source in the location you intend to operate the apparatus please consult the local power company or a qualified technician. The use of AC Plug Adapters is cautioned because it can allow the product to be plugged into voltages in which the product was not designed to operate. If you are unsure of the correct operational voltage, please contact your local distributor and/or retailer.

1. Use only the power adapter that came with your Razer Turret, or the Razer-authorized power adapter that is compatible with this product.
2. The power adapter is equipped with exchangeable adapter plug, use only the appropriate adapter plug for your region.
3. Make sure the exchangeable adapter plug is fully inserted into the power adapter before plugging the adapter into a power outlet.
4. The power adapter may become very warm during normal use. Never place anything over the power adapter when operating your apparatus.
5. Unplug this apparatus during lightning storms or when unused for extended periods of time to further protect the apparatus.
6. Protect the power cord from being walked on or pinched, particularly at plugs, convenience receptacles, or the point where they exit from the apparatus.
7. Do not overload wall electricity outlets, extension cords and plugs. This may result in fire or electrical shock.
8. Disconnect the power adapter and disconnect any other cables if any of the following conditions exists:
  - You want to clean the case
  - The power cord or plug becomes frayed or otherwise damaged.
  - Your Razer Turret or power adapter is exposed to rain, excessive moisture, or liquid spilled into the case.
  - Your Razer Turret or power adapter has been dropped, the case has been damaged, or you suspect that service or repair is required.

## ***SAFETY GUIDELINES***

In order to achieve maximum safety while using your Razer Turret, we suggest that you adopt the following guidelines:

1. Should you have trouble operating the device properly and troubleshooting does not work, unplug the device and contact the Razer hotline or go to [www.razersupport.com](http://www.razersupport.com) for support. Do not attempt to service or fix the device yourself at any time.
2. Do not take apart the device (doing so will void your warranty) and do not attempt to operate it under abnormal current loads.
3. Keep the device away from liquid, humidity or moisture. Operate the device only within the specific temperature range of 0°C (32°F) to 40°C (104°F). Should the temperature exceed this range, unplug and/or switch off the device in order to let the temperature stabilize to an optimal level.

# USER MANUAL

## **COMFORT**

Research has shown that long periods of repetitive motion, improper positioning of your computer peripherals, incorrect body position, and poor habits may be associated with physical discomfort and injury to nerves, tendons, and muscles. Below are some guidelines to avoid injury and ensure optimum comfort while using your Razer Turret.

1. Position your keyboard and monitor directly in front of you with your mouse next to it. Place your elbows next to your side, not too far away and your Keyboard within easy reach.
2. Keep your feet well supported, posture straight and your shoulders relaxed.
3. During gameplay, relax your wrist and keep it straight. If you do the same tasks with your hands repeatedly, try not to bend, extend or twist your hands for long periods.
4. Do not rest your wrists on hard surfaces for long periods. Use a wrist rest to support your wrist while gaming.
5. Do not sit in the same position all day. Get up and do exercises to stretch your arms, shoulders, neck and legs.
6. If you should experience any physical discomfort while using your device, such as pain, numbness, or tingling in your hands, wrists, elbows, shoulders, neck or back, please consult a qualified medical doctor immediately.

## **MAINTENANCE AND USE**

The Razer Turret requires minimum maintenance to keep it in optimum condition. Once a month we recommend you unplug the device from the computer and clean it using a soft cloth or cotton swab with a bit of warm water to prevent dirt buildup. Do not use soap or harsh cleaning agents.

---

## LEGALESE

### ***COPYRIGHT AND INTELLECTUAL PROPERTY INFORMATION***

©2015 Razer Inc. Patent Pending. All rights reserved. Razer, For Gamers By Gamers, and the triple-headed snake logo are trademarks or registered trademarks of Razer Inc. and/or affiliated companies in the United States or other countries. All other trademarks are the property of their respective owners. Actual product may differ from pictures. Information is correct at time of printing. Windows and the Windows logo are trademarks of the Microsoft group of companies.

Android™ and Android TV™ are trademarks of Google Inc.

The Bluetooth word mark and logos are owned by the Bluetooth SIG. Inc. and any use of such marks by Razer is under license.

Razer Inc. (“Razer”) may have copyright, trademarks, trade secrets, patents, patent applications, or other intellectual property rights (whether registered or unregistered) concerning the product in this guide. Furnishing of this guide does not give you a license to any such copyright, trademark, patent or other intellectual property right. The Razer Turret (the “Product”) may differ from pictures whether on packaging or otherwise. Razer assumes no responsibility for such differences or for any errors that may appear. Information contained herein is subject to change without notice.

### ***LIMITED PRODUCT WARRANTY***

For the latest and current terms of the Limited Product Warranty, please visit [www.razerzone.com/warranty](http://www.razerzone.com/warranty).

### ***LIMITATION OF LIABILITY***

Razer shall in no event be liable for any lost profits, loss of information or data, special, incidental, indirect, punitive or consequential or incidental damages, arising in any way out of distribution of, sale of, resale of, use of, or inability to use the Product. In no event shall Razer’s liability exceed the retail purchase price of the Product.

# USER MANUAL

## ***COSTS OF PROCUREMENT***

For the avoidance of doubt, in no event will Razer be liable for any costs of procurement unless it has been advised of the possibility of such damages, and in no case shall Razer be liable for any costs of procurement liability exceeding the retail purchase price of the Product.

## ***GENERAL***

These terms shall be governed by and construed under the laws of the jurisdiction in which the Product was purchased. If any term herein is held to be invalid or unenforceable, then such term (in so far as it is invalid or unenforceable) shall be given no effect and deemed to be excluded without invalidating any of the remaining terms. Razer reserves the right to amend any term at any time without notice.



## **REGULATORY & COMPLIANCE INFORMATION**

### **FCC DECLARATION OF CONFORMANCE**

This equipment has been tested and found to comply with the limits for a Class B provide reasonable protection against harmful interference in a residential installation. This equipment generates, uses and can radiate radio frequency energy and, if not installed and used in accordance with the instructions, may cause harmful interference to radio communications. However, there is no guarantee that interference will not occur in a particular installation. If this equipment does cause harmful interference to radio or television reception, which can be determined by turning the equipment off and on, the user is encouraged to try to correct the interference by one or more of the following measures:

- Reorient or relocate the receiving antenna.
- Increase the separation between the equipment and the receiver.
- Connect the equipment into an outlet on a circuit different from that to which the receiver is connected.
- Consult the dealer or an experienced radio TV technician for help.

For more information, refer to the online help system on [www.razerzone.com](http://www.razerzone.com).

### **FCC CAUTION STATEMENT**

Any changes or modifications not expressly approved by the party responsible for compliance could void the user's authority to operate this equipment.

This device complies with Part 15 of the FCC Rules. Operation is subject to the following two conditions:

- (1) This device may not cause harmful interference, and
- (2) This device must accept any interference received, including interference that may cause undesired operation.

### **FCC Radiation Exposure Statement**

This equipment complies with FCC radiation exposure limits set forth for an uncontrolled environment. End users must follow the specific operating instructions for satisfying RF exposure compliance. This transmitter must not be co-located or operating in conjunction with any other antenna or transmitter.

# USER MANUAL

## INDUSTRY CANADA STATEMENT

This device complies with Industry Canada's licence-exempt RSSs. Operation is subject to the following two conditions:

- (1) This device may not cause interference; and
- (2) This device must accept any interference, including interference that may cause undesired operation of the device.

Le présent appareil est conforme aux CNR d'Industrie Canada applicables aux appareils radio exempts de licence. L'exploitation est autorisée aux deux conditions suivantes :

- (1) l'appareil ne doit pas produire de brouillage;
- (2) l'utilisateur de l'appareil doit accepter tout brouillage radioélectrique subi, même si le brouillage est susceptible d'en compromettre le fonctionnement.

The device meets the exemption from the routine evaluation limits in section 2.5 of RSS 102 and compliance with RSS-102 RF exposure, users can obtain Canadian information on RF exposure and compliance.

Le dispositif rencontre l'exemption des limites courantes d'évaluation dans la section 2.5 de RSS 102 et la conformité à l'exposition de RSS-102 rf, utilisateurs peut obtenir l'information canadienne sur l'exposition et la conformité de rf.

This product complies with  
Appliance Efficiency Program:

