

DTD: 29062017

USER MANUAL FOR MODEL: RC30-021702

---

## PACKAGE CONTENTS / SYSTEM REQUIREMENTS

### PACKAGE CONTENTS

- Wireless Mouse (Model: RC30-021702)
- 2x AA batteries
- USB dongle (Model: DGRFG5)
- Important Product Information Guide

### SYSTEM REQUIREMENTS

#### PRODUCT REQUIREMENTS

- PC / Mac with a free USB port or Bluetooth 4.0 connectivity

#### RAZER SYNAPSE PRO REQUIREMENTS

- Windows®7 (or higher)
- Internet connection
- 500 MB of free hard disk space

#### RAZER SYNAPSE REQUIREMENTS

- Mac OS X 10.9 (or higher)
- Internet connection
- 100 MB of free hard disk space

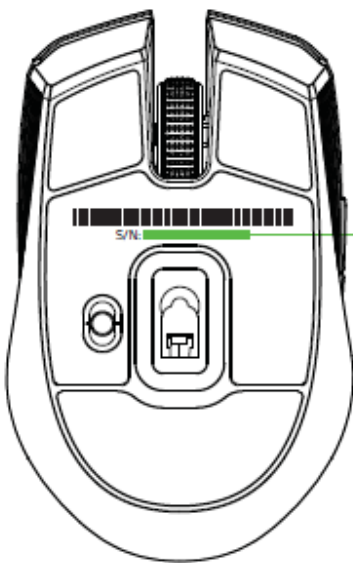
---

## REGISTRATION / TECHNICAL SUPPORT

### REGISTRATION

Register your product online at [razerzone.com/registration](https://razerzone.com/registration) to get real-time information on your product's warranty status.

If you haven't registered for a Razer ID yet, register now at [razerzone.com/razer-id](https://razerzone.com/razer-id) to get a wide range of Razer benefits.



*Your product's serial number  
can be found here.*

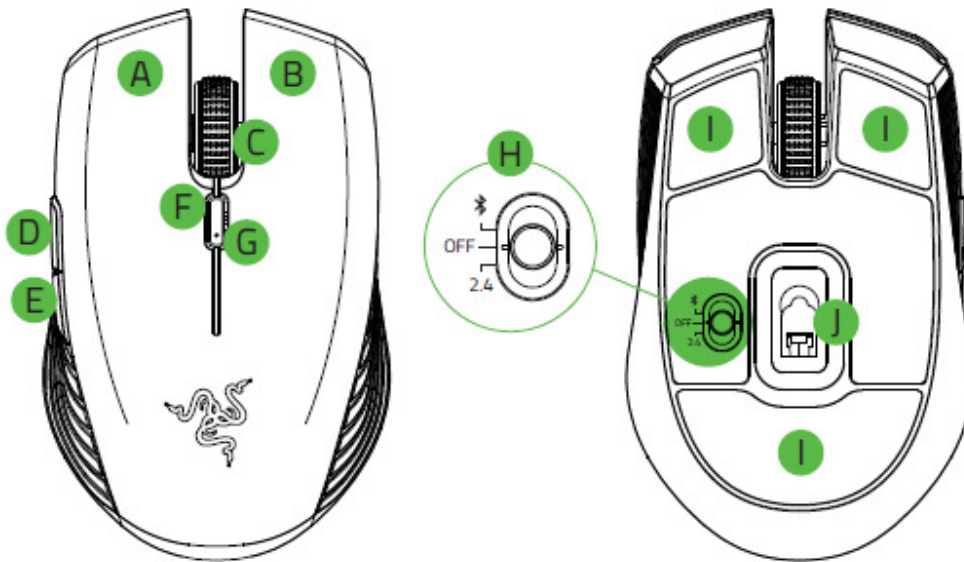
### TECHNICAL SUPPORT

What you'll get:

- 2 years limited manufacturer's warranty.
- Free online technical support at [razersupport.com](https://razersupport.com).

---

## DEVICE LAYOUT



- A. Left mouse button
- B. Right mouse button
- C. Scroll wheel
- D. Mouse button 5
- E. Mouse button 4
- F. DPI cycle button\*
- G. LED / battery indicator
- H. Slider switch
  - Bluetooth mode
  - Power off mode
  - 2.4 GHz mode
- I. Ultraslick mouse feet
- J. 7,200 DPI optical sensor

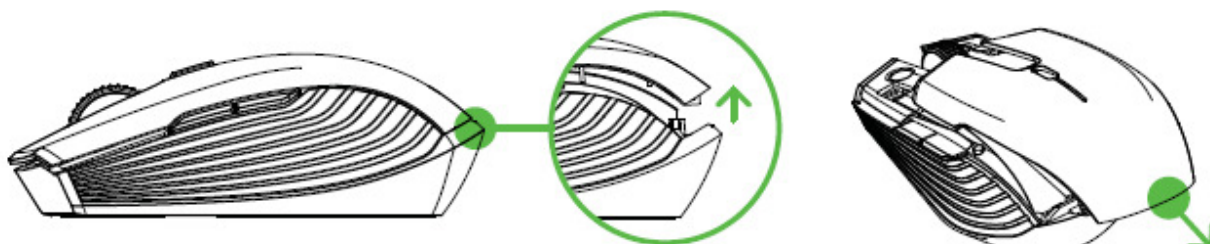
**i** Default DPI stages are as follows: 800, 1800, 2400, 3600, and 7200. The DPI stages can be customized using Razer Synapse Pro / Razer Synapse.

---

## SETTING UP YOUR RAZER ATHERIS

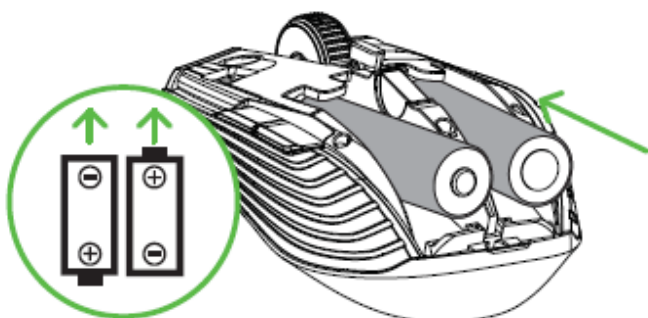
### INSERTING THE BATTERIES

1. Remove the top cover of the Razer Atheris by lifting the back of the cover then pulling it out.



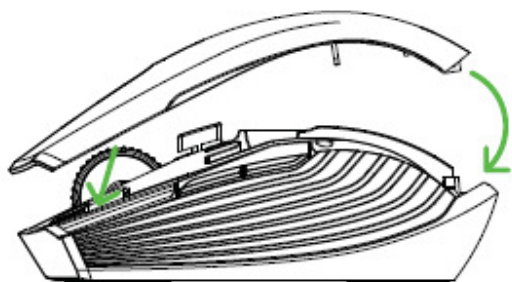
2. Insert the two included AA batteries into the Razer Atheris following the directions indicated on the battery compartment.

**Caution: The two included AA batteries are non-rechargeable. Dispose of these batteries in accordance with your local environmental laws. For your safety, use only alkaline batteries and do not mix old batteries with new ones.**



3. Reattach the top cover onto the Razer Atheris and make sure that it is tightly secured.

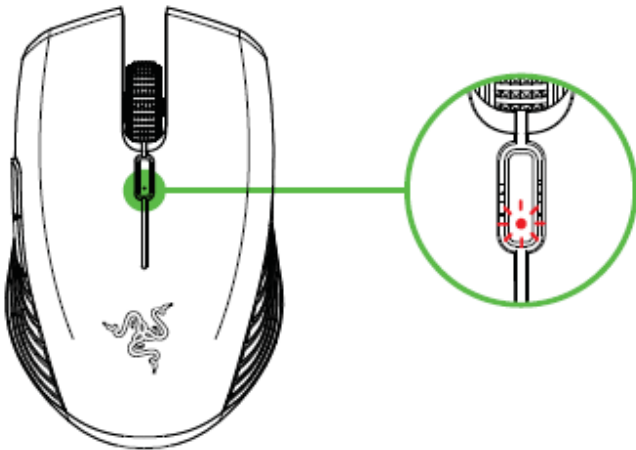
**i** *It is highly recommended to remove the batteries from the mouse if you are not intending to use it for a prolonged period of time.*



## LOW BATTERY NOTIFICATION

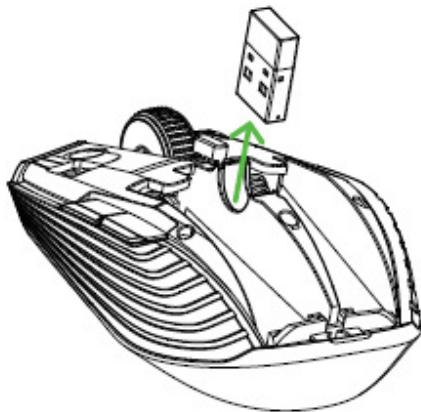
The Razer Atheris' LED indicator will blink red twice in repeated intervals to indicate that the battery level of the inserted batteries are less than 5%\*. This lighting sequence will repeat until the batteries are fully drained. Once you receive this notification, it is time to replace the batteries.

**i** *The indicator percentage can be customized through Razer Synapse Pro.*

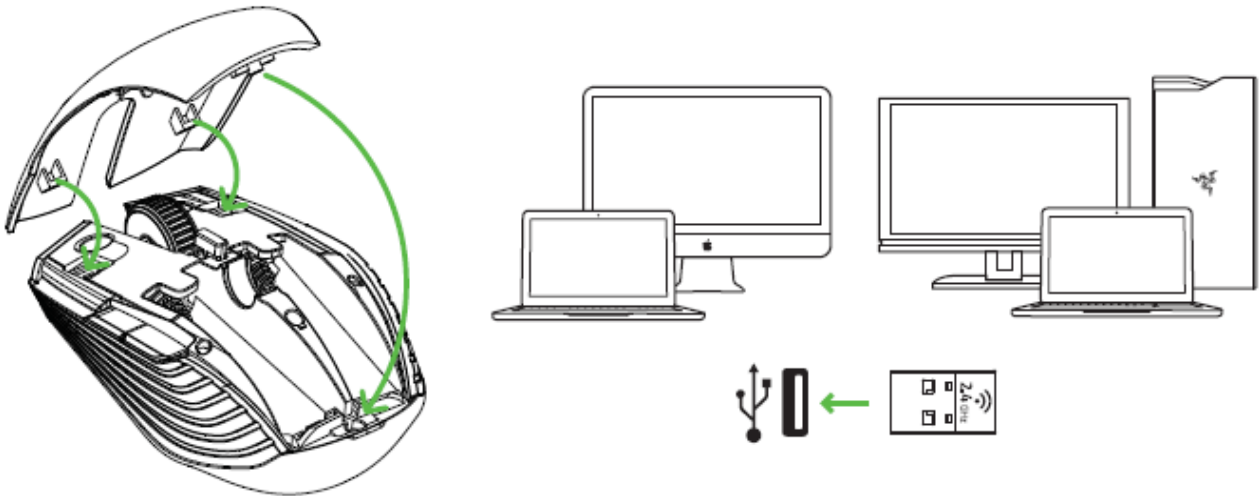


## CONNECTING THE RAZER ATHERIS VIA 2.4 GHZ MODE

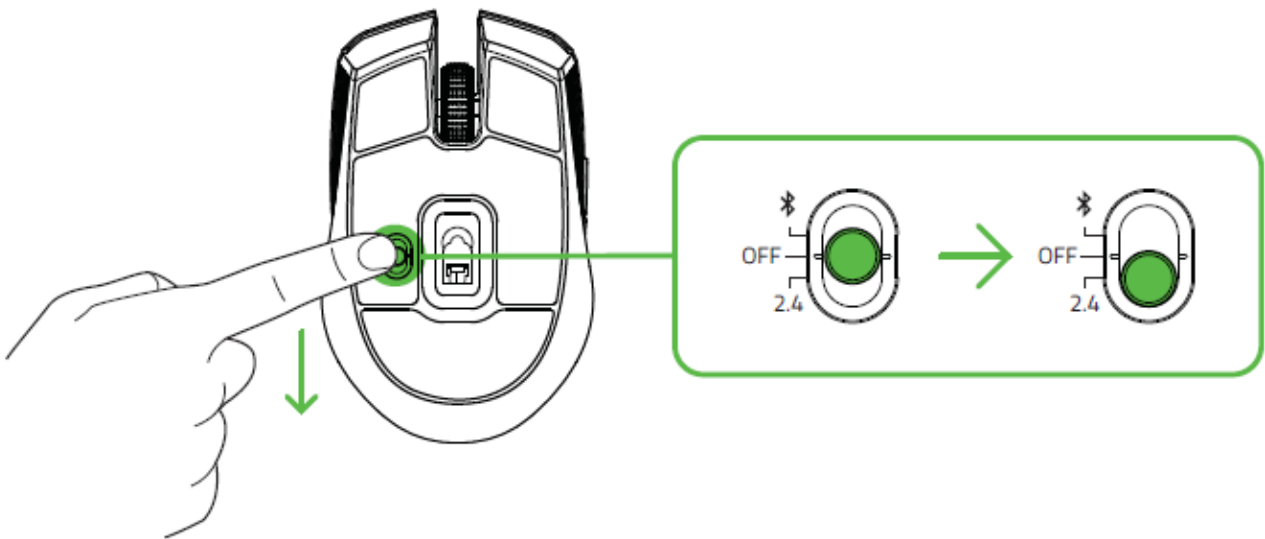
1. Remove the top cover of the Razer Atheris and take the wireless USB dongle.



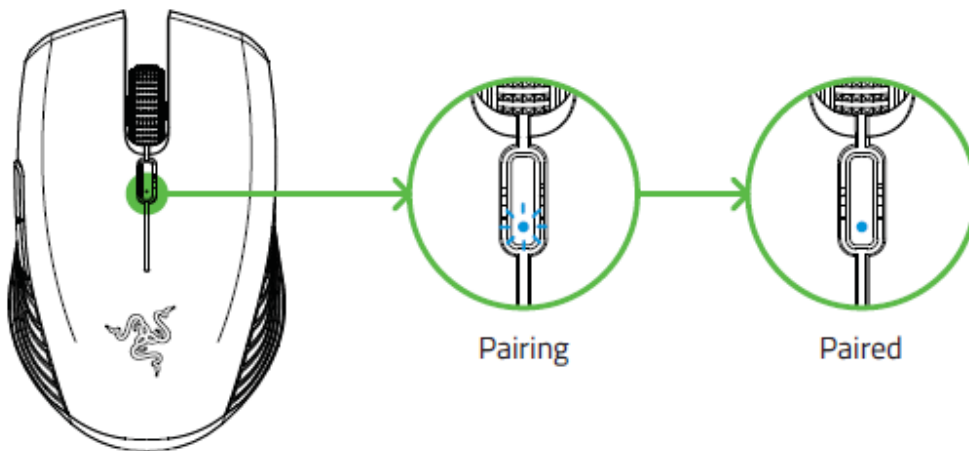
2. Close the top cover and connect the wireless USB dongle to the USB port of your computer.



3. Push the slider switch of the Razer Atheris to 2.4 GHz mode. The LED indicator will start blinking rapidly.



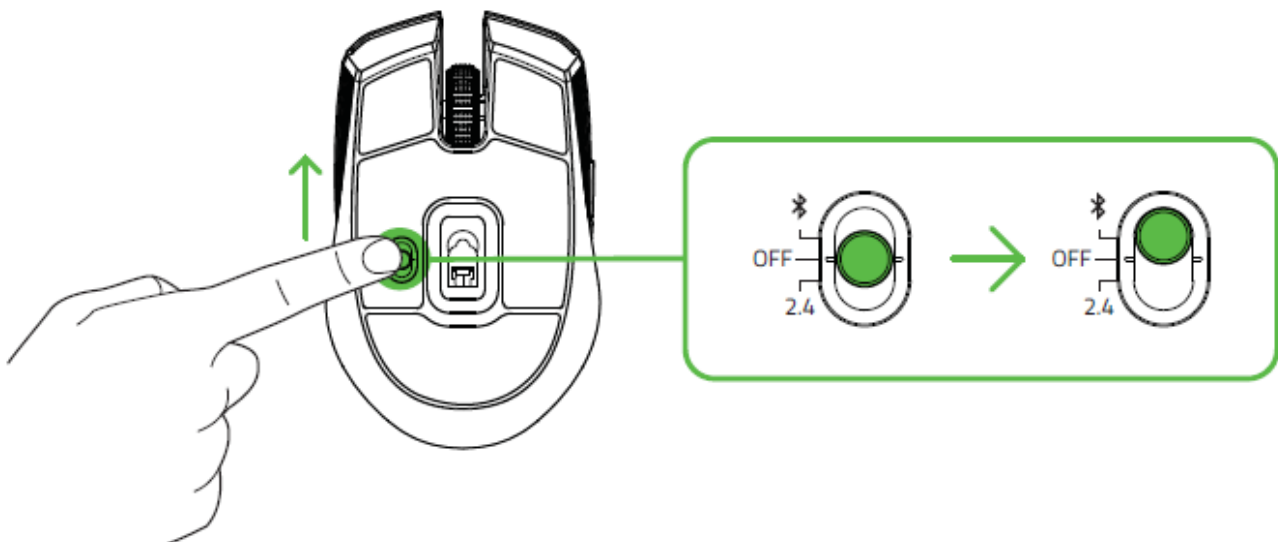
4. Wait until the mouse automatically pairs with the wireless USB dongle. When paired, the LED indicator will change to static blue for 5 seconds before turning off.



**i** Keep the pairing devices within close proximity of each other for a faster and more stable connection. Congratulations, your Razer Atheris is now ready to use in 2.4 GHz mode.

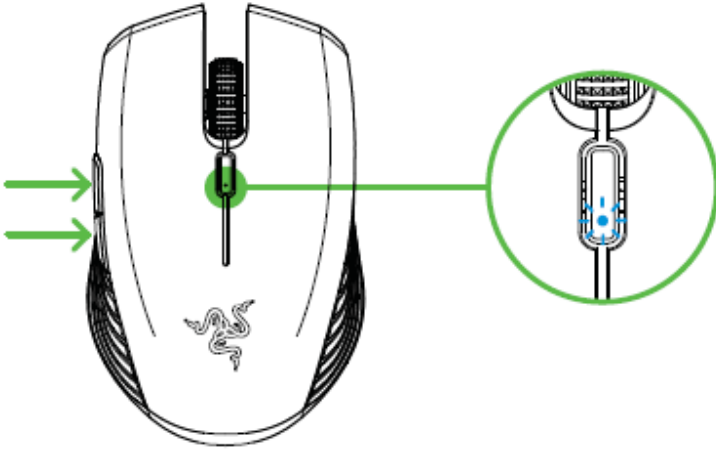
## CONNECTING THE RAZER ATHERIS VIA BLUETOOTH MODE

1. Push the slider switch of the Razer Atheris to Bluetooth mode (📶).

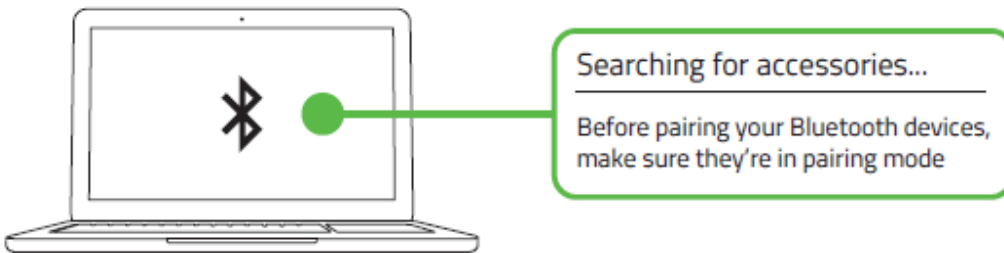




2. Press and hold the two side buttons and the DPI cycle button simultaneously for three seconds to activate pairing mode. The LED indicator will blink twice in repeated intervals to show that the device is in pairing mode.



3. Activate Bluetooth on your device and search for new Bluetooth devices.



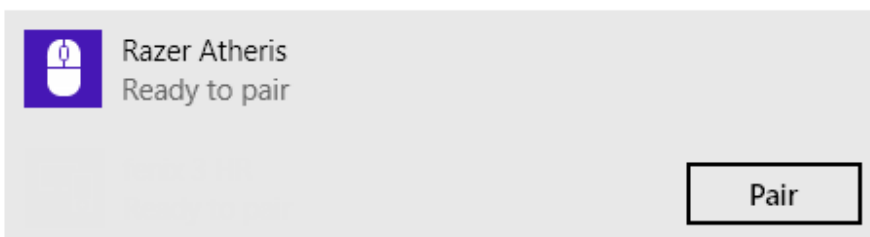
4. Select "Razer Atheris" from the list of devices found.

## Manage Bluetooth devices

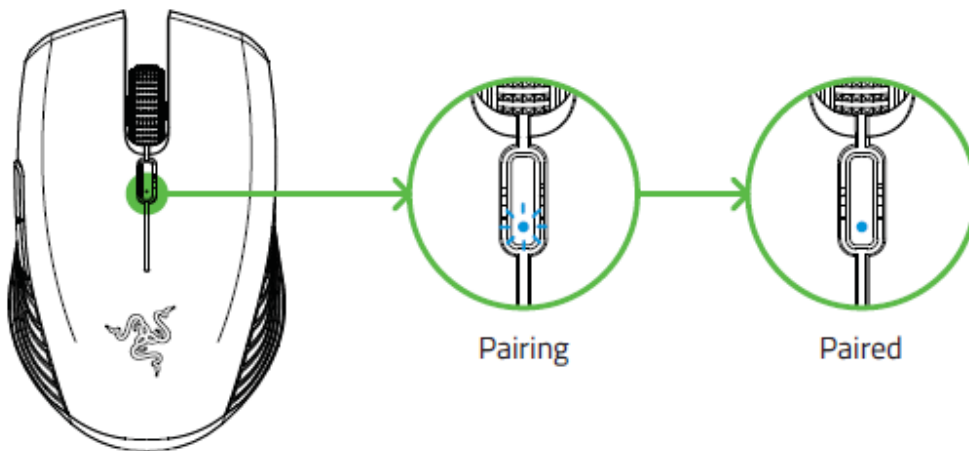
Bluetooth

On 

Your PC is searching for and can be discovered by Bluetooth devices.



5. Wait until the mouse automatically pairs with the wireless USB dongle. When paired, the LED indicator will change to static blue for 5 seconds before turning off.



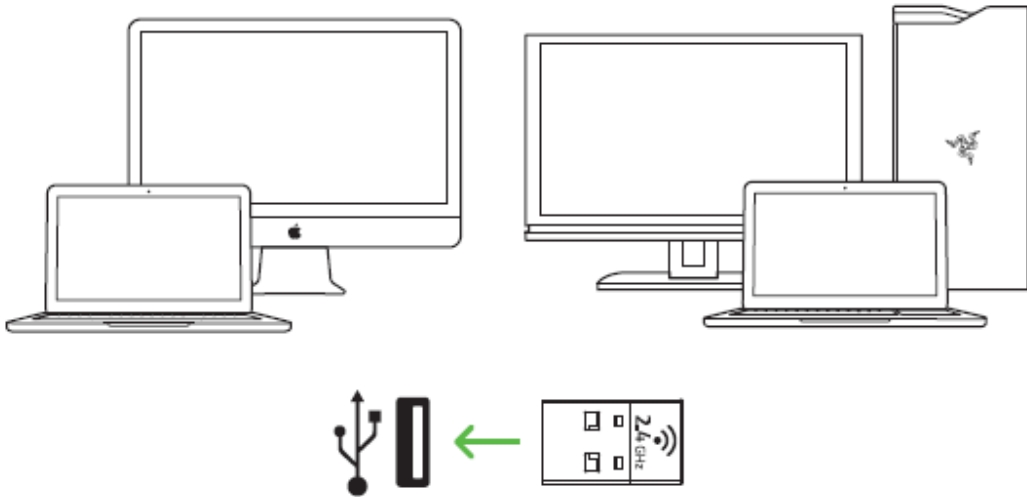
**i** *Keep the pairing devices within close proximity of each other for faster and more stable connection.*

Once your device has been paired, your Razer Atheris will automatically reconnect to the device whenever it is in Bluetooth mode and the device is within range.

Congratulations, your Razer Atheris is now ready to use in Bluetooth mode.

---

## INSTALLING RAZER SYNAPSE PRO / RAZER SYNAPSE FOR YOUR RAZER ATHERIS



Step 1: Make sure your Razer Atheris is connected to your PC or Mac.

Step 2: Install Razer Synapse Pro when prompted or download either the Razer Synapse Pro or Razer Synapse installer from [razerzone.com/software](https://www.razerzone.com/software).

Step 3: Register for a Razer ID or log in with an existing account.

---

## SAFETY AND MAINTENANCE

### SAFETY GUIDELINES

In order to achieve maximum safety while using your Razer Atheris, we suggest that you adopt the following guidelines:

Avoid looking directly at the tracking beam of your mouse or pointing the beam in anyone else's eye. Note that the tracking beam is NOT visible to the naked human eye and is set on an Always-On mode.

Should you have trouble operating the device properly and troubleshooting does not work, unplug the device and contact the Razer hotline or go to [razersupport.com](https://www.razer.com/support) for support. Do not attempt to service or fix the device yourself at any time.

Do not take apart the device (doing so will void your warranty) and do not attempt to operate it under abnormal current loads.

Keep the device away from liquid, humidity or moisture. Operate the device only within the specific temperature range of 0°C (32°F) to 40°C (104°F). Should the temperature exceed this range, unplug and switch off the device in order to let the temperature stabilize to an optimal level.

### COMFORT

Research has shown that long periods of repetitive motion, improper positioning of your computer peripherals, incorrect body position, and poor habits may be associated with physical discomfort and injury to nerves, tendons, and muscles. Below are some guidelines to avoid injury and ensure optimum comfort while using your Razer Atheris.

1. Position your keyboard and monitor directly in front of you with your mouse next to it. Place your elbows next to your side, not too far away and your mouse within easy reach.
2. Adjust the height of your chair and table so that the keyboard and mouse are at or below elbow height.
3. Keep your feet well supported, posture straight and your shoulders relaxed.
4. During gameplay, relax your wrist and keep it straight. If you do the same tasks with your hands repeatedly, try not to bend, extend or twist your hands for long periods.
5. Do not rest your wrists on hard surfaces for long periods. Use a wrist rest to support your wrist while gaming.

6. Customize the buttons on your mouse to suit your style of gaming in order to minimize repetitive or awkward motions while gaming.
7. Make sure that your mouse fits comfortably in your hands.
8. Do not sit in the same position all day. Get up, step away from your desk and do exercises to stretch your arms, shoulders, neck and legs.
9. If you should experience any physical discomfort while using your mouse, such as pain, numbness, or tingling in your hands, wrists, elbows, shoulders, neck or back, please consult a qualified medical doctor immediately.

## **MAINTENANCE AND USE**

The Razer Atheris requires minimum maintenance to keep it in optimum condition. Once a month we recommend you clean it using a soft cloth or cotton swab with a bit of warm water to prevent dirt buildup. Do not use soap or harsh cleaning agents.

To get the ultimate experience in movement and control, we highly recommend a premium mousing surface from Razer. Some surfaces will cause undue wear on the feet requiring constant care and eventual replacement.

Do note that the sensor of the Razer Atheris is “tuned” or optimized especially for the Razer mousing surfaces. This means that the sensor has been tested extensively to confirm that the Razer Atheris reads and tracks best on Razer mousing surfaces.

---

## LEGALESE

### **COPYRIGHT AND INTELLECTUAL PROPERTY INFORMATION**

©2017 Razer Inc. All rights reserved. Razer, the triple-headed snake logo, Razer logo, "For Gamers. By Gamers.", and "Powered by Razer Chroma" logo are trademarks or registered trademarks of Razer Inc. and/or affiliated companies in the United States or other countries. All other trademarks are the property of their respective owners.

Windows and the Windows logo are trademarks of the Microsoft group of companies.

Mac OS, Mac and the Mac logo are trademarks or registered trademarks of Apple.

"The Bluetooth® word mark and logos are registered trademarks owned by the Bluetooth SIG, Inc. and any use of such marks by Razer is under license. Other trademarks and trade names are those of their respective owners.

Razer Inc. ("Razer") may have copyright, trademarks, trade secrets, patents, patent applications, or other intellectual property rights (whether registered or unregistered) concerning the product in this guide. Furnishing of this guide does not give you a license to any such copyright, trademark, patent or other intellectual property right. The Razer Atheris (the "Product") may differ from pictures whether on packaging or otherwise. Razer assumes no responsibility for such differences or for any errors that may appear. Information contained herein is subject to change without notice.

### **LIMITED PRODUCT WARRANTY**

For the latest and current terms of the Limited Product Warranty, please visit [razerzone.com/warranty](https://www.razerzone.com/warranty)

### **LIMITATION OF LIABILITY**

Razer shall in no event be liable for any lost profits, loss of information or data, special, incidental, indirect, punitive or consequential or incidental damages, arising in any way out of distribution of, sale of, resale of, use of, or inability to use the Product. In no event shall Razer's liability exceed the retail purchase price of the Product.

## **COSTS OF PROCUREMENT**

For the avoidance of doubt, in no event will Razer be liable for any costs of procurement unless it has been advised of the possibility of such damages, and in no case shall Razer be liable for any costs of procurement liability exceeding the retail purchase price of the Product.

## **GENERAL**

These terms shall be governed by and construed under the laws of the jurisdiction in which the Product was purchased. If any term herein is held to be invalid or unenforceable, then such term (in so far as it is invalid or unenforceable) shall be given no effect and deemed to be excluded without invalidating any of the remaining terms. Razer reserves the right to amend any term at any time without notice.

### **FCC Statement**

This equipment has been tested and found to comply with the limits for a Class B digital device, pursuant to part 15 of the FCC Rules. These limits are designed to provide reasonable protection against harmful interference in a residential installation. This equipment generates, uses and can radiate radio frequency energy and, if not installed and used in accordance with the instructions, may cause harmful interference to radio communications. However, there is no guarantee that interference will not occur in a particular installation. If this equipment does cause harmful interference to radio or television reception, which can be determined by turning the equipment off and on, the user is encouraged to try to correct the interference by one or more of the following measures:

- Reorient or relocate the receiving antenna.
- Increase the separation between the equipment and receiver.
- Connect the equipment into an outlet on a circuit different from that to which the receiver is connected.
- Consult the dealer or an experienced radio/TV technician for help.

### **FCC Radiation Exposure Statement**

This device complies with FCC radiation exposure limits set forth for an uncontrolled environment.

This device complies with Part 15 of the FCC Rules. Operation is subject to the following two conditions:

- (1) this device may not cause harmful interference, and
- (2) this device must accept any interference received, including interference that may cause undesired operation.

### **Caution!**

Any changes or modifications not expressly approved by the party responsible for compliance could void the user's authority to operate the equipment.

## Canada Statement

This device complies with Industry Canada's licence-exempt RSSs. Operation is subject to the following two conditions:

- (1) This device may not cause interference; and
- (2) This device must accept any interference, including interference that may cause undesired operation of the device.

Le présent appareil est conforme aux CNR d'Industrie Canada applicables aux appareils radio exempts de licence. L'exploitation est autorisée aux deux conditions suivantes :

- (1) l'appareil ne doit pas produire de brouillage;
- (2) l'utilisateur de l'appareil doit accepter tout brouillage radioélectrique subi, même si le brouillage est susceptible d'en compromettre le fonctionnement.

The device meets the exemption from the routine evaluation limits in section 2.5 of RSS 102 and compliance with RSS-102 RF exposure, users can obtain Canadian information on RF exposure and compliance.

Le dispositif rencontre l'exemption des limites courantes d'évaluation dans la section 2.5 de RSS 102 et la conformité à l'exposition de RSS-102 rf, utilisateurs peut obtenir l'information canadienne sur l'exposition et la conformité de rf.



## ENGLISH

### STATEMENT OF COMPLIANCE WITH EU DIRECTIVE

Hereby, Razer (Europe) GmbH, declares that this Razer Atheris Mobile Mouse (Model: RC30-021702) is in compliance with the essential requirements and other relevant provisions of Directive 2014/53/EU.

Radio Frequency: Bluetooth  
Frequency Band: 2402MHz-2480MHz  
RF Power: 3.6dbm ± 3dbm  
Radio Frequency: 2.4Ghz SRD  
Frequency Band: 2402MHz-2480MHz (1 MHz)  
Frequency Band: 2403MHz-2479MHz (2MHz)  
RF Power: 4.8dbm ± 3dbm  
RF Power: 4.8dbm ± 3dbm  
Software/ Firmware: V1.0.03

The full Declaration of Conformity can be requested via the following :

Company: Razer (Europe) GmbH  
Address: Winterhuder Weg 82, D-22085 Hamburg, Germany  
E-mail: [compliance@razerzone.com](mailto:compliance@razerzone.com)