

The Razer 5.1 Channel Surround Sound Bar easily fits under any desktop monitor or living room console setup. Versatile enough to be repositioned constantly in any situation, this sound bar features cutting-edge Dolby® technology, superior sound drivers, and a dedicated subwoofer, projecting rich sounds that recreate epic in-game battle scenes or just streaming your favorite tunes from your smartphone.

CONFIDENTIAL

## TABLE OF CONTENTS

1. PACKAGE CONTENTS / HARDWARE REQUIREMENTS .....	2
2. REGISTRATION / TECHNICAL SUPPORT .....	3
3. TECHNICAL SPECIFICATIONS .....	4
4. DEVICE LAYOUT .....	5
5. USING YOUR RAZER LEVIATHAN .....	8
6. SAFETY AND MAINTENANCE .....	13
7. LEGALESE .....	14

---

## 1. PACKAGE CONTENTS / HARDWARE REQUIREMENTS

### ***PACKAGE CONTENTS***

- Razer Leviathan
- Power adapter with interchangeable plugs
- Subwoofer
- Optical cable
- 3.5mm analog audio cable
- Quick start guide
- Important product information guide

### ***HARDWARE REQUIREMENTS***

For Gaming / Movies

- PC or console devices with 3.5mm audio jack or an optical port

For Mobile

- Mobile devices with a 3.5mm audio jack or Bluetooth® / NFC connectivity

---

## 2. REGISTRATION / TECHNICAL SUPPORT

### **REGISTRATION**

Sign up now for a Razer Synapse account to get real-time information on your product's warranty status. To learn more about Razer Synapse and all its features, visit [www.razerzone.com/synapse](http://www.razerzone.com/synapse).

If you are already a Razer Synapse user, register your product by clicking on your email address at the Razer Synapse application and select *Warranty Status* from the dropdown list.

To register your product online, visit [www.razerzone.com/registration](http://www.razerzone.com/registration). Please note that you will not be able to view your warranty status if you register via the website.

### **TECHNICAL SUPPORT**

What you'll get:

- 1 year limited manufacturer's warranty.
- Free online technical support at [www.razersupport.com](http://www.razersupport.com).

---

### 3. TECHNICAL SPECIFICATIONS

#### Sound bar

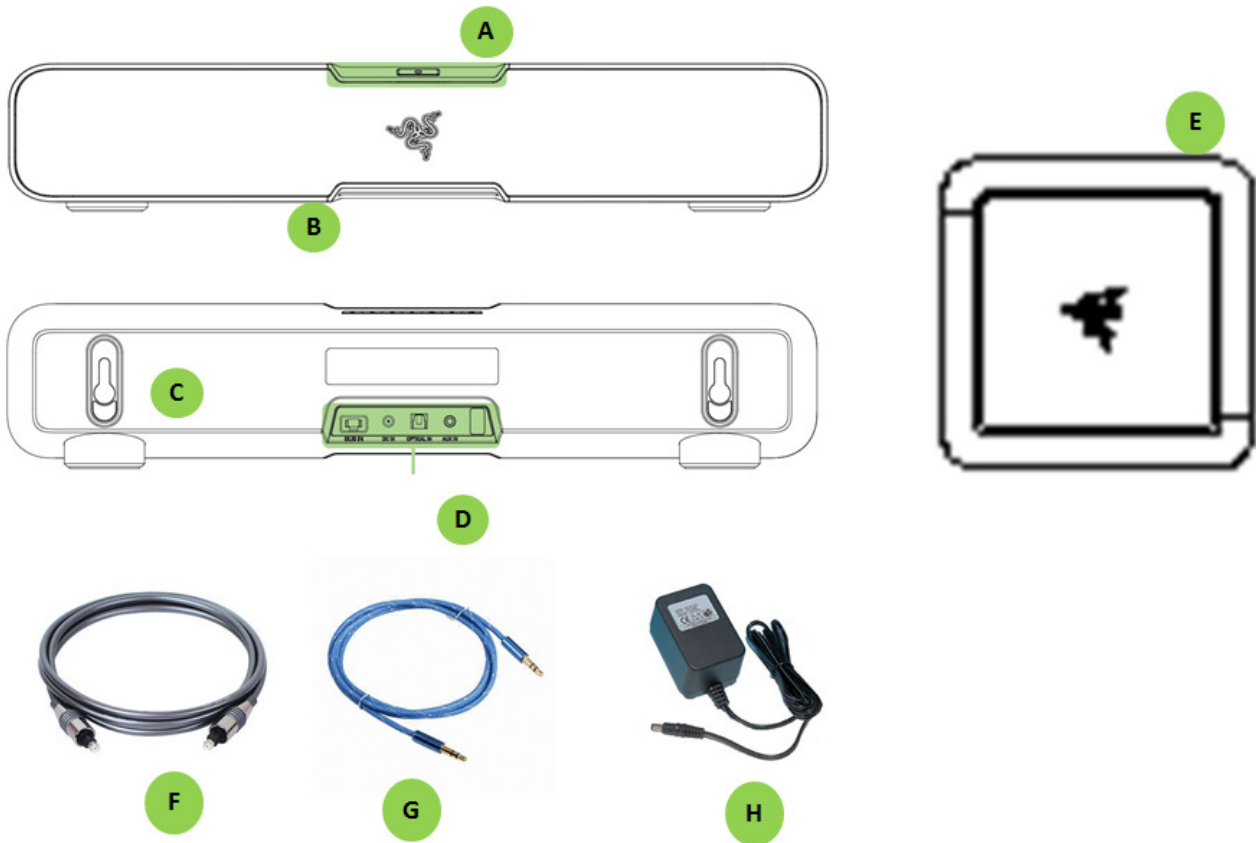
- Total power output: 30W (15W x 2RMS)
- Full range drivers: 2 x 2.5" / 63.5mm
- Tweeter drivers: 2 x 0.74" / 19 mm
- Impedance: 8Ω
- Frequency response rate: 180Hz – 20KHz
- Approximate weight: 4.4lbs / 2Kg

#### Subwoofer

- Type: Passive
- Total power output: 30W RMS
- Full range drivers: 5.25" / 133mm
- Impedance: 4Ω
- Frequency response rate: 20Hz – 180Hz
- Approximate weight: 6.6lbs / 3Kg

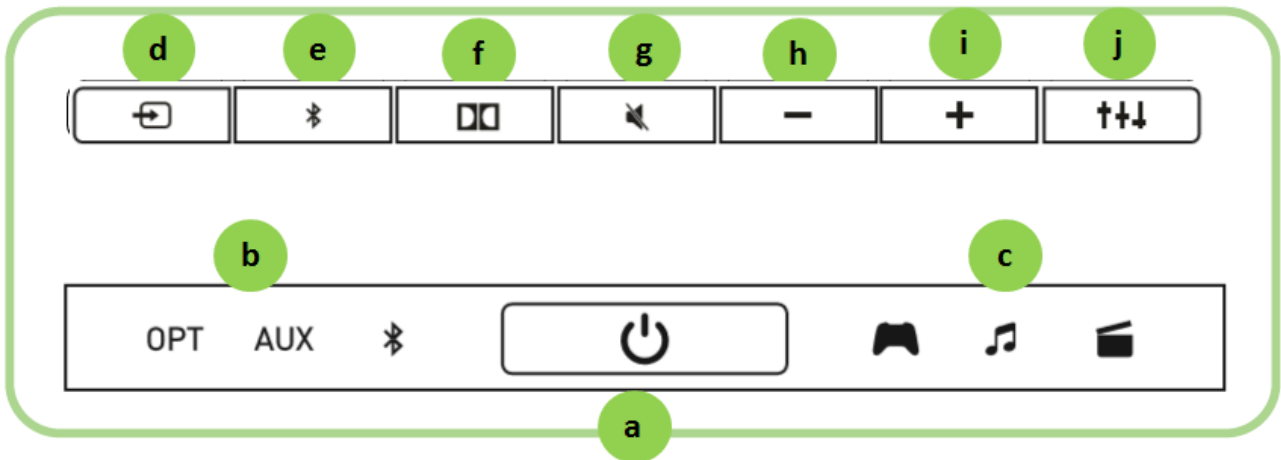
CONFIDENTIAL





## 4. DEVICE LAYOUT



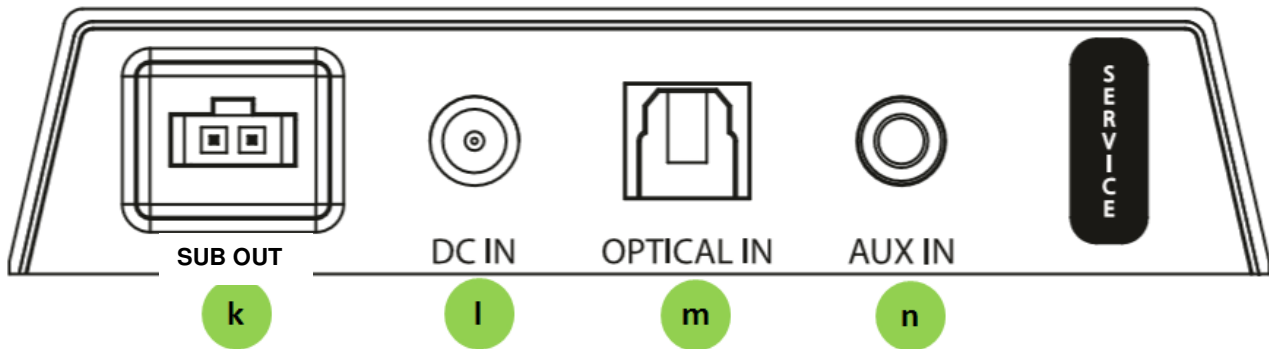
- A. Top panel (Buttons & LEDs)
- B. Ambient green LED
- C. Mounting keyholes
- D. Input panel
- E. Subwoofer with attached cable
- F. Optical cable
- G. 3.5mm to 3.5mm cable
- H. Power adapter

## Top Panel



- |    |                           |  |
|----|---------------------------|--|
| a. | Power button              | Turns the speaker on/off   |
| b. | Input indicator LED       | Indicates the current input audio source. <ul style="list-style-type: none"> <li>• OPT: Optical</li> <li>• AUX: Analog</li> <li>•  : Bluetooth</li> </ul>   |
| c. | Equalizer indicator LED   | Indicates the currently selected preset equalizer setting. <ul style="list-style-type: none"> <li>•  : Game</li> <li>•  : Music</li> <li>•  : Movies</li> </ul> |
| d. | Input selector            | Toggles between the 3 types of input   |
| e. | Bluetooth Pairing button  | Activates Bluetooth  |
| f. | Dolby® processing toggle  | Activates Dolby processing for optical audio inputs  |
| g. | Mute/unmute button        | Mutes / unmutes the speaker  |
| h. | Volume down               | Decreases the overall audio volume   |
| i. | Volume up                 | Increases the overall audio volume   |
| j. | Equalizer preset selector | Toggles between the 3 preset equalizer settings  |

## Input Panel



- k. Subwoofer output
- l. Main power input
- m. Optical input
- n. Analog 3.5mm input



## 5. USING YOUR RAZER LEVIATHAN

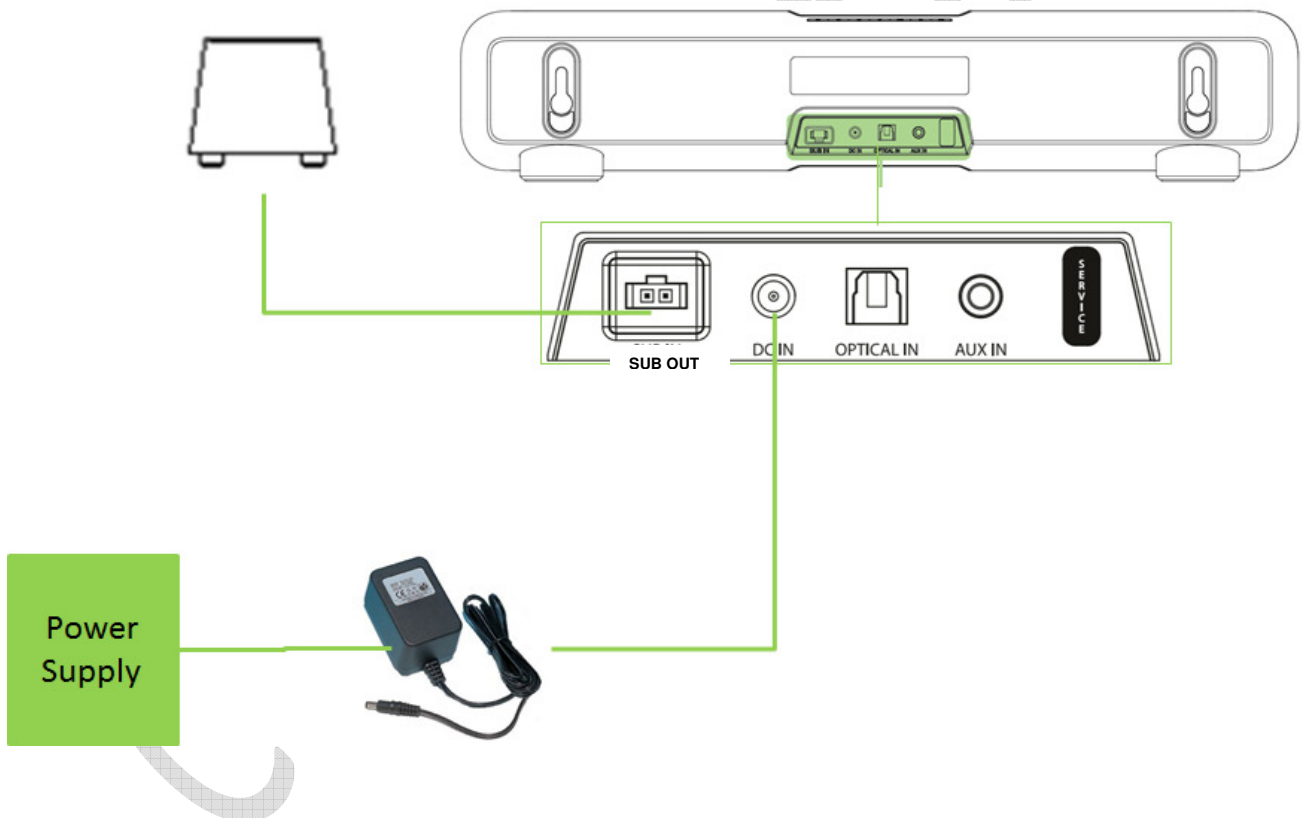
### SETTING UP AND POSITIONING YOUR SPEAKERS

[Diagram 1: Attaching the correct power adapter plug]

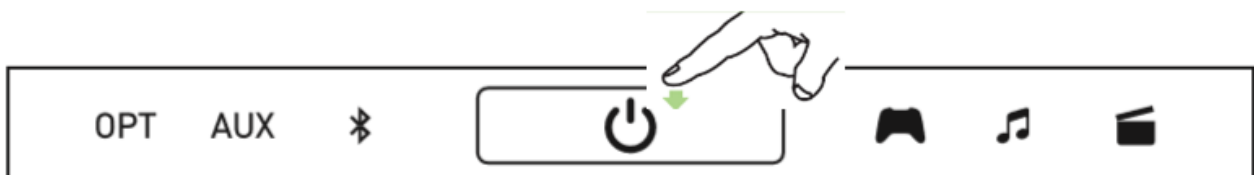
[Diagram 2: Positioning the speakers: Subwoofer on counter top / wall mounted + subwoofer on the floor]

For optimal performance, please ensure that the subwoofer is placed on the floor regardless of the positioning of your speaker.

[Diagram 3: Connection]



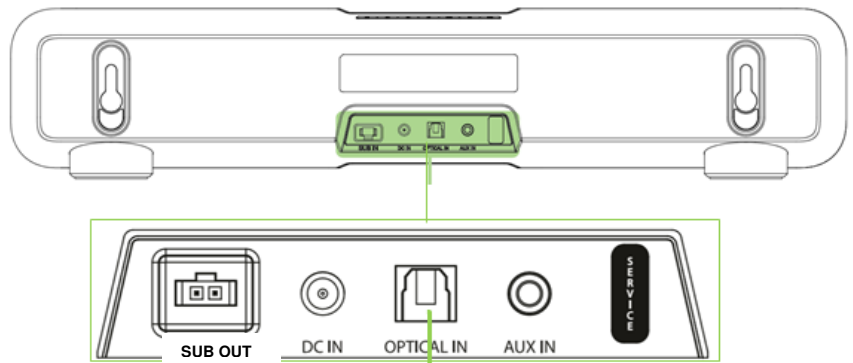
**POWERING ON / OFF**



## CONNECTING TO AN AUDIO SOURCE

Note: When connected to devices with inbuilt speaker systems, audio may continue to be played via the inbuilt speaker. In such cases, manually switch your device's audio output to the Razer Leviathan.

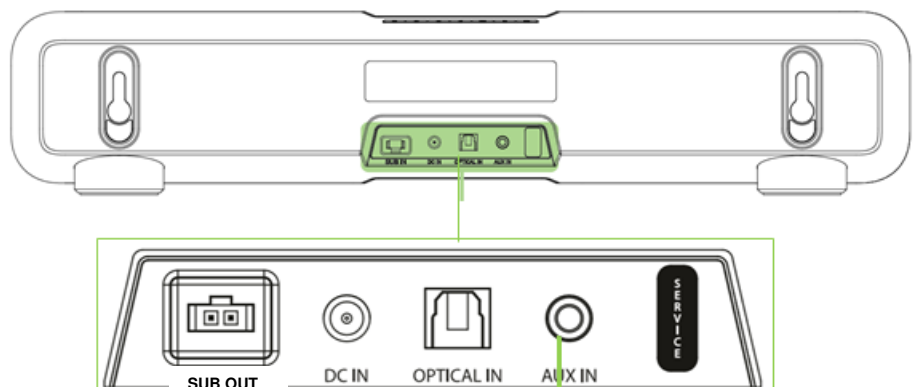
### Connecting via the optical cable



PC / PS4 / Xbox / Consoles / DVD Players

[Diagram: Toggle input to Optical]

### Connecting via the analog cable



Mobile phones / MP3 Players / Laptops /  
Consoles without Optical input

[Diagram: Toggle input to AUX]

### **Connecting via NFC**

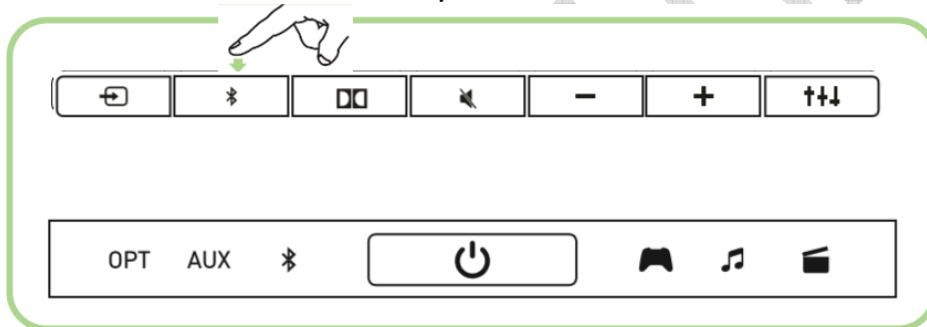
Simply activate NFC on your device and tap it on the speaker to pair. The input source will automatically switch to the paired device.

**[Diagram: NFC device tapped onto speaker]**

### **Connecting via Bluetooth®**

If you are using the speaker's Bluetooth input for the first time, or if you are attempting to connect a new device to the speaker via Bluetooth, you will need to activate pairing mode.

1. Press and hold the Bluetooth button for 3 seconds or more to enter pairing mode. The Bluetooth LED will start to blink slowly.




2. Enable Bluetooth on your device and search for new Bluetooth devices.
3. Select "Razer Leviathan" from the list of devices found.
4. Wait for pairing to complete. The Bluetooth indicator on your speaker top panel will change to a static lighting once successfully connected.

## Understanding the Bluetooth modes

The speaker's Bluetooth module operates in 3 modes - Pairing mode, Connecting mode, and Connectable mode. An audio feedback is played through the speaker whenever there is a status change in the Bluetooth connection.

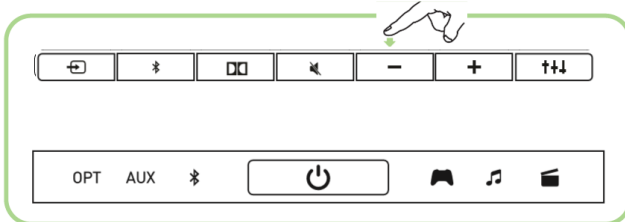
	<b>Pairing Mode</b>	<b>Connecting Mode</b>	<b>Connectable Mode</b>	<b>Connected Mode</b>
	Pairing with new devices	Connecting to the last paired device	Ready to connect to 1 of 4 last paired devices. Turn on Bluetooth on your device and select Razer Leviathan to connect.	When a device is connected to the speaker via Bluetooth
<b>Discoverable?</b>	Any Bluetooth enabled device	Only the last paired device	Only the last 4 paired devices	No
<b>How to activate?</b>	Press the Bluetooth button once	Press and hold the Bluetooth button for >3 seconds	Automatically activated when pairing mode or connecting mode times out	Automatically activated when a device is successfully paired
<b>Timeout</b>	90s	10s	Never	Never
<b>Automatically Changes to?</b>	Connectable mode after timeout	Connectable mode after timeout	-	Connecting mode when the paired device is disconnected (out of range)
<b>LED indication</b>	Breathes once per second	Breathes twice per second	Repeatedly breathes twice followed by a pause	Solid
<b>Audio feedback</b>	Yes	Yes	Yes	Yes

### **CHANGING THE INPUT SOURCE**

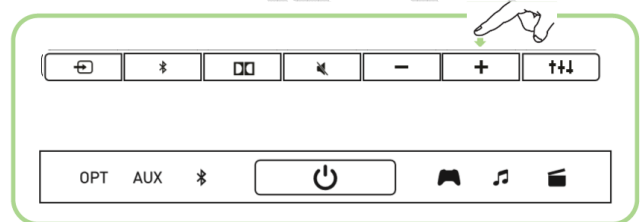
The Razer Leviathan supports 3 types of audio input - Optical, Analog and Bluetooth. The speaker starts up in analog input when powered on. You can manually change the input source by pressing the  button. The LED indicator displays the currently selected input source.

### **ADJUSTING THE VOLUME**


#### **Volume Down**






#### **Volume Up**



### **SELECTING AN EQUALIZER PRESET**

3 equalizer preset settings are programmed into the speaker, gaming, music and movies. Press the  button to select your desired preset. The LED indicator shows which equalizer preset is currently in use.

### **ADJUSTING THE SUBWOOFER LEVEL**

Press and hold the  button, then press the  or  buttons to increase or decrease the output level of the subwoofer respectively.

[Diagram showing button presses]

### **TURNING THE BOTTOM LED ON/OFF**

Press and hold the  button, then press the  once to switch the LED on/off.

[Diagram showing button presses]

### **ADJUSTING THE SPEAKER ANGLE**

[2 Diagrams: 1 showing how to remove and reattach feet; 2 showing the different angles]

Adjust your speaker angle accordingly to ensure that sound is delivered to you with the least amount of obstruction.

---

## 6. SAFETY AND MAINTENANCE

### **SAFETY GUIDELINES**

In order to achieve maximum safety while using your Razer Leviathan, we suggest that you adopt the following guidelines:

1. Should you have trouble operating the device properly and troubleshooting does not work, unplug the device and contact the Razer hotline or go to [www.razersupport.com](http://www.razersupport.com) for support. Do not attempt to service or fix the device yourself at any time.
2. Do not take the device apart (doing so will void your warranty) and do not attempt to service it yourself or operate it under abnormal current loads.
3. Keep your device away from liquid, humidity or moisture. Operate your device only within the specified temperature range of 0°C (32°F) to 40°C (104°F). Should you operate it in a temperature that is beyond this range, unplug and switch off the device in order to let the temperature stabilize within the optimal temperature range.
4. Listening to excessively loud volumes over extended periods of time can damage your hearing. Furthermore, legislation of certain countries permits a maximum sound level of 86dB to affect your hearing for 8 hours a day. We therefore recommend that you reduce the volume to a comfortable level when listening for prolonged periods of time. Please, take good care of your hearing.

### **MAINTENANCE AND USE**

The Razer Leviathan requires minimum maintenance to keep it in optimum condition. Once a month we recommend you unplug the device and clean it using a soft cloth or cotton swab with a bit of warm water to prevent dirt buildup. Do not use soap or harsh cleaning agents.

---

## 7. LEGALESE

### ***COPYRIGHT AND INTELLECTUAL PROPERTY INFORMATION***

©2014 Razer Inc. Patent Pending. All Rights Reserved. Razer™, the Razer Triple-Headed Snake logo, the Razer distressed word logo and other trademarks contained herein are trademarks or registered trademarks of Razer Inc. and/or its affiliated or associated companies, registered in the United States and/or other countries.

Razer Inc. (“Razer”) may have copyright, trademarks, trade secrets, patents, patent applications, or other intellectual property rights (whether registered or unregistered) concerning the product in this guide. Furnishing of this guide does not give you a license to any such copyright, trademark, patent or other intellectual property right. The Razer Leviathan (the “Product”) may differ from pictures whether on packaging or otherwise. Razer assumes no responsibility for such differences or for any errors that may appear. Information contained herein is subject to change without notice.

Manufactured under license from Dolby Laboratories.

Dolby, Pro Logic, and the double-D symbol are trademarks of Dolby Laboratories.

The aptX® mark and the aptX logo are trade marks of CSR plc or one of its group companies and may be registered in one or more jurisdictions.



### ***LIMITED PRODUCT WARRANTY***

For the latest and current terms of the Limited Product Warranty, please visit [www.razerzone.com/warranty](http://www.razerzone.com/warranty).

***LIMITATION OF LIABILITY***

Razer shall in no event be liable for any lost profits, loss of information or data, special, incidental, indirect, punitive or consequential or incidental damages, arising in any way out of distribution of, sale of, resale of, use of, or inability to use the Product. In no event shall Razer's liability exceed the retail purchase price of the Product.

***COSTS OF PROCUREMENT***

For the avoidance of doubt, in no event will Razer be liable for any costs of procurement unless it has been advised of the possibility of such damages, and in no case shall Razer be liable for any costs of procurement liability exceeding the retail purchase price of the Product.

***GENERAL***

These terms shall be governed by and construed under the laws of the jurisdiction in which the Product was purchased. If any term herein is held to be invalid or unenforceable, then such term (in so far as it is invalid or unenforceable) shall be given no effect and deemed to be excluded without invalidating any of the remaining terms. Razer reserves the right to amend any term at any time without notice.



## **FCC Statement**

This equipment has been tested and found to comply with the limits for a Class B digital device, pursuant to part 15 of the FCC Rules. These limits are designed to provide reasonable protection against harmful interference in a residential installation. This equipment generates uses and can radiate radio frequency energy and, if not installed and used in accordance with the instructions, may cause harmful interference to radio communications. However, there is no guarantee that interference will not occur in a particular installation. If this equipment does cause harmful interference to radio or television reception, which can be determined by turning the equipment off and on, the user is encouraged to try to correct the interference by one or more of the following measures:

- Reorient or relocate the receiving antenna.
- Increase the separation between the equipment and receiver.
- Connect the equipment into an outlet on a circuit different from that to which the receiver is connected.
- Consult the dealer or an experienced radio/TV technician for help.

## **FCC Statement**

This device complies with FCC radiation exposure limits set forth for an uncontrolled environment.

This device complies with Part 15 of the FCC Rules. Operation is subject to the following two conditions: (1) this device may not cause harmful interference, and (2) this device must accept any interference received, including interference that may cause undesired operation.

## **Caution!**

Any changes or modifications not expressly approved by the party responsible for compliance could void the user's authority to operate the equipment.

## Canada Statement

This device complies with Industry Canada licence-exempt RSS standard(s). Operation is subject to the following two conditions: (1) this device may not cause interference, and (2) this device must accept any interference, including interference that may cause undesired operation of the device.

Le présent appareil est conforme aux CNR d'Industrie Canada applicables aux appareils radio exempts de licence. L'exploitation est autorisée aux deux conditions suivantes : (1) l'appareil ne doit pas produire de brouillage, et (2) l'utilisateur de l'appareil doit accepter tout brouillage radioélectrique subi, même si le brouillage est susceptible d'en compromettre le fonctionnement.

The device meets the exemption from the routine evaluation limits in section 2.5 of RSS 102 and compliance with RSS-102 RF exposure, users can obtain Canadian information on RF exposure and compliance.

Le dispositif rencontre l'exemption des limites courantes d'évaluation dans la section 2.5 de RSS 102 et la conformité à l'exposition de RSS-102 rf, utilisateurs peut obtenir l'information canadienne sur l'exposition et la conformité de rf.

## Product Description

Model: RC30-012601(GAMING & MUSIC SOUND BAR )

Model: RC30-012602(SUBWOOFER)

Model: DYS650-180280W-K(Power adapter with interchangeable plugs)

INPUT: 100-240V~50/60Hz

OUTPUT: 18.0V 2.8A

Manufactured by: Dongguan Dongsong Electronic Co., Ltd