

8th July 2020



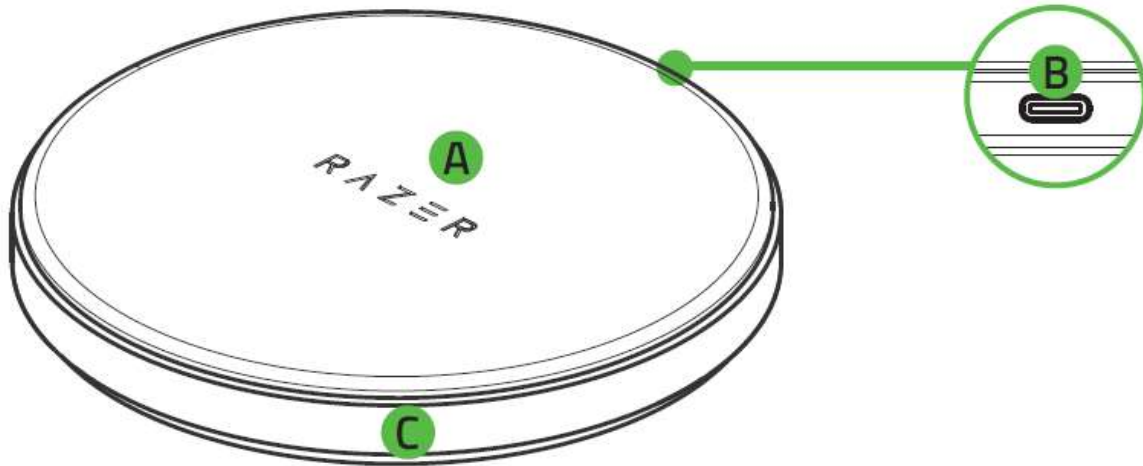
USER MANUAL FOR WIRELESS CHARGER
[MODEL: RC21-0160]

IMPORTANT PRODUCT INFORMATION GUIDE

WHAT'S INSIDE / WHAT'S NEEDED

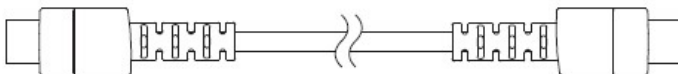
WHAT'S INSIDE

- Wireless Charger [Model: RC21-0160]



- a. Wireless charging surface
- b. Type C port
- c. Underglow lighting

- Type C cable



- Important Product Information Guide

WHAT'S NEEDED

PRODUCT REQUIREMENTS

- Qi™ enabled or with external Qi™ receiver / case smartphones
- PC with a free Type C port*

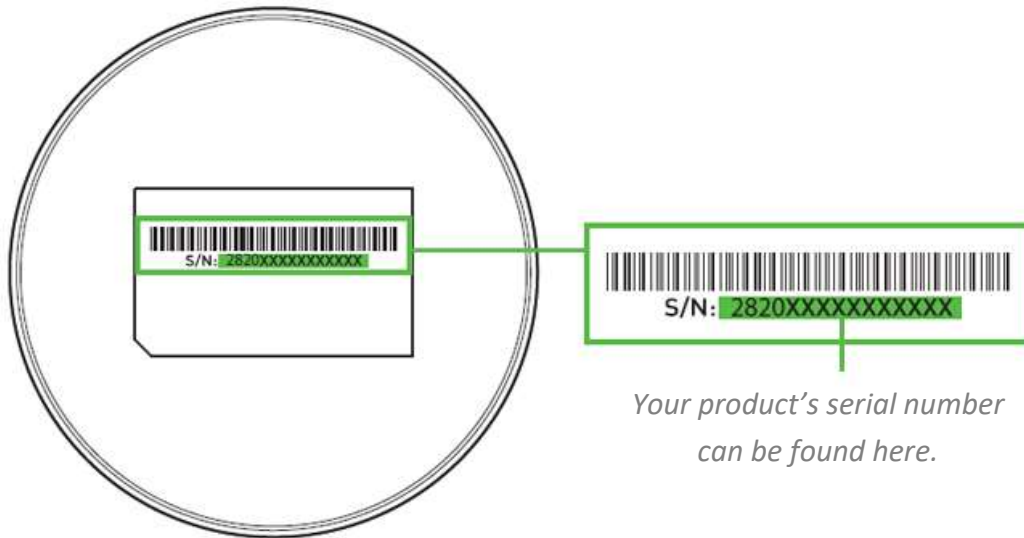
RAZER SYNAPSE REQUIREMENTS

- Windows® 7 64-bit (or higher)
- Internet connection for software installation

**Standard charging (5W) only. The charging pad is also compatible with Type C Quick Charge (2.0 or 3.0 compliant) or Power Delivery (2.0 or 3.0 compliant) power adapters for fast charging (10W); and 5V 2A power adapters for standard charging (5W).*

LET'S GET YOU COVERED

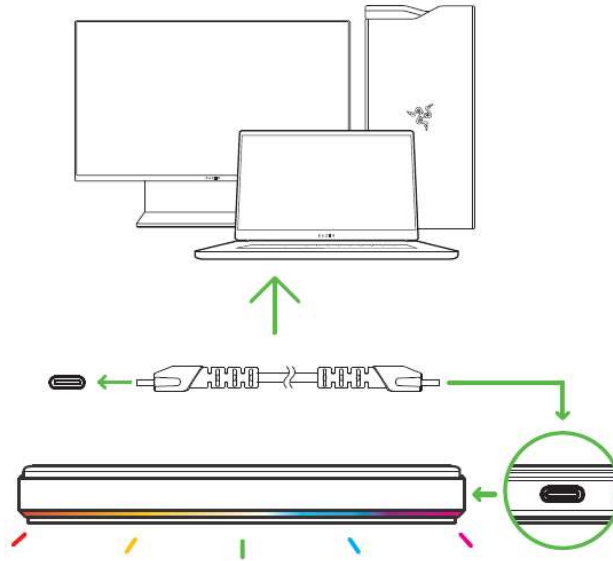
You've got a great device in your hands, complete with a 1-year limited warranty coverage. Now maximize its potential and score exclusive Razer benefits by registering at razerid.razer.com



Got a question? Ask the Razer Support Team at support.razer.com

SETTING UP THE CHARGING PAD

- Connect the charging pad to the Type C port of your PC using the Type C cable. The underglow lighting will briefly display a rapid wave of colors to show that you can now begin charging your smartphone.



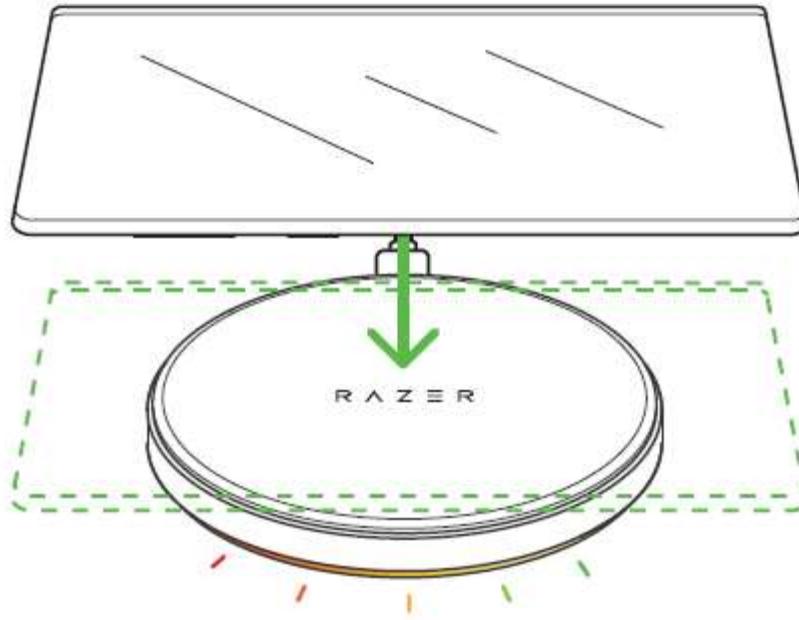
The charging speed is dependent on the connection of the charging pad, as shown here:

	Connection	Charging speed**
PC / Laptop	Type C port	Standard charging (5W)
	Type A port*	
Power adapter*	5V 2A power adapters	Fast charging (10W)
	Up to 12W power adapters**	

*Power adapter and Type C to Type A cable (for Type A connection), not included.

**Compatible with Quick Charge / Power Delivery (2.0 or 3.0 compliant) power adapters. The charging pad's ambient temperature may directly affect its charging speed. Depending on the OS of your smartphone, the charging pad may either shift to standard charging (5W) or simply stop charging your smartphone if its operating temperature exceeds its recommended range (see Safety and Maintenance).

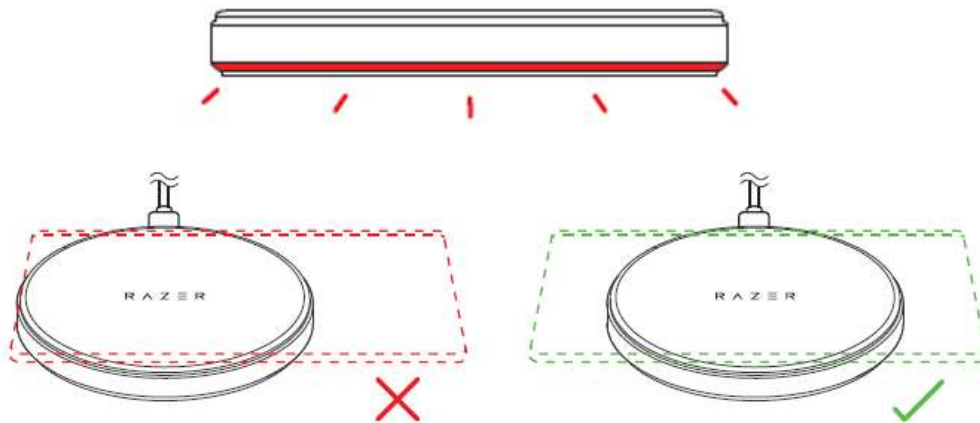
- Place your smartphone on the center of the charging pad. The underglow lighting will display a slow wave of colors to indicate that it is now charging your smartphone.



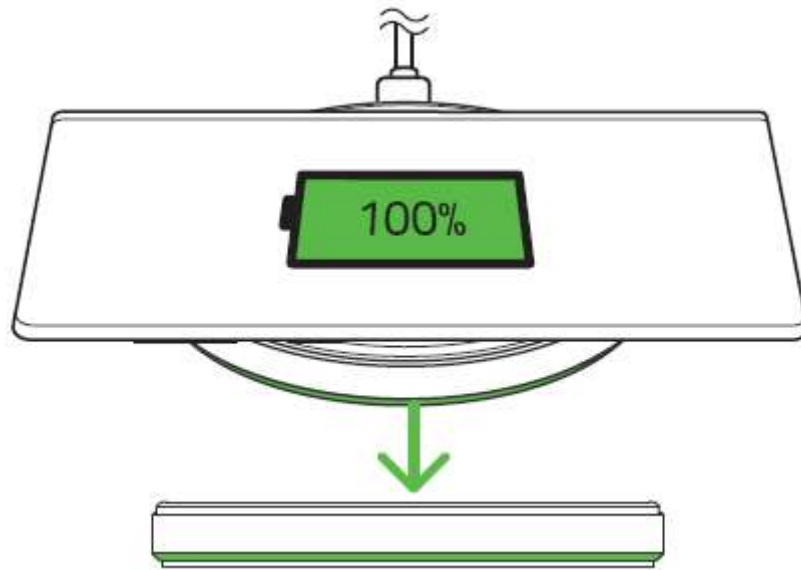
Z

i When fast charging (10W), the underglow lighting will display a rapid wave of colors.

If the underglow lighting continuously flashes in red (a charging error), check if your smartphone is compatible and/or properly placed at the center of the charging surface.



- Wait for your smartphone to fully charge. The charging pad will gently pulse in green to indicate that it has finished charging.



- Use the Razer Synapse* app to customize the brightness and lighting effects of your charging pad when charging and/or idle, and even synchronize its lighting with other Razer Chroma-enabled devices for a unified look across your devices.

**Install Razer Synapse when prompted or download the installer from [razer.com/synapse](https://www.razer.com/synapse).*

Find out more about your full-spectrum charging pad at support.razer.com

SAFETY AND MAINTENANCE

SAFETY GUIDELINES

In order to achieve maximum safety while using your RC21-0160, we suggest that you adopt the following guidelines:

- Should you have trouble using the device properly and troubleshooting does not work, unplug the device and contact the Razer hotline or go to support.razer.com. Don't attempt to service or fix the device yourself at any time.
- Don't take apart the device and don't attempt to operate it under abnormal current loads. Doing so will void your warranty.
- When using a power adapter (not included) with the device, make sure that its Type C cable is fully inserted into the power adapter before plugging it into a power outlet.
- Place the device on a stable surface that allows adequate air ventilation. Don't place the device on any unstable surface as the device may fall which may cause injury, damage to property, and even the product itself.
- Don't use or place the device near water, moisture, or other wet surfaces.
- Don't use or place the device near any heat, naked flame, or other hot surfaces such as radiators, stoves, fireplaces, and candles.
- Use caution when using the device to avoid electrical shock or damage, such as unplugging the device during thunderstorms, ensuring that your hands are dry before using (and handling) the device, keeping it away from any source of liquid and/or heat source, and using all other reasonable precautions needed under the circumstances.
- Protect the Type C cable from being walked on or pinched, particularly at plugs, convenience receptacles, or the point where they exit from the device.
- Don't overload wall electricity outlets, extension cords and plugs. This may result in fire or electrical shock.
- The device should be used for compatible mobile devices only. Please check the packaging to know if it is compatible with your mobile device. Razer shall not be responsible for any damages incurred to any device when using the charging pad.
- Don't use the device under pillows, blankets or near flammable surfaces as the device will generate heat while charging.
- The device should only be operated using the type of power source indicated on the device. If you are unsure of the power source, please consult the local power company or a qualified technician.
- Refer all servicing to qualified service personnel. This is required when the device has been damaged in any way, such as if its Type C cable is damaged, liquid has been spilled or objects have fallen on the device; the device has been exposed to rain or moisture, does not operate normally, or has been dropped.
- Keep the device away from liquid, humidity or moisture. Operate the device only within the specific temperature range of 0°C (32°F) to 40°C (104°F). Should the temperature

exceed this range, unplug and/or switch off the device in order to let the temperature stabilize to an optimal level.

MAINTENANCE AND USE

The RC21-0160 requires minimum maintenance to keep it in optimum condition. Once a month, we recommend you unplug the charging pad and gently clean it using a soft cloth or cotton swab to prevent dirt buildup. Don't use soap or harsh cleaning agents.

LEGALESE

COPYRIGHT AND INTELLECTUAL PROPERTY INFORMATION

©2020 Razer Inc. All rights reserved. Razer, the triple-headed snake logo, Razer logo, "For Gamers. By Gamers.", and "Razer Chroma" logo are trademarks or registered trademarks of Razer Inc. and/or affiliated companies in the United States or other countries.

The 'Qi' symbol is a trademark of the Wireless Power Consortium.

Windows and the Windows logo are trademarks of the Microsoft group of companies.

All other trademarks and trade names are the property of their respective owners and other company and product names mentioned herein may be trademarks of their respective companies.

Razer Inc. (“Razer”) may have copyright, trademarks, trade secrets, patents, patent applications, or other intellectual property rights (whether registered or unregistered) concerning the product in this guide. Furnishing of this guide does not give you a license to any such copyright, trademark, patent or other intellectual property right. The RC21-0160 (the “Product”) may differ from pictures whether on packaging or otherwise. Razer assumes no responsibility for such differences or for any errors that may appear. Information contained herein is subject to change without notice.

LIMITED PRODUCT WARRANTY

For the latest and current terms of the Limited Product Warranty, please visit [razer.com/warranty](https://www.razer.com/warranty).

LIMITATION OF LIABILITY

Razer shall in no event be liable for any lost profits, loss of information or data, special, incidental, indirect, punitive or consequential or incidental damages, arising in any way out of distribution of, sale of, resale of, use of, or inability to use the Product. In no event shall Razer’s liability exceed the retail purchase price of the Product.

GENERAL

These terms shall be governed by and construed under the laws of the jurisdiction in which the Product was purchased. If any term herein is held to be invalid or unenforceable, then such term (in so far as it is invalid or unenforceable) shall be given no effect and deemed to be excluded without invalidating any of the remaining terms. Razer reserves the right to amend any term at any time without notice.



STATEMENT OF COMPLIANCE WITH EU DIRECTIVE

Hereby, Razer (Europe) GmbH, declares that this Razer Charging Pad Chroma 10W Fast Wireless Charger is in compliance with the essential requirements and other relevant provisions of Directive 2014/53/EU.

Wireless Charger:

Operating Frequency: 110kHz ~148kHz

Max Output power: Max 10W

SW version: 1.0

The full Declaration of Conformity can be requested via the following: Company:

Company: Razer (Europe) GmbH

Address: Essener Bogen 23, 22419 Hamburg, Germany

E-mail: compliance@razer.com

Internet address: <https://www.razer.com>

FCC Statement

This equipment has been tested and found to comply with the limits for a Class B digital device, pursuant to part 15 of the FCC Rules. These limits are designed to provide reasonable protection against harmful interference in a residential installation. This equipment generates, uses and can radiate radio frequency energy and, if not installed and used in accordance with the instructions, may cause harmful interference to radio communications. However, there is no guarantee that interference will not occur in a particular installation. If this equipment does cause harmful interference to radio or television reception, which can be determined by turning the equipment off and on, the user is encouraged to try to correct the interference by one or more of the following measures:

- Reorient or relocate the receiving antenna.
- Increase the separation between the equipment and receiver.
- Connect the equipment into an outlet on a circuit different from that to which the receiver is connected.
- Consult the dealer or an experienced radio/TV technician for help.

This device complies with FCC radiation exposure limits set forth for an uncontrolled environment and it also complies with Part 15 of the FCC RF Rules. This equipment must be installed and operated in accordance with provided instructions and the antenna(s) used for this transmitter must be installed to provide a separation distance of at least 15 cm from all persons and must not be co-located or operating in conjunction with any other antenna or transmitter. End-users and installers must be provided with antenna installation instructions and consider removing the no-collocation statement.

This device complies with Part 15 of the FCC Rules. Operation is subject to the following two conditions: (1) this device may not cause harmful interference, and (2) this device must accept any interference received, including interference that may cause undesired operation:

- (1) this device may not cause harmful interference, and
- (2) this device must accept any interference received, including interference that may cause undesired operation.

Caution!

1. Any changes or modifications not expressly approved by the party responsible for compliance could void the user's authority to operate the equipment.
2. This device complies with Part 18 of the FCC Rules. This equipment generates uses and can radiate radio frequency energy and, if not installed and used in accordance with the instructions, may cause harmful interference to radio communications. If this equipment does cause harmful interference to radio or television reception, which can be determined by turning the equipment off and on, the user is encouraged to try to correct the interference by one or more of the following measures:
 - Increase the separation between the equipment and any other radio device. Connect the equipment into an outlet on a circuit different from that to which the receiver is connected.
 - The device prevent from using with damping environment. Use only in according with described instruction in order not to daman the device.

The device prevent from using with damping environment. Use only in according with described instruction in order not to damage the device.

CANADA STATEMENT

This device contains licence-exempt transmitter(s)/receiver(s) that comply with Innovation, Science and Economic Development Canada's licence-exempt RSS(s). Operation is subject to the following two conditions:

- (1) This device may not cause interference.
- (2) This device must accept any interference, including interference that may cause undesired operation of the device.

L'émetteur/récepteur exempt de licence contenu dans le présent appareil est conforme aux CNR d'Innovation, Sciences et Développement économique Canada applicables aux appareils radio exempts de licence. L'exploitation est autorisée aux deux conditions suivantes :

- 1) L'appareil ne doit pas produire de brouillage;
- 2) L'appareil doit accepter tout brouillage radioélectrique subi, même si le brouillage est susceptible d'en compromettre le fonctionnement.

The device meets the exemption from the routine evaluation limits in section 2.5 of RSS 102 and compliance with RSS-102 RF exposure, users can obtain Canadian information on RF exposure and compliance.

Le dispositif rencontre l'exemption des limites courantes d'évaluation dans la section 2.5 de RSS 102 et la conformité à l'exposition de RSS-102 rf, utilisateurs peut obtenir l'information canadienne sur l'exposition et la conformité de rf.

This transmitter must not be co-located or operating in conjunction with any other antenna or transmitter. This equipment should be installed and operated with a minimum distance of 10 centimeters between the radiator and your body.

Cet émetteur ne doit pas être Co-placé ou ne fonctionnant en même temps qu'aucune autre antenne ou émetteur. Cet équipement devrait être installé et actionné avec une distance minimum de 10 centimètres entre le radiateur et votre corps.