

## Product Specifications

### Operating Frequency

FCC Part 15 Section 255

Low transmit 58.1 GHz

High transmit 62.9 GHz

Occupied bandwidth 1.4 GHz

Frequency Division Duplex (FDD)

### Modulation/Coding

BFSK

Reed-Solomon (204,188) FEC

### Link Budget

162dB @  $10^{-12}$  BER

### External Antenna

Type directional cassegrain

Polarization linear (vert. or horiz.)

Gain 46 dBi

Fine-adjust (azimuth and elevation) 4.5" pole mount

### Ethernet Interface

1000Base-SX with LC connectors

Up to 1522-byte 802.1Q VLAN tagged frames

&lt; 50 microseconds latency

Multimode fiber cable lengths:

62.5/125  $\mu$ m 270 meters (max.)50/125  $\mu$ m 500 meters (max.)

### Power

Indoor supply input 110/220 Vac

Indoor supply output +24 Vdc

Power consumption 40 watts (max.)

Power cable length: 125 meters (max. w/14AWG)  
250 meters (max. w/12AWG)

### Mechanical

Size (mounted): 62w \* 62h \* 50d (cm)

Weight: Radio unit 4.5 kg

Antenna 7.5 kg

Pole mount 3.8 kg

### Environmental

Operating temperature -30 to +50 deg C

Altitude 4,500 meters (max.)

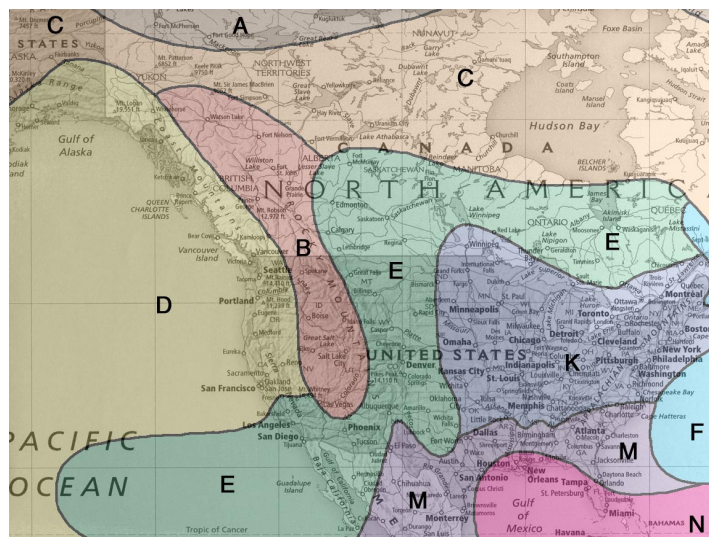
### Installation

Includes 3/4" liquid tight non-metallic conduit adapter

Receive signal level and link quality voltage test points

Minimum link distance: 160 meters

## North American Rain Zones (ITU Model)



## Maximum Link Distance (Meters)

Rain Zone	Required Link Availability		
	99.9%	99.99%	99.999%
A	1820	1680	1500
B	1790	1580	1340
C	1760	1520	1250
D	1670	1450	1160
E	1730	1400	1110
F	1670	1320	1030
K	1580	1170	910
M	1400	1010	800
N	1190	850	690

### BridgeWave Communications

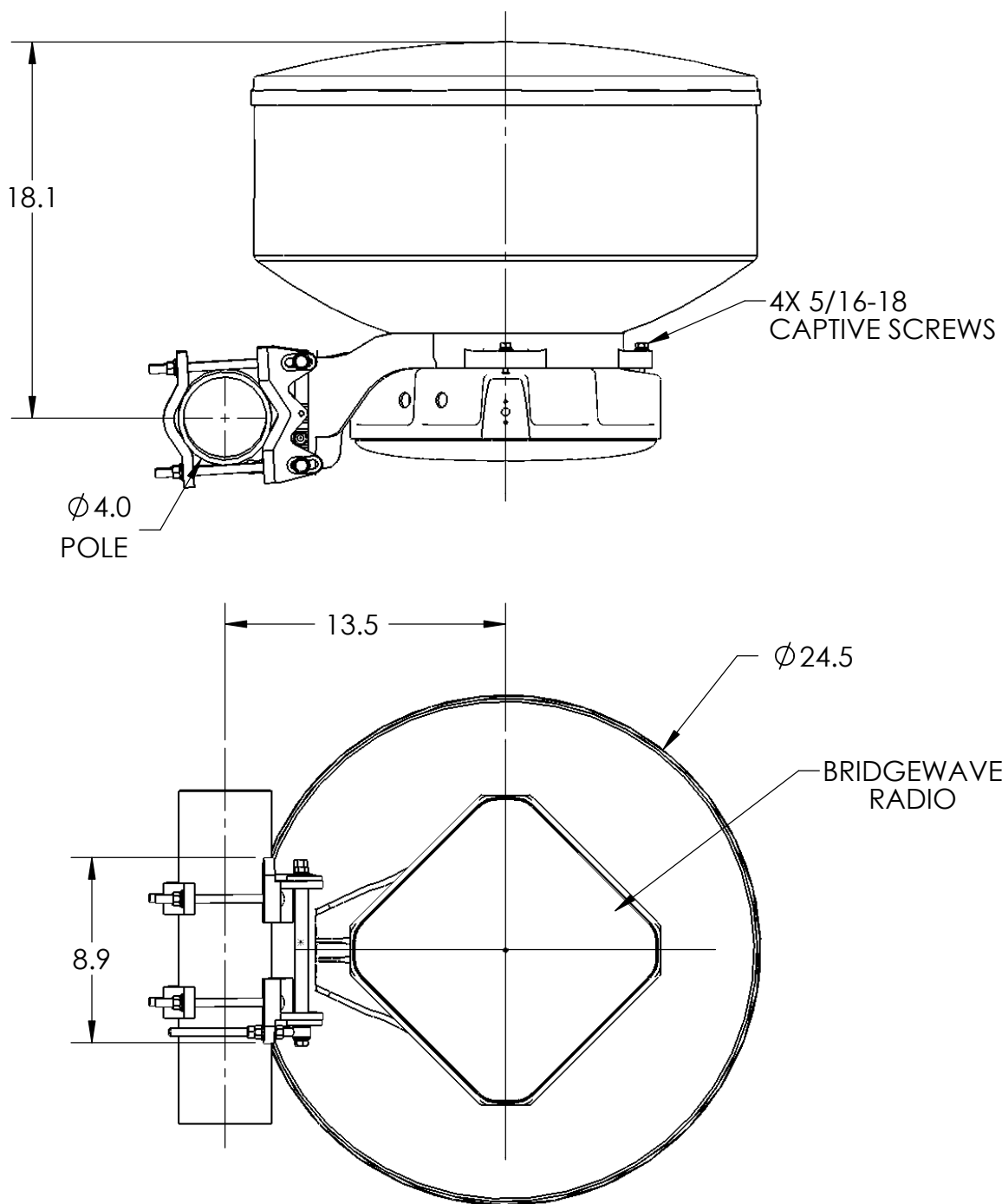
3350 Thomas Road

Santa Clara, CA 95054 USA

408.567.6900

[sales@bridgewave.com](mailto:sales@bridgewave.com)

ZONE	REV.	DESCRIPTION	DATE	APPROVED
	-	INITIATED DRAWING	050526	



## 60cm HIGH PERF. BRIDGEWAVE ANTENNA

SIZE	DWG. NO.	REV.
A	HP2-60B	-
SCALE: 1:16	WEIGHT:	SHEET 1 OF 1

NAME	DATE
DRAWN M. HADLEY	050526
CHECKED .	.
MECH APPR. .	.
ELEC APPR. .	.
MFG APPR. .	.
COMMENTS:	

DIMENSIONS ARE IN INCHES UNLESS OTHERWISE NOTED. TOLERANCES AS FOLLOWS DECIMAL ANGULAR X = $\pm .10$ $\pm 0'30''$ XX = $\pm .020$ XXX = $\pm .005$	
MATERIAL	SEE NOTES
FINISH	SEE NOTES
DO NOT SCALE DRAWING	

### PROPRIETARY AND CONFIDENTIAL

THE INFORMATION CONTAINED IN THIS DRAWING IS THE SOLE PROPERTY OF RADIOWAVES INC. ANY REPRODUCTION IN PART OR AS A WHOLE WITHOUT THE WRITTEN PERMISSION OF RADIOWAVES INC. IS PROHIBITED.