

## Smart LED Strip Controller User Manual

This smart product "Smart LED Strip Controller"  
belongs to "SSG Smart Home" skills in Alexa APP

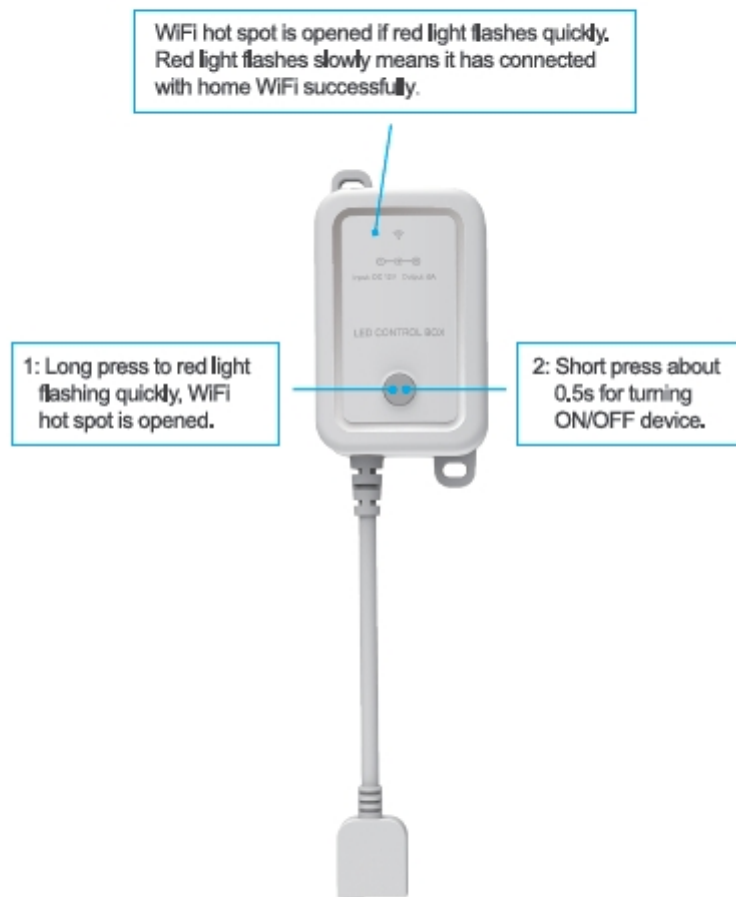


Thanks for purchasing our products, please read this instruction before using

## This product connects with LED strip



## Product function button and indicator light introduction



## Download and Install APP

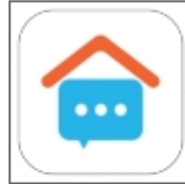
Search the keyword "Ama home" in APP Store or Google Play or scan the QR codes below to download the APP.



Android



iOS



Ama home

**Register "Ama home" APP login account (If you have had this APP, you don't need to download again, please use it directly)**

**Warm Prompt:**

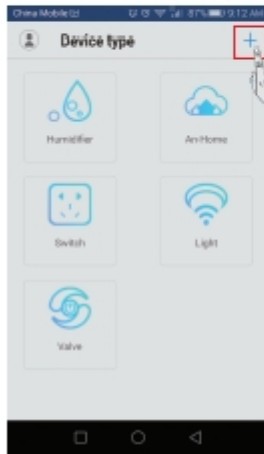
1. Ama home can share one account with "SSG Smart Home" series products in Alexa APP.
2. If you have an account of "SSG Smart Home" series products , you don't need to register again. You can use your account and password of "SSG smart home" to sign in "Ama home " directly.
3. If your Alexa APP has not bind with "SSG Smart Home" account, please register.

**Note:**

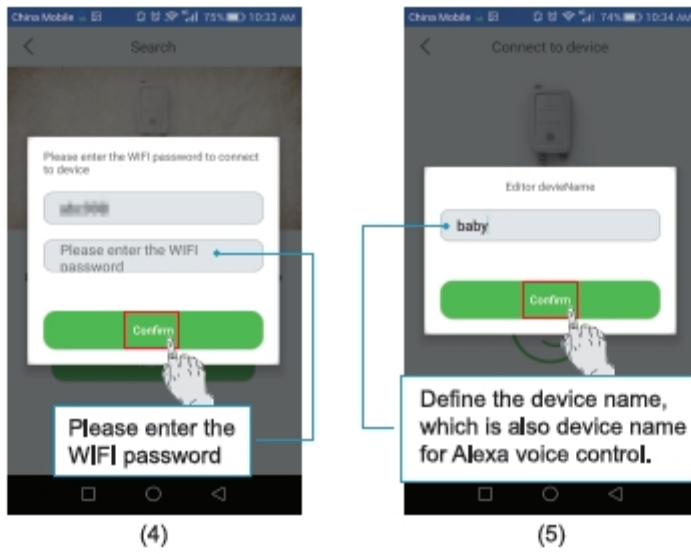
If you couldn't receive the verification code even after a long time, please check the Spam Box of your email.

## APP connects outlet strip

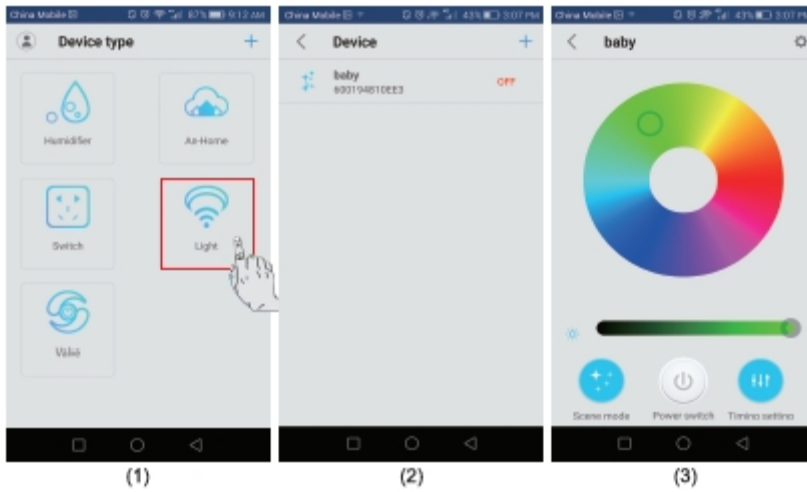
Enter "Ama home" APP, please make sure that your phone has connected with WiFi at home (this device only supports 2.4G network, can not support 5.0G)



Long press WiFi hotspot button about 5s to red light of WiFi indicator flashing quickly, then make a tick and tap "NEXT".



**When add device “baby” successfully, tap the device to get more setting.**



**FCC Caution:**

This device complies with part 15 of the FCC Rules. Operation is subject to the following two conditions: (1) This device may not cause harmful interference, and (2) this device must accept any interference received, including interference that may cause undesired operation.

Any Changes or modifications not expressly approved by the party responsible for compliance could void the user's authority to operate the equipment.

**Note:** This equipment has been tested and found to comply with the limits for a Class B digital device, pursuant to part 15 of the FCC Rules. These limits are designed to provide reasonable protection against harmful interference in a residential installation. This equipment generates uses and can radiate radio frequency energy and, if not installed and used in accordance with the instructions, may cause harmful interference to radio communications. However, there is no guarantee that interference will not occur in a particular installation. If this equipment does cause harmful interference to radio or television reception, which can be determined by turning the equipment off and on, the user is encouraged to try to correct the interference by one or more of the following measures:

- Reorient or relocate the receiving antenna.
- Increase the separation between the equipment and receiver.
- Connect the equipment into an outlet on a circuit different from that to which the receiver is connected.
- Consult the dealer or an experienced radio/TV technician for help.

This equipment complies with FCC radiation exposure limits set forth for an uncontrolled environment. This equipment should be installed and operated with minimum distance 20cm between the radiator & your body.