

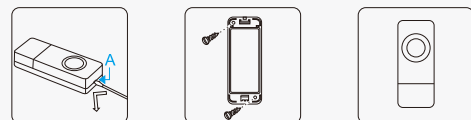
Mounting with screw/anchors:

Please prepare an electric drill, a Phillips-head screwdriver and a small flat-bladed screwdriver before installation.

(1). Insert a flat-bladed screwdriver into the slot A, at the base of the transmitter, carefully lever the cover and base apart.

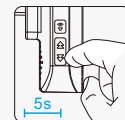
(2). Attach the back cover to wall and make two marks at the location of the two mounting holes.

(3). Drill two holes on the marked locations, insert 2 expansion bolts provided in the package if necessary. Finally, screw up back cover and put back the front case.

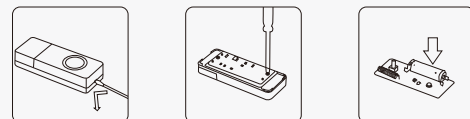


7

5. Reset: press button for 5s to reset the receivers, the reset is successful when you hear the default doorbell sound with flashing LED.



6. Transmitter battery replacement: Remove the back of the case by pushing in the tab on the transmitter button with a small screwdriver, the battery is under the PCB. remove screws from PCB to change battery and then screw up the PCB to the front of case to put back in place. **(Battery Model:23A)**



8

Troubleshooting

1. The receiver doesn't sound

- Check the doorbell button battery, replace it if necessary.
- The plug of receiver is loose.
- The receiver could be out of range of the doorbell button.
- The receiver may not have paired with the doorbell button.
- Check that the volume control is not at the minimum setting.

2. Operating range is reduced

- Metal structures, including uPVC door frames can reduce the range of the doorbell. Avoid mounting the transmitter or receiver on or near metal structures.
- Other equipment can cause radio interference that affects your doorbell.
- Walls and ceilings will reduce the range.
- Weak batteries will reduce range. Replace every 12-18 months.

9

Features

- Modern and stylish design
- 52 different selectable tunes
- 4-level adjustable volume
- 1000 feet operation range (in the open air)
- Easy to install and use
- Easy to add additional transmitters or receivers
- IP55 waterproof transmitter
- Low power consumption

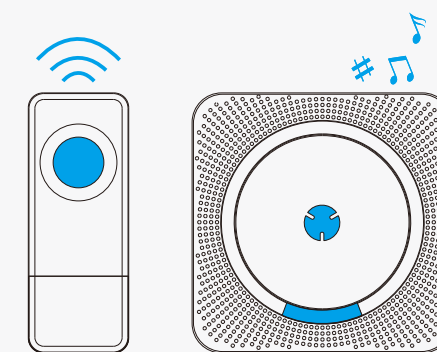
10

Specifications

Working voltage of plug-in receiver:	AC 110V (US)/ AC 220V (EU,UK,AU)
Battery in transmitter:	12V 23A alkaline battery
Power consumption of transmitter	< 10mW
Wireless range:	1000 feet(in the open air)
Audible range	300 feet
Selectable tunes:	52
Volume range:	25~110 dB, 4 levels
Expandable (Yes or No):	Yes
Working frequency:	433.92 MHz
Working temperature:	-30°C~70°C

11

WIRELESS DOORBELL

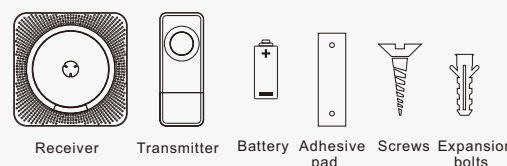


Please carefully read this user manual before using and installation

Brief Instruction

Thank you for purchasing our Wireless Doorbell .It's an ideal unit for easily installing a doorbell without the hassle of wiring. Simply plug the receiver to an AC outlet and mount the transmitter where needed and you are ready to go! The doorbell features 52 tunes and four levels of volume to suit your needs and can reach a distance of up to 1000FT when there are no obstructions.

Package contents



Important: Please carefully pull out the insulating strip next to the battery in order to use the transmitter.

1

What You Should Know Before Installation

1. The transmitter(s) supplied with this kit is(are) paired with receiver(s) and set to default tune "Dingdong", IF NOT, please refer to the "Quick Start" to pair the transmitter(s) with receiver(s) and set your favorite tune(s).

2. Metal, walls, ceilings and other RF signals from electronic devices can affect the radio signal of the wireless doorbell. Generally the operating range can reach up to 1000 feet in the open air and non-interference environment, and 100~500 feet within obstructive environments.

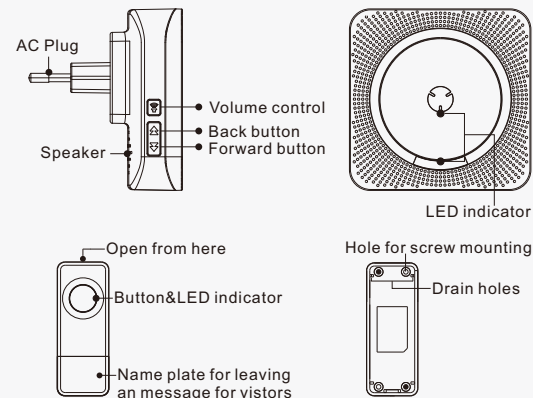
3. It is not advisable to mount the transmitter onto metal surfaces as the material can block RF signals between the transmitter and the receiver. However, if this is the only option then we recommend that you use the sticky pad provided as opposed to using the provided screws.

4. The battery using in transmitter is 23A, Operating range will decrease if battery in transmitter is in low power status.

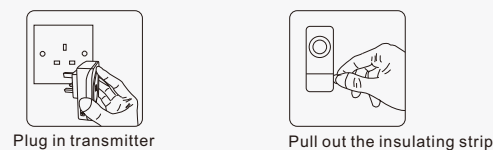
5. The push button is waterproof (IP55) and is protected from rain showers, but it is not advisable to mount the transmitter in the outdoor directly without any shelter which could accelerate aging of plastic materials.

2

Quick Start



3

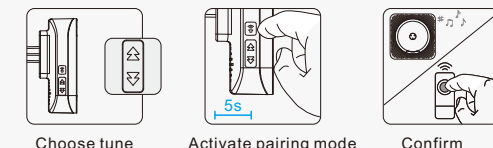


Plug in transmitter

Pull out the insulating strip

2. Tune setting or pairing a (an additional) transmitter to receiver :

- (1) Press button or Button to choose your favorite tune, the receiver playing is the tune selected.
- (2) Hold the button for about 5s and release until a Ding-dong is heard and the LED indicator starts flashing.
- (3) Press the transmitter button to send a signal to receiver to confirm, when the tune setting (pairing) is successful, the receiver will play the selected tune automatically.



Choose tune

Activate pairing mode

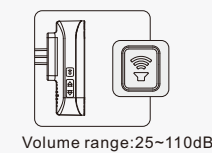
Confirm

4

Important:

- (1) The steps of changing a new tune or pairing an additional transmitter are the same.
- (2) Pairing mode will last for 5s only and quit automatically after pairing is completed.
- (3) The pairing mode is only available for a transmitter each time. **For two or more transmitters**, please follow the steps (1)-(3) above once again to get transmitters paired one by one.
- (4) Maximally one receiver can pair with up to 50 transmitters, and the tune can be set different for each transmitter

3. Volume control: press button on the receiver, this switch toggles between High and Low volume.



Volume range:25~110dB

5

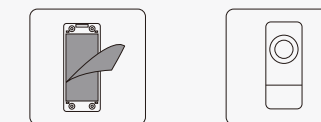
4. Mounting the doorbell transmitter

Important: test the operating range before final installation to make sure the position where you want to mount the doorbell transmitter is within the range of receiver.

Mount using either the double-sided adhesive pad, or the screws provided.

Mounting with double-sided adhesive tap:

- (1). To ensure proper adhesion, please clean the surface of the intended location prior to the installation.
- (2). Remove one side of the double-sided adhesive tap and stick it to the underside of the transmitter, tear off the other side and put transmitter onto wall, then press for 10s.



Note: please note that the double-sided adhesive tap will have poor adhesion ,if put on dirty or uneven surface. sunlight or rain will affect the adhesion and may cause the transmitter to come off.

6

FCC Caution:

This device complies with part 15 of the FCC Rules. Operation is subject to the following two conditions: (1) This device may not cause harmful interference, and (2) this device must accept any interference received, including interference that may cause undesired operation.

Any Changes or modifications not expressly approved by the party responsible for compliance could void the user's authority to operate the equipment.

Note: This equipment has been tested and found to comply with the limits for a Class B digital device, pursuant to part 15 of the FCC Rules. These limits are designed to provide reasonable protection against harmful interference in a residential installation. This equipment generates uses and can radiate radio frequency energy and, if not installed and used in accordance with the instructions, may cause harmful interference to radio communications. However, there is no guarantee that interference will not occur in a particular installation. If this equipment does cause harmful interference to radio or television reception, which can be determined by turning the equipment off and on, the user is encouraged to try to correct the interference by one or more of the following measures:

- Reorient or relocate the receiving antenna.
- Increase the separation between the equipment and receiver.
- Connect the equipment into an outlet on a circuit different from that to which the receiver is connected.
- Consult the dealer or an experienced radio/TV technician for help.