



Index	Safety Precautions	Features	Installing	Device Driver	How to Use	Utilities	Storing/Cleaning	Troubleshooting	Specifications
-------	--------------------	----------	------------	---------------	------------	-----------	------------------	-----------------	----------------



Samsung's OMS (Optical Media Solution) Customer Support Website (<http://samsung-ODD.com>) offers the latest versions of firmware for ODD products, user instructions and product information.



#### The Statement of Warranty

<http://samsung.com>  
<http://samsung-ODD.com>

# Index

---

▶ **Main Page**

---

▶ **Safety Precautions**

- ▶ Safety Precautions
- ▶ During Installation
- ▶ During Operating
- ▶ Others
- ▶ WEEE

▶ **Features**

- ▶ Exterior
  - ▶ System Requirements
  - ▶ Features
- 

▶ **Setting up the DVD±R/RW Drive**

- ▶ Installing Drive
- ▶ Removing USB Converter Cable

▶ **Firmware Update and Confirming the Installation**

- ▶ Firmware Update
  - ▶ Confirming the Installation of Device Driver
  - ▶ USB 2.0 Driver Download and Install
- 

▶ **How To Use The DVD±R/RW Drive**

- ▶ How to Use the Drive
- ▶ How to Use DVD±R/RW and Other Discs
- ▶ MAGIC SPEED

▶ **Storing/Cleaning Disc**

- ▶ Storing the Disc
  - ▶ Cleaning the Disc
  - ▶ When the on/off Light Blinks
- 

▶ **Deleting Utilities**

▶ **Troubleshooting**

- ▶ Troubleshooting
  - ▶ Caution: Possible Errors
- 





▶ **Product Specifications**

# Safety Precautions

## Safety Precautions

Important to read and understand at all times



 Warning	<p>This symbol indicates explanations about extremely dangerous matters. If users ignore this symbol and handle the device the wrong way, serious injury or death could result.</p>
 Caution	<p>This symbol indicates explanations about dangerous matters. If users ignore this symbol and handle the device the wrong way, damage to home or property could result.</p>
	<p>Important to read and understand at all times</p>
	<p>Do not disassemble</p>

<ul style="list-style-type: none"> <li>■</li> </ul>	<p>Always make sure that the disc does not have a crack before use. If the disc has a crack (especially around the center hole), it is recommended to make a copy immediately and use the copy instead. When a cracked disc is used continuously, the size of the crack is likely to grow and this will eventually result in irreparable damage to the disc.</p>
---	--

# Safety Precautions

## During Installation

### Installation



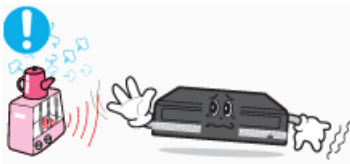
- ❖ Do not drop the drive, and protect it from severe shocks.
- It can damage the drive or cause it to malfunction.



- ❖ Do not place the drive in direct sunlight.



- ❖ Avoid low or high temperature environments.



- ❖ Avoid high-humidity environments.

# Safety Precautions

## During Operating

### Operating



- Handle with caution to prevent damage from external shock.



- Do not drop the drive, and protect it from severe shocks.
  - It can damage the drive or cause it to malfunction.



- Do not move the drive while in operation and do not attempt to open the disc tray by force. Make sure to close all working programs before attempting to open the tray and always use the open/close button.



- Do not insert a pin into the emergency opening while in operation.



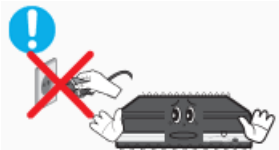
- Do not insert hands in the tray while in operation. This may cause damage to the product or human body



- Do not use cracked, distorted or damaged discs.



- In particular, a disc with a crack on the inner tracks may break while in use.



- Do not use cracked, distorted or damaged discs.



- In particular, a disc with a crack on the inner tracks may break while in use.

- Always check to be sure the disc is not cracked before use. If you find a crack on the disc (especially around the center hole), make a copy of the disc immediately and use the copy instead. Continued use of a cracked disc will cause the crack to become bigger, resulting in irreparable damage to the disc.

- Do not use low-quality discs (illegal, scratched, damaged, etc.).

- Samsung is not responsible for any loss resulting from the use of such discs.

# Safety Precautions

## Others

### Others



- ❖ Never allow food particles or foreign substances to enter the drive casing.



- ❖ To protect against the risk of fire, do not spill such liquids as alcohol and benzene on the drive.



- ❖ Do not disassemble, attempt to repair or modify the device without express approval as directed in the manual.
- To reduce the risk of damage, electric shock, and fire.



- ❖ Do not disassemble, attempt to repair or modify the device without express approval as directed in the manual.
- To reduce the risk of damage, electric shock, and fire.

# Safety Precautions

## WEEE

### WEEE

#### **Correct Disposal of This Product (Waste Electrical & Electronic Equipment)**

(Applicable in the European Union and other European countries with separate collection systems)



This marking shown on the product or its literature, indicates that it should not be disposed with other household wastes at the end of its working life. To prevent possible harm to the environment or human health from uncontrolled waste disposal, please separate this from other types of wastes and recycle it responsibly to promote the sustainable reuse of material resources.

Household users should contact either the retailer where they purchased this product, or their local government office, for details of where and how they can take this item for environmentally safe recycling.

Business users should contact their supplier and check the terms and conditions of the purchase contract. This product should not be mixed with other commercial wastes for disposal.

# Features

## Front



- |                      |                |
|----------------------|----------------|
| 1. Emergency Hole    | 2. On/Off Lamp |
| 3. Open/Close Button | 4. Disc Tray   |

- Design and specifications are subject to change without prior notice.

## Back



- |                       |               |
|-----------------------|---------------|
| 1. USB Interface Port | 2. Power Port |
| 3. Power Switch       |               |

## Components

- ▶ External DVD±R/RW Drive
- ▶ USB 2.0 Converter Cable
- ▶ AC Power Adapter
- ▶ Drive installation instruction sheets
- ▶ Software programs  
(software: Nero Express 6, In CD, Nero Vision Express, Nero ShowTime, Nero BackItUp, Nero Recode)
- In case you need to return the purchased product, be sure to include all the accessories provided with the product to receive a refund.
- The type of accessories varies depending on product model.



# Features

## System Requirements

● You need to have an IBM-compatible PC with the following specifications.

Item	Description
OS	Microsoft Windows 98 SE/2000/Me/XP(SP 1.0 or higher)
CPU	Pentium3 800MHz or greater IBM-compatible PC (Recommendation: Pentium4 2.0GHz or above)
RAM	256Mbytes or greater
Interface	USB 2.0 Interface connector

# Features

## Features

### Versatile Multimedia Features

- ▶ DVD-R : Read / Write
- ▶ DVD+R : Read / Write
- ▶ DVD-ROM : Read
- ▶ DVD-R Dual : Read / Write
- ▶ CD-RW : Read / Write / Rewrite allowed
- ▶ DVD-RW : Read / Write / Rewrite allowed
- ▶ DVD+RW : Read / Write / Rewrite allowed
- ▶ DVD+R Dual : Read / Write
- ▶ CD-R : Read / Write
- ▶ Supports Read (playback) for various types of discs

▶ See table below for details

	Disc Type	Writable	Rewritable	Read
CD	CD-STAMP	x	x	O
	CD-R	O	x	O
	CD-RW	(O)	O	O
DVD	DVD-STAMP	x	x	O
	DVD-R For General Ver 2.1	O	x	O
	DVD-RW Ver 1.1	(O)	O	O
	DVD+R(Dual) Basic Ver 1.11	O	x	O
	DVD-R(Dual)	O	x	O
	DVD+RW Basic Ver 1.2	(O)	O	O

**Writable** : write once, read many times.

**Rewritable** : write data one or more times.



### DVD Recommended Disc Types

- ▶ **DVD-R Media**  
Taiyo-Yuden, TDK, MKM, Hitachi Maxell, Fuji Film, PVC, Panasonic, RiTEK, CMC, UNIFINO
- ▶ **DVD-RW Media**  
TDK, MKM, JVC, PVC, RiTEK, CMC
- ▶ **DVD+R Media**  
RICOH, Taiyo-Yuden, MKM, RiTEK, CMC, Prodisc, Optdisc
- ▶ **DVD+RW Media**  
RICOH, MKM, RiTEK, CMC
- ▶ **DVD+R Dual**  
MKM

### CD Recommended Disc Types

- ▶ **CD-R Media**  
Taiyo-Yuden, RICOH, MKM, Hitachi Maxell, Fuji Film, RiTEK(Phtharo), CMC, Pioneer, Princo, TDK
- ▶ **CD-RW Media**  
RICOH, MKM, RiTEK, CMC
- ▶ **HS CD-RW Media**  
RICOH, MKM, CMC
- ▶ **US CD-RW Media**  
MKM

### Buffer underrun prevention technology included

- ▶ What is " buffer underrun prevention technology " ?  
A technology to prevent "buffer underrun" errors in which the data transmission speed is not as fast as the data writing speed when data is being recorded on a CD.

# Features

## ● Reading / Recording Speed

### ▶ Reading Speed(MAX)

DVD-ROM(S)(16X), DVD-ROM(D)(8X), DVD-R (12X), DVD-RW (8X), DVD+R (12X), DVD+RW (8X), CD-ROM (48X), CD-R (40X), CD-RW (40X), DVD+R DUAL (8X), DVD-R DUAL (8X)

### ▶ Recording Speed(MAX)

DVD+R DUAL (5X), DVD+RW (8X), DVD-R (16X), DVD+R (16X), DVD-RW (6X), CD-R (48X), CD-RW (32X), DVD-R DUAL (4X)

# Installing DVD±R/RW Drive

## Installing Drive

### 1. Turn the PC on.



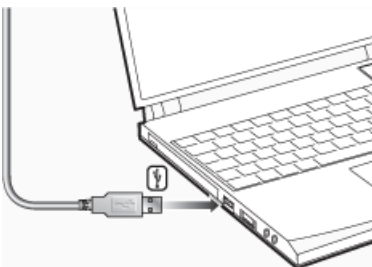
### 2. Connect the necessary cables, then turn on the drive

- Connect the USB Cable to the drive 's USB connector.
- Connect the supplied AC power cord to the supplied AC adapter.

Then connect the AC adapter to the drive 's DC IN jack, and connect the power cord to the power outlet.



### 3. Connect the other end of the of the USB cable to your computer.



Caution

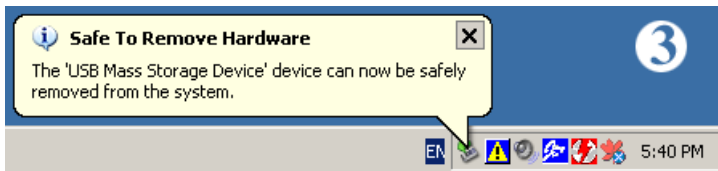
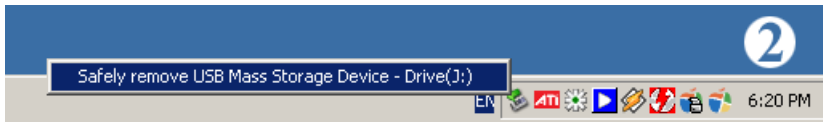
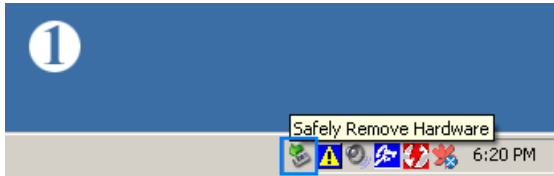
If your computer is not equipped with a USB connector, install a USB interface card.

# Installing DVD±R/RW Drive

## Removing USB Converter Cable

● This drive uses Plug & Play function designed for Windows. Follow the procedures below to use a USB converter cable.

1. Close all the software programs which are currently being used.
2. Click the icon at the right bottom of the screen as shown in the picture.



3. Disconnect the USB converter cable.



Do not disconnect the USB converter cable while the drive is in operation or the computer is getting started.

## Firmware Update and Confirming the Installation

### Firmware Update

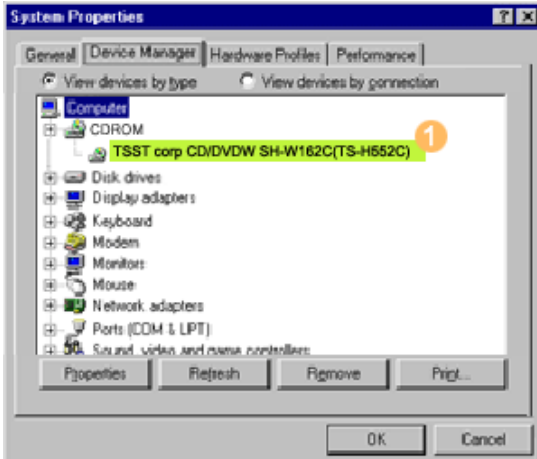
1. Go to <http://samsung-ODD.com>
2. Click Firmware on the menu bar (in the upper right-hand corner).
3. Click Firmware Downloads. Check for your drive model and start downloading.

# Firmware Update and Confirming the Installation

## Confirming the Installation of Device Driver

### Confirming Using [Device Manager]

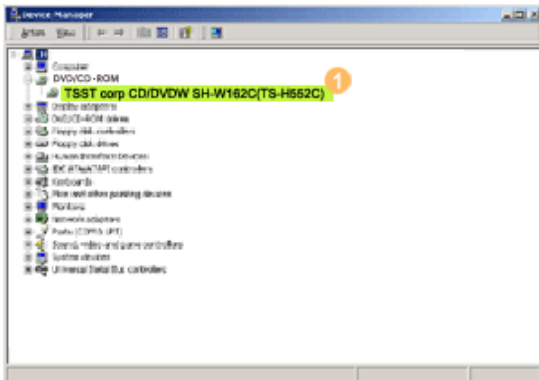
#### Windows 98/Me



1. Click [Start] - [Settings] - [Control Panel] - [System]
2. Click on the [Device Manager] tab in the System Properties window.
3. Click CDROM drive in the Device Manager window.

1 in the picture in the left appear if the driver is installed properly.

#### Windows 2000

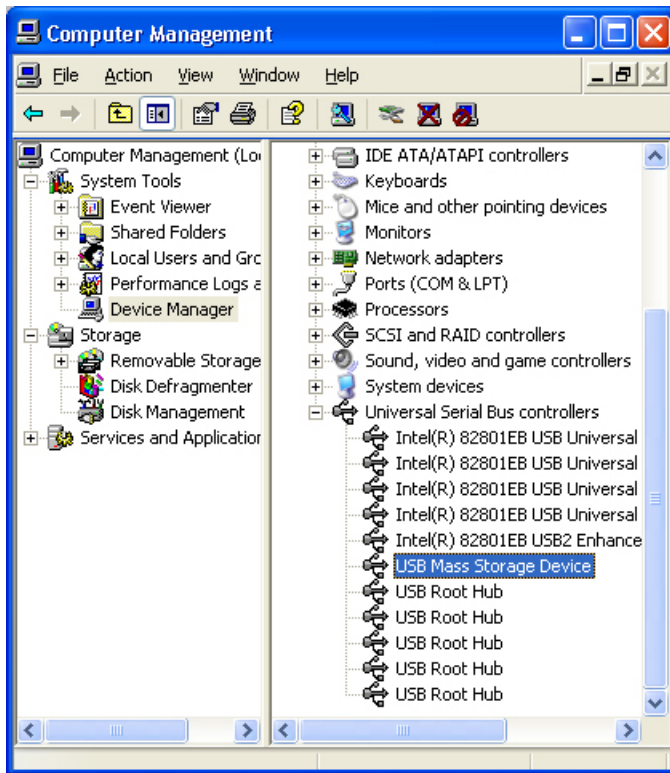


1. Click [Start] - [Settings] - [Control Panel] - [System]
2. Click on the [Hardware] tab in the System Properties window and then click on the [Device Manager] tab.
3. Click DVD/CD-ROM drive in the Device Manager window.

1 in the picture in the left appear if the driver is installed properly.

## Firmware Update and Confirming the Installation

### ▶ Windows XP



1. Go to [Start] - [Settings] - [Control Panel] - [Performance and Maintenance]
  2. Click [Administrative Tools] icon in the Performance and Maintenance window.
  3. Click [Computer Management] icon in the Administrative Tools window.
  4. Click [Device Manager] icon in the Administrative Tools window and then click DVD/CD-ROM drive.
- 1 in the picture in the left appear if the driver is installed properly.



## Firmware Update and Confirming the Installation

### USB 2.0 Driver Download and Install

#### ● Instructions on Installing USB Driver for Windows 98SE

This USB Drive is a Plug&Play USB storage device. If you are using any of the following Operating System: Such as Windows ME, Windows 2000 and Windows XP, all you need to do is plug it to your computer properly. Then the drive is ready to use.

Whereas, a PC using the Windows 98SE OS will not recognize this USB drive if you are installing this drive for this first time. Therefore, you will need to install a driver into your computer for this USB drive to properly install to your computer.

1. Go to [Http://samsung-ODD.com](http://samsung-ODD.com)
2. Click Firmware on the menu bar (in the upper right-hand corner)
3. Click USB 2.0 Driver Download. Check for your drive model and start downloading.



## How To Use The DVD±R/RW Drive

### How to Use the Drive

When the On/Off light is orange, do not turn the PC off or remove the DVD±R/RW Drive as it may cause damage in the drive.

#### ● How to Use a Horizontally Installed Drive

You can use **3.15 Inch or 4.72 Inch (8cm or 12cm) discs.**

The drive cannot read the disc properly if any part of the disc is placed outside the tray guiding line.



#### ● How to Use a Vertically Installed Drive

This drive can be installed vertically.

You can use only the **4.72 Inch (12cm) discs.**  
**(You cannot use the 3.15 Inch (8cm) discs)**

The drive cannot read the disc properly if any part of the disc is placed outside the tray guiding line.



## How To Use The DVD±R/RW Drive

### How to Use DVD±R/RW and Other Discs



The DVD±R/RW Drive allows writing DVD RW discs using Nero Express and enables "packet writing" (high-speed recording) using InCD. The drive also allows writing DVD R discs using Nero Express.



Caution

**Unauthorized copying of DVD or software titles is illegal and the individuals that make illegal copies will be held responsible for any copyright infringement. Using low-quality discs may lengthen the recording time or not supporting due to reduction in double speed.**

- ▶ You can use the DVD±R/RW Drive to playback music CDs, CD-ROM, CD-R/RW, or DVD-ROM discs, like a CD-ROM drive or a DVD-ROM drive. If your computer recognizes the [CD-ROM] icon designated to the DVD±R/RW Drive as the 'E:' drive, insert a CD-ROM or a DVD-ROM disc and access the 'E:' drive.  
(The actual drive letter of the DVD±R/RW Drive may vary depending on the user's system environment.)
- ▶ To Playback a DVD Video Disc :
  - You need a DVD decoder board or the DVD decoder software program.  
(Provided with WinDVD Show TIME)
  - Use WinDVD Show TIME to change the region code of the DVD±R/RW Drive.

### DVD Region Protection Coding (RPC):

The RPC feature is supported on DVD players and is used with DVD-video discs (such as movies). Currently, the motion picture industry has divided the world into different regions or zones that correspond to the regional markets into which the motion picture industry releases movies. Simply put, RPC codes are placed on movies marketed throughout the world, based on the region of the world in which they are being sold. These RPC codes help control and prevent pirating of new movies into other motion picture regions prior to their true release dates within those markets.

The SH-W162C(TS-H552C) DVD±R/RW drive supports RPC phase II. In the RPC-2 mode, the local code can be changed by users. RPC-2 is selected by default for the SH-W162C(TS-H552C) DVD±R/RW drive. You can change the region code up to five times via an MPEG application.

Please contact your dealer or local SAMSUNG representative if you wish to change the local code more than five times.

## MAGIC SPEED

### ▶ What is a MAGIC SPEED?

The MAGIC SPEED provides a function that user optionally chooses the disc reading speeds, **high speed (Max speed) mode** and **low noise (X32) mode**.

The **low noise mode** offers the best PC environment by minimizing a driving noise.

The **Magic speed** not only functions to decrease a noise by reducing a reading speed but also gets a preventive effect of a disc breakage, which could be occurred by a high speed. Its purpose is to supply the stable PC environment to user.

### ▶ Explanation of MAGIC SPEED Mode and Ways to use

#### 1. Explanation of MAGIC SPEED Mode

- ✦ **The Maximum Speed Mode** : Set up this mode when you want to read a disc by the maximum speed which is supplied by a drive.
- ✦ **The Low Noise Mode** : Set up this mode when you want to read a disc by a stable speed, the low speed (X32).
- ✦ **The mode selected and set using the Magic Speed feature does not change when you connect the driver to a different PC. Make sure you check the settings before use.**

**Caution:** In case of a cracked disc, the disc would be broken if operating in the maximum speed. Therefore, it is recommended to operate in the low noise mode or to immediately make a copy and use it.

#### 2. Ways to Use the MAGIC SPEED

- ✦ The first of all, please install the **Magic Speed** program from Samsung's homepage.
- ✦ Operate the program by clicking the right mouse button on the **MAGIC SPEED Tray Icon**.
- ✦ Select a desired mode from a program window, and click "**Setup**". The reading speed of a drive operates in a selected mode.
- ✦ Close the program window by selecting "**Close**".  
At this time, the reading speed will keep operating by the changed speed unless you would change a mode and would end a program.
- ✦ It is recommended to use a "Maximum Speed Mode" when operating a Data Copy & a Disc Copy and to use a "Low Noise Mode" when operating a general operation.
- ✦ **Other Function**  
Method to release an automatic operation: This program automatically operates when PC is booting. If you wish to release the automatic operation, release the selected item, Automatic Operation in the Tray Icon menu.

### ▶ Place to download a MAGIC SPEED

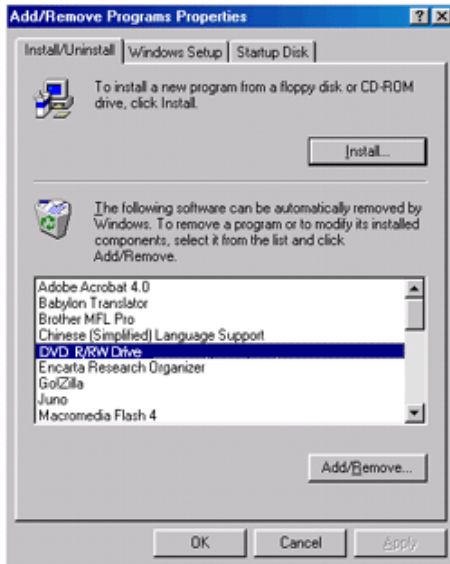
- ✦ Samsung's Customer Service Homepage (**URL:www.samsung-ODD.com**)
  - Select a Firmware > MAGIC SPEED.

# Deleting Utilities



Click [Start] - [Setting] - [Control Panel] - [Add/Remove Programs] and a window as shown below appears.

## [ Windows 98 / Me ]



Click the [Add/Remove] button to remove the program.

## [ Windows 2000 ]



Click the [Add/Remove] button to remove the program.

## [ Windows XP ]



Click the [Add/Remove] button to remove the program.

## Storing/Cleaning Disc



**This part of the manual is to prevent damages or data loss.  
Read carefully and use the device properly.**

### Storing the Disc

- ▶ Do not place it under the direct sunlight.
- ▶ Place it so that it sits on its side on a flat surface.
- ▶ Do not scratch or place a label on the disc.
- ▶ Handle the disc with caution to prevent damage from external shock.
- ▶ Do not expose it to severe temperature fluctuations.  
(Exposure to such environment may cause congealing.)



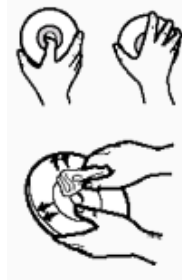
## Storing/Cleaning Disc



This part of the manual is to prevent damages or data loss.  
Read carefully and use the device properly.

### Cleaning the Disc

- Do not touch the surface of the disc.  
Place your fingers on the edge of the disc to hold.
- Clean the disc lightly with soft cotton cloth, starting from the center and move to the edge of the disc.
- Use only disc cleaning liquids. Do not use benzene, paint thinner, or any other solvents.



**If the disc surface becomes dirty with fingerprints, foreign substances or dust, the disc may not function properly.**

## Storing/Cleaning Disc

### When the on/off Light Blinks

On/Off Lamp	Meaning
Disc Lead-In	Green: Blinks every 0.3 seconds.
Writing	Green: Blinks every 0.3 seconds.
Reading	Green: Blinks every 0.3 seconds.
Audio Playback [Analog Mode]	Green: Blinks every 0.3 seconds.
Audio Playback [Digital Mode]	Green: Blinks every 0.3 seconds.
Standby	Off
No Disc	Off



The indicator light turns off when the drive is not in use (standby) after disc lead-in.



# Troubleshooting

## General Problems

Problem	Meaning / Solution
<b>The tray won't open.</b>	See if the Drive on.
	If the tray still won't open with the power on, turn the power off and insert a pin(paper clip) into the emergency hole to open.
<b>The tray won't close.</b>	Make sure the disc has been inserted properly.
<b>The PC is not working properly.</b>	See if the drive is properly connected to the PC. See if the floppy disc remains in the PC.
<b>The drive is not working properly.</b>	See if the drive is connected properly to the PC.
	See if the device drive program has been installed properly.
<b>No sound is heard from an audio CD.</b>	Check that the sound card is operational.
	Check the condition of the CD and wipe the surface of the CD clean before use.
<b>The computer doesn't recognize the drive.</b>	USB cable is not connected properly between the computer USB port and the drive .
	Ensure that both connectors of the USB cable is properly connected to the USB ports on the computer and the drive.
	Can be an OS problem. Try reinstalling the Windows OS program.
<b>The system won't read the disc.</b>	See if the system detects the drive.
	Make sure you use the types of discs that are supported by the drive.
	See if the on/off light turns into green.
	Make sure you inserted the disc with the label facing up.
	Make sure you are using the right program for disc playback.
	See if the disc is clean.
	See if any congealing has occurred.
Make sure the region code of the drive matches the disc number.	

# Caution: Possible Errors

## Caution: Possible Errors

DVD±R/RW drives record data on the disc by applying laser light onto the surface of the CD DVD, and therefore writing errors may occur if you use a damaged CD DVD, for example. Be sure to eliminate the following error-causing elements before you start writing:

\* The following settings are recommended for all DVD±R/RW drives:

**1. Avoid a situation that requires multitasking, and remove turn off the screen saver.**

- A buffer underrun may occur if the system multitasks while the DVD±R/RW CD-RW drive is writing/erasing.

**2. Block any outside attempt to access the host PC during a writing session.**

- An error may occur if another user accesses the printer connected to his/her the system via the network during a writing session.

**3. Disable the CD auto - run feature of the CD.**

- Inserting an auto - run-enabled CD in to another drive connected to the same system during a writing/erasing session may cause an error.

➤ How to disable the auto-run feature: Windows 98/ME

GO to Start ▾ Settings ▾ Control Panel ▾ System ▾ Hardware ▾ Device Manger ▾ CD- ROM Settings . Disable Insert AutoRun.

**4. It is recommended that you use the image file format when you write a large number of small-sized files.**

- When there are a large number of small-sized files to write, the system's transmission rate drops and the Superlink feature works at a more frequent rate, resulting in lower writing quality.
- If you are doing a CD-to-CD write, it is not necessary to check to see if you have available space on your hard disc beforehand.

However, in the case of image files, it is recommended that you be sure you have at least twice the amount of space needed for the data on your hard disc, as image files are copied to the hard disc before they are copied to the CD.

**5. Use a regulation-length (46cm) or shorter E-IDE cable.**

- Using an E-IDE cable longer than 46cm may cause a transmission error.

**6. Do not use more than one type of writing software.**

- Before you install a writing program, be sure to first uninstall existing versions of the program or other writing program ( s ) and reboot the system first .

(The Windows operating system may be damaged if you install the Korean version while the English version remains on the system.)

- **Use only the writing software provided by Samsung.**  
**You may experience writing errors if you use with other writing programs.**

# Caution: Possible Errors

## The write speed for a disc can be restricted if:

### 1. The disc has bad properties data , and or there are other discs with different properties available under the same ID.

The drive's write strategy is set in a way that the drive examines to examine the disc properties and determine s the optimal write conditions for those properties.

For example, many disc makers do not bother to insert property information distinguishing 48X disc s from 32X disc s . Since the two types of discs have the same properties data , although they actually have different properties, it is often impossible to respond to the situation with a single write strategy. In order to ensure stable writing , it is necessary to downgrade the write speed.

If discs from two different disc makers have the same write speed according to the labels , but actually have different write speed s , I t is necessary to downgrade the write speed to ensure stable writing.

### 2. Samsung' s Standards for Write Speed Restriction

**Standards 1** Write speed is downgraded for the sake of write stability , if high-speed discs available in the market have particularly bad properties data , or there are low-speed discs available under the same ID.

**Standards 2** Speed-restricted discs go through further examination and adjustments later. If high-speed discs are available under the same ID with as low-speed discs (speed restricted at present), the speed restriction is removed when the low-speed counterparts become no longer a una vailable in the market under the same ID.



You may experience lower write quality in case if you use disc products by some disc makers which that are not registered with the product's firmware. Therefore, it is recommended that you use only discs by recommended companies . Even , and even if the write session is completed successfully, check the write quality before you put the disc in storage , especially in case of an important data backup. (Samsung is not responsible for any loss resulting from data backup failure.)



We update the list of supported media on a regular basis through our firmware upgrades

# Specifications

Category		SH-W164C	
		External DVD±R/RW Drive	
<b>DISC</b>	Usable Discs	<b>DVD</b> : DVD-R, DVD-RW, DVD+R, DVD+RW, DVD-ROM, DVD-Video, DVD+R (Dual), DVD-R (Dual) <b>CD</b> : CD-ROM, CD-R, CD-RW, CD-DA, CD+E(G), CD-MIDI, CD-TEXT, CD-ROM XA, Mixed Mode CD, CD-I, CD-I Bridge (Photo-CD, Video-CD), Multisession CD (Photo-CD, CD-EXTRA, Portforio)	
	Disc Diameter	4.72 Inch or 3.15 Inch (120mm or 80mm)	
<b>Interface Support</b>	Interface Port	USB 2.0	
<b>ACCESS TIME (Random)</b>	CD-ROM	110ms (Random)	
	DVD-ROM	130ms (Random)	
<b>Data Transfer Speed (Max)</b>	<b>Media Type</b>	<b>Write</b>	<b>Read</b>
	DVD+R	PCAV 16X (21.6MB/sec)	CAV 12X (16.2MB/sec)
	DVD+RW	Z-CLV 8X (10.8MB/sec)	CAV 8X (10.8MB/sec)
	DVD+R DUAL	Z-CLV 5X (6.75MB/sec)	CAV 8X (10.8MB/sec)
	DVD-R DUAL	Z-CLV 4X (5.4MB/sec)	CAV 8X (10.8MB/sec)
	DVD-R	PCAV 16X (21.6MB/sec)	CAV 12X (16.2MB/sec)
	DVD-RW	Z-CLV 6X (8.1MB/sec)	CAV 8X (10.8MB/sec)
	DVD-ROM(Single)	-	CAV 16X (21.6MB/sec)
	DVD-ROM(Dual)	-	CAV 8X (10.8MB/sec)
	CD-ROM	-	CAV 48X (7.2MB/sec)
	CD-R	PCAV 48X (7.2MB/sec)	CAV 40X (6.0MB/sec)
	US-RW	PCAV 32X (4.8MB/sec)	CAV 40X (6.0MB/sec)
HS-RW	CLV 10X (1.5MB/sec)	CAV 40X (6.0MB/sec)	
CD-RW	CLV 4X (0.6MB/sec)	CAV 40X (6.0MB/sec)	
<b>Buffer Memory</b>	2MB		
<b>Drive Installation</b>	Horizontal / Vertical (cannot use 3.15 Inch(80mm) discs)		
<b>Operating Environment</b>	Temperature	41°F ~ 122°F (5°C ~ 45°C)	
	Humidity	10% ~ 80% (RH)	
<b>Size(Width x Height x Length)</b>	6.42 X 1.98 X 9.13 Inch (163 X 50 X 232mm)		
<b>Weight</b>	1,200g		
<b>MTBF</b>	125,000 POH(Duty 20%)		

## Note

- ▶ Does not support DVD-R for Authoring, DVD-RAM
- ▶ Cannot playback or record on both sides of a two-sided disc simultaneously.
- ▶ The read/write capacity of the supported discs depends on the condition of the disc and the recording format of the drive. Therefore, the read/write quality may not be perfect.

## Fcc information to the user

This equipment has been tested and found to comply with the limits for a class B digital device. pursuant to part 15 of the FCC rules.

These limits are designed to provide reasonable protection against harmful interference in a residential installation. this equipment generates.

Uses and can radiate radio frequency energy and. if not installed and used in accordance with the instructions. may cause harmful interference to radio communications However. there is no guarantee that interference will not occur in a particular installation.

If this equipment does cause harmful interference to radio or television reception.

Which can be determined by turning the equipment off and on. the user is encouraged to try to correct the interference by one or more of the following measures.

- ▶ Reorient or relocate the receiving antenna.
- ▶ Increase the separation between the equipment and receiver.
- ▶ Connect the equipment into an outlet on a circuit different from that to which the receiver is connected.
- ▶ Consult the dealer or experienced radio TV technician for help.

### CAUTION

Change or modifications not expressly approved by the manufacturer responsible for compliance could void the user's authority to operate the equipment.

# Specifications



**Laser Standard**

IEC 60825-1 : 1993 + A1 : 1997 + A2 : 2001



The product specifications above may be changed improve device performance without prior notice.