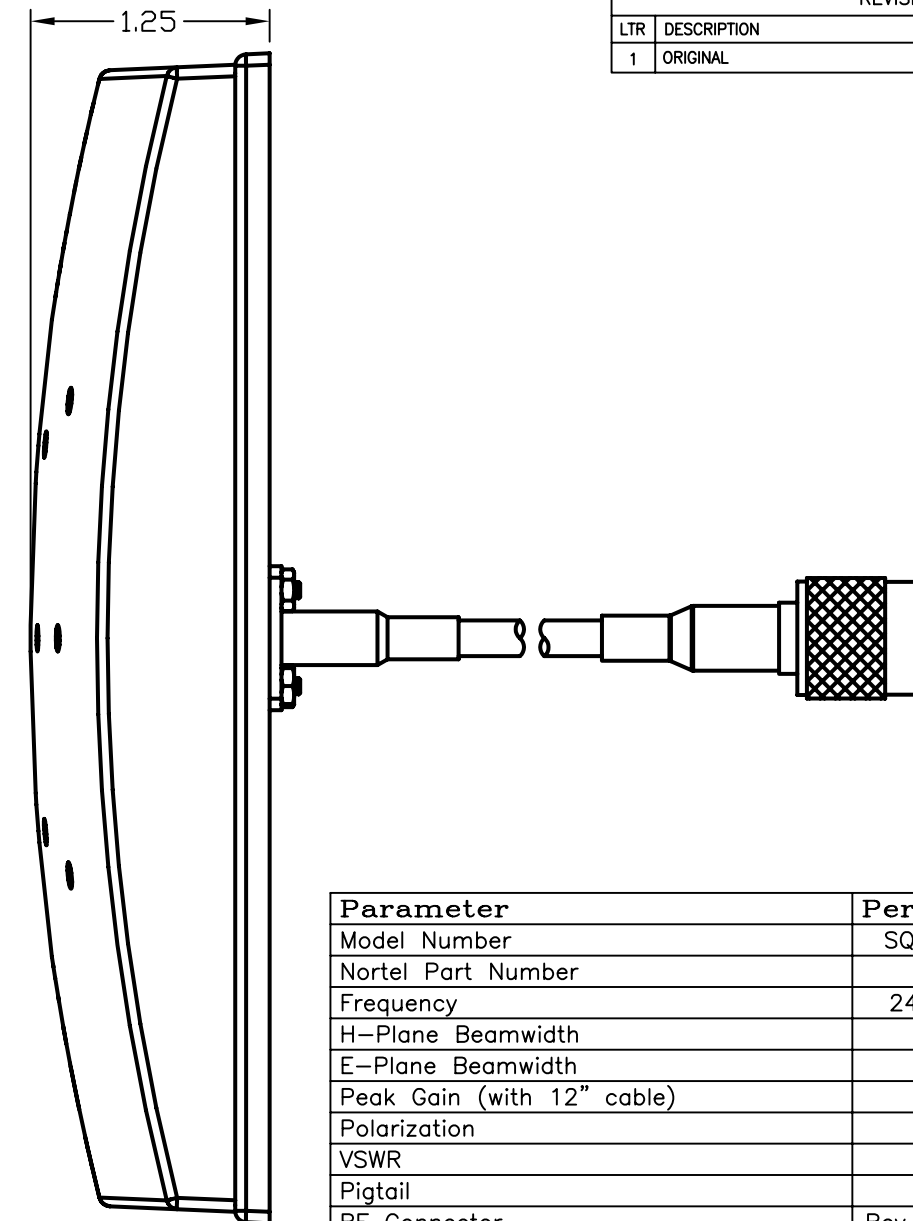
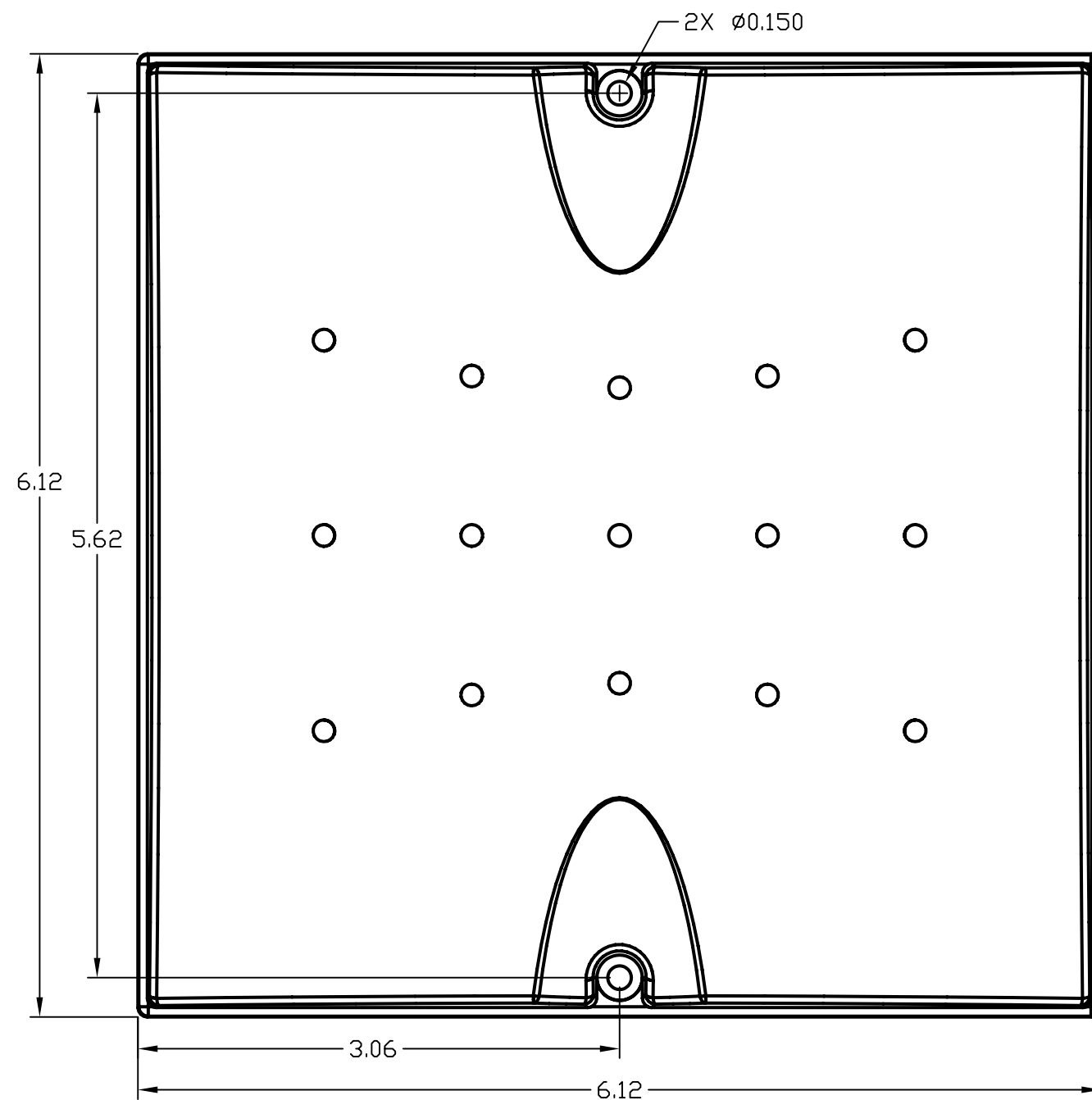


REVISION			
LTR	DESCRIPTION	DATE	INITIAL
1	ORIGINAL	6-21-04	SWJ



Parameter	Performance
Model Number	SQ2405DDN36RTN
Nortel Part Number	
Frequency	2400-2500 MHz
H-Plane Beamwidth	87°
E-Plane Beamwidth	58°
Peak Gain (with 12" cable)	4.5dBi
Polarization	Linear
VSWR	1.7:1
Pigtail	36"
RF Connector	Rev. Polarity TNC(M)
Power	10 Watts
Weight (W/12" cable)	0.6 lbs

MATERIAL:	DRAWN	DATE	CUSHCRAFT 48 PERIMETER ROAD MANCHESTER NH. 03108
	S JOHNSON	6-21-04	
DO NOT SCALE DRAWING	ENGINEER	DATE	TITLE: SQ2405DDN36RTNMO MOUNTING & OUTLINE
	ENGINEERING MGR	DATE	
UNLESS OTHERWISE SPECIFIED TOLERANCES ARE:	FINISH:		DRAWING NO. SQ2405DDN36RTNMO
	ANGLES ± 0.5° FRACTIONS ± 1/64" .XX ± 0.010" .XXX ± 0.005"		REV 1
CONFIDENTIAL		SCALE 1:1	SHEET 1 OF 1

CONFIDENTIAL
© 2004, Cushcraft Corporation. Information contained in this document is of a proprietary and/or legally privileged nature. It may not be reproduced without express written permission of Cushcraft Corporation, Manchester, NH.