

Thermal Bluetooth Printer

---Version 1.0.0.4

Introduction

Appreciate for purchasing our thermal receipt series printers. This manual is used on our mini portable thermal receipt series printers which include Models ZJ-58LYWD ZJ-58LYDD ZJ-58MNWD, and ZJ-58MNDD. The manual will guide you to know all the functions and operation solutions of our products.

All rights reserved. Reproduction of any part of this manual in any form whatsoever, without manufacturer's express permission is forbidden.

Declaration

We have been carefully handling the manual and trying our best to ensure the accuracy of the contents of this manual. But we still can't promise it is always correct due to our products are being improved and updated all the time. The contents of this manual will be updated without notice at any time.

All of our products must be used under environments/locations which are taken care by human being. We are not responsible for any loss or damages caused by any accident while the products are used without taken-care by human being. If there are any products failures caused by human behaviors or natural disaster, we will not provide or just provide partial free maintenance.

Please contact local agents for the latest information of the products.

TABLE OF CONTENTS

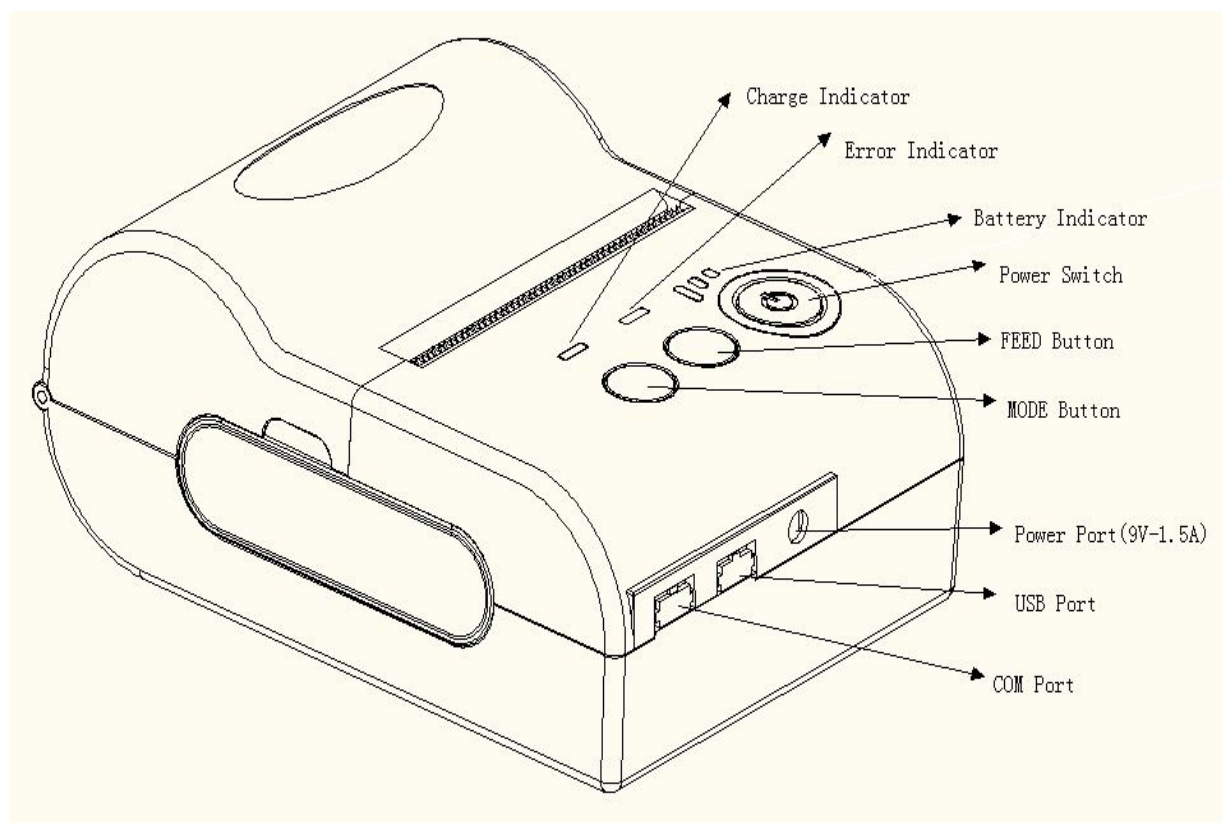
1. Description	4
1-1. Appearance	4
1-2. Specification & Features	4
1-3. Application area.....	5
1-4. Package and accessories	6
2. Communication Interface	7
2-1. RS-232 Serial Interface.....	7
2-2. Bluetooth Connection.....	8
2-2-1. Bluetooth specification	8
2-2-2. Use “AT” command to modify Printer’s parameters.....	8
2-2-3. Build connection	9
2-3. USB Interface.....	9
3. Basic Operation	10
3-1. Indicator light & Printer status	10
3-2. Operation	10
3-2-1. Switch on.....	10
3-2-2. Switch off.....	10
3-2-3. Paper feeding.....	10
3-2-4. Selftest.....	10
3-2-5. Hexadecimal printing.....	11
3-2-6. Set printing density.....	11
3-2-7. Set printer language.....	11
3-2-8. Set other parameters	11
3-3. Cleaning of printer.....	12
4. Installing Wizard	13
5. Operating Precautions	19
5-1. Notes on safety	19
5-2. Notes on using	19

5-3. Notes on handling	19
5-4. Others.....	20
6. Programmer Manual	21

1. Description

Mini Bluetooth Printer is a portable thermal printer that combines USB,RS-232 Serial and Bluetooth communication interface together, The printer could be powered by car charger, and rechargeable battery(depending on specified models) . These special characters make it successfully be applied to a variety of instruments, handheld data printing.

1-1. Appearance



[CHARGE]:Battery charge indicator

[ERROR]:Error indicator

[FEED]: FEED button

[MODE]:MODE button

1-2. Specification&Features

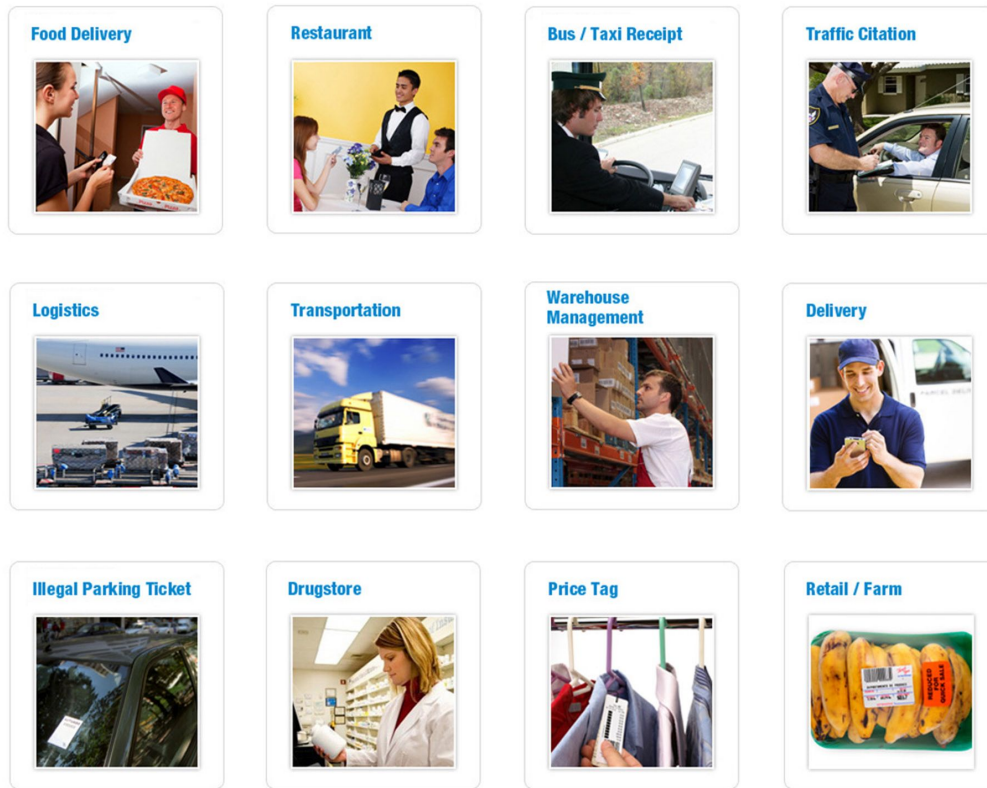
Item	Specification
Overall Dimension (W×D×H)	105×75×45mm

Weight	134g
Color	Dark gray
Effective print width	48mm
Print method	Thermal line printing
Print commands	ESC/POS compatible command set
Print speed	Up to 90mm/sec
Resolution	8 dots/mm(203dpi)
Print font	12x24/24x24
Column capacity	32 columns/16columns
Character size	1.5 x 3.0 mm(W x H)/ 3.0x3.0mm(WxH)
Paper dimensions	58.0±0.1mm x diameter 40.0mm
Paper thickness	0.06 to 0.08mm
Paper loading method	Drop-in easy loading
Character set	Alphanumeric/ Chinese Kanji
NV bit image/Logo	Download and printing supported
Interface	USB, RS-232,Bluetooth (optional)
Data buffer	Up to 10K bytes
Power Adapter	9V DC/1.5A
Battery Power	7.4V DC/1500mAh
Battery Duration	At least 120m continuous printing (under 25% printing density)
Battery Charging	Quick charging: About 3 hours to reach full charge
Other features	Paper detection, power detection, Manual shut down
Working conditions	Temperature:-10℃~50℃,Humidity:10%~90%
Storage conditions	Temperature:-20℃~70℃,Humidity:5%~95%

1-3. Application area

Compared to the traditional thermal receipt printer, Mini printer has smaller body, more reliable capability, more steady printing and portable advantages. The Mini printer can work on a lot of

locations, such as the TAXI bill printing, administrative fees receipt printing, post receipt printing, restaurant ordering information printing, online payment information printing, etc. With the rapid popularity of smart-mobile, Mini printer will be more widely used in the near future.



1-4. Package and accessories

- Portable Thermal printer
- Data cable
- Disk
- Power adapter
- Battery
- Thermal paper roll



Note: It will not be ensured that all the accessories listed above are always provided anytime. It depends on different models(different interfaces) and customer requirement.

2. Communication Interface

2-1. RS-232 Serial Interface

RS-232 is developed according to the EIA standard asynchronous transmission, the specifications are as following:

- Data transmission: serial interface
- Synchronization: asynchronous
- Signal Level: RS-232 level, logic 1:-5.4v, logic 0 : +5.4v
- Hardware Flow Control: None
- Baud rate: 2400pbs to 115200pbs is optional
- Data word length: 8 bits
- Stop bit: 1bit
- Parity: None

Users can get the current baud rate from the printer self-testing page.

Serial cable: We have made the cable specially using mini port like Mini USB port which connects the printer .The following picture shows the signal definition of the RS-232 Serial interface:

The connection between the printer and host follows the following rules:

Printer	Host
TXD	RXD
RXD	TXD
GND	GND

However, the printer usually works only on receiving data, it doesn't have to respond anything back to the host , then TXD signal can be ignored , and then the connection can be sampled as following:

Printer	Host
RXD	TXD
GND	GND

2-2. Bluetooth Connection

Bluetooth is a proprietary open wireless technology standard for exchanging data over short distances (using short-wavelength radio transmissions in the ISM band from 2400–2480 MHz) from fixed and mobile devices, creating personal area networks (PANs) with high levels of security.

2-2-1. Bluetooth specification

Using blueCore4-Ext chipset, fully compatible with Bluetooth 2.0;

High-sensitivity receive signal, small size, lower consumption

Supporting 1200bps ~ 1382400bps variety of baud rate;

Supporting SPP agreement, the maximum transfer speed is up to 3Mbit / s;

2-2-2. Use “AT” command to modify Bluetooth Module’s parameters

Notice: The following changes can’t be done by user, these should be done in factory by Manufacturer. So if user wants to change these parameters, please inform our sales person before ordering our printers.

Modify name---Send character string “AT+NAMEXXXX, feedback “Okname”;

For example, if you want change name to “LY58”, please send string “AT+NAMELY58”.

Modify PIN code--- Send character string “AT+PINXXXX, feedback “Oksetpin”;

For example, if you want change PIN code to “8888”, please send string”AT+PIN8888”.

(**Note:** Default PIN code is “1234”, you only can reset PIN code with four figures.)

Clear Bluetooth address--- Send character string “AT+CLR00”, feedback “Okclear”;

Modify baud rate--- Send character string “AT+BAUDX, feedback “Ok+current baud rate”;

X represents the baud rate code, as following:

1-----1200	7-----57600
2-----2400	8-----115200
3-----4800	9-----230400
4-----9600	A-----460800
5-----19200	B-----921600
6-----38400	C-----1382400

For example, if you want to change baud rate to 115200bps, please send string “AT+BAUD8”.

2-2-3. Build connection.

1. Turn on the printer;

2. Search for the Bluetooth device with host device;
3. If there are other Bluetooth devices, please select "LY58"(for example) printer;
4. Enter default pairing code "1234"
5. Pairing succeed.

2-3. USB Interface

The printer is connected by standard Mini USB cable(included in accessories) for communication.
The USB type belongs to slave device type.

3. Basic Operation

3-1. indicator light & printer status

There are Three indicators, they are red and blue **【CHARGE】** light, red **【ERROR】** light, and blue **【BATTERY】** indicator. The meanings of each indicators are as below:

【CHARGE】 indicator

Blue light constant on: charging is completed;

Red light constant on: in charging;

Blue and red lights on: mistakes occur, please check whether the battery is good contact or not, and the temperature is normal or not.

【ERROR】 indicator

Constant on slow flashing: printer out of paper

Constant on quick flashing: printer has mistakes.

【BATTERY】 indicator

The battery indicators are composed by three parts in order to show the battery status.

Three parts light on: battery is high.

Two parts light on: battery is medium.

One part light on: battery is low.

Minimum part light flashing: battery is extremely low, it must be charged at once.

Three parts light flashing at the same time: power supply should be over voltage (external power supply without battery) .

3-2. Operation

3-2-1. Switch On

Press **【POWER】** button for about 2 seconds, the battery indicator is on.

When the printer is powered by battery, battery indicator shows power of the battery. When the printer is powered by external power supply without battery, the battery indicators are all flashing at the same time.

3-2-2. Switch Off

Under status of switch on, pressed the **【POWER】** button for 2 seconds, the battery indicator goes out, then loosen the **【POWER】** button, the printer is off.

3-2-3. Paper Feeding

Under the normal working status, the paper feeding begins when press **【FEED】** button, and stop when loosen **【FEED】** button.

3-2-4. Selftest

User can check the printer's current setting at anytime by printing Selftest page.

Selftest printing method: Power off the printer, then hold down the **【FEED】** button and press the power button at the same time. Wait until the battery indicator & **【ERROR】** led is on ,then loosen the **【FEED】** button,the current setting will be printed out.

3-2-5. Hexadecimal printing

The function of hexadecimal printing is to print the information received from host machine by hexadecimal form. It is convenient for application debugging.

Way Into hexadecimal printing: Power off the printer, hold down the**【MODE】**button and press the power button at the same time. Wait until the battery indicator & **【ERROR】** led are both on, and then **【ERROR】** led goes out, then loosen the **【MODE】** button. The printer turns into the hexadecimal printing mode and print the presentation.

Way to quit hexadecimal printing : The way to quit hexadecimal printing mode is switch off the printer .

3-2-6. Set printing density

Power off the printer, then hold down the **【FEED】** button and press the power button at the same time. Wait until the battery indicator &**【ERROR】**led are both on, and then **【ERROR】**led goes out, after, **【ERROR】** led goes on again ,then loosen the **【FEED】** button, the density setting status will be printed out. (It has three levels setting for printing density, it is a circle Low level→Middle level→High level→Low level..., Please switch the density status by repeating operation presented above.)

3-2-7. Set printer language

Power off the printer, then hold down the **【FEED】** button and press the power button at the same time. Wait until the battery indicator &**【ERROR】**led are both on, and then **【ERROR】**led goes off, then loosen the **【FEED】** button, the language setting status will be printed out.(It has Two languages setting for the printer, please switch the language status by repeating operation presented above.)

3-2-8. Set other parameters

User can set more parameters for the printer by using software tool <iprinter.exe> through computer. You could find <iprinter.exe> in our disk or download it from our website. The setting includes: set default code page, set default baud rate (only for serial interface), download NV logo.

3-3. Cleaning of printer

When the printer has the following conditions, you should clean the printer head:


- The printer does not print clearly and the thermal paper is Ok.
- It's getting too noisy while feeding paper or printing.

Printer cleaning steps are as follows:

1. Power off the printer and open the paper room cover. Remove the thermal paper roll.
2. If the printer just finished printing , please wait for the print head to cool down.
3. With a soft cotton cloth dipped in ethanol (please make sure there is no dripping), wipe the thermal printer head gently and remove any dust or stains.
4. Wait for the complete evaporation of any ethanol, then place the thermal paper roll back in the printer and close the paper room cover, then print a test page.


4. Installing Wizard

Installing Wizard (Only for Bluetooth Interface)

Step1: Make sure your device (like PC, Note Book) has Bluetooth function, then once the Bluetooth for your device is activated, you will see the Bluetooth sign  showed in the right bottom side of your device(like PC) screen.

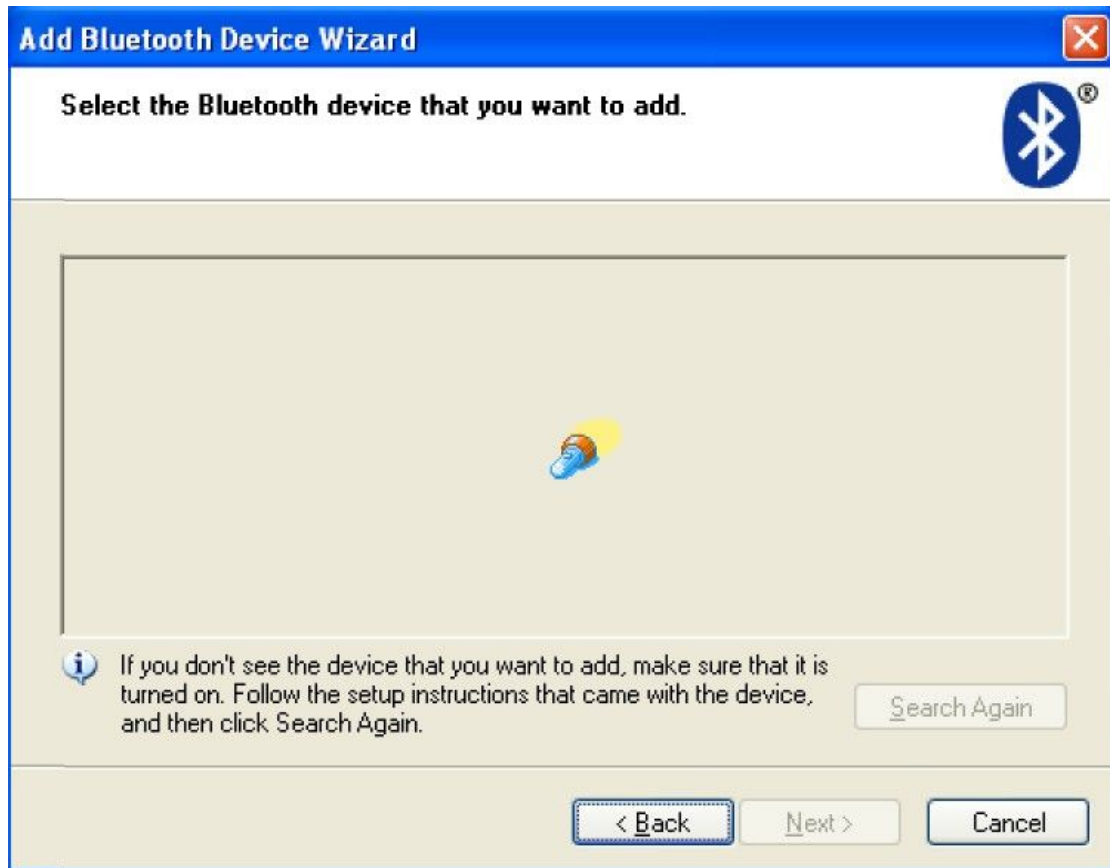


Step2:Power on the Bluetooth printer.

Step3:To add the Bluetooth printer, please left-click the  →click “**Add a Bluetooth Device**” ,then you will enter wizard screen , please choose “**My device is set up according and ready to be found**” →click “**Next**” (showed as below).



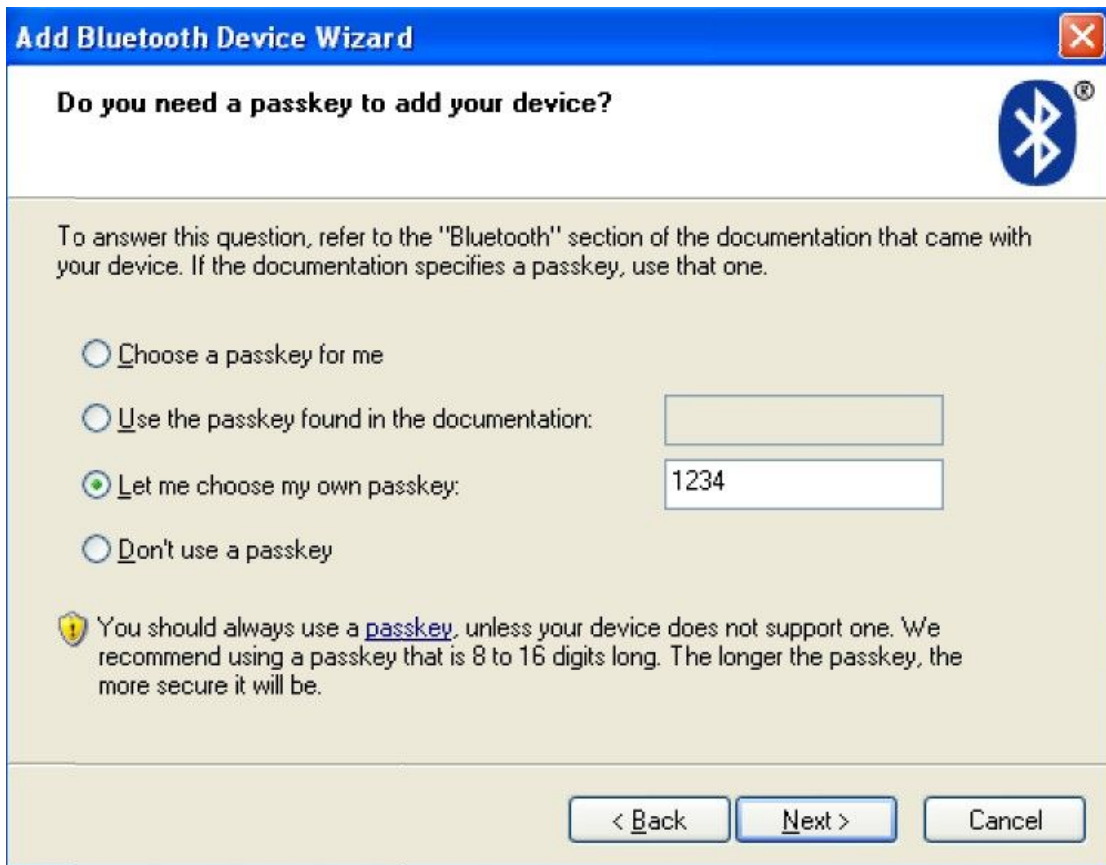
Step4:if you can see screen as below,then the device is searching the bluetooth printer,please wait.



Step5: Once the Bluetooth printer is found. You can see it listed on the screen, Here, for example, LY58 bluetooth printer is successfully found. Please click “-LY58”, → click “Next”



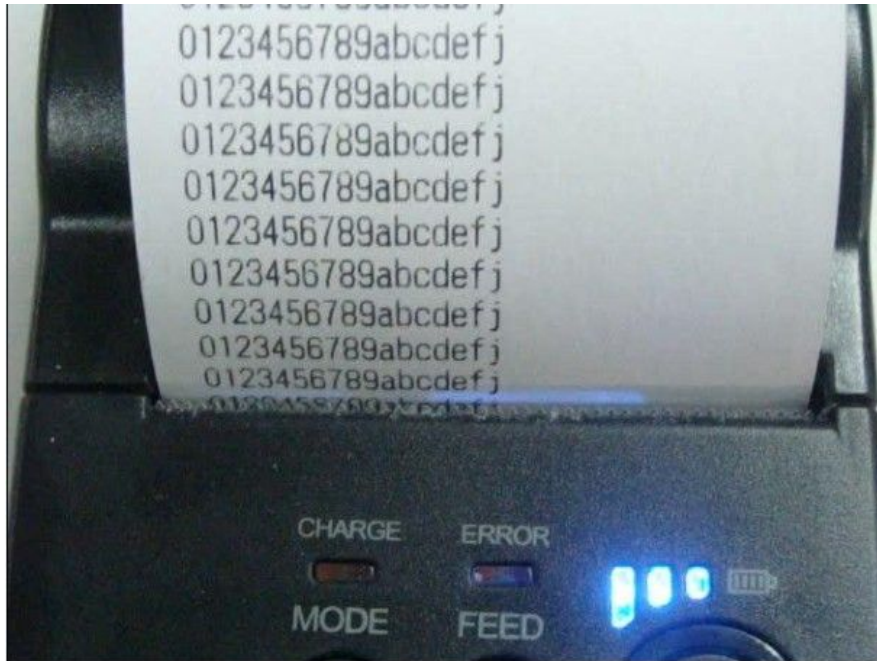
Step6: Choose “Let me choose my own passkey”, then enter “1234”(this is factory default passkey, if you want to change it, you have to inform us to set the new passkey for you in our factory before shipping), then click “Next”.



Step7:if you can see the screen as below, that means the Bluetooth printer is already connected. Please notice the assigned COM ports ,then Click"**Finish**".



Step8: Now if you want to test if the printer is OK to print, you could use a com tool , and send printed data to **Outgoing COM port**(here, it is **COM5**). (Com tool setting is 9600,N,8,1.)



Done.

5. Operating Precautions

This section presents important information intended to ensure safety and effective use of the printer. Please read carefully.

5-1. Notes on safety

Be sure to use the specified battery and power source provided by our company. Connection to an improper power source may cause fire, explosion or damage to the printer.

Don't put the battery into the fire or water, don't disassemble or modify the battery, don't be short circuit, otherwise may result in injury or fire even explosion.

If the printer would not be used for a long time, be sure to take off the battery, otherwise the battery may leak the corrosive liquid out, if improper operation causes battery leak, and the liquid is spattered on the skin or clothes, please wash it with water immediately, if spattered in the eyes, please rinse them with water thoroughly and see a doctor.

Please don't open the paper room cover when it is printing or just when printing is over, do not touch the print head with hand or body, overheat may cause scald.

5-2. Notes on using

Be sure not to print continuously over 1 meter, otherwise may cause damage to the print head. Water or other liquid should not spill into the printer, also the printer should not be appeared in the rain, or else may cause printer damage.

If print with serial interface, should not unplug the interface cable in the course of printing, or else some printing data may be lost. When print in Bluetooth mode, the distance should be within the range of 10 meters, otherwise the printer doesn't print or prints rubbish codes.

Too high (45°C) or too low (5°C) temperature and too high (85%) or too low (20%) relative humidity both effect the print quality.

The print paper in poor quality or stored for too long time also may reduce the print quality even damage the printer.

Be sure to use up the electricity of the battery before charging it, as it can ensure the using life of the battery.

5-3. Notes on handling

The printer should be stored in such an temperature environment between -10°C and 60°C, and the relative humidity is between 5% and 95%.

If the printer will be stored for a long time, please take the battery out, otherwise may damage the battery and printer. <Note> The lithium battery have a character that if it is not used for several months, it possibly can't be charged ever.

Normal thermal paper can't be kept too long, if you want to keep the receipt for a long period, please choose long term effective thermal paper.

5-4. Others

- The printer is to be installed on a flat dry surface.
- Do not store the printer in hot and humid conditions.
- The printer's power adapter is to be connected to a stable power 110~220Volts, please do not use other devices on the same power socket, to avoid voltage fluctuations.
- Avoid water or conductive material (for example: metal). If water is present on the surface please turn off the power immediately.
- Please ensure that a thermal paper roll is always inserted in the printer to avoid damaging the printing roller and the printer head.
- If you do not intend to use the printer for a long time, please take off the battery..
- Please ensure that your printer is serviced and repaired by a qualified technician. No responsibility is taken for misuse and/or non-qualified servicing.
- The power adapter that comes with this printer is specifically designed to be only used with the printer, please do not use an alternative power adapter.
- In order to ensure print quality and longevity of your printer, please ensure that only good quality thermal paper rolls are used.
- Please make sure the printer power is turned off before plugging in the power cord or the data cable,.
- Please keep this manual in a safe place, where it can be accessed easily and used for your reference.

6. Programmer Manual

6-1. COMMANDS

6-1-1. Command Notation

- [Name] The name of the command.
- [Format] The code sequence.
- [Range] Gives the allowable ranges for the arguments.
- [Description] Describes the command's function.
- [Details] Describes the usage of the command in detail.
- [Notes] Provides important information on setting and using the printer command, if necessary.
- [Default] Gives the default values, if any, for the command parameters.
- [Reference] Lists related commands.
- [Example] Gives examples of how to use the command.

Hex indicates the hexadecimal equivalents.

Decimal indicates the decimal equivalents.

[]*k* indicates the contents of the [] should be repeated *k* times.

6-1-2. Explanation of Terms

(1) Receive buffer

The receive buffer is a buffer that stores, as is, the data received from the host (the reception data). The reception data is stored in the receive buffer temporarily, and is then processed sequentially.

(2) Print buffer

The print buffer is a buffer that stores the image data to be printed.

(3) Print buffer full

This is the state where the print buffer is full. If new print data is input while the print buffer is full, the data in the print buffer is printed out and a line feed is executed. This is the same operation as the LF operation.

(4) Start of line

The start of line state satisfies the following condition:

- There is no print data (including spaces and portions of data skipped due to bit image data) currently in the print buffer.

- There is no print data (including portions of data skipped due to HT)

- The print position is not specified by the ESC \$ or ESC \ command.

(5) Printable area

The maximum range within which printing is possible under the printer specifications. The printable area for this printer is as follows:

① The length of the horizontal direction in standard mode:
approximately 72.1 mm {576/203"}

② The length of the horizontal direction in page mode:

approximately 72.1 mm {576/203"}

③The length of the vertical direction in page mode: approximately 117.3 mm {1662/360"}

(6) Printing area

Printing range is set by the command. It must be printing area ≤ printable area.

(7) Ignore

The state in which all codes, including parameters, are read in and discarded, and nothing happens.

(8) Inch

A unit of length. One inch is 25.4 mm.

(9) MSB

Most Significant Bit

(10) LSB

Least Significant Bit

(11) Base line

Standard position when character data is stored in the print buffer.

Normal character in standard mode and page mode:

6-2. Control Commands

HT

[Name] Horizontal tab

[Format] ASCII HT

Hex 09

Decimal 9

[Description] Moves the print position to the next horizontal tab position.

[Details]

- This command is ignored unless the next horizontal tab position has been set.
- If the next horizontal tab position exceeds the printing area, the printer sets the printing position to [Printing area width + 1].
- Horizontal tab positions are set with **ESC D**.
- If this command is received when the printing position is at [printing area width + 1], the printer executes print buffer-full printing of the current line and horizontal tab processing from the beginning of the next line.
- The default setting of the horizontal tab position for the paper roll is font A (12 × 24) every 8th character (9th, 17th, 25th, ... column).

[Reference] **ESC D**

LF

[Name] Print and line feed

[Format] ASCII LF

Hex 0A

Decimal 10

[Description] Prints the data in the print buffer and feeds one line based on the current line spacing.

[Note] This command sets the print position to the beginning of the line.

[Reference] **ESC 2, ESC 3**

FF (*)

[Name]	Print and return to standard mode in page mode
[Format]	ASCII FF Hex 0C Decimal 12
[Description]	Prints the data in the print buffer collectively and returns to standard mode.
[Details]	<ul style="list-style-type: none"> • The buffer data is deleted after being printed. • The printing area set by ESC W is reset to the default setting. • The printer does not execute paper cutting. • This command sets the print position to the beginning of the line. • This command is enabled only in page mode.
[Reference]	ESC FF, ESC L, ESC S

CR

[Name]	Print and carriage return
[Format]	ASCII CR Hex 0D Decimal 13
[Description]	When automatic line feed is enabled, this command functions the same as LF ; when automatic line feed is disabled, this command is ignored.
[Details]	<ul style="list-style-type: none"> • Sets the print starting position to the beginning of the line. • The automatic line feed is ignored with a serial interface model. • This command is set according to the DIP switch 1-1 setting with a parallel interface model.
[Reference]	LF

CAN (*)

[Name]	Cancel print data in page mode
[Format]	ASCII CAN Hex 18 Decimal 24
[Description]	In page mode, deletes all the print data in the current printable area.
[Details]	<ul style="list-style-type: none"> • This command is enabled only in page mode. • If data that existed in the previously specified printing area also exists in the currently specified printing area, it is deleted.
[Reference]	ESC L, ESC W

DLE EOT n (*)

[Name]	Real-time status transmission
[Format]	ASCII DLE EOT n Hex 10 04 n Decimal 16 4 n
[Range]	$1 \leq n \leq 4$
[Description]	Transmits the selected printer status specified by n in real-time, according to the following parameters: n = 1: Transmit printer status n = 2: Transmit off-line status

n = 3: Transmit error status

n = 4: Transmit paper roll sensor status

[Details]

- The status is transmitted whenever the data sequence of <10>H<04>H< n> ($1 \leq n \leq 4$) is received.

Example:

In **ESC * m nL nH d1...dk**, d1=<10>H, d2=<04>H, d3=<01>H

- This command should not be used within the data sequence of another command that consists of 2 or more bytes.

Example:

If you attempt to transmit **ESC 3 n** to the printer, but DTR (DSR for the host computer) goes to MARK before n is transmitted and then **DLE EOT 3** interrupts before n is received, the code <10>H for **DLE EOT 3** is processed as the code for **ESC 3 <10>H**.

- Even though the printer is not selected using **ESC =** (select peripheral device), this command is effective.
- The printer transmits the current status. Each status is represented by onebyte data.
- The printer transmits the status without confirming whether the host computer can receive data.
- The printer executes this command upon receiving it.
- This command is executed even when the printer is off-line, the receive buffer is full, or there is an error status with a serial interface model.
- With a parallel interface model, this command can not be executed when the printer is busy. This command is executed even when the printer is off-line or there is an error status when DIP switch 2-1 is on with a parallel interface model.
- When Auto Status Back (ASB) is enabled using the **GS a** command, the status transmitted by the **DLE EOT** command and the ASB status must be differentiated.

n = 1: Printer status

Bit	Off/On	Hex	Decimal	Function
0	0	00	0	Not used.Fixed to Off.
1	1	02	2	Not used.Fixed to On.
2	0	00	0	Drawer open/close signal is LOW(connector pin3)
	1	04	4	Drawer open/close signal is LOW(connector pin3)
3	0	00	0	On-line
	1	08	8	Off-line
4	1	10	16	Not used.Fixed to On.
5, 6				Undefined.
7	0	00	00	Not used.Fixed to Off.

n = 2: Off-line status

Bit	Off/On	Hex	Decimal	Function
0	0	00	0	Not used. Fixed to Off.
1	1	02	2	Not used. Fixed to On.
2	0	00	0	Cover is closed.
	1	04	4	Cover is open.
3	0	00	0	Paper is not being fed by using the FEED button.
	1	08	8	Paper is being fed by the FEED button.
4	1	10	16	Not used. Fixed to On.
5	0	00	0	No paper-end stop.
	1	20	32	Printing is being stopped.
6	0	00	0	No error.
	1	40	64	Error occurs.
7	0	00	0	Not used. Fixed to Off.

n = 3: Error status

Bit	Off/On	Hex	Decimal	Function
0	0	00	0	Not used. Fixed to Off.
1	1	02	2	Not used. Fixed to On.
2	-	-	-	Undefined.
3	0	00	0	No auto-cutter error.
	1	08	8	Auto-cutter error occurs.
4	1	10	16	Not used. Fixed to On.
5	0	00	0	No unrecoverable error.
	1	20	32	Unrecoverable error occurs.
6	0	00	0	No auto-recoverable error.
	1	40	64	Auto recoverable error occurs.
7	0	00	0	Not used. Fixed to Off.

n = 4: Continuous paper sensor status

Bit	Off/On	Hex	Decimal	Function
0	0	00	0	Not used. Fixed to Off.
1	1	02	2	Not used. Fixed to On.
2, 3	0	00	0	Paper roll near-end sensor: paper adequate.
	1	0C	12	Paper near-end is detected by the paper roll near-end sensor.
4	1	10	16	Not used. Fixed to On.
5, 6	0	00	0	Paper roll sensor: Paper present.
	1	60	96	Paper roll end detected by paper roll senso.
7	0	00	0	Not used. Fixed to Off.

[Reference] DLE ENQ, GS a, GS r

DLE ENQ n (*)

[Name] Real-time request to printer

[Format] ASCII DLE ENQ n
Hex 10 05 n
Decimal 16 5 n

[Range] $1 \leq n \leq 2$

[Description] Responds to a request from the host computer. n specifies the requests as follows:

n	Request
1	Recover from an error and restart printing from the line where the error occurred
2	Recover from an error aft clearing the receive and print buffers

- [Details]
- This command is effective only when an auto-cutter error occurs.
 - The printer starts processing data upon receiving this command.
 - This command is executed even when the printer is off-line, the receive buffer is full, or there is an error status with a serial interface model.
 - With a parallel interface model, this command can not be executed when the printer is busy. This command is executed even when the printer is off-line or there is an error status when DIP switch 2-1 is on with a parallel interface model.
 - The status is also transmitted whenever the data sequence of $\langle 10 \rangle H \langle 05 \rangle H \langle n \rangle$ ($1 \leq n \leq 2$) is received.
Example:
In **ESC * m nL nH dk**, d1 = $\langle 10 \rangle H$, d2 = $\langle 05 \rangle H$, d3 = $\langle 01 \rangle H$
 - This command should not be contained within another command that consists of two or more bytes.
Example:
If you attempt to transmit **ESC 3 n** to the printer, but DTR (DSR for the host computer) goes to MARK before n is transmitted, and **DLE ENQ 2** interrupts before n is received, the code $\langle 10 \rangle H$ for **DLE ENQ 2** is processed as the code for **ESC 3** $\langle 10 \rangle H$.
 - **DLE ENQ 2** enables the printer to recover from an error after clearing the data in the receive buffer and the print buffer. The printer retains the settings (by **ESC !**, **ESC 3**, etc.) that were in effect when the error occurred. The printer can be initialized completely by using this command and **ESC @**. This command is enabled only for errors that have the possibility of recovery, except for print head temperature error.
 - When the printer is disabled with **ESC =** (Select peripheral device), the error recovery functions (**DLE ENQ 1** and **DLE ENQ 2**) are enabled, and the other functions are disabled.

[Reference] DLE EOT

DLE DC4 n m t (*)

[Name] Generate pulse at real-time

[Format] ASCII DLE DC4 n m t
 Hex 10 14 n m t
 Decimal 16 20 n m t

[Range] n = 1
 m = 0, 1
 1 ≤ t ≤ 8

[Description] Outputs the pulse specified by t to connector pin m as follows:

m	Connector pin
0	Drawer kick-out connector pin 2.
1	Drawer kick-out connector pin 5.

The pulse ON time is [t × 100 ms] and the OFF time is [t × 100ms].

- [Details]
- When the printer is in an error status when this command is processed, this command is ignored.
 - When the pulse is output to the connector pin specified while **ESC p** or **DEL DC4** is executed while this command is processed, this command is ignored.
 - The printer executes this command upon receiving it.
 - With a serial interface model, this command is executed even when the printer is off-line, the receive buffer is full, or there is an error status.
 - With a parallel interface model, this command cannot be executed when the printer is busy. This command is executed even when the printer is off-line or there is an error status when DIP switch 2-1 is on.
 - If print data includes the same character strings as this command, the printer performs the same operation specified by this command. The user must consider this.
 - This command should not be used within the data sequence of another command that consists of 2 or more bytes.
 - This command is effective even when the printer is disabled with **ESC =** (Select peripheral device).

[Reference] **ESC p**

ESC FF (*)

[Name] Print data in page mode

[Format] ASCII ESC FF
 Hex 1B 0C
 Decimal 27 12

[Description] In page mode, prints all buffered data in the printing area collectively.

- [Details]
- This command is enabled only in page mode.
 - After printing, the printer does not clear the buffered data, setting values for **ESC T** and **ESC W**, and the position for buffering character data.

[Reference] **FF, ESC L, ESC S**

ESC SP n

[Name] Set right-side character spacing

[Format] ASCII ESC SP n

Hex 1B 20 *n*
 Decimal 27 32 *n*

[Range] $0 \leq n \leq 255$

[Description] Sets the character spacing for the right side of the character to [*n* . horizontal or vertical motion units].

- [Details]
- The right-side character spacing for double-width mode is twice the normal value. When characters are enlarged, the right-side character spacing is *n* times normal value.
 - This command does not affect the setting of kanji characters.
 - This command sets values independently in each mode (standard and page modes).
 - The horizontal and vertical motion unit are specified by **GS P**. Changing the horizontal or vertical motion unit does not affect the current right-side spacing.
 - The **GS P** command can change the horizontal (and vertical) motion unit. However, the value cannot be less than the minimum horizontal movement amount, and it must be in even units of the minimum horizontal movement amount.
 - In standard mode, the horizontal motion unit is used.
 - In page mode, the horizontal or vertical motion unit differs in page mode, depending on starting position of the printable area as follows:
 - 1 When the starting position is set to the upper left or lower right of the printable area using **ESC T**, the horizontal motion unit (*x*) is used.
 - 2 When the starting position is set to the upper right or lower left of the printable area using **ESC T**, the vertical motion unit (*y*) is used.
 - The maximum right-side spacing is 255/180 inches. Any setting exceeding the maximum is converted to the maximum automatically.

[Default] $n = 0$

[Reference] **GS P**

ESC ! *n*

[Name] Select print mode(s)

[Format] ASCII ESC ! *n*
 Hex 1B 21 *n*
 Decimal 27 33 *n*

[Range] $0 \leq n \leq 255$

[Description] Selects print mode(s) using *n* as follows:

Bit	Off/On	Hex	Decimal	Function
0	Off	00	0	Character font A (12 × 24).
	On	01	1	Character font B (9 × 17).
1	-	-	-	Undefined.
2	-	-	-	Undefined.
3	Off	00	0	Emphasized mode not selected.
	On	08	8	Emphasized mode selected.
4	Off	00	0	Double-height mode not selected.
	On	10	16	Double-height mode selected.
5	Off	00	0	Double-width mode not selected.
	On	20	32	Double-width mode selected.
6	-	-	-	Undefined.
7	Off	00	0	Underline mode not selected.

	On	80	128	Underline mode selected.
--	----	----	-----	--------------------------

- [Details]
- When both double-height and double-width modes are selected, quadruple size characters are printed.
 - The printer can underline all characters, but can not underline the space set by **HT** or 90° clockwise rotated characters.
 - The thickness of the underline is that selected by **ESC ~**, regardless of the character size.
 - When some characters in a line are double or more height, all the characters on the line are aligned at the baseline.
 - **ESC E** can also turn on or off emphasized mode. However, the setting of the last received command is effective.
 - **ESC _** can also turn on or off underline mode. However, the setting of the last received command is effective.
 - **GS !** can also select character size. However, the setting of the last received command is effective.
 - Emphasized mode is effective for alphanumeric and Kanji. All print modes except emphasized mode is effective only for alphanumeric.

[Default] $n = 0$

[Reference] **ESC -, ESC E, GS !**

ESC \$ nL nH

[Name] Set absolute print position

[Format]	ASCII	ESC	\$	<i>nL</i>	<i>nH</i>
	Hex	1B	24	<i>nL</i>	<i>nH</i>
	Decimal	27	36	<i>nL</i>	<i>nH</i>

[Range] $0 \leq nL \leq 255$

$0 \leq nH \leq 255$

[Description] Sets the distance from the beginning of the line to the position at which subsequent characters are to be printed.

- The distance from the beginning of the line to the print position is $[(nL + nH \times 256) \times (\text{vertical or horizontal motion unit})]$ inches.
- Settings outside the specified printable area are ignored.
- The horizontal and vertical motion unit are specified by **GS P**.
- The **GS P** command can change the horizontal (and vertical) motion unit. However, the value cannot be less than the minimum horizontal movement amount, and it must be in even units of the minimum horizontal movement amount.
- In standard mode, the horizontal motion unit (x) is used.
- In page mode, horizontal or vertical motion unit differs depending on the starting position of the printable area as follows:
 - 1 When the starting position is set to the upper left or lower right of the printable area using **ESC T**, the horizontal motion unit (x) is used.
 - 2 When the starting position is set to the upper right or lower left of the printable area using **ESC T**, the vertical motion unit (y) is used.

[Reference] **ESC \, GS \$, GS \, GS P**

ESC % n

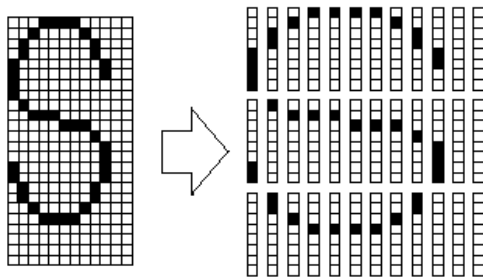
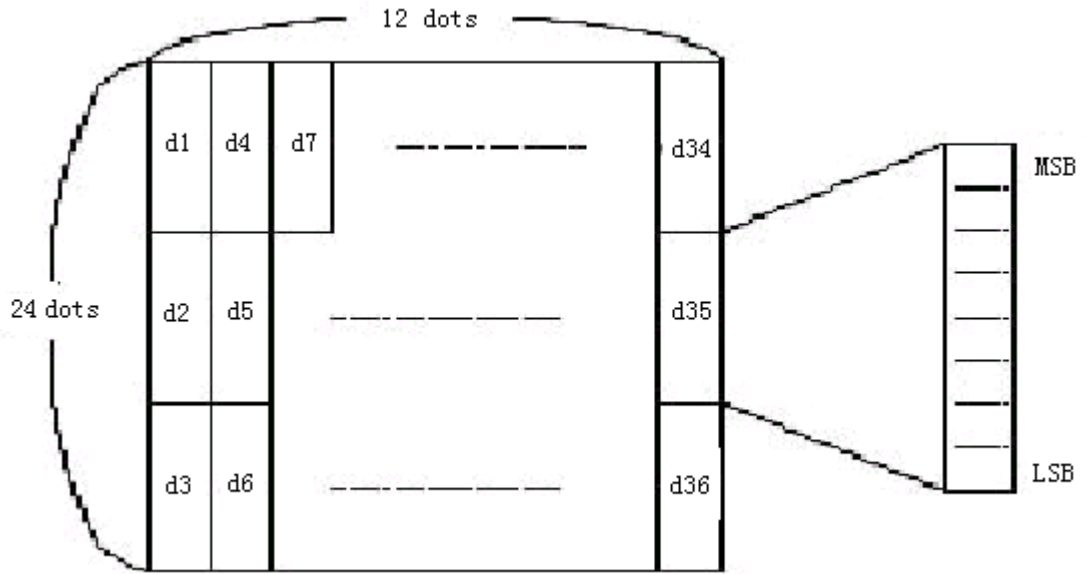
[Name] Select/cancel user-defined character set

[Format]	ASCII	ESC	%	<i>n</i>
	Hex	1B	25	<i>n</i>
	Decimal	27	37	<i>n</i>

[Range]	$0 \leq nL \leq 255$
[Description]	Selects or cancels the user-defined character set. <ul style="list-style-type: none"> • When the LSB of n is 0, the user-defined character set is canceled. • When the LSB of n is 1, the user-defined character set is selected.
[Details]	<ul style="list-style-type: none"> • When the user-defined character set is canceled, the internal character set is automatically selected. • n is available only for the least significant bit.
[Default]	$n = 0$
[Reference]	ESC &, ESC ?

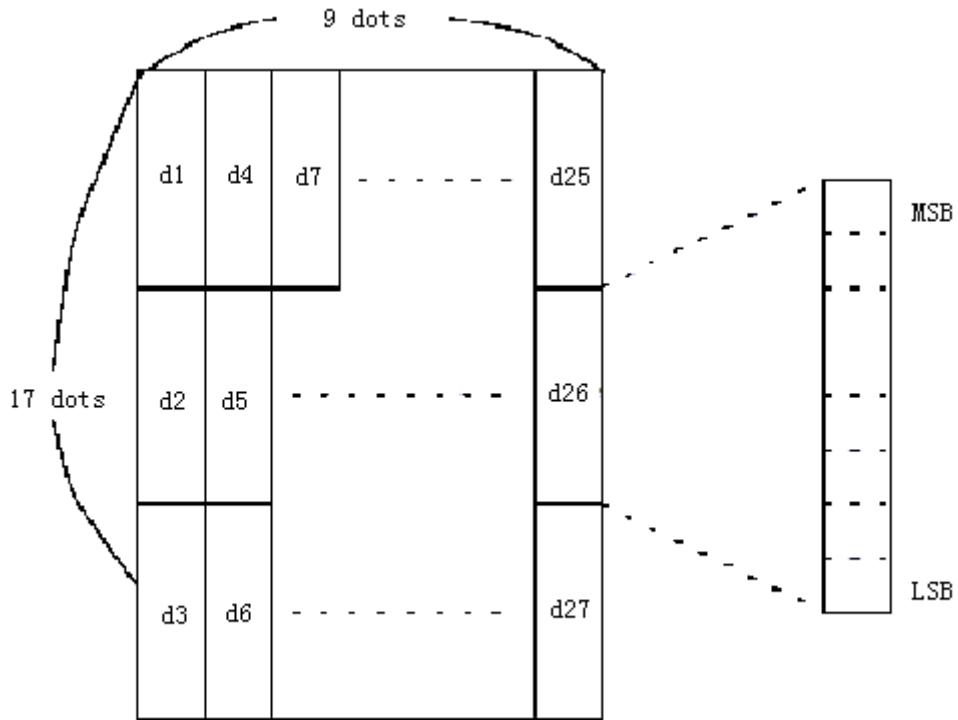
ESC & y c1 c2 [x1 d1...d(y × x1)]...[xk d1...d(y × xk)]

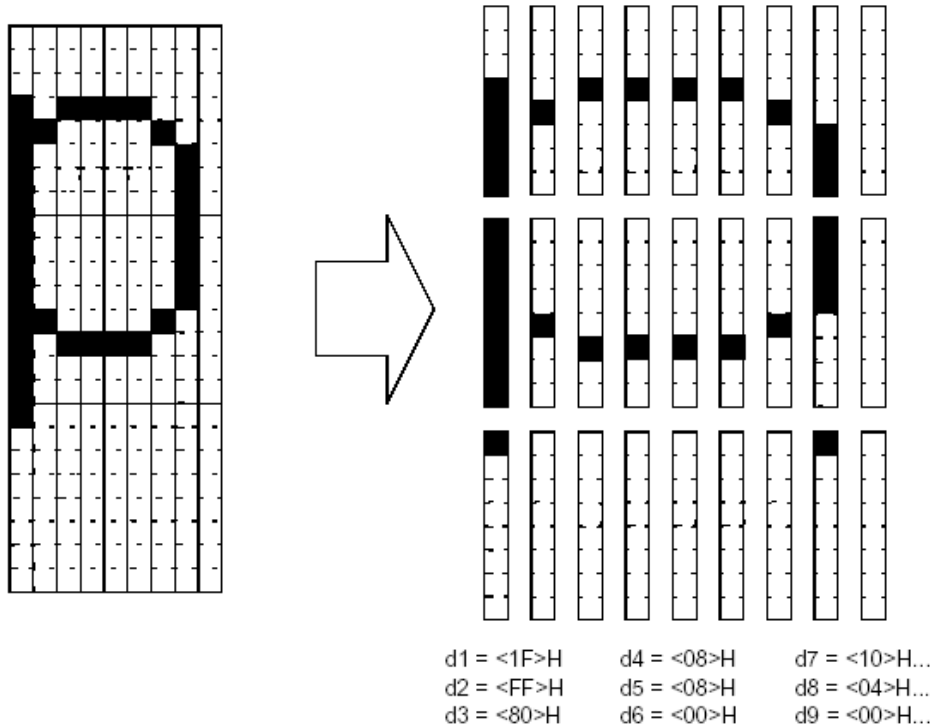
[Name]	Define user-defined characters																		
[Format]	<table> <tr> <td>ASCII</td> <td>ESC &</td> <td>y</td> <td>$c1$</td> <td>$c2$</td> <td>$[\times 1 d1...d(y \times x1)]...[xk d1...d(y \times xk)]$</td> </tr> <tr> <td>Hex</td> <td>1B 26</td> <td>y</td> <td>$c1$</td> <td>$c2$</td> <td>$[\times 1 d1...d(y \times x1)]...[xk d1...d(y \times xk)]$</td> </tr> <tr> <td>Decimal</td> <td>27 38</td> <td>y</td> <td>$c1$</td> <td>$c2$</td> <td>$[\times 1 d1...d(y \times x1)]...[xk d1...d(y \times xk)]$</td> </tr> </table>	ASCII	ESC &	y	$c1$	$c2$	$[\times 1 d1...d(y \times x1)]...[xk d1...d(y \times xk)]$	Hex	1B 26	y	$c1$	$c2$	$[\times 1 d1...d(y \times x1)]...[xk d1...d(y \times xk)]$	Decimal	27 38	y	$c1$	$c2$	$[\times 1 d1...d(y \times x1)]...[xk d1...d(y \times xk)]$
ASCII	ESC &	y	$c1$	$c2$	$[\times 1 d1...d(y \times x1)]...[xk d1...d(y \times xk)]$														
Hex	1B 26	y	$c1$	$c2$	$[\times 1 d1...d(y \times x1)]...[xk d1...d(y \times xk)]$														
Decimal	27 38	y	$c1$	$c2$	$[\times 1 d1...d(y \times x1)]...[xk d1...d(y \times xk)]$														
[Range]	$y = 3$ $32 \leq c1 \leq c2 \leq 126$ $0 \leq x \leq 12$ Font A (12×24) $0 \leq x \leq 9$ Font B (9×17) $0 \leq d1 \dots d(y \times xk) \leq 255$																		
[Description]	<p>Defines user-defined characters.</p> <ul style="list-style-type: none"> • y specifies the number of bytes in the vertical direction. • $c1$ specifies the beginning character code for the definition, and $c2$ specifies the final code. • x specifies the number of dots in the horizontal direction. 																		
[Details]	<ul style="list-style-type: none"> • The allowable character code range is from ASCII code <20>H to <7E>H (95 characters). • It is possible to define multiple characters for consecutive character codes. If only one character is desired, use $c1 = c2$. • d is the dot data for the characters. The dot pattern is in the horizontal direction from the left side. Any remaining dots on the right side are blank. • The data to define a user-defined character is ($y \times x$) bytes. • Set a corresponding bit to 1 to print a dot or 0 to not print a dot. • This command can define different user-defined character patterns by each fonts. To select a font, use ESC ! • A user-defined character and a downloaded bit image cannot be defined simultaneously. When this command is executed, the downloaded bit image is cleared. • The user-defined character definition is cleared when: <ol style="list-style-type: none"> ① ESC @ is executed. ② ESC ? is executed. ③ FS q is executed. ④ GS * is executed. ⑤ The printer is reset or the power is turned off. • When the user-defined characters are defined in font B (9×17), only the most significant bit of the 3rd byte of data in vertical direction is effective. 																		
[Default]	The internal character set																		
[Reference]	ESC %, ESC ?																		
[Example]	<ul style="list-style-type: none"> • When font A (12×24) is selected. 																		



d1 = <0F>H d4 = <30>H d7 = <40>H
 d2 = <03>H d5 = <80>H d8 = <40>H
 d3 = <00>H d6 = <00>H d9 = <20>H

- When font B (9 × 17) is selected.





ESC * m nL nH d1... dk

[Name] Select bit-image mode

[Format] ASCII ESC * *m nL nH d1...dk*
 Hex 1B 2A *m nL nH d1...dk*
 Decimal 27 42 *m nL nH d1...dk*

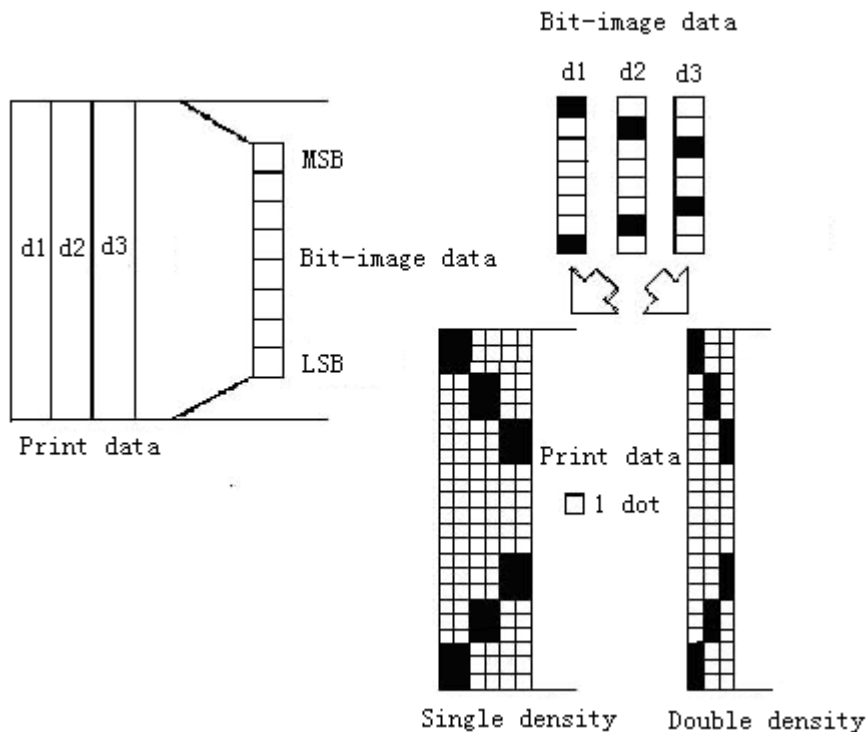
[Range] $m = 0, 1, 32, 33$
 $0 \leq nL \leq 255$
 $0 \leq nH \leq 3$
 $0 \leq d \leq 255$

[Description] Selects a bit-image mode using *m* for the number of dots specified by *nL* and *nH*, as follows:

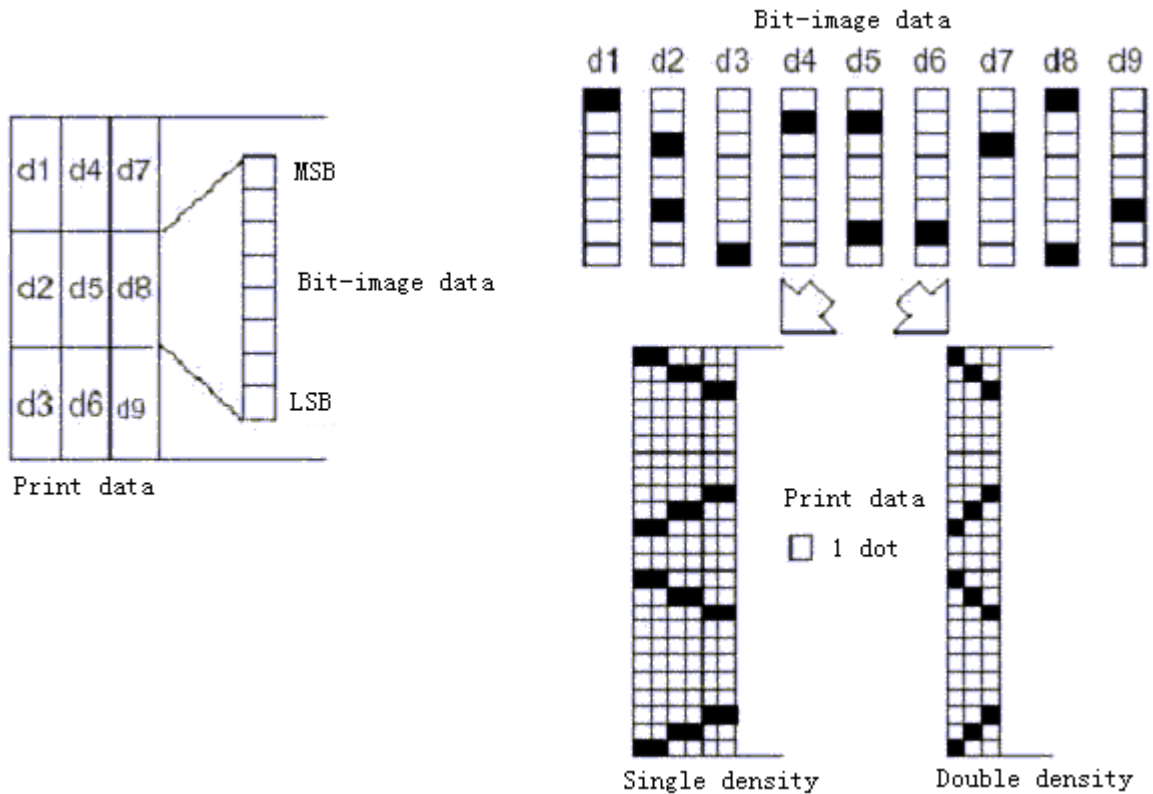
<i>m</i>	Mode	Vertical Direction		Horizontal Direction	
		Number of Dots	Dot Density	Dot Density	Number of Data (K)
0	8-dot single-density	8	67 DPI	100 DPI	$nL + nH \times 256$
1	8-dot double-density	8	67 DP	200 DPI	$nL + nH \times 256$
32	24-dot single-density	24	200DPI	100 DPI	$(nL + nH \times 256) \times 3$
33	24-dot double-density	24	200 DPI	200DPI	$(nL + nH \times 256) \times 3$

- [Details]
- If the values of *m* is out of the specified range, *nL* and data following are processed as normal data.
 - The *nL* and *nH* indicate the number of dots of the bit image in the horizontal direction. The number of dots is calculated by $nL + nH \times 256$.
 - If the bit-image data input exceeds the number of dots to be printed on a line, the excess data is ignored.

- *d* indicates the bit-image data. Set a corresponding bit to 1 to print a dot or to 0 to not print a dot.
- If the width of the printing area set by **GS L** and **GS W** less than the width required by the data sent with the **ESC *** command, the following will be performed on the line in question (but the printing cannot exceed the maximum printable area):
 - ① The width of the printing area is extended to the right to accommodate the amount of data.
 - ② If step ① does not provide sufficient width for the data, the left margin is reduced to accommodate the data.
- After printing a bit image, the printer returns to normal data processing mode.
- This command is not affected by print modes (emphasized, double-strike, underline, character size or white/black reverse printing), except upside-down printing mode.
- The relationship between the image data and the dots to be printed is as follows:
- When 8-dot bit image is selected:



- When 24-dot bit image is selected:



ESC – *n*

[Name] Turn underline mode on/off

[Format] ASCII ESC - *n*
 Hex 1B 2D *n*
 Decimal 27 45 *n*

[Range] $0 \leq n \leq 2, 48 \leq n \leq 50$

[Description] Turns underline mode on or off, based on the following values of *n*:

<i>n</i>	Function
0, 48	Turns off underline mode
1, 49	Turns on underline mode (1-dot thick)
2, 50	Turns on underline mode (2-dots thick)

[Details]

- The printer can underline all characters (including right-side character spacing), but cannot underline the space set by **HT**.
- The printer cannot underline 90° clockwise rotated characters and white/black inverted characters.
- When underline mode is turned off by setting the value of *n* to 0 or 48, the following data is not underlined, and the underline thickness set before the mode is turned off does not change. The default underline thickness is 1 dot.
- Changing the character size does not affect the current underline thickness.
- Underline mode can also be turned on or off by using **ESC !**. Note, however, that the last received command is effective.
- This command does not affect the setting of Kanji characters.

[Default] *n* = 0

[Reference] **ESC !**

ESC 2

[Name]	Select default line spacing		
[Format]	ASCII	ESC	2
	Hex	1B	32
	Decimal	27	50
[Description]	Selects 1/6-inch line (approximately 4.23mm) spacing.		
[Details]	• The line spacing can be set independently in standard mode and in page mode.		
[Reference]	ESC 3		

ESC 3 *n*

[Name]	Set line spacing			
[Format]	ASCII	ESC	3	<i>n</i>
	Hex	1B	33	<i>n</i>
	Decimal	27	51	<i>n</i>
[Range]	$0 \leq n \leq 255$			
[Description]	Sets the line spacing to [<i>n</i> × vertical or horizontal motion unit] inches.			
[Details]	<ul style="list-style-type: none">• The line spacing can be set independently in standard mode and in page mode.• The horizontal and vertical motion unit are specified by GS P. Changing the horizontal or vertical motion unit does not affect the current line spacing.• The GS P command can change the horizontal (and vertical) motion unit. However, the value cannot be less than the minimum vertical movement amount, and it must be in even units of the minimum vertical movement amount.• In standard mode, the vertical motion unit (y) is used.• In page mode, this command functions as follows, depending on the starting position of the printable area:<ol style="list-style-type: none">① When the starting position is set to the upper left or lower right of the printable area using ESC T, the vertical motion unit (y) is used.② When the starting position is set to the upper right or lower left of the printable area using ESC T, the horizontal motion unit (x) is used.• The maximum paper feed amount is 1016 mm (40 inches). Even if a paper feed amount of more than 1016 mm (40 inches) is set, the printer feeds the paper only 1016 mm (40 inches).			
[Default]	Line spacing equivalent to approximately 4.23mm (1/6 inches).			
[Reference]	ESC 2, GS P			

ESC = *n* (*)

[Name]	Set peripheral device			
[Format]	ASCII	ESC	=	<i>n</i>
	Hex	1B	3D	<i>n</i>
	Decimal	27	61	<i>n</i>
[Range]	$1 \leq n \leq 255$			
[Description]	Selects device to which host computer sends data, using <i>n</i> as follows:			

Bit	Off/On	Hex	Decimal	Function
0	Off	00	0	Printer disabled
	On	01	1	Printer enabled
1-7	-	-	-	Undefined

[Details] . When the printer is disabled, it ignores all data except for error-recovery commands

(**DLE EOT, DLE ENQ, DLE DC4**) until it is enabled by this command.

[Default] $n = 1$

ESC ? *n*

[Name] Cancel user-defined characters

[Format]

ASCII	ESC	?	<i>n</i>
Hex	1B	3F	<i>n</i>
Decimal	27	63	<i>n</i>

[Range] $32 \leq n \leq 126$

[Description] Cancels user-defined characters.

[Details]

- This command cancels the pattern defined for the character code specified by *n*. After the user-defined characters is canceled, the corresponding pattern for the internal character is printed.
- This command deletes the pattern defined for the specified code in the font selected by **ESC !**.
- If a user-defined character has not been defined for the specified character code, the printer ignores this command.

[Reference] **ESC &, ESC %**

ESC @

[Name] Initialize printer

[Format]

ASCII	ESC	@
Hex	1B	40
Decimal	27	64

[Description] Clears the data in the print buffer and resets the printer mode to the mode that was in effect when the power was turned on.

[Details]

- The DIP switch settings are not checked again.
- The data in the receive buffer is not cleared.
- The macro definition is not cleared.
- The NV bit image data is not cleared.
- The data of the user NV memory is not cleared.

ESC D *n1...nk* NUL

[Name] Set horizontal tab positions

[Format]

ASCII	ESC	D	<i>n1...nk</i>	<i>NUL</i>
Hex	1B	44	<i>n1...nk</i>	<i>00</i>
Decimal	27	68	<i>n1...nk</i>	<i>0</i>

[Range] $1 \leq n \leq 255$
 $0 \leq k \leq 32$

[Description] Sets horizontal tab positions.

- *n* specifies the column number for setting a horizontal tab position from the beginning of the line.
- *k* indicates the total number of horizontal tab positions to be set.

[Details]

- The horizontal tab position is stored as a value of [character width \times *n*] measured from the beginning of the line. The character width includes the right-side character spacing, and double-width characters are set with twice the width of normal characters.
- This command cancels the previous horizontal tab settings.

- When setting $n = 8$, the print position is moved to column 9 by sending **HT**.
- Up to 32 tab positions ($k = 32$) can be set. Data exceeding 32 tab positions is processed as normal data.
- Transmit $[n]k$ in ascending order and place a NUL code 0 at the end.
- When $[n]k$ is less than or equal to the preceding value $[n]k-1$, tab setting is finished and the following data is processed as normal data.
- **ESC D NUL** cancels all horizontal tab positions.
- The previously specified horizontal tab positions do not change, even if the character width changes.
- The character width is memorized for each standard and page mode.

[Default] The default tab positions are at intervals of 8 characters (columns 9, 17, 25,...) for font A (12 \times 24).

[Reference] **HT**

ESC E n

[Name] Turn emphasized mode on/off

[Format]	ASCII	ESC	E	n
	Hex	1B	45	n
	Decimal	27	69	n

[Range] $0 \leq n \leq 255$

[Description] Turns emphasized mode on or off

- When the LSB of n is 0, emphasized mode is turned off.
- When the LSB of n is 1, emphasized mode is turned on.

[Details] • Only the least significant bit of n is enabled.

- This command and **ESC !** turn on and off emphasized mode in the same way. Be careful when this command is used with **ESC !**.

[Default] $n = 0$

[Reference] **ESC !**

ESC G n

[Name] Turn on/off double-strike mode

[Format]	ASCII	ESC	G	n
	Hex	1B	47	n
	Decimal	27	71	n

[Range] $0 \leq n \leq 255$

[Description] Turns double-strike mode on or off.

- When the LSB of n is 0, double-strike mode is turned off.
- When the LSB of n is 1, double-strike mode is turned on.

[Details] • Only the lowest bit of n is enabled.

- Printer output is the same in double-strike mode and in emphasized mode.

[Default] $n = 0$

[Reference] **ESC E**

ESC J n

[Name] Print and feed paper

[Format]	ASCII	ESC	J	n
	Hex	1B	4A	n

	Decimal	27	74	<i>n</i>
[Range]	$0 \leq n \leq 255$			
[Description]	Prints the data in the print buffer and feeds the paper [<i>n</i> × vertical or horizontal motion unit] inches.			
[Details]	<ul style="list-style-type: none"> • After printing is completed, this command sets the print starting position to the beginning of the line. • The paper feed amount set by this command does not affect the values set by ESC 2 or ESC 3. • The horizontal and vertical motion unit are specified by GS P. • The GS P command can change the vertical (and horizontal) motion unit. However, the value cannot be less than the minimum vertical movement amount, and it must be in even units of the minimum vertical movement amount. • In standard mode, the printer uses the vertical motion unit (<i>y</i>). • In page mode, this command functions as follows, depending on the starting position of the printable area: <ul style="list-style-type: none"> ① When the starting position is set to the upper left or lower right of the printable area using ESC T, the vertical motion unit (<i>y</i>) is used. ② When the starting position is set to the upper right or lower left of the printable area using ESC T, the horizontal motion unit (<i>x</i>) is used. • The maximum line spacing is 1016mm (40 inches). When the setting value exceeds the maximum, it is converted to the maximum automatically. 			
[Reference]	GS P			

ESC L (*)

[Name]	Select page mode			
[Format]	ASCII	ESC	L	
	Hex	1B	4C	
	Decimal	27	76	
[Description]	Switches from standard mode to page mode.			
[Details]	<ul style="list-style-type: none"> • This command is enabled only when processed at the beginning of a line in standard mode. • This command has no effect in page mode. • After printing by FF is completed or by using ESC S, the printer returns to standard mode. • This command sets the position where data is buffered to the position specified by ESC T within the printing area defined by ESC W. • This command switches the settings for the following commands (in which the values can be set independently in standard mode and page mode) to those for page mode: <ul style="list-style-type: none"> ① Set right-side character spacing: ESC SP, FS S ② Select default line spacing: ESC 2, ESC 3 • Only valve settings is possible for the following commands in page mode; these commands are not executed. <ul style="list-style-type: none"> ① Turn 90° clockwise rotation mode on/off: ESC V ② Select justification: ESC a ③ Turn upside-down printing mode on/off: ESC { ④ Set left margin: GS L 			

- ⑤ Set printable area width: **GS W**
- The following command is ignored in page mode:
 - ① Execute test print: **GS (A**
- The following command is not available in page mode:
 - ① Print NV bit image: **FS p**
 - ② Define NV bit image: **FS q**
 - ③ Write to user NV memory: **FS g 1**
 - ④ Print raster bit image: **GS v 0**
- The printer returns to standard mode when power is turned on, the printer is reset, or **ESC @** is used.

[Reference] **FF, CAN, ESC FF, ESC S, ESC T, ESC W, GS \$, GS **

ESC M n (*)

[Name] Select character font

[Format] ASCII ESC M n
 Hex 1B 4D n
 Decimal 27 77 n

[Range] n = 0, 1, 48, 49

[Description] Selects character fonts.

n	Function
0,48	Character font A (12 × 24) selected.
1,49	Character font B (9 × 17) selected.

ESC R n

[Name] Select an international character set

[Format] ASCII ESC R n
 Hex 1B 52 n
 Decimal 27 82 n

[Range] $0 \leq n \leq 15$

[Description] Selects an international character set *n* from the following table:

<i>n</i>	Character
0	U.S.A.
1	France
2	Germany
3	U.K.
4	Denmark
5	Sweden
6	Italy
7	Spain
8	Japan

9	Norway
10	Denmark
11	Spain
12	Latin
13	Korea
14	Slovenia/Croatia
15	Chinese

The character sets for Slovenia/Croatia and China are ZJported only in the Simplified Chinese model.

[Default] Simplified Chinese model: $n = 15$
Models other than the Simplified Chinese model: $n = 0$

ESC S (*)

[Name] Select standard mode

[Format]

ASCII	ESC	S
Hex	1B	53
Decimal	27	83

[Description] Switches from page mode to standard mode.

[Details]

- This command is effective only in page mode.
- Data buffered in page mode are cleared.
- This command sets the print position to the beginning of the line.
- The printing area set by **ESC W** are initialized.
- This command switches the settings for the following commands (in which the values can be set independently in standard mode and page mode) to those for standard mode:
 - ① Set right-side character spacing: **ESC SP**, **FS S**
 - ② Select default line spacing: **ESC 2**, **ESC 3**
- The following commands are enabled only to set in standard mode.
 - ① Set printing area in page mode: **ESC W**
 - ② Select print direction in page mode: **ESC T**
- The following commands are ignored in standard mode.
 - ① Set absolute vertical print position in page mode: **GS \$**
 - ② Set relative vertical print position in page mode: **GS **
- Standard mode is selected automatically when power is turned on, the printer is reset, or command **ESC @** is used.

[Reference] **FF**, **ESC FF**, **ESC L**

ESC T n (*)

[Name] Select print direction in page mode

[Format]

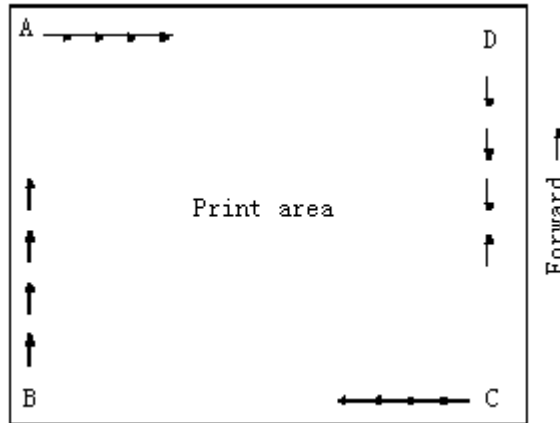
ASCII	ESC	T	n
Hex	1B	54	n
Decimal	27	84	n

[Range] $0 \leq n \leq 3$

48 ≤ n ≤ 51

[Description] Selects the print direction and starting position in page mode.
n specifies the print direction and starting position as follows:

n	Print Direction	Starting Position
0, 48	Left to right	Upper left
1, 49	Bottom to top	Lower left
2, 50	Right to left	Lower right
3, 51	Top to bottom	Upper right



- [Details]
- When the command is input in standard mode, the printer executes only internal flag operation. This command does not affect printing in standard mode.
 - This command sets the position where data is buffered within the printing area set by **ESC W**.
 - Parameters for horizontal or vertical motion units (x or y) differ as follows, depending on the starting position of the printing area:
 - ① If the starting position is the upper left or lower right of the printing area, data is buffered in the direction perpendicular to the paper feed direction:
 Commands using horizontal motion units: **ESC SP, ESC \$, ESC **
 Commands using vertical motion units: **ESC 3, ESC J, GS \$, GS **
 - ② If the starting position is the upper right or lower left of the printing area, data is buffered in the paper feed direction:
 Commands using horizontal motion units: **ESC 3, ESC J, GS \$, GS **
 Commands using vertical motion units: **ESC SP, ESC \$, ESC **

[Default] n = 0

[Reference] **ESC \$, ESC L, ESC W, ESC \, GS \$, GS P, GS **

ESC V n (*)

[Name] Turn 90° clockwise rotation mode on/off

[Format]

ASCII	ESC	V	n
Hex	1B	56	n
Decimal	27	86	n

[Range] 0 ≤ n ≤ 1, 48 ≤ n ≤ 49

[Description] Turns 90° clockwise rotation mode on/off
n is used as follows:

n	Function
0, 48	Turns off 90° clockwise rotation mode
1, 49	Turns on 90° clockwise rotation mode

[Details]

- This command affects printing in standard mode. However, the setting is always effective.
- When underline mode is turned on, the printer does not underline 90° clockwise-rotated.
- Double-width and double-height commands in 90° rotation mode enlarge characters in the opposite directions from double-height and double-width commands in normal mode.

[Default] n = 0

[Reference] **ESC !, ESC –**

ESC W xL xH yL yH dxL dxH dyL dyH (*)

[Name] Set printing area in page mode

[Format]

ASC II	ESC	W	xL	xH	yL	yH	dxL	dxH	dyL	dyH
Hex	1B	57	xL	xH	yL	yH	dxL	dxH	dyL	dyH
Decimal	27	87	xL	xH	yL	yH	dxL	dxH	dyL	dyH

[Range] $0 \leq xL, xH, yL, yH, dxL, dxH, dyL, dyH \leq 255$ (except $dxL = dxH = 0$ or $dyL = dyH = 0$)

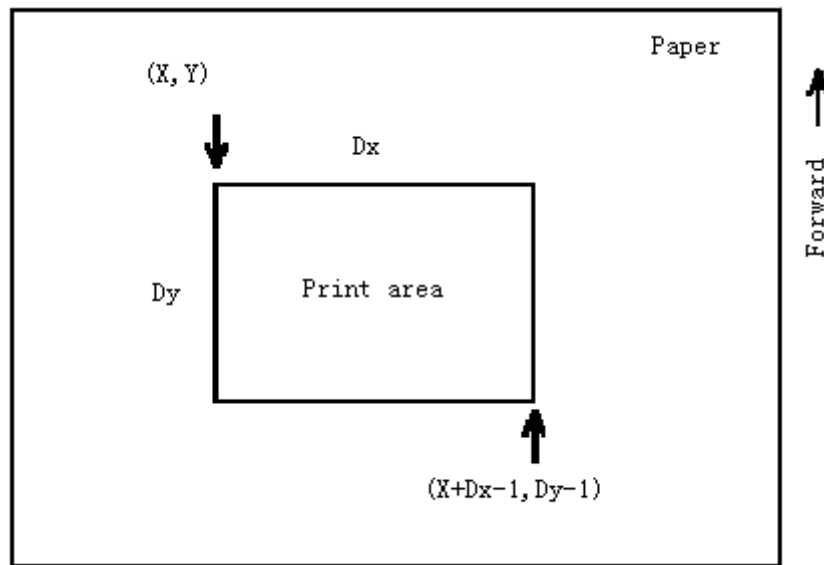
[Description]

- The horizontal starting position, vertical starting position, printing area width, and printing area height are defined as x0, y0, dx (inch), dy (inch), respectively. Each setting for the printing area is calculated as follows:
 $x0 = [(xL + xH \times 256) \times (\text{horizontal motion unit})]$
 $y0 = [(yL + yH \times 256) \times (\text{vertical motion unit})]$
 $dx = [dxL + dxH \times 256] \times (\text{horizontal motion unit})]$
 $dy = [dyL + dyH \times 256] \times (\text{vertical motion unit})]$
 The printing area is set as shown in the figure below.

[Details]

- If this command is input in standard mode, the printer executes only internal flag operation. This command does not affect printing in standard mode.
- If the horizontal or vertical starting position is set outside the printable area, the printer stops command processing and processes the following data as normal data.
- If the printing area width or height is set to 0, the printer stops command processing and processes the following data as normal data.
- This command sets the position where data is buffered to the position specified by **ESC T** within the printing area.
- If (horizontal starting position + printing area width) exceeds the printable area, the printing area width is automatically set to (horizontal printable area - horizontal starting position).
- If (vertical starting position + printing area height) exceeds the printable area, the printing area height is automatically set to (vertical printable area - vertical starting position).

- The horizontal and vertical motion unit are specified by **GS P**. Changing the horizontal or vertical motion unit does not affect the current printing area.
- The **GS P** command can change the horizontal (and vertical) motion unit. However, the value cannot be less than the minimum horizontal movement amount, and it must be in even units of minimum horizontal movement amount.
- Use the horizontal motion unit (*x*) for setting the horizontal starting position and printing area width, and use the vertical motion unit (*y*) for setting the vertical starting position and printing area height.
- When the horizontal starting position , vertical starting position, printing area width, and printing area height are defined as *X*, *Y*, *Dx*, and *Dy* respectively, the printing area is set as shown in the figure below.



- This printable area for this printer is approximately 72 mm in the horizontal direction and approximately 117.3 mm (1662/360 inches) in the vertical direction.

[Default] $xL = xH = yL = yH = 0$
 $dxL = 0, dxH = 2, dyL = 126, dyH = 6$

[Reference] **CAN, ESC L, ESC T, GS P**

ESC \ nL nH

[Name]	Set relative print position				
[Format]	ASCII	ESC	\	<i>nL</i>	<i>nH</i>
	Hex	1B	5C	<i>nL</i>	<i>nH</i>
	Decimal	27	92	<i>nL</i>	<i>nH</i>
[Range]	$0 \leq nL \leq 255$				
	$0 \leq nH \leq 255$				
[Description]	Sets the print starting position based on the current position by using the horizontal or vertical motion unit.				
	<ul style="list-style-type: none"> • This command sets the distance from the current position to $[(nL + nH \times 256) \times \text{horizontal or vertical motion unit}]$ 				
[Details]	<ul style="list-style-type: none"> • Any setting that exceeds the printable area is ignored. • When pitch N is specified to the right: 				

$$nL + nH \times 256 = N$$

When pitch N is specified to the left (the negative direction), use the complement of 65536.

When pitch N is specified to the left:

$$nL + nH \times 256 = 65536 - N$$

- The print starting position moves from the current position to [N \times horizontal or vertical motion unit]
- The horizontal and vertical motion unit are specified by **GS P**.
- The **GS P** command can change the horizontal (and vertical) motion unit. However, the value cannot be less than the minimum horizontal movement amount, and it must be in even units of the minimum horizontal movement amount.
- In standard mode, the horizontal motion unit is used.
- In page mode, the horizontal or vertical motion unit differs as follows, depending on the starting point of the printing area:
 - ① When the starting position is set to the upper left or lower right of the printable area using **ESC T**, the horizontal motion unit (x) is used.
 - ② When the starting position is set to the upper right or lower left of the printable area using **ESC T**, the vertical motion unit (y) is used.

[Reference] **ESC \$, GS P**

ESC a n

[Name] Select justification

[Format]

ASCII	ESC	a	n
Hex	1B	61	n
Decimal	27	97	n

[Range] $0 \leq n \leq 2, 48 \leq n \leq 50$

[Description] Aligns all the data in one line to the specified position
n selects the justification as follows:

n	Justification
0, 48	Left justification
1, 49	Centering
2, 50	Right justification

- [Details]
- The command is enabled only when processed at the beginning of the line in standard mode.
 - If this command is input in page mode, the printer performs only internal flag operations.
 - This command has no effect in page mode.
 - This command executes justification in the printing area.
 - This command justifies the space area according to **HT**, **ESC \$** or **ESC **.

[Default] n = 0

[Example]

Left justification

ABC
ABCD
ABCDE

Centering

ABC
ABCD
ABCDE

Right justification

ABC
ABCD
ABCDE

ESC c 3 n (*)

[Name] Select paper sensor(s) to output paper end signals

[Format] ASCII ESC c 3 n
Hex 1B 63 33 n
Decimal 27 99 51 n

[Range] $0 \leq n \leq 255$

[Description] Selects the paper sensor(s) to output paper end signals

- Each bit of n is used as follows:

Bit	Off/On	Hex	Decimal	Function
0	Off	00	0	Paper roll near-end sensor disabled
	On	01	1	Paper roll near-end sensor enabled
1	Off	00	0	Paper roll end sensor disabled
	On	02	2	Paper roll near-end sensor enabled
2	Off	00	0	Paper roll end sensor disabled
	On	04	4	Paper roll near-end sensor enabled
3	Off	00	0	Paper roll end sensor disabled
	On	08	8	Paper roll near-end sensor enabled
4-7	-	-	-	Undefined

[Details]

- It is possible to select multiple sensors to output signals. Then, if any of the sensors detects a paper end, the paper end signal is output.
- The command is available only with a parallel interface and is ignored with a serial interface.
- Sensor is switched when executing this command. The paper end signal switching be delayed depending on the receive buffer state.
- If either bit 0 or bit 1 is on, the paper roll near-end sensor is selected as the paper sensor outputting paper-end signals
- If either bit 2 or bit 3 is on, the paper roll end sensor is selected as the paper sensor outputting paper-end signals.
- When all the sensors are disabled, the paper end signal always outputs a paper present status.

ESC c 4 n (*)

[Name] Select paper sensor(s) to stop printing

[Format] ASCII ESC c 4 n
Hex 1B 63 34 n
Decimal 27 99 52 n

[Range] $0 \leq n \leq 255$

[Description] Selects the paper sensor(s) used to stop printing when a paper-end is detected, using n as follows:

Bit	Off/On	Hex	Decimal	Function
0	Off	00	0	Paper roll near-end sensor disabled
	On	01	1	Paper roll near-end sensor enabled
1	Off	00	0	Paper roll end sensor disabled

	On	02	2	Paper roll near-end sensor enabled
2-7	-	-	-	Undefined

- [Details]
- When a paper sensor is enabled with this command, printing is stopped only when the corresponding paper is selected for printing.
 - When a paper-end is detected by the paper roll sensor, the printer goes offline after printing stops.
 - When either bit 0 or 1 is on, the printer selects the paper roll near-end sensor for the paper sensor to stop printing.

[Default] $n = 0$

ESC C 5 n

[Name] Enable/disable panel buttons

[Format]	ASCII	ESC	c	5	<i>n</i>
	Hex	1B	63	35	<i>n</i>
	Decimal	27	99	53	<i>n</i>

[Range] $0 \leq n \leq 255$

[Description] Enables or disables the panel buttons.

- When the LSB of *n* is 0, the panel buttons are enabled.
- When the LSB of *n* is 1, the panel buttons are disabled.

[Details]

- Only the lowest bit of *n* is valid.
- When the panel buttons are disabled, none of them are usable when the printer cover is closed.
- In this printer, the panel buttons are the FEED button.
- In the macro ready mode, the FEED button are enabled regardless of the settings of this command; however, the paper cannot be fed by using these buttons.

[Default] $n = 0$

ESC d n

[Name] Print and feed *n* lines

[Format]	ASCII	ESC	d	<i>n</i>
	Hex	1B	64	<i>n</i>
	Decimal	27	100	<i>n</i>

[Range] $0 \leq n \leq 255$

[Description] Prints the data in the print buffer and feeds *n* lines.

[Details]

- This command sets the print starting position to the beginning of the line.
- This command does not affect the line spacing set by **ESC 2** or **ESC 3**.
- The maximum paper feed amount is 1016 mm (40 inches). If the paper feed amount (*nx* line spacing) of more than 1016 mm (40 inches) is specified, the printer feeds the paper only 1016 mm (40 inches).

[Reference] **ESC 2, ESC 3**

ESC p m t1 t2

[Name] Generate pulse

[Format]	ASCII	ESC	p	<i>m</i>	<i>t1</i>	<i>t2</i>
	Hex	1B	70	<i>m</i>	<i>t1</i>	<i>t2</i>
	Decimal	27	112	<i>m</i>	<i>t1</i>	<i>t2</i>

[Range] $m = 0, 1, 48, 49$

$0 \leq t1 \leq 255, 0 \leq t2 \leq 255$

[Description] Outputs the pulse specified by t1 and t2 to connector pin m as follows:

m	Connector pin
0, 48	Drawer kick-out connector pin 2.
1, 49	Drawer kick-out connector pin 5.

[Details] • The pulse ON time is [$t1 \times 2$ ms] and the OFF time is [$t2 \times 2$ ms].
 • If $t2 < t1$, the OFF time is [$t1 \times 2$ ms]

[Reference] **DLE DC4**

ESC t n

[Name] Select character code table

[Format] ASCII ESC t n
 Hex 1B 74 n
 Decimal 27 116 n

[Range] $0 \leq n \leq 10, 16 \leq n \leq 21$

[Description] Selects a page n from the character code table.

n	Page
0	PC437 [U.S.A.Standard Europe]
1	Katakana
2	PC850:Multilingual
3	PC860:Portuguese
4	PC863 [Canadian French]
5	PC865:Nodic
6	West Europe
7	Greek
8	Hebrew
9	PC755:East Europe
10	Iran
16	WPC1252
17	PC866:Cyrillic#2
18	PC852:Latin2
19	PC858
20	IranII
21	Latvian

[Default] $n = 0$

ESC { n

[Name] Turns on/off upside-down printing mode

[Format] ASCII ESC { n
 Hex 1B 7B n
 Decimal 27 123 n

[Range] $0 \leq n \leq 255$

[Description] Turns upside-down printing mode on or off.

- When the LSB of n is 0, upside-down printing mode is turned off.
- When the LSB of n is 1, upside-down printing mode is turned on.

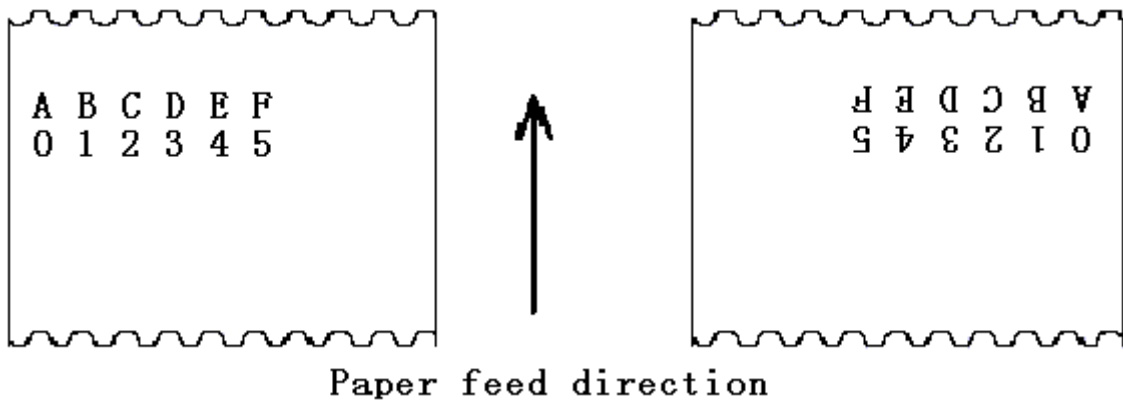
[Details]

- Only the lowest bit of n is valid.
- This command is enabled only when processed at the beginning of a line in standard mode.
- When this command is input in page mode, the printer performs only internal flag operations.
- This command does not affect printing in page mode.
- In upside-down printing mode, the printer rotates the line to be printed by 180° and then prints it.

[Default]

$n = 0$

[Example]



FS p n m (*)

[Name] Print NV bit image

[Format] ASCII FS p n m
 Hex 1C 70 n m
 Decimal 28 112 n m

[Range] $0 \leq n \leq 255$
 $0 \leq m \leq 3, 48 \leq m \leq 51$

[Description] Prints a NV bit image n using the mode specified by m .

m	Mode	Vertical Dot Density	Horizontal Dot Density
0, 48	Normal	200 dpi	200 dpi
1, 49	Double-width	200 dpi	100 dpi
2, 50	Double-height	100 dpi	200 dpi
3, 51	Quadruple	100 dpi	100 dpi

[dpi: dots per 25.4 mm {1"}]

- n is the number of the NV bit image (defined using the **FS q** command).
- m specifies the bit image mode.

[Details]

- NV bit image means a bit image which is defined in a non-volatile memory by **FS q** and printed by **FS p**.
- This command is not effective when the specified NV bit image has not been defined.
- In standard mode, this command is effective only when there is no data in the print buffer.

- In page mode, this command is not effective.
- This command is not affected by print modes (emphasized, double-strike, underline, character size, white/black reverse printing, or 90° rotated characters, etc.), except upside-down printing mode.
- If the printing area width set by **GS L** and **GS W** for the NV bit image is less than one vertical line, the following processing is performed only on the line in question. However, in NV bit image mode, one vertical line means 1 dot in normal mode ($m=0$, 48) and in double-height mode ($m=2$, 50), and it means 2 dots in double-width mode ($m=1$, 49) and in quadruple mode ($m=3$, 51).
 - ① The printing area width is extended to the right in NV bit image mode up to one line vertically. In this case, printing does not exceed the printable area.
 - ② If the printing area width cannot be extended by one line vertically, the left margin is reduced to accommodate one line vertically.
- If the downloaded bit-image to be printed exceeds one line, the excess data is not printed.
- This command feeds dots (for the height n of the NV bit-image) in normal and double-width modes, and (for the height $n \cdot 2$ of the NV bit-image) in double-height and quadruple modes, regardless of the line spacing specified by **ESC 2** or **ESC 3**.
- After printing the bit image, this command sets the print position to the beginning of the line and processes the data that follows as normal data.

[References] **ESC** , **FS q**, **GS /**, **GS v 0**

FS q n [xL xH yL yH d1...dk]1...[xL xH yL yH d1...dk]n (*)

[Name] Define NV bit image

[Format] ASCII FS q n [xL xH yL yH d1...dk]1...[xL xH yL yH d1...dk]n
 Hex 1C 71 n [xL xH yL yH d1...dk]1...[xL xH yL yH d1...dk]n
 Decimal 28 113 n [xL xH yL yH d1...dk]1...[xL xH yL yH d1...dk]n

[Range] $0 \leq n \leq 255$
 $0 \leq xL \leq 255$
 $0 \leq xH \leq 3$ (when $1 \leq (xL + xH \times 256) \leq 1023$)
 $0 \leq yL \leq 255$
 $0 \leq yH \leq 1$ (when $1 \leq (yL + yH \times 256) \leq 288$)
 $0 \leq d \leq 255$
 $k = (xL + xH \times 256) \times (yL + yH \times 256) \times 8$
 Total defined data area = 0.5M bits (64K bytes)

[Description] Define the NV bit image specified by n .

- n specifies the number of the defined NV bit image.
 - xL , xH specifies $(xL + xH \times 256) \times 8$ dots in the horizontal direction for the NV bit image you are defining.
 - yL , yH specifies $(yL + yH \times 256) \times 8$ dots in the vertical direction for the NV bit image you are defining.

[Details] • This command cancels all NV bit images that have already been defined by this command. The printer can not redefine only one of several data definitions previously defined. In this case, all data needs to be sent again.

- From the beginning of the processing of this command till the finish of hardware reset, mechanical operations (including initializing the position of the printer head when the cover is open, paper feeding by using the FEED button, etc.) cannot be performed.
- During processing this command, the printer is in BUSY when writing the data to the NV user memory and stops receiving data. Therefore it is prohibited to transmit the data including the real-time commands during the execution of this command.
- NV bit image means a bit image which is defined in a non-volatile memory by **FS q** and printed by **FS p**.
- In standard mode, this command is effective only when processed at the beginning of the line.
- In page mode, this command is not effective.
 - This command is effective when 7 bytes <FS<yH> is processed as a normal value.
 - When the amount of data exceeds the capacity left in the range defined by *xL*, *xH*, *yL*, *yH*, the printer processes *xL*, *xH*, *yL*, *yH* out of the defined range.
 - In the first group of NV bit images, when any of the parameters *xL*, *xH*, *yL*, *yH* is out of the definition range, this command is disabled.
 - In groups of NV bit images other than the first one, when the printer processes *xL*, *xH*, *yL*, *yH* out of the defined range, it stops processing this command and starts writing into the NV images. At this time, NV bit images that haven't been defined are disabled (undefined), but any NV bit images before that are enabled.
- The *d* indicates the definition data. In data (*d*) a 1 bit specifies a dot to be printed and a 0 bit specifies a dot not to be printed.
- This command defines *n* as the number of a NV bit image. Numbers rise in order from NV bit image 01H. Therefore, the first data group [*xL* *xH* *yL* *yH* *d1*...*dk*] is NV bit image 01H, and the last data group [*xL* *xH* *yL* *yH* *d1*...*dk*] is NV bit image *n*. The total agrees with the number of NV bit images specified by command **FS p**.
- A definition data of a NV bit image consists of [*xL* *xH* *yL* *yH* *d1*...*dk*]. Therefore, when only one NV bit image is defined *n*=1, the printer processes a data group [*xL* *xH* *yL* *yH* *d1*...*dk*] once. The printer uses $([data: (xL + xH \times 256) \times (yL + yH \times 256) \times 8] + [header :4])$ bytes of NV memory.
- The definition area in this printer is a maximum of 0.5M bits (64K bytes). This command can define several NV bit images, but cannot define a bit image data whose total capacity [bit image data + header] exceeds 0.5M bits (64K bytes).
- The printer is busy immediately before writing into NV memory.
 - The printer does not transmit ASB status and perform status detection during processing of this command even when ASB is specified.
 - When this command is received during macro definition, the printer ends macro definition, and begins performing this command.
 - Once a NV bit image is defined, it is not erased by performing **ESC @**, reset, and power off.
 - This command performs only definition of a NV bit image and does not perform printing. Printing of the NV bit image is performed by the **FS p** command.
- Frequent write command execution may cause damage the NV memory.

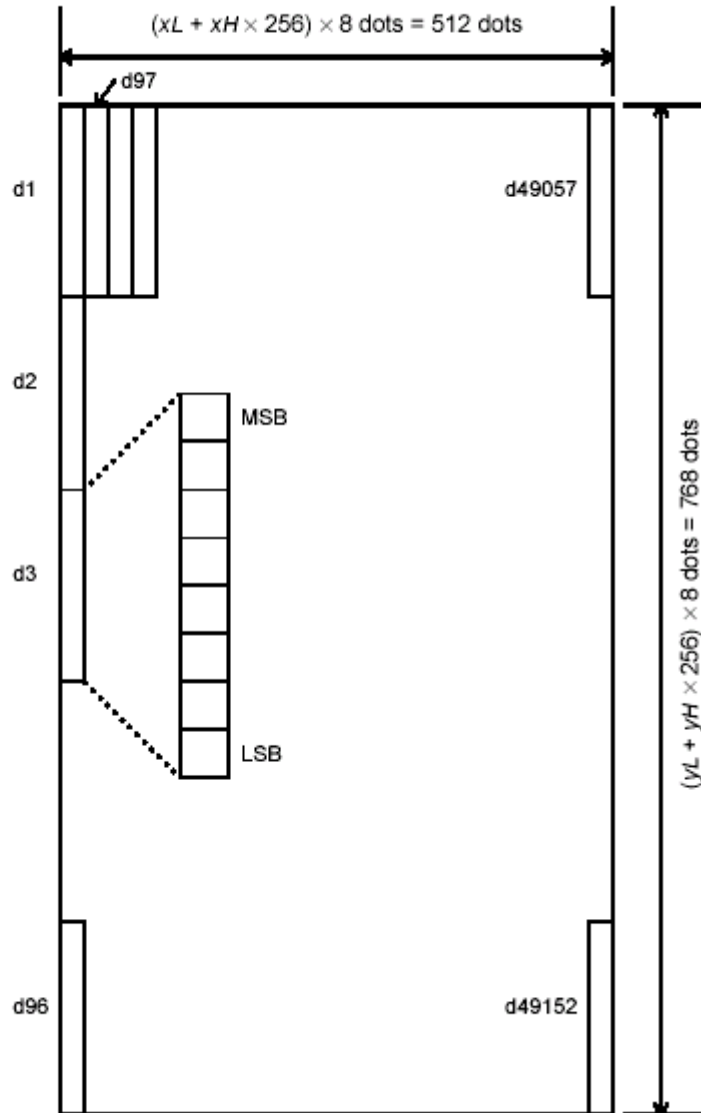
[Details]

Therefore, it is recommended to write the NV memory 10 times or less a day.

- The printer performs a hardware reset after the procedure to place the image into the NV memory. Therefore, user-defined characters, downloaded bit images, and macros should be defined only after completing this command. The printer clears the receive and print buffers and resets the mode to the mode that was in effect at power on. At this time, DIP switch settings are checked again.

[Reference] **FS p**

[Example] When $xL = 64$, $xH = 0$, $yL = 96$, $yH = 0$



GS ! n (*)

[Name] Select character size

[Format] ASCII GS ! n

Hex 1D 21 n

Decimal 29 33 n

[Range] $0 \leq n \leq 255$

($1 \leq$ vertical number of times ≤ 8 , $1 \leq$ horizontal number of times ≤ 8)

[Description] Selects the character height using bits 0 to 2 and selects the character width using bits 4 to 7, as follows:

Bit	Off/On	Hex	Decimal	Function
0	Character height selection. See Table 2.			
1				
2				
3				
4	Character width selection. See Table 1.			
5				
6				
7				

Table 1 Table 2

Character Width Selection

Hex	Decimal	Width
00	0	1(normal)
10	16	2(double-width)
20	32	3
30	48	4
40	64	5
50	80	6
60	96	7
70	112	8

Table 1 Table 2

Character Height Selection

Hex	Decimal	Width
00	0	1(normal)
10	16	2(double-height)
20	32	3
30	48	4
40	64	5
50	80	6
60	96	7
70	112	8

- [Details]
- This command is all characters (alphanumeric and Kanji) effective except for HRI characters.
 - If n is outside of the defined range, this command is ignored.
 - In standard mode, the vertical direction is the paper feed direction, and the horizontal direction is perpendicular to the paper feed direction. However, when character orientation changes in 90° clockwise-rotation mode, the relationship between vertical and horizontal directions is reversed.
 - In page mode, vertical and horizontal directions are based on the character orientation.
 - When characters are enlarged with different sizes on one line, all the

characters on the line are aligned at the baseline.

- The **ESC !** command can also turn double-width and double-height modes on or off. However, the setting of the last received command is effective.

[Default] n = 0

[Reference] **ESC !**

GS \$ nL nH (*)

[Name] Set absolute vertical print position in page mode

[Format] ASCII GS \$ nL nH
Hex 1D 24 nL nH
Decimal 29 36 nL nH

[Range] $0 \leq nL \leq 255, 0 \leq nH \leq 255$

[Description] • Sets the absolute vertical print starting position for buffer character data in page mode.

- This command sets the absolute print position to $[(nL + nH \times 256) \times (\text{vertical or horizontal motion unit})]$ inches.

[Details] • This command is effective only in page mode.

- If the $[(nL + nH \times 256) \times (\text{vertical or horizontal motion unit})]$ exceeds the specified printing area, this command is ignored.
- The horizontal starting buffer position does not move.
- The reference starting position is that specified by **ESC T**.
- This command operates as follows, depending on the starting position of the printing area specified by **ESC T**:
 - ① When the starting position is set to the upper left or lower right, this command sets the absolute position in the vertical direction.
 - ② When the starting position is set to the upper right or lower left, this command sets the absolute position in the horizontal direction.
- The horizontal and vertical motion unit are specified by **GS P**.
- The **GS P** command can change the horizontal and vertical motion unit. However, the value cannot be less than the minimum horizontal movement amount, and it must be in even units of the minimum horizontal movement amount.

[Reference] **ESC \$, ESC T, ESC W, ESC \, GS P, GS **

GS * x y d1...d(x × y × 8)

[Name] Define downloaded bit image

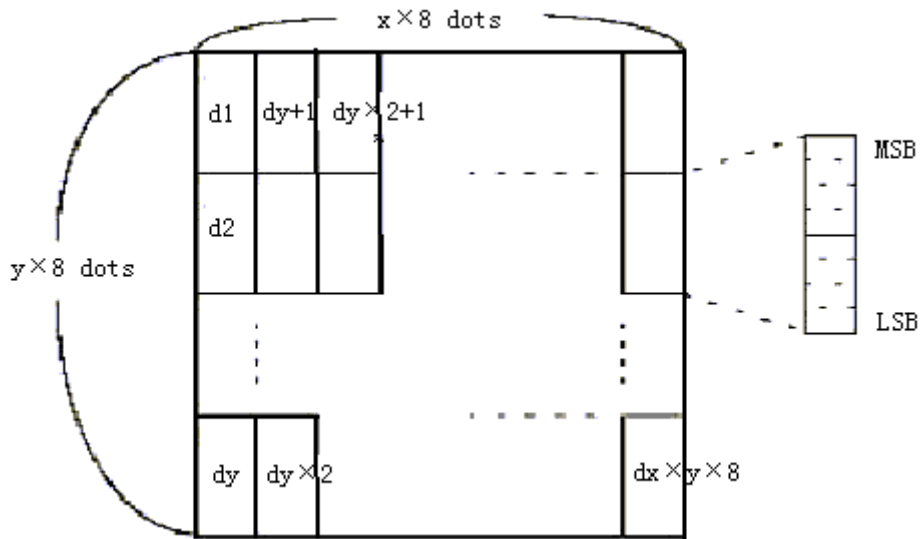
[Format] ASCII GS * x y d1...d(x × y × 8)
Hex 1D 2A x y d1...d(x × y × 8)
Decimal 29 42 x y d1...d(x × y × 8)

[Range] $1 \leq x \leq 255$
 $1 \leq y \leq 48$
 $x \leq y \leq 1536$

$$0 \leq d \leq 255$$

- [Description] Defines a downloaded bit image using the number of dots specified by x and y
- x specifies the number of dots in the horizontal direction.
 - y specifies the number of dots in the vertical direction.

- [Details]
- The number of dots in the horizontal direction is $x \times 8$, in the vertical direction it is $y \times 8$.
 - If $x \times y$ is out of the specified range, this command is disabled.
 - The d indicates bit-image data. Data (d) specifies a bit printed to 1 and not printed to 0.
 - The downloaded bit image definition is cleared when:
 - ① **ESC @** is executed.
 - ② **ESC &** is executed.
 - ③ **FS q** is executed.
 - ④ Printer is reset or the power is turned off.
 - The following figure shows the relationship between the downloaded bit image and the printed data.



[Reference] **GS /**

GS / m

[Name] Print downloaded bit image

[Format]

ASCII	GS	/	<i>m</i>
Hex	1D	2F	<i>m</i>
Decimal	29	47	<i>m</i>

[Range] $0 \leq m \leq 3, 48 \leq m \leq 51$

[Description] Prints a downloaded bit image using the mode specified by m .
 m selects a mode from the table below:

<i>m</i>	Mode	Vertical Dot Density (DPI)	Horizontal Dot Density (DPI)
0, 48	Normal	200	200
1, 49	Double-width	200	100
2, 50	Double-height	100	200
3, 51	Quadruple	100	100

- [Details]
- This command is ignored if a downloaded bit image has not been defined.
 - In standard mode, this command is effective only when there is no data in the

print buffer.

- This command has no effect in the print modes (emphasized, double-strike, underline, character size, or white/black reverse printing), except for upsidedownprinting mode.
- If the downloaded bit-image to be printed exceeds the printable area, the excess data is not printed.
- Refer to Figure 3.12.3 for the downloaded bit image development position in page mode.
- If the printing area width set by **GS L** and **GS W** is less than one line in vertical, the following processing is performed only on the line in question:
 - ① The printing area width is extended to the right up to one line in vertical. In this case, printing does not exceed the printable area.
 - ② If the printing area width cannot be extended by one line in vertical, the left margin is reduced to accommodate one line in vertical.

[Reference] **GS ***

GS : (*)

[Name] Start/end macro definition

[Format] ASCII GS :

Hex 1D 3A

Decimal 29 58

[Description] Starts or ends macro definition.

- [Details]
- Macro definition starts when this command is received during normal operation. Macro definition ends when this command is received during macro definition.
 - When **GS ^** is received during macro definition, the printer ends macro definition and clears the definition.
 - Macro is not defined when the power is turned on.
 - The defined contents of the macro are not cleared by **ESC @**. Therefore, **ESC @** can be included in the contents of the macro definition.
 - If the printer receives **GS :** again immediately after previously receiving **GS :** the printer remains in the macro undefined state.
 - The contents of the macro can be defined up to 2048 bytes. If the macro definition exceed 2048 bytes, excess data is not stored.

[Reference] **GS ^**

GS B n (*)

[Name] Turn white/black reverse printing mode

[Format] ASCII GS B n

Hex 1D 42 n

Decimal 29 66 n

[Range] $0 \leq n \leq 255$

[Description] Turns on or off white/black reverse printing mode.

- When the LSB of n is 0, white/black reverse mode is turned off.
- When the LSB of n is 1, white/black reverse mode is turned on.

- [Details]
- Only the lowest bit of n is valid.
 - This command is available for built-in characters and user-defined characters.
 - When white/black reverse printing mode is on, it also applied to character spacing set by **ESC SP**.

- This command does not affect bit image, user-defined bit image, bar code, HRI characters, and spacing skipped by **HT**, **ESC \$**, and **ESC **.
- This command does not affect the space between lines.
- White/black reverse mode has a higher priority than underline mode. Even if underline mode is on, it is disabled (but not canceled) when white/black reverse mode is selected.

[Default] n = 0

GS H n

[Name] Select printing position for HRI characters

[Format] ASCII GS H n
 Hex 1D 48 n
 Decimal 29 72 n

[Range] $0 \leq n \leq 3$, $48 \leq n \leq 51$

[Description] Selects the printing position of HRI characters when printing a bar code.

n selects the printing position as follows:

n	Printing position
0, 48	Not printed
1, 49	Above the bar code
2, 50	Below the bar code
3, 51	Both above and below the bar code

- HRI indicates Human Readable Interpretation.

[Details] • HRI characters are printed using the font specified by **GS f**.

[Default] n = 0

[Reference] **GS f**, **GS k**

GS L nL nH

[Name] Set left margin

[Format] ASCII GS L nL nH
 Hex 1D 4C nL nH
 Decimal 29 76 nL nH

[Range] $0 \leq nL \leq 255$

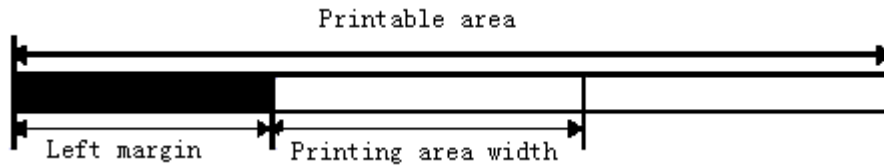
$0 \leq nH \leq 255$

[Description] Sets the left margin using nL and nH.

- The left margin is set to $[(nL + nH \times 256) \times \text{horizontal motion unit}]$ inches.
Printable area

Left margin Printing area width

- [Details]
- This command is effective only processed at the beginning of the line in standard mode.
 - If this command is input in page mode, the printer performs only internal flag operations.
 - This command does not affect printing in page mode.
 - If the setting exceeds the printable area, the maximum value of the printable area is used.
 - The horizontal and vertical motion units are specified by **GS P**. Changing the horizontal and vertical motion unit does not affect the current left margin.
 - The horizontal motion unit (x) is used for calculating the left margin. The calculated result is truncated to the minimum value of the mechanical pitch.



[Default] $nL = 0, nH = 0$

[Reference] **GS P, GS W**

GS P x y (*)

[Name] Set horizontal and vertical motion units

[Format] ASCII GS P x y
 Hex 1D 50 x y
 Decimal 29 80 x y

[Range] $0 \leq x \leq 255$
 $0 \leq y \leq 255$

[Description] Sets the horizontal and vertical motion units to approximately 25.4/ x mm { 1/ x inches} and approximately 25.4/ y mm {1/ y inches}, respectively.
 When x and y are set to 0, the default setting of each value is used.

- [Details]
- The horizontal direction is perpendicular to the paper feed direction and the vertical direction is the paper feed direction.
 - In standard mode, the following commands use x or y, regardless of character rotation (upside-down or 90° clockwise rotation):
 - ① Commands using x: **ESC SP, ESC \$, ESC \, FS S, GS L, GS W**
 - ② Commands using y: **ESC 3, ESC J, GS V**
 - In page mode, the following command use x or y, depending on character orientation:
 - ① When the print starting position is set to the upper left or lower right of the printing area using **ESC T** (data is buffered in the direction perpendicular to the paper feed direction):
 - Commands using x: **ESC SP, ESC \$, ESC W, ESC \, FS S**
 - Commands using y: **ESC 3, ESC J, ESC W, GS \$, GS \, GS V**
 - ② When the print starting position is set to the upper right or lower left of the printing area using **ESC T** (data is buffered in the paper feed direction):
 - Commands using x: **ESC 3, ESC J, ESC W, GS \$, GS **
 - Commands using y: **ESC SP, ESC \$, ESC W, ESC \, FS S, GS V**
 - The command does not affect the previously specified values.
 - The calculated result from combining this command with others is truncated to the minimum value of the mechanical pitch.

[Default] $x = 180, y = 360$

[Reference] **ESC SP, ESC \$, ESC 3, ESC J, ESC W, ESC \, GS \$, GS L, GS V, GS W, GS **

① GS V m ② GS V m n

[Name] Select cut mode and cut paper

[Format] ① ASCII GS V m

Hex	1D	56	<i>m</i>
Decimal	29	86	<i>m</i>
②ASCII	GS	V	<i>m n</i>
Hex	1D	56	<i>m n</i>
Decimal	29	86	<i>m n</i>

[Range] ① $m=1,49$

② $m = 66, 0 \leq n \leq 255$

[Description] Selects a mode for cutting paper and executes paper cutting. The value of *m* selects the mode as follows:

<i>m</i>	Print mode
0, 1, 49	Partial cut (one point left uncut)
66	Feeds paper (cutting position + [$n \times$ (vertical motion unit)]), and cuts the paper partially (one point left uncut).

[Details for ① and ②]

- This command is effective only processed at the beginning of a line.

[Details for ①] • Only the partial cut is available; there is no full cut.

[Details for ②] • When $n = 0$, the printer feeds the paper to the cutting position and cuts it.

- When $n = 0$, the printer feeds the paper to (cutting position + [$n \times$ vertical motion unit]) and cuts it.

- The horizontal and vertical motion unit are specified by **GS P**.

- The paper feed amount is calculated using the vertical motion unit (*y*). However, the value cannot be less than the minimum horizontal movement amount, and it must be in even units of the minimum horizontal movement amount.

GS W nL nH

[Name] Set printing area width

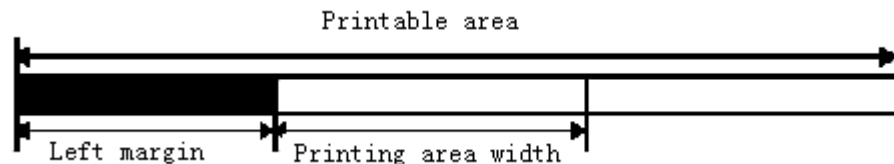
[Format] ASCII GS W nL nH
Hex 1D 57 nL nH
Decimal 29 87 nL nH

[Range] $0 \leq nL \leq 255$

$0 \leq nH \leq 255$

[Description] Sets the printing area width to the area specified by *nL* and *nH*.

- The printing area width is set to [($nL + nH \times 256$) \times horizontal motion unit] inches.



[Details]

- This command is effective only processed at the beginning of the line.
- In page mode, the printer performs only internal flag operations.
- This command does not affect printing in page mode.
- If the [left margin + printing area width] exceeds the printable area, [printable area width - left margin] is used.
- The horizontal and vertical motion units are specified by **GS P**. Changing the

- horizontal and vertical motion units does not affect the current left margin.
- The horizontal motion unit (x) is used for calculating the printing area width. The calculated result is truncated to the minimum value of the mechanical pitch.
 - If the width set for the printing area is less than the width of one character, when the character data is developed, the following processing is performed:
 - ① The printing area width is extended to the right to accommodate one character.
 - ② If the printing area width cannot be extended sufficiently, the left margin is reduced to accommodate one character.
 - ③ If the printing area width cannot be extended sufficiently, the right space is reduced.
 - If the width set for the printing area is less than one line in vertical, the following processing is performed only on the line in question when data other than character data (e.g., bit image, user-defined bit image) is developed:
 - ① The printing area width is extended to the right to accommodate one line in vertical for the bit image within the printable area.
 - ② If the printing area width cannot be extended sufficiently, the left margin is reduced to accommodate one line in vertical.
 - The commands which set the printing area width for bit image printing and its minimum widths are as follows:
 - Bit image (**ESC ***):
 - Single density mode = 2 dots
 - Double density mode = 1 dot
 - Downloaded bit image (**GS /**):
 - Double width mode or Quadruple mode = 2 dots
 - Normal mode or Double-height mode = 1 dot
 - NV bit image (**FS p**):
 - Double width mode or Quadruple mode = 2 dots
 - Normal mode or Double-height mode = 1 dot
 - Raster bit image (**GS r 0**):
 - Double width mode or Quadruple mode = 2 dots
 - Normal mode or Double-height mode = 1 dot

[Default] $nL = 0, nH = 2$

For 58mm paper width model; $nL = 104, nH = 1$

[Reference] **GS L, GS P**

GS \ nL nH

[Name] Set relative vertical print position in page mode

[Format]	ASCII	GS	\	nL	nH
	Hex	1D	5C	nL	nH
	Decimal	29	92	nL	nH

[Range] $0 \leq nL \leq 255$

$0 \leq nH \leq 255$

[Description] Sets the relative vertical print starting position from the current position in page mode.

- This command sets the distance from the current position to $[(nL + nH \times 256) \times \text{vertical or horizontal motion unit}]$.

[Details] • This command is ignored unless page mode is selected.

- When pitch N is specified to the movement downward:

$$nL + nH \times 256 = N$$

When pitch N is specified to the movement upward (the negative direction), use the complement of 65536.

When pitch N is specified to the movement upward:

$$nL + nH \times 256 = 65536 - N$$

- Any setting that exceeds the specified printing area is ignored.
- This command function as follows, depending on the print starting position set by **ESC T**:
When the starting position is set to the upper left or lower right of the printing, the

vertical

motion unit (y) is used.

When the starting position is set to the upper right or lower left of the printing area, the horizontal motion unit (x) is used.

- The horizontal and vertical motion unit are specified by **GS P**.
- The **GS P** command can change the horizontal (and vertical) motion unit. However, the value cannot be less than the minimum horizontal movement amount, and it must be in even units of the minimum horizontal movement amount.

[Reference] **ESC \$, ESC T, ESC W, ESC \, GS \$, GS P**

GS ^ r t m (*)

[Name] Execute macro

[Format] ASCII GS ^ r t m
Hex 1D 5E r t m
Decimal 29 94 r t m

[Range] $0 \leq r \leq 255$
 $0 \leq t \leq 255$
 $m = 0, 1$

[Description] Executes a macro.

- r specifies the number of times to execute the macro.
- t specifies the waiting time for executing the macro.
- m specifies macro executing mode.

When the LSB of $m = 0$:

The macro executes r times continuously at the interval specified by t .

When the LSB of $m = 1$:

After waiting for the period specified by t , the PAPER OUT LED indicators blink and the printer waits for the FEED button to be pressed. After the button is pressed, the printer executes the macro once. The printer repeats the operation r times.

- [Details]
- The waiting time is $t \times 100$ ms for every macro execution.
 - If this command is received while a macro is being defined, the macro definition is aborted and the definition is cleared.
 - If the macro is not defined or if r is 0, nothing is executed.
 - When the macro is executed ($m = 1$), paper always cannot be fed by using the FEED button.

[Reference] **GS :**

GS a n (*)

[Name] Enable/Disable Automatic Status Back (ASB)

[Format] ASCII GS a *n*
 Hex 1D 61 *n*
 Decimal 29 97 *n*

[Range] $0 \leq n \leq 255$

[Description] Enables or disables ASB and specifies the status items to include, using *n* as follows:

Bit	Off/On	Hex	Decimal	Status for ASB
0	Off	00	0	Drawer kick-out connector pin 3 status disabled.
	On	01	1	Drawer kick-out connector pin 3 status enabled.
1	-	-	-	Undefined.
2	Off	00	0	Error status disabled.
	On	04	4	Error status enabled.
3	Off	00	0	Paper roll sensor status disabled.
	On	08	8	Paper roll sensor status enabled.
4-7	-	-	-	Undefined.

[Details] when

- If any of the status items in the table above are enabled, the printer transmits the status when

this command is executed. The printer automatically transmits the status whenever the enabled status item changes. The disabled status items may change, in this case, because each status transmission represents the current status.

- If all status items are disabled, the ASB function is also disabled.
- If the ASB is enabled as a default, the printer transmits the status when the printer data reception and transmission is possible at the first time from when the printer is turned on.
- The following four status bytes are transmitted without confirming whether the host is

ready to

receive data. The four status bytes must be consecutive, except for the XOFF code.

- Since this command is executed after the data is processed in the receive buffer, there may be a time lag between data reception and status transmission.
- When the printer is disabled by **ESC =** (Select peripheral device), the four status bytes are transmitted whenever the status changes.
- When using **DLE EOT**, **GS I**, or **GS r**, the status transmitted by these commands and ASB status must be differentiated, according to the procedure in Appendix G, *Transmission Status Identification*.

GS f n (*)

[Name] Select font for Human Readable Interpretation (HRI) characters

[Format] ASCII GS f *n*
 Hex 1D 66 *n*
 Decimal 29 102 *n*

[Range] $n = 0, 1, 48, 49$

[Description] Selects a font for the HRI characters used when printing a bar code.

n selects a font from the following table:

<i>n</i>	Font
0, 48	Font A (12 · 24)
1, 49	Font B (9 · 17)

[Details] . HRI indicates Human Readable Interpretation.
. HRI characters are printed at the position specified by **GS H**.

[Default] $n = 0$

[Reference] **GS H, GS k**

GS h n

[Name] Select bar code height

[Format] ASCII GS h n
Hex 1D 68 n
Decimal 29 104 n

[Range] $1 \leq n \leq 255$

[Description] Selects the height of the bar code.
n specifies the number of dots in the vertical direction.

[Default] $n = 162$

[Reference] **GS k**

①GS k m d1...dk NUL ②GS k m n d1..dn

[Name] Print bar code

[Format] ① ASCII GS k *m* *d1...dk* NUL
Hex 1D 6B *m* *d1...dk* 00
Decimal 29 107 *m* *d1...dk* 0
② ASCII GS k *m* *n* *d1...dn*
Hex 1D 6B *m* *n* *d1...dn*
Decimal 29 107 *m* *n* *d1...dn*

[Range] ① $0 \leq m \leq 6$ (*k* and *d* depends on the bar code system used)
② $65 \leq m \leq 73$ (*n* and *d* depends on the bar code system used)

[Description] Selects a bar code system and prints the bar code.
m selects a bar code system as follows:

<i>m</i>	Bar Code System	Number of Characters	Remarks	
①	0	UPC-A	$11 \leq k \leq 12$	$48 \leq d \leq 57$
	1	UPC-E	$11 \leq k \leq 12$	$48 \leq d \leq 57$
	2	JAN13 (EAN13)	$12 \leq k \leq 13$	$48 \leq d \leq 57$
	3	JAN8 (EAN8)	$7 \leq k \leq 8$	$48 \leq d \leq 57$
	4	CODE39	$1 \leq K \leq 255$	$45 \leq d \leq 57$, $65 \leq d \leq 90$, <i>d</i> = 32, 36, 37, 43, 45, 46, 47 <i>d</i> = 42
	5	ITF	$1 \leq k \leq 255$ (even number)	$48 \leq d \leq 57$

	6	CODABAR	$1 \leq k \leq 255$	$48 \leq d \leq 57$, $65 \leq d \leq 68$, $d = 36, 43, 45, 46,$ $47, 58$
②	65	UPC-A	$11 \leq n \leq 12$	$48 \leq d \leq 57$
	66	UPC-E	$11 \leq n \leq 12$	$48 \leq d \leq 57$
	67	JAN13 (EAN13)	$12 \leq n \leq 13$	$48 \leq d \leq 57$
	68	JAN8 (EAN8)	$7 \leq n \leq 8$	$48 \leq d \leq 57$
	69	CODE39	$1 \leq n \leq 255$	$45 \leq d \leq 57$, $65 \leq d \leq 90$, $d = 32, 36, 37, 43, 45,$ $46, 47$ $d = 42$
	70	ITF	$1 \leq n \leq 255$ (even number)	$48 \leq d \leq 57$
	71	CODABAR	$1 \leq n \leq 255$	$48 \leq d \leq 57$, $65 \leq d \leq 68$, $d = 36, 43, 45, 46,$ $47, 58$
	72	CODE93	$1 \leq n \leq 255$	$0 \leq d \leq 127$
	73	CODE128	$2 \leq n \leq 255$	$0 \leq d \leq 127$

[Details for ①]

- . This command ends with a NUL code.
- . When the bar code system used is UPC-A or UPC-E, the printer prints the bar code data

after

receiving 12 bytes bar code data and processes the following data as normal data.

- . When the bar code system used is JAN13 (EAN13), the printer prints the bar code after receiving 13 bytes bar code data and processes the following data as normal data.
- . When the bar code system used is JAN8 (EAN8), the printer prints the bar code after receiving 8 bytes bar code data and processes the following data as normal data.

- . The number of data for ITF bar code must be even numbers. When an odd number of

data

is input, the printer ignores the last received data.

[Details for ②]

- . n indicates the number of bar code data, and the printer processes n bytes from the next character data as bar code data.

- . If n is outside of the specified range, the printer stops command processing and

processes

the following data as normal data.

[Details in standard mode]

- . If d is outside of the specified range, the printer only feeds paper and processes the

following

data as normal data.

- . If the horizontal size exceeds printing area, the printer only feeds the paper.

- . This command feeds as much paper as is required to print the bar code, regardless of

the

line spacing specified by **ESC 2** or **ESC 3**.

. This command is enabled only when no data exists in the print buffer. When data exists in

the print buffer, the printer processes the data following *m* as normal data.

. After printing bar code, this command sets the print position to the beginning of the line.

. This command is not affected by print modes (emphasized, double-strike, underline, character size, white/black reverse printing, or 90° rotated character, etc.), except for upside-down printing mode.

[Details in page mode]

. This command develops bar code data in the print buffer, but does not print it. After processing bar code data, this command moves the print position to the right side dot of

the

bar code.

. If *d* is out of the specified range, the printer stops command processing and processes

the

following data as normal data. In this case the data buffer position does not change.

. If bar code width exceeds the printing area, the printer does not print the bar code but

moves

the data buffer position to the left side out of the printing area.

When CODE93 (*m* = 72) is used:

. The printer prints an HRI character () as start character at the beginning of the HRI character string.

. The printer prints an HRI character () as a stop character at the end of the HRI character string.

. The printer prints HRI characters (+ an alphabetic character) as a control character (<00>H to <1F>H and <7F>H):

GS r n (*)

[Name] Transmit status

[Format] ASCII GS r n

Hex 1D 72 n

Decimal 29 114 n

[Range] n = 1, 2, 49, 50

[Description] Transmits the status specified by *n* as follows:

n	Function
1, 49	Transmits paper sensor status
2, 50	Transmits drawer kick-out connector status

[Details] . When using a serial interface

When DTR/DSR control is selected, the printer transmits only 1 byte after confirming the host is ready to receive data (DSR signal is SPACE). If the host computer is not ready to receive data (DSR signal is MARK), the printer waits until the host is ready.

When XON/XOFF control is selected, the printer transmits only 1 byte without confirming the condition of the DSR signal.

- . This command is executed when the data in the receive buffer is developed. Therefore, there may be a time lag between receiving this command and transmitting the status, depending on the receive buffer status.
- . When Auto Status Back (ASB) is enabled using **GS a**, the status transmitted by **GS r** and the ASB status must be differentiated using the table in Appendix G.
- . The status types to be transmitted are shown below:

Paper sensor status ($n = 1, 49$):

Bit	Off/On	Hex	Decimal	Status for ASB
0,1	Off	00	0	Paper roll near-end sensor: paper adequate.
	On	03	3	Paper roll near-end sensor: paper near end.
2,3	Off	00	0	Paper roll end sensor: paper adequate.
	On	0C	12	Paper roll near-end sensor: paper near end.
4	Off	00	0	Not used. Fixed to Off.
5,6	-	-	-	Undefined.
7	Off	00	0	Not used. Fixed to Off.

Bits 2 and 3: When the paper end sensor detects a paper end, the printer goes offline and does not execute this command. Therefore, bits 2 and 3 do not transmit the status of paper end.

Bit	Off/On	Hex	Decimal	Status for ASB
0	Off	00	0	Drawer kick-out connector pin 3 is LOW.
	On	01	1	Paper roll near-end sensor: paper near end.
1-3	-	-	-	Undefined.
4	Off	00	0	Not used. Fixed to Off.
5,6	-	-	-	Undefined.
7	Off	00	0	Not used. Fixed to Off.

GS v 0 m xL xH yL yH d1....dk

[Name] Print raster bit image

[Format] ASCII GS v 0 m xL xH yL yH d1...dk
Hex 1D 76 30 m xL xH yL yH d1...dk
Decimal 29 118 48 m xL xH yL yH d1...dk

[Range] $0 \leq m \leq 3, 48 \leq m \leq 51$

$0 \leq xL \leq 255$

$0 \leq xH \leq 255$

$0 \leq yL \leq 255$

$0 \leq d \leq 255$

$k = (xL + xH \times 256) \times (yL + yH \times 256) (k \neq 0)$

[Description] Selects Raster bit-image mode. The value of m selects the mode, as follows:

m	Mode	Vertical Dot Density	Horizontal Dot density
0, 48	Normal	200 DPI	200 DPI
1, 49	Double-width	200 DPI	100 DPI
2, 50	Double-height	100 DPI	200 DPI
3, 51	Quadruple	100 DPI	100 DPI

- xL, xH, select the number of data bits ($xL + xH \times 256$) in the horizontal direction for the bit image.

- yL, yH, select the number of data bits (yL+ yH×256) in the vertical direction for the bit image.
- [Details]
- In standard mode, this command is effective only when there is no data in the print buffer.
 - This command has no effect in all print modes (character size, emphasized, double-strike, upside-down, underline, white/black reverse printing, etc.) for raster bit image.
 - If the printing area width set by **GS L** and **GS W** is less than the minimum width, the printing area is extended to the minimum width only on the line in question. The minimum width means 1 dot in normal (m=0, 48) and double-height (m=2, 50), 2 dots in double-width (m=1, 49) and quadruple (m=3, 51) modes.
 - Data outside the printing area is read in and discarded on a dot-by-dot basis.
 - The position at which subsequent characters are to be printed for raster bit image is specified by **HT** (Horizontal Tab), **ESC \$** (Set absolute print position), **ESC ** (Set relative print position), and **GS L** (Set left margin). If the position at which subsequent characters are to be printed is not a multiple of 8, print speed may decline.
 - The **ESC a** (Select justification) setting is also effective on raster bit images.
 - When this command is received during macro definition, the printer ends macro definition, and begins performing this command. The definition of this command should be cleared.
 - d indicates the bit-image data. Set time a bit to 1 prints a dot and setting it to 0 does not print a dot.

GS w n

[Name] Set bar code width

[Format] ASCII GS w n
 Hex 1D 77 n
 Decimal 29 119 n

[Range] 2 ≤ n ≤ 6

[Description] Set the horizontal size of the bar code.

n specifies the bar code width as follows:

n	Module Width (mm) for Multi-level Bar Code	Binary-level bar codes	
		Thin element width (mm)	Thick element width (mm)
2	0.25	0.25	0.625
3	0.375	0.375	1.0
4	0.5	0.5	1.25
5	0.625	0.625	1.625
6	0.75	0.75	1.875

. Multi-level bar codes are as follows:

UPC-A, UPC-E, JAN13 (EAN13), JAN8 (EAN8), CODE93, CODE128

. Binary-level bar codes are as follows:

CODE39, ITF, CODABAR

[Default] n = 3

[Reference] **GS k**

FS ! n

[Name] Set print mode(s) for Kanji characters

[Format] ASCII FS ! n
Hex 1C 21 n
Decimal 28 33 n

[Range] $0 \leq n \leq 255$

[Description] Sets the print mode for Kanji characters, using n as follows:

Bit	Off/On	Hex	Decimal	Function
0	-	-	-	Undefined.
1	-	-	-	Undefined.
2	Off	00	0	Double-width mode is OFF.
	On	04	4	Double-width mode is ON.
3	Off	00	.	Double-height mode is OFF.
	On	08	8	Double-height mode is ON.
4	-	-	-	Undefined.
5	-	-	-	Undefined.
6	-	-	-	Undefined.
7	Off	00	0	Underline mode is OFF.
	On	80	128	Underline mode is ON.

[Details]

- When both double-width and double-height modes are set (including right- and left-side character spacing), quadruple-size characters are printed.
- The printer can underline all characters (including right- and left-side character spacing), but cannot underline the space set by **HT** and 90° clockwise-rotated characters.
- The thickness of the underline is that specified by **FS̃**, regardless of the character size.
- When some of the characters in a line are double or more height, all the characters on the line are aligned at the baseline.
- It is possible to emphasize the Kanji character using **FS W** or **GS !**, the setting of the last received command is effective.
- It is possible to turn under line mode on or off using **FS̃**, and the setting of the last received command is effective.

[Default] $n = 0$

[Reference] **FS -**, **FS W**, **GS !**

FS &

[Name] Select Kanji character mode

[Format] ASCII FS &
Hex 1C 26
Decimal 28 38

[Description] Selects Kanji character mode.

[Reference] **FS .**, **FS C**

FS - n

[Name] Turn underline mode on/off for Kanji characters

[Format] ASCII FS - *n*
Hex 1C 2D *n*
Decimal 28 45 *n*

[Range] $0 \leq n \leq 2, 48 \leq n \leq 50$

[Description] Turns underline mode for Kanji characters on or off, based on the following values of *n*.

<i>n</i>	Function
0, 48	Turns off underline mode for Kanji characters
1, 49	Turns on underline mode for Kanji characters (1-dot thick)
2, 50	Turns on underline mode for Kanji characters (2-dot thick)

- [Details]
- The printer can underline all characters (including right- and left-side character spacing), but cannot underline the space set by **HT** and 90° clockwise-rotated characters.
 - After the underline mode for Kanji characters is turned off by setting *n* to 0, underline printing is no longer performed, but the previously specified underline thickness is not changed. The default underline thickness is 1 dot.
 - The specified line thickness does not change even when the character size changes.
 - It is possible to turn underline mode on or off using **FS !**, and the last received command is effective.

[Default] *n* = 0

[Reference] **FS !**

FS .

[Name] Cancel Kanji character mode

[Format] ASCII FS .
Hex 1C 2E
Decimal 28 46

[Description] Cancels Kanji character mode.

[Reference] **FS &**, **FS C**

FS 2 c1 c2 d1...dk

[Name] Define user-defined Kanji characters

[Format] ASCII FS 2 *c1 c2 d1...dk*
Hex 1C 32 *c1 c2 d1...dk*
Decimal 28 50 *c1 c2 d1...dk*

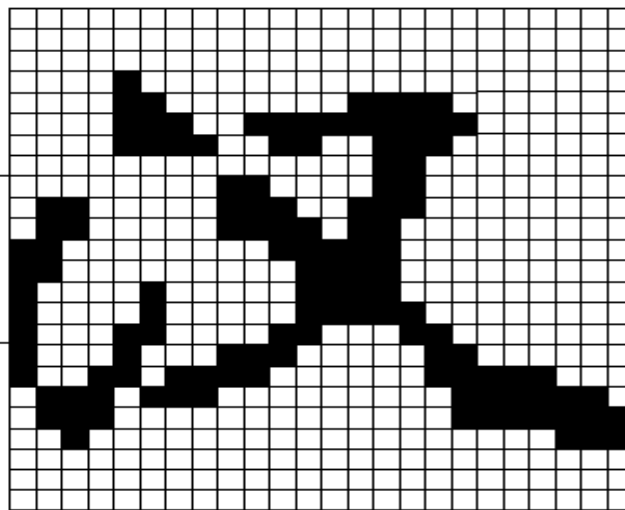
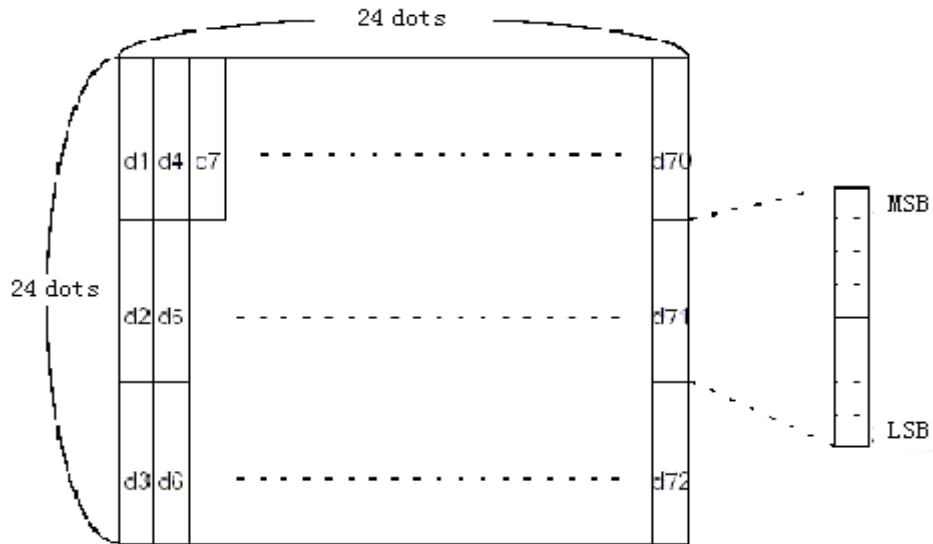
[Range] *c1* and *c2* indicate character codes for the defined characters. The range of values for *c1* and *c2* differ depending on the character code system used.

Model type	<i>c1</i>	<i>c2</i>
Japanese Kanji ZJporting model (JIS code system)	<i>c1</i> = 77H	21H ≤ <i>c2</i> ≤ 7EH
Japanese Kanji ZJporting model (SHIFT-JIS code system)	<i>c1</i> = ECH	40H ≤ <i>c2</i> ≤ 7EH 80H ≤ <i>c2</i> ≤ 9EH
Chinese Kanji ZJporting model	<i>c1</i> = FEH	A1H ≤ <i>c2</i> ≤ FEH
Taiwanese Kanji ZJporting model	<i>c1</i> = FEH	A1H ≤ <i>c2</i> ≤ FEH

$0 \leq d \leq 255$

$k = 72$

- [Description] Defines user-defined Kanji characters for the character codes specified by $c1$ and $c2$.
- [Details]
 - $c1$ and $c2$ indicate character codes for the defined characters. $c1$ specifies for the first byte, and $c2$ for the second byte.
 - d indicates the dot data. Set a corresponding bit to 1 to print a dot or to 0 to not print a dot.
- [Default] All spaces.
- [Reference] **FS C**



D1=00H, D4=00H, D7=00H, D10=00H.
 D2=1FH, D5=78H, D8=80H, D11=00H.
 D3=C0H, D6=30H, D9=38H, D12=70H.

FS S $n1$ $n2$

- [Name] Set left- and right-side Kanji character spacing
- [Format]

ASCII	FS	S		$n1$	$n2$
Hex	1C	53		$n1$	$n2$
Decimal	28	83		$n1$	$n2$
- [Range]
 - $0 \leq n1 \leq 255$
 - $0 \leq n2 \leq 255$
- [Description] Sets left- and right-side Kanji character spacing $n1$ and $n2$, respectively.

- When the printer model used ZJports **GS P**, the left-side character spacing is [$n1 \times$ horizontal or vertical motion units], and the right-side character spacing is [$n2 \times$ horizontal or vertical motion units].
- When double-width mode is set, the left- and right-side character spacing is twice the normal value.
- The horizontal and vertical motion units are set by **GS P**. The previously specified character spacing does not change, even if the horizontal or vertical motion unit is changed using **GS P**.
- The value cannot be less than the minimum horizontal movement amount, and must be in even units of the minimum horizontal movement amount.
- In standard mode, the horizontal motion unit is used.
- In page mode, the horizontal or vertical motion unit differs in page mode, depending on starting position of the printable area as follows:
 - ① When the starting position is set to the upper left or lower right of the printable area using **ESC T**, the horizontal motion unit (x) is used.
 - ② When the starting position is set to the upper right or lower left of the printable area using **ESC T**, the vertical motion unit (y) is used.
 - ③ The maximum right-side spacing is 255/180 inches for the paper roll and is approximately 35.983 mm {255/150 inches}. Any setting exceeding the maximum is converted to the maximum automatically.

[Default] $n1 = 0, n2 = 0$

[Reference] **GS P**

FS W n

[Name] Turn quadruple-size mode on/off for Kanji characters

[Format]	ASCII	FS	W	n
	Hex	1C	57	n
	Decimal	28	87	n

[Range] $0 \leq n \leq 255$

[Description] Turns quadruple-size mode on or off for Kanji characters.

- When the LSB of n is 0, quadruple-size mode for Kanji characters is turned off.
- When the LSB of n is 1, quadruple-size mode for Kanji characters is turned on.

[Details]

- Only the lowest bit of n is valid.
- In quadruple-size mode, the printer prints the same size characters as when double-width and double-height modes are both turned on.
- When quadruple-size mode is turned off using this command, the following characters are printed in normal size.
- When some of the characters on a line are different in height, all the characters on the line are aligned at the baseline.
- **FS !** or **GS !** can also select and cancel quadruple-size mode by selecting double-height and double-width modes, and the setting of the last received command is effective.

[Default] $n = 0$

[Reference] **FS !, GS !**

FCC ID: RVUZJ-58LYDD

This device complies with Part 15 of the FCC Rules. Operation is subject to the following two conditions: (1) this device may not cause harmful interference, and (2) this device must accept any interference received, including interference that may cause undesired operation.

Changes or modifications not expressly approved by the party responsible for compliance could void the user's authority to operate the equipment.

NOTE: This equipment has been tested and found to comply with the limits for a Class B digital device, pursuant to Part 15 of the FCC Rules. These limits are designed to provide reasonable protection against harmful interference in a residential installation. This equipment generates, uses and can radiate radio frequency energy and, if not installed and used in accordance with the instructions, may cause harmful interference to radio communications. However, there is no guarantee that interference will not occur in a particular installation. If this equipment does cause harmful interference to radio or television reception, which can be determined by turning the equipment off and on, the user is encouraged to try to correct the interference by one or more of the following measures:

- Reorient or relocate the receiving antenna.
- Increase the separation between the equipment and receiver.
- Connect the equipment into an outlet on a circuit different from that to which the receiver is connected.
- Consult the dealer or an experienced radio/TV technician for help.