

X-pointer Manual

(XPG300Y)

Table of Contents

0. CAUTION

1. Composition & Function

2. Installation

3. The Usage of X-pointer

4. Features

5. The Usage of Magic key

6. Specifications

7. Certification & Regulatory Compliance Information

8. Support

9. Warranty

0. CAUTION



LASER RADIATION. DO NOT STARE INTO THE BEAM OR VIEW DIRECTLY WITH OPTICAL INSTRUMENTS. CLASS II LASER PRODUCT.

NEVER POINT A LASER BEAM INTO A PERSON'S EYES OR VIEW A LASER BEAM DIRECTLY, AS PROLONGED EXPOSURE CAN BE HAZARDOUS TO THE EYES.

MOMENTARY EXPOSURE FROM A LASER POINTER, SUCH AS AN INADVERTENT SWEEP OF THE LIGHT ACROSS A PERSON'S EYES, MAY CAUSE TEMPORARY FLASH BLINDNESS SIMILAR TO THE EFFECT OF A CAMERA FLASH BULB. ALTHOUGH THIS CONDITION IS TEMPORARY, IT CAN BECOME MORE DANGEROUS IF THE EXPOSED PERSON IS ENGAGED IN A VISION-CRITICAL ACTIVITY SUCH AS DRIVING.

MODIFICATION OF THIS DEVICE MAY RESULT IN HAZARDOUS RADIATION EXPOSURE. FOR YOUR SAFETY, HAVE THIS EQUIPMENT SERVICED ONLY BY AN CHOISTECHNOLOGY AUTHORIZED SERVICE PROVIDER.

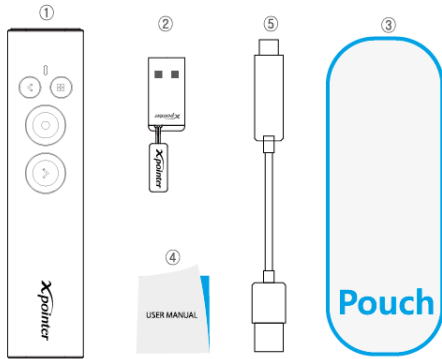
"Notice"

For accidents caused by user's carelessness is not compensation.

Please keep in mind that the below notice.

- 1) Do not stare into laser beam.
- 2) Do not aim the laser at people.
- 3) Keep out of reach of children.
- 4) Any changes or modifications to the controller could void your authority to operate the equipment.
- 5) Do not place the controller in a location where it is subject to direct sunlight or extreme heat.
- 6) If any solid object or liquid falls onto the controller, disconnect it and have it checked by qualified personnel.
- 8) The controller is capable of operation between 10~40°C and storage between -10~50°C.
- 9) Please pay attention not to lose the receiver.

1. Composition & Function

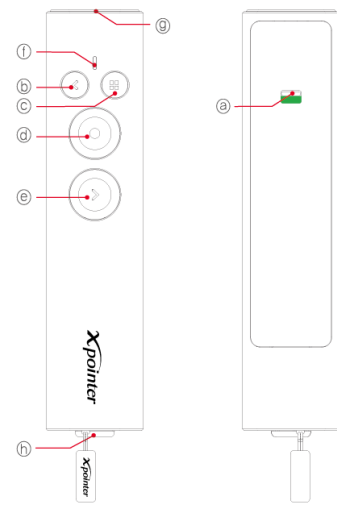


[Composition]

Name	Q'ty
① Transmitter	1EA
② Receiver	1EA
③ Pouch	1ea
④ Manual	1EA
⑤ Charger cable	1EA

[Table1]

Notice : Composition and Function might be changed without warning for upgrading



[Function]

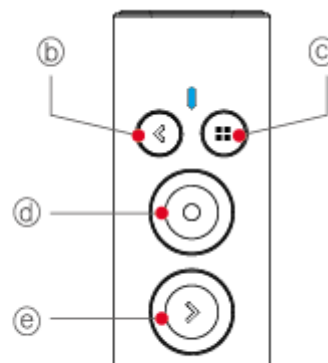
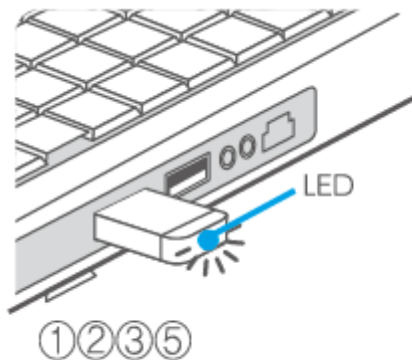
Part	Name	Mode	Function
(a)	MODE		Moving Mouse Pointer and Click
(b)	Left Button		Previous Page / Page Up
(c)	IMAGE POINTER		Switching image pointer style
(d)	Touch mouse		Moving mouse pointer or laser on
(e)	Right Button		Next Page / Page Down
(f)	Transmitter LED		Laser Pointing and Battery Check
(g)	Mode Button		Selecting Keyboard / Mouse Mode
(h)	Power Switch		Power On / Off

2. Installation

- 1) Plug receiver into computer USB port.
- 2) Wait until LED(①) of receiver flickers regularly.
- 3) If LED(①) of receiver flickers, it means that the product is correctly recognized.
- 4) Push slide show, task switch or left, right button of transmitter for more than 2 seconds.

After stop flickering, recognizing is completed.

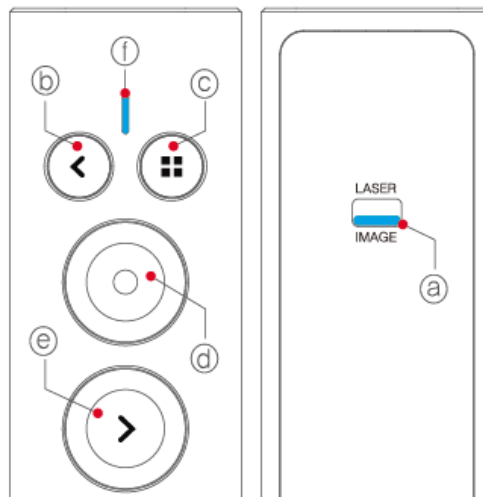
- 5) Open powerpoint and push transmitter's buttons. And then check [table1].
- 6) In case of failure in working [table1], separate receiver from USB port. And insert receiver into USB port again. Repeat the process above.



3. The Usage of X-pointer

1) Presentation operation

- ① Open the presentation file.
- ② Move mode switch(@), and mode will change into "Image pointer mode".
- ③ Run slide show.
- ④ User can give a presentation effectively as they can move pages with left or right button(b,c) of transmitter.



4. Features

1) Magic Key function

Magic key allows user to use X-pointer for any program.

User can give a presentation and also can remote control media player, acrobat reader, photo viewer, winamp, etc.

2) Optical finger mouse

Optical finger mouse has the same functionality as the touchpad of a laptop computer.

Optical finger mouse controls offer greater functionality with delicate mouse control.

3) Drawing a line

Using "Drag&Drop" in mouse mode, user can draw a line in powerpoint.

4) High quality laser

High quality laser modules give you excellent definition and precise pointing.

It applies suitable circuit to Korea, EU, Japan, and America.

5) 2.4GHz Multi Channel

2.4GHz RF technology by GFSK modulation utilizes 76 channels and 65,536 ID's which can reduce the interference from the other RF devices or the other X-pointers.

6) Power sleep mode

If you push laser button for more than 20seconds, it turns off automatically.

In case that transmitter doesn't work for a fixed time (1second), it turns to the power-saving mode.

It prevents the unnecessary loss of the batteries.

5. The Usage of Magic key

X-pointer's function will be changed as user's demands.

User can use X-pointer as a remote control of media player, word, winamp etc.

Key values are saved in X-pointer and you can use anywhere.

1) Magic key program can be downloaded from : <http://www.x-pointer.com>

(Download : Home -> support -> Download)

2) Insert receiver into USB port, and then complete awareness of ID.

3) Start -> Program -> ChoisTechnology -> Magic key.

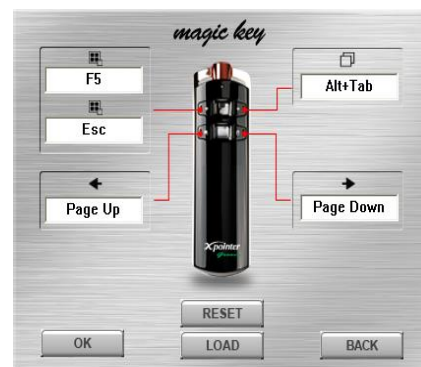
4) Select the item to use on the initial screen and click 'OK'.

5) Enter customized key values in each button and click 'OK'.

6) Key values are saved in receiver and you can use changed function.



[Choice of model]



[Assignment of key]

6. Specifications

1) Transmitter

Frequency Used	2.430~2.460GHz
Channels Used	31 channel
Recognizable ID's	65,536
Operational Distance	Max. 50m(Open Field)
RF Power	less than 10mW
Modulation	GFSK
Operating Temperature	10~40°C
Laser Type	ClassII
Laser Output	less than 1mW
Laser Wavelength (Color)	515nm(GREEN)
Current Consumption	less than 20mA
Number of Button	4 buttons, 1 slide switch
Battery	3.7V Li-polymer Battery
Size	130 X 30 X 13 mm
Weight	47g(with Li-polymer battery)
Hours of Continuous Use	15 hours

2) Receiver

Interface	USB 1.1 / 2.0
Power	5V(USB Power)
Operating System	Windows 2000, XP, Vista, 7, Mac OS X
Consumption Current	less than 23mA
Operating Temperature	-10~50°C
Size	26 X 12 X 4.5 mm
Weight	2g

7. Certification & Regulatory Compliance Information

1) Product Name (Model Name)

Transmitter : XPG300Y

Receiver : XPR-AT2

2) Certification Number

FCC ID : RVBXP300Y

CE 0678

3) Manufacturer / Nation : ChoisTechnology Co., Ltd. / Korea,China

4) Regulatory Compliance

FCC Compliance Statement

FCC Part 15.19

This device complies with part 15 of the FCC Rules.

Operation is subject to the following two conditions :

(1)This device may not cause harmful interference, and

(2)This device must accept any interference received, including interference that may cause undesired operation.

FCC Part 15.21

Any changes or modifications (including the antennas) made to this device that are not expressly approved by the manufacturer may void the user's authority to operate the equipment.

RF Exposure Statement (2.1091)

FCC RF Radiation Exposure Statement : This equipment complies with FCC RF Radiation exposure limits set forth for an uncontrolled environment. This device and its antenna must not be co-located or operating in conjunction with any other antenna or transmitter.

Part 15.105 (B)

Note : This equipment has been tested and found to comply with the limits for a Class B digital device, pursuant to part 15 of the FCC Rules. These limits are designed to provide reasonable protection against harmful interference in a residential installation this equipment generates uses and can radiate radio frequency energy and, if not installed and used in accordance with the instructions, may cause harmful interference to radio communications. However, there is no guarantee that interference will not occur in a particular installation. If this equipment does cause harmful interference to radio or television reception, which can be determined by turning the equipment off and on, the user is encouraged to try to correct the interference by one or more of the following measures :

- Reorient or relocate the receiving antenna.
- Increase these parathion between the equipment and receiver.
- Connect the equipment into an outlet on a circuit different from that to which the receiver is connected.
- Consult the dealer or an experienced radio/TV technician for help.

Changes or modifications not authorized by the party responsible for compliance could void the user's authority to operate this product.

8. Support

If there are some problems or something to improve while using the product, please contact us.

We will consult about it kindly.

E-mail : inquiry@choistec.com

TEL : +82-32-246-3409, FAX : +82-2-6455-3406

Homepage : <http://www.x-pointer.com>

Company Name : ChoisTechnology Co., Ltd.

9. Warranty

ChoisTechnology warrants this product to be free from defects in materials and workmanship for one year. If your ChoisTechnology model is found to be defective within that time, we will promptly repair or replace it. This warranty does not cover problems or damage resulting from unauthorized repair, modification or disassembly.

FCC Warning Statement

FCC Part 15.19

This device complies with part 15 of the FCC Rules. Operation is subject to the following two conditions: (1) this device may not cause harmful interference, and (2) this device must accept any interference received, including interference that may cause undesired operation.

FCC Part 15.21

Any changes or modifications (including the antennas) to this device that are not expressly approved by the manufacturer may void the user's authority to operate the equipment.

FCC Radiation Exposure Statement

This equipment complies with FCC Radiation exposure limits set forth for an uncontrolled environment. This device and its antenna must not be co-located or operating in conjunction with any other antenna or transmitter.

This equipment should be installed and operated with a minimum distance of 20cm between the radiator and your body.