

4

5

6

3

6B

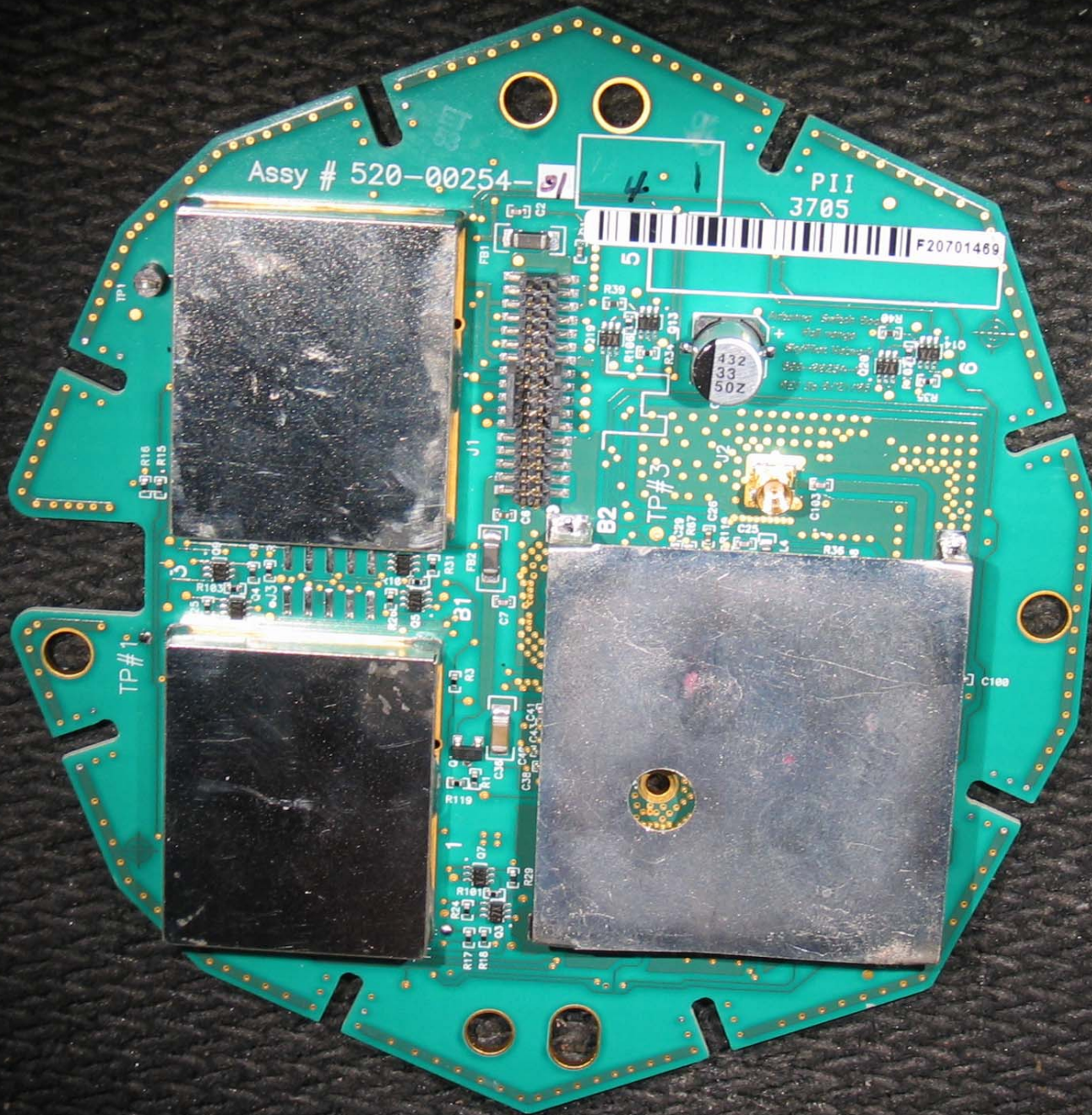
15

7

2

8

1



Assy # 520-00254-5

PII
3705

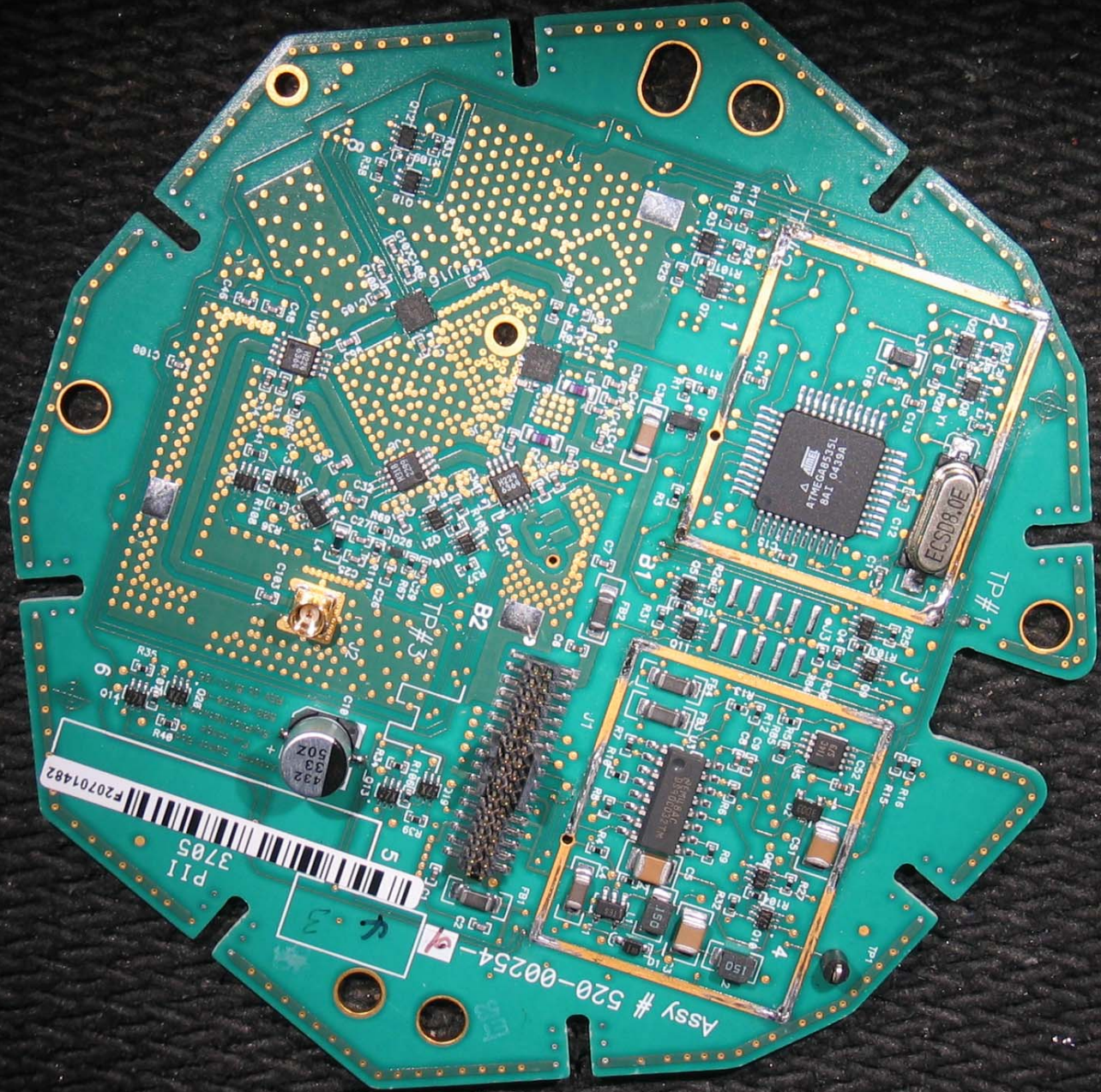
F20701469

432
33
50Z

TP#1

TP#3

C100



P11
3705
F20701482

Assy # 520-00254

ATMC68B53L
8AT 0439D

ECSD8.0E

TP#1

TP#3

B2

TP#4

4

3

