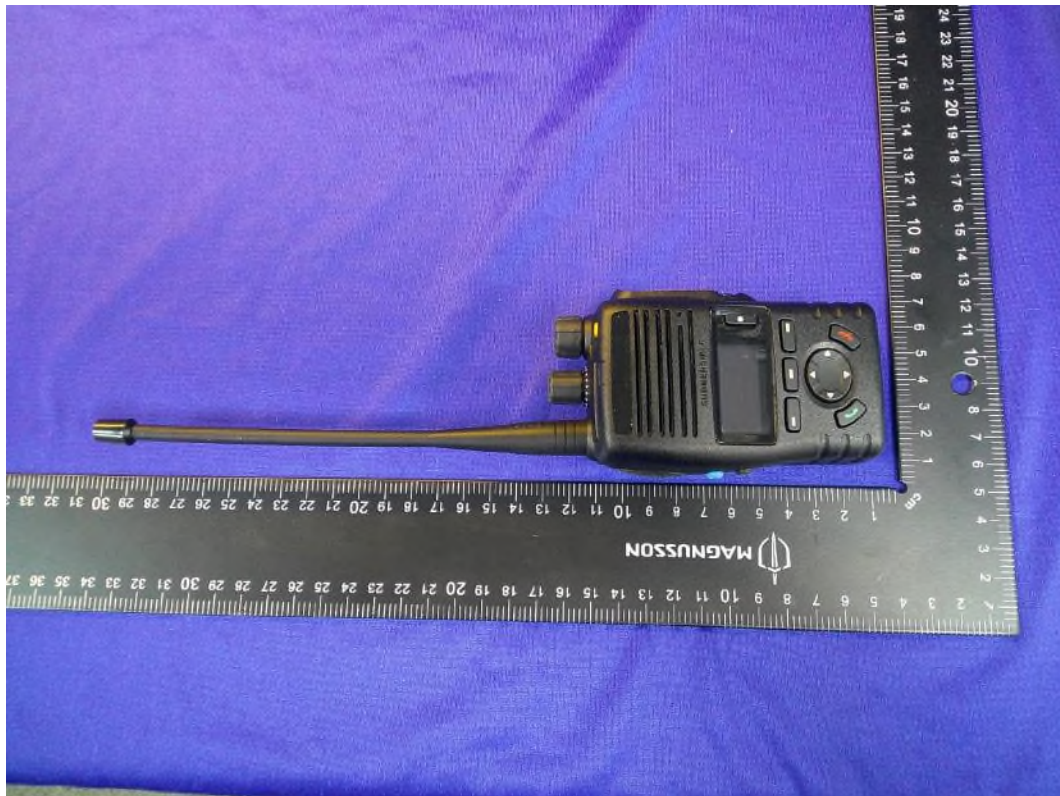
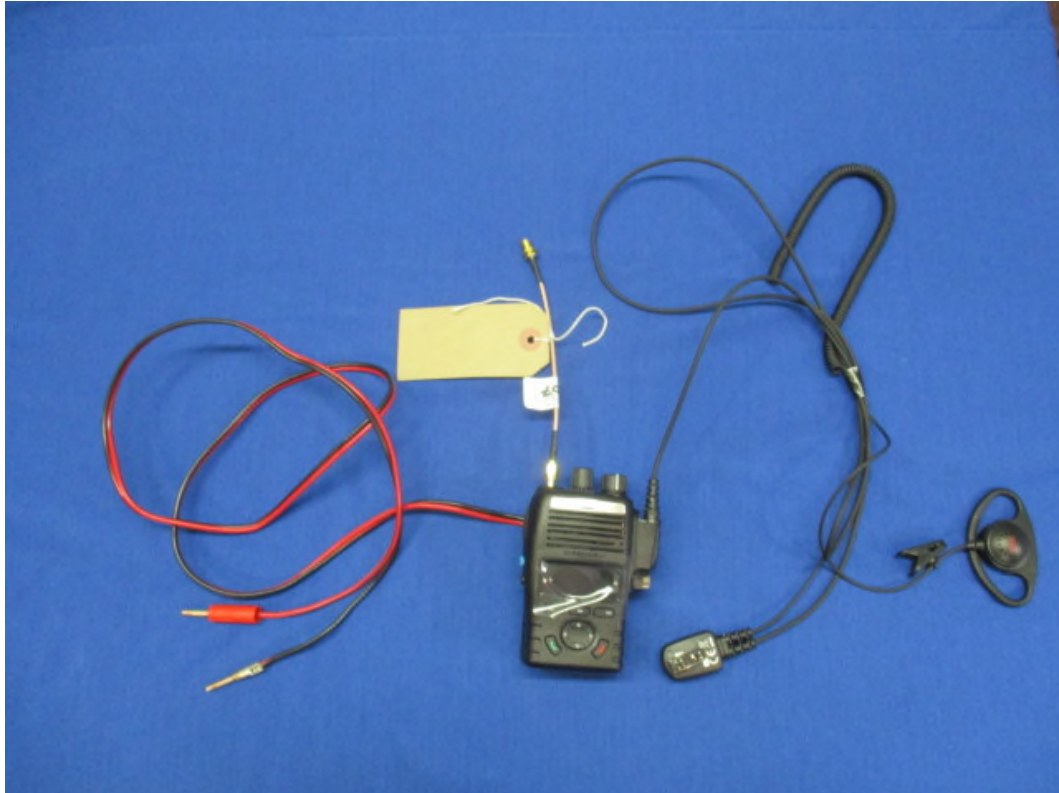


1.1 EUT Front View

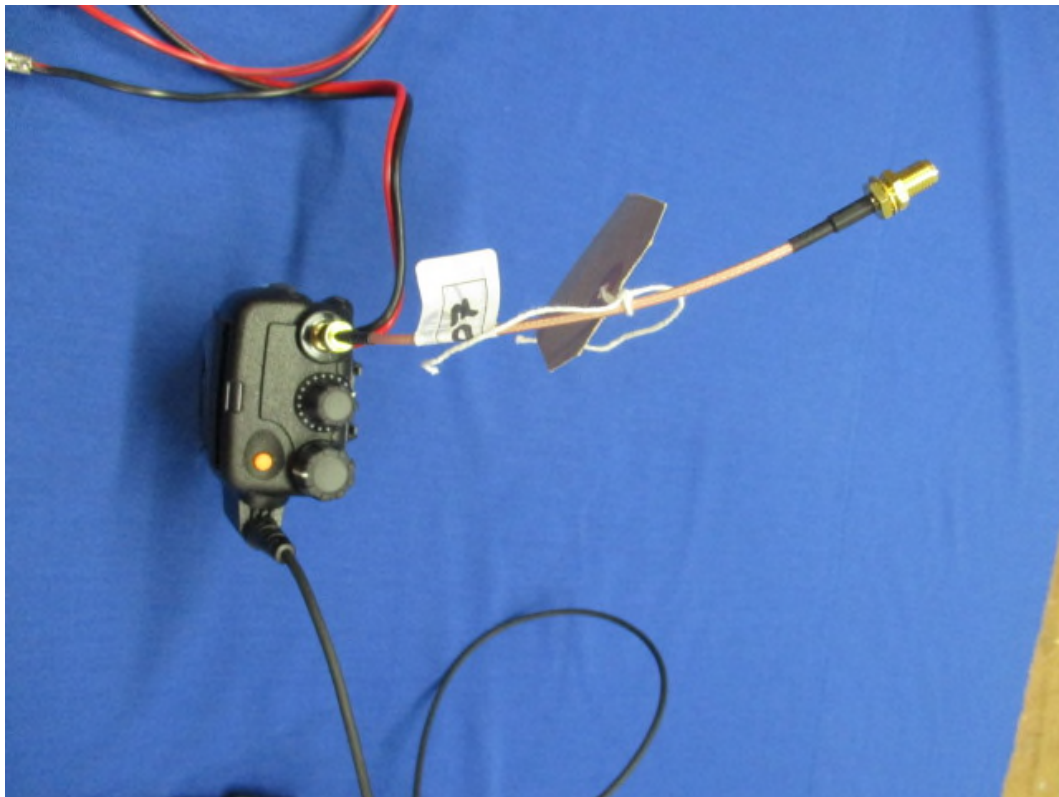


Photograph shows the DX485 model (with display).





Photograph shows the EUT, modified battery pack and 10 cm coax cable.





Photograph shows the DX482 model (without display)



Photograph shows the DX482 model (without display)

1.2 EUT Reverse Angle



DX485 Display version



DX482 Non-Display version

1.3 EUT Left side View



DX485 Display version



DX482 Non-Display version

1.4 EUT Right side View



DX485 Display version



Photograph shows the EUT accessory port and USB port, DX485 Display version



DX482 Non-Display version