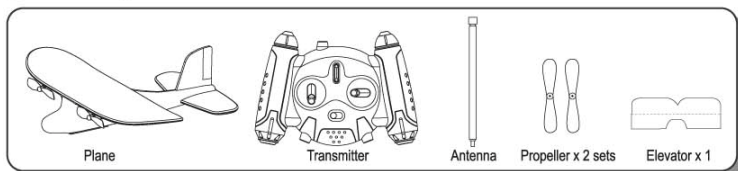




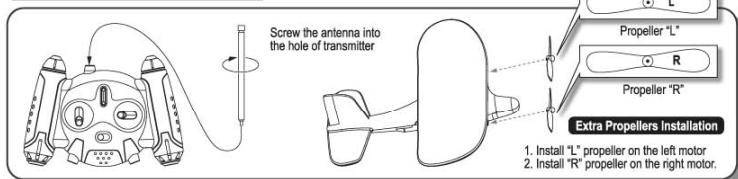
Instruction Manual

ITEM NO. #05081

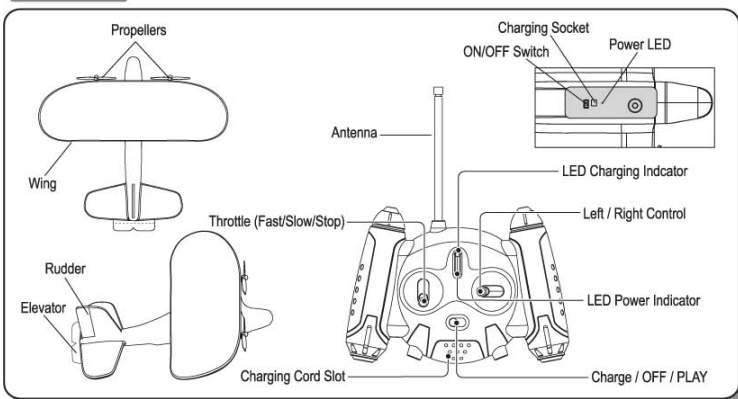
Contents



Transmitter Plane Assembly



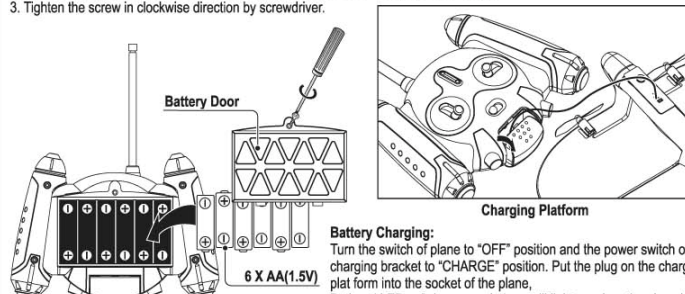
Parts Index



Charger Transmitter Battery Installation

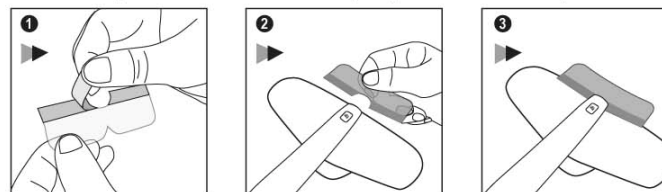
Battery Installation: Transmitter / Charger

1. Unscrew battery door in anti-clockwise direction by screwdriver.
2. Put 6pcs AA alkaline batteries in battery compartment as per the polarity shown inside.
3. Tighten the screw in clockwise direction by screwdriver.



Elevator Installation

Remove the backing sheet and then stick the elevator onto the plane. (as shown in illustrations below.)



Location and Weather

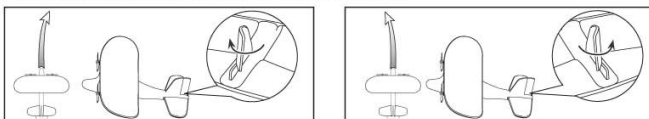
1. Indoor: You can play it at anytime. Please be sure to keep your RC sky triXII away from fan, air-conditioner and so on.
2. Outdoor: It's better to play it in a sunny day with calm wind or slight breeze. (Esp. no more than beaufort scale 1-light air)
3. We suggest you play it on grass to protect your plane when it impacts on ground.
4. Do not play the plane when it is raining, snowing, thundering or near high power cable.



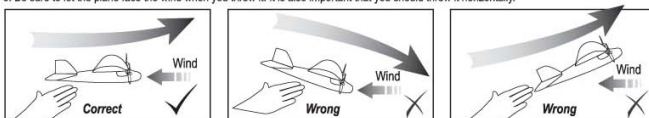
Flying your RC sky triXII

1. Tighten the antenna.
2. Charge the plane in accordance with the battery charging part of the instruction manual.
3. Turn on the power of your plane. When slide the switch to the Power LED Lights up. Be sure the transmitter is "OFF" when turn on the plane.
4. Turn on the power of transmitter.
5. Make sure the plane can go nearly straight.

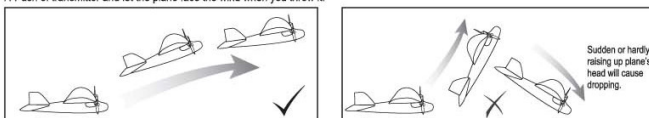
After turning on the power of transmitter, Then push the handsike to the middle, the propellers of plane rotate at low speed. Then throw the plane out horizontally to see its flying trend. In order to make sure the plane goes straightly, please turn the active piece of rudder to right when the plane has the trend to left or turn the active piece of rudder to left when it goes right.



6. Be sure to let the plane face the wind when you throw it. It is also important that you should throw it horizontally.



7. Push of transmitter and let the plane face the wind when you throw it.



- a) The correct flight pattern.

- b) If the plane raises its nose very quickly, it may fly near stalling speed and falls down.

8. When your plane flies steadily, you can push the left / right Control stick to control it's direction. You need to strike but not hold the right button for easy adjustment. The "turning function" depends on the running speed variation between left and right propeller.



9. When the elevator is level, the plane can fly upwards in fast speed.

10. When the elevator is in 0-30° degree upwards, the plane can fly downwards in lower speed.



11. Landing: Position your plane against the wind and move throttle to it's middle position (low speed). Release the throttle after touchdown.

Safety Caution:

Warning: Changes or modifications to this unit not expressly approved by the party responsible for compliance could avoid the use's authority to operate the equipment.

1. Keep hands, hair, face and loose clothing away from the propeller when power is turned on in case that the propeller would injure your hands and face or wrap your hair.
2. Turn off propeller and transmitter when not in use.
3. Remove batteries from transmitter and charger when not in use.
4. Keep you plane in your sight so that you can supervise it all the time.
5. New and alkaline batteries are recommended for use in transmitter and charger to obtain best and maximum performance.
6. When the user finds the plane falling turn off the transmitter immediately in case damaging motor when landing.
7. Users should keep and retain this information for future reference.
8. Your transmitter charger is tailor-made for the Li-Poly rechargeable battery used in plane. Do not use it to charge any battery than that in the plane.

Battery Caution:

1. Non-rechargeable batteries are not to be charged.
2. Rechargeable batteries are to be removed from the product (except plane) before being charged.
3. Rechargeable batteries are only to be charged by an adult.
4. Different types of batteries or new and used batteries are not to be mixed.
5. Only batteries of the same or equivalent type as recommended are to be used.
6. Batteries are to be inserted with correct polarity.
7. Exhausted batteries are to be removed from the toy and disposed in special container.
8. Remove batteries from product before extended storage.
9. Check that the contact surfaces are clean and bright before installing batteries.
10. The supply terminals are not to be short-circuited.
11. If liquid leaking from the batteries stick to your skin or clothes, wash off immediately.
12. If that liquid get into your eyes, wash your eyes with distilled water and consult a physician immediately.

Your plane is equipped with a Li-Poly rechargeable battery, please also pay attention to the following cautions for safety use:

- Do not dispose or use battery in fire or heat.
- Do not use or leave the battery near a heat source such as fire or heater.
- Do not strike or throw the battery against hard surface.
- Do not immerse the battery in water, and keep the battery in a cool dry environment.
- Do not overcharge the battery.
- Do not connect the battery to an electrical outlet.
- Do not solder the battery and pierce the battery with a nail or other sharp object.
- Do not transport or store the battery together with metal objects such as necklaces, hairpins etc.
- Do not disassemble or alter the battery.
- Turn off your equipment switch after use.
- Only use matched charger and do not use other types of chargers.

SUITABLE WORDING FOR BATTERY OPERATED PRODUCTS

Instructions shall contain the substance of the following warnings, as appropriate

Warning:

If battery leakage occurs and comes in contact with the skin or eyes wash immediately with lots of water. Rechargeable batteries should not be used.

Fitting:

Follow equipment instructions carefully and always use recommended type of batteries.

Do not allow children to fit batteries without adult supervision.

Ensure that the batteries are fitted the right way round observing the + and - signs on the battery and the product.

Replace all batteries at the same time*. Do not mix new and old batteries or batteries of different types. * This may need to be modified for products such as electronic organisers where the backup battery needs to be changed separately to the main batteries.

Ensure battery compartment lid is securely replaced.

Take care to switch off equipment after use.

Storage:

Store batteries away from metal objects. Never short circuit batteries.

Remove batteries if equipment is not going to be used for extended periods of time.

Store batteries in a cool dry place away from direct sunlight.

Disposal:

Remove exhausted batteries promptly and dispose of in household waste.

Do not put batteries in fire.

Never disassemble batteries.

Do not attempt to revive batteries by heating, charging or other means.

Products with batteries fitted:

Batteries are included for demonstration purposes only and may need replacing after purchase.

Products with integrated sounders:

For safety reasons the electronic sounder is sealed within this toy and therefore the batteries cannot be replaced. The typical life span of the mechanism is n* months however this may be shorter if usage is high. * Number of months as applicable.

Special Note to Adult:

- * This toy is not suitable for children under 3 years old.
- * This toy can not be touched by infants.
- * This toy must only be used with recommended transmitter.

Note

1. Under the environment with electrostatic discharge, the sample may malfunction and require user to reset the sample.
2. Parental guidance is recommended when installing or replacing batteries.
3. You are advised to replace with new batteries as soon as the function becomes impaired.
4. Users should operate the product in strict accordance with instructions.

Warning:

1. Do not touch the running propeller.
2. Do not play above someone's head.
3. Adult supervision is required.



©2006 SUPER GRAND ENTERPRISE LTD. ALL RIGHTS RESERVED
E-MAIL ADDRESS: info@sgetoys.com
URL: <http://www.super-grand.com>



WARNING:
CHOKING HAZARD-Small parts.
Not for children under 3 years.

Item No.05081

MADE IN CHINA