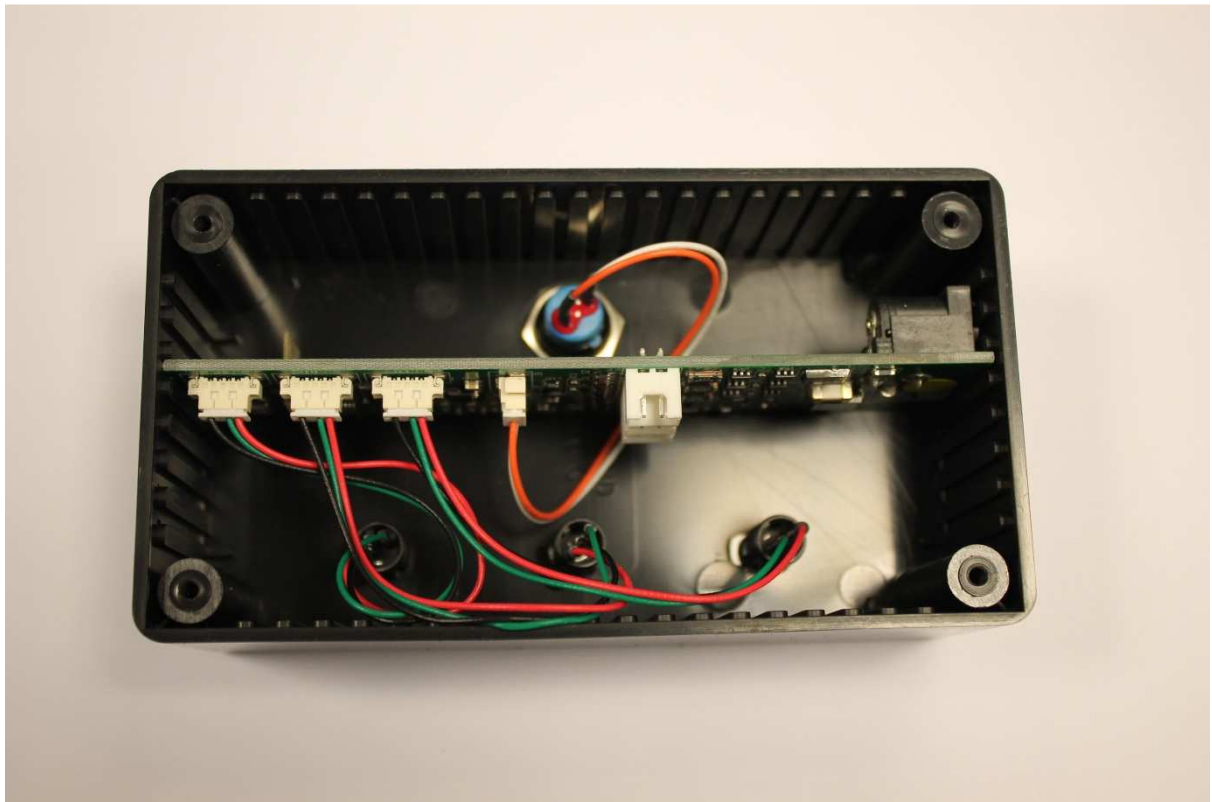
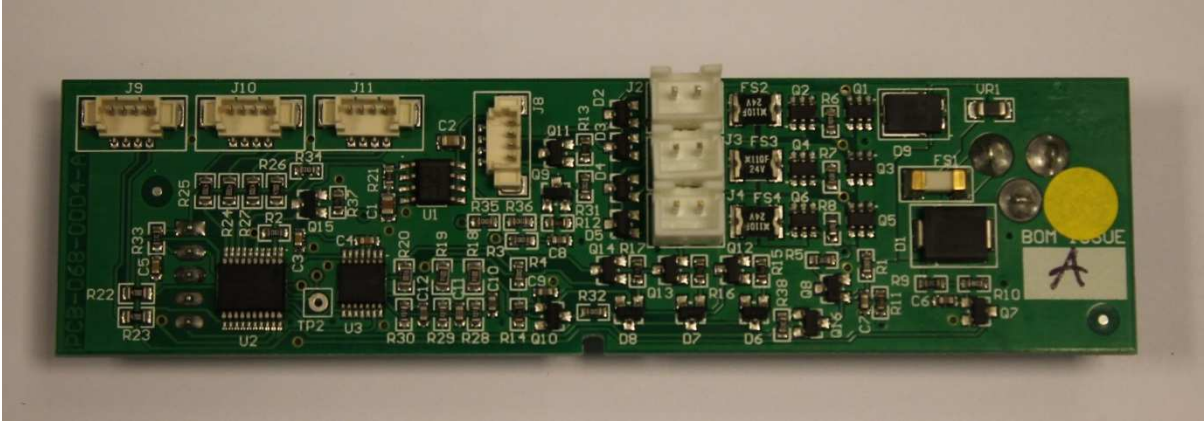
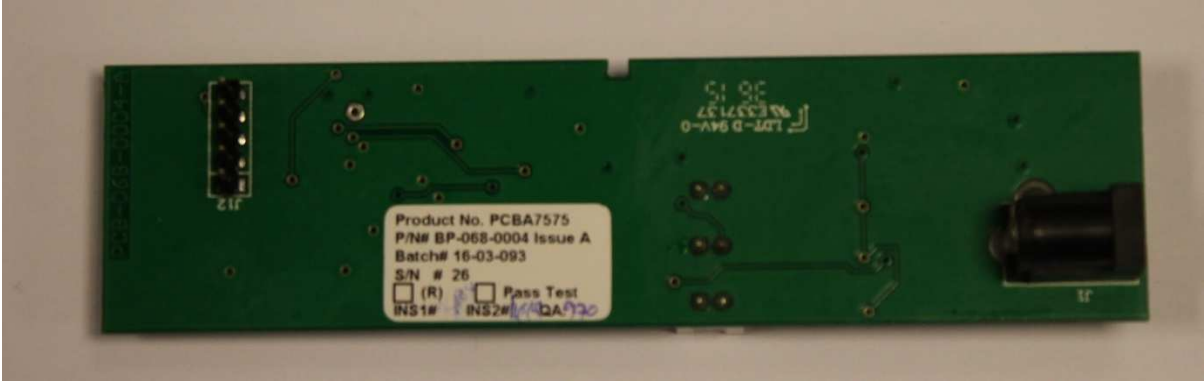


Case Charger inside





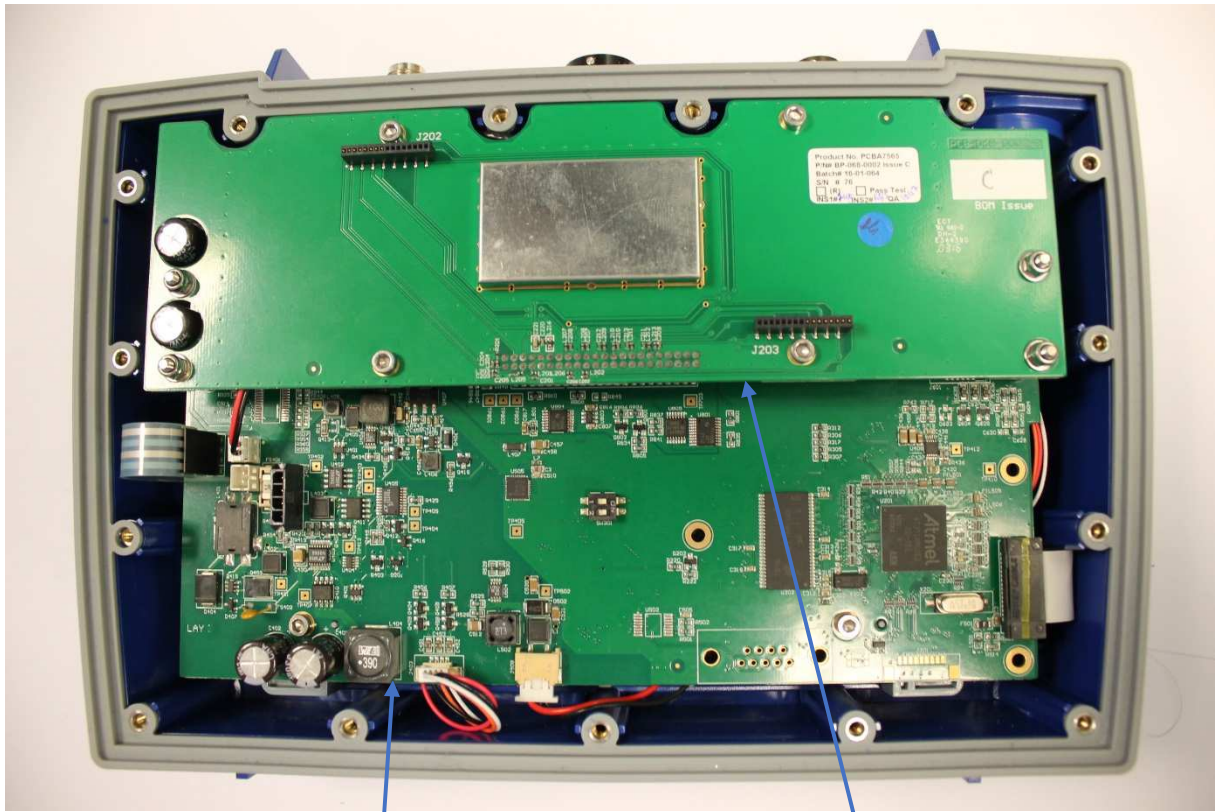
Case charger PCB – BP-068-0004 (Top)



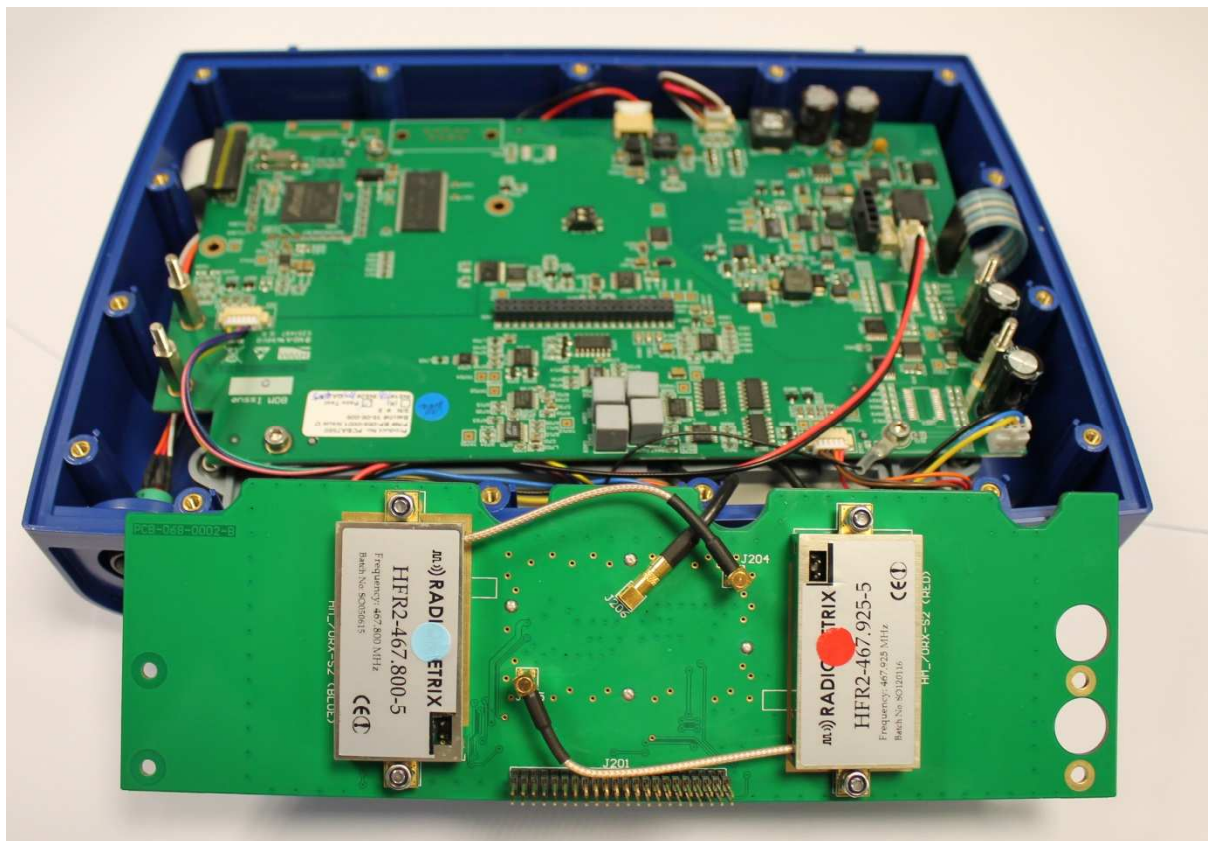
Case charger PCB – BP-068-0004 (Bottom)



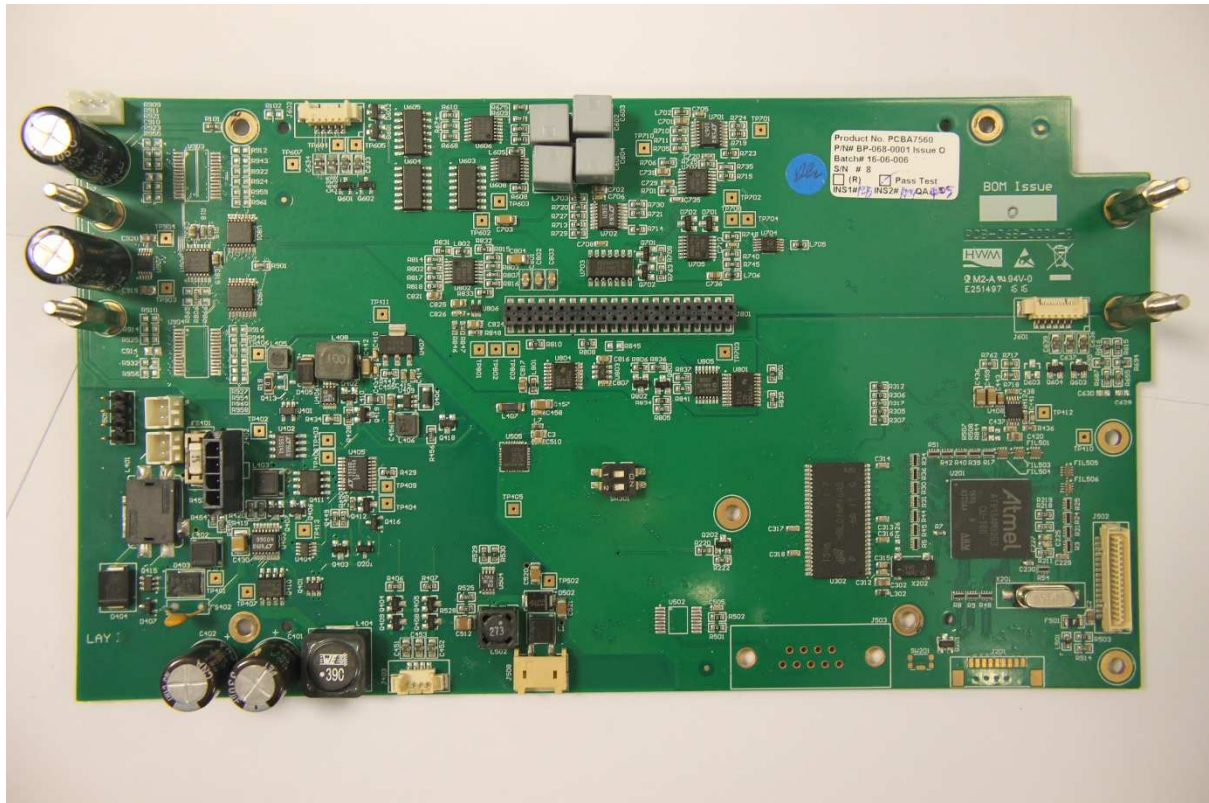
Base Station Back inside



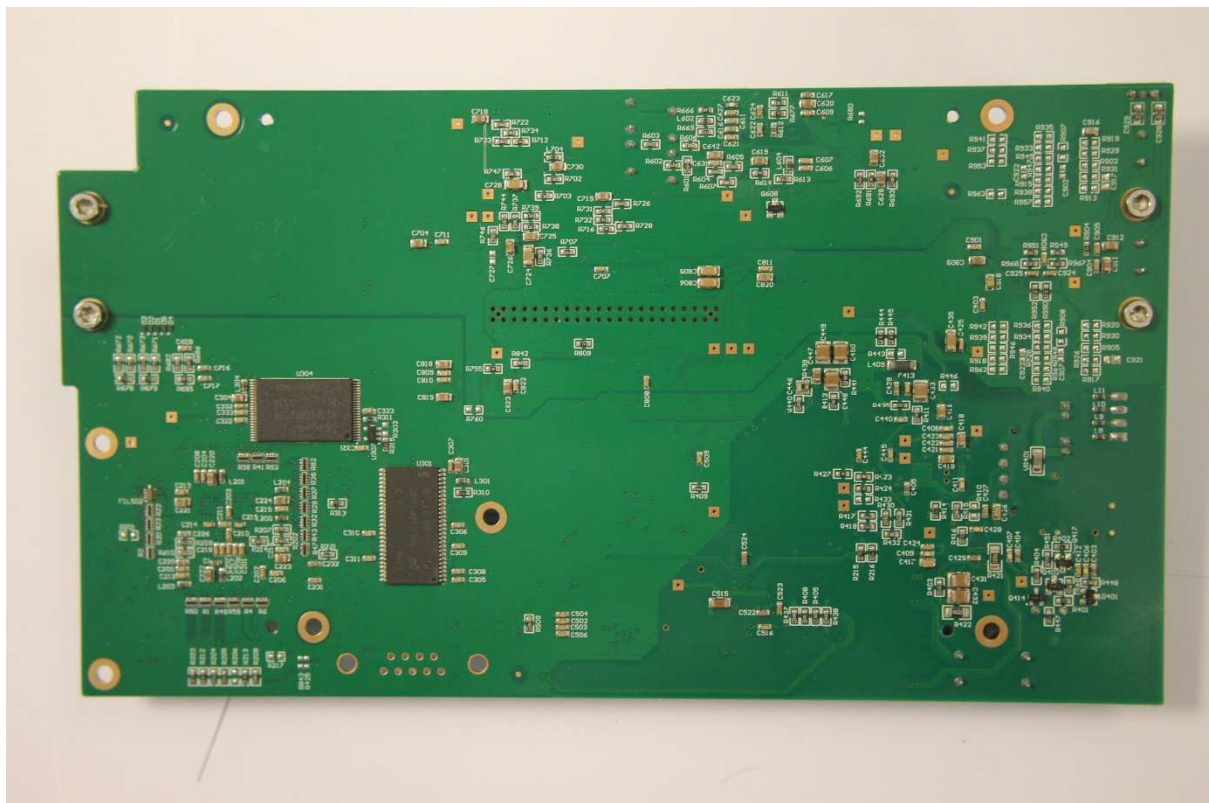
Analogue Correlator Main PCB - BP-068-0001 (Top) Analogue Correlator Radio PCB - BP-068-0002 (Top)



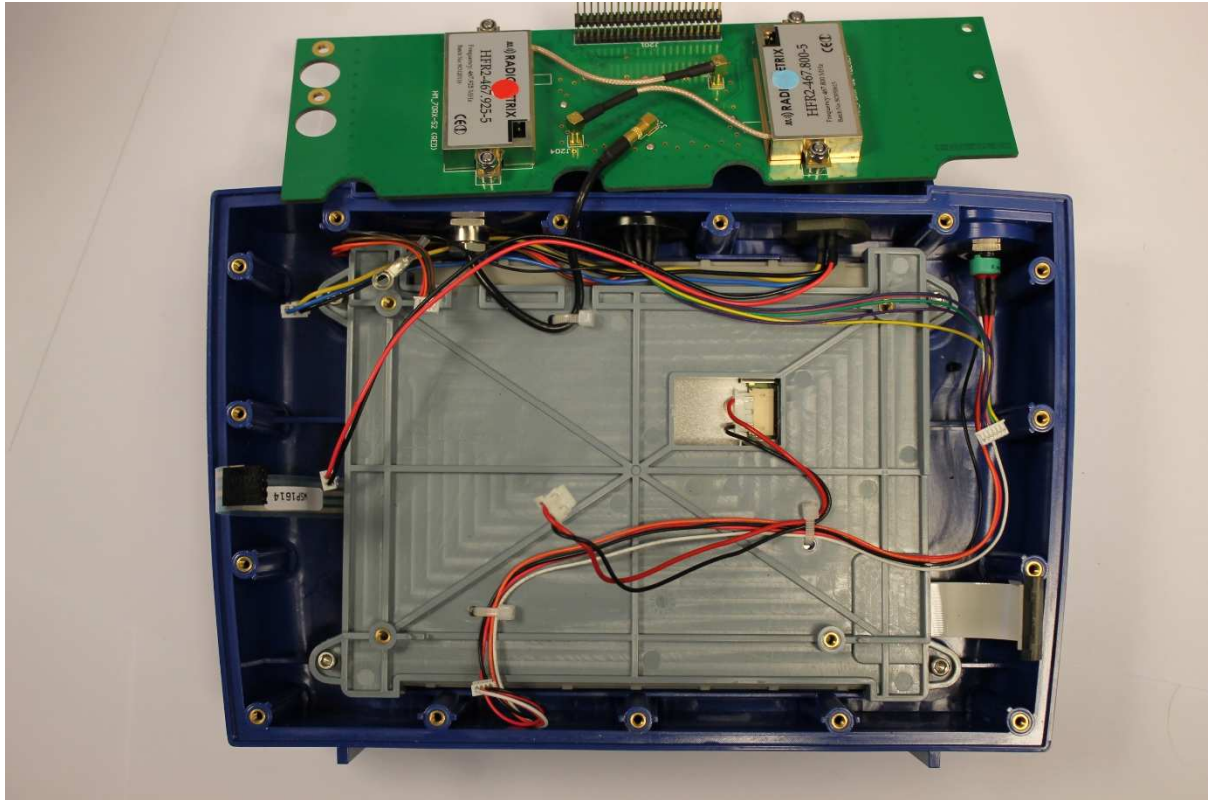
Analogue Correlator Radio PCB - BP-068-0002 (Bottom)



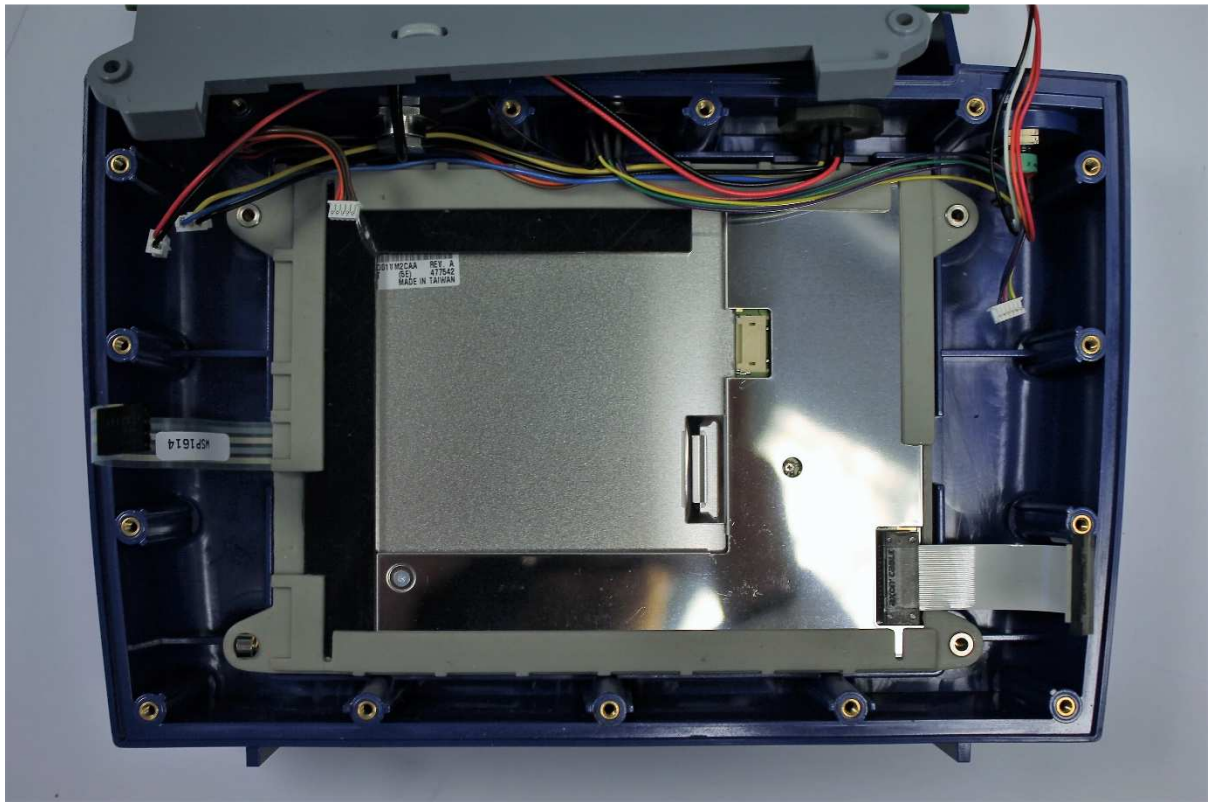
Analogue Correlator Main PCB - BP-068-0001 (Top)



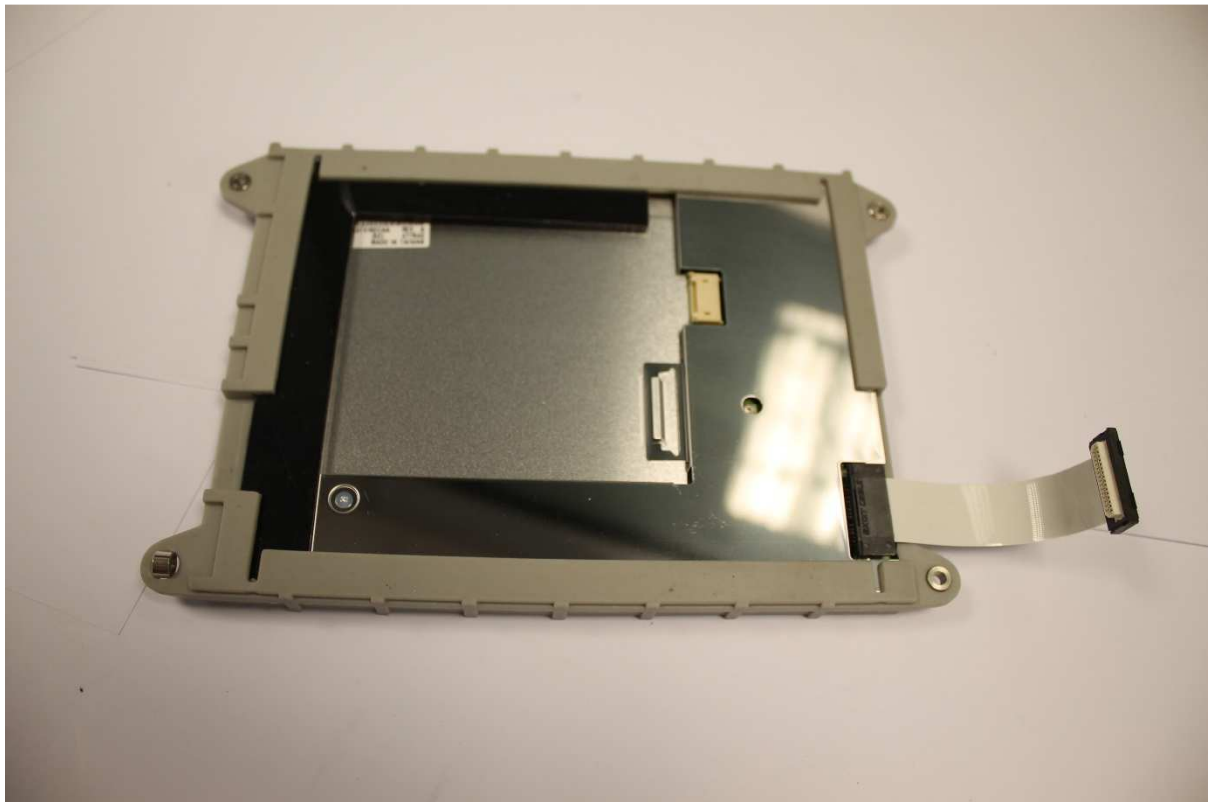
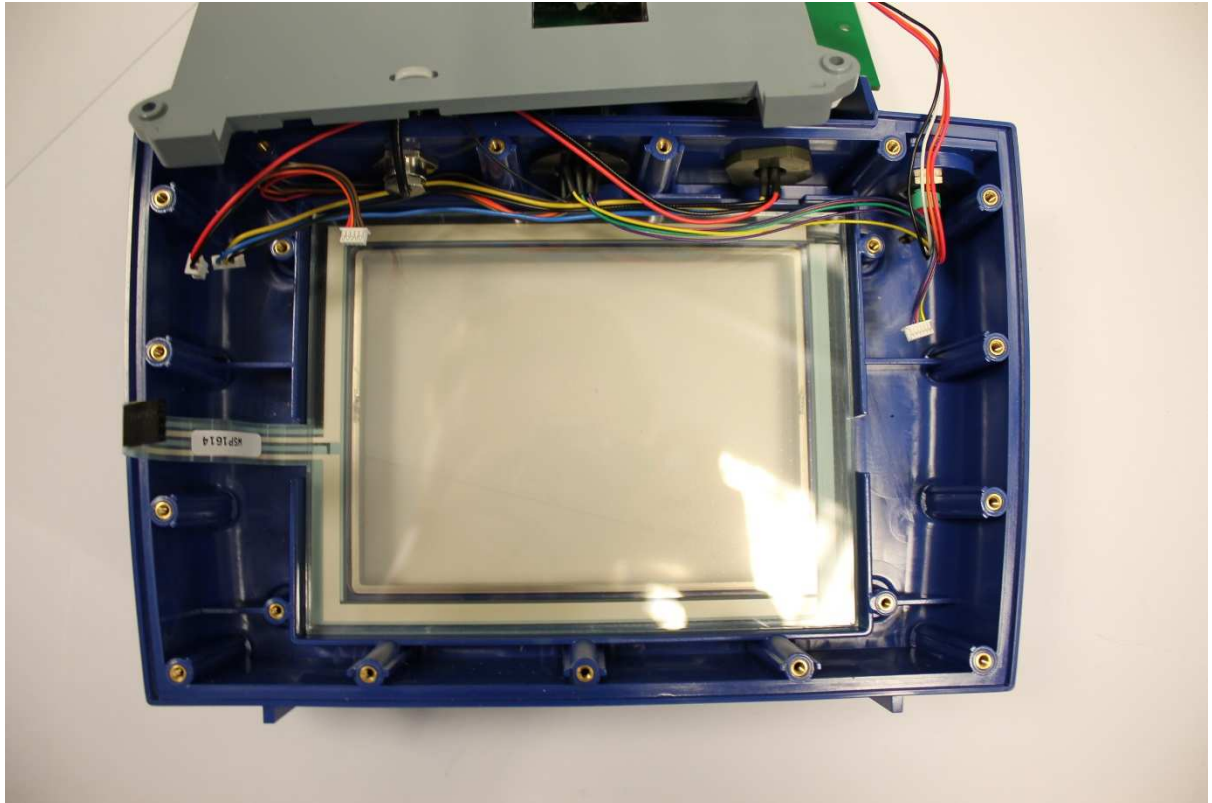
Analogue Correlator Main PCB - BP-068-0001 (Bottom)



Main PCB removed



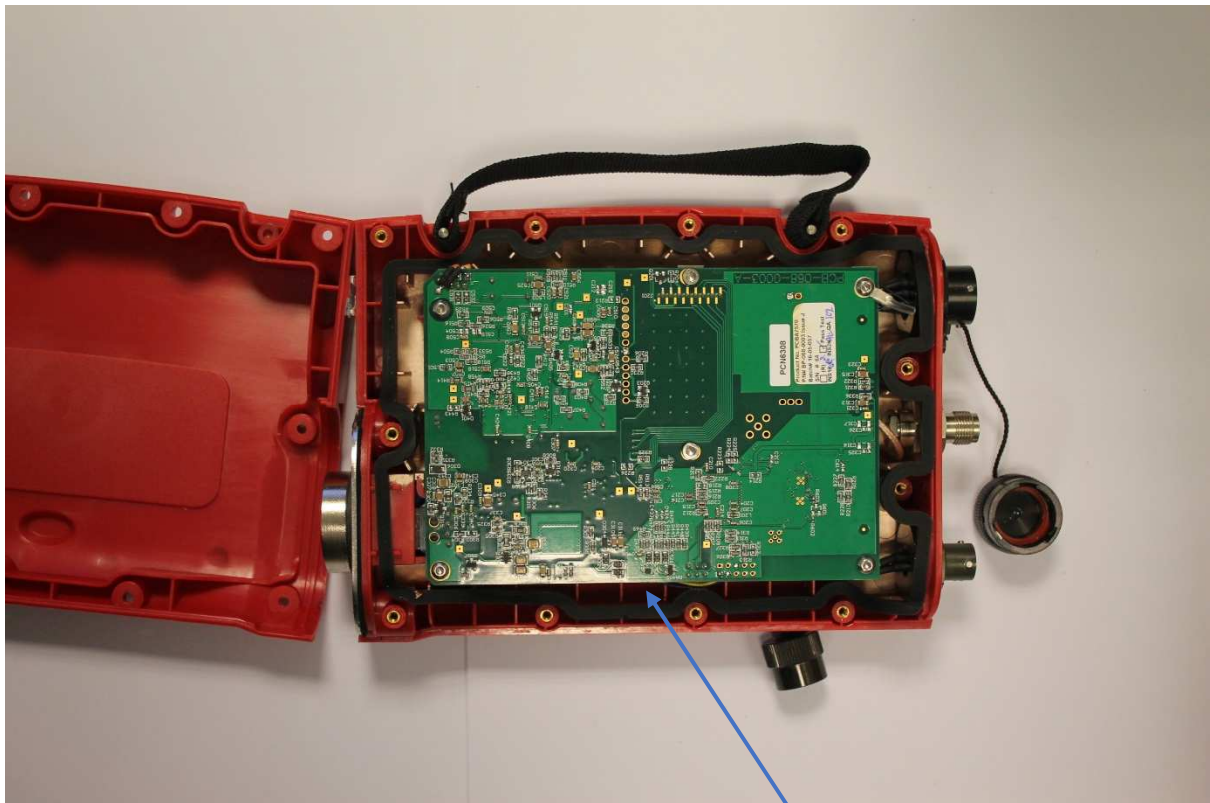
Back of display



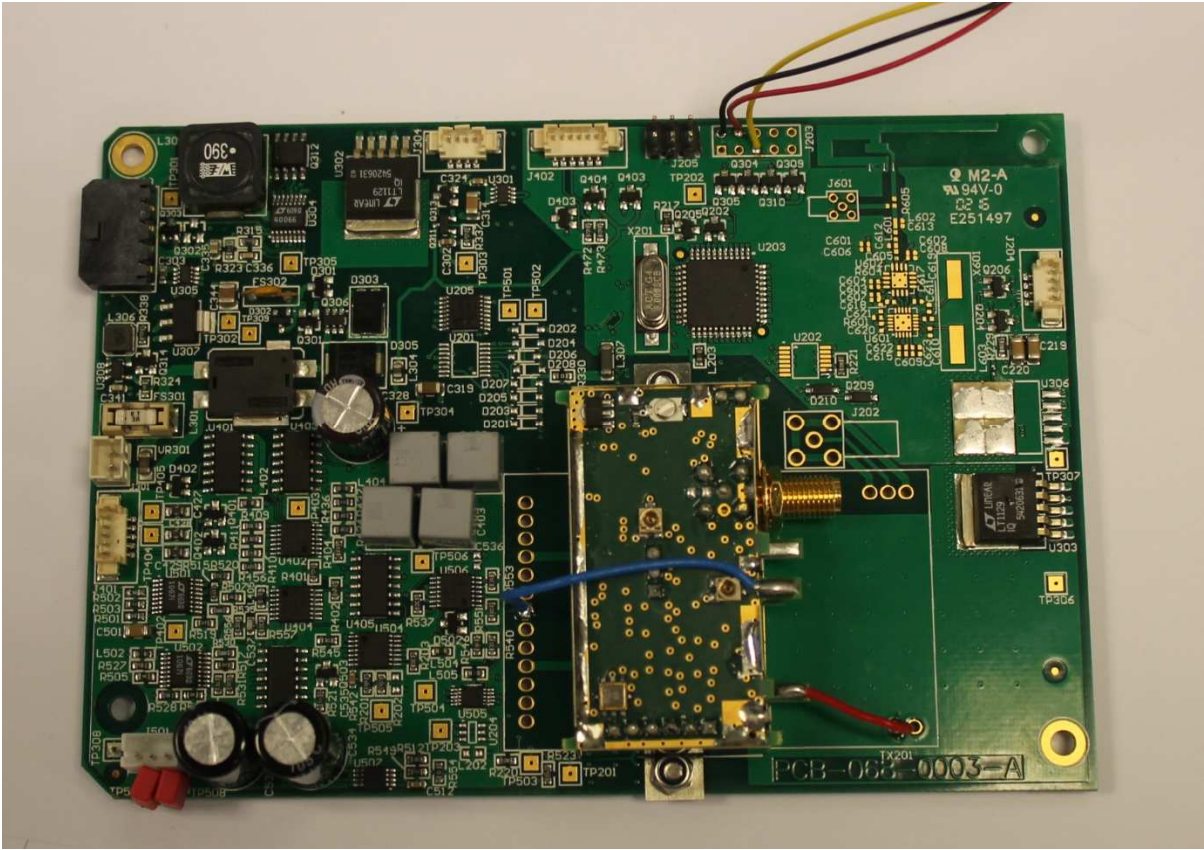
Hitachi Display



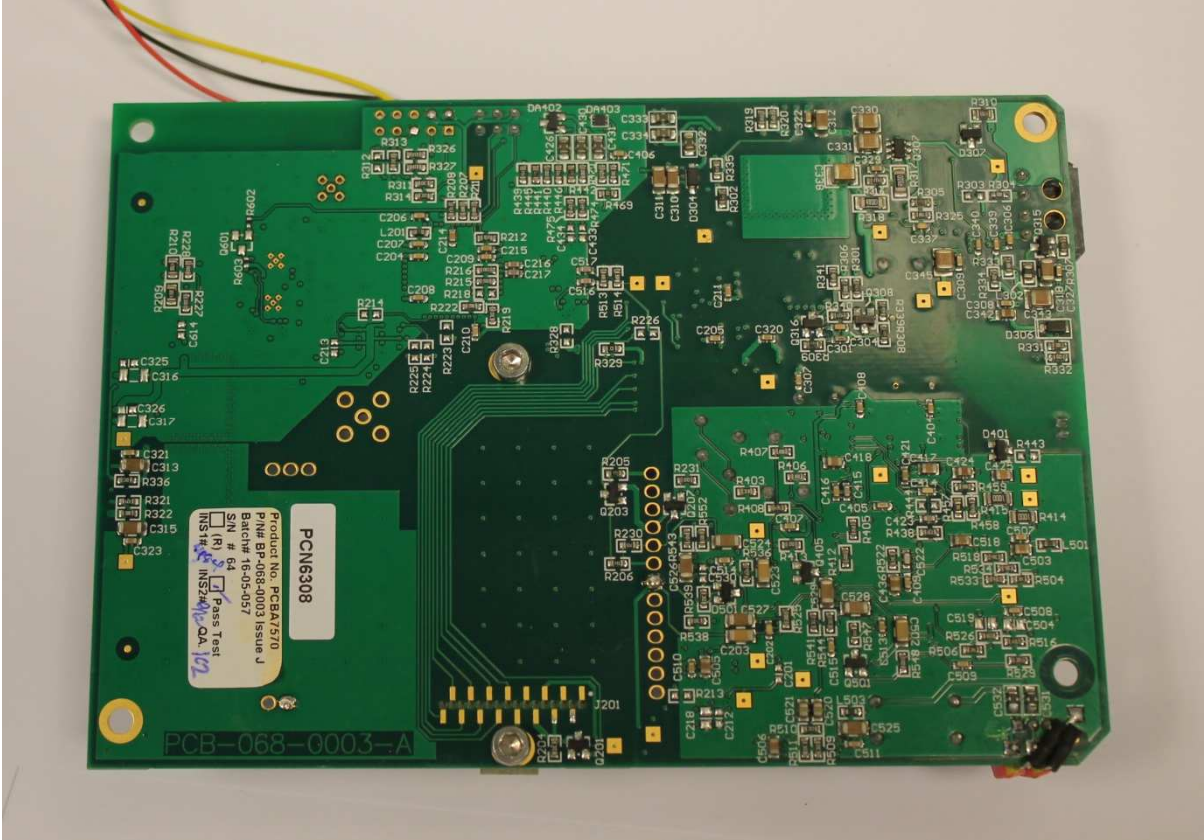
Hitachi Display



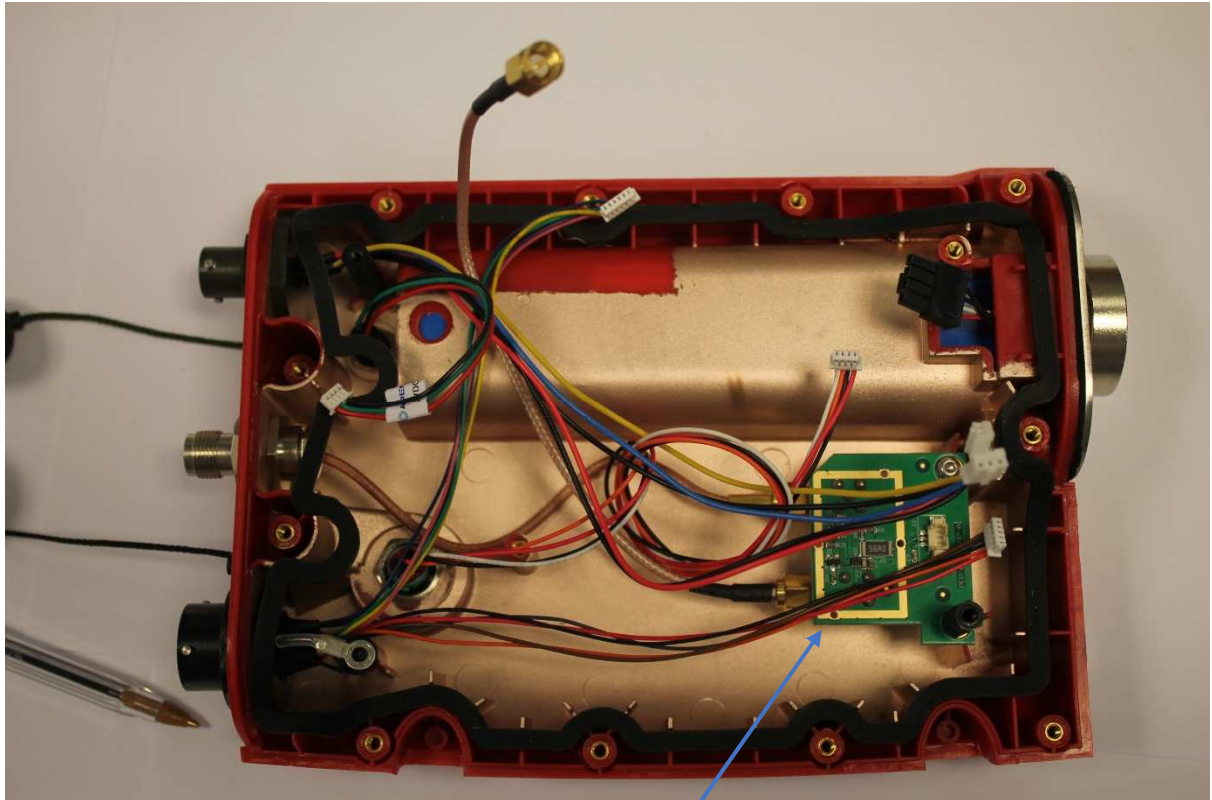
Red outstation with lid removed. Outstation PCB – BP-068-0003



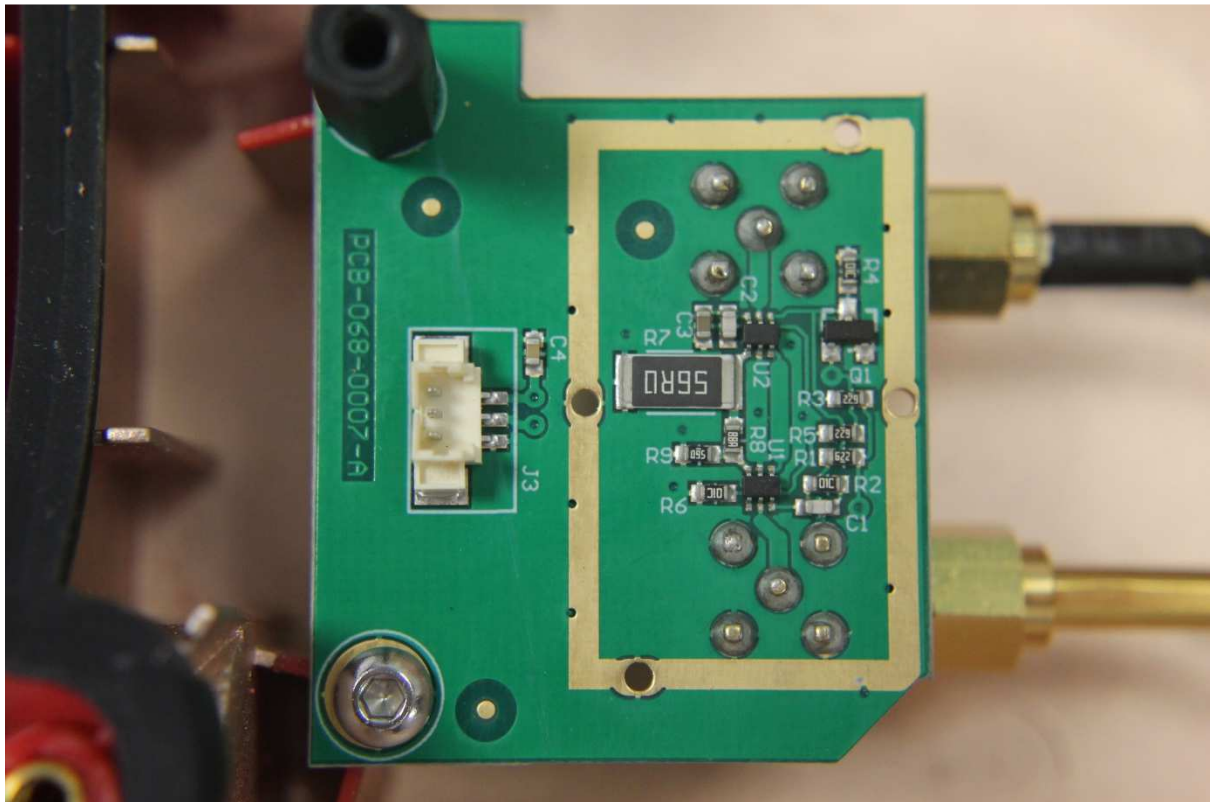
Outstation PCB – BP-068-0003 (Top)



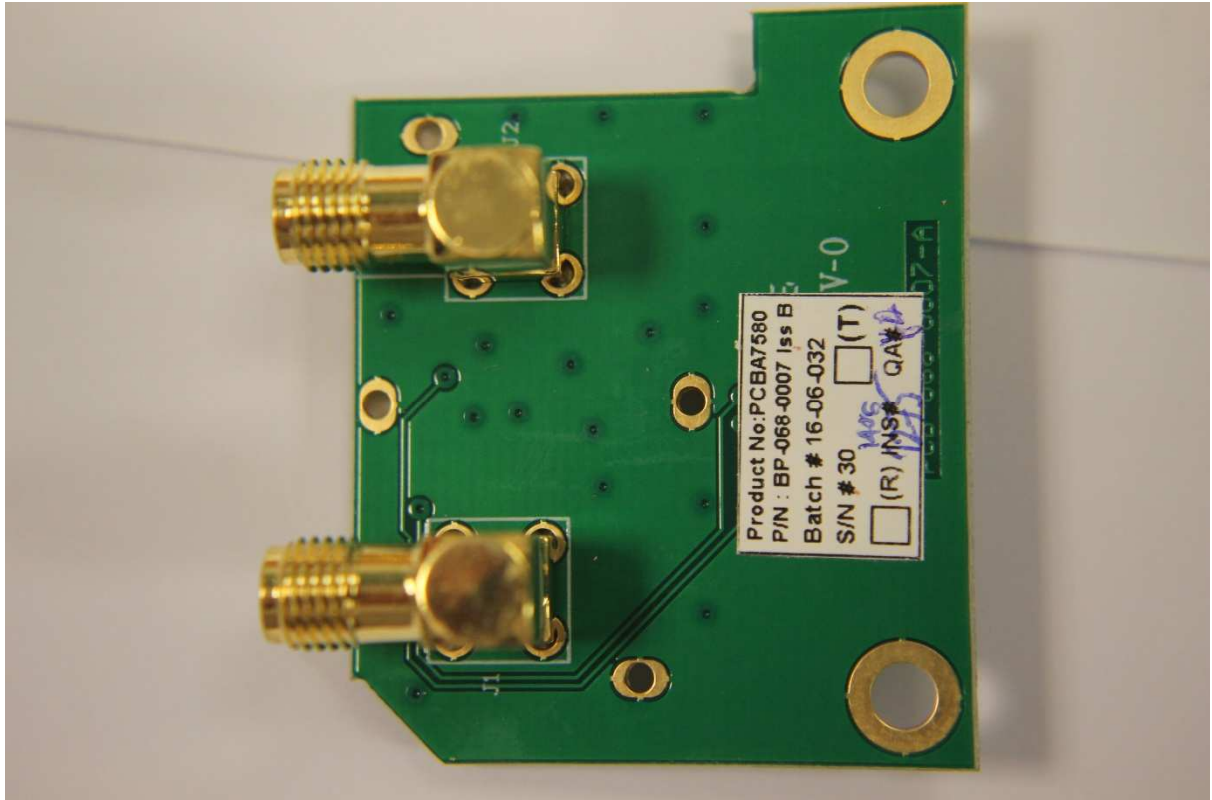
Outstation PCB – BP-068-0003 (Bottom)



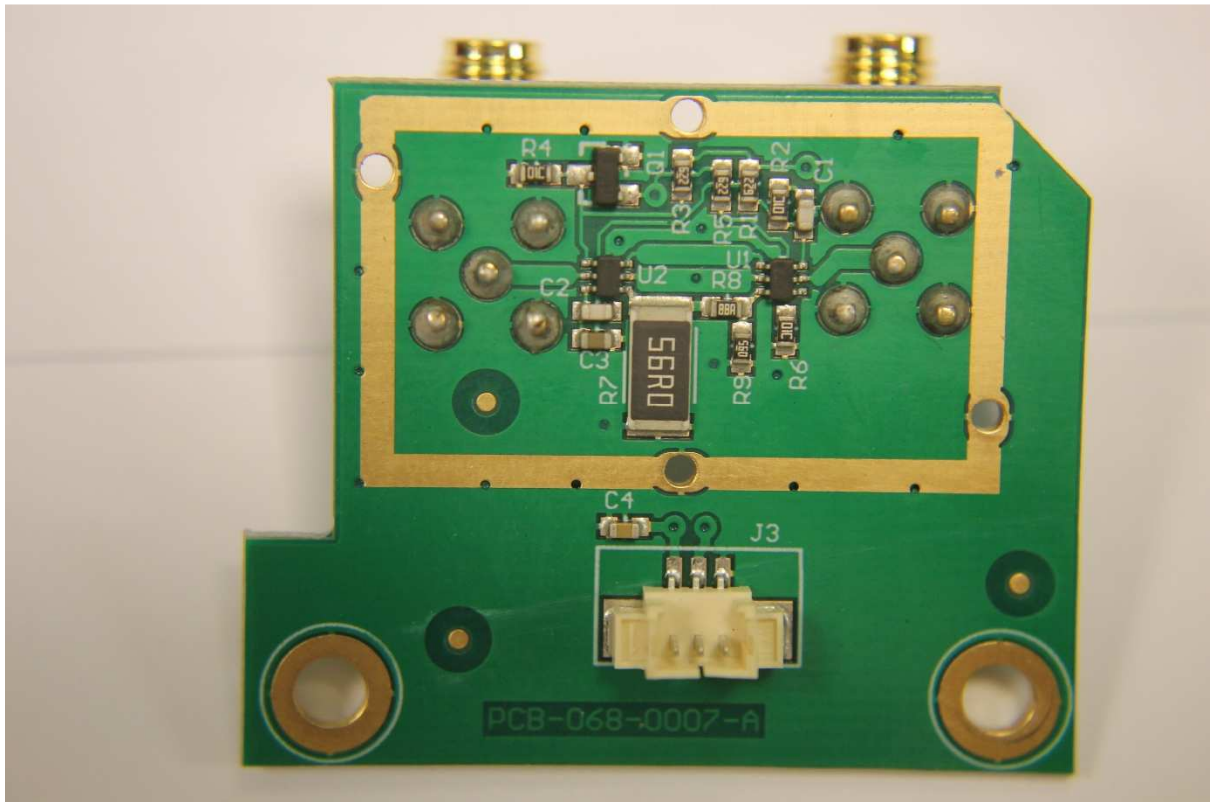
TX_Attenuator PCB



TX_Attenuator PCB



TX_Attenuator PCB - BP-068-0007 (Bottom)



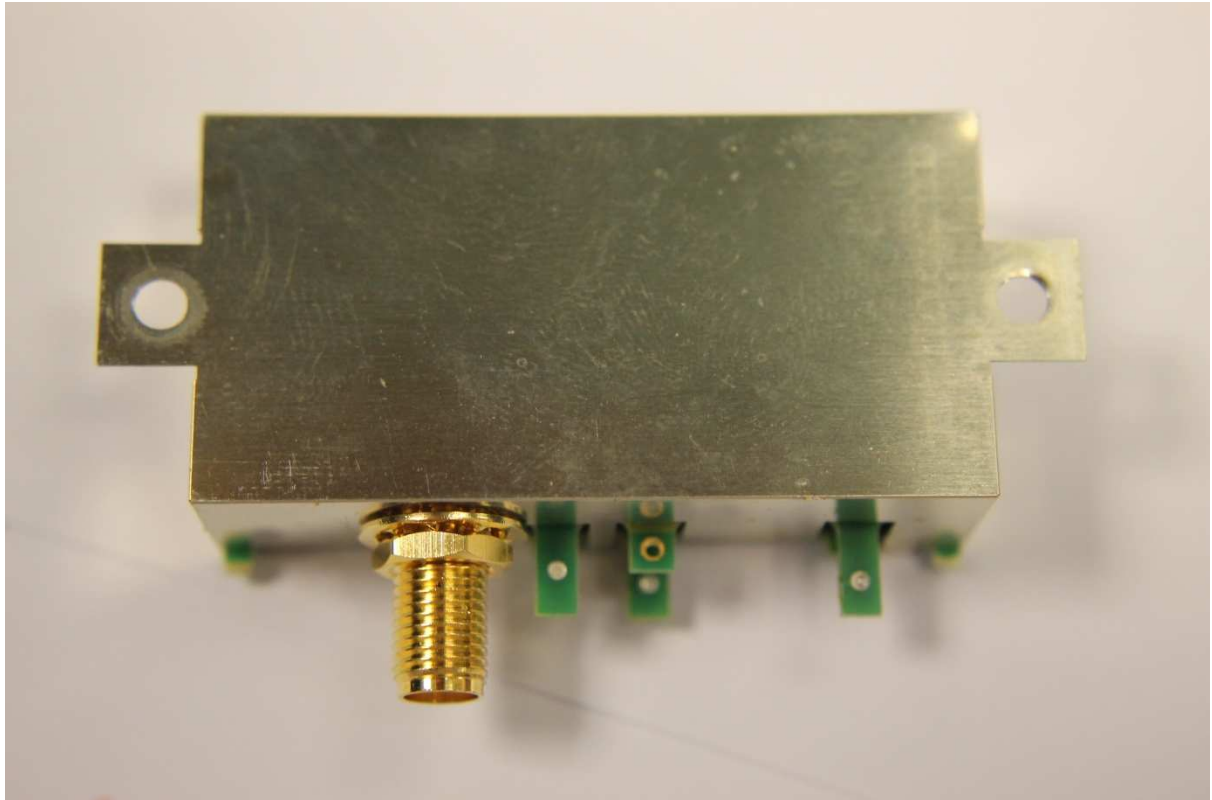
TX_Attenuator PCB - BP-068-0007 (Top)



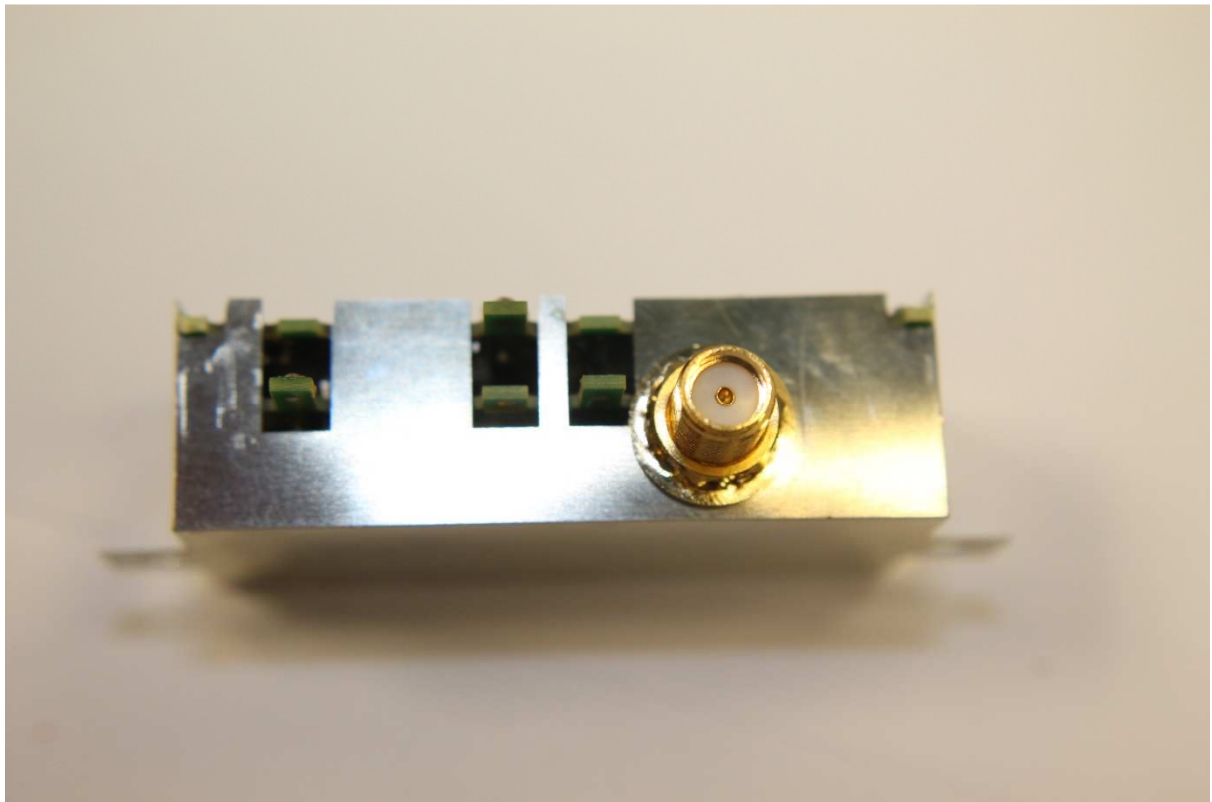
Red Outstation Radio Transmitter Module



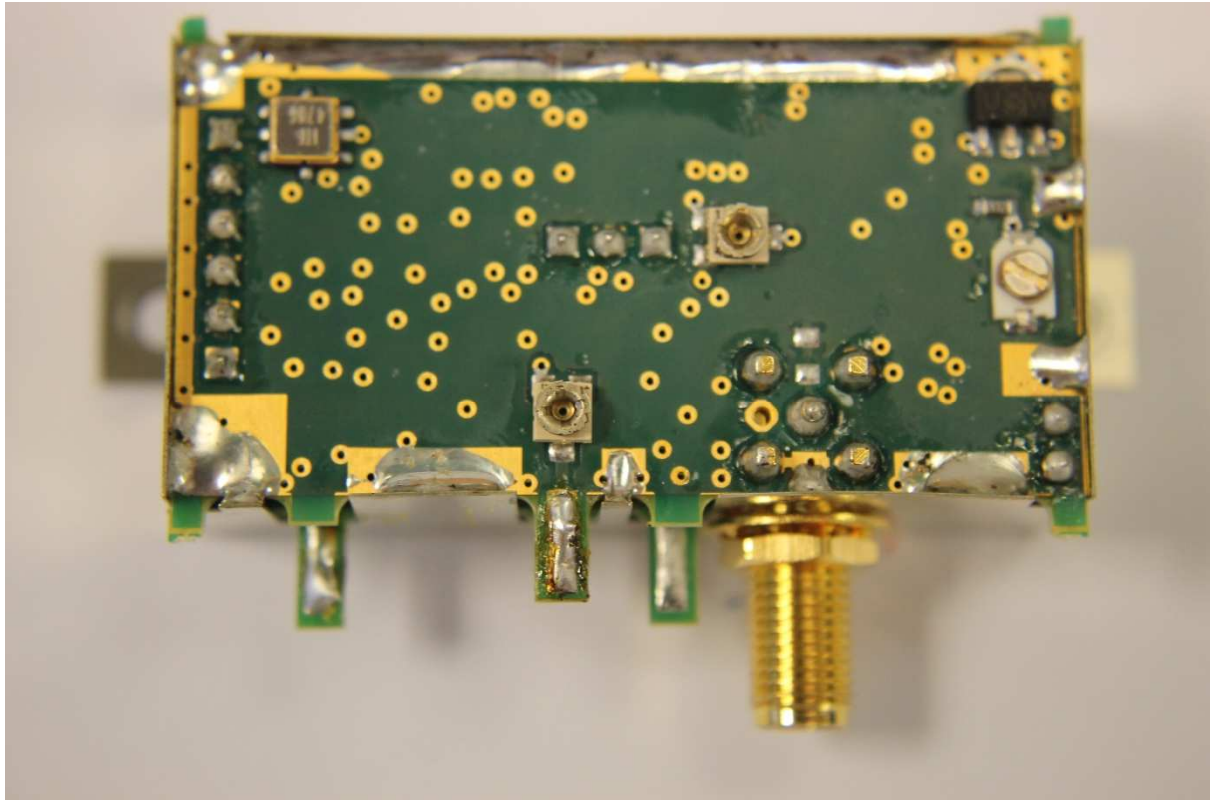
Blue Outstation Radio Transmitter Module



Radio Transmitter Module Top



Radio Transmitter Module Front



Radio Transmitter Module Bottom