



Reader User Manual

Date: 24-Aug-04

Prepared by:

Scanpak Inc.

2250 Place Transcanadienne

Dorval, Quebec

Canada H9P 2X5

Tel: 1-514-685-3505

Fax: 1-514-685-5484

www.scanpak.com

TABLE OF CONTENTS

<u>PRE-INSTALLATION</u>	<u>3</u>
<u>SOFTWARE INSTALLATION</u>	<u>5</u>
<u>HARDWARE INSTALLATION</u>	<u>6</u>
<u>RUNNING THE SOFTWARE</u>	<u>7</u>



Pre-Installation

1. Configure your network card to the IP address 192.168.123.23.
2. Double-click on the executable file *j2sdk-1_4_2_01-windows-i586.exe* located in the *Java* folder of the CD.
3. Select *I accept the terms in the license agreement* and click *Next* as shown in Figure 1.

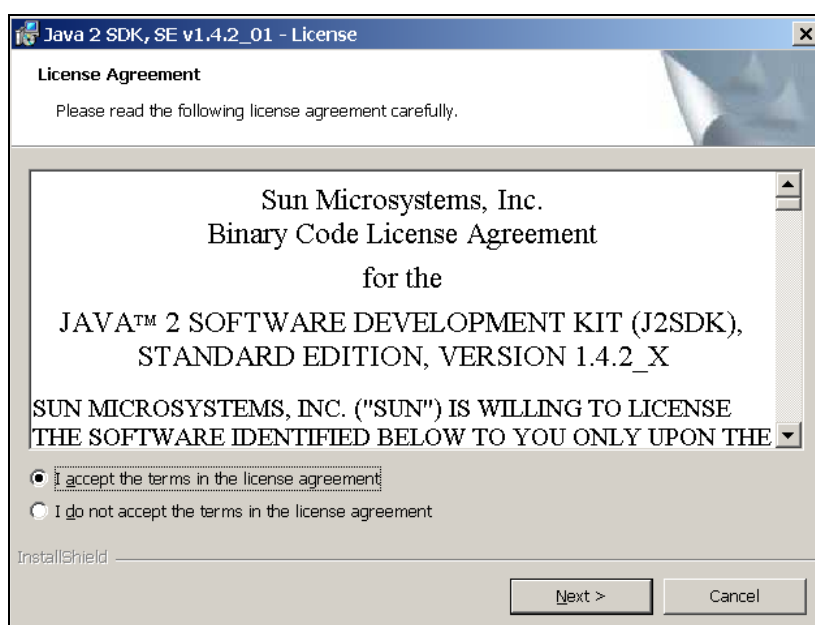


Figure 1.

4. Click *Next* as shown in Figure 2.

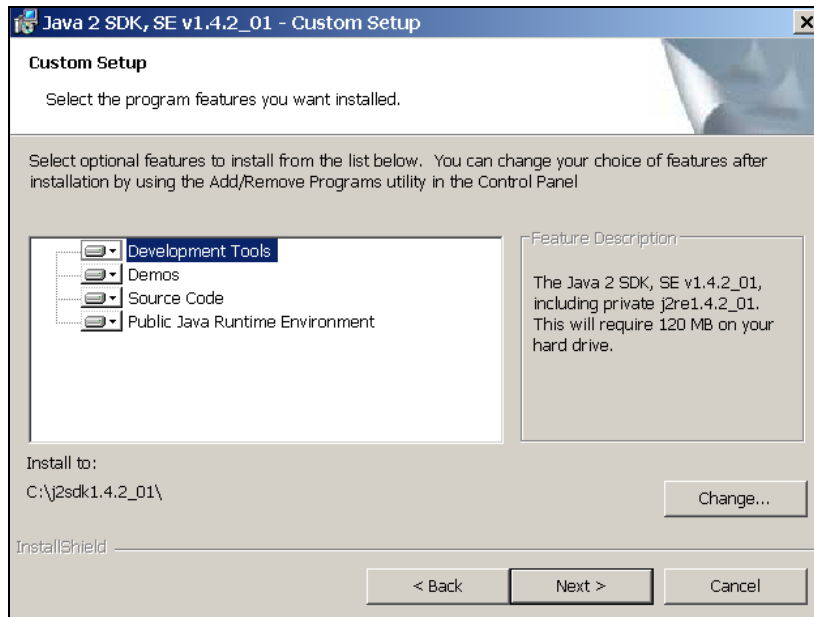


Figure 2.

5. Click *Install* as shown in Figure 3.

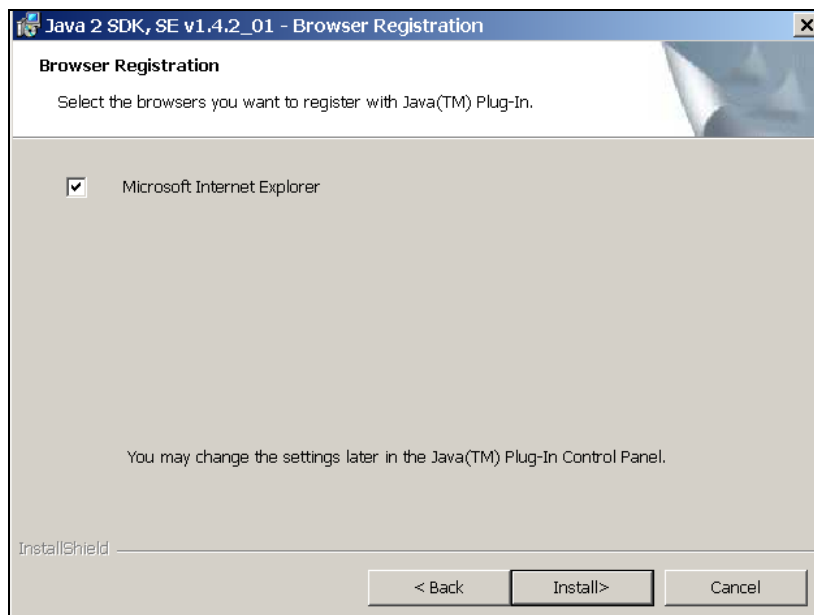


Figure 3.



6. Click *Finish* as shown in Figure 4.

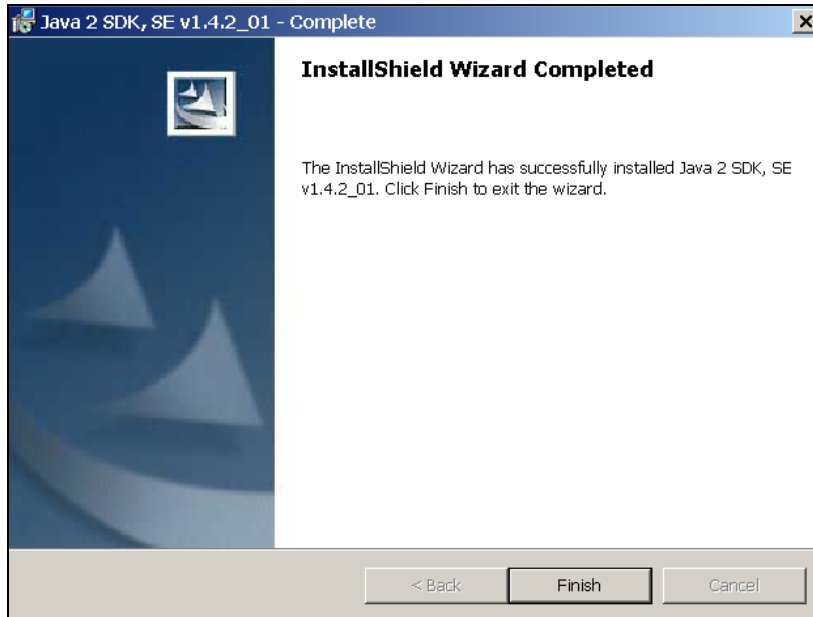


Figure 4.

7. Click *Yes* as shown in Figure 5. The system will reboot.

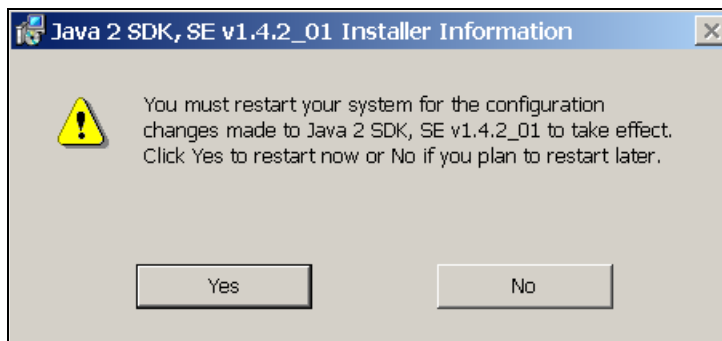


Figure 5.

8. Copy the *Active* folder from the CD to your hard drive.



Hardware Installation

1. Connect the transceiver as shown in the picture below.



Note: The other end of the cable connected to the slot market *PC* should be connected to the network LAN.

2. Check if the power is on. This is indicated by a green light on the transceiver and the switch.



Running the Software

1. Double-click on the file *Ace.jar* located in the *Active\ACE* folder on your hard drive and the screen shown in Figure 1 will appear.

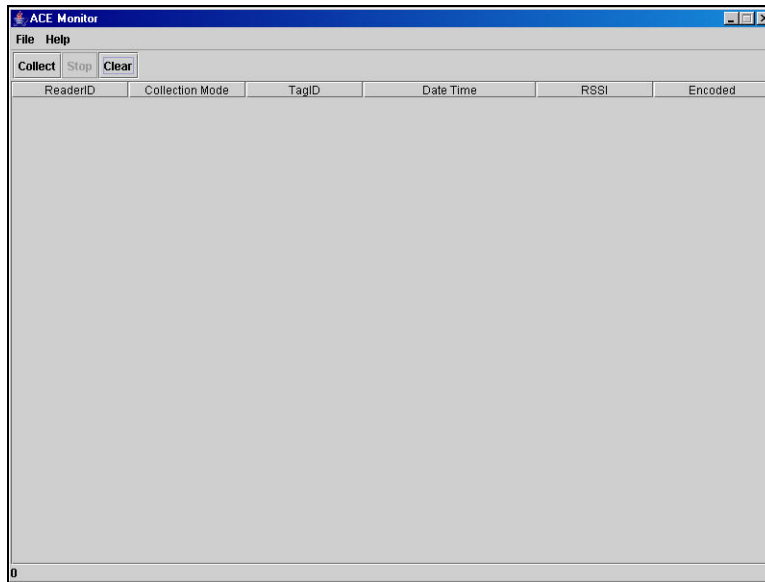


Figure 1.

2. Click *Collect* to start receiving the tag information from the reader as shown in Figure 2.

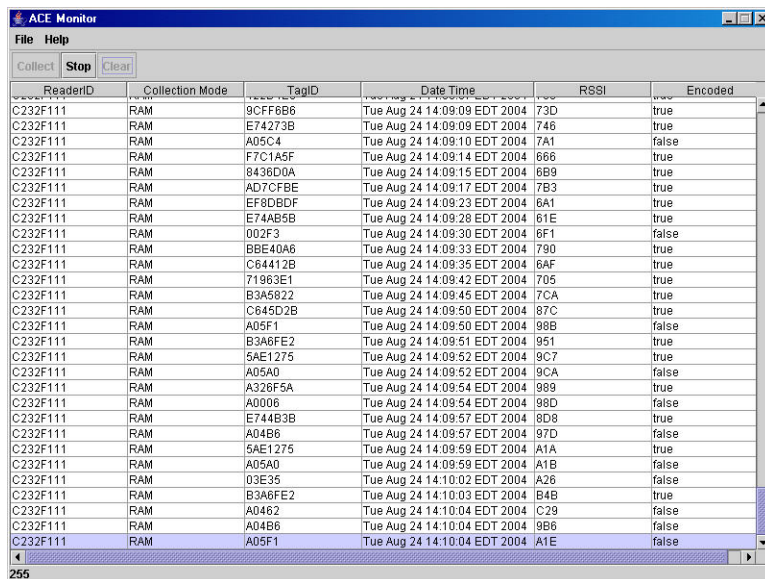


Figure 2.

3. Click *Stop* to stop getting the information.
4. Click *Clear* to get the original screen as shown in Figure 3.

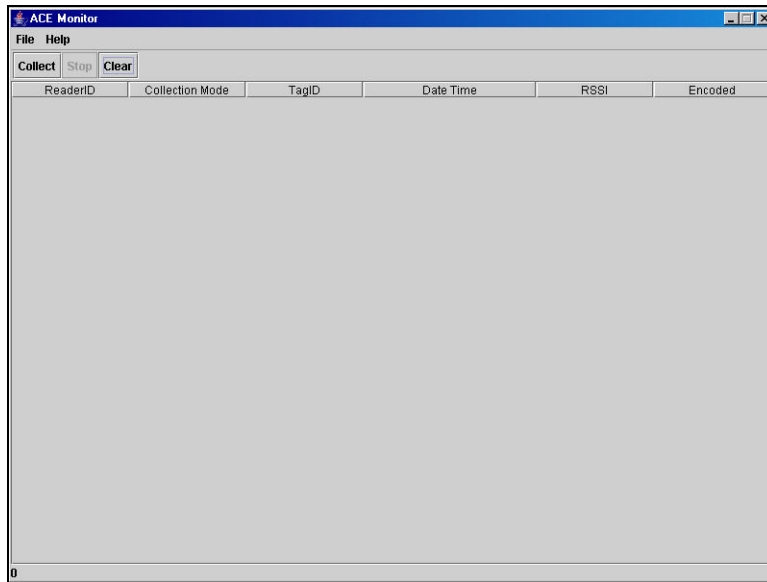


Figure 3.



Warning: Changes or modifications not expressly approved by Scanpak Inc. could void the user's authority to operate the equipment

Model: Active Reader TTB-434

FCC ID: RUQTTB-434

THIS DEVICE COMPLIES WITH PART 15 OF THE FCC RULES. OPERATION IS SUBJECT TO THE FOLLOWING TWO CONDITIONS. (1) THE DEVICE MAY NOT CAUSE HARMEFUL INTERFERENCE AND (2) THIS DEVICE MUST ACCEPT ANY INTERFERENCE RECEIVED, INCLUDING INTERFERENCE THAT MAY CAUSE UNDESIRED OPERATION.