



RFID TagAAA User Manual for Security & Tracking

Date: 01/Feb/2006

Prepared by:

Scanpak Inc.

2250 Place Transcanadienne

Dorval, Quebec

Canada H9P 2X5

Tel: 1-514-685-3505

Fax: 1-514-685-5484

www.scanpak.com



TABLE OF CONTENTS

<u>1. INTRODUCTION.....</u>	<u>3</u>
<u>2. DESCRIPTION.....</u>	<u>4</u>
<u>3. PREPARING FOR INSTALLATION</u>	<u>5</u>
INSTALLATION CHECKLIST.....	6
INSTALLATION GUIDELINES.....	7
<u>4. PREPARATION OF GALLEY EQUIPMENT</u>	<u>8</u>
GALLEY EQUIPMENT CLEANING AND PREPARATION	8
INSTALLATION OF THE TAG	9



1. Introduction

These installation procedures describe how to properly install an RFID Tag_AAA in conformity with Scanpak's standards.

First and foremost, this document presumes that you are familiar with Galley Equipment or other metal bins equipments.

If you feel uncomfortable with any of the above tasks, immediately contact your supervisor and discuss that matter with him or her.

This document will firstly present to you an installation checklist to make sure you have all the equipments and tools required to a successful installation. Then, it will guide you to make decisions regarding the positioning of the tag onto the Galley Equipment.

"This device complies with Part 15 of the FCC Rules. Operation is subject to the following two conditions: (1) This device may not cause harmful interference, and (2) this device must accept any interference received, including interference that may caused undesired operation."

NOTE: THE MANUFACTURER IS NOT RESPONSIBLE FOR ANY RADIO OR TV INTERFERENCE CAUSED BY UNAUTHORIZED MODIFICATIONS TO THIS EQUIPMENT. SUCH MODIFICATIONS COULD VOID THE USER'S AUTHORITY TO OPERATE THE EQUIPMENT.



2. Description

The developed system consisting of Scanpak reader devices and tagAAA devices is ideal for realtime security, tracking, location and identification of assets, providing means for a remote upload of tag data to a central server through the Internet.

The system utilizes miniature battery-operated radio tags (tagAAA) attached to assets and a cellular network of Scanpak reader devices to detect the presence and location of the tags. The locating system is deployed as a modular matrix of readers installed at strategic locations and provides full coverage of the surveyed area. The system is modular and permits addition of new surveyed areas by just plugging in additional readers to the network.

Each of the readers has its own memory block to temporarily store the data received from the tags. This data is automatically transferred to a server. The system continually updates the server with current tag data. The update may be as frequent as every few seconds. In typical applications system can simultaneously track very large amounts of tags.

The system takes a full advantage of communication means provided by the LAN and access to the Internet. It makes possible to streamline large amount of captured data both within the LAN and to an outside location accessible through the Internet.

3. Tag Images

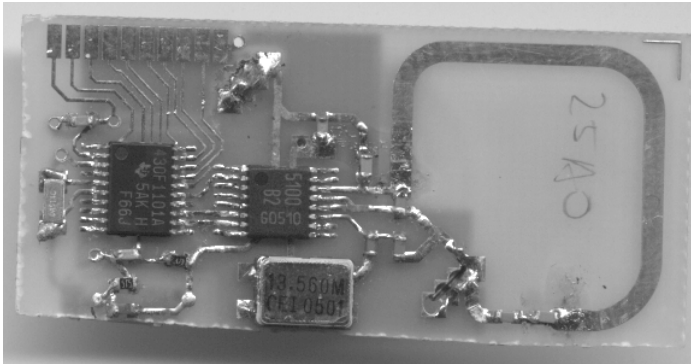


Figure 1. TagAAA circuit top view

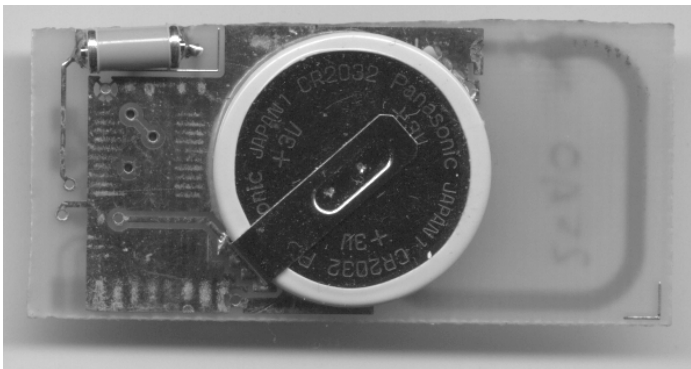


Figure 2. TagAAA circuit bottom view

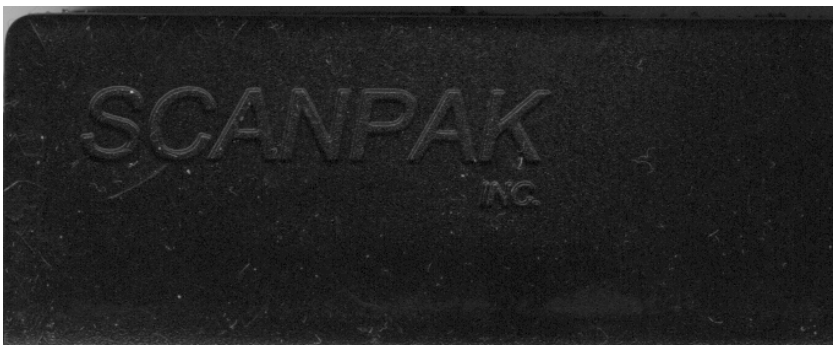


Figure 3. TagAAA with black plastic top view

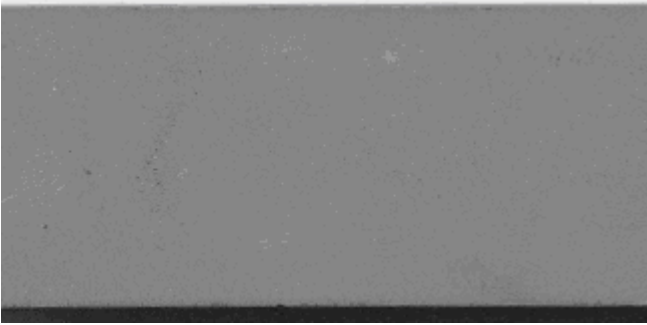


Figure 4. TagAAA with black plastic bottom view

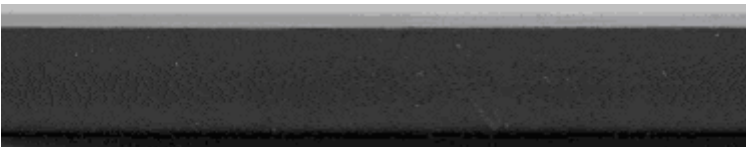


Figure 5. TagAAA with black plastic back view



Figure 6. TagAAA with black plastic side view.

4. Preparing for Installation

Installation Checklist

The following installation checklist is intended to help you prepare the installation of tag.

When performing the installation, you should bring with you the following tools:

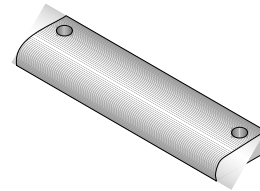
☐ Acetone



☐ Rag cloth



☐ TagAAA



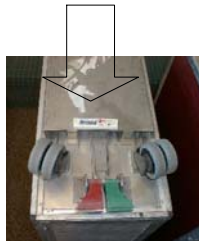
Installation Guidelines

Your installation company will create a special help-desk for all installation questions. If the installation company help-desk cannot answer a question, it will immediately establish a phone conference with Scanpak's help-desk to answer the question.

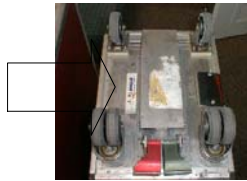
5. Preparation of Galley Equipment

Galley Equipment Cleaning and Preparation

1. The location of the tag will determine the type of galley equipment. See images below.



Full size atlas



Half size atlas



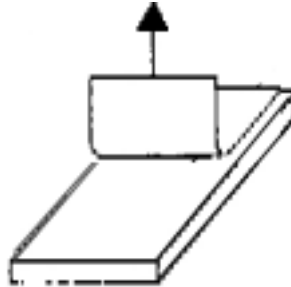
Custom

2. Empty all remaining items and trays inside the galley equipment.
3. Close equipment door and lock if needed.
4. Flip the equipment upside down as shown by the above pictures.
5. Clean the outside surface of the galley equipment where the tag will be installed with a rag cloth with acetone. This is done to remove any grease, paint etc. that will interfere with adhesion. (You should wear rubber or latex gloves and perform this task in a well-ventilated area)



Installation of the Tag

1. Peel off the adhesive protector at the bottom of the tag to expose the adhesive side of the tag. See figure below.



Bonding Pressure	27 kg
Bonding Period	10 to 12 sec
Bonding Temperature	High, Medium, Low temperature
Bonding Solvency	Solvent resistance
Bonding Thickness	2.0 mil

2. Position the Tag horizontally to the location where you have cleaned with the acetone.
3. Carefully press the Tag down and hold for about 10 seconds.
4. The installation of the tag onto the galley equipment is now complete.