

Q802XKG

**802.11b/g Wireless PCI Express Mini Card
(USB Interface)**

User's Manual

Contents:

Driver Installation

Uninstalling the Wireless LAN Card

Configuring the Wireless LAN Card

 Connecting to an existing network

Configuring the Wireless LAN Card

✧ *This product standardized the Radio Frequency*

Module:  CCXXxxYYyyyZzW

 **NOTE:**

✧ The system manufacturer is required to attach this Module Approval Label to the system prior to delivery.

Driver Installation

1. After you have installed the Wireless Adapter your computer will display a **Found New Hardware Wizard** screen, click **Cancel** to continue.



2. Go to the directory where the Wireless Adapter Installation stored, then

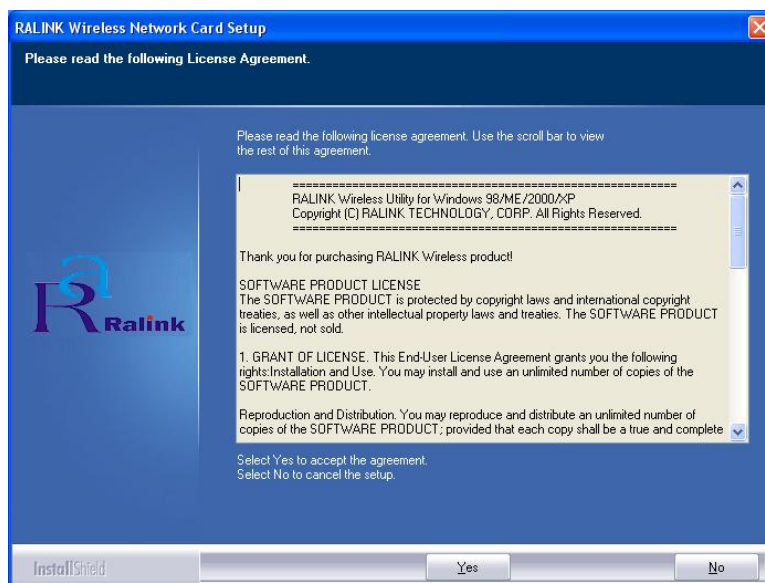


IS_AP_STA_7x_D-1.1.4.0_2500_D-2.1.0.0_RU-1.2.7.0_AU_1.1.4.0_111606_0.0.7.0

double-click the **Setup Program** to begin the installation.

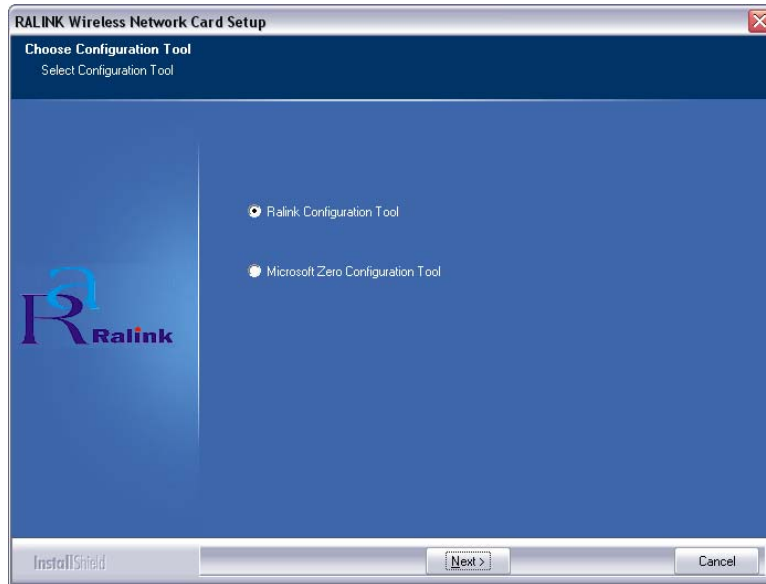
(Example: IS_AP_STA_7x_D-1.1.4.0_2500_D-2.1.0.0_RU-1.2.7.0_AU_1.1.4.0_111606_0.0.7.0.exe)

3. **RALINK Wireless Network Card Setup Wizard** will install the driver on your system. Select **Yes** to accept the License Agreement.

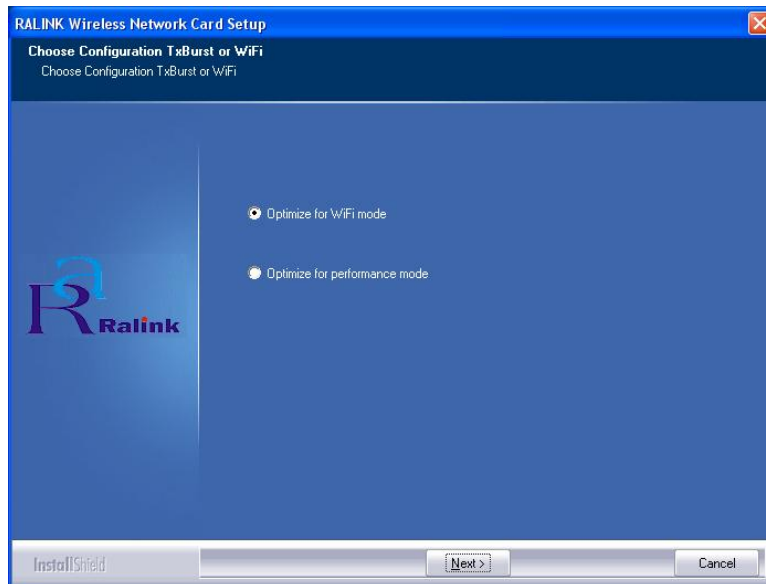


4. Click **Next** to continue.

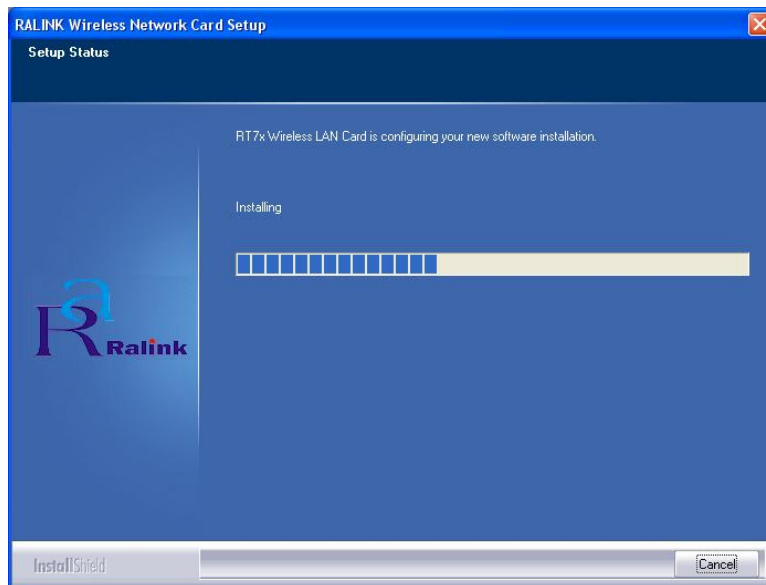
If you have installed the **Windows XP Service Pack 2**. You can use the **Note: Windows Zero Configuration Tool** for Wireless Configuring. Please refer the *Windows XP User's Guide*.



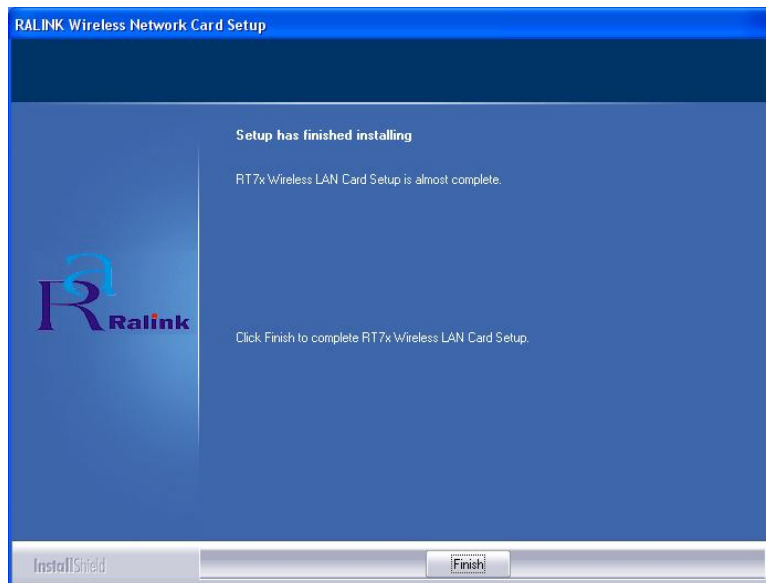
5. Click **Next** to continue.




6. **RALINK Wireless Network Card** is configuring your new software installation,



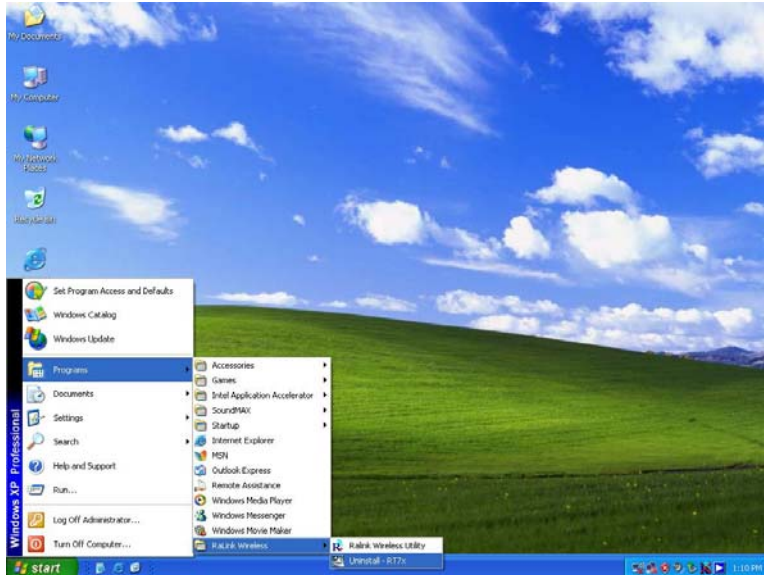
7. The installation is now complete. Please click **Finish**.



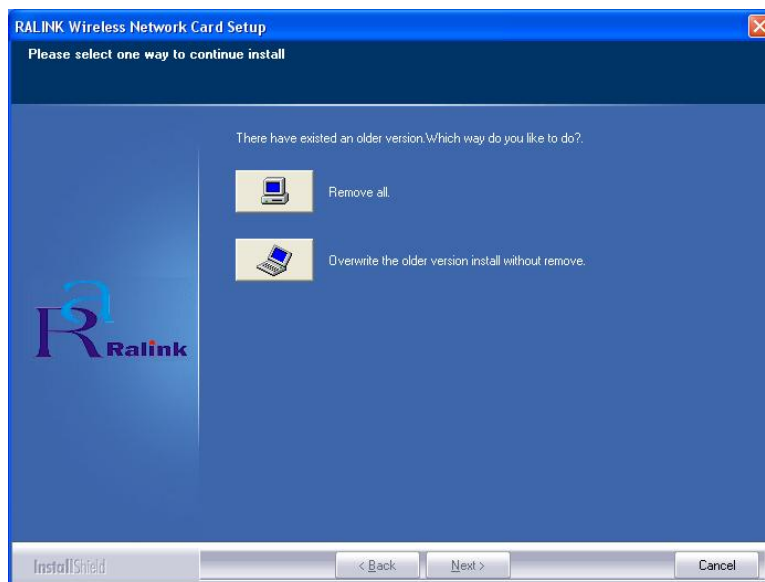
8. When you complete the installation, the utility icon will appear on the system tray (). You could double-click it to configure wireless network settings.

Uninstalling the Wireless LAN Card

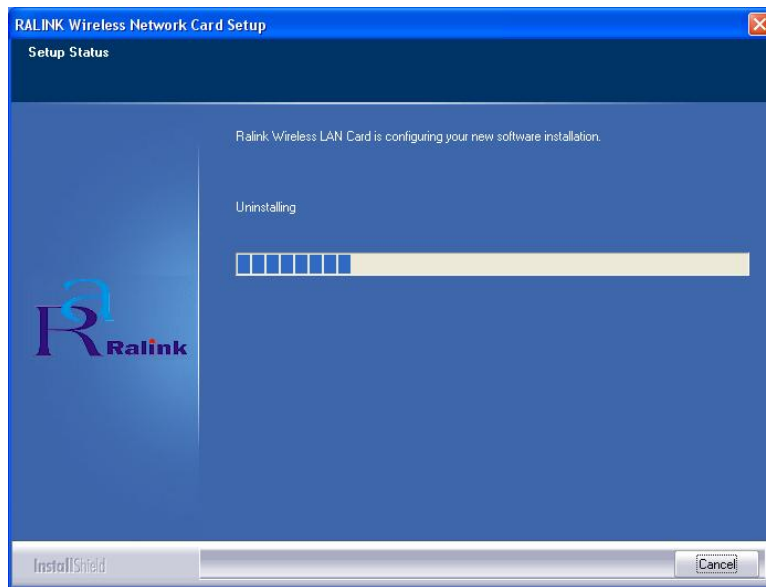
1. For uninstalling the Wireless LAN Card, please go to: **Start** → **Programs** → **Ralink Wireless** under Windows environment. Then click **Uninstall – RT7x**.



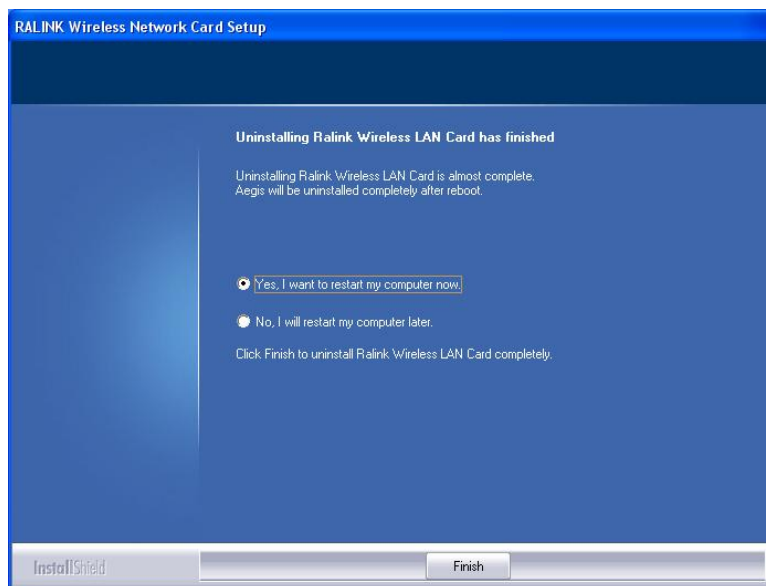
2. Select **Remove all** to uninstall the Wireless LAN Card driver and utility.




3. Wait for removing the driver and utility.



4. After completing the uninstallation, click **Finish** to restart your computer.



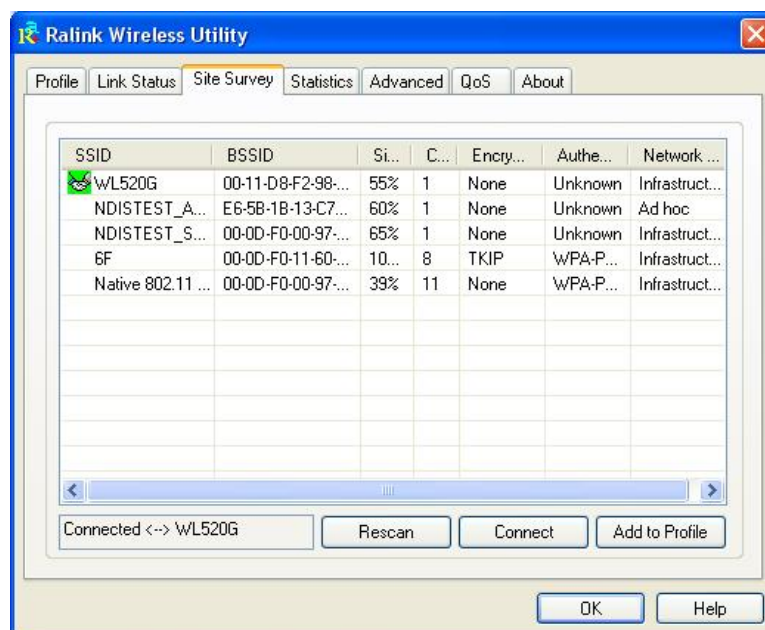
Configuring the Wireless LAN Card

Double-click the utility icon  in your system tray to begin the utility configuration.

Connecting to an existing network

Select **Site Survey** Tab, all available Access Points would be listed.

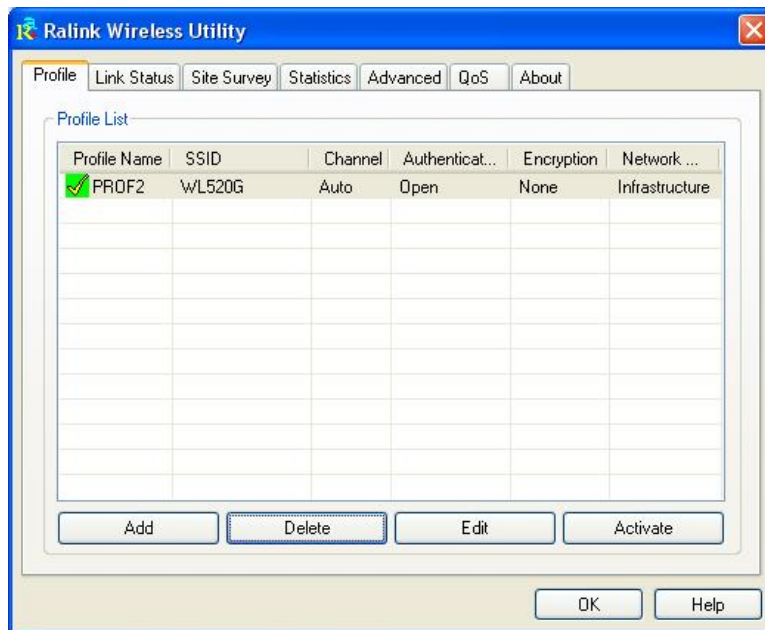
Click on the desired Access Point, and click **Connect** to connect.



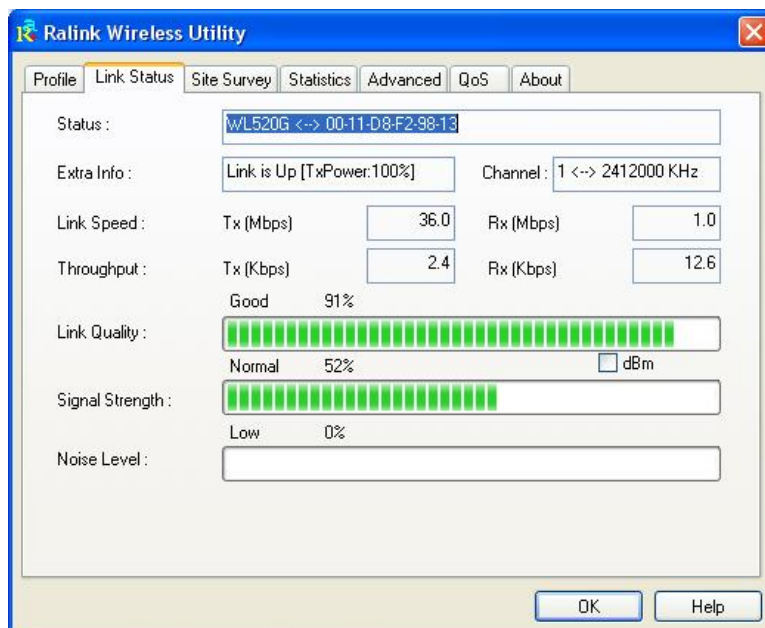
Configuration

- Profile

The **Profile Tab** allows you to set values for all parameters by selecting a previously defined profile. To create a profile, click **Add**, type a profile name and set the corresponding parameters. If one of the profiles is no longer used, you may remove it by clicking the **Delete** button. After changing parameters, click the **Activate** button to take effect. You can have multiple profiles and modify the profile at any time.



- Link Status



Status

The field shows the association status to available Access Point with SSID ↔ MAC address of the Access Point.

Current Channel

Shows the channel on which the connection is made.

Current Tx Rate

Shows the highest transmit rate of the current association.

Throughput (Kbits/sec)

This displays the instantaneous wireless Receive and Transmit throughput in Kbits per second.

Link Quality / Signal Strength

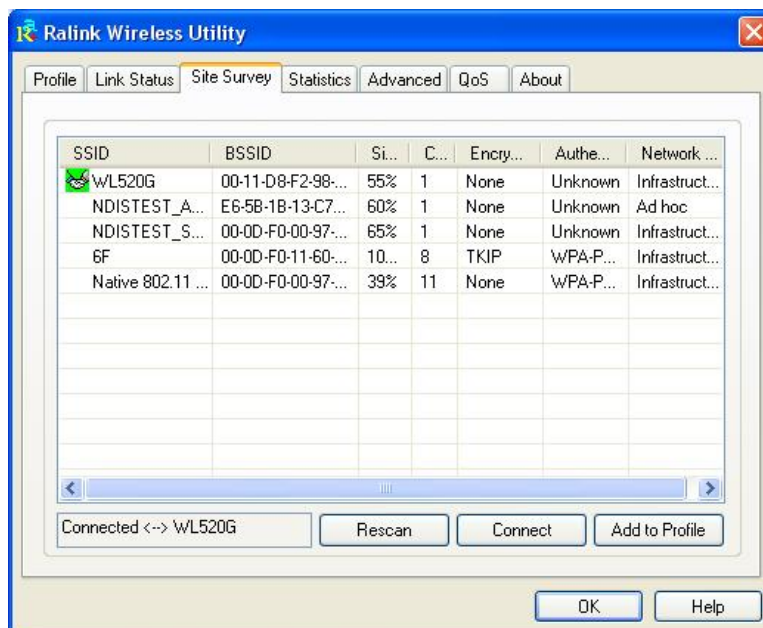
The Link Quality and Signal Strength bar graph is only active when the node is in Infrastructure Mode. The bar graph displays the quality and strength of the link between the node and its Access Point.

- **Site Survey**

Site Survey Tab lists the features of the available Access Points within range of the Wireless Adapter's signal.

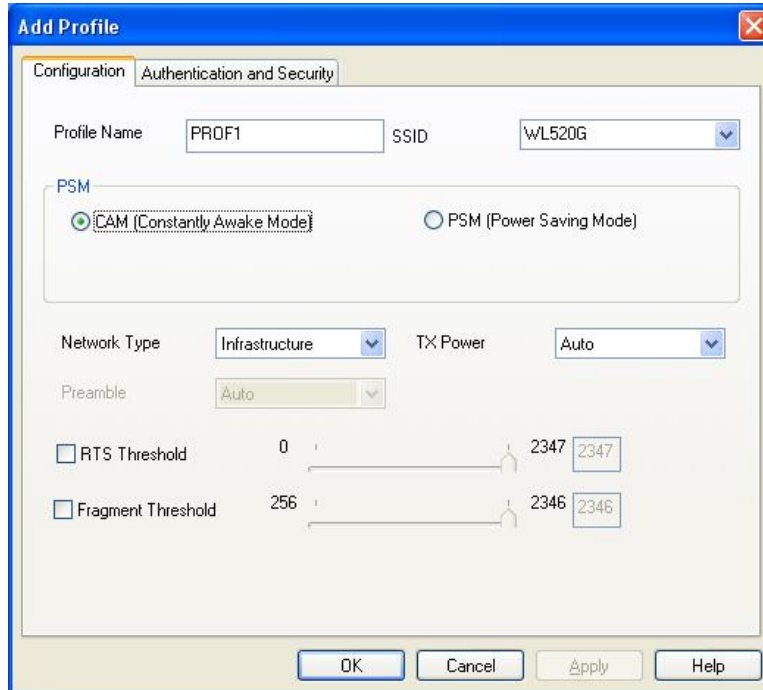
Click on the desired Access Point, and click **Connect** to connect.

You may click **Rescan** to refresh the list.



Add to Profile

You may select an Access Point, and click **Add to Profile** to include it to Profile List. Under **Add Profile** screen / **System Configuration** Tab, you may set **Power Saving Mode**, **Network Type**, **RTS Threshold**, and **Fragment Threshold**.

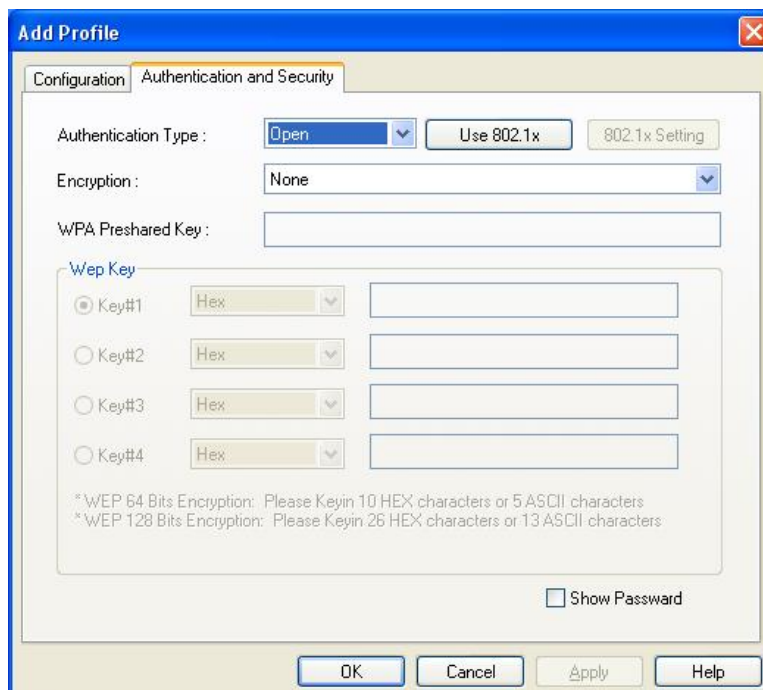


The screenshot shows the 'Add Profile' dialog box with the 'System Configuration' tab selected. The 'Configuration' sub-tab is active. The 'Profile Name' is 'PROF1' and the 'SSID' is 'WL520G'. Under the 'PSM' section, 'CAM (Constantly Awake Mode)' is selected. The 'Network Type' is 'Infrastructure' and 'TX Power' is 'Auto'. The 'Preamble' is 'Auto'. The 'RTS Threshold' is set to 0 and the 'Fragment Threshold' is set to 256. The dialog has 'OK', 'Cancel', 'Apply', and 'Help' buttons at the bottom.

Under **Add Profile** screen / **Authentication vs. Security** Tab, you may set **Authentication Type**, **Encryption Type**, **WPA Pre-Shared Key**, and **Wep Key**.

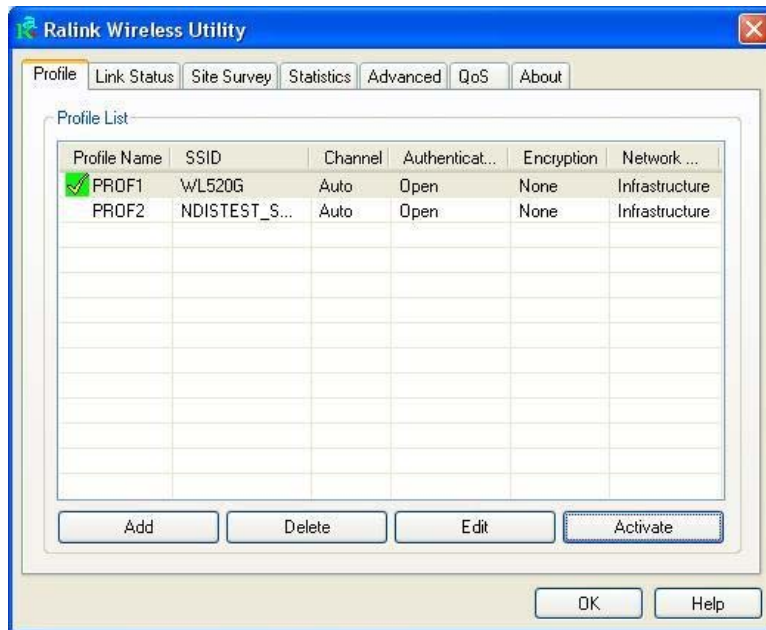
Click **OK** when you have finished the settings.

Or click **Cancel** to abort your new settings for Add to Profile.



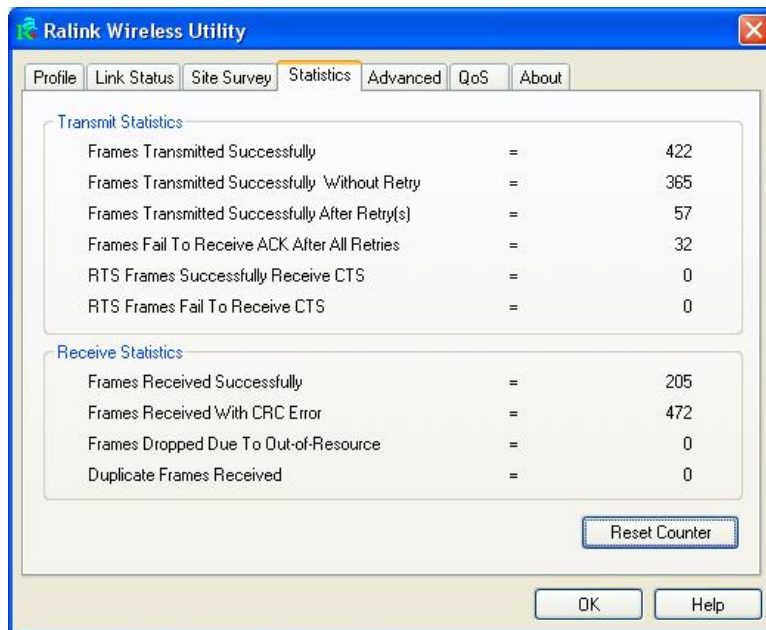
The screenshot shows the 'Add Profile' dialog box with the 'Authentication vs. Security' tab selected. The 'Authentication Type' is 'Open'. There are 'Use 802.1x' and '802.1x Setting' buttons. The 'Encryption' is 'None'. The 'WPA Pre-shared Key' field is empty. Under the 'Wep Key' section, 'Key#1' is selected with a 'Hex' dropdown and an empty text box. There are also 'Key#2', 'Key#3', and 'Key#4' options. At the bottom, there is a 'Show Password' checkbox. The dialog has 'OK', 'Cancel', 'Apply', and 'Help' buttons at the bottom.

After finishing the Add Profile, Check **Profile** Tab, you may find the new added profile in Profile List.



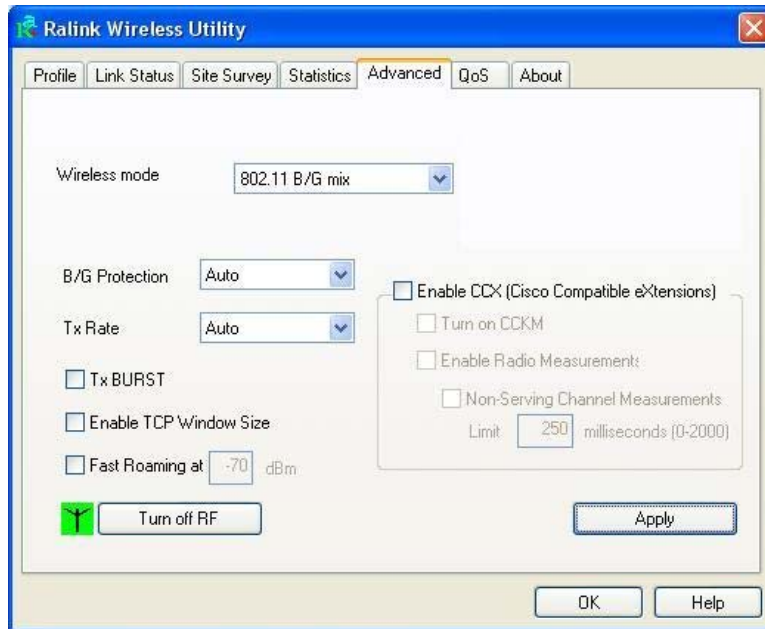
- **Statistics**

The **Statistics** Tab provides information about the Transmit and Receive frames.



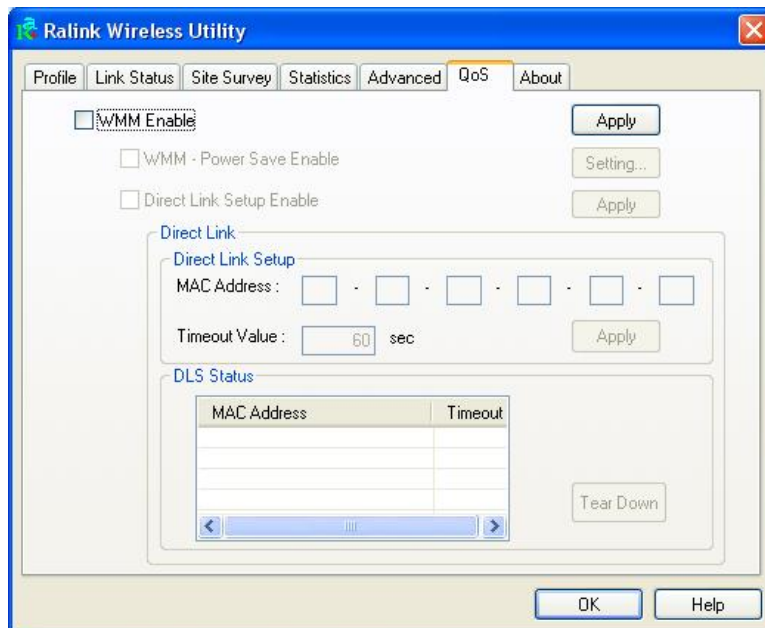
- Advance

The Configuration Utility also offers the advanced configuration for user to set the Wireless Adapter under certain network environment. These advanced options include Wireless mode, B/G Protection, Tx Rate, and Turn On/Off RF.



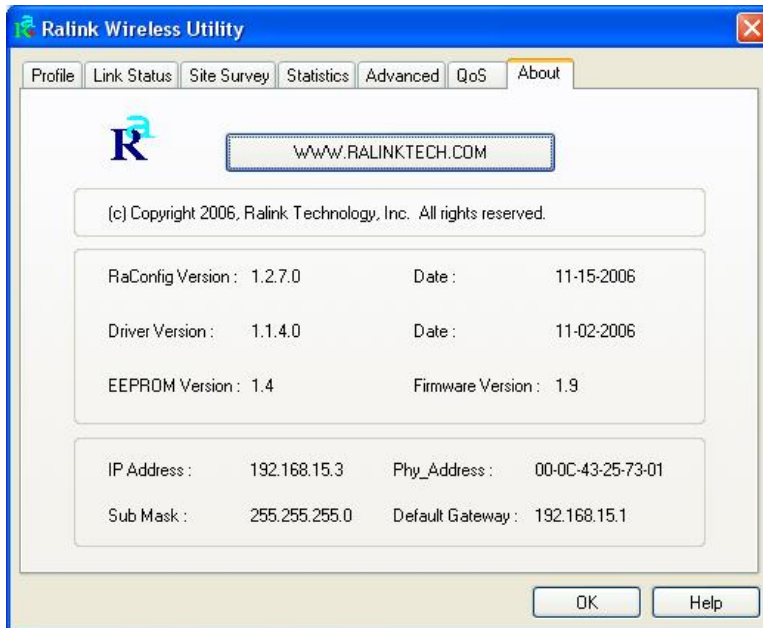
- QoS

QoS Tab shows to provide Power Save and Direct Link.



- About

About Tab shows the product version including the detail of Configuration Utility Version, Driver Version, EEPROM Version, and NIC MAC Address.



Federal Communication Commission Interference Statement

This equipment has been tested and found to comply with the limits for a Class B digital device, pursuant to Part 15 of the FCC Rules. These limits are designed to provide reasonable protection against harmful interference in a residential installation. This equipment generates uses and can radiate radio frequency energy and, if not installed and used in accordance with the instructions, may cause harmful interference to radio communications. However, there is no guarantee that interference will not occur in a particular installation. If this equipment does cause harmful interference to radio or television reception, which can be determined by turning the equipment off and on, the user is encouraged to try to correct the interference by one of the following measures:

- Reorient or relocate the receiving antenna.
- Increase the separation between the equipment and receiver.
- Connect the equipment into an outlet on a circuit different from that to which the receiver is connected.
- Consult the dealer or an experienced radio/TV technician for help.

This device complies with Part 15 of the FCC Rules. Operation is subject to the following two conditions: (1) This device may not cause harmful interference, and (2) this device must accept any interference received, including interference that may cause undesired operation.

FCC Caution: Any changes or modifications not expressly approved by the party responsible for compliance could void the user's authority to operate this equipment. "Qcom declare that Q802XKG is limited in CH1~CH11 by specified firmware controlled in USA."

IMPORTANT NOTE:

FCC Radiation Exposure Statement:

This equipment complies with FCC radiation exposure limits set forth for an uncontrolled environment. To maintain compliance with FCC RF exposure compliance requirements, please follow operation instruction as documented in this manual. This equipment should be installed and operated with minimum distance 20cm between the radiator & your body.

This transmitter must not be co-located or operating in conjunction with any other antenna or transmitter.

This device is intended only for OEM integrators under the following conditions:

1. The antenna must be installed such that 20 cm is maintained between the antenna and users, and
2. The transmitter module may not be co-located with any other transmitter or antenna.
3. **For all products market in US, OEM has to limit the operation channels in CH1 to CH11 for 2.4G band by supplied firmware programming tool. OEM shall not supply any tool or info to the end-user regarding to Regulatory Domain change.**

As long as 3 conditions above are met, further transmitter test will not be required. However, the OEM integrator is still responsible for testing their end-product for any additional compliance requirements required with this module installed (for example: Notebook, Wireless Router...etc.).

IMPORTANT NOTE: In the event that these conditions can not be met (for example certain laptop configurations or co-location with another transmitter), then the FCC authorization is no longer considered valid and the FCC ID can not be used on the final product. In these circumstances, the OEM integrator will be responsible for re-evaluating the end product (including the transmitter) and obtaining a separate FCC authorization.

End Product Labeling

This transmitter module is authorized only for use in device where the antenna may be installed such that 20 cm may be maintained between the antenna and users (for example: Notebook, Wireless Router...etc.) The final end product must be labeled in a visible area with the following: "Contains TX FCC ID: RUJ-Q802XKG".

Manual Information That Must be Included

The OEM integrator has to be aware not to provide information to the end user regarding how to install or remove this RF module in the user's manual of the end products, which integrate this module.

The user's manual for OEM integrators must include the following information in a prominent location "

IMPORTANT NOTE: To comply with FCC RF exposure compliance requirements, the antenna used for this transmitter must be installed to provide a separation distance of at least 20 cm from all persons and must not be co-located or operating in conjunction with any other antenna or transmitter.

NCC 警語:

- **經型式認證合格之低功率射頻電機，非經許可，公司、商號或使用者均不得擅自變更頻率、加大功率或變更原設計之特性及功能。**
- **低功率射頻電機之使用不得影響飛航安全及干擾合法通信；經發現有干擾現象時，應立即停用，並改善至無干擾時方得繼續使用。前項合法通信，指依電信法規定作業之無線電通信。低功率射頻電機須忍受合法通信或工業、科學及醫療用電波輻射性電機設備之干擾。**