

**Bluetooth Slipper™
for GPS Receiver
HI-401BT**

**FEDERAL COMMUNICATIONS COMMISSION
INTERFERENCE STATEMENT**

This equipment has been tested and found to comply with the limits for a Class B digital device, pursuant to Part 15 of the FCC Rules. These limits are designed to provide reasonable protection against harmful interference in a residential installation. This equipment generates, uses and can radiate radio frequency energy and, if not installed and used in accordance with the instructions, may cause harmful interference to radio communications. However, there is no guarantee that interference will not occur in a particular installation. If this equipment does cause harmful interference to radio or television reception, which can be determined by turning the equipment off and on, the user is encouraged to try to correct the interference by one or more of the following measures:

- Reorient or relocate the receiving antenna.
- Increase the separation between the equipment and receiver.
- Connect the equipment into an outlet on a circuit different from that to which the receiver is connected.
- Consult the dealer or an experienced radio/TV technician for help.

CAUTION:

To assure continued FCC compliance:

Any changes or modifications not expressly approved by the grantee of this device could void the user's authority to operate the equipment.

This device and its antenna(s) must not be co-located or operating in conjunction with any other antenna or transmitter.

FCC Label Compliance Statement:

This device complies with Part 15 of the FCC Rules. Operation is subject to the following two conditions: (1) this device may not cause harmful interference, and (2) this device must accept any interference received, including interference that may cause undesired operation.



Bluetooth Slipper™ for GPS Receiver

Table of Contents

Part I Getting Started

| | |
|---------------------------------------|---|
| 1.1 Introductions | 2 |
| 1.2 Bluetooth Slipper Advantage | 2 |

Part II Dimensions

| | |
|--|---|
| 2.1 HI-401BT BT Slipper | 5 |
| 2.2 BT Slipper with multi-mode Foldable GPS receiver | 6 |

Part III Bluetooth Slipper™ with Multi-Mode Foldable GPS receiver

| | |
|-------------------------|---|
| 3.1 Packaging | 7 |
| 3.2 LED Indicator | 8 |

Part IV System Specifications

| | |
|---|----|
| 4.1 Bluetooth Slipper Specifications | 9 |
| 4.2 Multi-mode Foldable GPS receiver Specifications | 10 |

Part VI Get Connected

| | |
|----------------------------------|----|
| 5.1 Notebook Installations | 11 |
| 5.2 PDA Installations | 12 |

1. Getting Started

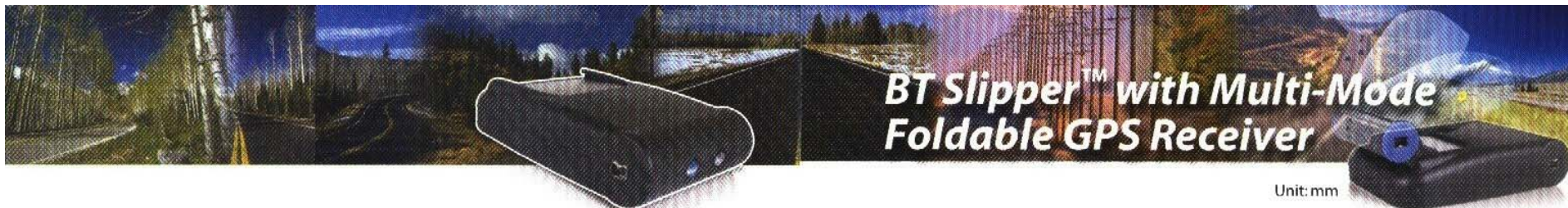
1.1 Introductions

The Bluetooth Slipper™ for GPS receiver is a Bluetooth cradle or docking station of the GPS receiver to transfer the GPS data wirelessly to the host devices, like, notebookPC, PocketPC, Smart Phone, TabletPC, etc. Simply insert the CompactFlash™ interface of the multi-mode foldable GPS receiver into the Bluetooth Slipper™, the two units become a Bluetooth GPS receiver while the GPS receiver receiving the satellites signal and the Bluetooth transmit the GPS data to the mobile device. It'll be a perfect tool for all kinds of global positioning applications, such as, in car, marine, aviation navigation, outdoor activities, places finding, etc. without the wire alllover.

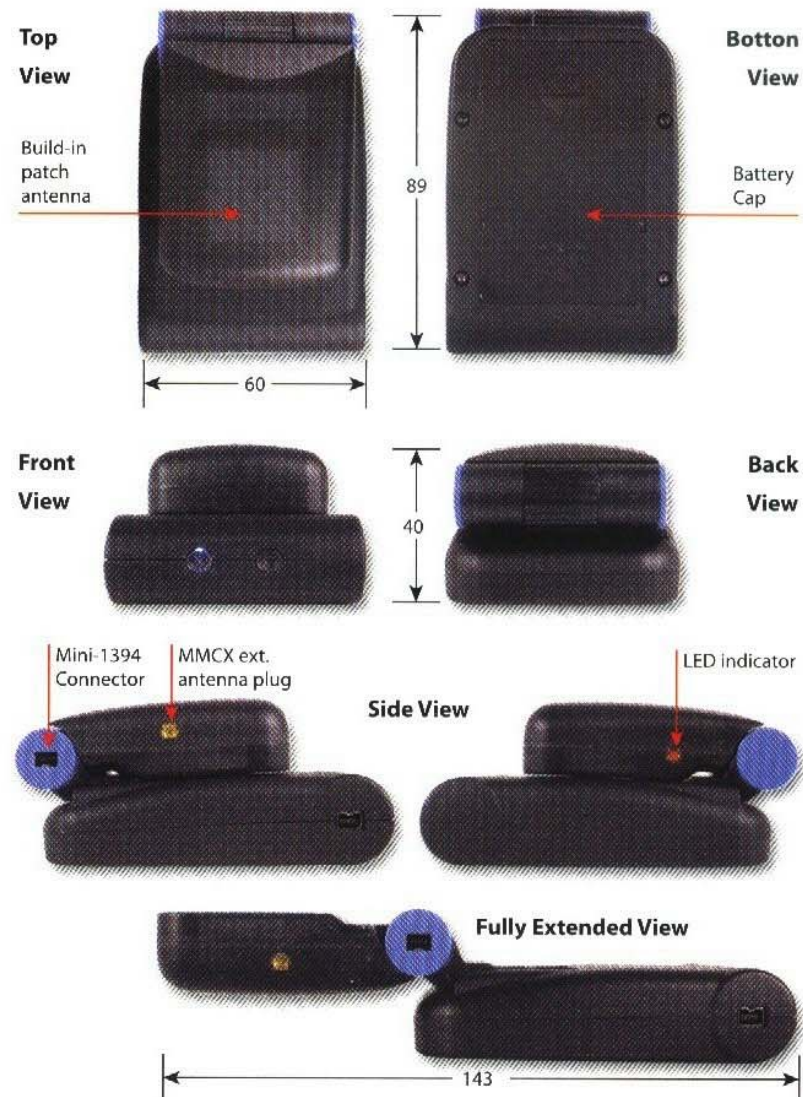
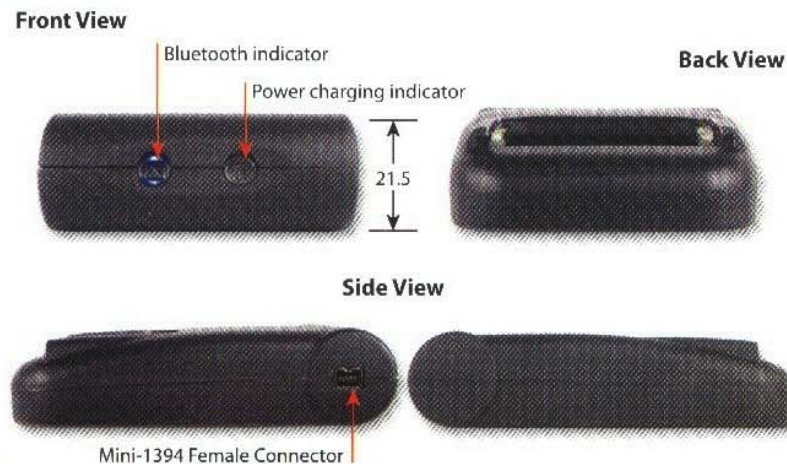
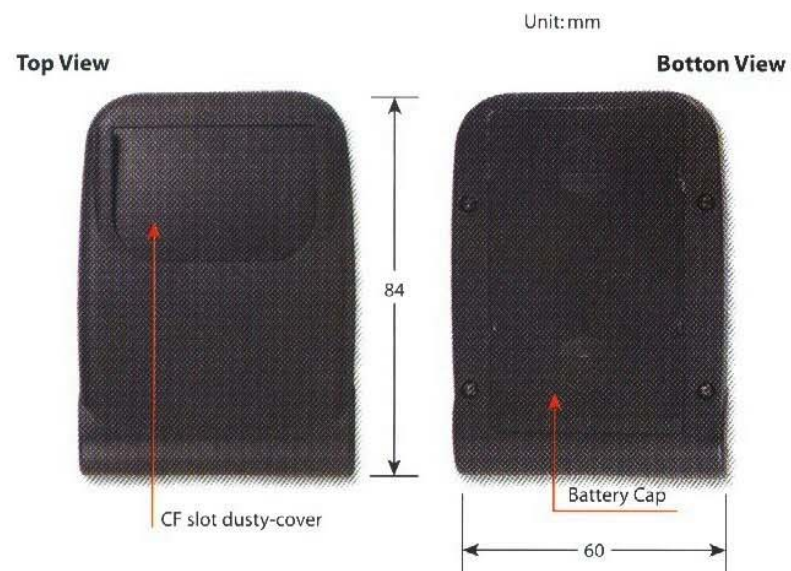
1.2 Bluetooth Slipper™ Advantages:

- 1. Modulize concept:** The multi-mode foldable GPS receiver can be used independently. (please see user manual for the multi-mode foldable GPS receiver)
- 2. Place on right place:** The metal plate on the bottom of the Bluetooth Slipper™ can be attached to the car holder with magnetic. The Bluetooth GPS receiver can be either placed on the back window of the car or on the front windshield Or, with belt clipper, user can clip the BTSlipper on the belt and get the best satellite reception in best angel.
- 3. Switchless design:** To turn on the Bluetooth Slipper™, simply insert and connect the CompactFlash™ part into the CF™ slot and turn off by disconnect the CF™ interface from the CF slot.
- 4. Changeable battery:** User can change the spare battery like mobile phone without interruptting the GPS positioning.
- 5. Multi-function Connector:** The function of the mini-1394 connector on the side are: a) Charging the battery in the Bluetooth Slipper™, b) Solar panel power add, c) Data Logger module.
- 6. Adjustable GPS antenna:** The multi-mode foldable GPS receiver on the Bluetooth Slipper™ can be adjusted in different angle to get the best satellite receptions.
- 7. Long Lasting Battery:** It lasts more than 8 hours for the standard battery. With the solar panel add, the battery can stay active for more than 12 hours depend on the sunlight.





2. Dimensions





3. Bluetooth Slipper™ with Multi-Mode Foldable GPS receiver:

3.1 PACKAGING:

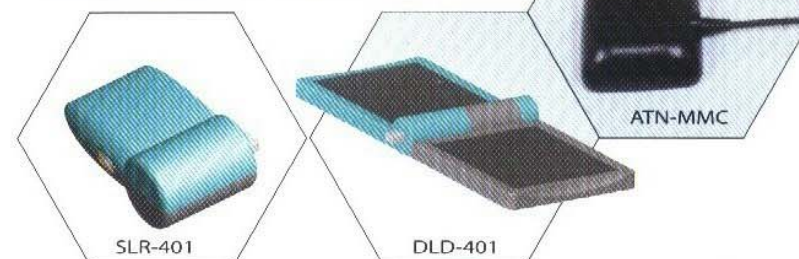
The standard package of the Bluetooth Slipper™ with Multi-Mode Foldable GPS receiver including:

| Model Name | Model # |
|--|----------|
| 1. Bluetooth Slipper™ | HI-401BT |
| 2. Rechargeable Li-Polymer Better 3.7V 1500mAh | 401-BTT |
| 3. Mini-1394 to Cigarette car charger | 401-DCC |
| 4. Mini-1394 to AC power adapter | 401-ACC |
| 5. Magnetic Car Holder | HOD-001 |
| 6. BTSlipper pouch with clipper | LCS-401 |
| 7. BT Slipper User Manual | MAU-401 |
| 8. Mini CDs | CDR-01 |
| 9. Multi-Mode Foldable GPS receiver | HI-303E |
| 10. Mini-1394 to PS/II Connecting cable | CAB-303E |
| 11. Multi-Mode Foldable GPS receiver Pouch | LCS-303 |
| 12. Multi-Mode Foldable GPS receiver User Manual | MAU-303E |



Optional Accessories:

1. Swivel mini-1394 Solar Panel SLR-401
2. Mini-1394 Data Logger Dongle DLD-401
3. MMCX External Antenna (for the Multi-Mode Foldable GPS receiver) ATN-MMC

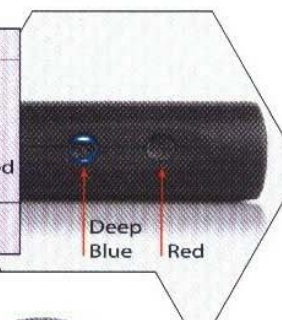


3.2 LED indicators:

On Bluetooth Slipper:

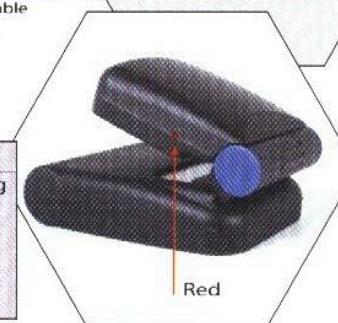
| Symble | LED Color | Light Indication |
|-----------------------------|-----------|--|
| Bluetooth connection Status | Deep Blue | Blinking: The Bluetooth is searching the host device or not connected* Stay On: The Bluetooth have found and connected with the host device |
| Battery | Red | Stay On: The battery charging |

* As soon as the CF interface of multi-mode foldable GPS Connect to the CF slot inside the BT Slipper, the deep blue LED will start blinking



On Multi-Mode Foldable GPS Receiver:

| LED Color | Light Indication |
|------------------|---|
| Blinking: | The GPS receiver is searching the satellite signals. |
| Stay On: | The GPS Receiver have fixed more than 4 satellites and in 3D positioning fix. |





4. System Specifications:

4.1 Bluetooth Slipper Specifications:

Bluetooth V1.1 Compliances

| | |
|------------------------|--|
| Frequency Range: | 2.4 ~ 2.4835 GHz unlicensed ISM band |
| Interface: | USB/UART/SPI |
| Receiver Sensitivity: | -80 dBm @ 0.1% BER |
| Transmitting Power: | Class 2 -6 dBm ~ +4 dBm |
| RF Input Impedance: | 50 ohms |
| Frequency hopping: | 1600hops/sec. |
| Baseband Crystal OSC: | 16MHz |
| Data Rate: | Up to 723Kb/s |
| Operating Temperature: | -20°C ~ +80°C |
| Storage Temperature: | -30°C ~ +90°C |
| Supply Voltage: | Build-in Rechargeable Battery (3.7V 1500mAh) |
| Operation Time: | 8 hrs after fully charged in continue mode |
| Transmitting Range: | 10 meters (Typical) |
| Power Consumption: | 45 mA (Typical) |

4.2 Multi-mode Foldable GPS receiver Specifications:

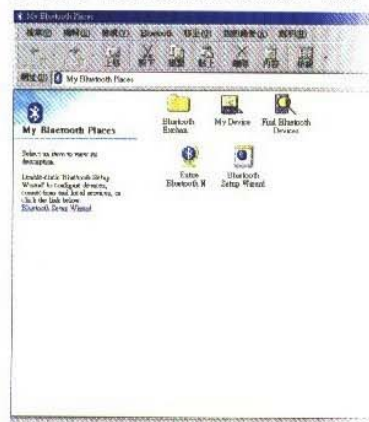
| | | |
|------------------------|--|-----------------------------|
| Interfaces: | Compact Flash type 1 & Mini-1394 | |
| Protocol: | NMEA0183 GGA, GSA, GSV, RMC, VTG, GLL | |
| Baud Rate: | 1 Hz | |
| Datum: | WGS84 | |
| Channel: | 12 channel all-in-view tracking | |
| Frequency: | L1, 1575.42MHz | |
| Hot Start: | 8 sec. Average | |
| Warm Start: | 38 sec. Average | |
| Cold Start: | 48 sec. Average | |
| Reacquisition Time: | 100 ms | |
| Position Accuracy: | 15m 2D RMS, SA off | |
| Maximum Altitude: | 18,000m | |
| Maximum Velocity: | 515m/s | |
| Voltage: | DC 3.3V+-10% | |
| Power consumption: | 120mA continuous mode | |
| Antenna Type: | Built-in active antenna | |
| External Antenna | MMCX (Optional) | |
| Connector: | | |
| Dimension: | Fold | 68 (L) x 48 (W) x 24 (H)mm |
| | Unfold | 120 (L) x 48 (W) x 21 (H)mm |
| LED Indicator: | 3D Positioning (on) or Searching GPS (blinking) | |
| Operating Temperature: | -10° to +70° | |
| Storage Temperature: | -40° to +85° | |
| Operation Humidity: | 95%, Non-Condensing | |



5. Get Connected; Installation Guide

5.1 Notebook Installations

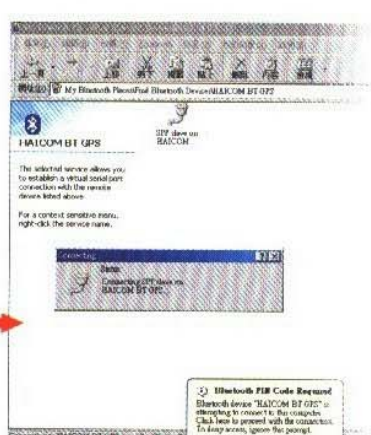
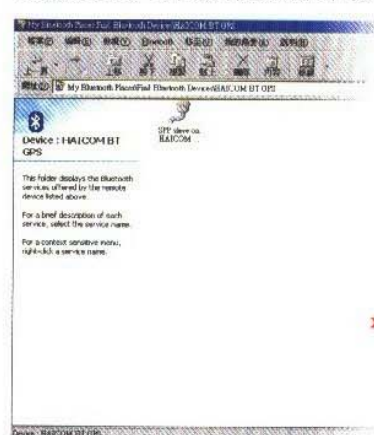
Run "My Bluetooth Places" and Double Click the "Find Bluetooth Devices" icon



Double Click "HAICOM BT GPS"



Double Click "SPP on HAICOM BT GPS"



Key in pin code: 0000

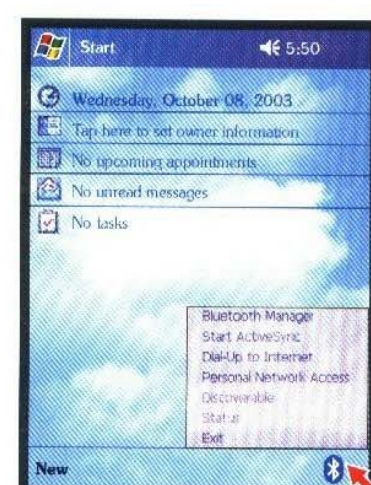
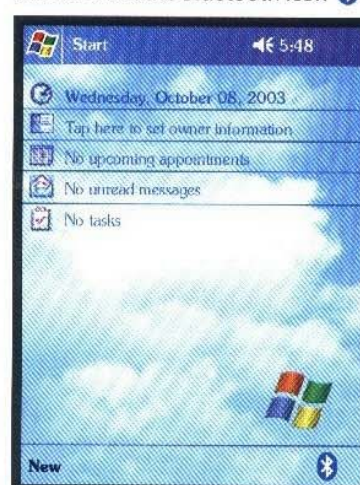


Connected



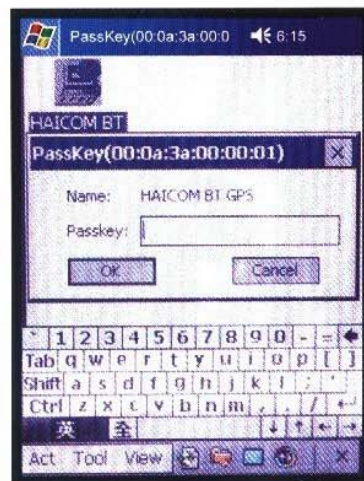
5.2 PDA Installations

Double Click the Bluetooth icon

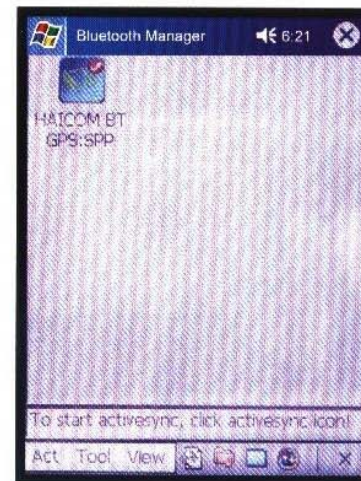




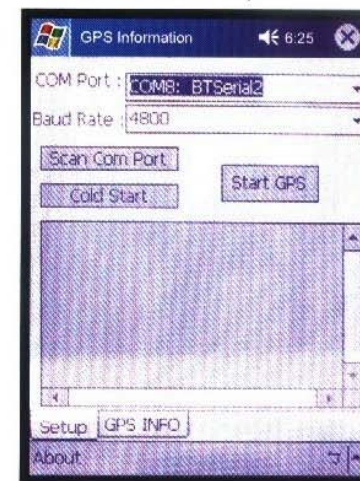
Double click "HAICOM BT GPS"



For Connected with device



Select the correct com port



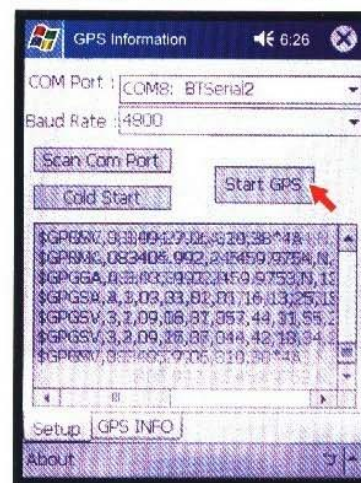
Key in pin code



Found the host device



Start GPS, NMEA message inflow



More satellites info

