

Figure 11
Bluetooth Slipper, Internal View (Removed Front Cover)



Figure 12
Bluetooth Slipper, Internal View (Control Board, Front View)

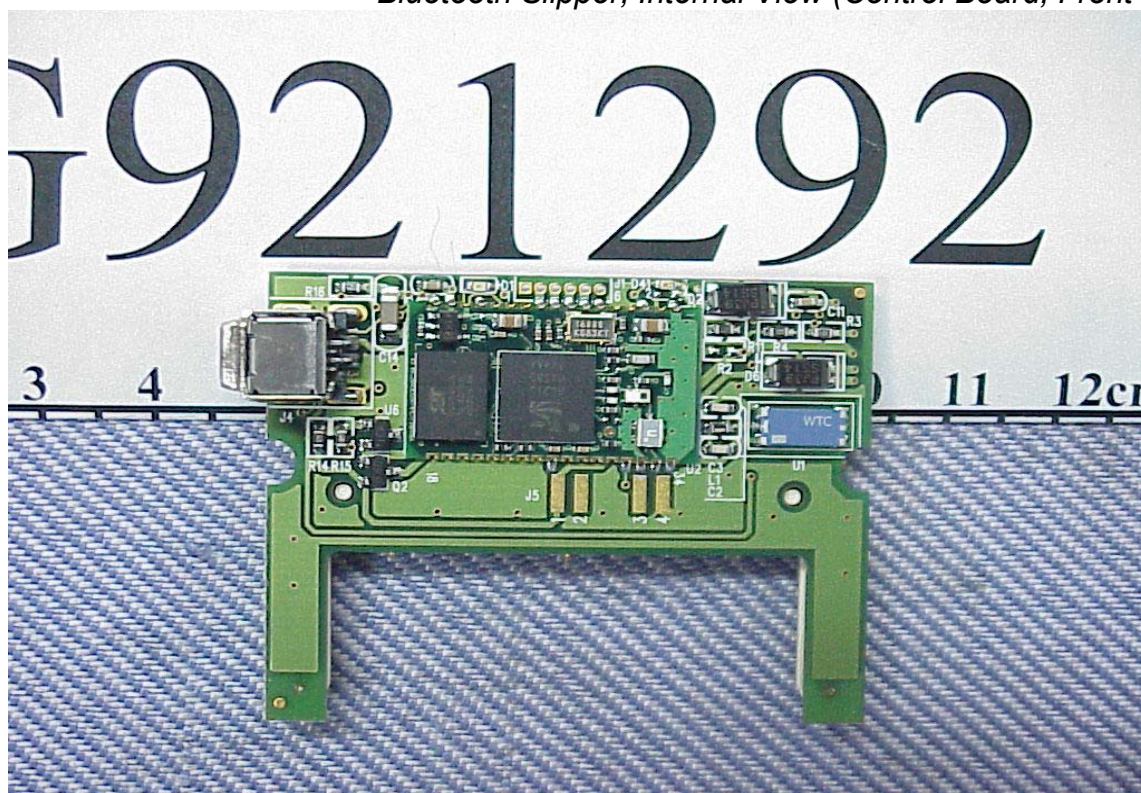


Figure 13
Bluetooth Slipper, Internal View (Control Board, Back View)

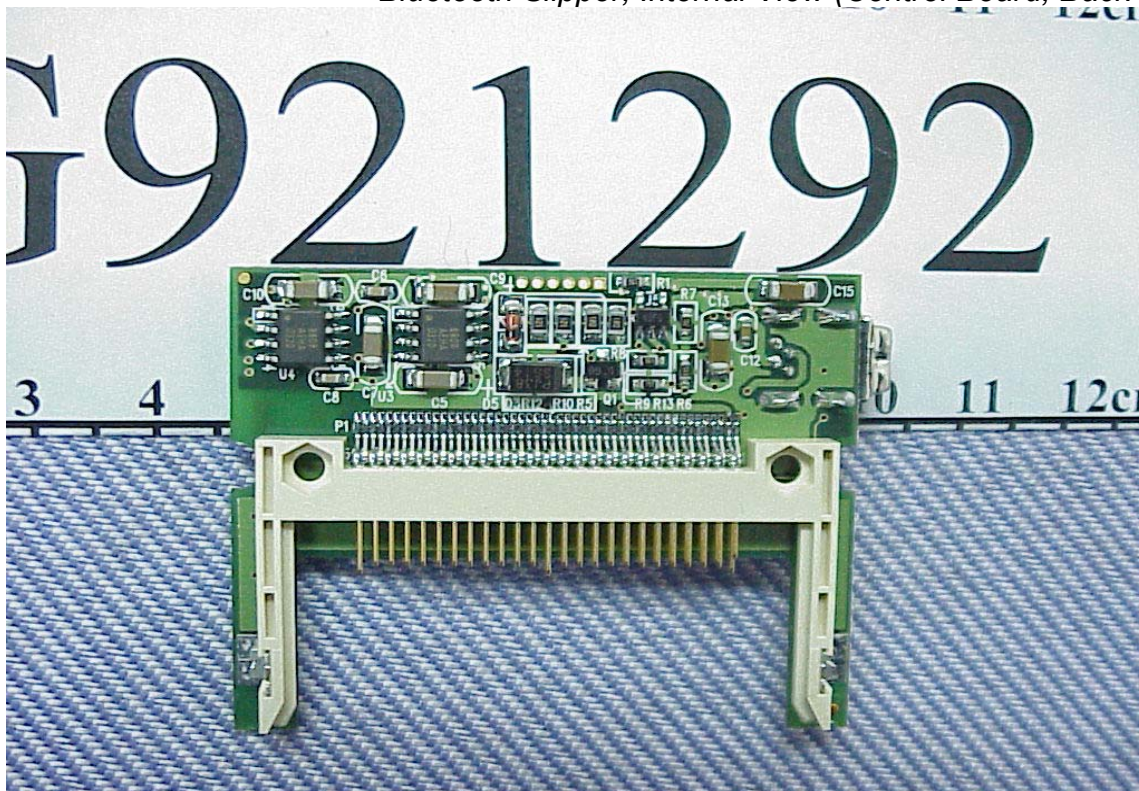


Figure 14
Multi-Mode Foldable GPS Receiver, Internal View



Figure 15

Multi-Mode Foldable GPS Receiver, Internal View (PCMCIA Card, Front View)

Figure 16

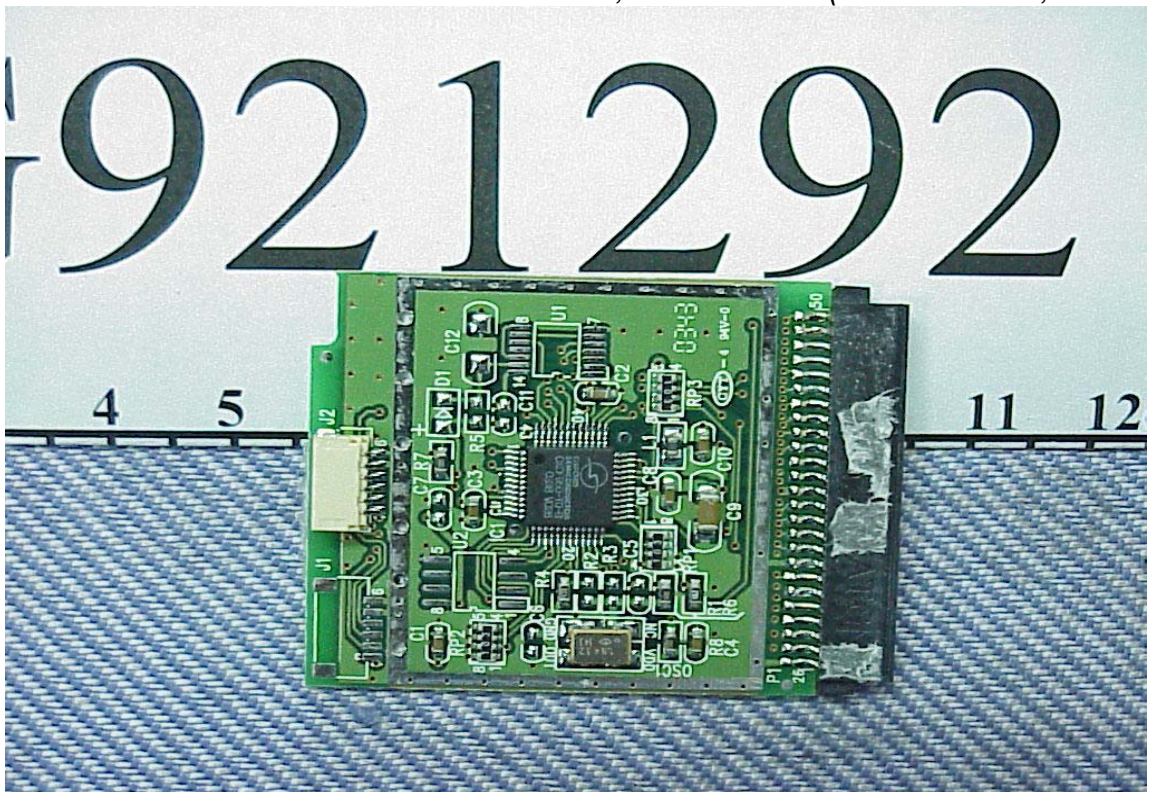
Multi-Mode Foldable GPS Receiver, Internal View (PCMCIA Card, Back View)

Figure 17

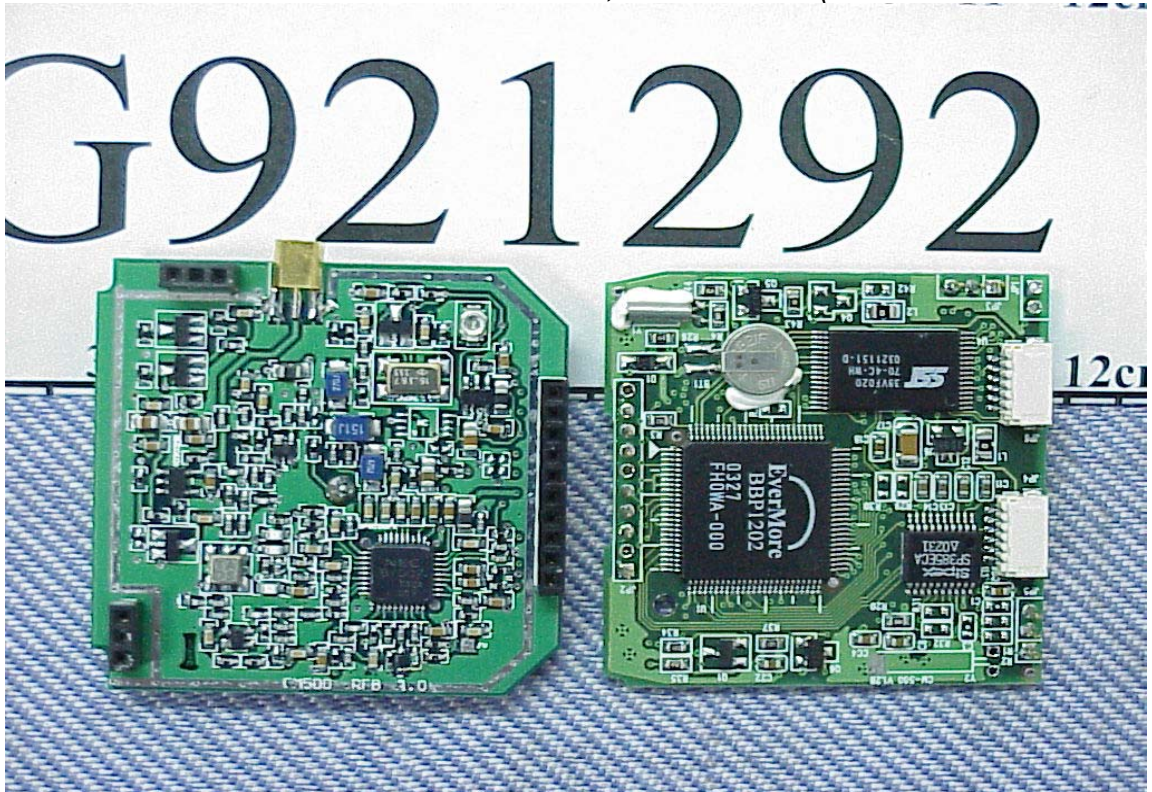
Multi-Mode Foldable GPS Receiver, Internal View (Main P.C. & RF. PC Board)

Figure 18

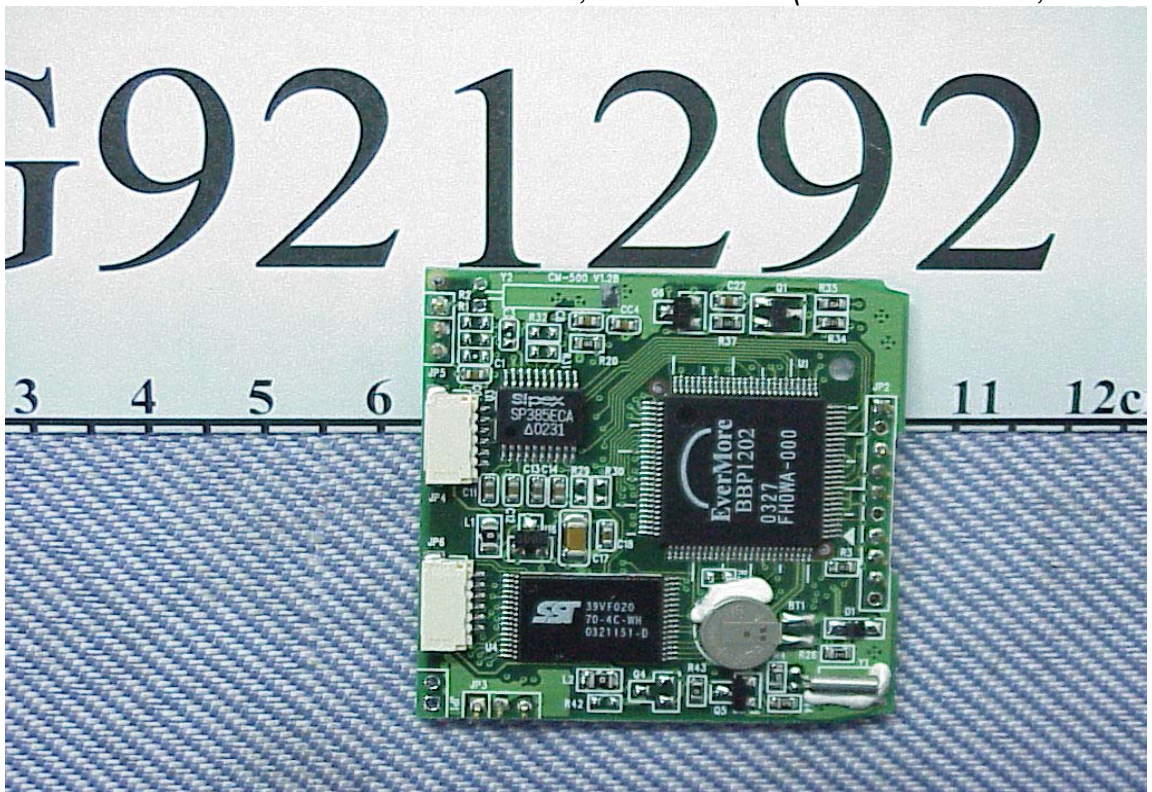
Multi-Mode Foldable GPS Receiver, Internal View (Main P.C. Board, Front View)

Figure 19
Multi-Mode Foldable GPS Receiver, Internal View (Main P.C. Board, Back View)

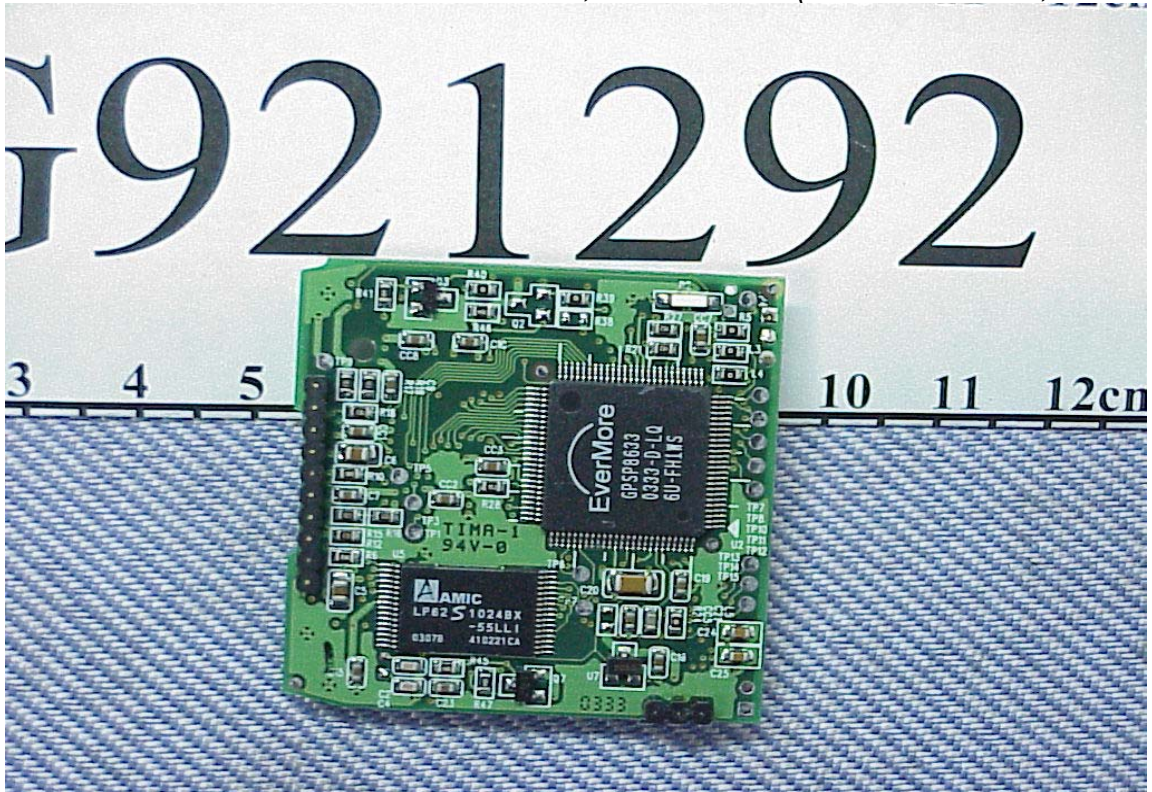


Figure 20
Multi-Mode Foldable GPS Receiver, Internal View (RF P.C. Board, Back View)

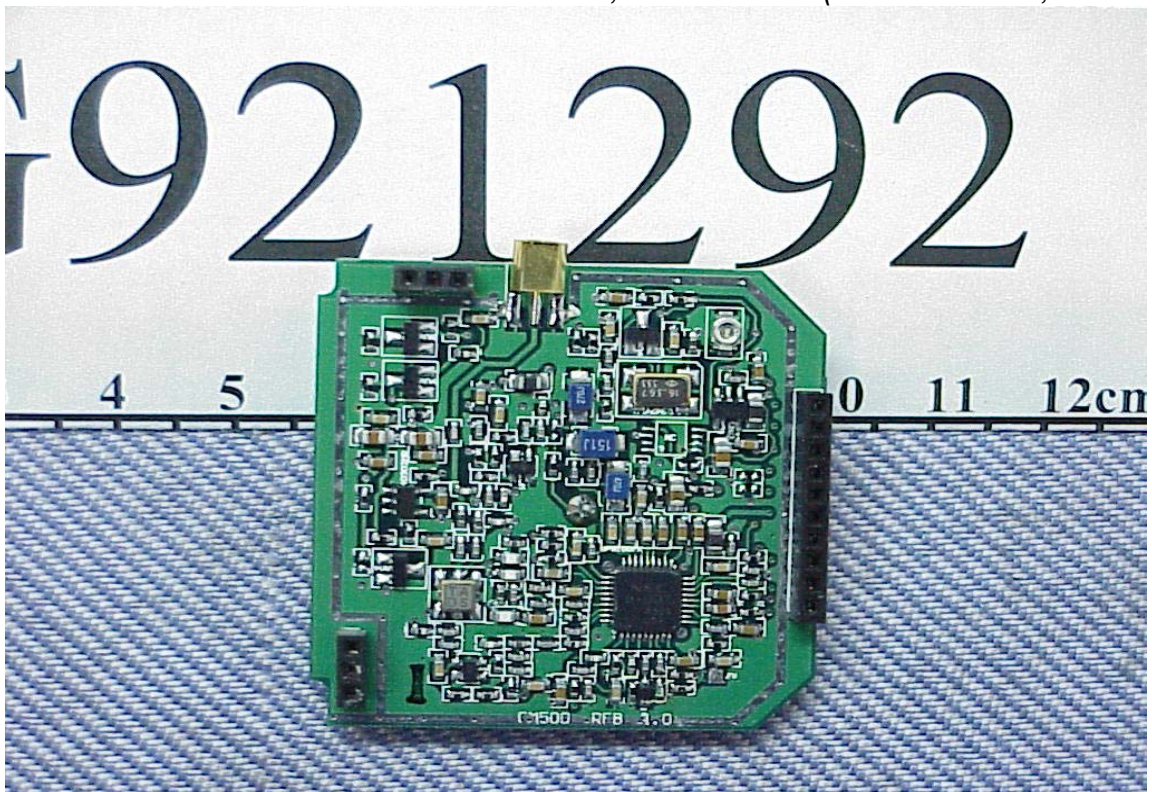


Figure 21
Multi-Mode Foldable GPS Receiver, Internal View (RF P.C. Board, Back View)

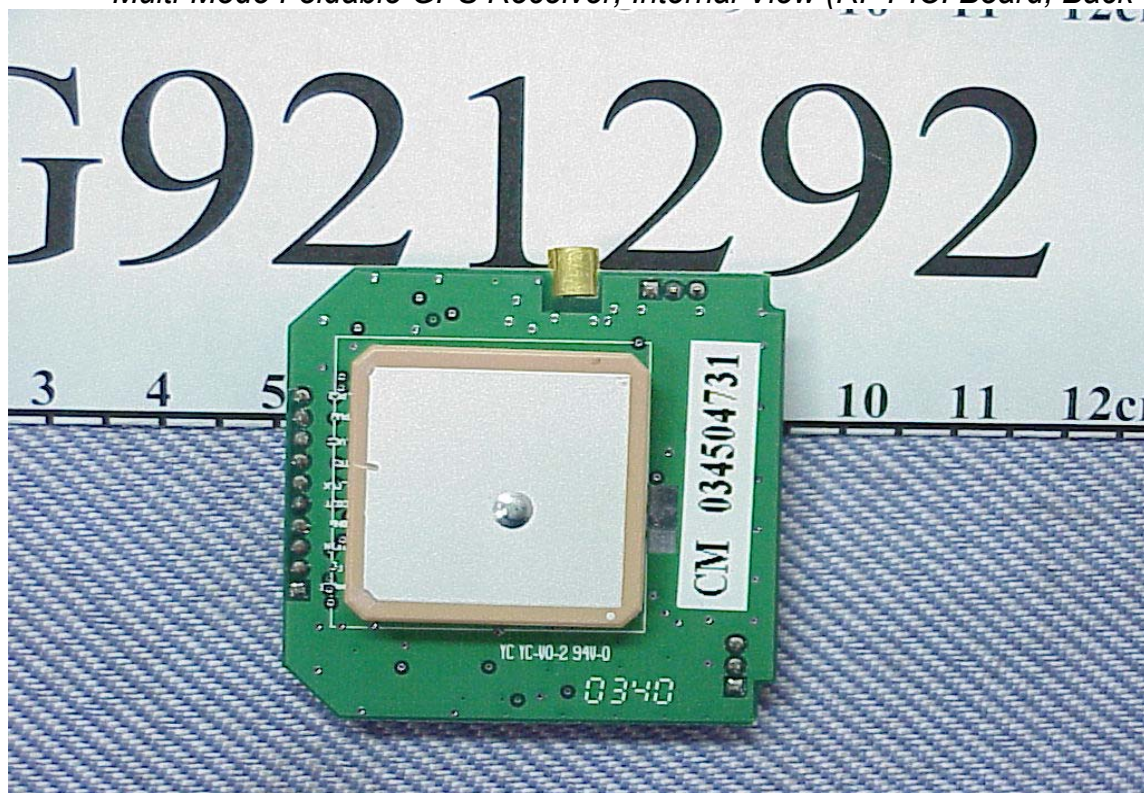


Figure 22
Power Adapter (Removed Cover, PCB Board)

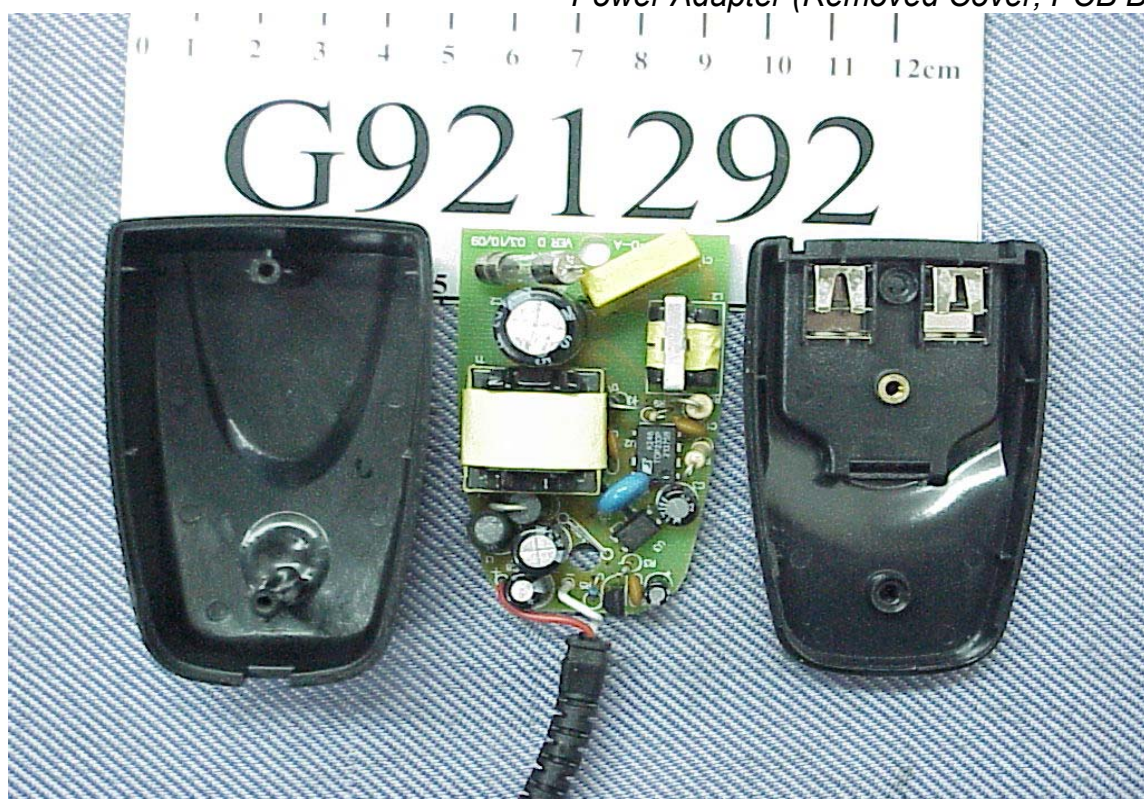


Figure 23
Power Adapter (PCB Board, Component View)

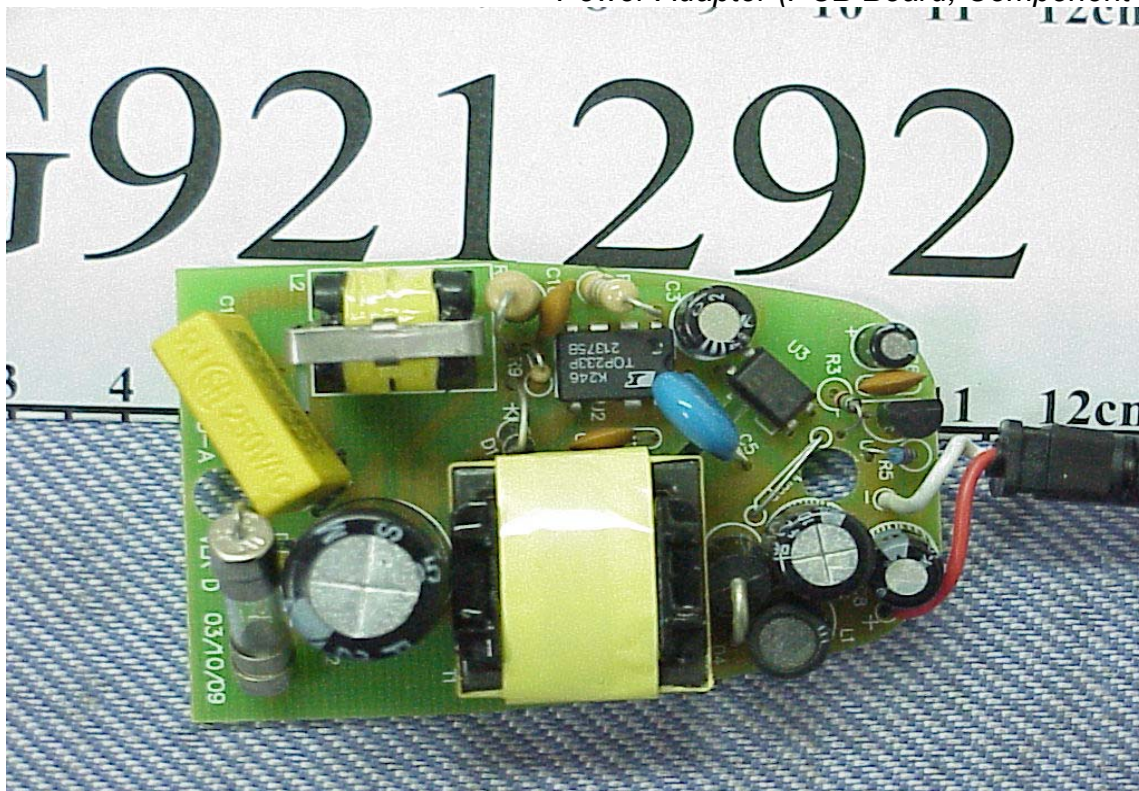


Figure 24
Power Adapter (PCB Board, Foil View)

