



HOW to USE Option#2

11



1. Decoder with smart (PDA) phone:

- ▶ 1. The smart (PDA) phone calling or communicate with the HI-601VT
- ▶ 2. Voice message to the decoder
- ▶ 3. Voice message was transferred into standard digital NMEA protocol data
- ▶ 4. The NMEA data was transmitted back to the smart (PDA) phone via PDA cable



12

HOW to USE Option#3

USB port from LaptopPC



1. Decoder with smart (PDA) phone and laptopPC (or desktopPC):

- ▶ 1. The smart (PDA) phone calling or communicate with the HI-601VT
- ▶ 2. Voice message to the decoder
- ▶ 3. Voice message was transferred into standard digital NMEA protocol data
- ▶ 4. The NMEA data was transmitted to the laptopPC via USB cable



HOW to USE Option#4

13



1. Decoder with mobile phone and

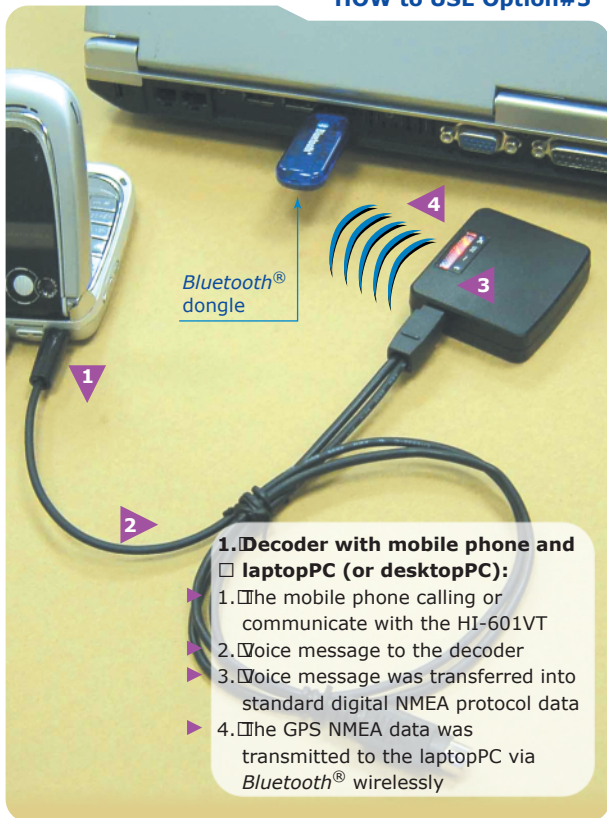
□ laptopPC (or desktopPC):

- ▶ 1. The mobile phone calling or communicate with the HI-601VT
- ▶ 2. Voice message to the decoder
- ▶ 3. Voice message was transferred into standard digital NMEA protocol data
- ▶ 4. The NMEA data was transmitted to the laptopPC via USB cable



14

HOW to USE Option#5



1. Decoder with mobile phone and □ laptopPC (or desktopPC):

- ▶ 1. □The mobile phone calling or communicate with the HI-601VT
- ▶ 2. □Voice message to the decoder
- ▶ 3. □Voice message was transferred into standard digital NMEA protocol data
- ▶ 4. □The GPS NMEA data was transmitted to the laptopPC via Bluetooth® wirelessly