

FCC ID: RU6-OIPC1

Cloud IP Camera

FUJIKAM

Quick Installation Guide



Safety Instruction

These instructions are intended to ensure that user can use the product correctly to avoid danger or property loss.

The precaution measure is divided into “Warnings” and “Cautions”

Warnings: Serious injury or death may occur if any of the warnings are neglected.

Cautions: Injury or equipment damage may occur if any of the cautions are neglected.

	
Warnings Follow these safeguards to prevent serious injury or death.	Cautions Follow these precautions to prevent potential injury or material damage.



Warnings

- Proper configuration of all passwords and other security settings is the responsibility of the installer and/or end-user.
- In the use of the product, you must be in strict compliance with the electrical safety regulations of the nation and region. Please refer to technical specifications for detailed information.
- Input voltage should meet both the SELV (Safety Extra Low Voltage) and the Limited Power Source with 100 to 240 VAC or 5 VDC according to the IEC60950-1 standard. Please refer to technical specifications for detailed information.
- Do not connect several devices to one power adapter as adapter overload may cause over-heating or a fire hazard.
- Please make sure that the plug is firmly connected to the power socket.
- If smoke, odor or noise rise from the device, turn off the power at once and unplug the power cable, and then please contact the service center.



Cautions

Information in this document is subject to change without notice. As our product are subject to continuous improvement,our company reserve the right to modify product design, specifications and prices without notice.

Contents

English	01
Deutsch	05
Français	09
Italiano	13
Español	17
日本語	21

1. Install 'MIPC' APP

a. Scan 'MIPC' APP QR code.



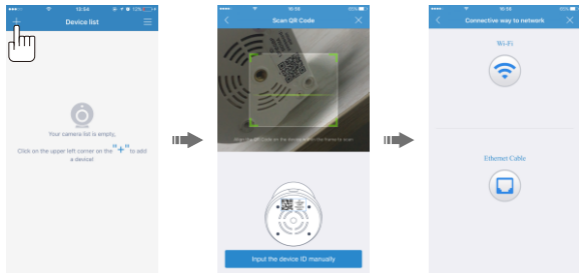
b. Download 'MIPC' APP from APP Store(iOS) or Play Store(Android).

Note: PC users please download our APP: www.mipcm.com/download.

2. Add camera to account

a. Plug in device, open the APP, register an account, and log in.

b. Click on '+' in top left corner, select the device model, scan the QR code and add the device ID, and enter the network connection interface.



3. Select network connection

You could choose either Wi-Fi or Ethernet to connect device, but some of devices only support one way.

a. Wi-Fi connection

Click the Wi-Fi connection icon and press the camera RESET button to enter the Wi-Fi configuration mode. Input the Wi-Fi password, the connection should be successful!



- Note:** ① Press RESET button, hold for 1-2 seconds to enter the Wi-Fi configuration, long press 10-12seconds to restore the factory settings.
② If the Wi-Fi configuration fails, try an ethernet connection.

b. Ethernet connection

Click on the Ethernet connection icon, connect the network cable, change the password, and set Wi-Fi.



4. SD card video recording setup

After you insert the SD card (need to be purchased separately) into the camera, you need to go to the 'Record' setting to enable video recording. (Note: SD card should not be inserted into or removed from the camera while the camera is powered on; And SD card will be automatically formatted when inserted into the camera).

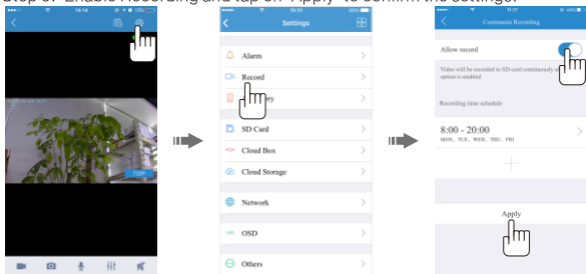
Step 1: Enter the camera.

Step 2: Enter the camera 'settings'.

Step 3: Enter the 'Record' setting.

Step 4: Select Recording mode (Continuous Recording/Event Recording).

Step 5: Enable Recording and tap on 'Apply' to confirm the settings.



FAQ

1. What if the camera cannot connect to Wi-Fi?

- A:
- Please confirm the Wi-Fi password is entered correctly.
 - Please confirm the mobile phone is connected to 2.4G Wi-Fi, camera does not support 5G Wi-Fi.
 - Keep the phone as close to the camera as possible when Connect the camera.
 - If the connection fails, please try to config the Wi-Fi after the wired connection.

2. After inserting SD card successfully, but the camera not have any record?

- A:
- SD card needs to be inserted when the camera is off.
 - After the camera is inserted with SD card, the video recording function needs to be turned on manually, you can refer to the operation guide of recording on SD card.

3. Phone APP can't receive the alarm notice?

- A:
- The camera has motion detection and alarm function, but it needs manual setup. Steps: enter the camera 'settings', select 'alarm', enable the motion detection, click 'apply'.

4. Camera is installed on the ceiling, how to set the image reversal ?

- A:
- After the camera installation, enter the camera 'settings', select 'others', enable the device flip button, click ''apply'.

5. How can I see the recorded video? Can I put the SD card on the computer to playback?

- A:
- For your privacy and security, video files are encrypted, it must be playback through mobile phone APP or computer APP, and it cannot be played directly on the computer. You need to export the video through SDtool, a special video export tool. The SDtool can be downloaded from www.mipcm.com.

6. How does the camera restore the factory settings?

- A:
- You can restore the factory settings by pressing the camera Reset button for more than 10 seconds.

1. MIPC App Installation

a. Scannen Sie den QR Code der MIPC App.



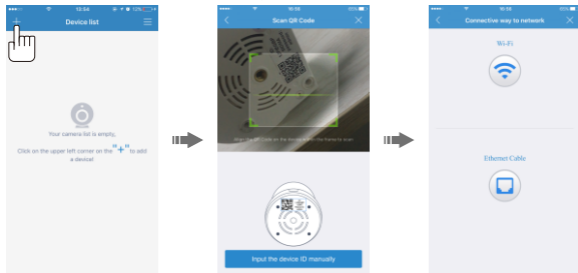
b. Suchen Sie nach MIPC im App Store (iOS) oder Play Store (Android).

Hinweis: PC-Nutzer laden die APP unter: www.mipcm.com/download herunter.

2. Hinzufügen der Kamera in der App

a. Starten Sie die MIPC App, registrieren Sie sich mit einem neuen Account und loggen Sie sich ein.

b. Unter Verzeichnis der Geräte, klicken Sie auf das + Symbol in der oberen Linken Ecke. Scannen Sie dann den QR Code der Kamera.



3. Netzwerk Verbindung

Sie können wählen entweder Wi-Fi oder ethernet zu verbinden gerät, aber einige von geräte nur unterstützung eine weg.