

Cloud IP Camera

Quick Installation Guide

Prompt: Our APP will be in continuously update for better users experience. The actual operation interface may not accordance with this manual, please operate according to APP.

FCC statement

This device complies with Part 15 of the FCC Rules: Operation is subject to the following two conditions:

1. This device may not cause harmful interference and
2. This device must accept any interference that is received, including any interference that may cause undesired operation.

RF exposure warning :

This equipment complies with FCC radiation exposure limits set forth for an uncontrolled environment. This equipment shall be installed and operated with minimum distance 20cm between the radiator & body.

This device is acting as slave and operating in the 2.4 GHz (2412 ~2462 MHz)band.

Ad Hoc function is supported but not able to operate on non-US frequencies. Do not use the device with the environment which below minimum -30°C or maximum over 50.

NOTE: This equipment has been tested and found to comply with the limits for a Class B digital device, pursuant to part 15 of the FCC Rules. These limits are designed to provide reasonable protection against harmful interference in a residential installation. This equipment generates uses and can radiate radio frequency energy and, if not installed and used in accordance with the instructions, may cause harmful

interference to radio communications. However, there is no guarantee that interference will not occur in a particular installation. If this equipment does cause harmful interference to radio or television reception, which can be determined by turning the equipment off and on, the user is encouraged to try to correct the interference by one or more of the following measures:

- Reorient or relocate the receiving antenna.
- Increase the separation between the equipment and receiver.
- Connect the equipment into an outlet on a circuit different from that to which the receiver is connected.
- Consult the dealer or an experienced radio/TV technician for help.

Changes or modifications to this unit not expressly approved by the party responsible for compliance could void the user's authority to operate the equipment.

Safety Instruction

These instructions are intended to ensure that user can use the product, correctly to avoid danger or property loss.

Warnings

1. Proper configuration of all passwords and other security settings is the responsibility of the installer and end-user.
2. In the use of the product, you must be in strict compliance with the electrical safety regulations of the nation and region. Please refer to technical specifications for detailed information.
3. Input voltage should meet both the SELV (Safety Extra Low Voltage) and the Limited Power Source with 100 to 240 VAC or 5 VDC according to the IEC60950-1 standard. Please refer to technical specifications for detailed information.
4. Do not connect several devices to one power adapter as adapter overload may cause over-heating or a fire hazard.
5. Please make sure that the plug is firmly connected to the power socket.
6. If smoke, odor or noise rise from the device, turn off the power at once and unplug the power cable, and then please contact the service center.

1. Install "MIPC" APP

Method I : Download APP in: www.mipcm.com/download;

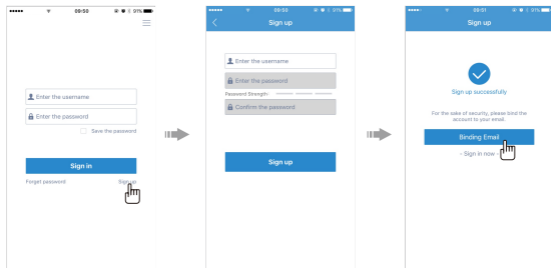
Method II: Scan to Download:



Method III: Download "MIPC" APP from APP Store(iOS) or Play Store(Android).

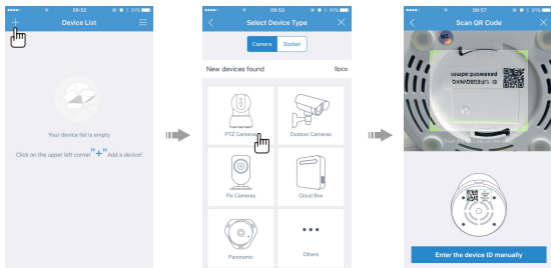
2. Register an Account

Open "MIPC" APP, click "register" button, register & log in as instructed(For your account safety & retrieve password, we suggest you to bind with email before log in).



3. Add camera

Click on "+" in top left corner, choose "PTZ cameras" (FIX/ Cloud box/ Panoramic), scan the QR code on bottom of the camera, and tap the "Add" button to enter the network connection interface.



4. Select network connection

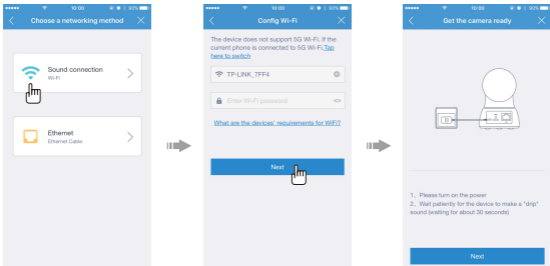
You could choose either "Sound connection" or "Ethernet connection" to connect the camera.

Note:

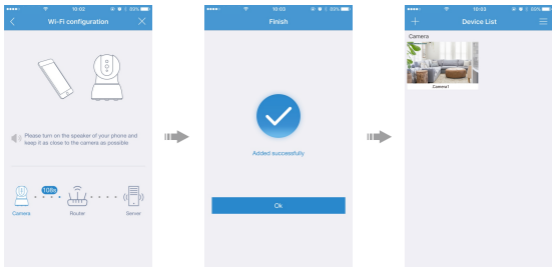
- ① Press RESET for 1 second to enter Wi-Fi configuration; press for 10 seconds or longer to restore to factory settings(when you hear a chime, then setting successfully).
- ② Try "Ethernet connection" if "Sound connection" unsuccessful.

Option 1: Sound connection

- Click the "Sound connection" icon, setting up Wi-Fi for camera (only support 2.4GHZ), input the Wi-Fi password;
- Power on the device (30-60 seconds after you connect the power, you will hear the chime and the IR light will turn off, now camera is powered on);

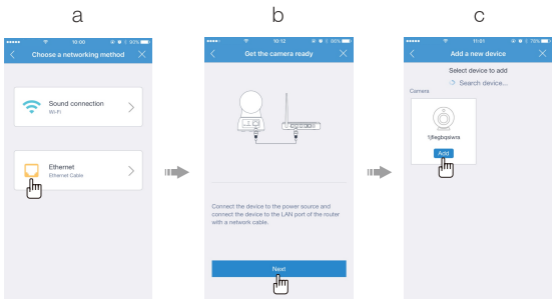


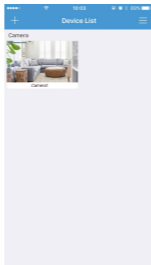
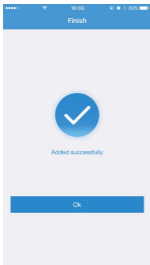
- Click the "Already heard the voice hint" if you hear the chime, and wait until successfully connected.
 - If no chime heard, please press the RESET button for 1 second, you will hear the voice prompt say "Waiting for receiving the wireless configuration", click "Already heard the voice hint", and wait until successfully connected.



Option 2: Ethernet connection

- Click the "Ethernet connection" icon;
- Power on the device, connect the camera to router with Ethernet cable (camera will be powered on in 30-60 seconds);
- Add the matched device until set up successfully.





FAQ

1. What if the camera cannot connect to Wi-Fi?

- A: - Check if your Wi-Fi password contains special characters such as spaces, commas, periods, etc. which may not be recognized by the camera.
- The camera is only available to 2.4GHz Wi-Fi, not 5GHz Wi-Fi. Please check and see your Wi-Fi frequency band of the router.
 - Keep your mobile phone as close to the camera as possible, and keep your camera as close to the router as possible.
 - Poor Wi-Fi signal may result in failure to connect to your camera. You can use a Wi-Fi Range Extender which will extend the Wi-Fi signal and wireless coverage of existing wireless networks.
 - If you have an Ethernet cable at home, please try to set up the camera with it, then follow the directions on the APP to change into a Wi-Fi network.
 - If you fail to connect the camera, please follow these steps and try again:
 - ① Remove power cord. Then, re-plug it in.
 - ② Press and Hold the RESET button for over 10 seconds to restore the camera to factory settings when you hear the voice prompt and the IR light turns on.
 - ③ Set up the camera once more when you hear the voice prompt.

2. After inserting the SD card properly, why does the camera still not have any recorded videos?

- A: - The camera needs to be inserted when the camera is off.
- After the camera is inserted with SD card, the video recording function needs to be turned on manually.
 - Steps: Settings-SD Card-Activate. Then set up for recording in Settings-Record-Continuous Recording/ Motion-Detection, enable the recording and save the settings.

3. APP can't receive the alarm notification?

A: The camera has motion detection and alarm function, but it needs manual setup. Steps: enter the camera "settings", select "Notifications", enable the motion detection feature and save the settings.

4. What if I forget my account & password?

A: You can find your account & password with the binding email, it will not be found if not binding with email.

5. How can I see the recorded video? Can I put the SD card in the computer to playback?

A: For your privacy and security, video files are encrypted, it must be playback through mobile phone APP or computer APP, and it cannot be played directly on the computer. You need to export the video through SDtool, a special video export tool.
The SDtool can be downloaded from www.mipcm.com.

6. How does the camera restore to factory settings?

A: Press and Hold the RESET button for 10 seconds, you will hear the voice prompt "Restore the factory settings successfully", now camera starting to restore, it will finish about 60 seconds, then you will hear a chime(Do not power off during restore procedures).

✉ : support@mipcm.com



Quick Installation Guide

Site: www.mipcm.com

