

## WTS - WLAN Tri-band Small Diameter

Model Number:

**WTS2450-RPSMA**

### External Antenna - Connector Mount

#### Specifications:

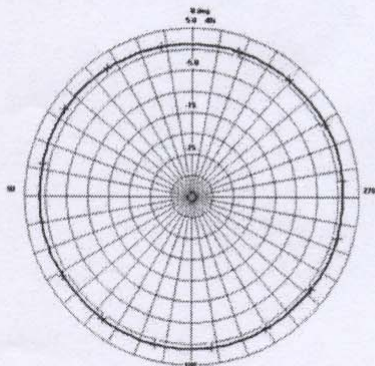
- Covers 2.4 to 2.5 GHz for 802.11b, and 4.9 to 6 GHz for 802.11a and all US, European, and Japanese WLAN applications
- Omni-directional patterns at all frequencies with increased gain in upper bands for optimal coverage

<b>Frequency</b>	2.4 - 2.5 GHz 4.9 - 5.875 GHz
<b>Gain</b>	2.5 dBi (2.45 GHz) 3.6 dBi (4.9 GHz) 3.0 dBi (5.25 GHz) 3.4 dBi (5.875 GHz)
<b>Polarization</b>	Vertical, Omnidirectional
<b>Nominal Impedance</b>	50 ohms
<b>VSWR</b>	2:1 max across all bands
<b>Size</b>	95.9 mm (180°) or 75.4 mm (90°) x 9.3 mm diameter

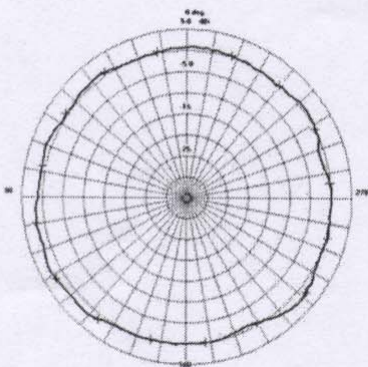


#### Cable and Connector:

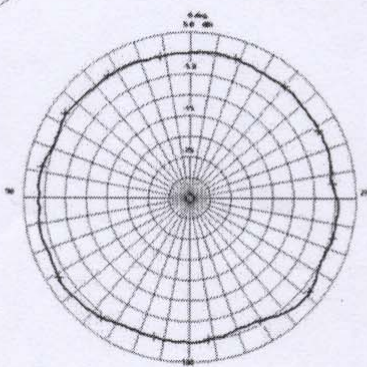
Model #	Part #	Connector
WTS2450-RPSMA	MAF94051	RP-SMA



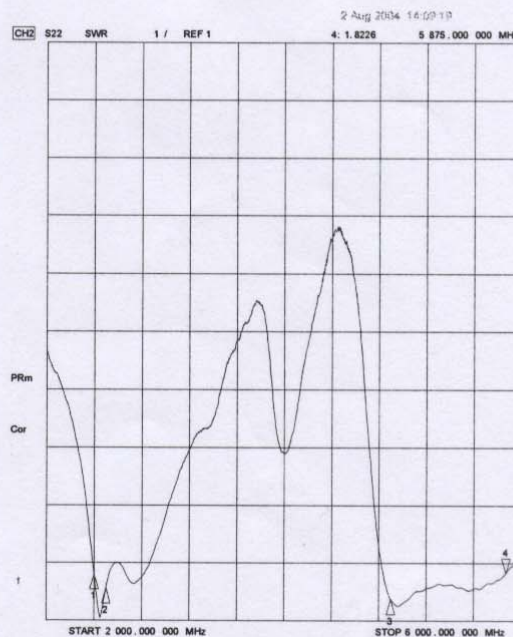
**Azimuth**  
2.45 GHz



**Azimuth**  
5.25 GHz



**Azimuth**  
5.75 GHz



**VSWR**

Specifications subject to change without notice.

WTS RPSMA - a - 9/15/04