



M2M-V™

Direct Connect Signal Booster Kit for Home Computers and Laptops

User Guide

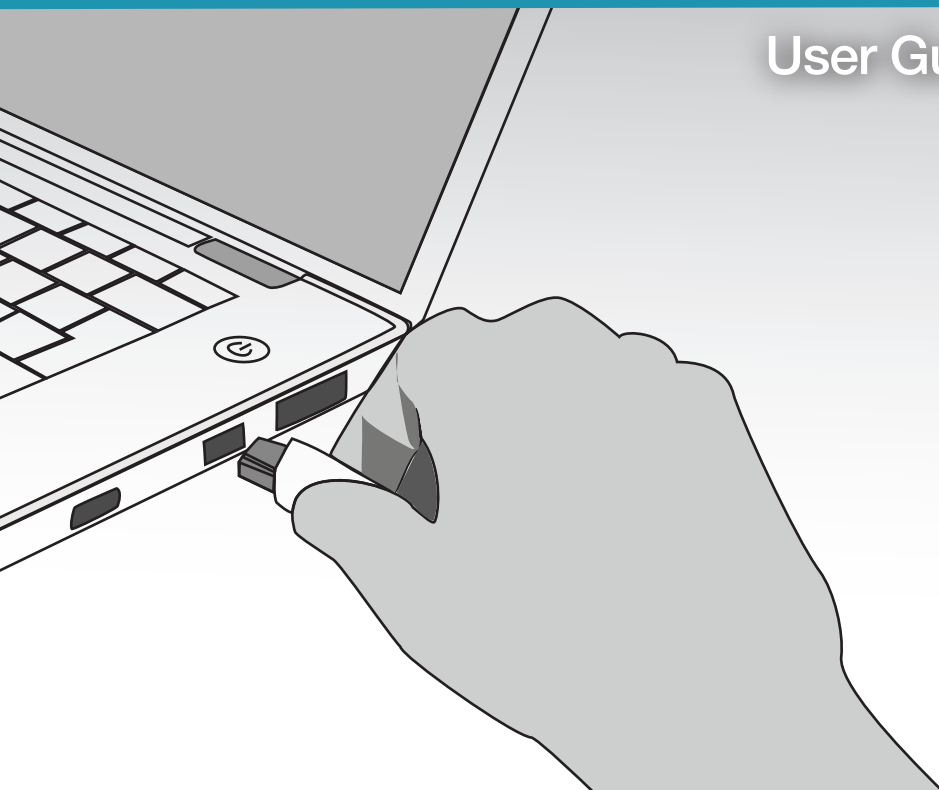


Table of Contents

The 4G LTE Signal Booster by SureCall provides noticeably enhanced 4G reception for Verizon or AT&T LTE. You will see the difference in the number of bars your computer displays and you'll notice the increased speed of data uploads and downloads.

Package Contents	Pg. 3
How It Works	Pg. 3
Installing Your Hardware	Pgs. 4-7
Finding the Strongest Signal	Pg. 4
Installing the Outside Antenna	Pg. 5-6
Installing Signal Booster	Pg. 7
Troubleshooting	Pg. 8
Kitting Information	Pg. 8
Specification	Pg. 9
Warranty	Pg. 10-11
Safety Information	Pg. 11

Package Contents:

Your 4G LTE signal booster package includes:

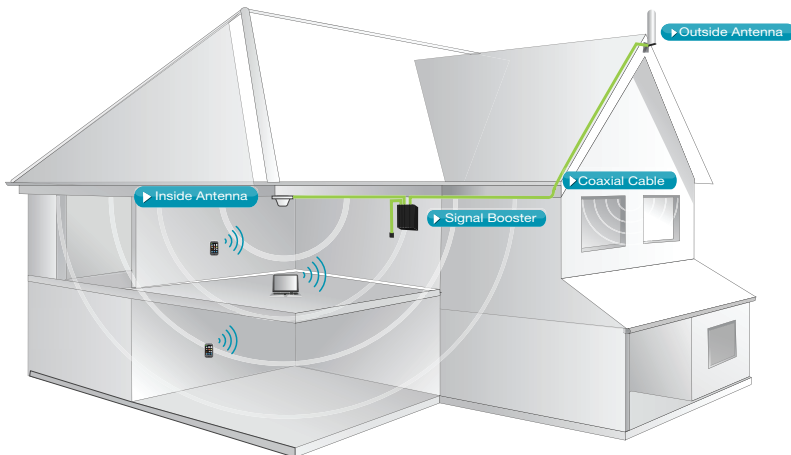
One SureCall carrier specific 4G LTE signal booster

One SC-288W antenna

One SC-240 40' foot outdoor cable

One SC-174 6' foot cable

The cellular signal is received by the antenna from the cell tower, it is then amplified and transmitted through the outdoor SC-240 cable to the 4G LTE booster, which sends it through the SC-174 cable and connects to the computer's USB connector (not included) to your computer's data card, sending the improved signal to your computer through the data card. When the data card transmits, the signal goes through the USB connector, it is then sent through the cable and amplified by the booster and broadcast back to the cell tower through the antenna.



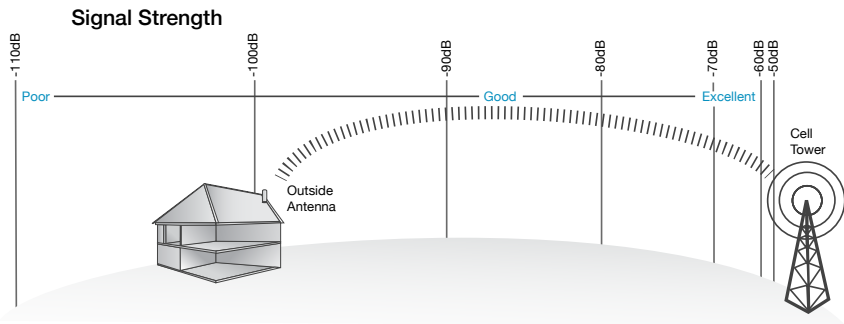
Finding the Strongest Signal

Step 1. Find the area with the Strongest Signal

The signal booster requires a minimum cellular signal of low -100 dBm. Signal readings usually appear as a negative number (for example, -85). The more bars you get, the closer the dB gets to zero. Aim for a signal close to -50 dB. Signals stronger than -50 dB may cause the booster to shut down. (see the graph below). Before installing the outside antenna, find the area with the strongest cellular signal source from your service provider by following the directions below. You can also go to www.antennasearch.com to find the general location of carrier towers.

1. Measure the strength of the existing cellular signal in various locations.

- Apple iPhones: Dial $*3001\#12345\#*$ and press Call. In the top-left corner, a dB number appears instead of bars.
- Android devices: download apps such as “Network Signal Info” in the Google Play store to measure signal strength. Search check real signal strength to find other cell signal measurement apps.
- Internet: go to www.speedtest.net to test 3G and 4G data rates.



2, Select a location away from buildings, walls, trees, hills, and other terrain features that can block or reflect wireless signals (12-inch clear radius is recommended).

Connect the Outdoor Antenna:

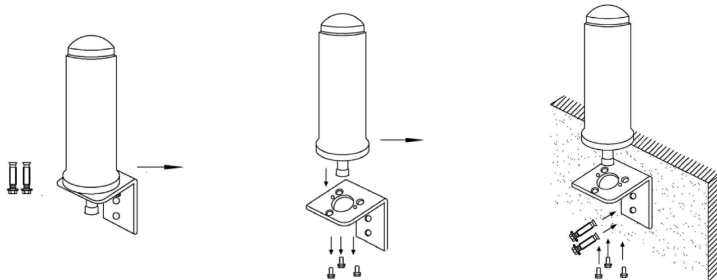
SureCall's omni antenna comes with equipment for mounting on a vertical wall. For best results the antenna should be mounted in an upright position.



The antenna should be placed near the location you identified in the previous step for the best possible reception. The best location will be clear of obstacles. Connect the antenna cable to the “OUTSIDE” connector of the booster and tighten it. If using another antenna other than a SureCall antenna, use the included adapter to connect the cable leading from OUTSIDE connection to antenna.

Mounting the Antenna:

- Step 1: Unscrew antenna from L-mounting bracket on antenna base with hands, or wrench, if needed.
- Step 2: Using vertical plate of bracket, mark position of desired placement with pencil or marker.
- Step 3: Unscrew nut on end of stucco screw and remove it along with lock washer and regular washer.
- Step 4: Place vertical plate into desired location and tap the screws, head first, along with sleeve into stucco 1/2" to 5/8" deep into place.
- Step 5: In this order, place washer, lock washer and nut on each screw and tighten until secure. When tightening screw, sleeve will expand to secure plate. Screw antenna securely back onto horizontal plate.



Installing Your Hardware

Connect the Data Port: Connect USB connector (not provided) to the supplied SC-174 6 foot cable and connect the cable to the booster connection labeled **INSIDE**.

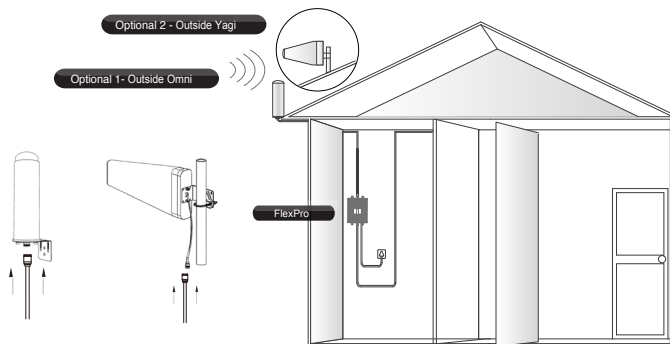
Connect the Power Cord:

To prevent damage to the booster, before plugging in the booster to an AC power outlet, make sure the booster's power switch is in the OFF position. Then connect the AC power cord to the booster using the USB connector end. Then connect the free plug to the outlet. Make sure all of the connections to the booster are tight and secure. The LED light will turn green indicating that the booster is ready to use.

Using the Booster

The booster is ready for use as soon as all connections are made and the unit powers up without the red light coming on. You may now enjoy enhanced cellular reception through your laptop or computer.

Note: The booster case may become warm during operation. This is normal. Press any key on your cell phone to refresh communication with the base station.



Note: Due to the recent change of our company name from Cellphone-Mate (CM) to SureCall (SC) we have changed the prefix on all of our antennas, cables and accessories from CM to SC-.

Troubleshooting

Problem	Resolution
Signal booster has no power	Verify that the booster switch is turned on. Make sure the power supply is plugged in. If the power LED is still off, return the power supply to SureCall. Contact SureCall's tech support at 888-365-6283 or @surecall.com, or go to www.surecall.com and log on to online support to receive a Return Merchandise Authorization (RMA).
After installing your signal booster system, you have no signal or reception.	Verify that all signal booster and antenna cable connections are secure.
The Warning LED on the side of your signal booster is flashing red.	Make sure you have the recommended 4-6 feet of separation between the booster and the antenna.

Kitting Information

Component	Product Number Description	LTE-V / LTE-A
Antenna	200W	3 dBi
	SC-110W (Optional)	1.1 dBi
Outdoor Cable	SC-174 10 feet	3.8 dB
Outdoor Cable	SC-174-5 Feet	2.1 dB

Specifications

Product Name	LTE Verizon	LTE AT&T
Uplink Frequency Range (MHz):	776-787	728-746
Input Impedance/ OutImpedancde	745-757	698-716
Downlink Frequency Range (MHz):	50 Ω	
Maximum Gain:	15 dB	
Noise Figure:	5 dB	
VSWR:	≤2.0	
AC Power Transofer	110VAC, 60Hz IN / 6V	
Maximum Output Power:	1 Watt EIRP	
Cable:	SC-174	
RF Connectors:	FME Male Connectors	
Power Consumption:	<9W	
Dimensions:	6"x 4" x 2"	
Weight:	1 lb.13 oz	
FCC ID (USA)	RSNM2M	

Three-Year Product Warranty

SureCall warrants its products for three years from the date of purchase against defects in workmanship and/or materials. Specifications are subject to change. The three-year warranty only applies to products meeting the latest FCC Certification Guidelines stated on 2/20/2013 and going into effect April 30, 2014. A two-year warranty applies to any products manufactured before May 1, 2014.

Products returned by customers must be in their original, un-modified condition, shipped in the original or protective packaging with proof-of-purchase documentation enclosed, and a Return Merchandise Authorization (RMA) number printed clearly on the outside of the shipping container.

Buyers may obtain an RMA number for warranty returns by calling the SureCall Return Department toll-free at 1-888-365-6283. Any returns received by SureCall without an RMA number clearly printed on the outside of the shipping container will be returned to sender. In order to receive full credit for signal boosters, all accessories originally included in the signal booster box must be returned with the signal booster. (The Buyer does not need to include accessories sold in addition to the signal booster, such as antennas or cables.)

This warranty does not apply to any product determined by SureCall to have been subjected to misuse, abuse, neglect, or mishandling that alters or damages the product's physical or electronic properties.

SureCall warrants to the Buyer that each of its products, when shipped, will be free from defects in material and workmanship, and will perform in full accordance with applicable specifications. The limit of liability under this warranty is, at SureCall's option, to repair or replace any product or part thereof which was purchased up to **THREE YEARS after May 1, 2014 or TWO YEARS for products purchased before May 1, 2014**, as determined by examination by SureCall, prove defective in material and/or workmanship. Warranty returns must first be authorized in writing by SureCall. Disassembly of any SureCall product by anyone other than an authorized representative of SureCall voids this warranty in its entirety. SureCall reserves the right to make changes in any of its products without incurring any obligation to make the same changes on previously delivered products.

As a condition to the warranties provided for herein, the Buyer will prepay the shipping charges for all products returned to SureCall for repair, and SureCall will pay the return shipping with the exception of products returned from outside the United States, in which case the Buyer will pay the shipping charges.

The Buyer will pay the cost of inspecting and testing any goods returned under the warranty or otherwise, which are found to meet the applicable specifications or which are not defective or not covered by this warranty.

Products sold by SureCall shall not be considered defective or non-conforming to the Buyer's order if they satisfactorily fulfill the performance requirements that were published in the product specification literature, or in accordance with samples provided by SureCall. This warranty shall not apply to any products or parts thereof which have been subject to accident, negligence, alteration, abuse, or misuse. SureCall makes no warranty whatsoever in respect to accessories or parts not supplied by it.

Limitations of Warranty, Damages and Liability:

EXCEPT AS EXPRESSLY SET FORTH HEREIN, THERE ARE NO WARRANTIES, CONDITIONS, GUARANTEES, OR REPRESENTATIONS AS TO MERCHANTABILITY, FITNESS FOR A PARTICULAR PURPOSE, OR OTHER WARRANTIES, CONDITIONS, GUARANTEES, OR REPRESENTATIONS, WHETHER EXPRESSED OR IMPLIED, IN LAW OR IN FACT, ORAL OR IN WRITING.

SURECALL AGGREGATE LIABILITY IN DAMAGES OR OTHERWISE SHALL NOT EXCEED THE PAYMENT, IF ANY, RECEIVED BY CELLPHONE-MATE, INC. FOR THE UNIT OF PRODUCT OR SERVICE FURNISHED OR TO BE FURNISHED, AS THE CASE MAY BE, WHICH IS THE SUBJECT OF CLAIM OR DISPUTE. IN NO EVENT SHALL SURECALL BE LIABLE FOR INCIDENTAL, CONSEQUENTIAL, OR SPECIAL DAMAGES, HOWSOEVER CAUSED.

All matters regarding this warranty shall be interpreted in accordance with the laws of the State of California, and any controversy that cannot be settled directly shall be settled by arbitration in California in accordance with the rules then prevailing of the American Arbitration Association, and judgment upon the award rendered may be entered in any court having jurisdiction thereof. If one or more provisions provided herein are held to be invalid or unenforceable under applicable law, then such provision shall be ineffective and excluded to the extent of such invalidity or unenforceability without affecting in any way the remaining provisions hereof.

SAFETY INFORMATION

This is a CONSUMER device.

BEFORE USE, you MUST REGISTER THIS DEVICE with your wireless provider and have your provider's consent. Most wireless providers consent to the use of signal boosters. Some providers may not consent to the use of this device on their network. If you are unsure, contact your provider. You MUST operate this device with approved antennas and cables as specified by the manufacturer. Antennas MUST be installed at least 20 cm (8 inches) from any person. You MUST cease operating this device immediately if requested by the FCC or a licensed wireless service provider.

WARNING: E911 location information may not be provided or may be inaccurate for calls served BY USING THIS DEVICE.

48346 Milmont Drive
Fremont, California 94538
USA
888.365.6283
Fax: 510.996.7250
www.surecall.com

SureCall has made a good faith effort to ensure the accuracy of the information in this document and disclaims the implied warranties of merchantability and fitness for a particular purpose and makes no express warranties, except as may be stated in its written agreement with and for its customers. SureCall shall not be held liable to anyone for any indirect, special or consequential damages due to omissions or errors. The information and specifications in this document are subject to change without notice. © 2014. All Rights Reserved. All trademarks and registered trademarks are the property of their respective owners.

This is a **CONSUMER** device.

BEFORE USE, you **MUST REGISTER THIS DEVICE** with your wireless provider and have your provider's consent. Most wireless providers consent to the use of signal boosters. Some providers may not consent to the use of this device on their network. If you are unsure, contact your provider.

You **MUST** operate this device with approved antennas and cables as specified by the manufacturer. Antennas **MUST** be installed at least 20 cm (8 inches) from any person.

You **MUST** cease operating this device immediately if requested by the FCC or a licensed wireless service provider.

WARNING. E911 location information may not be provided or may be inaccurate for calls served by using this device.