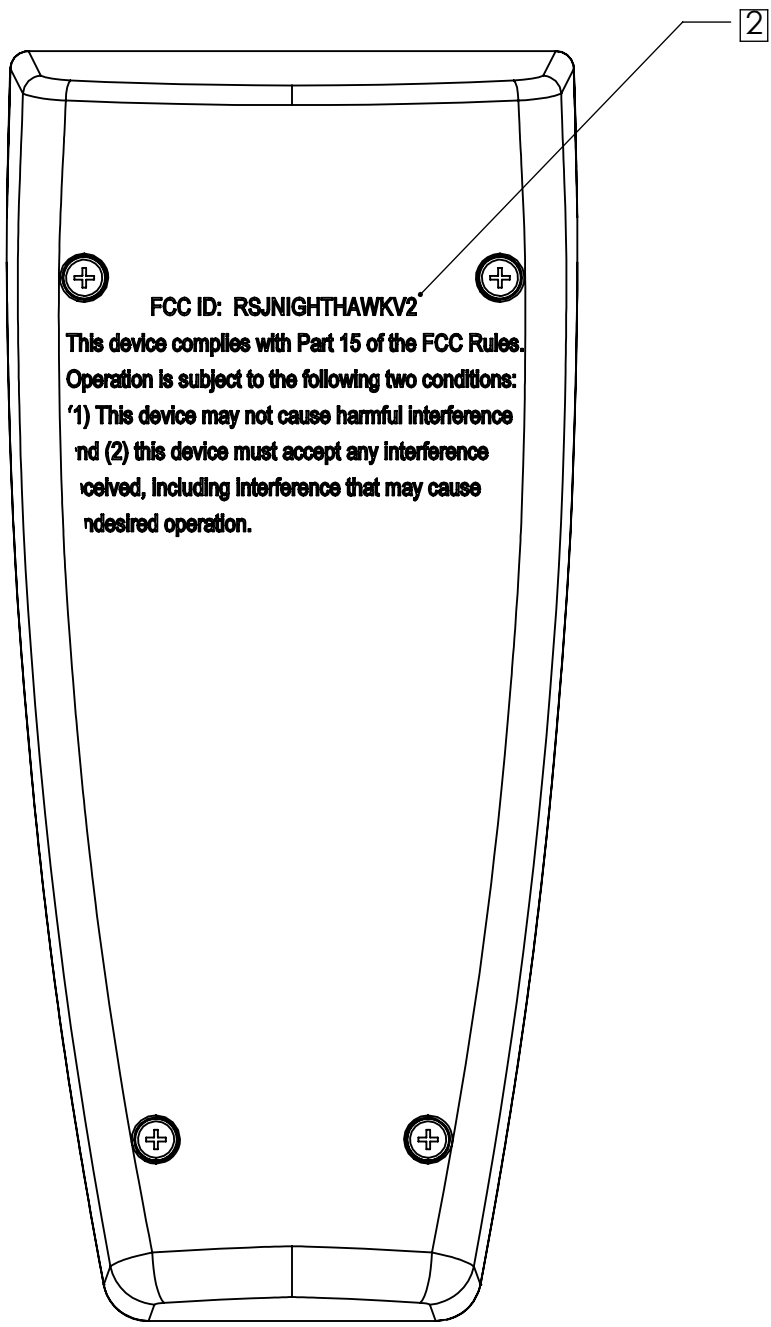


FCC ID: RSJNIGHTHVKV2

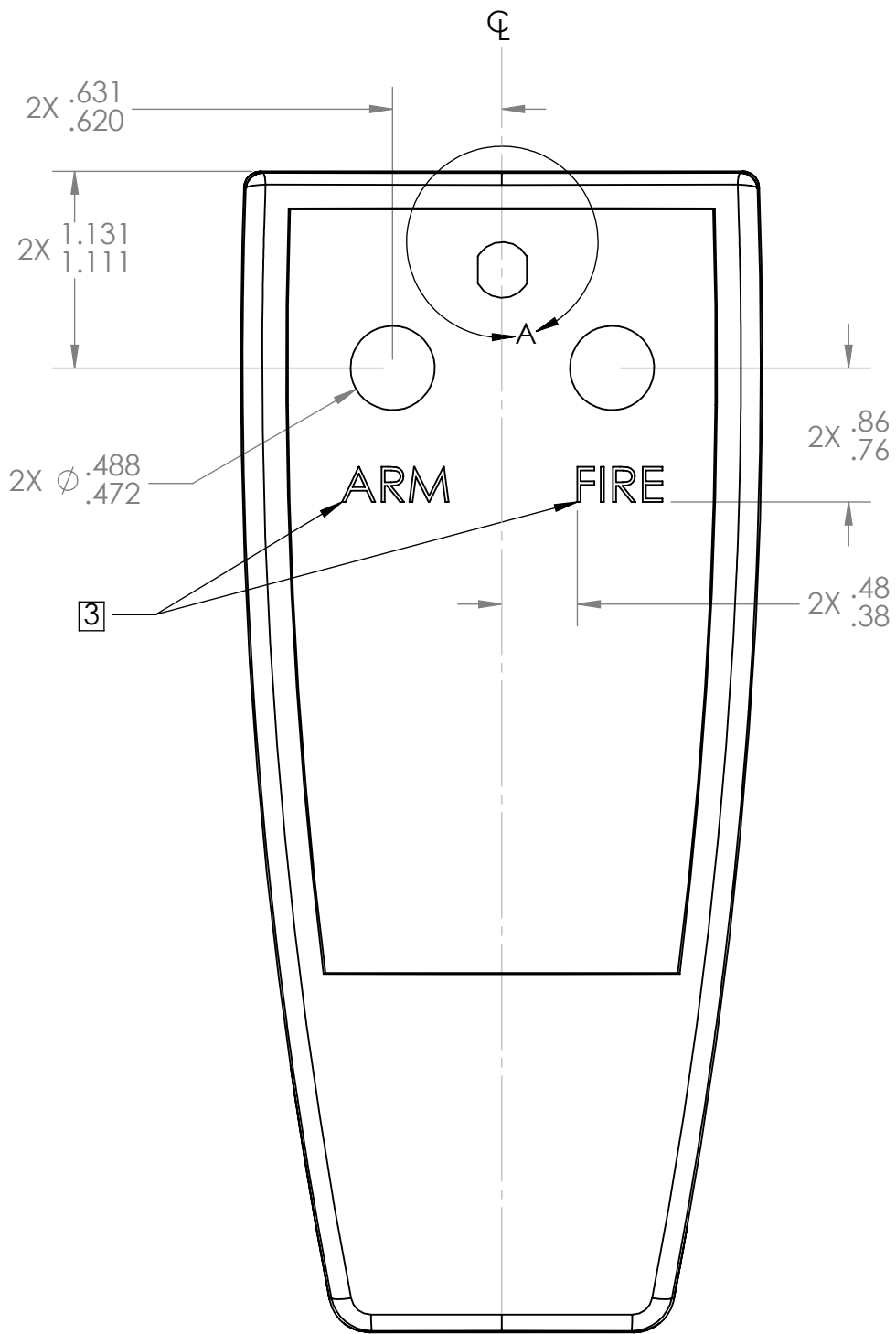
This device complies with Part 15 of the FCC Rules.
Operation is subject to the following two conditions:
(1) This device may not cause harmful interference
and (2) this device must accept any interference
received, including interference that may cause
undesired operation.

NOTES: UNLESS OTHERWISE SPECIFIED

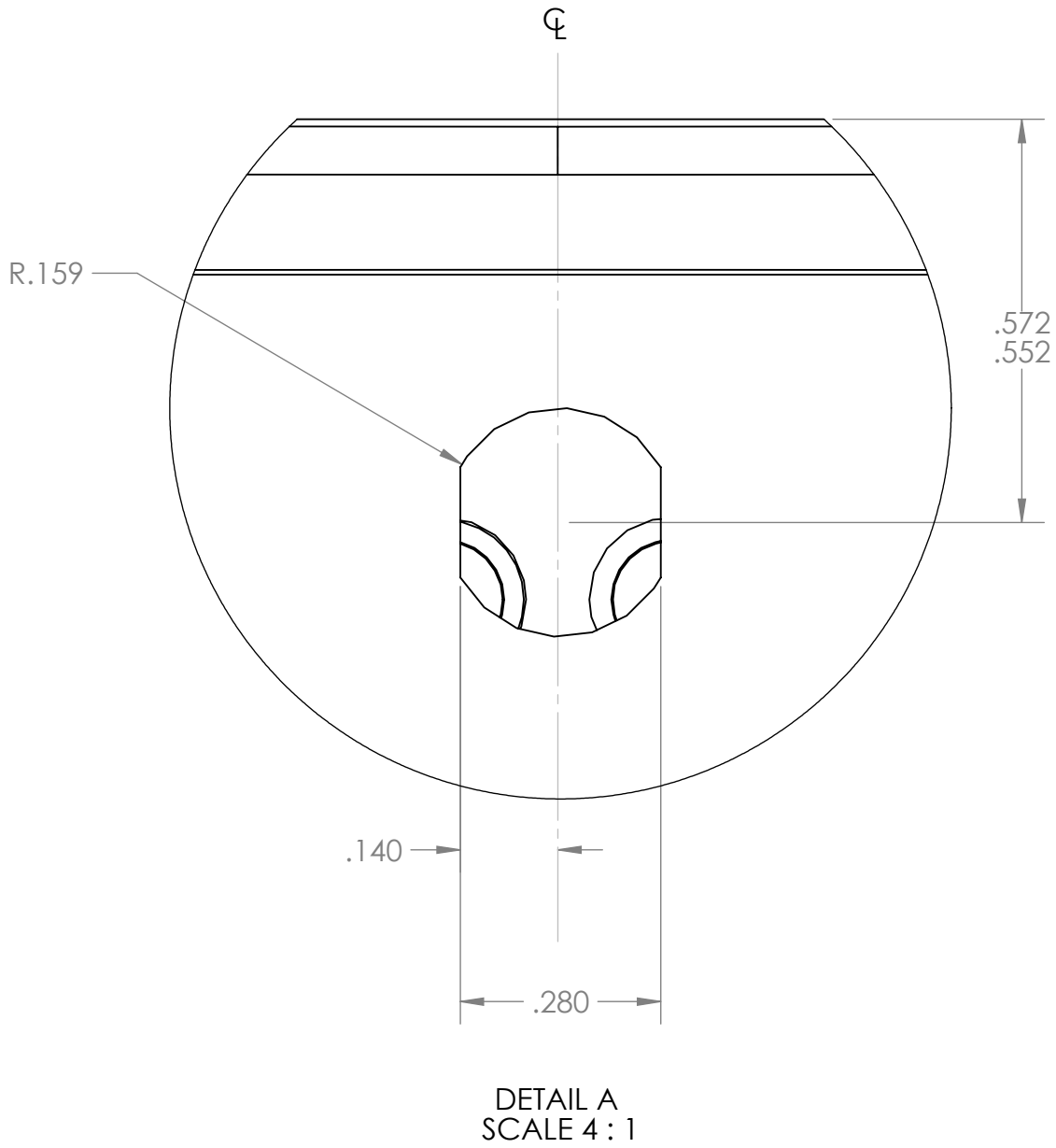
1. MACHINE WITH DIMENSIONS SHOWN THROUGH FACE PLATE OF THE FOLLOWING ENCLOSURE:
PN: A9068119
DESCRIPTION: SMART CASE XL
2. THE FOLLOWING SHALL BE LASER MARKED ONTO THE REAR OF THE ENCLOSURE, WHERE SHOWN, WITH A CHARACTER HEIGHT OF 0.09":
FCC ID: RSJNIGHTHAWKV2
This device complies with Part 15 of the FCC Rules.
Operation is subject to the following two conditions:
(1) This device may not cause harmful interference
and (2) this device must accept any interference
received, including interference that may cause
undesired operation.
3. THE FRONT OF THE ENCLOSURE SHALL BE MARKED AS SHOWN WITH A CHARACTER HEIGHT OF 0.2"
4. MACHINED FEATURES ARE NOT TO BE CHAMFERED.



REAR VIEW



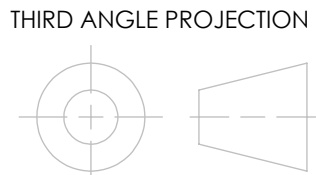
FRONT VIEW



DETAIL A
SCALE 4 : 1

UNCONTROLLED
DOCUMENT

PROPRIETARY
PACIFIC SCIENTIFIC ENERGETIC MATERIALS CO.
PROPRIETARY RIGHTS ARE INCLUDED IN THE
INFORMATION DISCLOSED HEREIN. INFORMATION
IS FURNISHED FOR EVALUATION PURPOSES ONLY
AND SHALL NOT BE USED, DISCLOSED OR
REPRODUCED FOR ANY OTHER PURPOSE WITHOUT
THE EXPRESSED WRITTEN CONSENT OF PACIFIC
SCIENTIFIC ENERGETIC MATERIALS CO.



UNLESS OTHERWISE SPECIFIED:
INTERPRET DIMENSIONING &
TOLERANCING IN ACCORDANCE
WITH ANSI Y14.5-1982.
DIMENSIONS ARE IN INCHES.

ANGULAR ±2°
DEC XX ±.01
XXX ±.005
CORNER RAD. .015 MAX
FILLET RAD. .015 MAX

SURFACES 125 OR BETTER

MATERIAL:

1

FINISH:

UNLESS OTHERWISE SPECIFIED:
ALL DIMENSIONS APPLY AFTER FINISH.
THREADS SHALL BE IN ACCORDANCE
WITH FED-STD-H28.
REMOVE ALL BURRS AND SHARP EDGES.

APPROVALS

BY N FERENTHEIL 3-5-2014

CHECK

PROJ.

ENGR.

MFG.

ENGR.

Q.A.

ENGR.

CHIEF

ENGR.

PACIFIC SCIENTIFIC
ENERGETIC MATERIALS CO. CHANDLER, ARIZONA

TITLE
REMOTE ENCLOSURE, MODIFIED

SIZE

D

CAGE CODE

54181

DWG NO.

2-601602

REV

X1

SCALE: 1:1

SHEET 1 OF 1