



Test Report

Product Name : Tablet PC
Model No. : ATP-151, VM15UA, PP6519
FCC ID : RSGVM15UAATP-151

Applicant : ATIO System , Inc.

Address : 8F-10, No. 351, Chung Shan Rd., Sec. 2, Chung Ho City,
Taipei, Taiwan 235

Date of Receipt : Jan. 7. 2004

Date of Test : Jan. 28. 2004

Report No. : 041L065FI

The test results relate only to the samples tested.
The test report shall not be reproduced except in full without the written approval of Quietek Corporation.
This report must not be used to claim product endorsement by NVLAP any agency of the U.S. Government

Test Report Certification

Test Date : Jan. 28. 2004

Report No. : 041L065FI



Accredited by NIST (NVLAP)
NVLAP Lab Code: 200533-0

Product Name : Tablet PC

Applicant : ATIO System , Inc.

Address : 8F-10, No. 351, Chung Shan Rd., Sec. 2, Chung Ho City, Taipei,
Taiwan 235

Manufacturer : ATIO System , Inc.

Model No. : ATP-151, VM15UA , PP6519

Rated Voltage : AC 120V/60Hz

Trade Name : ATIO

Measurement Standard : FCC Part 15 Subpart C Paragraph 15.247

Measurement Procedure : ANSI C63.4: 1992

Test Result : Complied



Test results relate only to the samples tested.

The test report shall not be reproduced except in full without the written approval of Quietek Corporation.

This report must not be used to claim product endorsement by NVLAP any agency of the U.S. Government

Documented By : Grace Lin
(Grace Lin)

Tested By : Geddy Jerg
(Geddy Jerg)

Approved By : Gene Chang
(Gene Chang)

TABLE OF CONTENTS

Description	Page
1. GENERAL INFORMATION	4
1.1. EUT Description.....	4
1.2. Operational Description	5
1.3. Tested System Details.....	6
1.4. Configuration of tested System	7
1.5. EUT Exercise Software	7
1.6. Test Facility	8
2. Conducted Emission.....	9
2.1. Test Equipment.....	9
2.2. Test Setup	9
2.3. Limits	10
2.4. Test Procedure	10
2.5. Test Result of Conducted Emission.....	11
3. Peak Power Output	17
3.1. Test Equipment.....	17
3.2. Test Setup	17
3.3. Limits	17
3.4. Test Result of Peak Power Output.....	18
4. Radiated Emission.....	19
4.1. Test Equipment.....	19
4.2. Test Setup	19
4.3. Limits	20
4.4. Test Procedure	21
4.5. Test Result of Radiated Emission.....	22
5. Band Edge	28
5.1. Test Equipment.....	28
5.2. Test Setup	28
5.3. Limits	29
5.4. Test Procedure	29
5.5. Test Result of Band Edge	30
6. Occupied Bandwidth.....	32
6.1. Test Equipment.....	32
6.2. Test Setup	32
6.3. Limits	32
6.4. Test Result of Occupied Bandwidth	33
7. Power Density	36
7.1. Test Equipment.....	36
7.2. Test Setup	36
7.3. Limits	36
7.4. Test Result of Power Density	37
8. EMI Reduction Method During Compliance Testing	40

Attachment 1: EUT Test Photographs

Attachment 2: EUT Detailed Photographs

1. GENERAL INFORMATION

1.1. EUT Description

Product Name : Tablet PC
 Trade Name : ATIO
 Model No. : ATP-151, VM15UA, PP6519
 FCC ID : RSGVM15UAATP-151
 Frequency Range : 2412MHz to 2462MHz
 Channel Number : 11
 Data Speed (IEEE 802.11b) : 1Mbps, 2Mbps, 5.5Mbps, 11Mbps
 Type of Modulation : Direct Sequence Spread Spectrum
 Antenna Type : SMT Uiniature Coaxial Connectors (Right-angele plugs)
 Antenna Gain : 1dBi
 Channel Control : Auto
 Working Voltage : AC 120V/60Hz

Frequency of Each Channel:

Channel	Frequency	Channel	Frequency	Channel	Frequency
Channel 1:	2412 MHz	Channel 5:	2432 MHz	Channel 9:	2452 MHz
Channel 2:	2417 MHz	Channel 6:	2437 MHz	Channel 10:	2457 MHz
Channel 3:	2422 MHz	Channel 7:	2442 MHz	Channel 11:	2462 MHz
Channel 4:	2427 MHz	Channel 8:	2447 MHz		

Note:

1. This device is a 2.4GHz Tablet PC included 812.11b a 2.4GHz receiving function, a 2.4GHz transmitting function.
2. Regards to the frequency band operation; the highest rate that was included the lowest 、 middle and highest frequency of channel were selected to perform the test, then shown on this report.
3. These tests were conducted on a sample of the equipment for the purpose of demonstrating compliance with Part 15 Subpart C Paragraph 15.247 for spread spectrum devices.

1.2. Operational Description

EUT is a Tablet PC with 11 channels. This device provided four kinds of transmitting speed 1, 2, 5.5 and 11Mbps. The device of RF carrier is DQPSK, DBPSK and CCK (IEEE 802.11b)

The device adapts direct sequence spread spectrum modulation. The antenna was Connector provides diversity function to improve the receiving function.

This Tablet PC, compliant with IEEE 802.11b, is a high-efficiency Wireless LAN adapter. It allows your computer to connect to a wireless network and to share resources, such as files or printers without being bound to the network wires. Operation in 2.4GHz Direct Sequence Spread Spectrum (DSSS) radio transmission, the Tablet PC Wired Equivalent Protection (WEP) algorithm is used. In addition, its standard compliance ensures that it can communicate with any IEEE 802.11b network.

Test Mode: Mode 1: TX 11MHz (Channel 1)
 Mode 1: TX 11MHz (Channel 6)
 Mode 1: TX 11MHz (Channel 11)

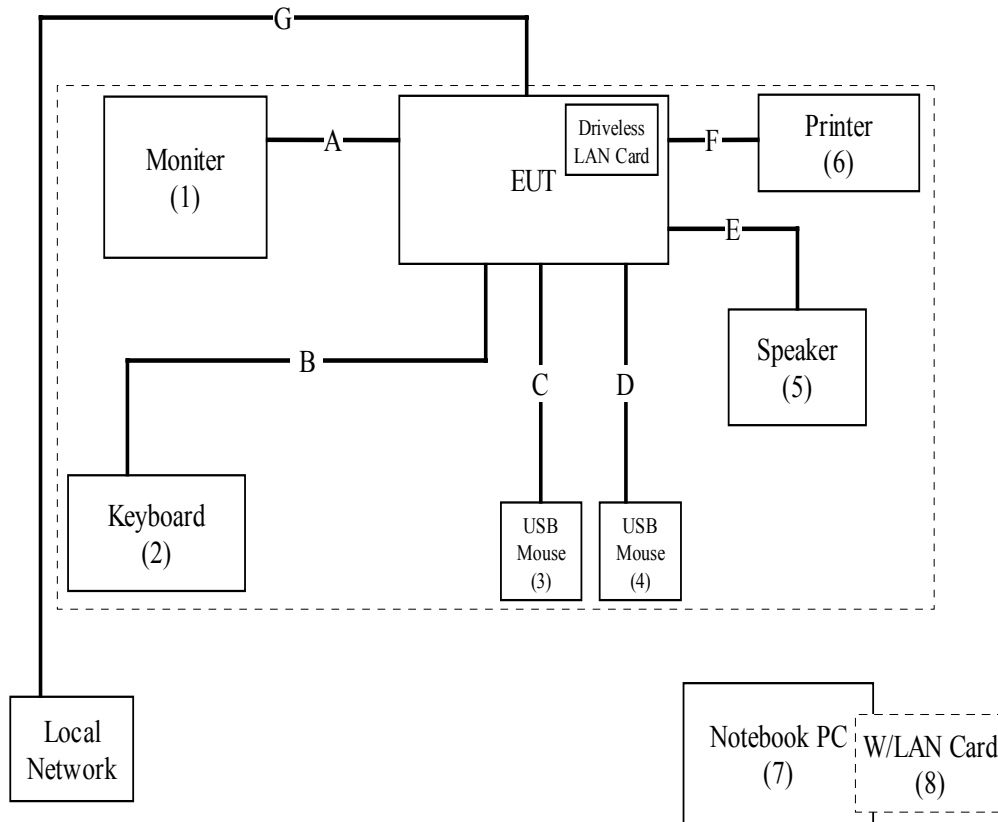
1.3. Tested System Details

The types for all equipment, plus descriptions of all cables used in the tested system (including inserted cards) are:

	Product	Manufacturer	Model No.	Serial No.	FCC ID	Power Cord
(1)	Monitor	ADI	CM703	038054T10203876A	DoC	Non-Shielded, 1.8m
(2)	Keyboard	COMPAQ	KB-0133	B55940FBUOE04B	DoC	N/A
(3)	USB Mouse	Logitech	M-BE58	LZE11405266	DoC	N/A
(4)	USB Mouse	Logitech	M-BE58	HCA30102923	DoC	N/A
(5)	Speaker	IBM	IBM FRU PN 09N5395	N/A	DoC	N/A
(6)	Printer	EPSON	Color 680	015999	DoC	Non-Shielded, 1.9m
(7)	Notebook PC	ASUS	S1300	24NP035390	DoC	Non-Shielded, 1.8m
(8)	W/LAN Card	LEMEL	LM-WLC030	1231Q048877	H8NWLC030	N/A

	Signal Cable Type	Signal cable Description
A.	D-SUB Cable	Shielded, 1.8m, with one ferrite core bonded.
B.	Keyboard Cable	Shielded, 1.8m
C.	USB Mouse Cable	Shielded, 1.0m
D.	USB Mouse Cable	Shielded, 1.0m
E.	Speaker Cable	Non-Shielded, 1.2m
F.	Printer Cable	Shielded, 1.2m
G.	LAN Cable	Non-Shielded, 7m

1.4. Configuration of tested System



1.5. EUT Exercise Software

- (1) Setup the EUT and simulators as shown on 1.4
- (2) Turn on the power of all equipment.
- (3) Notebook PC reads data from disk.
- (4) Data will be transmitting and receiving through EUT.
- (5) The transmitted and receive status will be shown on the monitor.
- (6) Repeat the above procedure (3) to (5)

1.6. Test Facility

Ambient conditions in the laboratory:

Items	Required (IEC 68-1)	Actual
Temperature (°C)	15-35	20-35
Humidity (%RH)	25-75	50-65
Barometric pressure (mbar)	860-1060	950-1000

Site Description: June 22, 2001 File on
 Federal Communications Commission
 FCC Engineering Laboratory
 7435 Oakland Mills Road
 Columbia, MD 21046
 Reference 31040/SIT1300F2



0914
ILAC MRA

July 03, 2001 Accreditation on NVLAP
 NVLAP Lab Code: 200533-0



Site Name: Quietek Corporation

Site Address: No. 5-22, Ruei-Shu Valley, Ruei-Ping Tsuen,
 Lin-Kou Shiang, Taipei,
 Taiwan, R.O.C.
 TEL: 886-2-8601-3788 / FAX : 886-2-8601-3789
 E-Mail : service@quietek.com



2. Conducted Emission

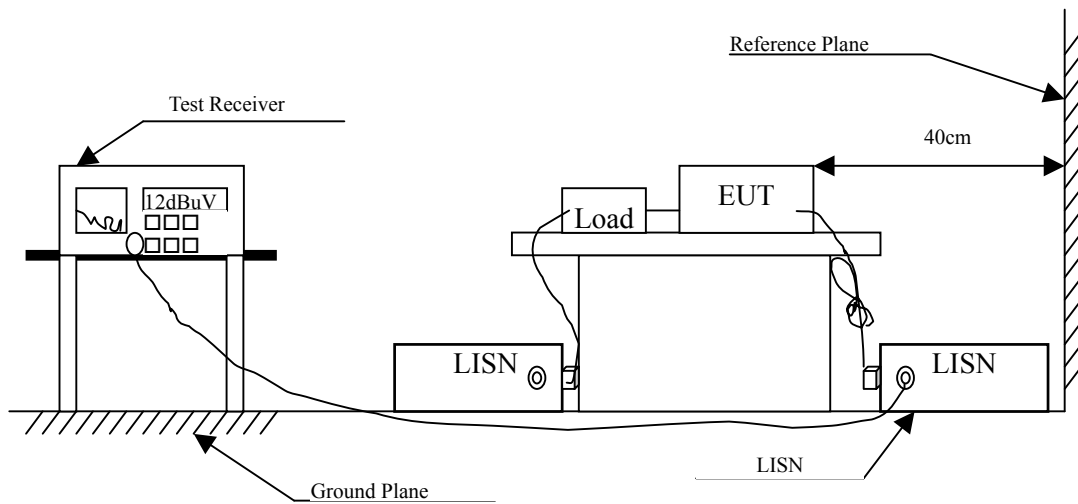
2.1. Test Equipment

The following test equipment are used during the conducted emission test:

Item	Instrument	Manufacturer	Type No./Serial No	Last Cal.	Remark
1	Test Receiver	R & S	ESCS 30/825442/17	May, 2003	
2	L.I.S.N.	R & S	ESH3-Z5/825016/6	May, 2003	EUT
3	L.I.S.N.	Kyoritsu	KNW-407/8-1420-3	May, 2003	Peripherals
4	Pulse Limiter	R & S	ESH3-Z2	May, 2003	
5	No.4 Shielded Room			N/A	

Note: All equipment upon which need to calibrated are with calibration period of 1 year.

2.2. Test Setup



2.3. Limits

FCC Part 15 Subpart C Paragraph 15.207 (dBuV) Limit		
Frequency MHz	Limits	
	uV	dBuV
0.15 - 0.50	66-56 ^(註)	56-46 ^(註)
0.50-5.0	56	46
5.0 - 30	60	50

2.4. Test Procedure

The EUT and simulators are connected to the main power through a line impedance stabilization network (L.I.S.N.). This provides a 50 ohm /50uH coupling impedance for the measuring equipment. The peripheral devices are also connected to the main power through a LISN that provides a 50ohm/50uH coupling impedance with 50ohm termination. (Please refers to the block diagram of the test setup and photographs.)

Both sides of A.C. line are checked for maximum conducted interference. In order to find the maximum emission, the relative positions of equipment and all of the interface cables must be changed according to ANSI C63.4:1992 on conducted measurement.

Conducted emissions were invested over the frequency range from 0.15MHz to 30MHz using a receiver bandwidth of 9kHz.

2.5. Test Result of Conducted Emission

Product : Tablet PC
 Test Item : Conducted Emission Test
 Power Line : Line 1
 Test Mode : Mode 1: TX 11MHz (Channel 1)

Frequency MHz	Cable Loss dB	LISN Factor dB	Reading Level dBuV	Emission Level dBuV	Limits dBuV
=====					
Quasi-Peak					
0.217	0.60	0.10	29.00	29.70	62.93
0.505	0.60	0.10	25.60	26.30	56.00
1.302	0.60	0.11	22.20	22.91	56.00
2.682	0.60	0.14	28.30	29.04	56.00
* 4.787	0.60	0.17	30.30	31.07	56.00
12.703	0.78	0.29	21.30	22.36	60.00
Average					
0.217	0.60	0.10	26.50	27.20	52.93
0.505	0.60	0.10	25.10	25.80	46.00
1.302	0.60	0.11	21.20	21.91	46.00
2.682	0.60	0.14	28.10	28.84	46.00
* 4.787	0.60	0.17	30.10	30.87	46.00
12.703	0.78	0.29	20.50	21.56	50.00

Note:

1. All Reading Levels are Quasi-Peak value.
2. “ * ”, means this data is the worst emission level.
3. Emission Level = Reading Level + LISN Factor + Cable Loss.

Product : Tablet PC
 Test Item : Conducted Emission Test
 Power Line : Line 2
 Test Mode : Mode 1: TX 11MHz (Channel 1)

Frequency MHz	Cable Loss dB	LISN Factor dB	Reading Level dBuV	Emission Level dBuV	Limits dBuV
=====					
Quasi-Peak					
0.215	0.60	0.10	33.60	34.30	63.01
0.579	0.60	0.10	27.40	28.10	56.00
* 2.689	0.60	0.14	28.90	29.64	56.00
4.435	0.60	0.16	28.20	28.96	56.00
7.566	0.60	0.19	23.00	23.79	60.00
19.138	0.73	0.44	17.50	18.66	60.00
Average					
0.215	0.60	0.10	31.30	32.00	53.01
0.579	0.60	0.10	27.20	27.90	46.00
2.689	0.60	0.14	28.70	29.44	46.00
* 4.435	0.60	0.16	28.00	28.76	46.00
7.566	0.60	0.19	22.70	23.49	50.00
19.138	0.73	0.44	13.40	14.56	50.00

Note:

1. All Reading Levels are Quasi-Peak value.
2. “ * ”, means this data is the worst emission level.
3. Emission Level = Reading Level + LISN Factor + Cable Loss.

Product : Tablet PC
 Test Item : Conducted Emission Test
 Power Line : Line 1
 Test Mode : Mode 1: TX 11MHz (Channel 6)

Frequency MHz	Cable Loss dB	LISN Factor dB	Reading Level dBuV	Emission Level dBuV	Limits dBuV
=====					
Quasi-Peak					
0.219	0.60	0.10	27.90	28.60	62.86
0.509	0.60	0.10	26.40	27.10	56.00
1.384	0.60	0.11	24.60	25.31	56.00
* 4.661	0.60	0.17	29.40	30.17	56.00
10.494	0.64	0.22	20.80	21.65	60.00
16.588	0.83	0.38	18.70	19.91	60.00
Average					
0.219	0.60	0.10	26.00	26.70	52.86
0.509	0.60	0.10	26.00	26.70	46.00
1.384	0.60	0.11	24.20	24.91	46.00
* 4.661	0.60	0.17	28.90	29.67	46.00
10.494	0.64	0.22	17.60	18.45	50.00
16.588	0.83	0.38	16.00	17.21	50.00

Note:

1. All Reading Levels are Quasi-Peak value.
2. “ * ”, means this data is the worst emission level.
3. Emission Level = Reading Level + LISN Factor + Cable Loss.

Product : Tablet PC
 Test Item : Conducted Emission Test
 Power Line : Line 2
 Test Mode : Mode 1: TX 11MHz (Channel 6)

Frequency MHz	Cable Loss dB	LISN Factor dB	Reading Level dBuV	Emission Level dBuV	Limits dBuV
=====					
Quasi-Peak					
0.216	0.60	0.10	33.80	34.50	62.97
0.364	0.60	0.10	25.40	26.10	58.64
1.021	0.60	0.10	26.80	27.50	56.00
* 4.739	0.60	0.17	27.30	28.07	56.00
8.317	0.60	0.19	20.50	21.29	60.00
18.393	0.76	0.42	18.50	19.68	60.00
Average					
0.216	0.60	0.10	31.50	32.20	52.97
0.364	0.60	0.10	25.10	25.80	48.64
1.021	0.60	0.10	26.40	27.10	46.00
* 4.739	0.60	0.17	26.80	27.57	46.00
8.317	0.60	0.19	17.70	18.49	50.00
18.393	0.76	0.42	14.60	15.78	50.00

Note:

1. All Reading Levels are Quasi-Peak value.
2. “ * ”, means this data is the worst emission level.
3. Emission Level = Reading Level + LISN Factor + Cable Loss.

Product : Tablet PC
 Test Item : Conducted Emission Test
 Power Line : Line 1
 Test Mode : Mode 1: TX 11MHz (Channel 11)

Frequency MHz	Cable Loss dB	LISN Factor dB	Reading Level dBuV	Emission Level dBuV	Limits dBuV
=====					
Quasi-Peak					
0.220	0.60	0.10	26.90	27.60	62.82
0.513	0.60	0.10	26.00	26.70	56.00
1.388	0.60	0.11	24.70	25.41	56.00
2.704	0.60	0.14	28.90	29.64	56.00
* 4.751	0.60	0.17	29.50	30.27	46.00
10.385	0.63	0.21	17.60	18.44	60.00
Average					
0.220	0.60	0.10	25.80	26.50	52.82
0.513	0.60	0.10	25.70	26.40	46.00
1.388	0.60	0.11	24.20	24.91	46.00
2.704	0.60	0.14	28.70	29.44	46.00
* 4.751	0.60	0.17	29.20	29.97	46.00
10.385	0.63	0.21	13.10	13.94	50.00

Note:

1. All Reading Levels are Quasi-Peak value.
2. “ * ”, means this data is the worst emission level.
3. Emission Level = Reading Level + LISN Factor + Cable Loss.

Product : Tablet PC
 Test Item : Conducted Emission Test
 Power Line : Line 2
 Test Mode : Mode 1: TX 11MHz (Channel 11)

Frequency MHz	Cable Loss dB	LISN Factor dB	Reading Level dBuV	Emission Level dBuV	Limits dBuV
=====					
Quasi-Peak					
0.220	0.60	0.10	33.60	34.30	62.82
0.583	0.60	0.10	27.70	28.40	56.00
* 1.462	0.60	0.12	29.30	30.02	46.00
2.708	0.60	0.14	30.50	31.24	56.00
5.502	0.60	0.17	30.70	31.47	60.00
18.603	0.75	0.43	20.20	21.37	60.00
Average					
0.220	0.60	0.10	32.20	32.90	52.82
0.583	0.60	0.10	27.40	28.10	46.00
1.462	0.60	0.12	27.00	27.72	46.00
* 2.708	0.60	0.14	30.40	31.14	46.00
5.502	0.60	0.17	30.20	30.97	50.00
18.603	0.75	0.43	18.20	19.37	50.00

Note:

1. All Reading Levels are Quasi-Peak value.
2. “ * ”, means this data is the worst emission level.
3. Emission Level = Reading Level + LISN Factor + Cable Loss.

3. Peak Power Output

3.1. Test Equipment

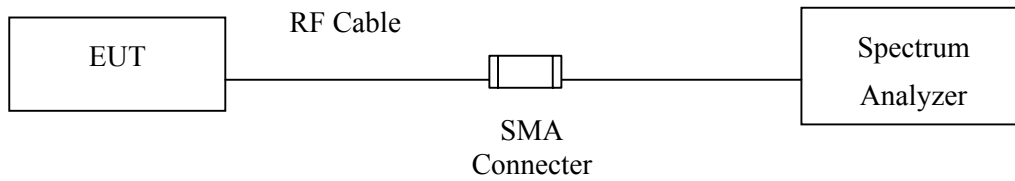
The following test equipments are used during the radiated emission tests:

Equipment	Manufacturer	Model No./Serial No.	Last Cal.
X Spectrum Analyzer	Advantest	R3272 / 72421194	May, 2003

Note: 1. All equipment upon which need to calibrated are with calibration period of 1 year.
 2. Mark "X" test instruments are used to measure the final test results.

3.2. Test Setup

Conduction Power Measurement



3.3. Limits

The maximum peak power shall be less 1 Watt.

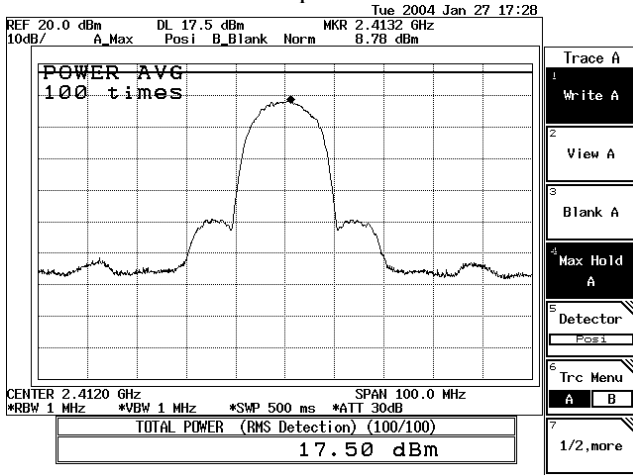
3.4. Test Result of Peak Power Output

Product : Tablet PC
 Test Item : Peak Power Output Data
 Test Site : No.3OATS
 Test Mode : Mode 1: TX 11MHz

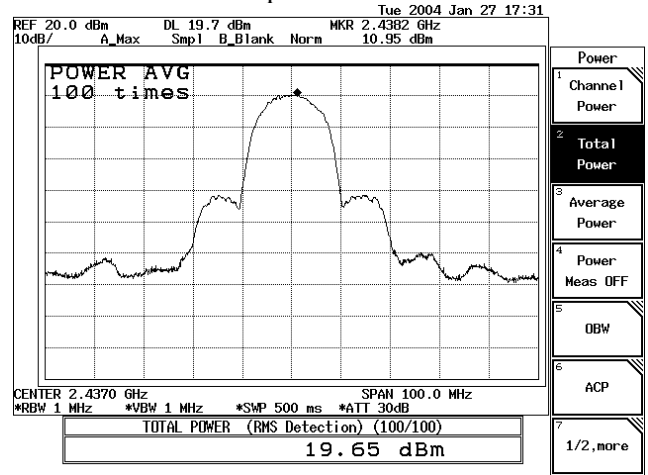
Data Speed: 11Mbps

Channel No.	Frequency (MHz)	Measurement	Required Limit	Result
1	2413.2	17.50 dBm	1 Watt= 30 dBm	Pass
6	2438.2	19.65 dBm	1 Watt= 30 dBm	Pass
11	2463.2	20.39 dBm	1 Watt= 30 dBm	Pass

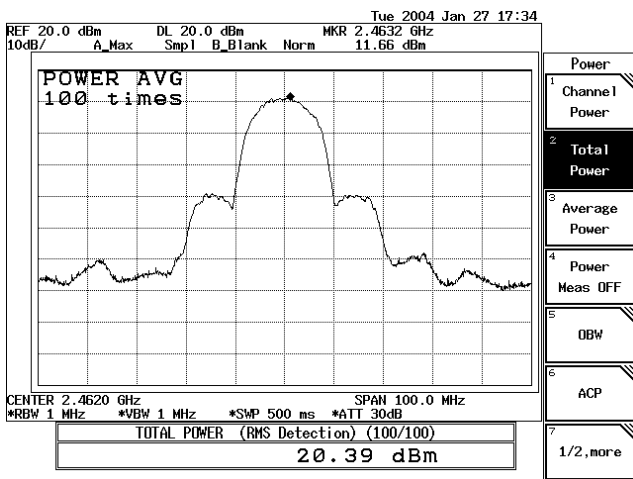
11Mbps-Channel 1



11Mbps-Channel 6



11Mbps-Channel 11



4. Radiated Emission

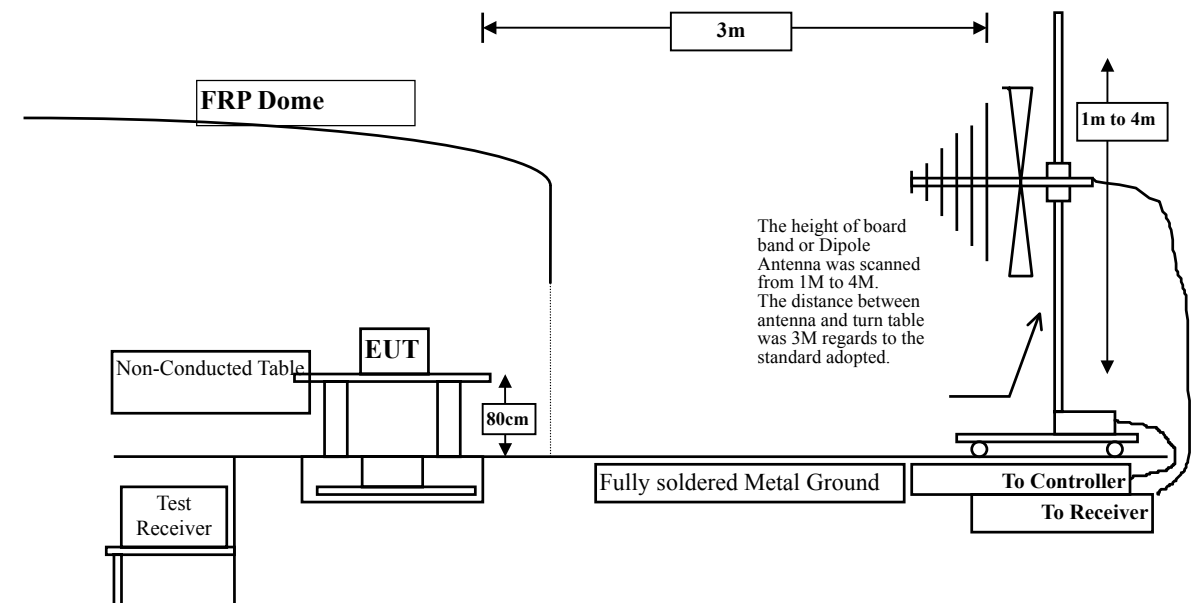
4.1. Test Equipment

The following test equipment are used during the radiated emission test:

Test Site	Equipment	Manufacturer	Model No./Serial No.	Last Cal.
Site # 1	Test Receiver	R & S	ESCS 30 / 825442/14	May, 2003
	Spectrum Analyzer	Advantest	R3261C / 71720140	May, 2003
	Pre-Amplifier	HP	8447D/3307A01812	May, 2003
	Bilog Antenna	Chase	CBL6112B / 12452	Sep., 2003
	Horn Antenna	EM	EM6917 / 103325	May, 2003
Site # 2	Test Receiver	R & S	ESCS 30 / 825442/17	May, 2003
	Spectrum Analyzer	Advantest	R3261C / 71720609	May, 2003
	Pre-Amplifier	HP	8447D/3307A01814	May, 2003
	Bilog Antenna	Chase	CBL6112B / 2455	Sep., 2003
	Horn Antenna	EM	EM6917 / 103325	May, 2003
Site # 3	X Test Receiver	R & S	ESI 26 / 838786 / 004	May, 2003
	X Spectrum Analyzer	Advantest	R3162 / 100803480	May, 2003
	X Pre-Amplifier	QTK	QTK-AMP-03 / 0003	May, 2003
	X Bilog Antenna	SCHAFFNER	CBL6112B / 2697	May, 2003
	X Horn Antenna	ETS	3115 / 0005-6160	Jul., 2003
	X Pre-Amplifier	QTK	QTK-AMP-01 / 0001	Jul., 2003

- Note:
1. All equipments that need to calibrate are with calibration period of 1 year.
 2. Mark "X" test instruments are used to measure the final test results.

4.2. Test Setup



4.3. Limits

➤ General Radiated Emission Limits

Emissions radiated outside of the specified frequency bands, except for harmonics, shall be attenuated by at least 20dB below the level of the fundamental or to the general radiated emission limits in paragraph 15.209, whichever is the lesser attenuation.

FCC Part 15 Subpart C Paragraph 15.209(a) Limits		
Frequency MHz	uV/m @3m	dBuV/m@3m
30-88	100	40
88-216	150	43.5
216-960	200	46
Above 960	500	54

- Remarks :
1. RF Voltage (dBuV) = 20 log RF Voltage (uV)
 2. In the Above Table, the tighter limit applies at the band edges.
 3. Distance refers to the distance in meters between the measuring instrument antenna and the closed point of any part of the device or system.

4.4. Test Procedure

The EUT and its simulators are placed on a turn table which is 0.8 meter above ground. The turn table can rotate 360 degrees to determine the position of the maximum emission level. The EUT was positioned such that the distance from antenna to the EUT was 3 meters.

The antenna can move up and down between 1 meter and 4 meters to find out the maximum emission level.

Both horizontal and vertical polarization of the antenna are set on measurement. In order to find the maximum emission, all of the interface cables must be manipulated according to ANSI C63.4:1992 on radiated measurement.

The additional latch filter below 1GHz was used to measure the level of harmonics radiated emission during field strength of harmonics measurement.

The bandwidth below 1GHz setting on the field strength meter (R&S Test Receiver ESCS 30)is 120 kHz, above 1GHz are 1 MHz.

The frequency range from 30MHz to 10th harmonics is checked.

4.5. Test Result of Radiated Emission

Product : Tablet PC
 Test Item : Harmonic Radiated Emission Data
 Test Site : No.3OATS
 Test Mode : Mode 1: TX 11MHz (Channel 1)

Frequency MHz	Cable Loss dB	Probe Factor dB/m	PreAMP dB	Reading Level dBuV	Emission Level dBuV/m	Margin dB	Limit dBuV/m
Horizontal							
Peak Detector							
4824.000	4.23	31.21	34.68	49.47	50.23	23.77	74.00
7236.000	5.63	35.87	34.99	44.70	51.21	22.79	74.00
9648.000	7.00	37.84	35.10	48.03	57.77	16.23	74.00
12060.00	8.40	38.62	34.14	40.84	53.71	20.29	74.00
Average Detector							
9848.000	7.13	38.00	35.07	40.01	50.07	3.93	54.00
Vertical							
Peak Detector							
4824.000	4.23	31.21	34.68	48.62	49.38	24.62	74.00
7236.000	5.63	35.87	34.99	46.30	52.81	21.19	74.00
9648.000	7.00	37.84	35.10	48.12	57.86	16.14	74.00
12060.00	8.40	38.62	34.14	39.63	52.50	21.50	74.00
Average Detector							
9648.000	7.00	37.84	35.10	41.74	51.48	2.52	54.00

Note:

1. All Readings below 1GHz are Quasi-Peak, above are average value.
2. Receiver setting (Peak Detector) : RBW:1MHz; VBW:1MHz; Span:100MHz ◦
3. Receiver setting (AVG Detector) : RBW:1MHz; VBW:30Hz; Span:20MHz ◦
4. Emission Level = Reading Level + Probe Factor + Cable Loss- PreAMP.
5. The average measurement was not performed when the peak measured data under the limit of average detection. If the readings given are average, peak measurement should also be supplied.

Product : Tablet PC
 Test Item : Harmonic Radiated Emission Data
 Test Site : No.3 OATS
 Test Mode : Mode 1: TX 11MHz (Channel 6)

Frequency	Cable Loss	Probe Factor	PreAMP	Reading Level	Emission Level	Margin	Limit
MHz	dB	dB/m	dB	dBuV	dBuV/m	dB	dBuV/m
Horizontal Peak Detector							
4824.000	4.23	31.21	34.68	48.00	48.76	25.24	74.00
7311.000	5.67	36.00	35.01	43.11	49.77	24.23	74.00
9748.000	7.06	37.90	35.10	48.62	58.48	15.52	74.00
12185.00	8.47	38.65	34.09	40.16	53.19	20.81	74.00
Average							
9748.000	7.06	37.90	35.10	42.09	51.95	2.05	54.00
Vertical Peak Detector							
4874.000	4.26	31.37	34.69	47.58	48.53	25.47	74.00
7311.000	5.67	36.00	35.01	42.25	48.91	25.09	74.00
9748.000	7.06	37.90	35.10	48.50	58.36	15.64	74.00
12185.00	8.47	38.65	34.09	40.05	53.08	20.92	74.00
Average							
9748.000	7.06	37.90	35.10	41.95	51.81	2.19	54.00

Note:

1. All Readings below 1GHz are Quasi-Peak, above are average value.
2. Receiver setting (Peak Detector) : RBW:1MHz; VBW:1MHz; Span:100MHz ◦
3. Receiver setting (AVG Detector) : RBW:1MHz; VBW:30Hz; Span:20MHz ◦
4. Emission Level = Reading Level + Probe Factor + Cable Loss- PreAMP.
5. The average measurement was not performed when the peak measured data under the limit of average detection. If the readings given are average, peak measurement should also be supplied.

Product : Tablet PC
 Test Item : Harmonic Radiated Emission Data
 Test Site : No.3 OATS
 Test Mode : Mode 1: TX 11MHz (Channel 11)

Frequency	Cable Loss	Probe Factor	PreAMP	Reading Level	Emission Level	Margin	Limit
MHz	dB	dB/m	dB	dBuV	dBuV/m	dB	dBuV/m
Horizontal Peak Detector							
4924.000	4.31	31.43	34.69	47.86	48.91	25.09	74.00
7386.000	5.72	36.12	35.02	42.61	49.43	24.57	74.00
9848.000	7.13	38.00	35.07	49.17	59.23	14.77	74.00
12310.00	8.53	38.68	34.03	40.32	53.50	20.50	74.00
Average							
9848.000	7.13	38.00	35.07	43.03	53.09	0.91	54.00
Vertical Peak Detector							
4924.000	4.31	31.43	34.69	49.56	50.61	23.39	74.00
7386.000	5.72	36.12	35.02	43.43	50.25	23.75	74.00
9848.000	7.13	38.00	35.07	49.18	59.24	14.76	74.00
12310.00	8.53	38.68	34.03	40.16	53.34	20.66	74.00
Average							
9848.000	7.13	38.00	35.07	43.41	53.47	0.53	54.00

Note:

1. All Readings below 1GHz are Quasi-Peak, above are average value.
2. Receiver setting (Peak Detector) : RBW:1MHz; VBW:1MHz; Span:100MHz °
3. Receiver setting (AVG Detector) : RBW:1MHz; VBW:30Hz; Span:20MHz °
4. Emission Level = Reading Level + Probe Factor + Cable Loss- PreAMP.
5. The average measurement was not performed when the peak measured data under the limit of average detection. If the readings given are average, peak measurement should also be supplied.

Product : Tablet PC
 Test Item : General Radiated Emission Data
 Test Site : No.3 OATS
 Test Mode : Mode 1: TX 11MHz (Channel 1)

Frequency MHz	Cable Loss dB	Probe Factor dB/m	PreAMP dB	Reading Level dBuV	Emission Level dBuV/m	Margin dB	Limit dBuV/m
Horizontal:							
58.019	1.01	5.72	0.00	18.42	25.15	14.85	40.00
276.964	2.14	11.85	0.00	18.17	32.16	13.84	46.00
* 372.868	2.64	13.97	0.00	21.59	38.20	7.80	46.00
484.639	3.21	16.65	0.00	15.90	35.76	10.24	46.00
644.184	4.04	18.62	0.00	11.07	33.73	12.27	46.00
946.622	5.59	19.98	0.00	6.48	32.05	13.95	46.00
Vertical:							
71.659	1.08	6.60	0.00	21.64	29.32	10.68	40.00
* 241.460	1.96	11.06	0.00	23.84	36.86	9.14	46.00
561.172	3.60	19.04	0.00	11.01	33.66	12.34	46.00
740.549	4.53	20.87	0.00	8.69	34.09	11.91	46.00
898.583	5.35	20.90	0.00	5.94	32.20	13.80	46.00
941.772	5.57	21.27	0.00	6.10	32.93	13.07	46.00

Note:

1. All Readings below 1GHz are Quasi-Peak, above are average value.
2. “ * ”, means this data is the worst emission level.
3. Emission Level = Reading Level + Probe Factor + Cable Loss.

Product : Tablet PC
 Test Item : General Radiated Emission Data
 Test Site : No.3 OATS
 Test Mode : Mode 1: TX 11MHz (Channel 6)

Frequency	Cable	Probe	PreAMP	Reading	Emission	Margin	Limit
	Loss	Factor		Level	Level		
MHz	dB	dB/m	dB	dBuV	dBuV/m	dB	dBuV/m
Horizontal:							
176.717	1.62	8.43	0.00	21.42	31.47	12.03	43.50
312.320	2.32	12.10	0.00	19.46	33.88	12.12	46.00
709.809	4.37	18.15	0.00	11.36	33.88	12.12	46.00
827.901	4.98	19.26	0.00	11.18	35.42	10.58	46.00
* 954.535	5.64	20.02	0.00	10.09	35.74	10.26	46.00
979.564	5.76	20.54	0.00	15.12	41.43	12.57	54.00
Vertical:							
146.411	1.47	9.62	0.00	20.51	31.60	11.90	43.50
* 204.344	1.77	8.56	0.00	23.16	33.49	10.01	43.50
389.984	2.72	15.43	0.00	16.19	34.34	11.66	46.00
818.164	4.93	18.87	0.00	10.78	34.58	11.42	46.00
881.906	5.26	20.08	0.00	8.68	34.01	11.99	46.00
96.495	1.21	9.30	0.00	7.10	17.61	25.89	43.50

Note:

1. All Readings below 1GHz are Quasi-Peak, above are average value.
2. “ * ”, means this data is the worst emission level.
3. Emission Level = Reading Level + Probe Factor + Cable Loss.

Product : Tablet PC
 Test Item : General Radiated Emission Data
 Test Site : No.3 OATS
 Test Mode : Mode 1: TX 11MHz (Channel 11)

Frequency	Cable	Probe	PreAMP	Reading	Emission	Margin	Limit
MHz	Loss	Factor		Level	Level		
	dB	dB/m	dB	dBuV	dBuV/m	dB	dBuV/m

Horizontal:

125.799	1.36	11.57	0.00	19.44	32.38	11.12	43.50
434.262	2.95	15.75	0.00	15.14	33.84	12.16	46.00
519.985	3.40	16.52	0.00	13.07	32.98	13.02	46.00
678.452	4.21	18.52	0.00	11.29	34.02	11.98	46.00
* 869.688	5.19	19.34	0.00	11.39	35.91	10.09	46.00
91.763	1.19	10.39	0.00	20.20	31.77	11.73	43.50

Vertical:

142.178	1.45	10.00	0.00	18.32	29.76	13.74	43.50
198.049	1.73	8.27	0.00	22.28	32.28	11.22	43.50
224.780	1.87	9.35	0.00	23.10	34.32	11.68	46.00
366.476	2.60	14.67	0.00	17.75	35.02	10.98	46.00
* 511.411	3.35	16.67	0.00	15.28	35.30	10.70	46.00
650.311	4.06	17.89	0.00	12.95	34.90	11.10	46.00

Note:

1. All Readings below 1GHz are Quasi-Peak, above are average value.
2. “ * ”, means this data is the worst emission level.
3. Emission Level = Reading Level + Probe Factor + Cable Loss.

5. Band Edge

5.1. Test Equipment

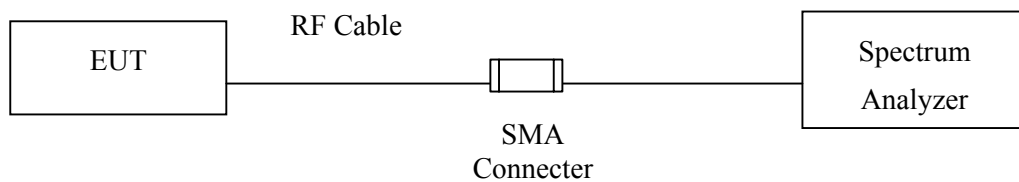
The following test equipments are used during the band edge tests:

Equipment	Manufacturer	Model No./Serial No.	Last Cal.
X Spectrum Analyzer	Advantest	R3272 / 72421194	May, 2003
X Test Receiver	R & S	ESCS 30 / 825442/14	May, 2003
X Spectrum Analyzer	Advantest	R3261C / 71720140	May, 2003
X Pre-Amplifier	HP	8447D/3307A01812	May, 2003
X Bilog Antenna	Chase	CBL6112B / 12452	Sep., 2003
X Horn Antenna	EM	EM6917 / 103325	May, 2003

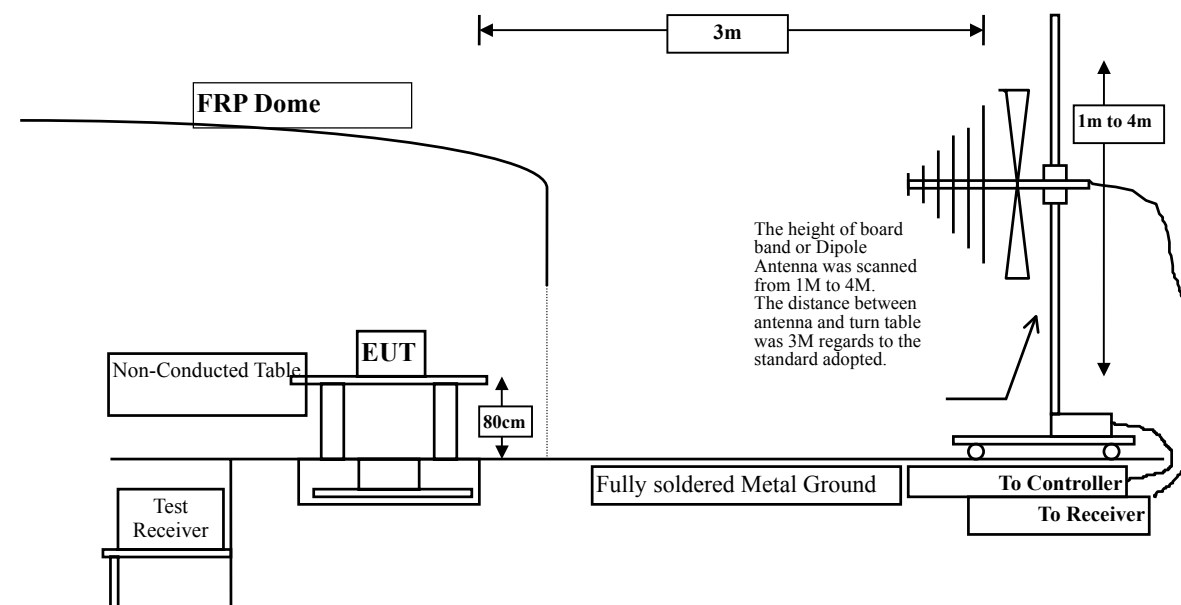
- Note: 1. All equipments that need to calibrate are with calibration period of 1 year.
 2. Mark "X" test instruments are used to measure the final test results.

5.2. Test Setup

RF Measurement:



RF Radiated Measurement:



5.3. Limits

In any 100 kHz bandwidth outside the frequency band in which the spread spectrum intentional radiator is operating, the radio frequency power that is produced by the intentional radiator shall be at least 20 dB below that in the 100 kHz bandwidth within the band that contains the highest level of the desired power, based on either an RF conducted or a radiated measurement. Attenuation below the general limits specified in Section 15.209(a) is not required. In addition, radiated emissions which fall in the restricted bands, as defined in Section 15.205(a), must also comply with the radiated emission limits specified in Section 15.209(a) (see Section 15.205(c)).

5.4. Test Procedure

The EUT and its simulators are placed on a turn table which is 0.8 meter above ground. The turn table can rotate 360 degrees to determine the position of the maximum emission level. The EUT was positioned such that the distance from antenna to the EUT was 3 meters.

The antenna can move up and down between 1 meter and 4 meters to find out the maximum emission level.

Both horizontal and vertical polarization of the antenna are set on measurement. In order to find the maximum emission, all of the interface cables must be manipulated according to ANSI C63.4:1992 on radiated measurement.

The bandwidth below 1GHz setting on the field strength meter (R&S Test Receiver ESCS 30)is 120 kHz, above 1GHz are 1 MHz.

5.5. Test Result of Band Edge

Product : Tablet PC
 Test Item : Band Edge Data
 Test Site : No.3 OATS
 Test Mode : Mode 1: TX 11MHz (Channel 1)

RF Radiated Measurement:

Channel No.	Frequency (MHz)	Required Limit (dBc)	Result
1 (Horizontal)	<2400	>20	Pass
1 (Vertical)	<2400	>20	Pass

Figure Channel 1: (Horizontal)

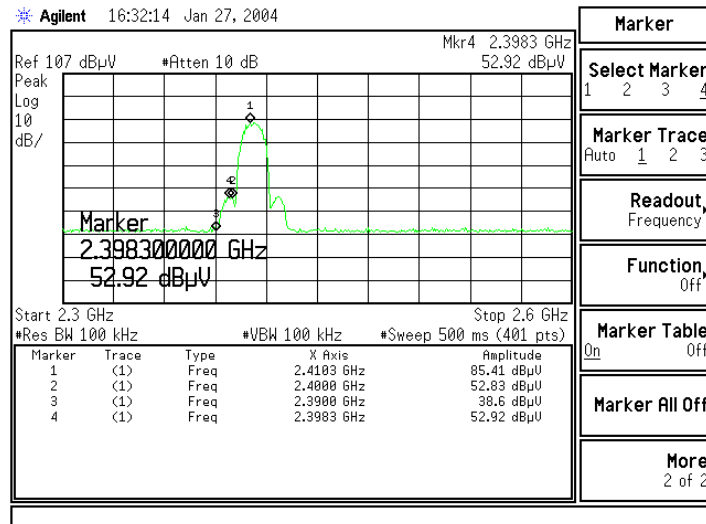
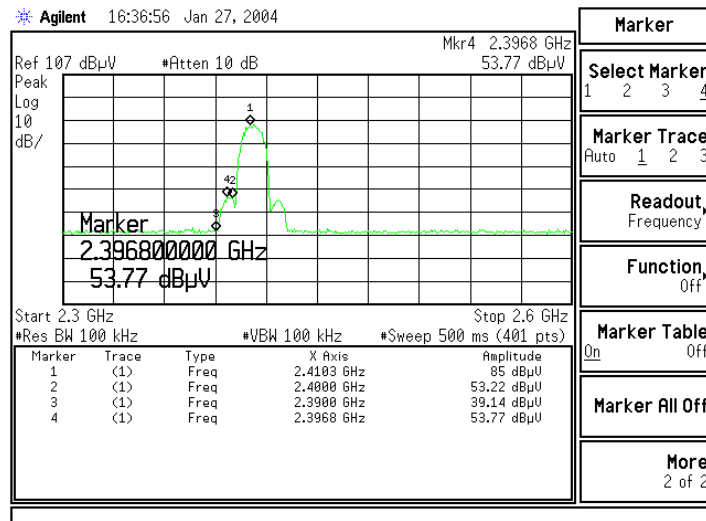


Figure Channel 1: (Vertical)



Product : Tablet PC
 Test Item : Band Edge Data
 Test Site : No.3 OATS
 Test Mode : Mode 1: TX 11MHz (Channel 11)

RF Radiated Measurement (Peak):

Channel No.	Frequency (MHz)	Reading Level (dBuV)	Emission Level (dBuV/m)	Peak Limit (dBuV/m)	Average Limit (dBuV/m)	Result
11(Horizontal)	2484.000	64.40	59.85	74.00	54.00	Pass
11(Vertical)	2488.000	57.14	52.59	74.00	54.00	Pass

RF Radiated Measurement (Average):

Channel No.	Frequency (MHz)	Reading Level (dBuV)	Emission Level (dBuV/m)	Peak Limit (dBuV/m)	Average Limit (dBuV/m)	Result
11(Horizontal)	2484.000	47.32	42.77	74.00	54.00	Pass
11(Vertical)	--	--	--	74.00	54.00	Pass

Figure Channel 11: (Horizontal)

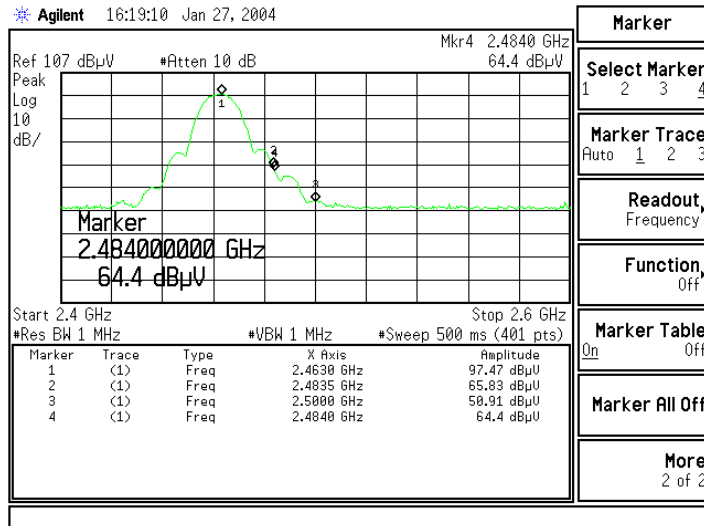
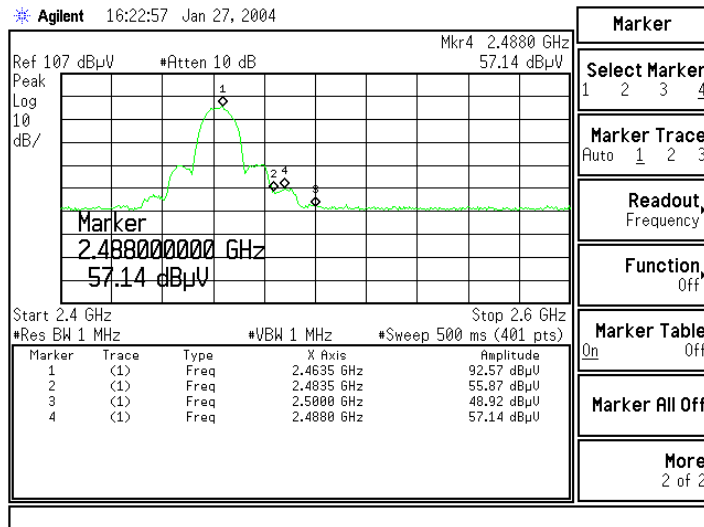


Figure Channel 11: (Vertical)



6. Occupied Bandwidth

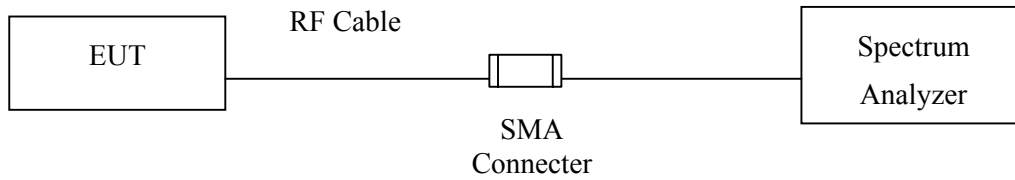
6.1. Test Equipment

The following test equipments are used during the radiated emission tests:

	Equipment	Manufacturer	Model No./Serial No.	Last Cal.
X	Spectrum Analyzer	Advantest	R3272 / 72421194	May, 2003

Note: 1. All equipment upon which need to calibrated are with calibration period of 1 year.
 2. Mark "X" test instruments are used to measure the final test results.

6.2. Test Setup



6.3. Limits

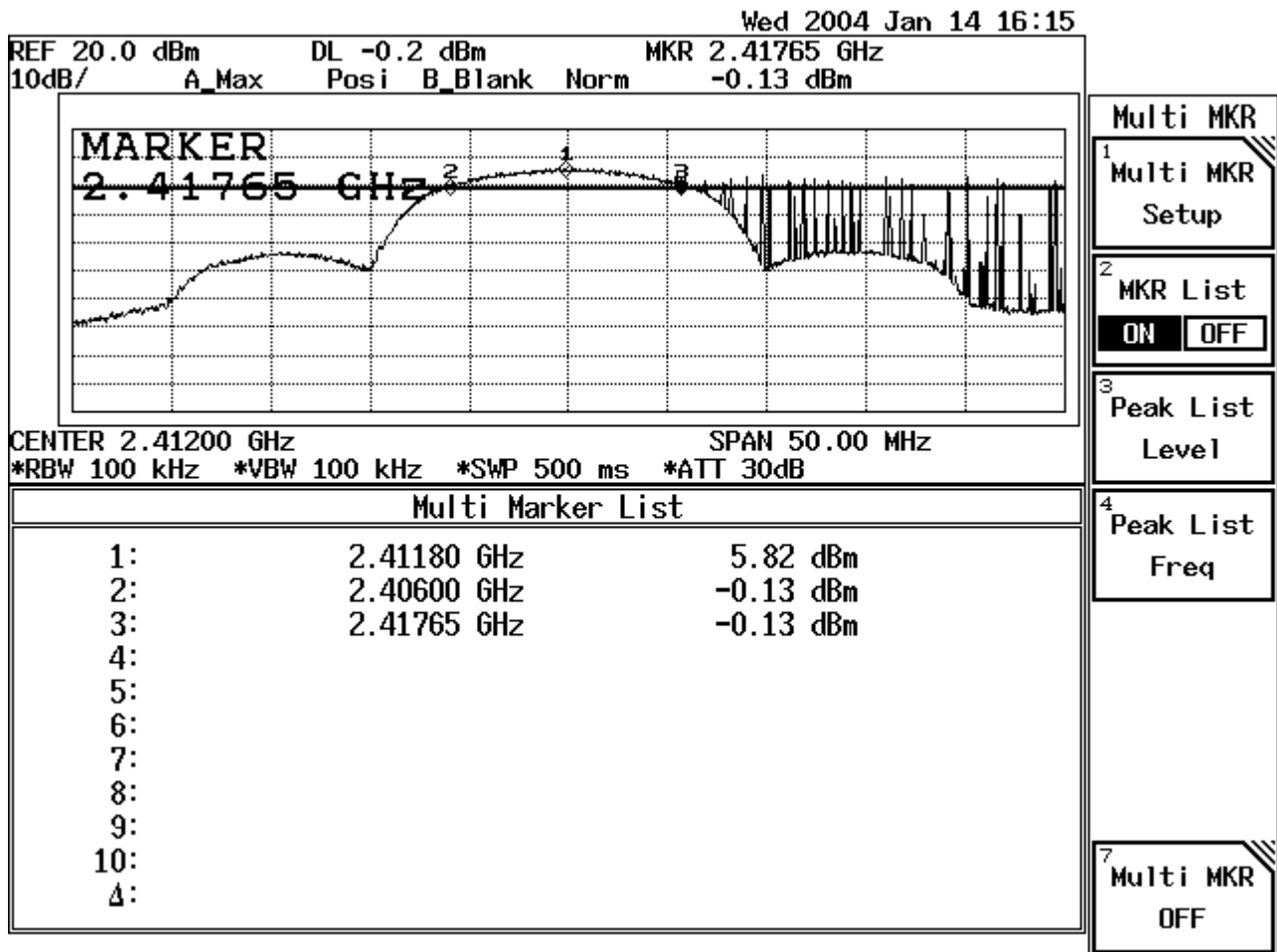
The minimum bandwidth shall be at least 500kHz.

6.4. Test Result of Occupied Bandwidth

Product : Tablet PC
 Test Item : Occupied Bandwidth Data
 Test Site : No.3 OATS
 Test Mode : Mode 1: TX 11MHz (Channel 1)

Channel No.	Frequency (MHz)	Measurement Level (kHz)	Required Limit (kHz)	Result
1 (11Mbps)	2417.65	11650	>500	Pass

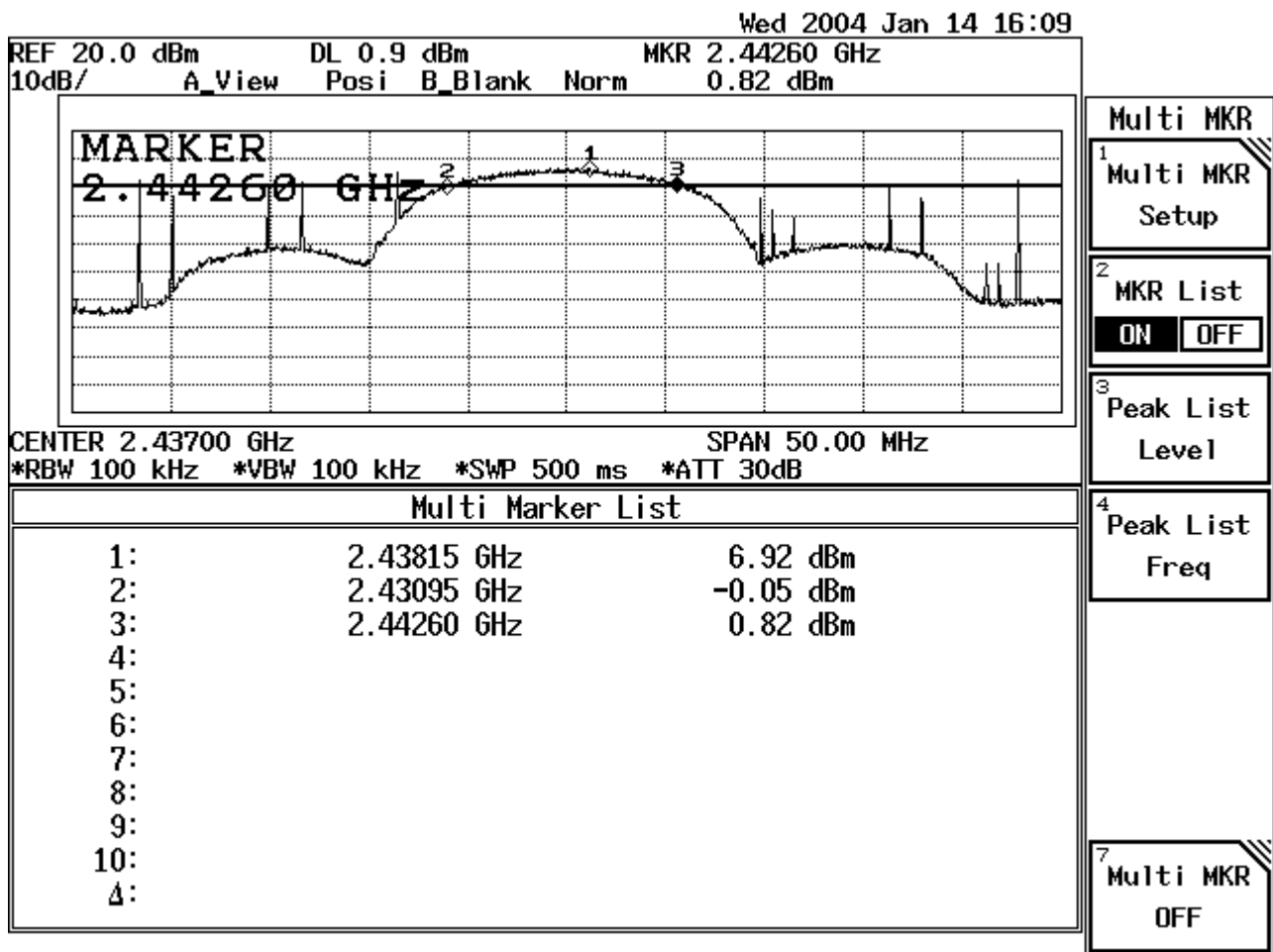
Figure Channel 1: 11Mbps



Product : Tablet PC
 Test Item : Occupied Bandwidth Data
 Test Site : No.3 OATS
 Test Mode : Mode 1: TX 11MHz (Channel 6)

Channel No.	Frequency (MHz)	Measurement Level (kHz)	Required Limit (kHz)	Result
6 (11Mbps)	2442.6	11650	>500	Pass

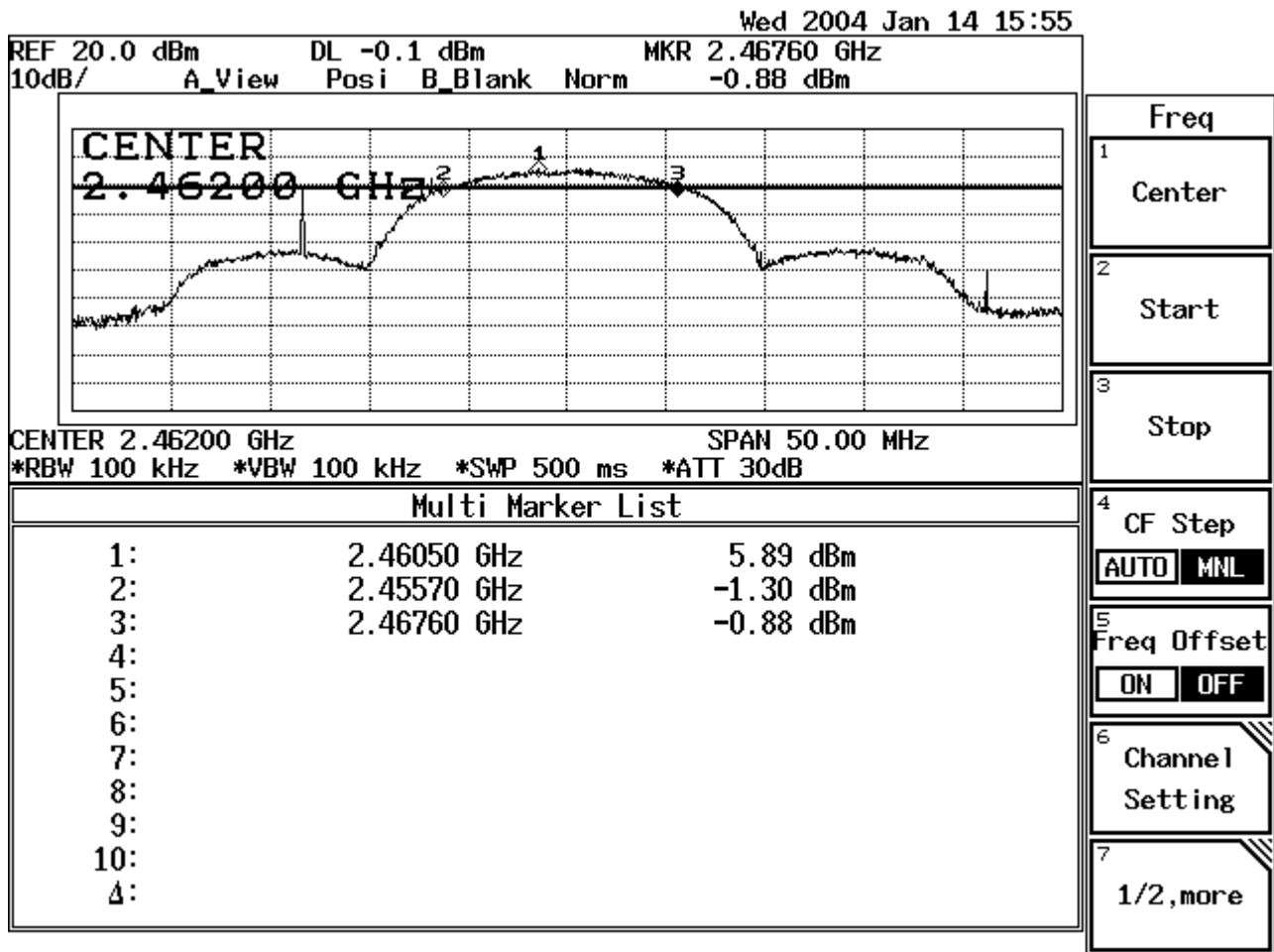
Figure Channel 6: 11Mbps



Product : Tablet PC
 Test Item : Occupied Bandwidth Data
 Test Site : No.3 OATS
 Test Mode : Mode 1: TX 11MHz (Channel 11)

Channel No.	Frequency (MHz)	Measurement Level (kHz)	Required Limit (kHz)	Result
11 (11Mbps)	2467.60	11900	>500	Pass

Figure Channel 11: 11Mbps



7. Power Density

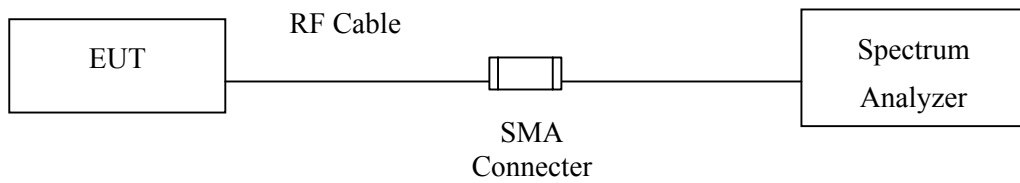
7.1. Test Equipment

The following test equipments are used during the radiated emission tests:

	Equipment	Manufacturer	Model No./Serial No.	Last Cal.
X	Spectrum Analyzer	Advantest	R3272 / 72421194	May, 2003

Note: 1. All equipment upon which need to calibrated are with calibration period of 1 year.
 2. Mark "X" test instruments are used to measure the final test results.

7.2. Test Setup



7.3. Limits

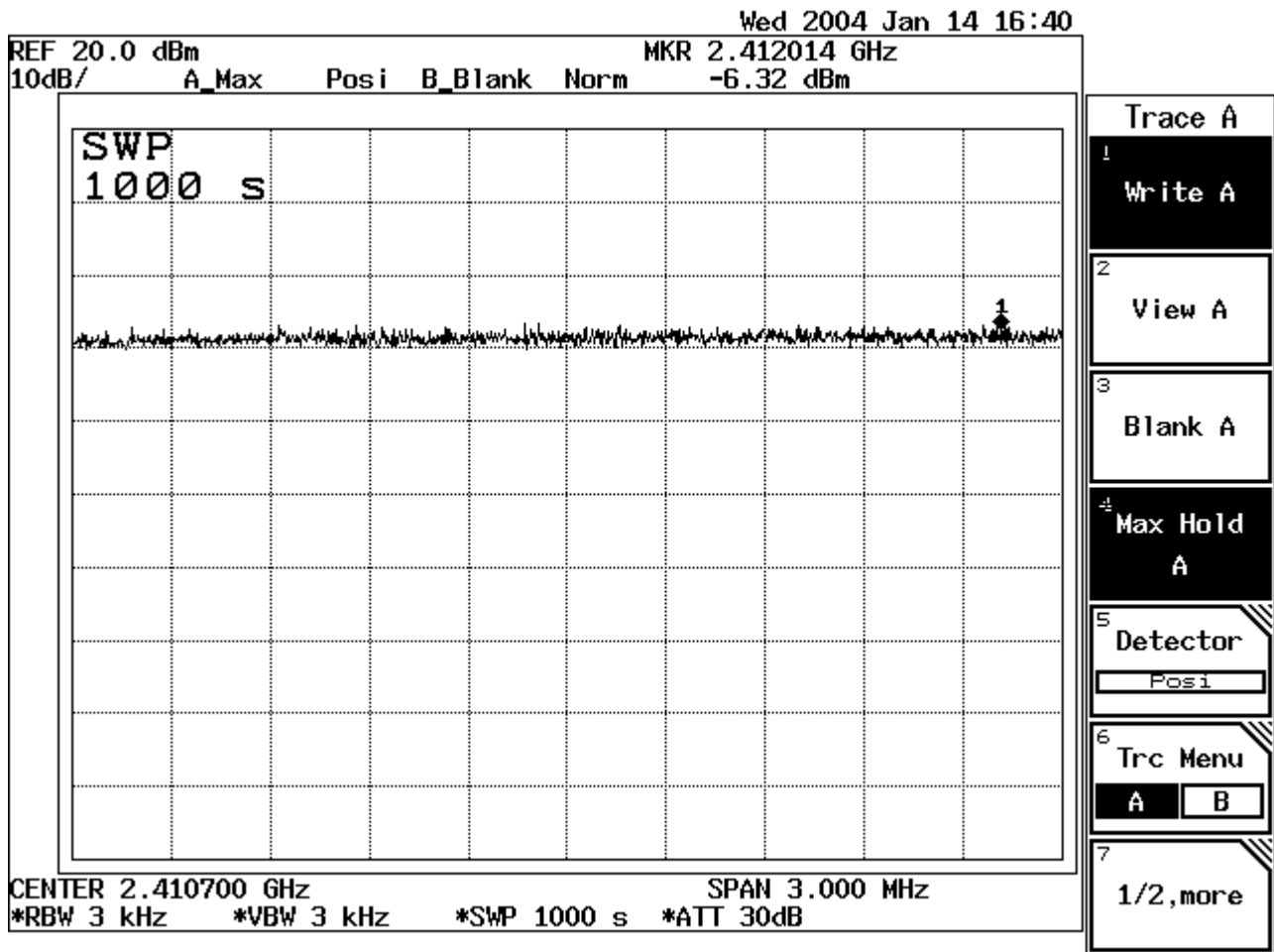
The transmitted power density averaged over any 1 second interval shall not be greater +8dBm in any 3kHz bandwidth.

7.4. Test Result of Power Density

Product : Tablet PC
 Test Item : Power Density Data
 Test Site : No.3 OATS
 Test Mode : Mode 1: TX 11MHz (Channel 1)

Channel No.	Frequency (MHz)	Measure Level (dBm)	Limit (dBm)	Result
1 (11Mbps)	2412.014	-6.32	< 8dBm	Pass

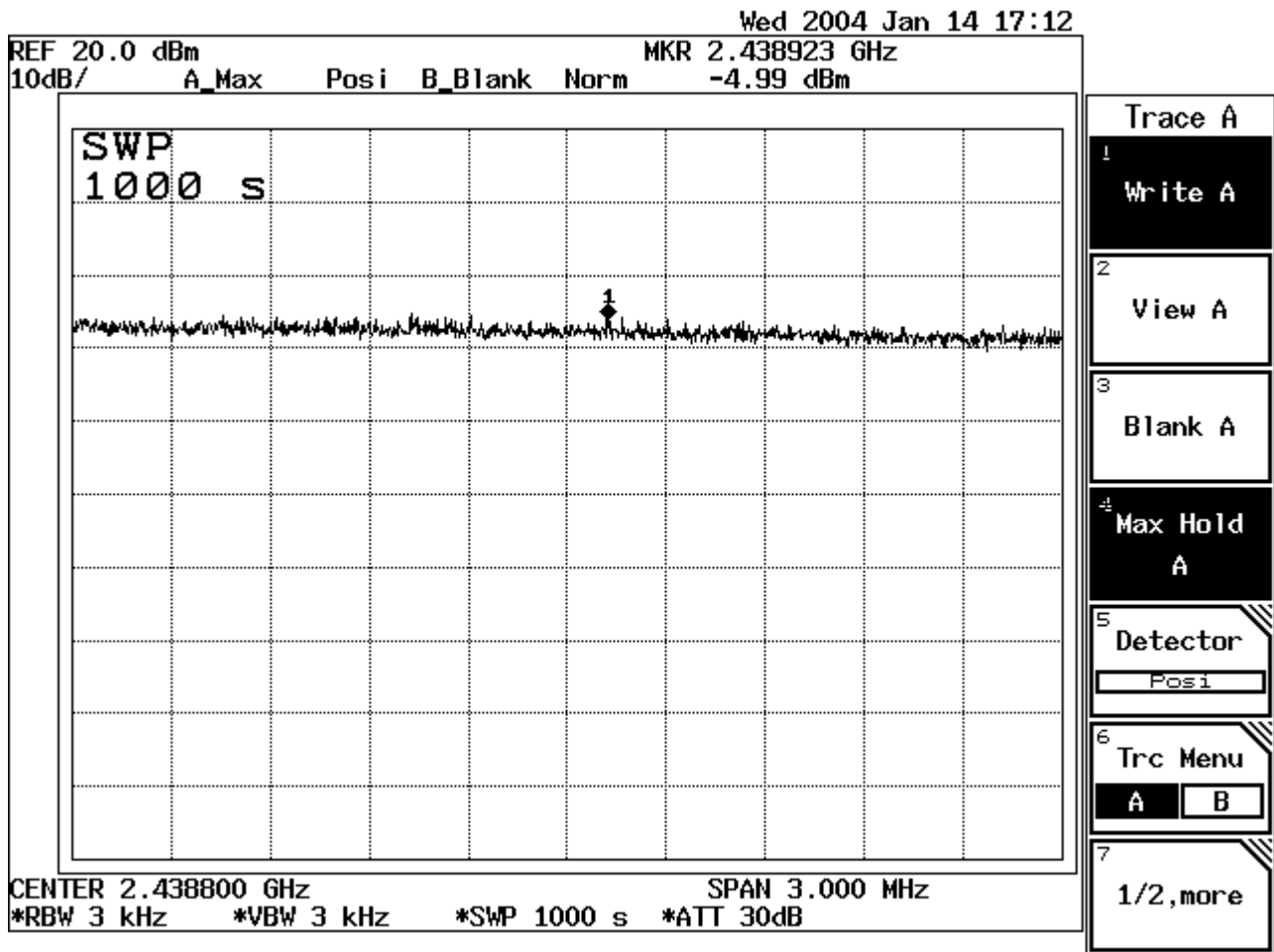
Figure Channel 1: 11Mbps



Product : Tablet PC
 Test Item : Power Density Data
 Test Site : No.3OATS
 Test Mode : Mode 1: TX 11MHz (Channel 6)

Channel No.	Frequency (MHz)	Measurement Level (dBm)	Required Limit (dBm)	Result
6 (11Mbps)	2438.923	-4.99	< 8dBm	Pass

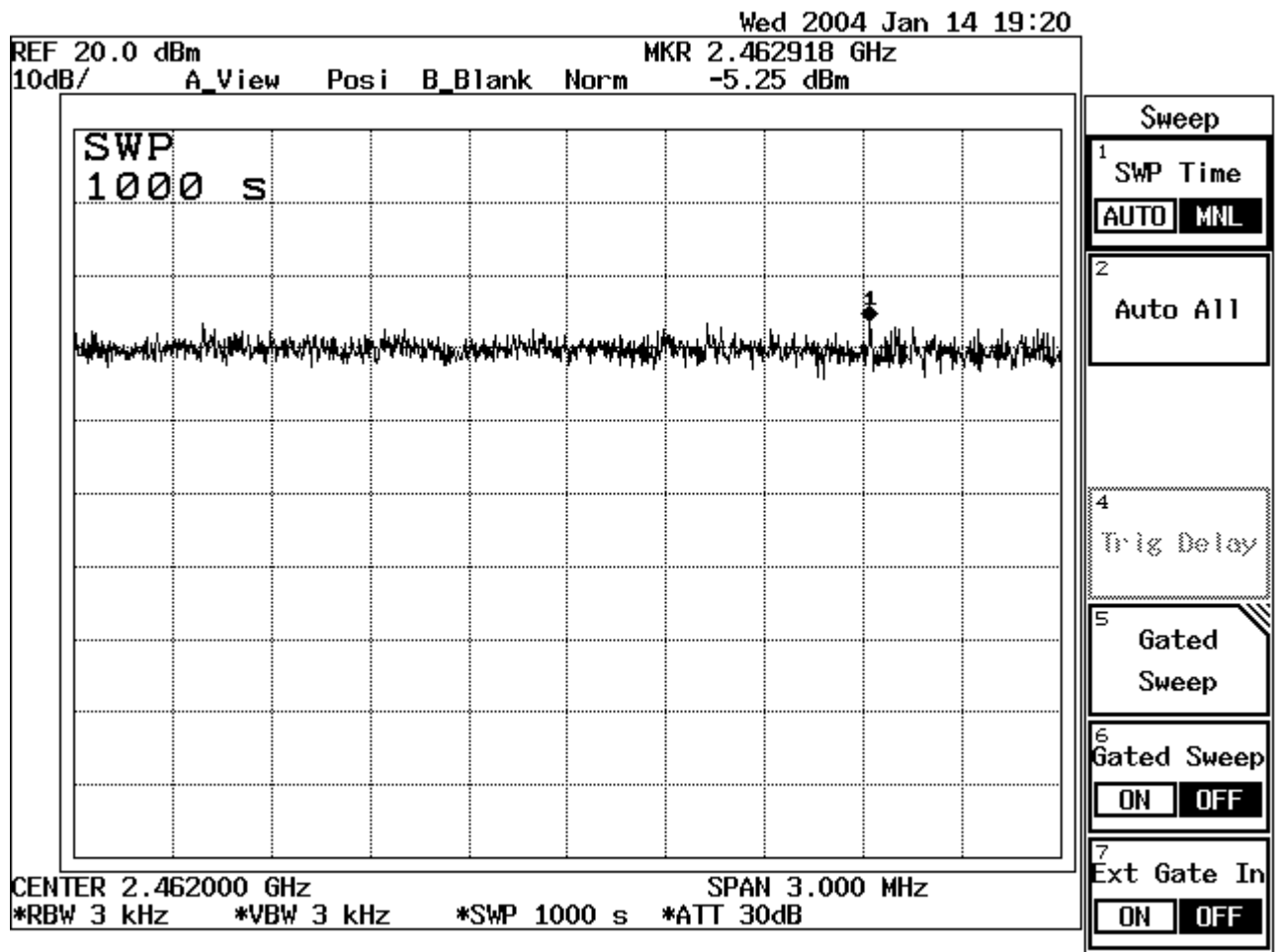
Figure Channel 6: 11Mbps



Product : Tablet PC
 Test Item : Power Density Data
 Test Site : No.3 OATS
 Test Mode : Mode 1: TX 11MHz (Channel 11)

Channel No.	Frequency (MHz)	Measurement Level (dBm)	Required Limit (dBm)	Result
11 (11Mbps)	2462.918	-5.25	< 8dBm	Pass

Figure Channel 11: 11Mbps



8. EMI Reduction Method During Compliance Testing

No modification was made during testing.

Attachment 1: EUT Test Photographs

Attachment 1: EUT Test Setup Photographs

Front View of Conducted Test



Back View of Conducted Test



Front View of Radiated Test



Back View of Radiated Test



Front View of High Frequency Radiated Test



Attachment 2: EUT Detailed Photographs

Attachment 2 : EUT Detailed Photographs

(1) EUT Photo



(2) EUT Photo



(3) EUT Photo



(4) EUT Photo



(5) EUT Photo



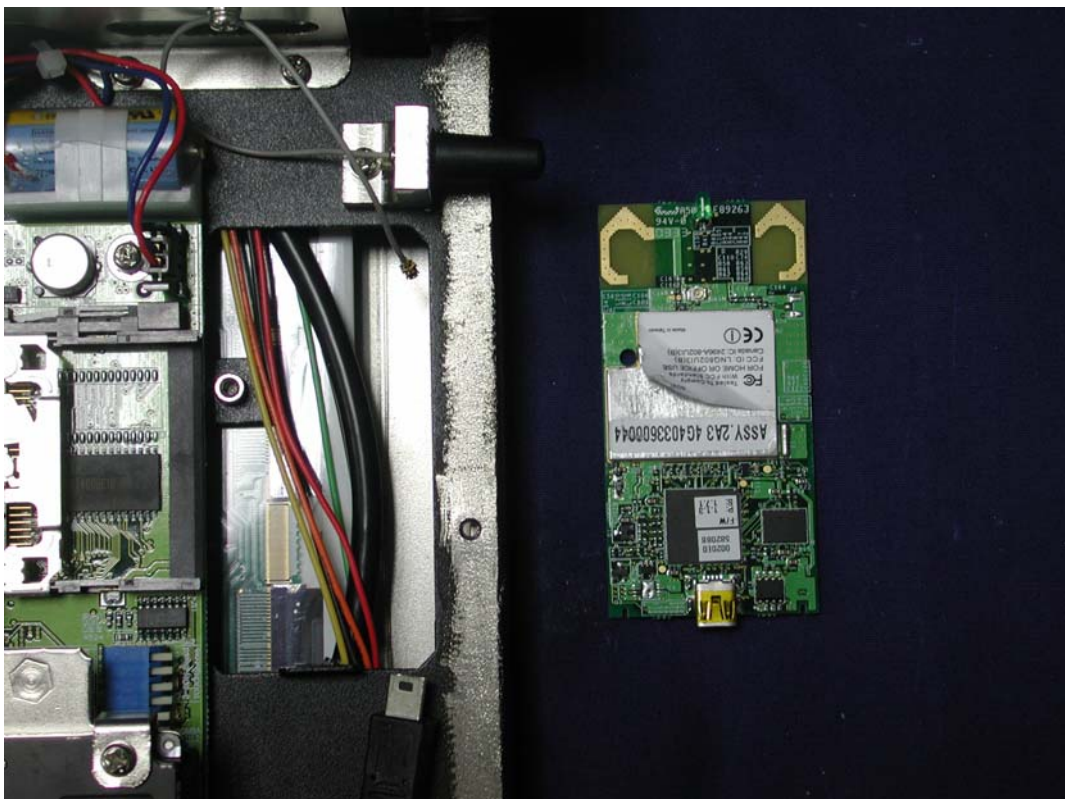
(6) EUT Photo



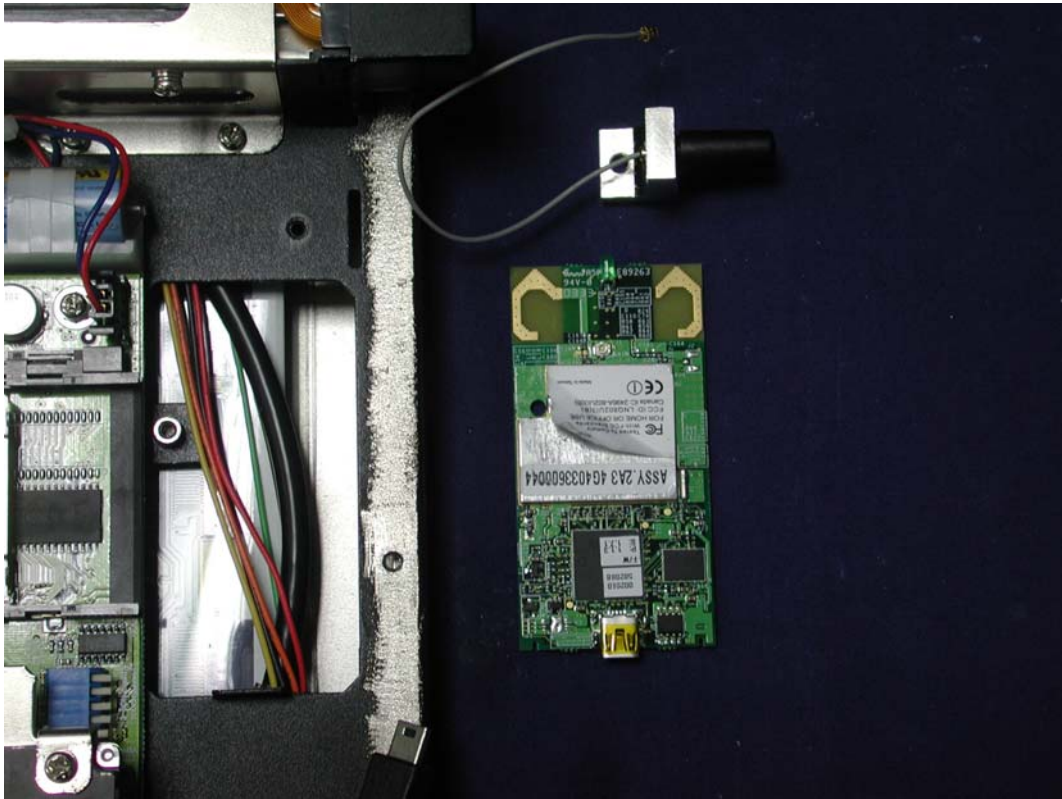
(7) EUT Photo



(8) EUT Photo



(9) EUT Photo



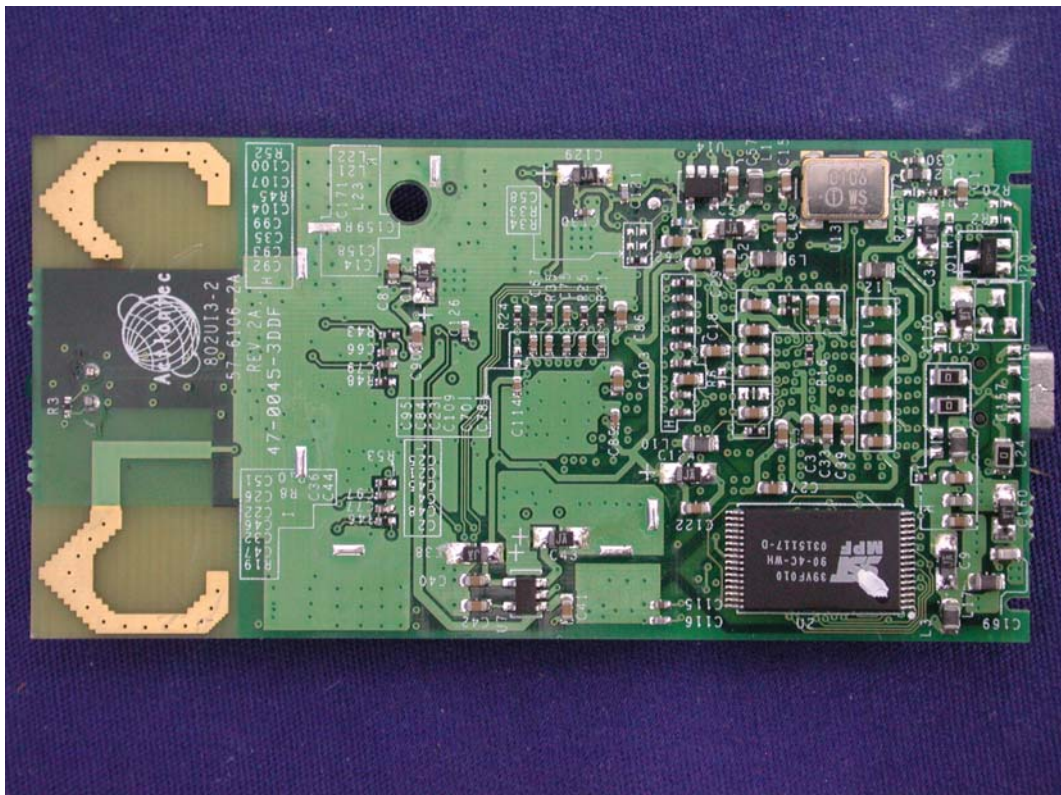
(10) EUT Photo



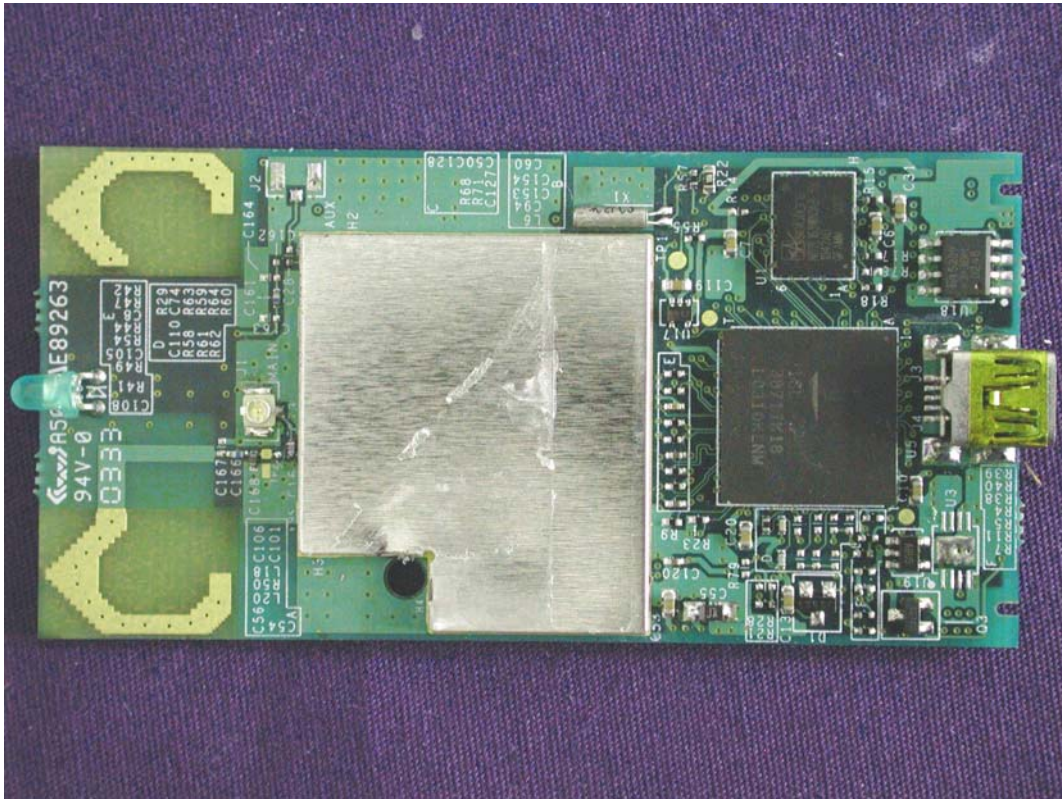
(11) EUT Photo



(12) EUT Photo



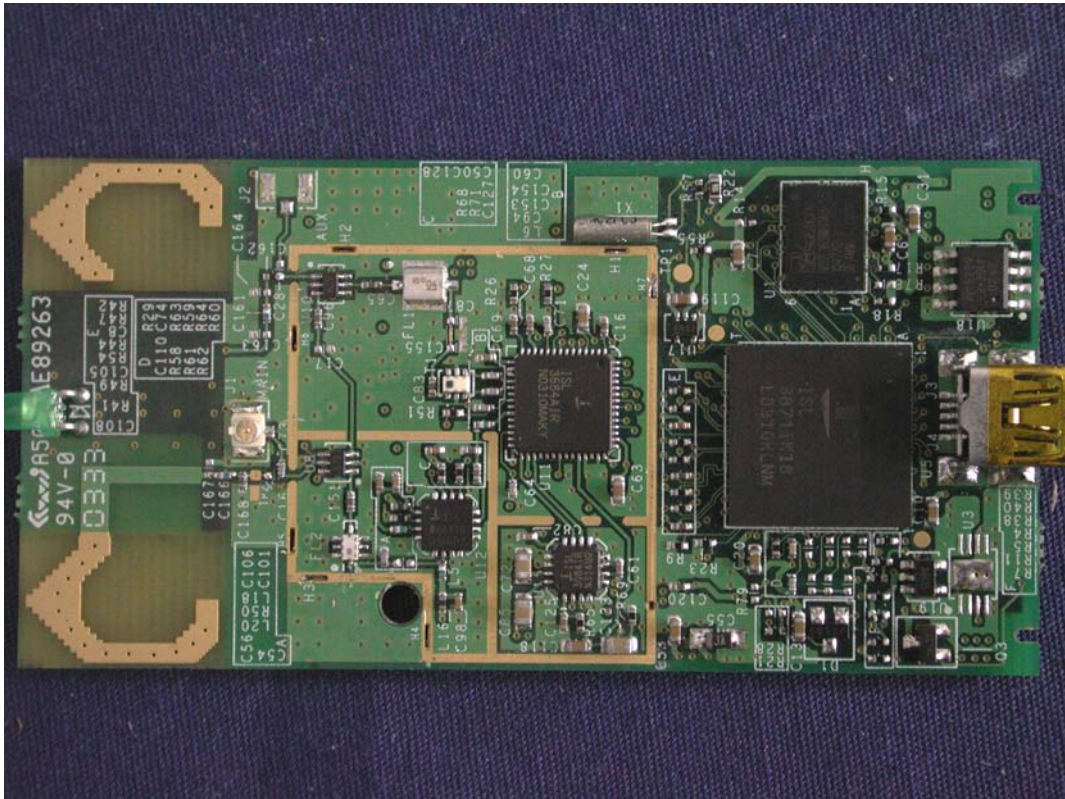
(13) EUT Photo



(14) EUT Photo



(15) EUT Photo



(15) EUT Photo

