

FCC PART 18
EMI MEASUREMENT AND TEST REPORT

For

Guangdong MD Microwave Oven Manufacturing Co., Ltd

Penglai Road, Beijiao, Shunde, Foshan, Guangdong Province, People's Republic of China

FCC ID: RSFEG031EMN

November 21, 2005

This Report Concerns: <input checked="" type="checkbox"/> Original Report	Equipment Type: Microwave cooking appliance
Test Engineer: Hansen Hu <i>Hansen Hu</i>	
Report Number: RSZ05102054	
Test Date: October 25-28, 2005	
Reviewed By: Chris Zeng <i>Chris Zeng</i>	
Prepared By: Bay Area Compliance Lab Corp. (ShenZhen) 6/F, the 3rd Phase of WanLi Industrial Building, ShiHua Road, FuTian Free Trade Zone, ShenZhen, Guangdong 518038, P.R.China Tel: +86-755-33320018 Fax: +86-755-33320008	

Note: The test report is specially limited to the above company and this particular sample only.
It may not be duplicated without prior written consent of Bay Area Compliance Lab Corp.
(ShenZhen). This report **must not** be used by the client to claim product certification, approval,
or endorsement by NVLAP, NIST or any agency of the US Government.

TABLE OF CONTENTS

GENERAL INFORMATION.....3
PRODUCT DESCRIPTION FOR EQUIPMENT UNDER TEST (EUT)3
OBJECTIVE3
RELATED SUBMITTAL(S)/GRANT(S).....3
TEST METHODOLOGY3
TEST FACILITY3
EXTERNAL CABLE LIST AND DETAILS4

OPERATING CONDITION/TEST CONFIGURATION.....5
JUSTIFICATION5
EQUIPMENT MODIFICATIONS5
CONFIGURATION OF TEST SETUP5
BLOCK DIAGRAM OF TEST SETUP5

CONDUCTED EMISSION.....6
MEASUREMENT UNCERTAINTY6
EUT SETUP6
EMI TEST RECEIVER SETUP7
TEST EQUIPMENT LIST AND DETAILS.....7
TEST PROCEDURE7
TEST RESULTS SUMMARY7
TEST DATA8
PLOT(S) OF TEST DATA8

RADIATION HAZARD MEASUREMENT10
TEST EQUIPMENT LIST AND DETAILS.....10
RADIATION HAZARD MEASUREMENT10
INPUT POWER.....10
LOAD FOR MICROWAVE COOKING APPLIANCES11
RF OUTPUT POWER MEASUREMENT.....11
OPERATING FREQUENCY MEASUREMENT13

RADIATED EMISSION DATA.....19
MEASUREMENT UNCERTAINTY19
EUT SETUP19
EMI TEST RECEIVER SETUP AND SPECTRUM ANALYZER.....20
TEST EQUIPMENT LIST AND DETAILS.....20
TEST PROCEDURE20
CORRECTED AMPLITUDE & MARGIN CALCULATION20
TEST RESULTS SUMMARY21
TEST DATA21

GENERAL INFORMATION

Product Description for Equipment Under Test (EUT)

The *Guangdong MD Microwave Oven Manufacturing Co., Ltd*'s model: EG031EOH-P or the "EUT" as referred to in this report is a Microwave cooking appliance which measures approximately 30 cmL x 43cmW x 51cmH, rated input voltage: AC 120 V/60 Hz.

The series products, model EG031EMN-X, AG031EMN-X, EM031EMN-X, AM031EMN-X, EG031EMN-X1, AG031EMN-X1, EM031EMN-X1, AM031EMN-X1 (the last letter M and N should be 0 to 9, or A to Z)(X should be P or S)(1 stands for with thermostat on M.G.T), we select EG031EOH-P to test.

** The test data gathered are from production sample, serial number: 001006, provided by the manufacturer, we receive the EUT on 2005-10-20.*

Objective

The following test report is prepared on behalf of *Guangdong MD Microwave Oven Manufacturing Co., Ltd* in accordance with Part 2, Subpart J, and Part 18, Subparts A, B and C of the Federal Communication Commissions rules.

The objective of the manufacturer is to determine compliance with FCC Part 18 limits.

Related Submittal(s)/Grant(s)

No related submittal(s).

Test Methodology

All measurements contained in this report were conducted with MP-5, FCC Methods of Measurements of Radio Noise Emissions from ISM Equipment, February 1986. All measurement was performed at Bay Area Compliance Laboratory Corporation. The radiated testing was performed at an antenna-to-EUT distance of 3 meters.

Test Facility

The Test site used by Bay Area Compliance Lab Corp. (ShenZhen) to collect test data is located in the 6/F, the 3rd Phase of WanLi Industrial Building, ShiHua Road, FuTian Free Trade Zone, ShenZhen, Guangdong 518038, P.R.China.

Test site at Bay Area Compliance Lab Corp. (ShenZhen) has been fully described in reports submitted to the Federal Communication Commission (FCC). The details of these reports have been found to be in compliance with the requirements of Section 2.948 of the FCC Rules on November 04, 2004. The facility also complies with the radiated and AC line conducted test site criteria set forth in ANSI C63.4-2003.

The Federal Communications Commission has the reports on file and is listed under FCC Registration No.: 382179. The test site has been approved by the FCC for public use and is listed in the FCC Public Access Link (PAL) database.

Additionally, Bay Area Compliance Lab Corp. (ShenZhen) is a National Institute of Standards and Technology (NIST) accredited laboratory, under the National Voluntary Laboratory Accredited Program (Lab Code 200707-0). The current scope of accreditations can be found at <http://ts.nist.gov/ts/hdocs/210/214/scopes/2007070.htm>

External Cable List and Details

Cable Description	Length (M)	From/Port	To
Unshielded Undetachable AC Power Cable	1.0	EUT	AC Power

OPERATING CONDITION/TEST CONFIGURATION

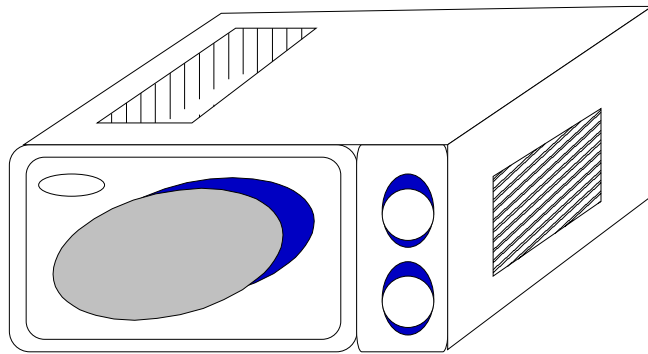
Justification

The EUT was provided for tests as a stand-alone device. It was prepared for testing in accordance with the manufacturer's instructions. The EUT was operated at maximum (continuous) RF output power. The loads consisted of water in a glass beaker in the amounts specified in the test procedure.

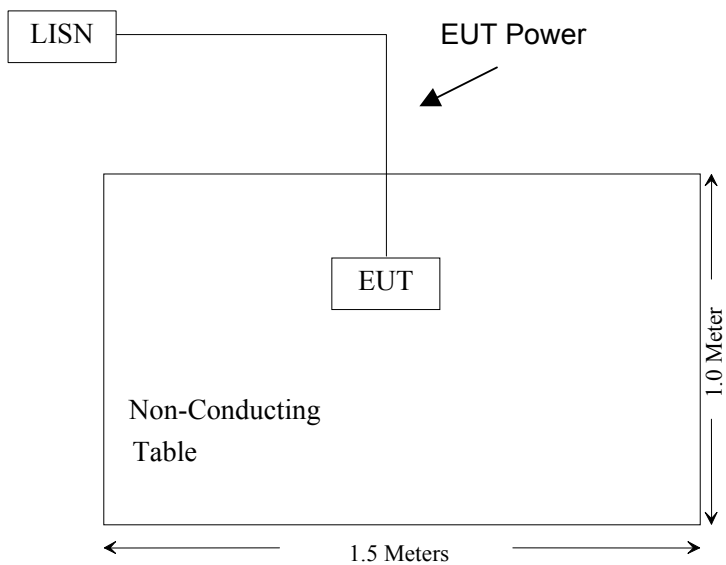
Equipment Modifications

Bay Area Compliance Lab Corp. (ShenZhen) has not done any modification on the EUT.

Configuration of Test Setup



Block Diagram of Test Setup



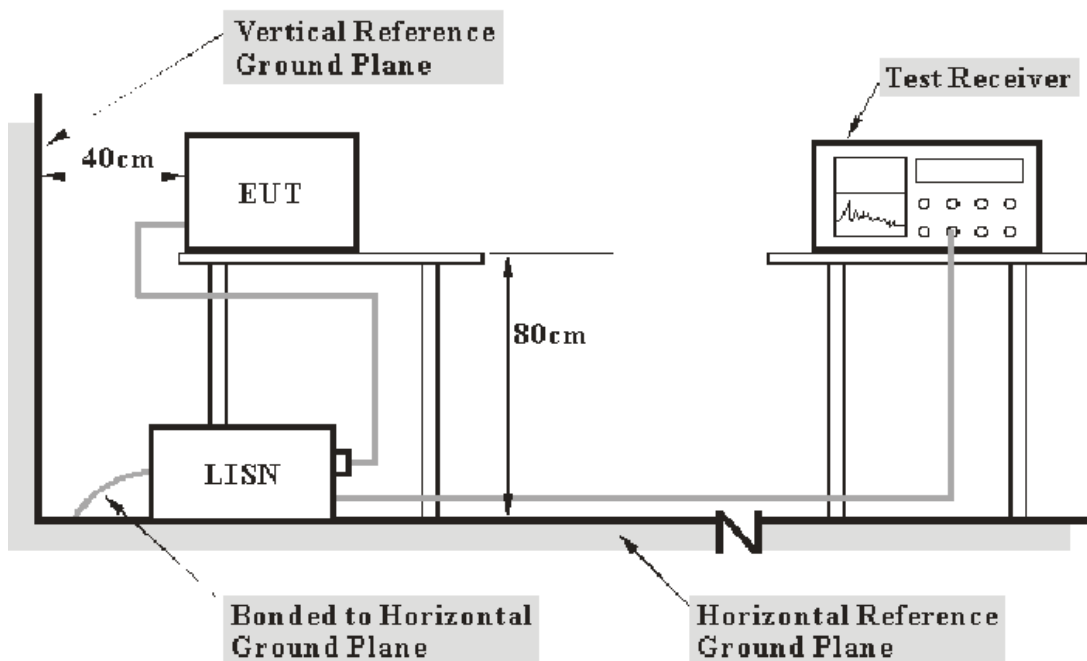
CONDUCTED EMISSION

Measurement Uncertainty

All measurements involve certain levels of uncertainties, especially in field of EMC. The factors contributing to uncertainties are spectrum analyzer, cable loss, and LISN.

Based on NIS 81, The Treatment of Uncertainty in EMC Measurements, the best estimate of the uncertainty of any conducted emissions measurement at Bay Area Compliance Lab Corp. (ShenZhen) is ± 2.4 dB.

EUT Setup



- Note:**
1. Support units were connected to second LISN.
 2. Both of LISNs (AMN) 80 cm from EUT and at the least 80 cm from other units and other metal planes support units.

The setup of EUT is according with per MP-5: 1986 measurement procedure. Specification used was with the FCC Part 18.

The EUT was connected to a 120 VAC/ 60Hz power source.

EMI Test Receiver Setup

The EMI test receiver was set to investigate the spectrum from 150 kHz to 30 MHz.

During the conducted emission test, the EMI test receiver was set with the following configurations:

<i>Frequency Range</i>	<i>IF B/W</i>
150 kHz – 30 MHz	9 kHz

Test Equipment List and Details

Manufacturer	Description	Model	Serial Number	Calibration Date	Calibration Due Date
Com-Power	L.I.S.N.	LI-200	12005	N/A	N/A
Com-Power	L.I.S.N.	LI-200	12008	N/A	N/A
Rohde & Schwarz	EMI Test Receiver	ESCS30	830245/006	2005-1-26	2006-1-26
Rohde & Schwarz	L.I.S.N.	ESH2-Z5	892107/021	2005-2-28	2006-2-28

* Com-Power's LISN were used as the supporting equipment.

* **Statement of Traceability:** Bay Area Compliance Lab Corp. (ShenZhen) attests that all calibrations have been performed in accordance to NVLAP requirements, traceable to the NIST.

Test Procedure

During the conducted emission test, the EUT power cord was connected to the outlet of the LISN.

Maximizing procedure were performed on the six (6) highest emissions of the EUT.

All data was recorded in the Quasi-peak and average detection mode.

Test Results Summary

According to the recorded data in following table, the EUT complied with the FCC PART 18, with the worst margin reading of:

-4.21 dB at 0.200 MHz in the Neutral conductor mode.

Test Data**Environmental Conditions**

Temperature:	25°C
Relative Humidity:	55%
ATM Pressure:	1001mbar

The testing was performed by Hansen Hu on 2005-10-25.

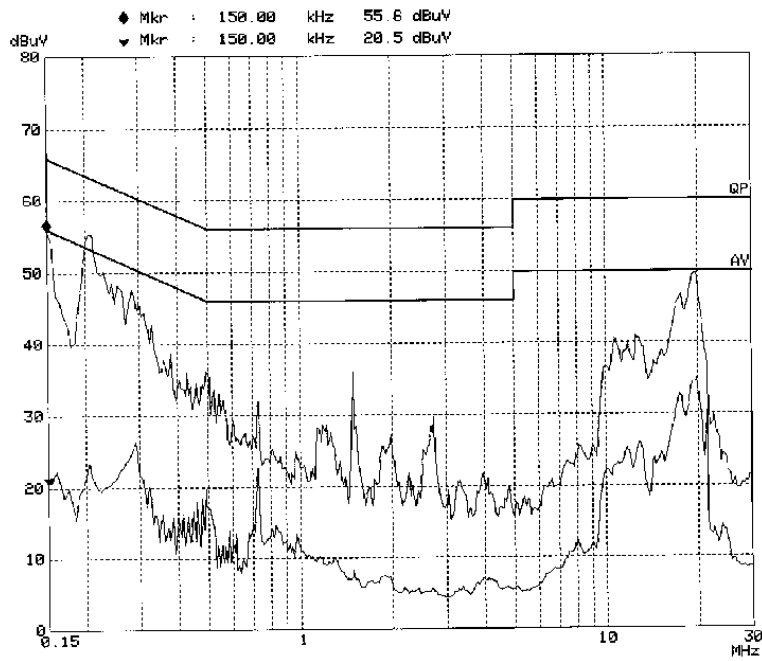
Test Mode: Max Power

Frequency MHz	LINE CONDUCTED EMISSIONS			FCC PART 18	
	Amplitude dB μ V	Detector QP/AV	Phase Line/Neutral	Limit dB μ V	Margin dB
0.200	59.40	QP	Neutral	63.61	-4.21
0.205	55.40	QP	Line	63.41	-8.01
19.770	50.00	QP	Neutral	60.00	-10.00
0.150	55.70	QP	Line	66.00	-10.30
19.710	49.50	QP	Line	60.00	-10.50
17.610	47.10	QP	Neutral	60.00	-12.90
17.655	46.80	QP	Line	60.00	-13.20
0.255	48.20	QP	Line	61.59	-13.39
0.290	46.10	QP	Line	60.52	-14.42
19.710	34.90	AV	Line	50.00	-15.10
0.260	46.10	QP	Neutral	61.43	-15.33
17.655	32.70	AV	Line	50.00	-17.30
17.610	31.60	AV	Neutral	50.00	-18.40
19.770	31.50	AV	Neutral	50.00	-18.50
10.705	40.30	QP	Neutral	60.00	-19.70
12.830	40.10	QP	Neutral	60.00	-19.90
0.290	26.30	AV	Line	50.52	-24.22
12.830	25.60	AV	Neutral	50.00	-24.40
10.705	24.10	AV	Neutral	50.00	-25.90
0.260	23.70	AV	Neutral	51.43	-27.73
0.200	25.30	AV	Neutral	53.61	-28.31
0.255	22.00	AV	Line	51.59	-29.59
0.205	23.50	AV	Line	53.41	-29.91
0.150	20.60	AV	Line	56.00	-35.40

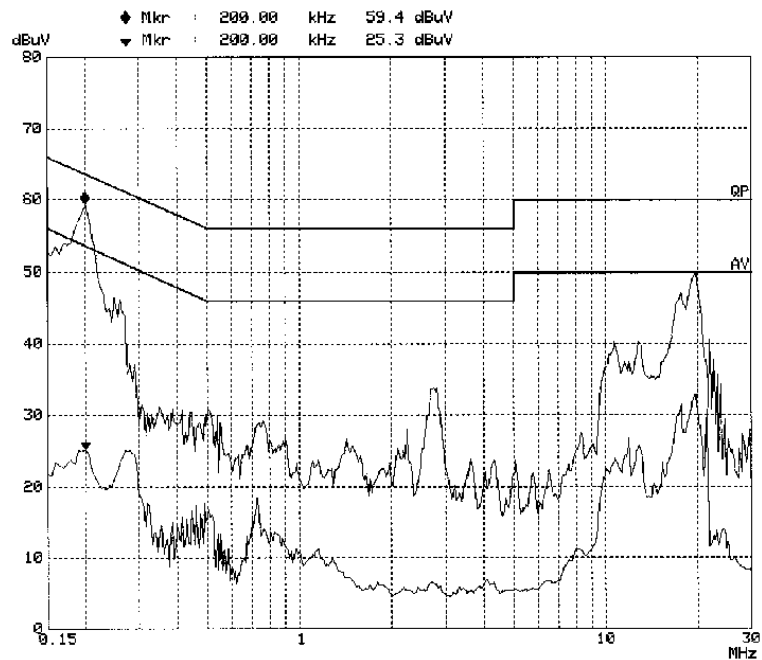
Plot(s) of Test Data

Plot(s) of Test Data is presented hereinafter as reference.

Line:



Neutral:



RADIATION HAZARD MEASUREMENT

Environmental Conditions

Temperature:	26°C
Relative Humidity:	58%
ATM Pressure:	1010mbar

Test Equipment List and Details

Manufacturer	Description	Model	Serial Number	Calibration Date	Calibration Due Date
Rohde & Schwarz	EMI Test Receiver	ESCI	100035	2005-8-17	2006-8-17
Sunol Sciences	Horn Antenna	DRH-118	A052604	2005-7-20	2006-7-20
HP	Amplifier	8449B	3008A00277	2005-8-17	2006-8-17
Ainuo	Digital Power Analyzer	8732B	028706117	2004-12-23	2005-12-23
HY	AC Power Source	9020117	GY053(1)	2005-8-21	2006-8-21
Holday	Leakage Meter	HI-1710	05/2731	2005-6-2	2006-6-2

* **Statement of Traceability:** Bay Area Compliance Lab Corp. (ShenZhen) attests that all calibrations have been performed in accordance to NVLAP requirements, traceable to the NIST.

Radiation Hazard Measurement

Radiation leakage was measured in the as-received condition with the oven door closed using a microwave leakage meter.

A 1000ml water load was placed in the center of the oven and the oven was operated at maximum output power.

There was no microwave leakage exceeding a power level of $0.72\text{mW}/\text{cm}^2$ observed at any point 5cm or more from the external surface of the oven.

A maximum of $1.0\text{mW}/\text{cm}^2$ is allowed in accordance with the applicable Federal Standards. Hence, microwave leakage in the as-received condition with the oven door closed was below the maximum allowed.

Input Power

Input power and current was measured using a power analyzer. A 1000ml water load was placed in the center of the oven and the oven was operated at maximum output power. A 1000ml water load was chosen for its compatibility with the procedure commonly used by manufacturers to determine their input ratings.

Input Voltage (Vac/Hz)	Input Current (amps)	Measured Input Power (watts)	Rated Input Power (watts)
120/60	13.83	1465	1500

Based on the measured input power, the EUT was found to be operating within the intended specifications.

Load for Microwave cooking appliances

For all measurements, the energy developed by the oven was absorbed by a dummy load consisting of a quantity of tap water in a beaker. If the oven was provided with a shelf or other utensil support, this support was in its initial normal position. For ovens rated at 1000 watts or less power output, the beaker contained quantities of water as listed in the following subparagraphs. For ovens rated at more than 1000watts output, each quantity was increased by 50% for each 500watts or fraction thereof in excess of 1000watts. Additional beakers were used if necessary.

- Load for power output measurement: 1000 milliliters of water in the beaker located in the center of the oven.
- Load for frequency measurement: 1000 milliliters of water in the beaker located in the center of the oven.
- Load for measurement of radiation on second and third harmonic: Two loads, one of 700 and the other of 300 milliliters, of water are used. Each load is tested both with the beaker located in the center of the oven and with it in the right front corner.

The RF output power is rated at 1000 W

Load used for power output measurement = 1000 milliliters of water
 Load used for frequency measurement = 1000 milliliters of water
 Load used for harmonic measurement = 700 & 300 milliliters of water
 Load used for other measurement = 700 milliliters of water

RF Output Power Measurement

The Caloric Method was used to determine maximum RF output power. The initial temperature of the water load was measured. The water load was placed in the center of the oven. The oven was operated at maximum output power for 200 seconds, the temperature of the water was re-measured.

Quality of Water (ml)	Starting Temperature (°C)	Final Temperature (°C)	Elapsed Time (Seconds)
1000	24	68	200

Power = (4.2 joules/calorie)(volume in milliliters)(temperature rise)/(time in seconds)

Power = 4.2 joules/calorie x 1000 x (68-24) / 200

Power = 924 watts

The measurement output power was found to be less than 500watts. Therefore, in accordance with Section 18.305 of Subpart-C, the measured out-of-band emissions were compared to the limit of 25µV/meter at a 300-meter measurement distance.

- The measured output power was found to exceed 500watts. Therefore, in accordance with Section 18.305 of Subpart-C, the measured out-of-band emissions were compared with the limit calculated as following:

$$\text{LFS} = 25 * \text{SQRT}(\text{Power Output}/500)$$

$$\text{LFS} = 25 * \text{SQRT}(924/500)$$

$$\text{LFS} \approx 33.99$$

Where: LFS is the maximum allowable field strength for out-of-band emissions in $\mu\text{V}/\text{meter}$ at a 300-meter measurement distance. Power Output is the measured output power in watts.

Manufacturer	Model Number	LFS	dB($\mu\text{V}/\text{M}$)	dB($\mu\text{V}/\text{M}$)@3m
Guangdong MD Microwave Oven Manufacturing Co., Ltd	EG031EOH-P	33.99	30.63	70.63

Operating Frequency Measurement

Variation in Operating Frequency with Time

The operating frequency was measured using a spectrum analyzer. Starting with the EUT at room temperature, a 1000ml water load was placed in the center of the oven and the oven was operated at maximum output power. The fundamental operating frequency was monitored until the water load was reduced to 20 percent of the original load.

The results of this test are as follows:

Manufacturer	Model Number	Minimum Frequency (MHz)	Maximum Frequency (MHz)
Guangdong MD Microwave Oven Manufacturing Co., Ltd	EG031EOH-P	2450.2	2452.2

Refer to data pages for details of the variation in operating frequency with time measurement.

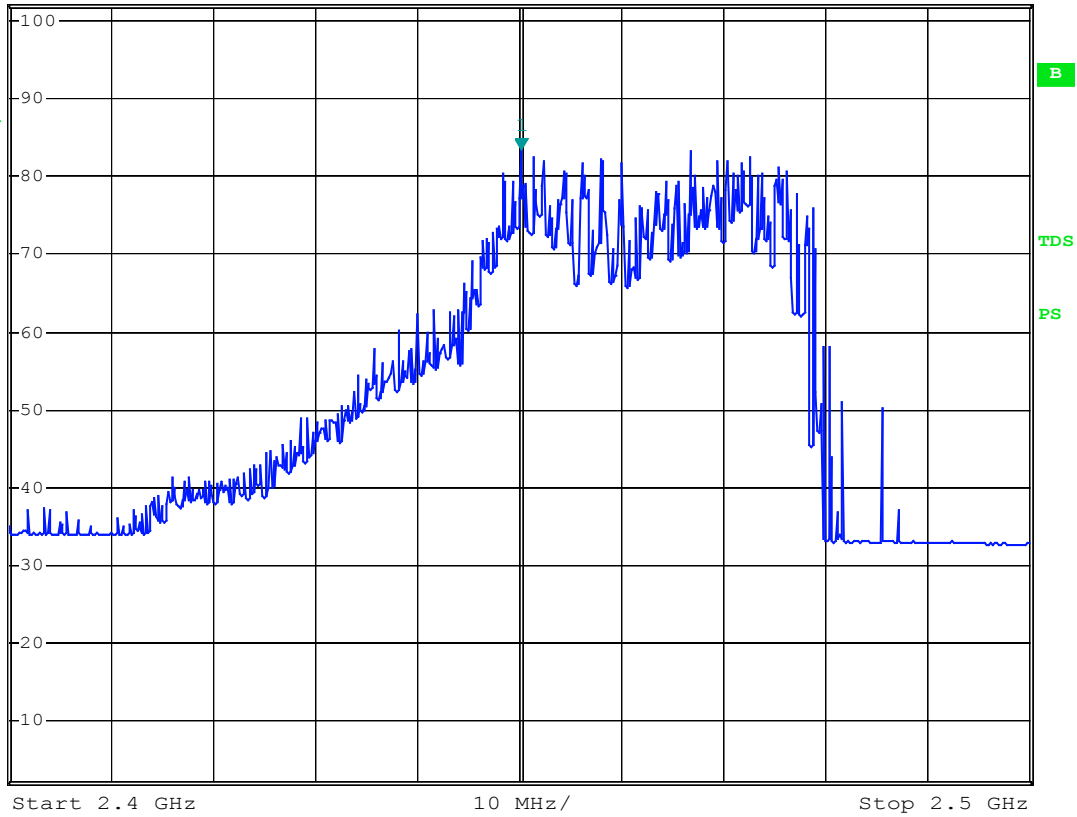


*RBW 1 MHz Marker 1 [T1]
*VBW 3 MHz 83.56 dBμV
*SWT 1 s 2.450200000 GHz

Ref 102 dBμV

*Att 10 dB

1 AV *
MAXH



md microwave cooking appliance EG031EMN-X VS TIME

Date: 28.OCT.2005 08:41:38

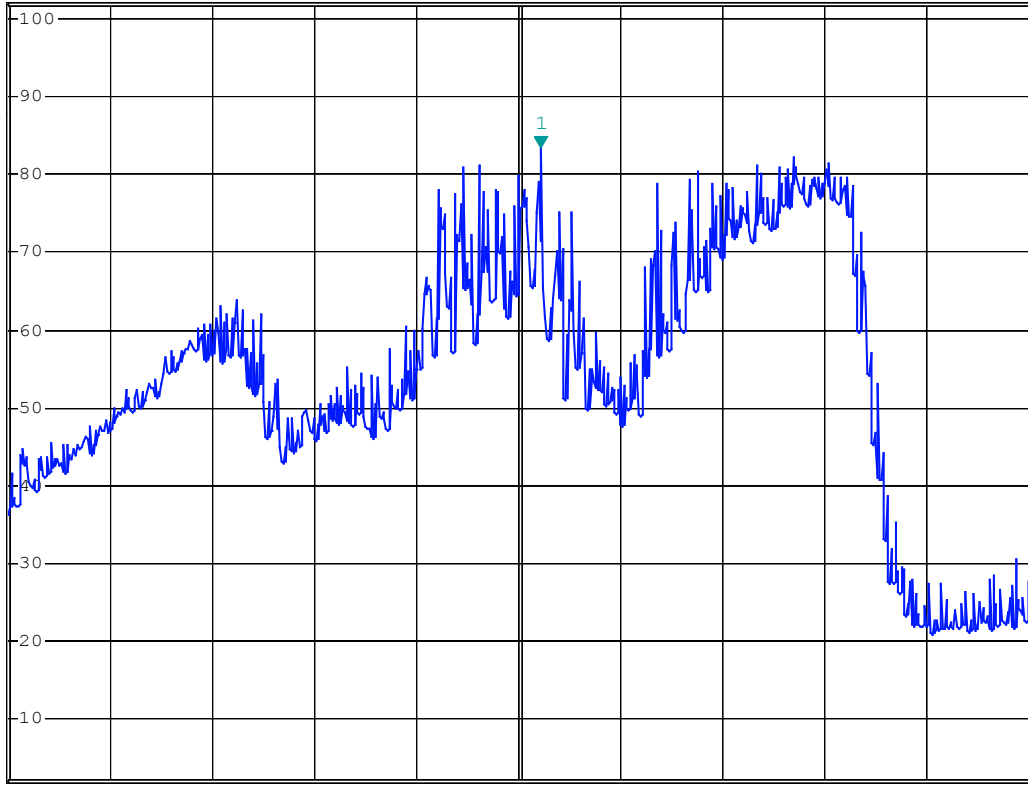


*RBW 1 MHz Marker 1 [T1]
*VBW 3 MHz 83.62 dBμV
*SWT 1 s 2.45220000 GHz

Ref 102 dBμV

*Att 10 dB

1 AV*
MAXH



Start 2.4 GHz

10 MHz/

Stop 2.5 GHz

B

TDS

PS

md microwave cooking appliance EG031EMN-X VS TIME

Date: 28.OCT.2005 10:02:06

Variation in Operating Frequency with Line Voltage

The EUT was operated / warmed by at least 10 minutes of use with a 1000ml water load at room temperature at the beginning of the test. Then the operating frequency was monitored as the input voltage was varied between 80 and 125 percent of the nominal rating.

The results of this test are as follows:

Line voltage varied from 96Vac to 150Vac.

Manufacturer	Model Number	Minimum Frequency (MHz)	Maximum Frequency (MHz)
Guangdong MD Microwave Oven Manufacturing Co., Ltd	EG031EOH-P	2479.8	2480.4

Please refer to following pages for details of the variation in operating frequency with line voltage measurement.

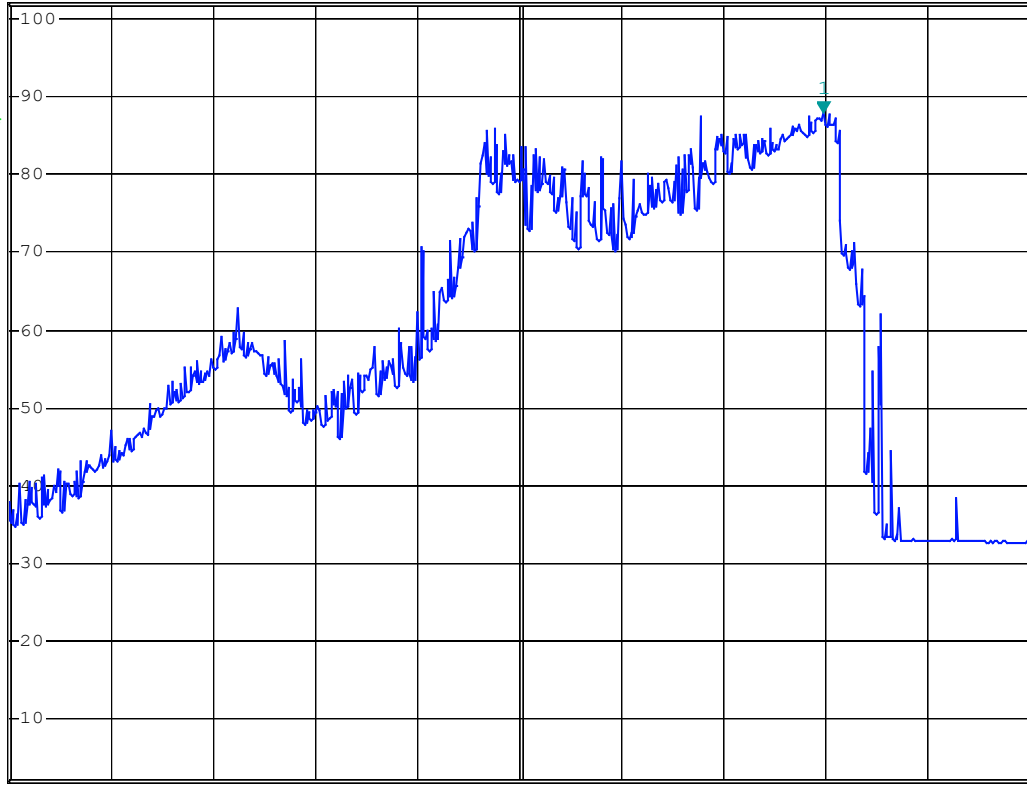


*RBW 1 MHz Marker 1 [T1]
*VBW 3 MHz 87.85 dBμV
*SWT 1 s 2.479800000 GHz

Ref 102 dBμV

*Att 10 dB

1 AV*
MAXH



Start 2.4 GHz

10 MHz/

Stop 2.5 GHz

B

TDS

PS

md microwave cooking appliance EG031EMN-X VS voltage

Date: 28.OCT.2005 09:09:37

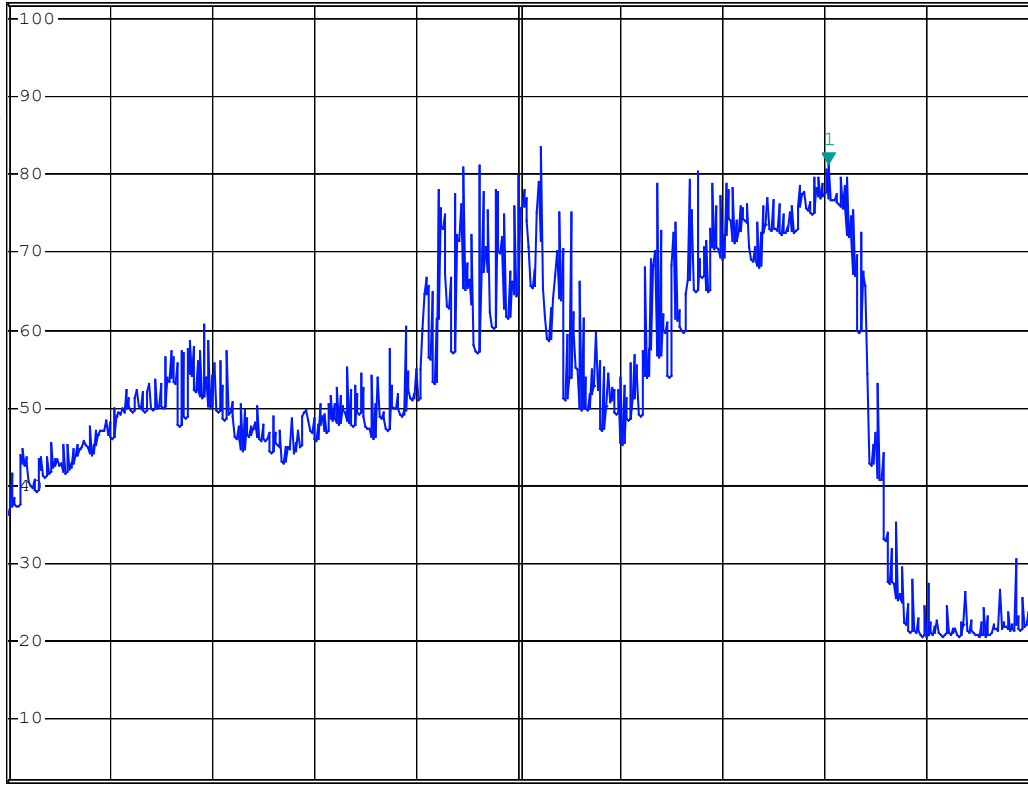


*RBW 1 MHz Marker 1 [T1]
*VBW 3 MHz 81.49 dBμV
*SWT 1 s 2.480400000 GHz

Ref 102 dBμV

*Att 10 dB

1 AV*
MAXH



Start 2.4 GHz

10 MHz/

Stop 2.5 GHz

B

TDS

PS

md microwave cooking appliance EG031EMN-X VS VOLTAGE

Date: 28.OCT.2005 09:52:26

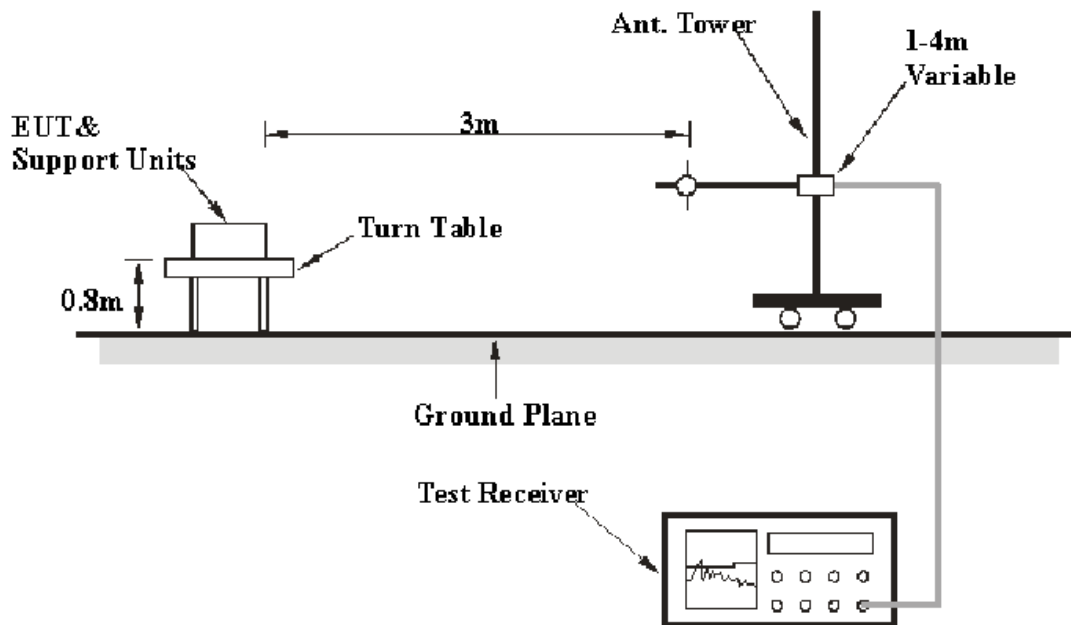
RADIATED EMISSION DATA

Measurement Uncertainty

All measurements involve certain levels of uncertainties, especially in field of EMC. The factors contributing to uncertainties are spectrum analyzer, cable loss, antenna factor calibration, antenna directivity, antenna factor variation with height, antenna phase center variation, antenna factor frequency interpolation, measurement distance variation, site imperfections, mismatch (average), and system repeatability.

Based on NIS 81, The Treatment of Uncertainty in EMC Measurements, the best estimate of the uncertainty of a radiation emissions measurement at Bay Area Compliance Lab Corp. (ShenZhen) is ± 4.0 dB.

EUT Setup



The radiated emission tests were performed in the 3 meters chamber A test site, using the setup accordance with the FCC MP - 5. The specification used was the FCC part 18.

The EUT was connected to 120 VAC/60 Hz power source.

EMI Test Receiver Setup and Spectrum Analyzer

The system was investigated from 30 MHz to 25 GHz.

During the radiated emission test, the spectrum analyzer was set with the following configurations:

<i>Frequency Range</i>	<i>R B/W</i>	<i>Video B/W</i>	<i>IF B/W</i>
30 – 1000 MHz	100 kHz	300 kHz	120 kHz
Above 1000 MHz	1 MHz	10 Hz	

Test Equipment List and Details

Manufacturer	Description	Model	Serial Number	Calibration Date	Calibration Due Date
Rohde & Schwarz	EMI Test Receiver	ESCI	100035	2005-8-17	2006-8-17
HP	Amplifier	HP8447D	2944A09795	2005-8-17	2006-8-17
Sunol Sciences	Broadband Antenna	JB1	A040904-1	2005-4-28	2006-4-28
Rohde & Schwarz	Spectrum Analyzer	FSEM30	849720/019	2004-11-10	2005-11-10
Sunol Sciences	Horn Antenna	DRH-118	A052604	2005-7-20	2006-7-20
HP	Preamplifier	8449B	3008A00277	2005-8-17	2006-8-17

* **Statement of Traceability:** Bay Area Compliance Lab Corp. (ShenZhen) attests that all calibrations have been performed per the NVLAP requirements, traceable to NIST.

Test Procedure

For the radiated emissions test, the EUT power cord was connected to the AC floor outlet.

Maximizing procedure was performed on the six (6) highest emissions to ensure that the EUT complied with all installation combinations.

All data was recorded in the Quasi-peak detection mode. from 30 MHz to 1000 MHz, and average detection mode above 1 GHz.

The EUT was in the normal (naïve) operating mode during the final qualification test to represent the worst results.

Corrected Amplitude & Margin Calculation

The Corrected Amplitude is calculated by adding the Antenna Loss and Cable Loss, and subtracting the Amplifier Gain from the Meter Reading. The basic equation is as follows:

$$\text{Corr. Ampl.} = \text{Meter Reading} + \text{Antenna Loss} + \text{Cable Loss} - \text{Amplifier Gain}$$

The “**Margin**” column of the following data tables indicates the degree of compliance with the applicable limit. For example, a margin of -7dB means the emission is 7dB below the limit. The equation for margin calculation is as follows:

$$\text{Margin} = \text{Corr. Ampl.} - \text{Limit}$$

Test Results Summary

According to the data in the following table, the EUT complied with the FCC Part 18, with the worst margin reading of:

30MHz to 1000MHz: **-18.4 dB** at **893.85 MHz** in the **Vertical** polarization.
Above 1 GHz: **-4.86 dB** at **4905.8 MHz** in the **Horizontal** polarization.

Test Data

Environmental Conditions

Temperature:	27°C
Relative Humidity:	56%
ATM Pressure:	1009mbar

The testing was performed by Hansen Hu on 2005-10-25.

Test Mode: Max Power

INDICATED		TABLE	ANTENNA		CORRECTION FACTOR			CORRECTED AMPLITUDE	FCC PART 18	
Frequency	Meter Reading	Angle	Height	Polar	Antenna Loss	Cable Loss	Amplifier Gain	Corr. Ampl.	Limit	Margin
MHz	dB μ V/m	Degree	Meter	H/ V	dB	dB	dB	dB μ V/m	dB μ V/m	dB
30 MHz to 1000 MHz										
893.85	54.2	60	1.0	V	22.6	3.5	28.1	52.22	70.63	-18.4
502.93	59.3	270	1.0	H	18.0	2.4	28.6	51.11	70.63	-19.5
517.24	58.7	45	1.2	H	18.0	2.4	28.6	50.53	70.63	-20.1
277.09	62.7	45	1.0	H	13.8	1.5	27.6	50.43	70.63	-20.2
912.86	45.9	90	1.2	H	22.8	3.6	27.8	44.49	70.63	-26.1
506.47	52.4	60	1.2	V	18.0	2.4	28.6	44.18	70.63	-26.5
32.63	47.6	180	1.2	V	24.1	0.6	28.8	43.41	70.63	-27.2
945.43	43.5	45	1.2	V	23.4	3.6	27.7	42.78	70.63	-27.9
339.58	53.8	60	1.2	H	14.6	1.7	27.7	42.40	70.63	-28.2
31.95	40.0	45	1.2	H	24.1	0.6	28.8	35.81	70.63	-34.8
344.38	41.1	60	1.0	V	14.9	1.8	27.7	30.14	70.63	-40.5
252.94	43.6	90	1.0	V	12.3	1.3	27.6	29.56	70.63	-41.1

INDICATED		TABLE	ANTENNA		CORRECTION FACTOR			CORRECTED AMPLITUDE	FCC PART 18		COMMENTS
Frequency MHz	Meter Reading dB μ V/m	Angle Degree	Height Meter	Polar H/V	Antenna Loss dB	Cable Loss dB	Amplifier Gain dB	Corr. Ampl. dB μ V/m	Limit dB μ V/m	Margin dB	
Above 1 GHz											
4905.8	59.77	45	1.2	H	33.8	5.2	33.00	65.77	70.63	-4.86	Harmonic
4892.7	58.24	180	1.2	V	33.8	5.2	33.00	64.24	70.63	-6.39	Harmonic
9867.2	49.92	180	1.2	H	37.6	7.3	34.50	60.32	70.63	-10.31	Harmonic
7356.4	52.33	60	1.0	H	35.8	6.1	34.11	60.12	70.63	-10.51	Harmonic
9852.1	49.35	60	1.0	V	37.6	7.3	34.50	59.75	70.63	-10.88	Harmonic
7392.1	51.62	45	1.0	V	35.8	6.1	34.11	59.41	70.63	-11.22	Harmonic
12325.1	42.73	45	1.2	H	41.2	8.3	34.58	57.65	70.63	-12.98	Harmonic
12324.7	41.56	45	1.2	V	41.2	8.3	34.58	56.48	70.63	-14.15	Harmonic
4227.5	40.05	45	1.0	H	32.0	4.9	32.66	44.29	70.63	-26.34	Spurious
8392.8	34.09	180	1.2	V	36.7	6.5	35.35	41.94	70.63	-28.69	Spurious
8454.1	32.96	60	1.0	H	36.7	6.5	35.35	40.81	70.63	-29.82	Spurious
4211.5	35.14	45	1.0	V	31.7	4.7	32.66	38.88	70.63	-31.75	Spurious
2477.2	81.25	45	1.0	V	28.1	3.7	0.00	113.05			Fundamental
2475.6	83.17	180	1.2	H	28.1	3.7	0.00	114.97			Fundamental