

## RF Exposure Report

**Report No.:** SA170526E11C

**FCC ID:** RSE-OWA0130

**Equipment Name:** Technicolor Wi-Fi Video Bridge & Extender

**Trade Name:** technicolor

**Model Number:** OWA0130

**Received Date:** June 05, 2018

**Test Date:** Aug. 15, 2018

**Issued Date:** Oct. 29, 2018

**Applicant:** Technicolor Delivery Technologies Belgium

**Address:** Prins Boudewijnlaan 47, 2650 Edegem Belgium

**Issued By:** Bureau Veritas Consumer Products Services (H.K.) Ltd., Taoyuan Branch  
Hsin Chu Laboratory

**Lab Address:** E-2, No.1, Li Hsin 1st Road, Hsinchu Science Park, Hsinchu City 300,  
Taiwan R.O.C.

**Test Location:** E-2, No.1, Li Hsin 1st Road, Hsinchu Science Park, Hsinchu City 300,  
Taiwan R.O.C.

**FCC Registration /  
Designation Number:** 723255 / TW2022

This report is for your exclusive use. Any copying or replication of this report to or for any other person or entity, or use of our name or trademark, is permitted only with our prior written permission. This report sets forth our findings solely with respect to the test samples identified herein. The results set forth in this report are not indicative or representative of the quality or characteristics of the lot from which a test sample was taken or any similar or identical product unless specifically and expressly noted. Our report includes all of the tests requested by you and the results thereof based upon the information that you provided to us. You have 60 days from date of issuance of this report to notify us of any material error or omission caused by our negligence, provided, however, that such notice shall be in writing and shall specifically address the issue you wish to raise. A failure to raise such issue within the prescribed time shall constitute your unqualified acceptance of the completeness of this report, the tests conducted and the correctness of the report contents. Unless specific mention, the uncertainty of measurement has been explicitly taken into account to declare the compliance or non-compliance to the specification. The report must not be used by the client to claim product certification, approval, or endorsement by any government agencies.

## Table of Contents

<b>Release Control Record</b> .....	<b>3</b>
<b>1 Certificate of Conformity</b> .....	<b>4</b>
<b>2 RF Exposure</b> .....	<b>5</b>
2.1 Limits For Maximum Permissible Exposure (MPE) .....	5
2.2 MPE Calculation Formula .....	5
2.3 Classification .....	5
2.4 Antenna Gain .....	6
2.5 Calculation Result of Maximum Conducted Power .....	9

### Release Control Record

Issue No.	Description	Date Issued
SA170526E11C	Original release.	Oct. 29, 2018

## 1 Certificate of Conformity

**Product:** Technicolor Wi-Fi Video Bridge & Extender

**Brand:** technicolor

**Test Model:** OWA0130

**Sample Status:** Product Unit

**Applicant:** Technicolor Delivery Technologies Belgium

**Test Date:** Aug. 15, 2018

**Standards:** FCC Part 2 (Section 2.1091)

KDB 447498 D01 General RF Exposure Guidance v06

IEEE C95.1-1992

The above equipment has been tested by **Bureau Veritas Consumer Products Services (H.K.) Ltd., Taoyuan Branch**, and found compliance with the requirement of the above standards. The test record, data evaluation & Equipment Under Test (EUT) configurations represented herein are true and accurate accounts of the measurements of the sample's EMC characteristics under the conditions specified in this report.

**Prepared by :** Wendy Wu , **Date:** Oct. 29, 2018  
Wendy Wu / Specialist

**Approved by :** May Chen , **Date:** Oct. 29, 2018  
May Chen / Manager

## 2 RF Exposure

### 2.1 Limits for Maximum Permissible Exposure (MPE)

Frequency Range (MHz)	Electric Field Strength (V/m)	Magnetic Field Strength (A/m)	Power Density (mW/cm <sup>2</sup> )	Average Time (minutes)
Limits For General Population / Uncontrolled Exposure				
300-1500	...	...	F/1500	30
1500-100,000	...	...	1.0	30

F = Frequency in MHz

### 2.2 MPE Calculation Formula

$$Pd = (Pout * G) / (4 * \pi * r^2)$$

where

Pd = power density in mW/cm<sup>2</sup>

Pout = output power to antenna in mW

G = gain of antenna in linear scale

Pi = 3.1416

R = distance between observation point and center of the radiator in cm

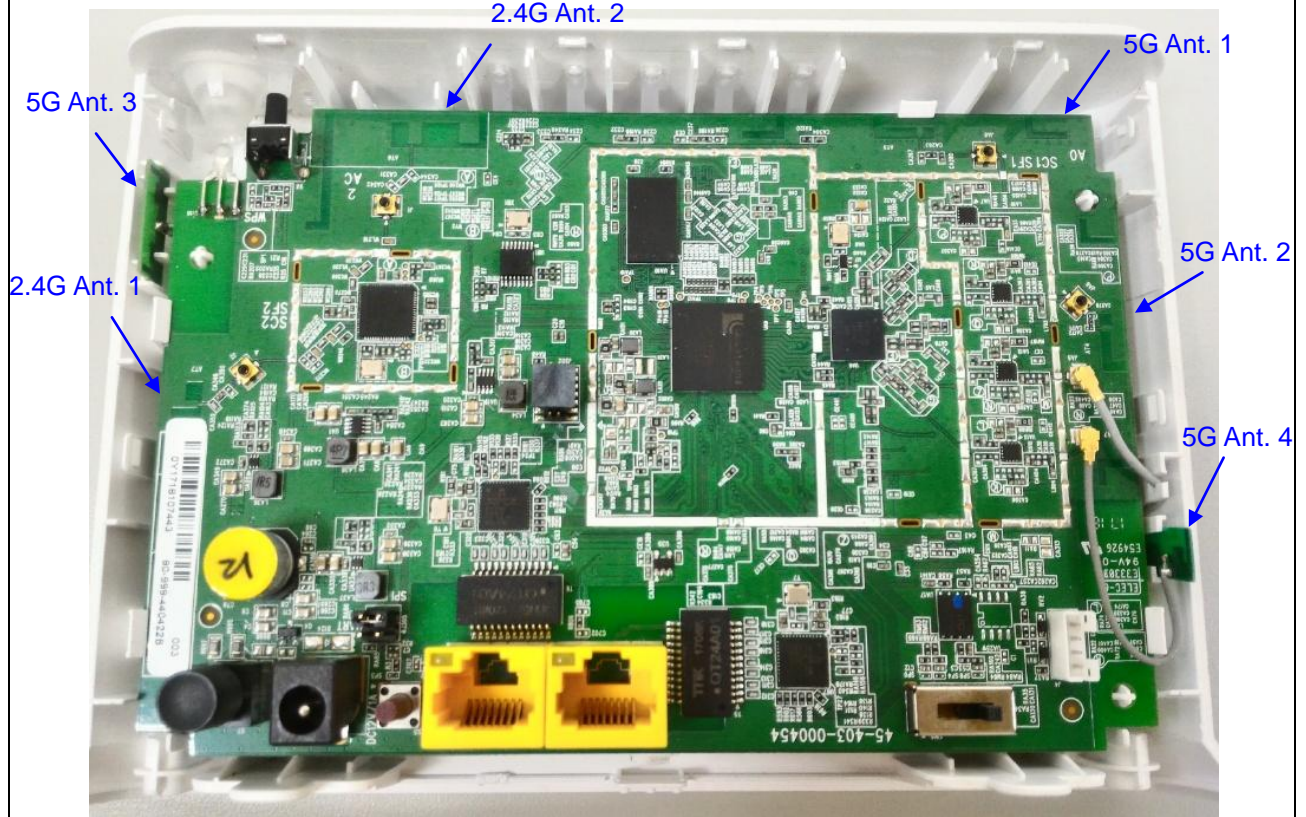
### 2.3 Classification

The antenna of this product, under normal use condition, is at least 20cm away from the body of the user.

So, this device is classified as **Mobile Device**.

## 2.4 Antenna Gain

Antenna location



**Antenna & Bandwidth for 2400~2483.5MHz**

Ant.	Brand	Model Name	Antenna Type	Connector
1	technicolor	--	Printed Antenna	Murata
2	technicolor	--	Printed Antenna	Murata

Antenna	1st (TX)		2nd (TX)	
	20 MHz	40 MHz	20 MHz	40 MHz
802.11b	V	X	X	X
802.11g	V	X	X	X
802.11n	V	V	V	V

For 2400~2483.5MHz

Frequency	Antenna Gain (dBi)			
	Ant. 1 (W1)		Ant. 2 (W2)	
	20 MHz	40 MHz	20 MHz	40 MHz
2412MHz	2.60	-	3.70	-
2422MHz	-	2.70	-	3.60
2437MHz	2.70	2.70	3.00	3.00
2452MHz	-	2.60	-	3.00
2462MHz	2.60	-	3.10	-

Frequency	Maximum Gain (dBi) for CDD mode	
	SDM mode (2 Stream 2 TX) for Power & PSD Gain (KDB 662911 Option 2)	
	20 MHz	40 MHz
2412MHz	4.78	-
2422MHz	-	4.68
2437MHz	4.63	4.63
2452MHz	-	4.73
2462MHz	4.69	-

Note:

1. Antenna Gain refer to antenna report.
2. Maximum Correlated Directional Gain =  $10 \log\left[\frac{(10^{G1/20} + 10^{G2/20} + \dots + 10^{GN/20})^2}{N_{ANT}}\right]$  dBi
3. Maximum Uncorrelated Directional Gain =  $10 \log\left[\frac{(10^{G1/10} + 10^{G2/10} + \dots + 10^{GN/10})}{N_{ANT}}\right]$  dBi

Frequency	Maximum Gain (dBi) for SDM mode	
	SDM mode (2 Stream 2 TX) for Power & PSD Gain (KDB 662911 Option 2)	
	20 MHz	40 MHz
2412MHz	2.00	-
2422MHz	-	1.89
2437MHz	1.71	1.71
2452MHz	-	1.76
2462MHz	1.72	-

Note:

1. Antenna Gain refer to antenna report.
2. Maximum Correlated Directional Gain =  $10 \log\left[\frac{(10^{G1/20} + 10^{G2/20} + \dots + 10^{GN/20})^2}{N_{ANT}}\right]$  dBi
3. Maximum Uncorrelated Directional Gain =  $10 \log\left[\frac{(10^{G1/10} + 10^{G2/10} + \dots + 10^{GN/10})}{N_{ANT}}\right]$  dBi

### Antenna & Bandwidth for 5150~5850MHz

Ant.	Brand	Model Name	Antenna Type	Connector	Cable Length
1	technicolor	--	Printed Antenna	Murata	--
2	technicolor	--	Printed Antenna	Murata	--
3	technicolor	--	Printed Antenna	I-pex	340mm
4	technicolor	--	Printed Antenna	I-pex	150mm

Antenna	1st (TX)			2nd (TX)			3rd (TX)			4th (TX)		
Bandwidth Mode	20 MHz	40 MHz	80 MHz	20 MHz	40 MHz	80 MHz	20 MHz	40 MHz	80 MHz	20 MHz	40 MHz	80 MHz
802.11a	V	X	X	V	X	X	V	X	X	V	X	X
802.11n	V	V	X	V	V	X	V	V	X	V	V	X
802.11ac	V	V	V	V	V	V	V	V	V	V	V	V

Frequency	Antenna Gain (dBi) for CDD/TxBF/SDM mode											
	1 Stream 4 TX for CDD/TxBF mode			2 Stream 4 TX for CDD/TxBF mode			3 Stream 4 TX for TxBF mode			4 Stream 4 TX for SDM mode		
	20 MHz	40 MHz	80 MHz	20 MHz	40 MHz	80 MHz	20 MHz	40 MHz	80 MHz	20 MHz	40 MHz	80 MHz
5180MHz	7.01	-	-	4.04	-	-	2.32	-	-	1.07	-	-
5190MHz	-	7.25	-	-	4.35	-	-	2.64	-	-	1.39	-
5200MHz	6.49	-	-	3.61	-	-	1.92	-	-	0.67	-	-
5210MHz	-	-	6.74	-	-	3.86	-	-	2.16	-	-	0.92
5230MHz	-	7.29	-	-	4.42	-	-	2.71	-	-	1.46	-
5240MHz	6.65	-	-	3.83	-	-	2.23	-	-	1	-	-
5260MHz	6.81	-	-	3.88	-	-	2.2	-	-	0.95	-	-
5270MHz	-	7.89	-	-	5	-	-	3.33	-	-	2.09	-
5290MHz	-	-	7.31	-	-	4.4	-	-	2.72	-	-	1.47
5300MHz	7.75	-	-	4.83	-	-	3.15	-	-	1.9	-	-
5310MHz	-	7.32	-	-	4.47	-	-	2.76	-	-	1.52	-
5320MHz	6.85	-	-	3.94	-	-	2.23	-	-	0.99	-	-
5500MHz	6.74	-	-	4.03	-	-	2.28	-	-	1.03	-	-
5510MHz	-	6.74	-	-	3.99	-	-	2.25	-	-	1.01	-
5530MHz	-	-	6.99	-	-	4.03	-	-	2.29	-	-	1.05
5550MHz	-	7.07	-	-	4.11	-	-	2.35	-	-	1.1	-
5580MHz	8.04	-	-	5.27	-	-	3.54	-	-	2.29	-	-
5670MHz	-	6.49	-	-	3.59	-	-	2.63	-	-	0.72	-
5700MHz	6.87	-	-	4.05	-	-	2.32	-	-	1.07	-	-
5745MHz	7.06	-	-	4.17	-	-	2.5	-	-	1.25	-	-
5755MHz	-	7.87	-	-	5.06	-	-	3.31	-	-	2.06	-
5775MHz	-	-	7.36	-	-	4.48	-	-	3.31	-	-	2.06
5785MHz	6.83	-	-	4.02	-	-	2.29	-	-	1.05	-	-
5795MHz	-	6.43	-	-	3.6	-	-	1.86	-	-	0.61	-
5825MHz	6.45	-	-	3.62	-	-	1.92	-	-	0.7	-	-

**Note:**

1. Antenna Gain refer to "OWA0130 with shielding antenna table\_20161012.xls" files
2. Maximum Correlated Directional Gain =  $10 \log[(10^{G1/20} + 10^{G2/20} + \dots + 10^{GN/20})^2 / N_{ANT}]$  dBi
3. Maximum Uncorrelated Directional Gain =  $10 \log[(10^{G1/10} + 10^{G2/10} + \dots + 10^{GN/10}) / N_{ANT}]$  dBi



## 2.5 Calculation Result of Maximum Conducted Power

For 2.4GHz, 5GHz (U-NII-1 & UNII-3 band) and Bluetooth data was copied from the original test report (Report No.: SA170529E11B)

### For WLAN – 2.4GHz Worst Condition: 802.11n (20MHz) 2Tx CDD

Frequency (MHz)	Conducted Power		Directional Gain (dBi)	Distance (cm)	Power Density (mW/cm <sup>2</sup> )	Limit (mW/cm <sup>2</sup> )
	(dBm)	(mW)				
2437	19.61	91.419	4.63	20	0.05282	1

Note:

1.  $P_{out} * G = \text{EIRP Power} = \text{Conducted Power (mW)} * \text{Gain (numeric)}$
2.  $\text{Gain (dBi) to Gain (numeric)} = 10^{(4.63/10)} = 2.904023$
3.  $\text{Distance (cm)} = r = \text{declare by manufacture} = 20 \text{ cm}$
4.  $P_d = (P_{out} * G) / (4 * \pi * r^2) = (91.419 * 2.904023) / (4 * 3.1416 * 20^2) = 0.05282 \text{ (mW/cm}^2\text{)}$

### For WLAN – 5GHz\_U\_NII 1 Worst Condition: 11ac (40MHz) 1S4T TxBF

Frequency (MHz)	Conducted Power		Directional Gain (dBi)	Distance (cm)	Power Density (mW/cm <sup>2</sup> )	Limit (mW/cm <sup>2</sup> )
	(dBm)	(mW)				
5230	26.40	436.251	7.29	20	0.46501	1

Note:

1.  $P_{out} * G = \text{EIRP Power} = \text{Conducted Power (mW)} * \text{Gain (numeric)}$
2.  $\text{Gain (dBi) to Gain (numeric)} = 10^{(7.29/10)} = 5.357967$
3.  $\text{Distance (cm)} = r = \text{declare by manufacture} = 20 \text{ cm}$
4.  $P_d = (P_{out} * G) / (4 * \pi * r^2) = (436.251 * 5.357967) / (4 * 3.1416 * 20^2) = 0.46501 \text{ (mW/cm}^2\text{)}$

### For WLAN – 5GHz\_U\_NII 2A Worst Condition: 11ac (40MHz) 1S4T TxBF

Frequency (MHz)	Conducted Power		Directional Gain (dBi)	Distance (cm)	Power Density (mW/cm <sup>2</sup> )	Limit (mW/cm <sup>2</sup> )
	(dBm)	(mW)				
5270	21.42	138.723	7.89	20	0.16978	1

Note:

1.  $P_{out} * G = \text{EIRP Power} = \text{Conducted Power (mW)} * \text{Gain (numeric)}$
2.  $\text{Gain (dBi) to Gain (numeric)} = 10^{(7.89/10)} = 6.151769$
3.  $\text{Distance (cm)} = r = \text{declare by manufacture} = 20 \text{ cm}$
4.  $P_d = (P_{out} * G) / (4 * \pi * r^2) = (138.723 * 6.151769) / (4 * 3.1416 * 20^2) = 0.16978 \text{ (mW/cm}^2\text{)}$

**For WLAN – 5GHz U\_NII 2C Worst Condition: 11ac (40MHz) 1S4T CDD**

Frequency (MHz)	Conducted Power		Directional Gain (dBi)	Distance (cm)	Power Density (mW/cm <sup>2</sup> )	Limit (mW/cm <sup>2</sup> )
	(dBm)	(mW)				
5670	22.63	183.417	6.49	20	0.16262	1

Note:

1.  $P_{out} * G = \text{EIRP Power} = \text{Conducted Power(mW)} * \text{Gain(numeric)}$
2.  $\text{Gain(dBi) to Gain(numeric)} = 10^{(6.49/10)} = 4.456562$
3. Distance (cm) = r = declare by manufacture = 20 cm
4.  $P_d = (P_{out} * G) / (4 * \pi * r^2) = (183.417 * 4.456562) / (4 * 3.1416 * 20^2) = 0.16262 \text{ (mW/cm}^2\text{)}$

**For WLAN – 5GHz U\_NII 3 Worst Condition: 11ac (40MHz) 1S4T TxBF**

Frequency (MHz)	Conducted Power		Directional Gain (dBi)	Distance (cm)	Power Density (mW/cm <sup>2</sup> )	Limit (mW/cm <sup>2</sup> )
	(dBm)	(mW)				
5755	26.46	442.505	7.87	20	0.53907	1

Note:

1.  $P_{out} * G = \text{EIRP Power} = \text{Conducted Power(mW)} * \text{Gain(numeric)}$
2.  $\text{Gain(dBi) to Gain(numeric)} = 10^{(7.87/10)} = 6.123504$
3. Distance (cm) = r = declare by manufacture = 20 cm
4.  $P_d = (P_{out} * G) / (4 * \pi * r^2) = (442.505 * 6.123504) / (4 * 3.1416 * 20^2) = 0.53907 \text{ (mW/cm}^2\text{)}$

**Conclusion:**

The formula of calculated the MPE is:

$$CPD1 / LPD1 + CPD2 / LPD2 + \dots \text{etc.} < 1$$

CPD = Calculation power density

LPD = Limit of power density

$$\text{WLAN 2.4GHz} + \text{WLAN 5GHz} = (0.05282 / 1) + (0.53907 / 1) = 0.59189$$

Therefore the maximum calculations of above situations are less than the “1” limit.

--- END ---