

---

# SAR Test Report

---

Report No.: AGC05323160902FH01

**FCC ID** : RS5TAURUSRX

**APPLICATION PURPOSE** : Original Equipment

**PRODUCT DESIGNATION** : BABY MONITOR

**BRAND NAME** : Timeflys, Bundle Tumble

**MODEL NAME** : Taurus RX

**CLIENT** : MC DEVICES CO., LTD.

**DATE OF ISSUE** : Oct. 14,2016

**STANDARD(S)** : IEEE Std. 1528:2013;FCC 47CFR § 2.1093;IEEE/ANSI C95.1:2005

**REPORT VERSION** : V1.0

Attestation of Global Compliance(Shenzhen) Co., Ltd.

**CAUTION:**

This report shall not be reproduced except in full without the written permission of the test laboratory and shall not be quoted out of context.



### Report Revise Record

Report Version	Revise Time	Issued Date	Valid Version	Notes
V1.0	/	Oct. 14,2016	Valid	Original Report

## Test Report Certification

Applicant Name	:	MC DEVICES CO., LTD.
Applicant Address	:	SUITE 516 BLD 4 , NATIONAL SOFTWARE BASE, KEJIZHONG 2 RD, SHENZHEN HI-TECH PARK, SHENZHEN, CHINA
Manufacturer Name	:	MC DEVICES CO., LTD.
Manufacturer Address	:	SUITE 516 BLD 4 , NATIONAL SOFTWARE BASE, KEJIZHONG 2 RD, SHENZHEN HI-TECH PARK, SHENZHEN, CHINA
Product Designation	:	BABY MONITOR
Brand Name	:	Timeflys, Bundle Tumble
Model Name	:	Taurus RX
EUT Voltage	:	DC3.6V by battery
Applicable Standard	:	IEEE Std. 1528:2013; FCC 47CFR § 2.1093; IEEE/ANSI C95.1:2005
Test Date	:	Oct. 13,2016
Performed Location		Attestation of Global Compliance(Shenzhen) Co., Ltd.
		2 F, Building 2, No.1-No.4, Chaxi Sanwei Technical Industrial Park, Gushu, Xixiang Street, Bao'an District, Shenzhen, China
Report Template		AGCRT-US-2.4G/SAR (2016-01-01)

*Thea Huang*

Tested By \_\_\_\_\_  
Thea Huang(Huang Qianqian) Oct. 14,2016

*Angela Li*

Checked By \_\_\_\_\_  
Angela Li(Li Jiao) Oct. 14,2016

*Solger Zhang*

Authorized By \_\_\_\_\_  
Solger Zhang(Zhang Hongyi) Oct. 14,2016  
Authorized Officer

### TABLE OF CONTENTS

<b>1.SUMMARY OF MAXIMUM SAR VALUE .....</b>	<b>5</b>
<b>2. GENERAL INFORMATION.....</b>	<b>6</b>
2.1. EUT DESCRIPTION.....	6
2.2. TEST PROCEDURE .....	7
2.3. TEST ENVIRONMENT .....	7
<b>3. SAR MEASUREMENT SYSTEM.....</b>	<b>8</b>
3.1. SATIMO SYSTEM DESCRIPTION .....	8
3.2. COMOSAR E-FIELD PROBE .....	9
3.3. ROBOT.....	9
3.4. VIDEO POSITIONING SYSTEM .....	10
3.5. DEVICE HOLDER .....	10
3.6. SAM TWIN PHANTOM.....	11
<b>4. SAR MEASUREMENT PROCEDURE.....</b>	<b>12</b>
4.1. SPECIFIC ABSORPTION RATE (SAR).....	12
4.2. SAR MEASUREMENT PROCEDURE .....	13
4.3. RF EXPOSURE CONDITIONS .....	15
<b>5. TISSUE SIMULATING LIQUID .....</b>	<b>16</b>
5.1. THE COMPOSITION OF THE TISSUE SIMULATING LIQUID(BY WEIGHT %) .....	16
5.2. TISSUE DIELECTRIC PARAMETERS FOR HEAD AND BODY PHANTOMS .....	16
5.3. TISSUE CALIBRATION RESULT .....	17
<b>6. SAR SYSTEM CHECK&amp;VALIDATION PROCEDURE .....</b>	<b>18</b>
6.1. SAR SYSTEM CHECK PROCEDURES .....	18
6.2. SAR SYSTEM CHECK.....	19
<b>7. EUT TEST POSITION .....</b>	<b>20</b>
7.1. BODY PART POSITION .....	20
<b>8. SAR EXPOSURE LIMITS .....</b>	<b>21</b>
<b>9. TEST EQUIPMENT LIST .....</b>	<b>22</b>
<b>10. MEASUREMENT UNCERTAINTY .....</b>	<b>23</b>
<b>11. CONDUCTED POWER MEASUREMENT.....</b>	<b>25</b>
<b>12. TEST RESULTS.....</b>	<b>26</b>
12.1. SAR TEST RESULTS SUMMARY.....	26
<b>APPENDIX A. SAR SYSTEM CHECK DATA .....</b>	<b>29</b>
<b>APPENDIX B. SAR MEASUREMENT DATA.....</b>	<b>33</b>
<b>APPENDIX C. TEST SETUP PHOTOGRAPHS &amp;EUT PHOTOGRAPHS.....</b>	<b>45</b>
<b>APPENDIX D. CALIBRATION DATA .....</b>	<b>45</b>

## 1.SUMMARY OF MAXIMUM SAR VALUE

The maximum results of Specific Absorption Rate (SAR) found during testing for EUT are as follows:

Highest Reported SAR :

Exposure Position	Frequency Band(MHz)	Highest Reported 1g-SAR(W/Kg)
Face up	2.4GHz	0.125
Body	2.4GHz	0.718

This device is compliance with Specific Absorption Rate (SAR) for general population/uncontrolled exposure limits (1.6W/Kg) specified in IEEE Std. 1528:2013;FCC 47CFR § 2.1093; IEEE/ANSI C95.1 and the following specific FCC Test Procedures:

- KDB 447498 D01 General RF Exposure Guidance v06
- KDB 865664 D01 SAR measurement 100 MHz to 6 GHz v01r04

## 2. GENERAL INFORMATION

### 2.1. EUT Description

General Information	
Product Designation	BABY MONITOR
Test Model	Taurus RX
Hardware Version	Taurus RX
Software Version	N/A
Device Category	Portable
RF Exposure Environment	Uncontrolled
Antenna Type	Internal
Duty Cycle	100%(test mode)
<b>2.4 GHz</b>	
Operation Frequency	2.405377 GHz to 2.477569GHz
Type of modulation	FHSS
Peak Power	17.257dBm
Antenna Gain	0dBi
<b>Accessories</b>	
Battery	Brand name: N/A Model No. AAA 800mAh Voltage and Capacitance:1.2V*3 800mAh
Adapter	Brand name. :HJ Model No:HJ-0501000E1-US Input: 100-240V 50/60HZ 0.2A OUTPUT: 5V/1000mA
Note: The sample used for testing is end product.	
Product	Type
	<input checked="" type="checkbox"/> Production unit <input type="checkbox"/> Identical Prototype

## 2.2. Test Procedure

1	Setup the EUT and Install the test software in PC.
2	Turn on the power of all equipment.
3	Make EUT in continuous emission test through software control.

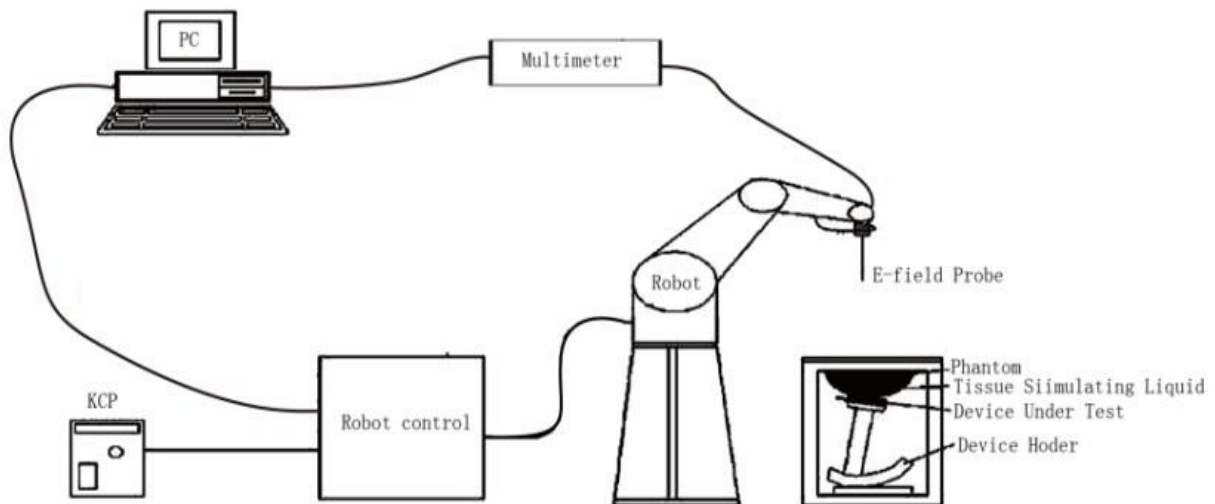
## 2.3. Test Environment

Ambient conditions in the laboratory:

Items	Required	Actual
Temperature (°C)	18-25	21± 2
Humidity (%RH)	30-70	55±2

### 3. SAR MEASUREMENT SYSTEM

#### 3.1. SATIMO System Description



The COMOSAR system for performing compliance tests consists of the following items:

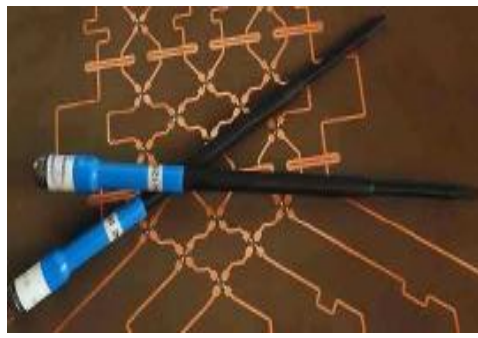
- The PC. It controls most of the bench devices and stores measurement data. A computer running WinXP and the Opensar software
- The E-Field probe. The probe is a 3-axis system made of 3 distinct dipoles. Each dipole returns a voltage in function of the ambient electric field.
- The Keithley multimeter measures each probe dipole voltages.
- The SAM phantom simulates a human head. The measurement of the electric field is made inside the phantom.
- The liquids simulate the dielectric properties of the human head tissues.
- The network emulator controls the mobile phone under test.
- The validation dipoles are used to measure a reference SAR. They are used to periodically check the bench to make sure that there is no drift of the system characteristics over time.
- The phantom, the device holder and other accessories according to the targeted measurement.



### 3.2. COMOSAR E-Field Probe

The SAR measurement is conducted with the dissymmetric probe manufactured by SATIMO. The probe is specially designed and calibrated for use in liquid with high permittivity. The dissymmetric probe has special calibration in liquid at different frequency. SATIMO conducts the probe calibration in compliance with international and national standards (e.g. IEEE 1528-2013 and relevant KDB files) Under ISO17025. The calibration data are in Appendix D.

#### Isotropic E-Field Probe Specification

Model	SSE5		
Manufacture	MVG		
Frequency	0.45GHz-3.7GHz Linearity:±0.05dB(450MHz-3.7GHz)		
Dynamic Range	0.01W/Kg-100W/Kg Linearity:±0.05dB		
Dimensions	Overall length:330mm Length of individual dipoles:4.5mm Maximum external diameter:8mm Probe Tip external diameter:5mm Distance between dipoles/ probe extremity:2.7mm		
Application	High precision dosimetric measurements in any exposure scenario (e.g., very strong gradient fields). Only probe which enables compliance testing for frequencies up to 3 GHz with precision of better 30%.		

### 3.3. Robot

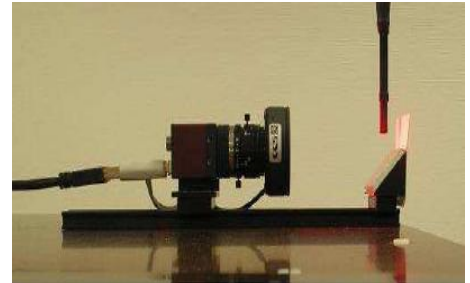
The COMOSAR system uses the KUKA robot from SATIMO SA (France). For the 6-axis controller COMOSAR system, the KUKA robot controller version from SATIMO is used. The XL robot series have many features that are important for our application:

- ☐ High precision (repeatability 0.02 mm)
- ☐ High reliability (industrial design)
- ☐ Jerk-free straight movements
- ☐ Low ELF interference (the closed metallic construction shields against motor control fields)
- ☐ 6-axis controller



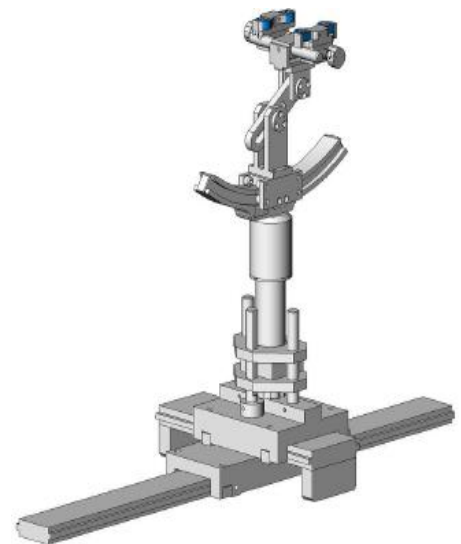
### 3.4. Video Positioning System

The video positioning system is used in OpenSAR to check the probe. Which is composed of a camera, LED, mirror and mechanical parts. The camera is piloted by the main computer with firewire link. During the process, the actual position of the probe tip with respect to the robot arm is measured, as well as the probe length and the horizontal probe offset. The software then corrects all movements, such that the robot coordinates are valid for the probe tip. The repeatability of this process is better than 0.1 mm. If a position has been taught with an aligned probe, the same position will be reached with another aligned probe within 0.1 mm, even if the other probe has different dimensions. During probe rotations, the probe tip will keep its actual position.



### 3.5. Device Holder

The COMOSAR device holder is designed to cope with different positions given in the standard. It has two scales for the device rotation (with respect to the body axis) and the device inclination (with respect to the line between the ear reference points). The rotation center for both scales is the ear reference point (EPR). Thus the device needs no repositioning when changing the angles. The COMOSAR device holder has been made out of low-loss POM material having the following dielectric parameters: relative permittivity  $\epsilon_r = 3$  and loss tangent  $\delta = 0.02$ . The amount of dielectric material has been reduced in the closest vicinity of the device, since measurements have suggested that the influence of the clamp on the test results could thus be lowered.



### 3.6. SAM Twin Phantom

The SAM twin phantom is a fiberglass shell phantom with 2mm shell thickness (except the ear region where shell thickness increases to 6mm). It has three measurement areas:

- ☐ Left head
- ☐ Right head
- ☐ Flat phantom



The bottom plate contains three pair of bolts for locking the device holder. The device holder positions are adjusted to the standard measurement positions in the three sections. A white cover is provided to tap the phantom during off-periods to prevent water evaporation and changes in the liquid parameters. On the phantom top, three reference markers are provided to identify the phantom position with respect to the robot.

## 4. SAR MEASUREMENT PROCEDURE

### 4.1. Specific Absorption Rate (SAR)

SAR is related to the rate at which energy is absorbed per unit mass in object exposed to a radio field. The SAR distribution in a biological body is complicated and is usually carried out by experimental techniques or numerical modeling. The standard recommends limits for two tiers of groups, occupational/controlled and occupational/uncontrolled, based on a person's awareness and ability to exercise control over his or her exposure. In general, occupational/controlled exposure limits are higher than the limits for general population/uncontrolled.

The SAR definition is the time derivative (rate) of the incremental energy (dW) absorbed by (dissipated in) an incremental mass (dm) contained in a volume element(dv) of given mass density (ρ). The equation description is as below:

$$SAR = \frac{d}{dt} \left( \frac{dW}{dm} \right) = \frac{d}{dt} \left( \frac{dW}{\rho dV} \right)$$

SAR is expressed in units of Watts per kilogram (W/Kg)

SAR can be obtained using either of the following equations:

$$SAR = \frac{\sigma E^2}{\rho}$$

$$SAR = c_h \left. \frac{dT}{dt} \right|_{t=0}$$

Where

SAR	is the specific absorption rate in watts per kilogram;
E	is the r.m.s. value of the electric field strength in the tissue in volts per meter;
σ	is the conductivity of the tissue in siemens per metre;
ρ	is the density of the tissue in kilograms per cubic metre;
c <sub>h</sub>	is the heat capacity of the tissue in joules per kilogram and Kelvin;

$\left. \frac{dT}{dt} \right|_{t=0}$  is the initial time derivative of temperature in the tissue in kelvins per second

## 4.2. SAR Measurement Procedure

### Step 1: Power Reference Measurement

The Power Reference Measurement and Power Drift Measurement are for monitoring the power drift of the device under test in the batch process. The minimum distance of probe sensors to surface is 2.7mm This distance cannot be smaller than the distance os sensor calibration points to probe tip as `defined in the probe properties,

### Step 2: Area Scan

The Area Scan is used as a fast scan in two dimensions to find the area of high field values, before doing a fine measurement around the hot spot. The sophisticated interpolation routines implemented in SATIMO software can find the maximum locations even in relatively coarse grids. When an Area Scan has measured all reachable points, it computes the field maximal found in the scanned area, within a range of the global maximum. The range (in db) is specified in the standards for compliance testing. For example, a 2db range is required in IEEE Standard 1528 and IEC62209 standards, whereby 3db is a requirement when compliance is assessed in accordance with the ARIB standard (Japan) If one Zoom Scan follows the Area Scan, then only the absolute maximum will be taken as reference. For cases where multiple maximum are detected, the number of Zoom Scan has to be increased accordingly.

Area Scan Parameters extracted from KDB 865664 D01 SAR Measurement 100MHz to 6GHz

	$\leq 3 \text{ GHz}$	$> 3 \text{ GHz}$
Maximum distance from closest measurement point (geometric center of probe sensors) to phantom surface	$5 \pm 1 \text{ mm}$	$\frac{1}{2} \cdot \delta \cdot \ln(2) \pm 0.5 \text{ mm}$
Maximum probe angle from probe axis to phantom surface normal at the measurement location	$30^\circ \pm 1^\circ$	$20^\circ \pm 1^\circ$
Maximum area scan spatial resolution: $\Delta x_{\text{Area}}, \Delta y_{\text{Area}}$	$\leq 2 \text{ GHz: } \leq 15 \text{ mm}$ $2 - 3 \text{ GHz: } \leq 12 \text{ mm}$	$3 - 4 \text{ GHz: } \leq 12 \text{ mm}$ $4 - 6 \text{ GHz: } \leq 10 \text{ mm}$
	When the x or y dimension of the test device, in the measurement plane orientation, is smaller than the above, the measurement resolution must be $\leq$ the corresponding x or y dimension of the test device with at least one measurement point on the test device.	

### Step 3: Zoom Scan

Zoom Scan are used to assess the peak spatial SAR value within a cubic average volume containing 1g abd 10g of simulated tissue. The Zoom Scan measures points(refer to table below) within a cube whose base faces are centered on the maxima found in a preceding area scan job within the same procedure. When the measurement is done, the Zoom Scan evaluates the averaged SAR for 1g and 10g and displays these values next to the job's label.

Zoom Scan Parameters extracted from KDB865664 d01 SAR Measurement 100MHz to 6GHz

Maximum zoom scan spatial resolution: $\Delta x_{Zoom}$ , $\Delta y_{Zoom}$			$\leq 2$ GHz: $\leq 8$ mm 2 – 3 GHz: $\leq 5$ mm*	3 – 4 GHz: $\leq 5$ mm* 4 – 6 GHz: $\leq 4$ mm*
Maximum zoom scan spatial resolution, normal to phantom surface	uniform grid: $\Delta z_{Zoom}(n)$		$\leq 5$ mm	3 – 4 GHz: $\leq 4$ mm 4 – 5 GHz: $\leq 3$ mm 5 – 6 GHz: $\leq 2$ mm
	graded grid	$\Delta z_{Zoom}(1)$ : between 1 <sup>st</sup> two points closest to phantom surface	$\leq 4$ mm	3 – 4 GHz: $\leq 3$ mm 4 – 5 GHz: $\leq 2.5$ mm 5 – 6 GHz: $\leq 2$ mm
		$\Delta z_{Zoom}(n>1)$ : between subsequent points	$\leq 1.5 \cdot \Delta z_{Zoom}(n-1)$	
Minimum zoom scan volume	x, y, z		$\geq 30$ mm	3 – 4 GHz: $\geq 28$ mm 4 – 5 GHz: $\geq 25$ mm 5 – 6 GHz: $\geq 22$ mm
Note: $\delta$ is the penetration depth of a plane-wave at normal incidence to the tissue medium; see draft standard IEEE P1528-2011 for details.				
* When zoom scan is required and the <u>reported</u> SAR from the <i>area scan based 1-g SAR estimation</i> procedures of KDB 447498 is $\leq 1.4$ W/kg, $\leq 8$ mm, $\leq 7$ mm and $\leq 5$ mm zoom scan resolution may be applied, respectively, for 2 GHz to 3 GHz, 3 GHz to 4 GHz and 4 GHz to 6 GHz.				

Step 4: Power Drift Measurement

The Power Drift Measurement measures the field at the same location as the most recent power reference measurement within the same procedure, and with the same settings. The Power Drift Measurement gives the field difference in dB from the reading conducted within the same settings. This allows a user to monitor the power drift of the device under test within a batch process. The measurement procedure is the same as Step 1.

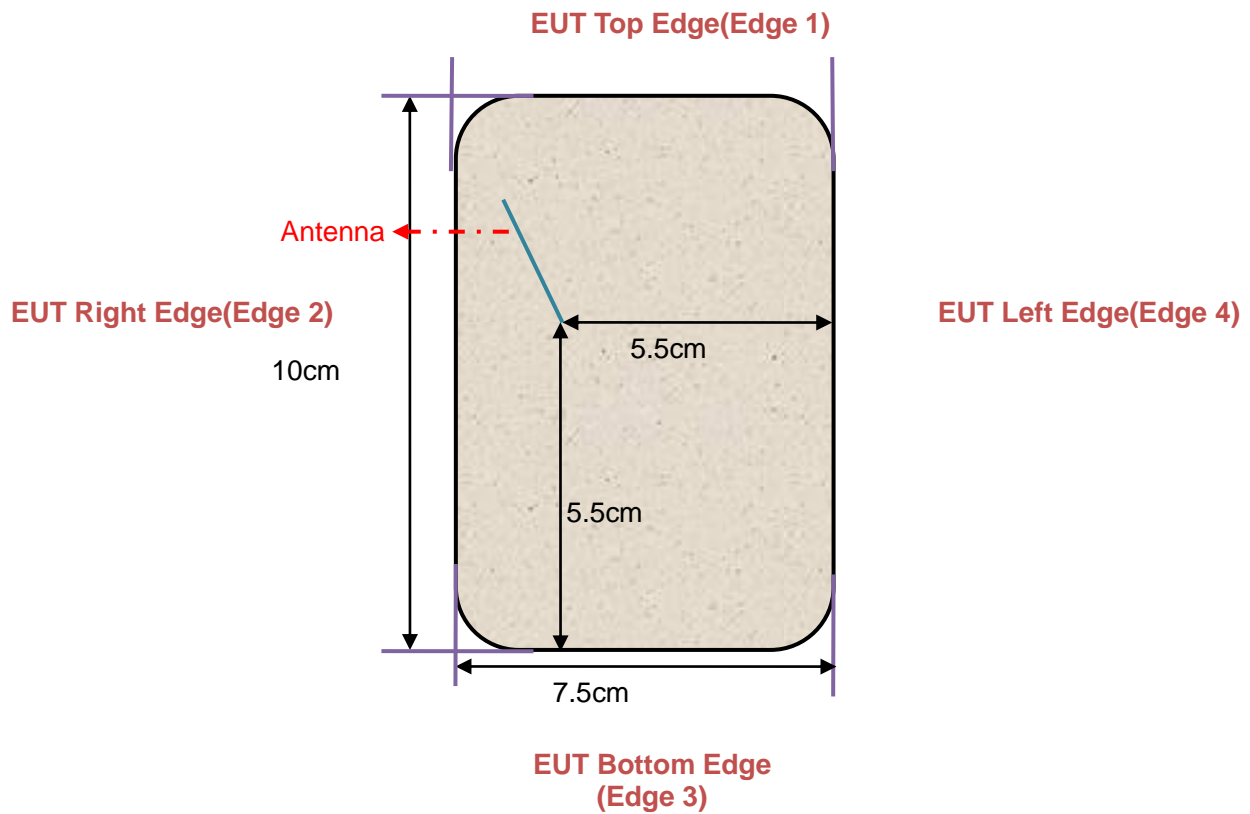
### 4.3. RF Exposure Conditions

Test Configuration and setting:

The EUT is a model of Baby monitor. For SAR testing on different channel, you need do that:

Hold the power button with power on, the EUT will be work into the engineering mode 5 seconds later. Than loosen the button and press it to choose the transmitting channel.

**Antenna Location: (back view)**



## 5. TISSUE SIMULATING LIQUID

For SAR measurement of the field distribution inside the phantom, the phantom must be filled with homogeneous tissue simulating liquid to a depth of at least 15cm. For head SAR testing the liquid height from the ear reference point (ERP) of the phantom to the liquid top surface is larger than 15cm For body SAR testing, the liquid height from the center of the flat phantom to the liquid top surface is larger than 15cm. The nominal dielectric values of the tissue simulating liquids in the phantom and the tolerance of 5% are listed in 5.2

### 5.1. The composition of the tissue simulating liquid(by weight %)

Ingredient	2450MHz	2450MHz
(Weight)	Head (100%)	Body (100%)
<b>Water</b>	50%	70%
<b>Salt</b>	1%	1%
<b>DGBE</b>	20%	9%
<b>Triton X-100</b>	29%	20%

### 5.2. Tissue Dielectric Parameters for Head and Body Phantoms

The head tissue dielectric parameters recommended by the IEEE 1528 have been incorporated in the following table. These head parameters are derived from planar layer models simulating the highest expected SAR for the dielectric properties and tissue thickness variations in a human head. Other head and body tissue parameters that have not been specified in IEEE 1528 are derived from the tissue dielectric parameters computed from the 4-Cole-Cole equations described in Reference [12] and extrapolated according to the head parameters specified in IEEE 1528.

Target Frequency (MHz)	head		body	
	$\epsilon_r$	$\sigma$ (S/m)	$\epsilon_r$	$\sigma$ (S/m)
300	45.3	0.87	58.2	0.92
450	43.5	0.87	56.7	0.94
835	41.5	0.90	55.2	0.97
900	41.5	0.97	55.0	1.05
915	41.5	1.01	55.0	1.06
1450	40.5	1.20	54.0	1.30
1610	40.3	1.29	53.8	1.40
1800–2000	40.0	1.40	53.3	1.52
<b>2450</b>	<b>39.2</b>	<b>1.80</b>	<b>52.7</b>	<b>1.95</b>
3000	38.5	2.40	52.0	2.73
5800	35.3	5.27	48.2	6.00

( $\epsilon_r$  = relative permittivity,  $\sigma$  = conductivity and  $\rho = 1000 \text{ kg/m}^3$ )



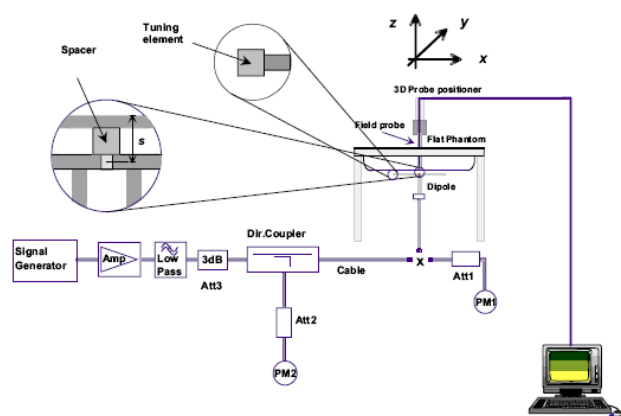
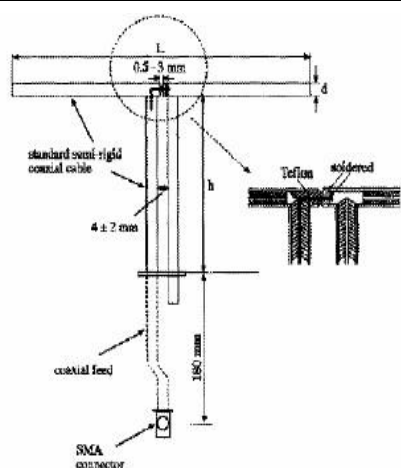
### 5.3. Tissue Calibration Result

The dielectric parameters of the liquids were verified prior to the SAR evaluation using SATIMO Dielectric Probe Kit and R&S Network Analyzer ZVL6.

Tissue Stimulant Measurement for 2450MHz					
Head	Fr. (MHz)	Dielectric Parameters ( $\pm 5\%$ )		Tissue Temp [°C]	Test time
		$\epsilon_r 39.2(37.24-41.16)$	$\delta [s/m] 1.80(1.71-1.89)$		
	2405	40.68	1.76	20.3	Oct. 13,2016
	2440	40.03	1.81		
	2450	39.51	1.85		
	2477	38.83	1.86		
Body	Fr. (MHz)	Dielectric Parameters ( $\pm 5\%$ )		Tissue Temp [°C]	Test time
		$\epsilon_r 52.7(50.065-55.335)$	$\delta [s/m] 1.95(1.8525-2.0475)$		
	2405	54.96	1.88	20.5	Oct. 13,2016
	2440	54.11	1.90		
	2450	53.66	1.93		
	2477	52.89	1.97		

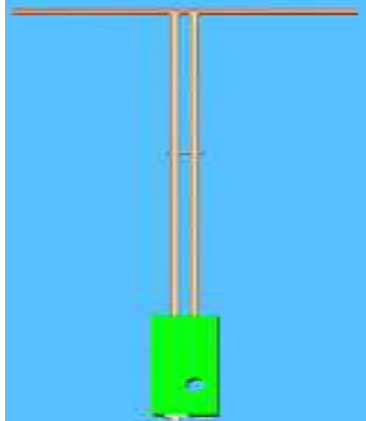
## 6.1. SAR System Check Procedures

Each SATIMO system is equipped with one or more system check kits. These units, together with the predefined measurement procedures within the SATIMO software, enable the user to conduct the system check and system validation. System kit includes a dipole, and dipole device holder.



## 6.2. SAR System Check

### 6.2.1. Dipoles

	<p>The dipoles used is based on the IEEE-1528 standard, and is complied with mechanical and electrical specifications in line with the requirements of IEEE. the table below provides details for the mechanical and electrical Specifications for the dipoles.</p>
---	---

Frequency	L (mm)	h (mm)	d (mm)
2450MHz	51.5	30.4	3.6

### 6.2.2. System Check Result

System Performance Check at 2450MHz										
Validation Kit: SN 46/11 DIP 2G450-189										
Freq. [MHz]	Target Value(W/Kg)		Reference Result (± 10%)		Tested SAR Value(W/Kg) Input Power=18dBm		Normalized to 1 W (W/Kg)		Tissue Temp. [°C]	Test time
	1g	10g	1g	10g	1g	10g	1g	10g		
2450 Head	54.40	23.75	48.96-59.84	21.375-26.125	3.094	1.474	49.036	23.355	20.3	Oct. 13,2016
2450 Body	54.19	24.96	48.771-59.609	22.464-27.456	3.108	1.480	49.266	23.455	20.5	Oct. 13,2016

Note:

(1) We use a CW signal of 18dBm for system check, and then all SAR value are normalized to 1W forward power. The result must be within ±10% of target value.

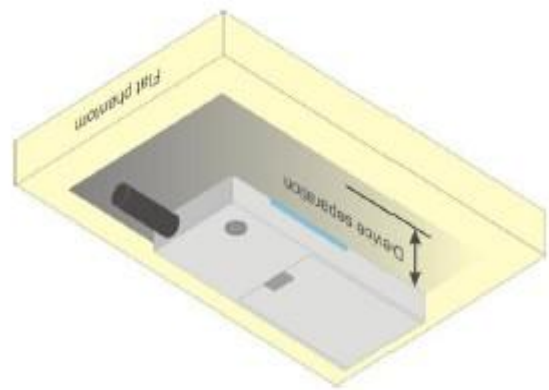
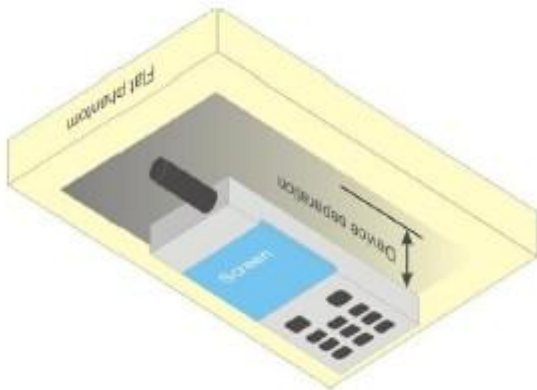
(2) Tested normalized SAR (W/kg) = Tested SAR (W/kg) × [1000/ 10<sup>1.8</sup>]

## 7. EUT TEST POSITION

This EUT was tested in **Body back, Body front, Body top, Body bottom, Body right, Body left, Face up.**

### 7.1. Body Part Position

- (1) To position the EUT parallel to the phantom surface.
- (2) To adjust the EUT parallel to the flat phantom.
- (3) To adjust the distance between the EUT surface and the flat phantom to 0mm for Body back, Body front, Body top, Body bottom, Body right, Body left, and 25mm for face up.



## 8. SAR EXPOSURE LIMITS

SAR assessments have been made in line with the requirements of IEEE-1528, and comply with ANSI/IEEE C95.1-2005 “Uncontrolled Environments” limits. These limits apply to a location which is deemed as “Uncontrolled Environment” which can be described as a situation where the general public may be exposed to an RF source with no prior knowledge or control over their exposure.

### Limits for General Population/Uncontrolled Exposure (W/kg)

Type Exposure	Uncontrolled Environment Limit (W/kg)
Spatial Peak SAR (1g cube tissue for brain or body)	1.60
Spatial Average SAR (Whole body)	0.08
Spatial Peak SAR (Limbs)	4.0

## 9. TEST EQUIPMENT LIST

Equipment description	Manufacturer/ Model	Identification No.	Current calibration date	Next calibration date
SAR Probe	MVG	SN 22/12 EP159	12/09/2015	12/08/2016
TISSUE Probe	SATIMO	SN 45/11 OCPG45	12/02/2015	12/01/2016
Phantom	SATIMO	SN_4511_SAM90	Validated. No cal required.	Validated. No cal required.
Liquid	SATIMO	-	Validated. No cal required.	Validated. No cal required.
Dipole	SATIMO SID2450	SN46/11 DIP 2G450-189	11/14/2013	11/13/2016
Signal Generator	Agilent-E4438C	US41461365	02/29/2016	02/28/2017
Vector Analyzer	Agilent / E4440A	US40420298	07/02/2016	07/01/2017
Network Analyzer	Rhode & Schwarz ZVL6	SN100132	03/01/2016	02/28/2017
Attenuator	Warison /WATT-6SR1211	N/A	N/A	N/A
Attenuator	Mini-circuits / VAT-10+	N/A	N/A	N/A
Amplifier	EM30180	SN060552	03/04/2016	03/03/2017
Directional Couple	Werlatone/ C6026-10	SN99482	07/02/2016	07/01/2017
Power Sensor	NRP-Z21	1137.6000.02	10/20/2015	10/19/2016
Power Sensor	NRP-Z23	US38261498	03/01/2016	02/28/2017
Power Viewer	R&S	V2.3.1.0	N/A	N/A

Note: Per KDB 865664 Dipole SAR Validation, AGC Lab has adopted 3 years calibration intervals. On annual basis, every measurement dipole has been evaluated and is in compliance with the following criteria:

1. There is no physical damage on the dipole;
2. System validation with specific dipole is within 10% of calibrated value;
3. Return-loss is within 20% of calibrated measurement;
4. Impedance is within 5Ω of calibrated measurement.

## 10. MEASUREMENT UNCERTAINTY

SATIMO Uncertainty									
Measurement uncertainty for 450 MHz to 3.7 GHz averaged over 1 gram / 10 gram.									
Uncertainty Component	Sec.	Tol (+- %)	Prob. Dist.	Div.	Ci (1g)	Ci (10g)	1g Ui (+-%)	10g Ui (+-%)	Vi
<b>Measurement System</b>									
Probe calibration	E.2.1	5.831	N	1	1	1	5.83	5.83	$\infty$
Axial Isotropy	E.2.2	2.5	R	$\sqrt{3}$	1	1	1.44	1.44	$\infty$
Hemispherical Isotropy	E.2.2	4.0	R	$\sqrt{3}$	1	1	2.31	2.31	$\infty$
Boundary effect	E.2.3	1.0	R	$\sqrt{3}$	1	1	0.58	0.58	$\infty$
Linearity	E.2.4	1.13	R	$\sqrt{3}$	1	1	0.65	0.65	$\infty$
System detection limits	E.2.5	1.0	R	$\sqrt{3}$	1	1	0.58	0.58	$\infty$
Readout Electronics	E.2.6	0.02	N	1	1	1	0.02	0.02	$\infty$
Response Time	E.2.7	3.0	R	$\sqrt{3}$	1	1	1.73	1.73	$\infty$
Integration Time	E.2.8	2.0	R	$\sqrt{3}$	1	1	1.15	1.15	$\infty$
RF ambient Conditions	E.6.1	3.0	R	$\sqrt{3}$	1	1	1.73	1.73	$\infty$
Probe positioner Mechanical Tolerance	E.6.2	2.0	R	$\sqrt{3}$	1	1	1.15	1.15	$\infty$
Probe positioning with respect to Phantom Shell	E.6.3	0.05	R	$\sqrt{3}$	1	1	0.03	0.03	$\infty$
Extrapolation, interpolation and integration Algorithms for Max. SAR Evaluation	E.5.2	5.0	R	$\sqrt{3}$	1	1	2.89	2.89	$\infty$
<b>Test sample Related</b>									
Test sample positioning	E.4.2.1	0.03	N	1	1	1	0.03	0.03	N-1
Device Holder Uncertainty	E.4.1.1	5.00	N	1	1	1	5.00	5.00	$\infty$
Output power Variation - SAR drift measurement	6.6.2	0.65	R	$\sqrt{3}$	1	1	0.38	0.38	$\infty$
<b>Phantom and Tissue Parameters</b>									
Phantom Uncertainty (Shape and thickness tolerances)	E.3.1	0.05	R	$\sqrt{3}$	1	1	0.03	0.03	$\infty$
Liquid conductivity deviation from target value	E.3.2	5.00	R	$\sqrt{3}$	0.64	0.43	1.85	1.24	$\infty$
Liquid conductivity - measurement uncertainty	E.3.3	5.00	N	1	0.64	0.43	3.20	2.15	$\infty$
Liquid permittivity - deviation from target value	E.3.2	0.03	R	$\sqrt{3}$	0.6	0.49	0.01	0.01	$\infty$
Liquid permittivity - measurement uncertainty	E.3.3	10.00	N	1	0.6	0.49	6.00	4.90	M
Combined Standard Uncertainty			RSS				10.27	9.68	$\infty$
Expanded Uncertainty (95% Confidence interval)			k				20.53	19.37	

SATIMO Uncertainty									
System uncertainty for 450 MHz to 3.7 GHz averaged over 1 gram / 10 gram.									
Uncertainty Component	Sec.	Tol (+- %)	Prob. Dist.	Div.	Ci (1g)	Ci (10g)	1g Ui (+-%)	10g Ui (+-%)	Vi
<b>Measurement System</b>									
Probe calibration	E.2.1	5.831	N	1	1	1	5.83	5.83	$\infty$
Axial Isotropy	E.2.2	2.5	R	$\sqrt{3}$	1	1	1.44	1.44	$\infty$
Hemispherical Isotropy	E.2.2	4.0	R	$\sqrt{3}$	1	1	2.31	2.31	$\infty$
Boundary Effects	E.2.3	1.0	R	$\sqrt{3}$	1	1	0.58	0.58	$\infty$
Linearity	E.2.4	1.13	R	$\sqrt{3}$	1	1	0.65	0.65	$\infty$
System detection limits	E.2.5	1.0	R	$\sqrt{3}$	1	1	0.58	0.58	$\infty$
Readout Electronics	E.2.6	0.02	N	1	1	1	0.02	0.02	$\infty$
Response Time	E.2.7	3.0	R	$\sqrt{3}$	1	1	1.73	1.73	$\infty$
Integration Time	E.2.8	2.0	R	$\sqrt{3}$	1	1	1.15	1.15	$\infty$
RF ambient Conditions	E.6.1	3.0	R	$\sqrt{3}$	1	1	1.73	1.73	$\infty$
Probe positioner Mechanical Tolerance	E.6.2	2.0	R	$\sqrt{3}$	1	1	1.15	1.15	$\infty$
Probe positioning with respect to Phantom Shell	E.6.3	0.05	R	$\sqrt{3}$	1	1	0.03	0.03	$\infty$
Extrapolation, interpolation and integration Algorithms for Max. SAR Evaluation	E.5.2	5.0	R	$\sqrt{3}$	1	1	2.89	2.89	$\infty$
<b>Dipole</b>									
Dipole axis to liquid Distance	8,E.4.2	1.00	N	$\sqrt{3}$	1	1	0.58	0.58	N-1
Input power and SAR drift measurement	8,6.6.2	0.65	R	$\sqrt{3}$	1	1	0.38	0.38	$\infty$
<b>Phantom and Tissue Parameters</b>									
Phantom Uncertainty (Shape and thickness tolerances)	E.3.1	0.05	R	$\sqrt{3}$	1	1	0.03	0.03	$\infty$
Liquid conductivity - deviation from target value	E.3.2	5.00	R	$\sqrt{3}$	0.64	0.43	1.85	1.24	$\infty$
Liquid conductivity - measurement uncertainty	E.3.3	5.00	N	1	0.64	0.43	3.20	2.15	$\infty$
Liquid permittivity - deviation from target value	E.3.2	0.03	R	$\sqrt{3}$	0.6	0.49	0.01	0.01	$\infty$
Liquid permittivity - measurement uncertainty	E.3.3	10.00	N	1	0.6	0.49	6.00	4.90	M
Combined Standard Uncertainty			RSS				8.99	8.31	
Expanded Uncertainty (95% Confidence interval)			k				17.97	16.62	



## 11. CONDUCTED POWER MEASUREMENT

### 2.4GHz

Mode	Channel	Frequency (MHz)	Maximum Peak Power (dBm)
GFSK Modulation	CH1	2405.377	16.447
	CH18	2440.705	<b>17.257</b>
	CH36	2477.569	17.236

## 12. TEST RESULTS

### 12.1. SAR Test Results Summary

#### 12.1.1. Test position and configuration

Body SAR was performed with the device 0mm from the phantom and face up was performed with the device 25mm from the phantom.

#### 12.1.2. Operation Mode

1. Per KDB 447498 D01 v06 ,for each exposure position, if the highest 1-g SAR is  $\leq 0.8$  W/kg, testing for low and high channel is optional.
2. Per KDB 865664 D01 v01r04,for each frequency band, if the measured SAR is  $\geq 0.8$ W/Kg, testing for repeated SAR measurement is required , that the highest measured SAR is only to be tested. When the SAR results are near the limit, the following procedures are required for each device to verify these types of SAR measurement related variation concerns by repeating the highest measured SAR configuration in each frequency band.
  - (1) When the original highest measured SAR is  $\geq 0.8$ W/Kg, repeat that measurement once.
  - (2) Perform a second repeated measurement only if the ratio of largest to smallest SAR for the original and first repeated measurements is  $> 1.20$  or when the original or repeated measurement is  $\geq 1.45$  W/Kg.
  - (3) Perform a third repeated measurement only if the original, first and second repeated measurement is  $\geq 1.5$  W/Kg and ratio of largest to smallest SAR for the original, first and second measurement is  $\geq 1.20$ .
3. Maximum Scaling SAR in order to calculate the Maximum SAR values to test under the standard Peak Power, Calculation method is as follows:  
Maximum Scaling SAR =tested SAR (Max.)  $\times$  [maximum turn-up power (mw)/ maximum measurement output power(mw) ]

### 12.1.3. Test Result

SAR MEASUREMENT									
Depth of Liquid (cm):>15					Relative Humidity (%): 56.4				
Product: BABY MONITOR									
Test Model: Taurus RX									
Position	Mode	Ch.	Fr. (MHz)	Power Drift (<±5%)	SAR (1g) (W/kg)	Max. Tune -up Power (dBm)	Meas. output Power (dBm)	Scaled SAR (W/Kg)	Limit W/kg
Face Up	FHSS	CH18	2440.705	0.32	0.105	18	17.257	0.125	1.6
Body Back With Belt Clip	FHSS	CH18	2440.705	-1.00	0.249	18	17.257	0.295	1.6
Body Back	FHSS	CH18	2440.705	0.02	0.573	18	17.257	0.680	1.6
Body Front	FHSS	CH18	2440.705	-0.36	0.386	18	17.257	0.458	1.6
Edge 1(Top)	FHSS	CH18	2440.705	0.32	0.349	18	17.257	0.414	1.6
Edge 2(Right)	FHSS	CH18	2440.705	-1.25	0.605	18	17.257	0.718	1.6

#### Note

(1) When the 1-g Reported SAR is  $\leq 0.8$  W/kg, testing for low and high channel is optional. Refer to KDB 447498.

### SAR Test Exclusion Consideration for Adjacent Edges

Per KDB 447498 D01 cl. 4.3.1:

a) For 100 MHz to 6 GHz and *test separation distances*  $\leq 50$  mm, the 1-g and 10-g SAR test exclusion thresholds are determined by the following:

$$[(\text{max. power of channel, including tune-up tolerance, mW}) / (\text{min. test separation distance, mm})] \cdot [\sqrt{f(\text{GHz})}] \leq 3.0$$

b) For 100 MHz to 6 GHz and *test separation distances*  $> 50$  mm, the 1-g and 10-g SAR test exclusion thresholds are determined by the following:

1) {[Power allowed at *numeric threshold* for 50 mm in step a)] + [(test separation distance – 50 mm)·(f(MHz)/150)]} mW, for 100 MHz to 1500 MHz

2) {[Power allowed at *numeric threshold* for 50 mm in step a)] + [(test separation distance – 50 mm)·10]} mW, for  $> 1500$  MHz and  $\leq 6$  GHz

#### Edge 4(Left)

SAR test exclusion threshold

$$\begin{aligned} &= (\text{Power allowed at numeric threshold for 50 mm in step 1}) + (\text{test separation distance} - 50 \text{ mm}) \times 10 \text{ mW} \\ &= 95.411 + (55-50) \times 10 \text{ mW} \\ &= 145.411 \text{ mW.} \end{aligned}$$

#### Edge 3(Bottom)

SAR test exclusion threshold

$$\begin{aligned} &= (\text{Power allowed at numeric threshold for 50 mm in step 1}) + (\text{test separation distance} - 50 \text{ mm}) \times 10 \text{ mW} \\ &= 95.411 + (55-50) \times 10 \text{ mW} \\ &= 145.411 \text{ mW.} \end{aligned}$$

Since the max. tune-up power is 63mW (or 18 dBm) which is lower than the SAR test exclusion threshold for the left and the bottom edges, SAR test for the left and the bottom edges can be excluded.

## APPENDIX A. SAR SYSTEM CHECK DATA

Test Laboratory: AGC Lab

Date: Oct. 13,2016

System Check Head 2450 MHz

DUT: Dipole 2450 MHz Type: SID 2450

Communication System CW; Communication System Band: D2450 (2450.0 MHz); Duty Cycle: 1:1; Conv.F=5.94

Frequency: 2450 MHz; Medium parameters used:  $f = 2450$  MHz;  $\sigma = 1.85$  mho/m;  $\epsilon_r = 39.51$ ;  $\rho = 1000$  kg/m<sup>3</sup> ;

Phantom section: Flat Section; Input Power=18dBm

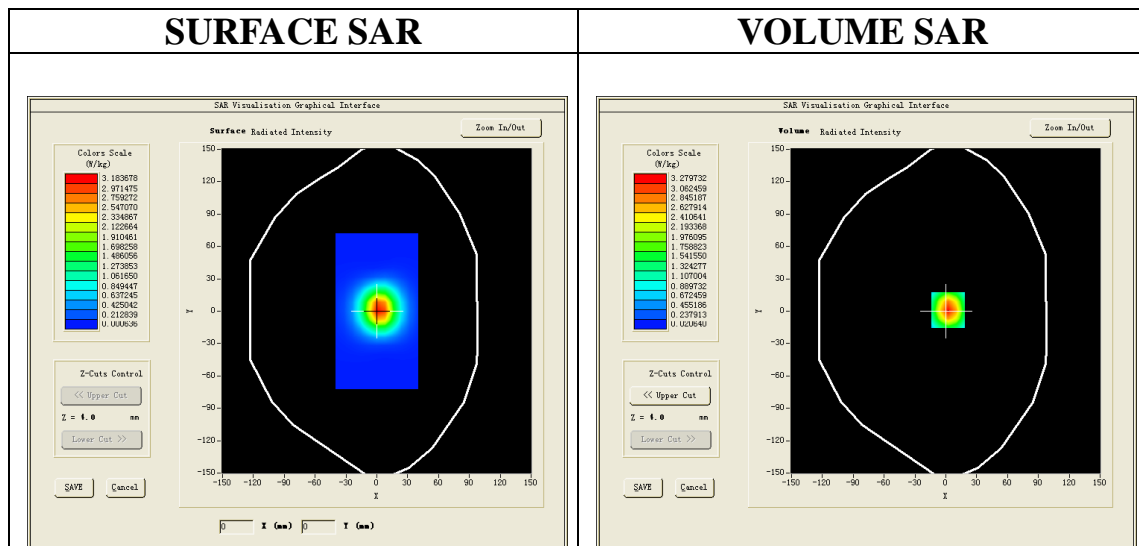
Ambient temperature (°C):21.0, Liquid temperature (°C): 20.3

SATIMO Configuration

- Probe: SSE5; Calibrated: 12/09/2015; Serial No.: SN 22/12 EP159
- Sensor-Surface: 4mm (Mechanical Surface Detection)
- Phantom: SAM twin phantom
- Measurement SW: OpenSAR V4\_02\_32

Configuration/System Check 2450MHz Head/Area Scan: Measurement grid: dx=8mm, dy=8mm

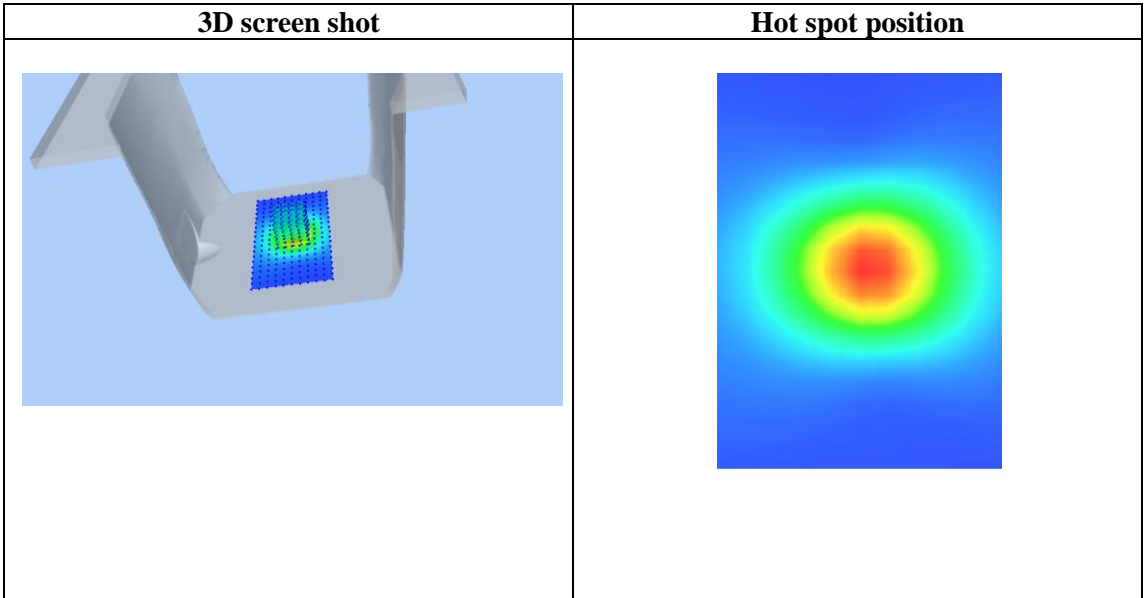
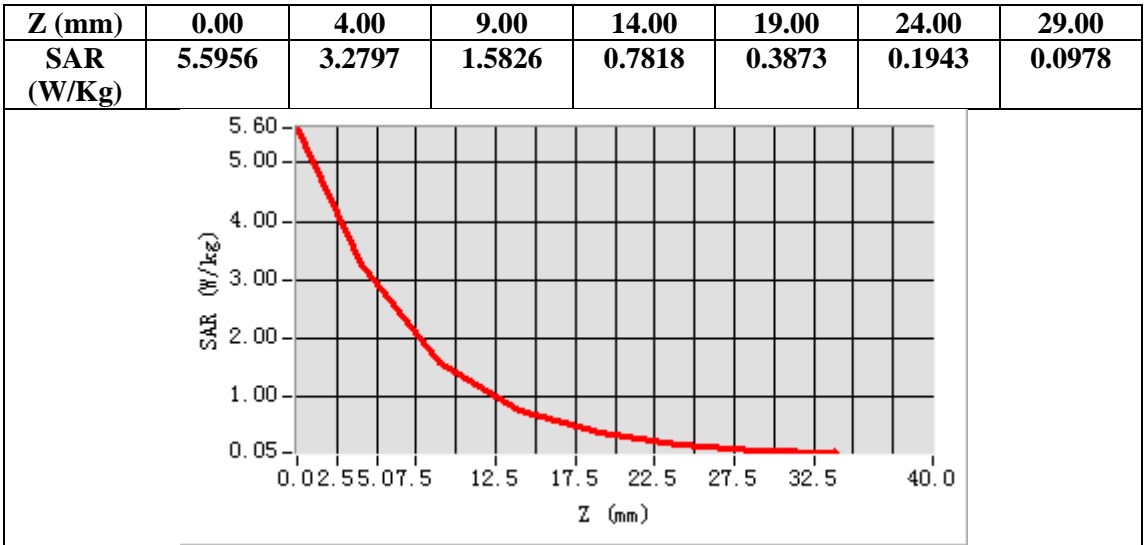
Configuration/System Check 2450MHz Head/Zoom Scan: Measurement grid: dx=5mm,dy=5mm, dz=5mm



Maximum location: X=2.00, Y=1.00

SAR Peak: 5.55 W/kg

SAR 10g (W/Kg)	1.473616
SAR 1g (W/Kg)	3.093963



**Test Laboratory: AGC Lab**  
**System Check Body 2450 MHz**

**Date: Oct. 13,2016**

**DUT: Dipole 2450 MHz Type: SID 2450**

Communication System CW; Communication System Band: D2450 (2450.0 MHz); Duty Cycle:1:1; Conv.F=6.06  
Frequency: 2450 MHz; Medium parameters used:  $f = 2450$  MHz;  $\sigma = 1.93$  mho/m;  $\epsilon_r = 53.66$ ;  $\rho = 1000$  kg/m<sup>3</sup> ;  
Phantom section: Flat Section; Input Power=18dBm  
Ambient temperature (°C): 21.0, Liquid temperature (°C): 20.5

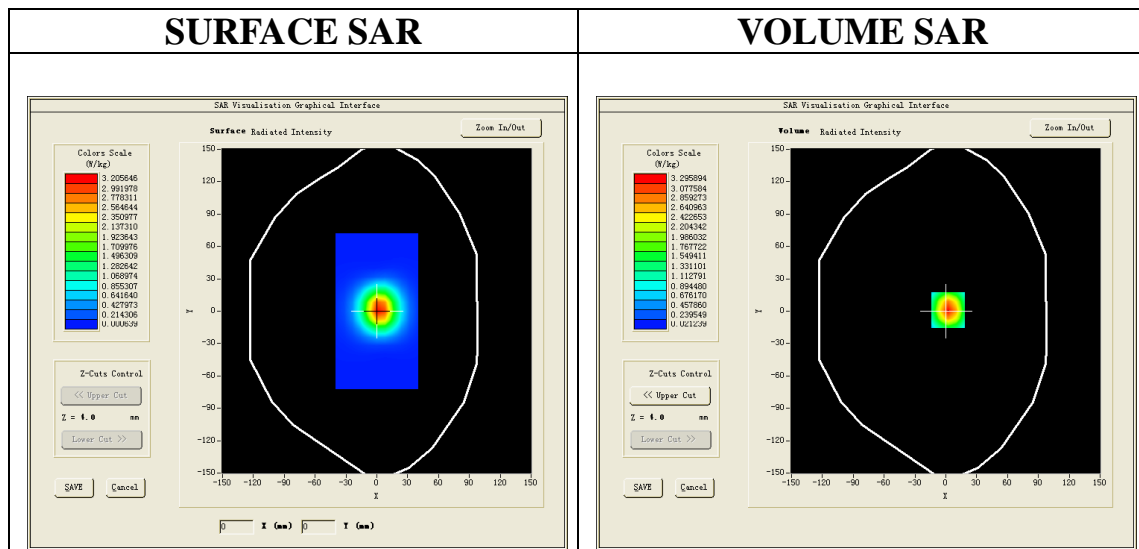
SATIMO Configuration

Probe: SSE5; Calibrated: 12/09/2015; Serial No.: SN 22/12 EP159

- Sensor-Surface: 4mm (Mechanical Surface Detection)
- Phantom: SAM twin phantom
- Measurement SW: OpenSAR V4\_02\_32

**Configuration/System Check 2450MHz Body/Area Scan:** Measurement grid: dx=8mm, dy=8mm

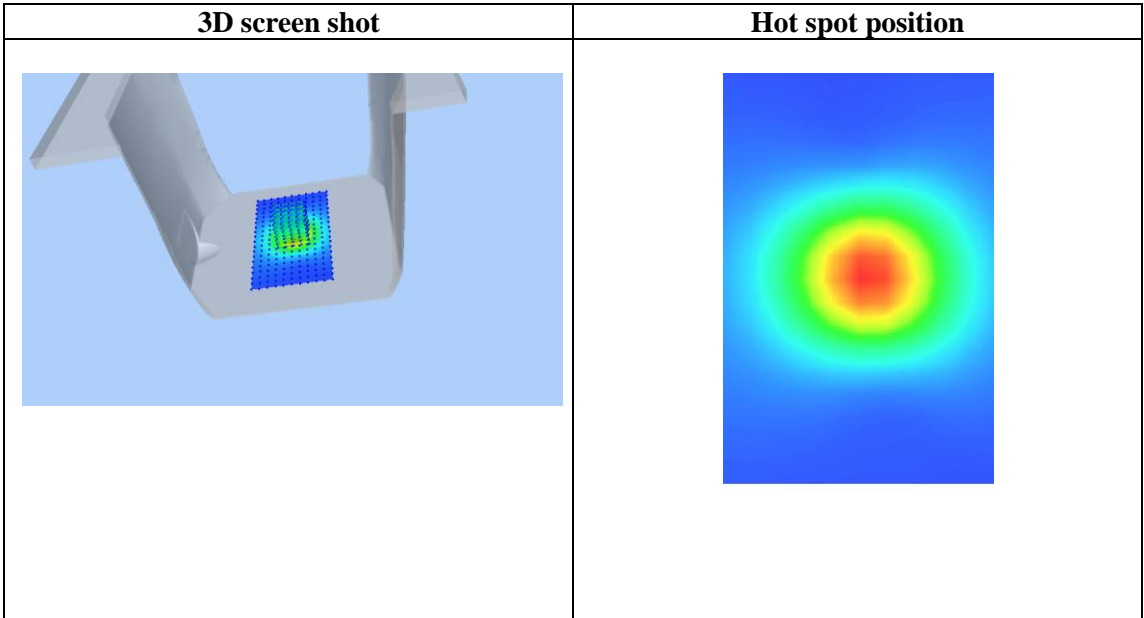
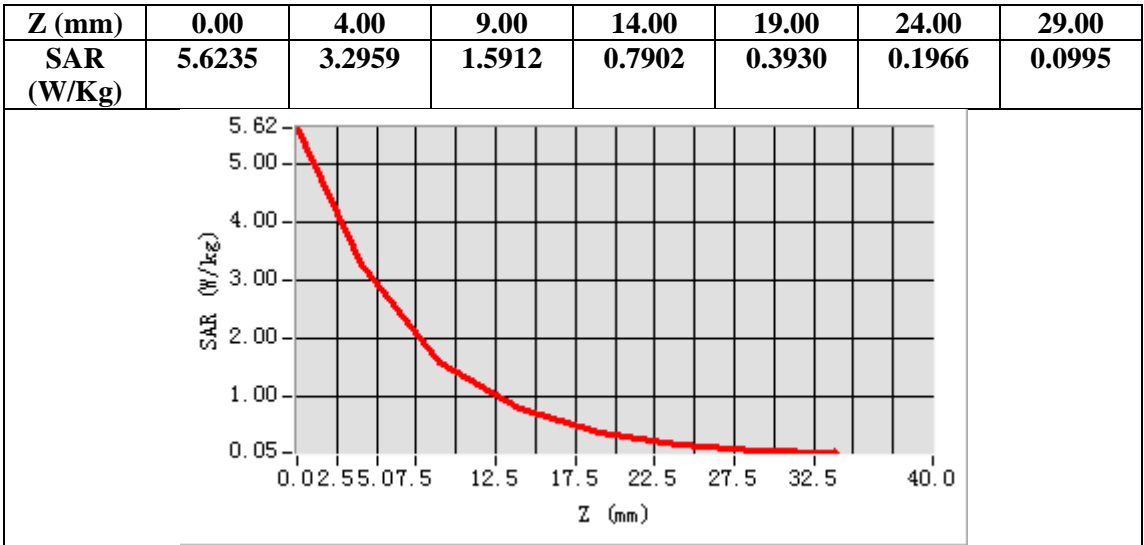
**Configuration/System Check 2450MHz Body/Zoom Scan:** Measurement grid: dx=5mm,dy=5mm, dz=5mm



**Maximum location: X=2.00, Y=1.00**

**SAR Peak: 5.58 W/kg**

<b>SAR 10g (W/Kg)</b>	1.479885
<b>SAR 1g (W/Kg)</b>	3.108451





## APPENDIX B. SAR MEASUREMENT DATA

Test Laboratory: AGC Lab

Date: Oct. 13,2016

2.4G Mid-Face up

DUT: BABY MONITOR; Type: Taurus RX

Communication System: 2.4G; Communication System Band: 2.4G; Duty Cycle:100%; Conv.F=5.94;

Frequency: 2440.705 MHz; Medium parameters used:  $f = 2450$  MHz;  $\sigma = 1.81$  mho/m;  $\epsilon_r = 40.03$ ;  $\rho = 1000$  kg/m<sup>3</sup> ;

Phantom section: Flat Section

Ambient temperature (°C): 21.0, Liquid temperature (°C): 20.3

SATIMO Configuration:

•Probe: SSE5; Calibrated: 12/09/2015; Serial No.: SN 22/12 EP159

• Sensor-Surface: 4mm (Mechanical Surface Detection)

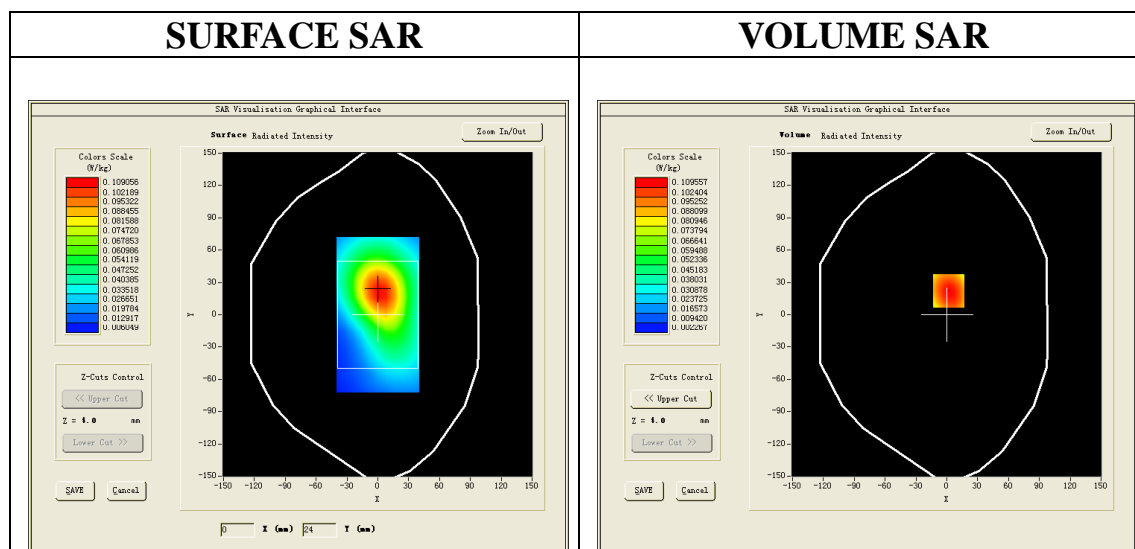
• Phantom: SAM twin phantom

• Measurement SW: OpenSAR V4\_02\_32

Configuration/2.4G Mid-Face up /Area Scan: Measurement grid: dx=8mm, dy=8mm

Configuration/2.4G Mid-Face up /Zoom Scan: Measurement grid: dx=5mm,dy=5mm, dz=5mm;

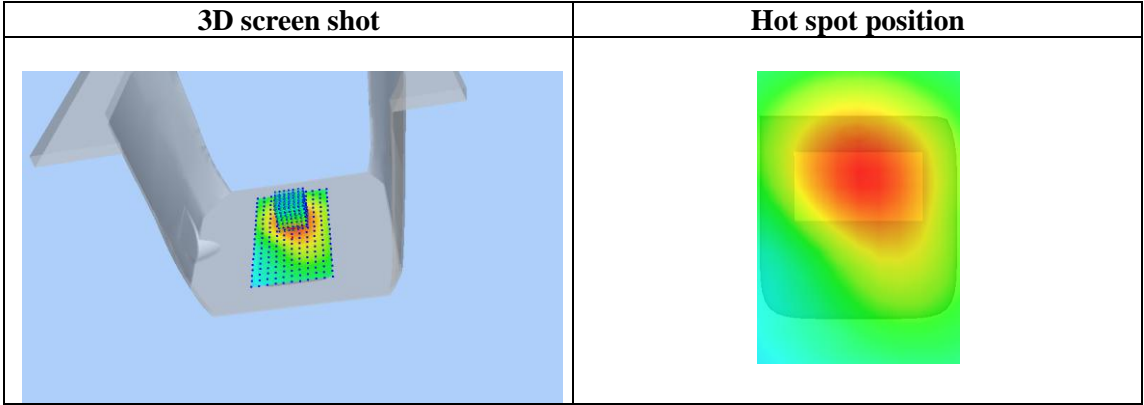
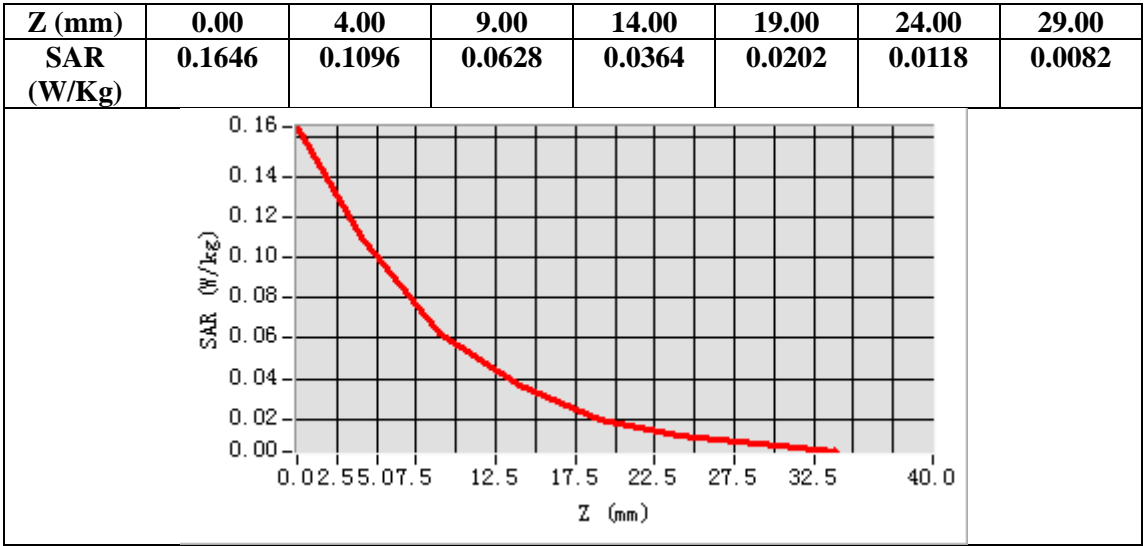
Area Scan	sam_direct_droit2_surf8mm.txt
ZoomScan	7x7x7,dx=5mm dy=5mm dz=5mm
Phantom	Validation plane
Device Position	Face Up
Band	2450MHz
Channels	Middle
Signal	Crest factor: 1.0



Maximum location: X=2.00, Y=22.00

SAR Peak: 0.17 W/kg

SAR 10g (W/Kg)	0.061579
SAR 1g (W/Kg)	0.104790



Test Laboratory: AGC Lab

Date: Oct. 13,2016

2.4G Mid-Body-Worn- Back With Belt Clip

DUT: BABY MONITOR; Type: Taurus RX

Communication System: 2.4G; Communication System Band: 2.4G; Duty Cycle:100%; Conv.F=6.06;

Frequency: 2440.705 MHz; Medium parameters used:  $f = 2450$  MHz;  $\sigma = 1.90$  mho/m;  $\epsilon_r = 54.11$ ;  $\rho = 1000$  kg/m<sup>3</sup> ;

Phantom section: Flat Section

Ambient temperature (°C): 21.0, Liquid temperature (°C): 20.5

SATIMO Configuration:

•Probe: SSE5; Calibrated: 12/09/2015; Serial No.: SN 22/12 EP159

• Sensor-Surface: 4mm (Mechanical Surface Detection)

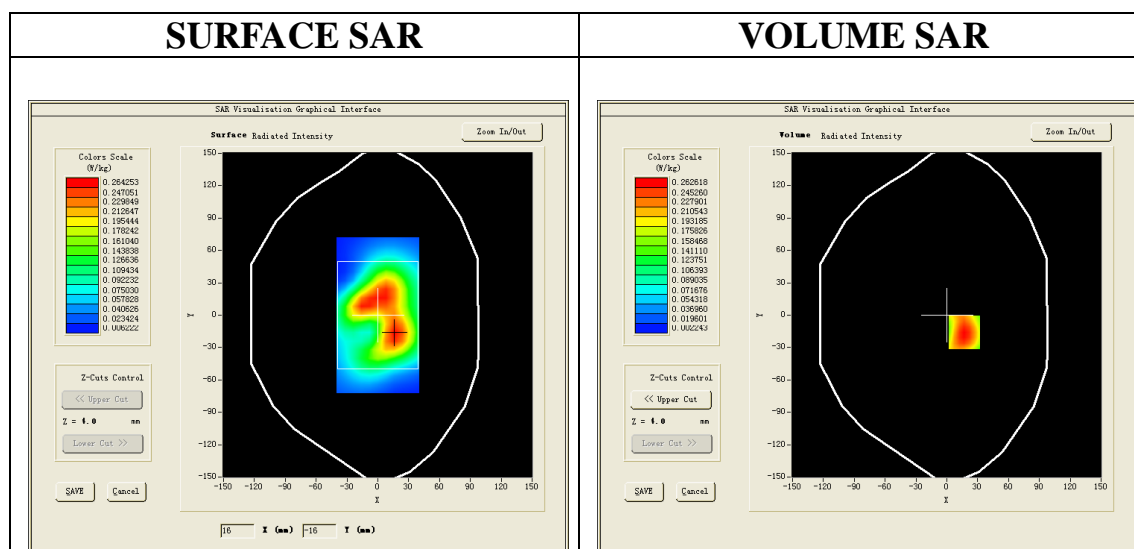
• Phantom: SAM twin phantom

• Measurement SW: OpenSAR V4\_02\_32

Configuration/2.4G Mid-Body-Worn- Back With Belt Clip /Area Scan: Measurement grid: dx=8mm, dy=8mm

Configuration/2.4G Mid-Body-Worn- Back With Belt Clip /Zoom Scan: Measurement grid: dx=5mm,dy=5mm, dz=5mm;

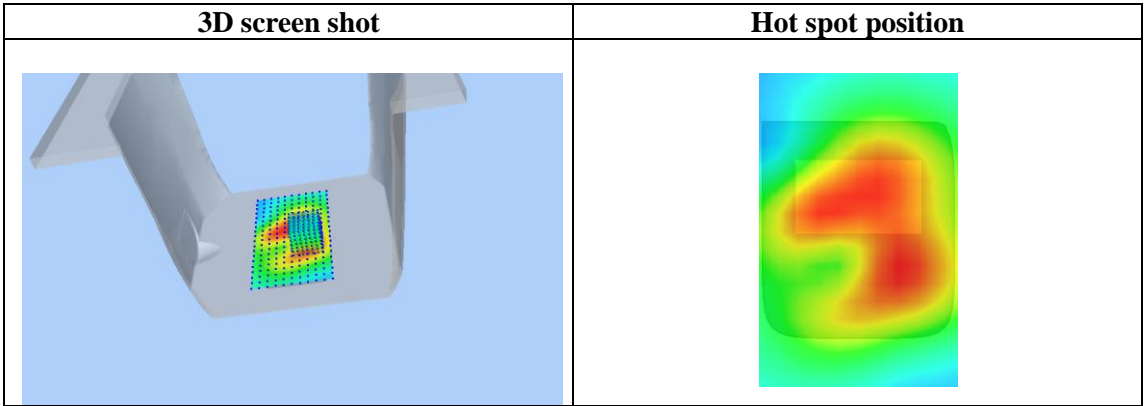
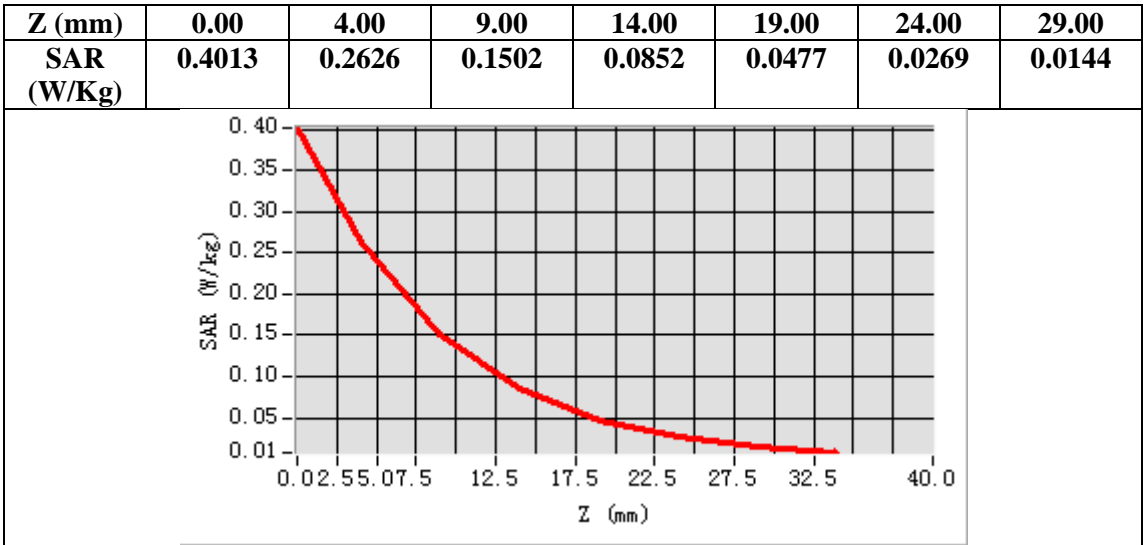
Area Scan	sam_direct_droit2_surf8mm.txt
ZoomScan	7x7x7,dx=5mm dy=5mm dz=5mm
Phantom	Validation plane
Device Position	Body Back
Band	2450MHz
Channels	Middle
Signal	Crest factor: 1.0



Maximum location: X=17.00, Y=-16.00

SAR Peak: 0.40 W/kg

SAR 10g (W/Kg)	0.141637
SAR 1g (W/Kg)	0.249212



Test Laboratory: AGC Lab  
2.4G Mid-Body-Worn- Back

Date: Oct. 13,2016

DUT: BABY MONITOR; Type: Taurus RX

Communication System: 2.4G; Communication System Band: 2.4G; Duty Cycle:100%; Conv.F=6.06;  
Frequency: 2440.705 MHz; Medium parameters used:  $f = 2450$  MHz;  $\sigma = 1.90$  mho/m;  $\epsilon_r = 54.11$ ;  $\rho = 1000$  kg/m<sup>3</sup> ;  
Phantom section: Flat Section  
Ambient temperature (°C): 21.0, Liquid temperature (°C): 20.5

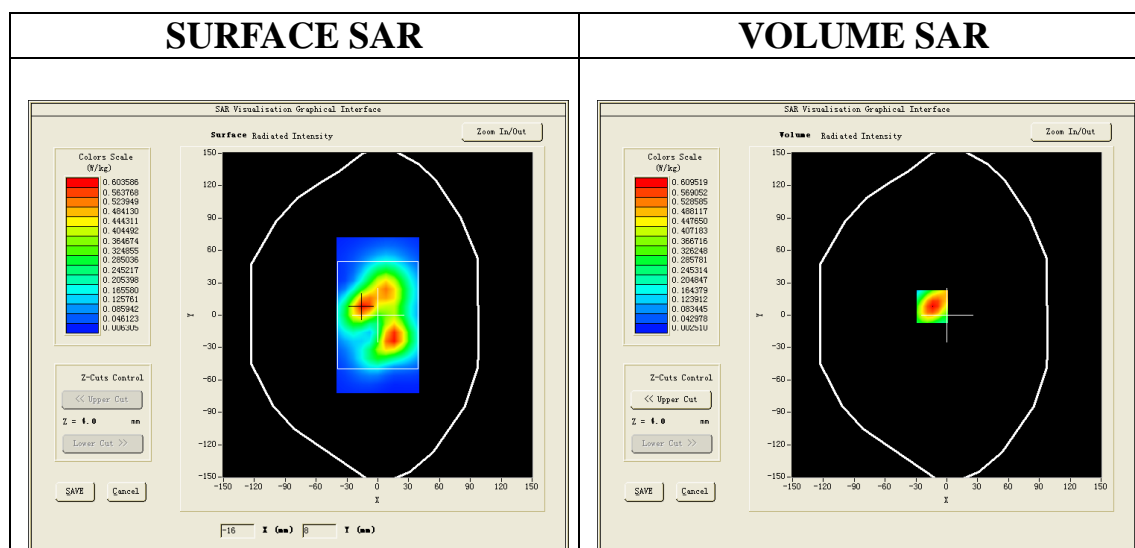
SATIMO Configuration:

- Probe: SSE5; Calibrated: 12/09/2015; Serial No.: SN 22/12 EP159
- Sensor-Surface: 4mm (Mechanical Surface Detection)
- Phantom: SAM twin phantom
- Measurement SW: OpenSAR V4\_02\_32

Configuration/2.4G Mid- Body- Back /Area Scan: Measurement grid: dx=8mm, dy=8mm

Configuration/2.4G Mid- Body- Back /Zoom Scan: Measurement grid: dx=5mm,dy=5mm, dz=5mm;

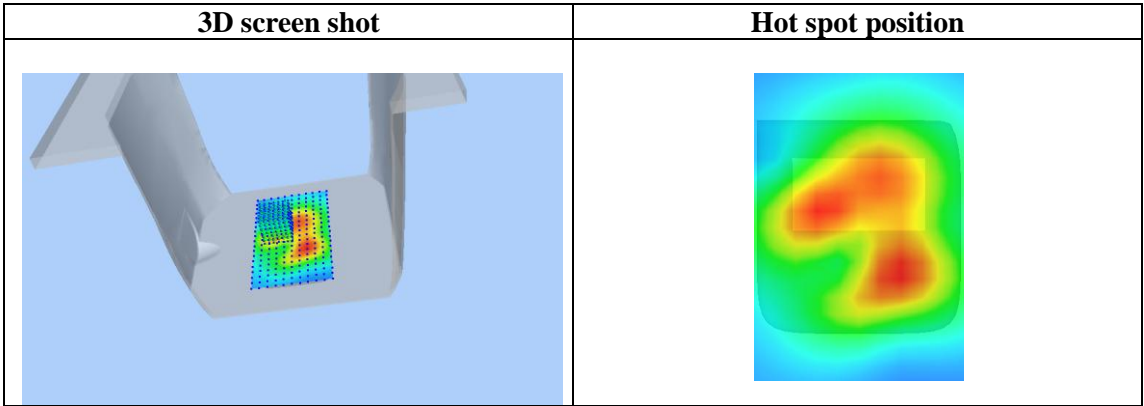
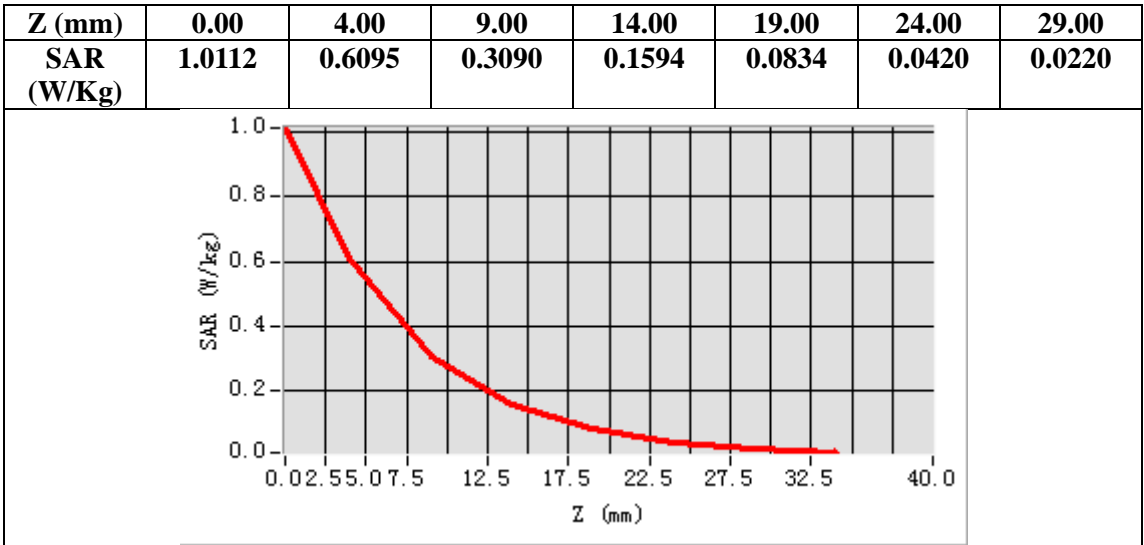
Area Scan	sam_direct_droit2_surf8mm.txt
ZoomScan	7x7x7,dx=5mm dy=5mm dz=5mm
Phantom	Validation plane
Device Position	Body Back
Band	2450MHz
Channels	Middle
Signal	Crest factor: 1.0



Maximum location: X=-14.00, Y=8.00

SAR Peak: 1.01 W/kg

SAR 10g (W/Kg)	0.287856
SAR 1g (W/Kg)	0.572522



Test Laboratory: AGC Lab  
2.4G Mid-Body-Worn- Front

Date: Oct. 13,2016

DUT: BABY MONITOR; Type: Taurus RX

Communication System: 2.4G; Communication System Band: 2.4G; Duty Cycle:100%; Conv.F=6.06;

Frequency: 2440.705 MHz; Medium parameters used:  $f = 2450$  MHz;  $\sigma = 1.90$  mho/m;  $\epsilon_r = 54.11$ ;  $\rho = 1000$  kg/m<sup>3</sup> ;

Phantom section: Flat Section

Ambient temperature (°C): 21.0, Liquid temperature (°C): 20.5

SATIMO Configuration:

•Probe: SSE5; Calibrated: 12/09/2015; Serial No.: SN 22/12 EP159

• Sensor-Surface: 4mm (Mechanical Surface Detection)

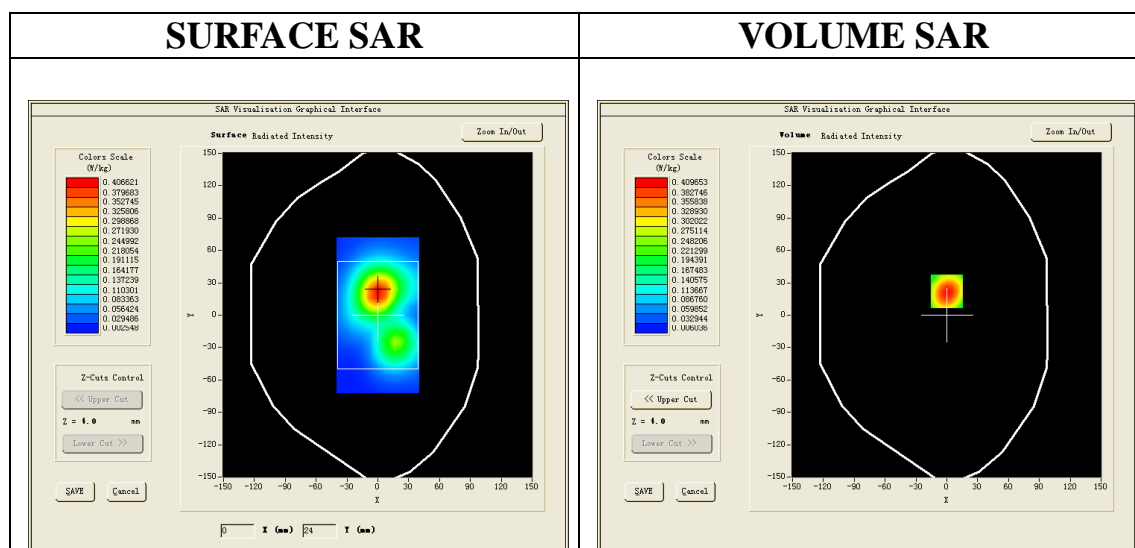
• Phantom: SAM twin phantom

• Measurement SW: OpenSAR V4\_02\_32

Configuration/2.4G Mid- Body- Front /Area Scan: Measurement grid: dx=8mm, dy=8mm

Configuration/2.4G Mid- Body- Front /Zoom Scan: Measurement grid: dx=5mm,dy=5mm, dz=5mm;

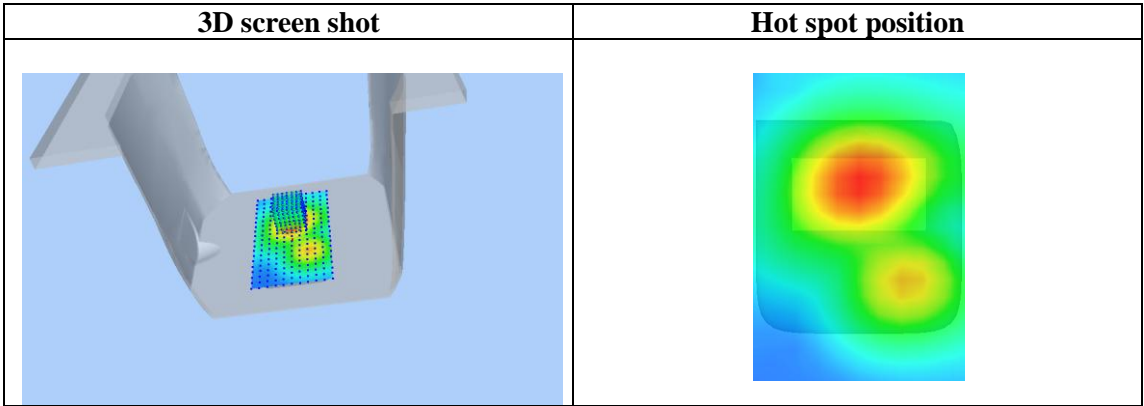
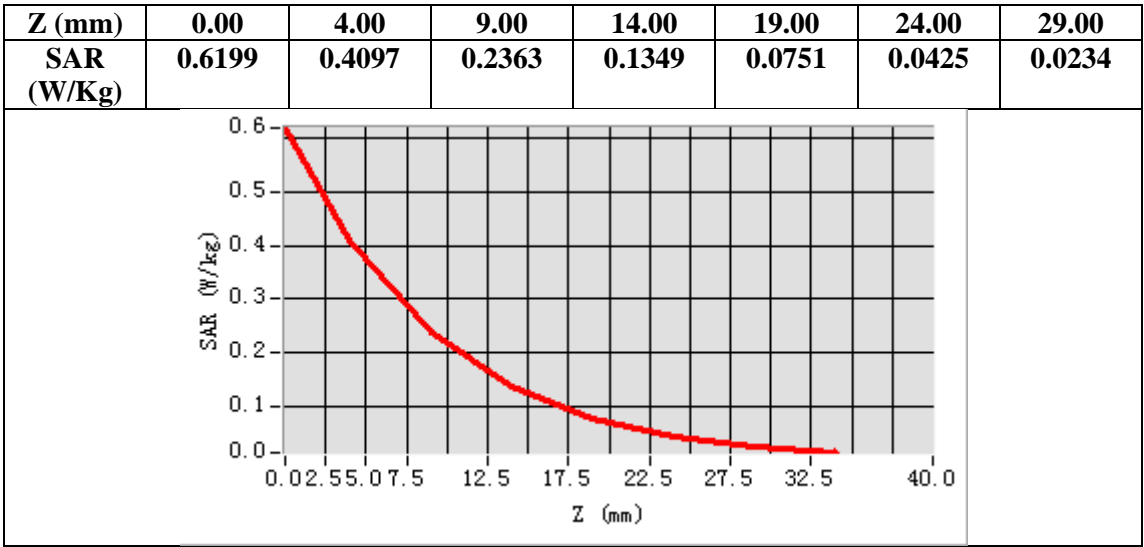
Area Scan	sam_direct_droit2_surf8mm.txt
ZoomScan	7x7x7,dx=5mm dy=5mm dz=5mm
Phantom	Validation plane
Device Position	Body Front
Band	2450MHz
Channels	Middle
Signal	Crest factor: 1.0



Maximum location: X=0.00, Y=22.00

SAR Peak: 0.62 W/kg

SAR 10g (W/Kg)	0.216111
SAR 1g (W/Kg)	0.386495





Test Laboratory: AGC Lab

Date: Oct. 13,2016

2.4G Mid-Edge 1

DUT: BABY MONITOR; Type: Taurus RX

Communication System: 2.4G; Communication System Band: 2.4G; Duty Cycle:100%; Conv.F=6.06;

Frequency: 2440.705 MHz; Medium parameters used:  $f = 2450$  MHz;  $\sigma = 1.90$  mho/m;  $\epsilon_r = 54.11$ ;  $\rho = 1000$  kg/m<sup>3</sup> ;

Phantom section: Flat Section

Ambient temperature (°C): 21.0, Liquid temperature (°C): 20.5

SATIMO Configuration:

• Probe: SSE5; Calibrated: 12/09/2015; Serial No.: SN 22/12 EP159

• Sensor-Surface: 4mm (Mechanical Surface Detection)

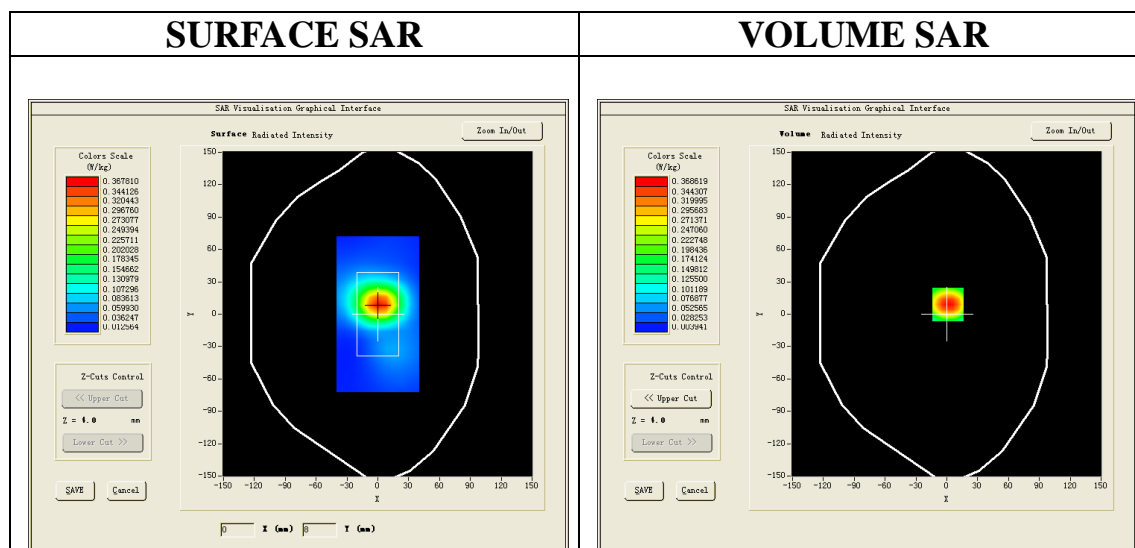
• Phantom: SAM twin phantom

• Measurement SW: OpenSAR V4\_02\_32

Configuration/2.4G Mid-Edge 1 /Area Scan: Measurement grid: dx=8mm, dy=8mm

Configuration/2.4G Mid-Edge 1 /Zoom Scan: Measurement grid: dx=5mm,dy=5mm, dz=5mm;

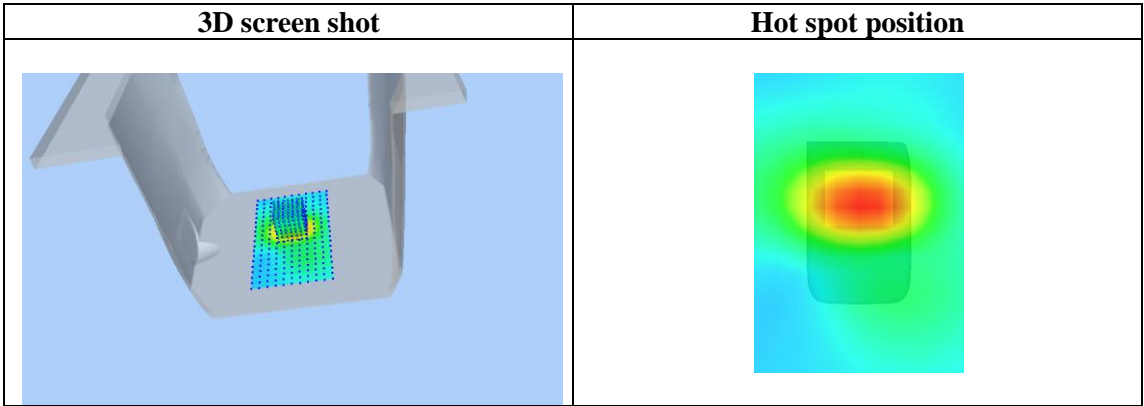
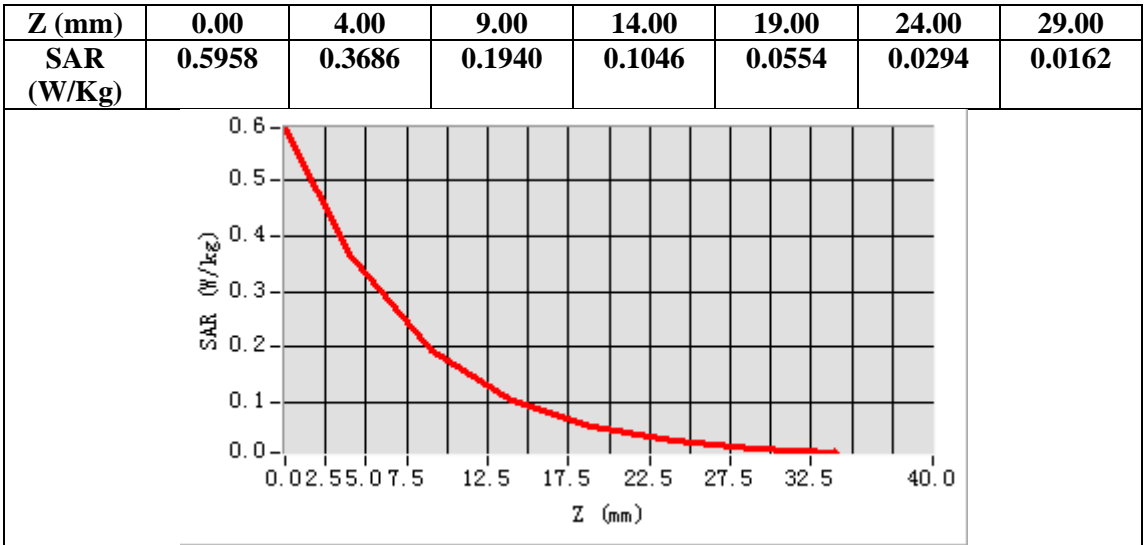
Area Scan	sam_direct_droit2_surf8mm.txt
ZoomScan	7x7x7,dx=5mm dy=5mm dz=5mm
Phantom	Validation plane
Device Position	Edge 1
Band	2450MHz
Channels	Middle
Signal	Crest factor: 1.0



Maximum location: X=1.00, Y=9.00

SAR Peak: 0.59 W/kg

SAR 10g (W/Kg)	0.183741
SAR 1g (W/Kg)	0.349098



Test Laboratory: AGC Lab

Date: Oct. 13,2016

2.4G Mid-Edge 2

DUT: BABY MONITOR; Type: Taurus RX

Communication System: 2.4G; Communication System Band: 2.4G; Duty Cycle:100%; Conv.F=6.06;

Frequency: 2440.705 MHz; Medium parameters used:  $f = 2450$  MHz;  $\sigma = 1.90$  mho/m;  $\epsilon_r = 54.11$ ;  $\rho = 1000$  kg/m<sup>3</sup> ;

Phantom section: Flat Section

Ambient temperature (°C): 21.0, Liquid temperature (°C): 20.5

SATIMO Configuration:

• Probe: SSE5; Calibrated: 12/09/2015; Serial No.: SN 22/12 EP159

• Sensor-Surface: 4mm (Mechanical Surface Detection)

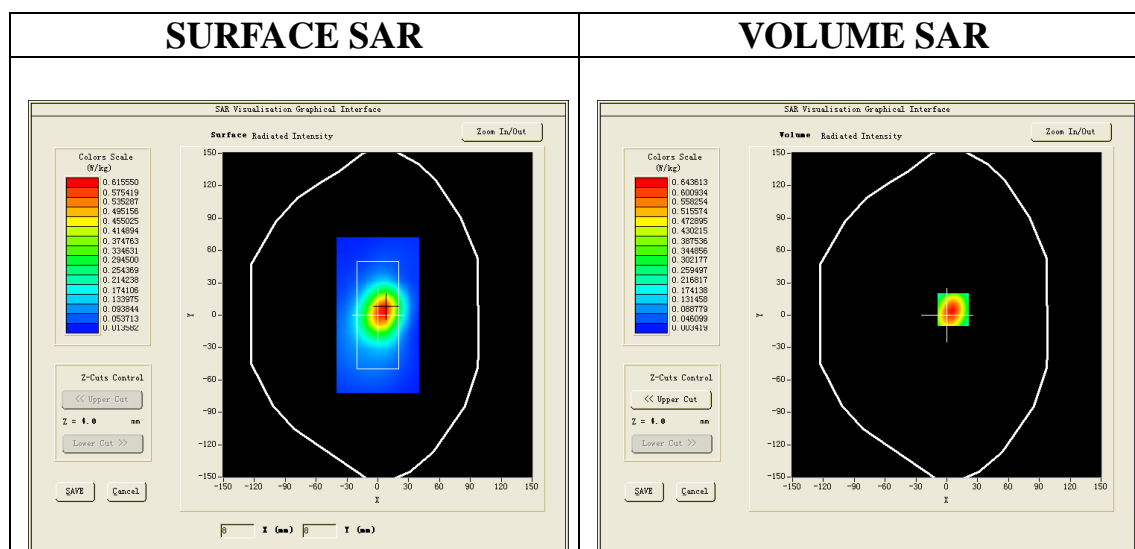
• Phantom: SAM twin phantom

• Measurement SW: OpenSAR V4\_02\_32

Configuration/2.4G Mid-Edge 2 /Area Scan: Measurement grid: dx=8mm, dy=8mm

Configuration/2.4G Mid-Edge 2 /Zoom Scan: Measurement grid: dx=5mm,dy=5mm, dz=5mm;

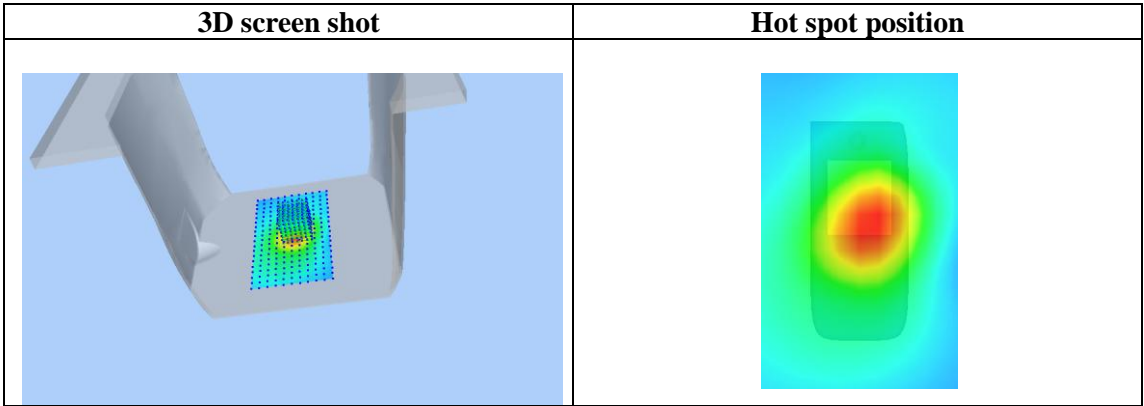
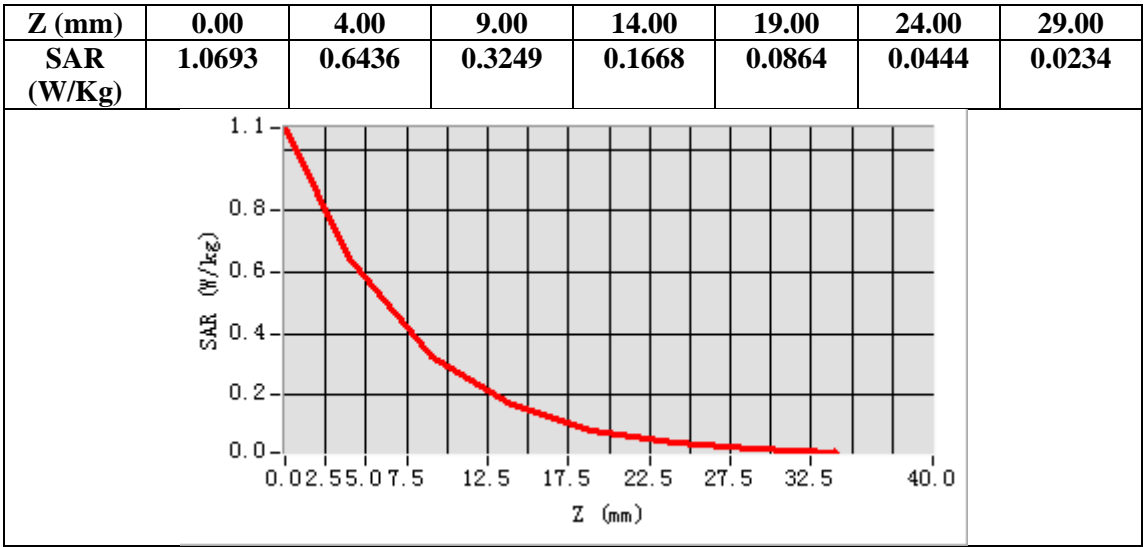
Area Scan	sam_direct_droit2_surf8mm.txt
ZoomScan	7x7x7,dx=5mm dy=5mm dz=5mm
Phantom	Validation plane
Device Position	Edge 2
Band	2450MHz
Channels	Middle
Signal	Crest factor: 1.0



Maximum location: X=6.00, Y=5.00

SAR Peak: 1.06 W/kg

SAR 10g (W/Kg)	0.308821
SAR 1g (W/Kg)	0.604631



## **APPENDIX C. TEST SETUP PHOTOGRAPHS & EUT PHOTOGRAPHS**

Refer to Attached files.

## **APPENDIX D. CALIBRATION DATA**

Refer to Attached files.