

BABIES'US
expect the best

True Sounds™
digital
audio monitor



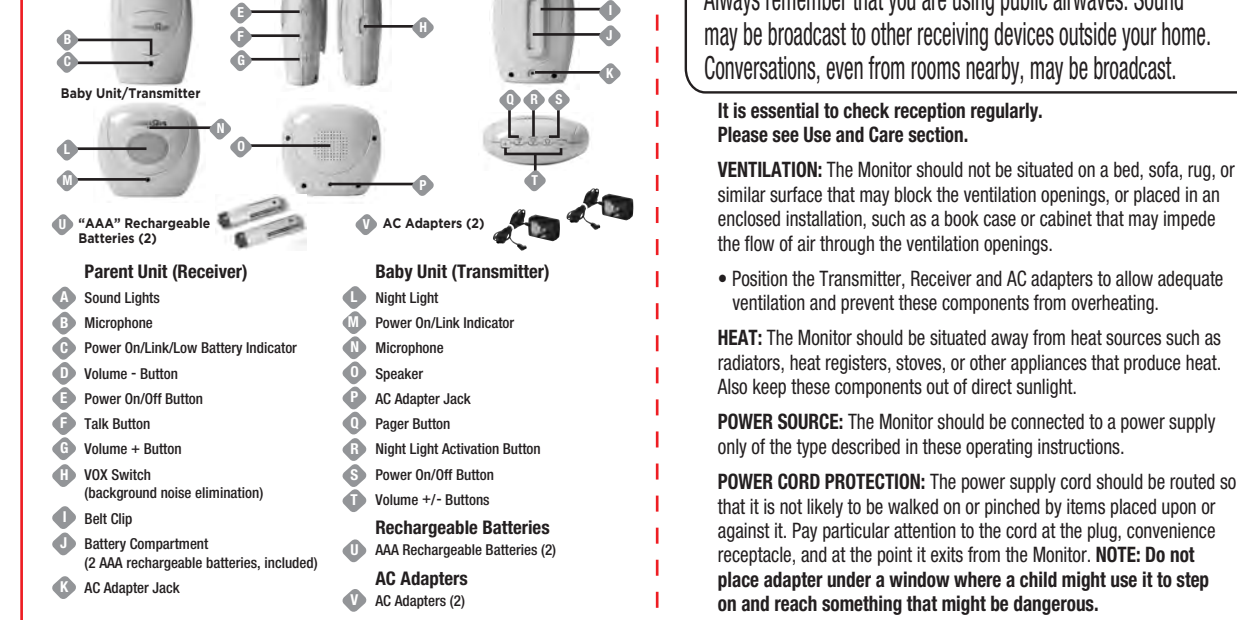
Thank you for purchasing this product by Baby'sUS. We are not only about safety, we're also about your satisfaction. If you have any questions or comments, please call our Consumer Response Department at 1-800-544-1108 or email us at info@babies-us.com. Please read the following instructions and warnings carefully. Keep these instructions for future reference.



WARNING!
Strangulation Hazard - Children have STRANGLED in cords. Keep cords out of reach of children more than 3 feet (0.9 m) away.

Strangulation Hazard - Children have STRANGLED in cords. Keep cords out of reach of children more than 3 feet (0.9 m) away.

FEATURES & COMPONENTS



BATTERY INSTALLATION & USE

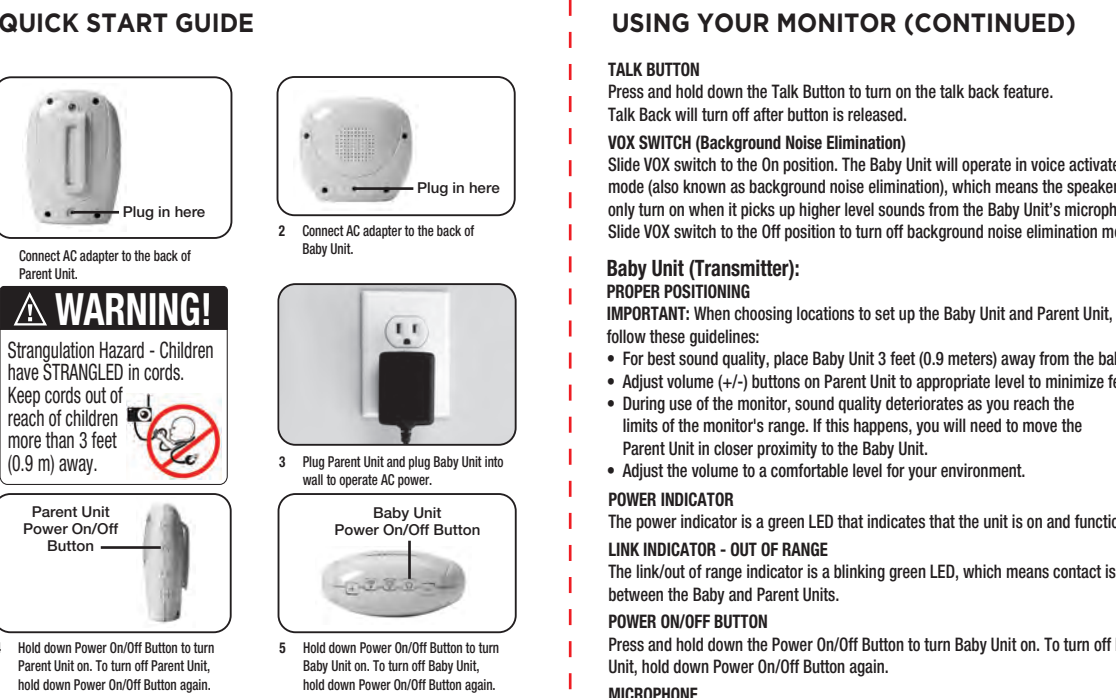
CAUTION!

- DO NOT mix old and new batteries.
- DO NOT mix alkaline (standard (carbon zinc), or rechargeable nickel-cadmium) batteries.
- Non-rechargeable batteries are not to be recharged.
- Rechargeable batteries are only to be charged under adult supervision.
- Only batteries of the same or equivalent type as recommended are to be used.
- Batteries are to be inserted with the correct polarity.
- Exhausted batteries are to be removed from the unit.
- The supply terminals are not to be short-circuited.
- Check that all contact surfaces are clean and bright before installing batteries.
- Keep batteries out of child's reach. Swallowing a battery could be fatal.
- Used batteries should be disposed of properly.
- Do not dispose of batteries in fire - they may explode or leak and cause injury.
- Remove batteries when stored for long periods of non-use.
- DO NOT use audio monitor system in portable mode when batteries are low.
- Ensure that the battery compartment is completely secure after replacing batteries.

BATTERY RECHARGING

1. Remove the battery compartment cover from the parent unit.
2. Insert 2 AAA rechargeable batteries (included). Make sure batteries align properly in the correct position "+" and negative "-" polarity marked in the battery compartment.
3. Replace the battery compartment cover.

QUICK START GUIDE



WARNING!
Strangulation Hazard - Children have STRANGLED in cords. Keep cords out of reach of children more than 3 feet (0.9 m) away.

Strangulation Hazard - Children have STRANGLED in cords. Keep cords out of reach of children more than 3 feet (0.9 m) away.

CAUTION!
This monitor is not intended to be used as a medical monitor and its use should not replace proper adult supervision. You should check your child's activity at regular intervals as this monitor will not alert parents to the silent activities of a child.

CAUTION!
To protect your privacy, always turn the monitor off when not in use. Always remember that you are using public airwaves. Sound may be broadcast to other receiving devices outside your home. Conversations, even from rooms nearby, may be broadcast.

To protect your privacy, always turn the monitor off when not in use. Always remember that you are using public airwaves. Sound may be broadcast to other receiving devices outside your home. Conversations, even from rooms nearby, may be broadcast.

USE YOUR MONITOR

DO NOT PLACE UNITS IN CHILD ROOM ON CRIB. KEEP OUT OF REACH OF CHILDREN.

AC ADAPTER

The Parent Unit operates on household electricity with the AC Adapter or with 2 AAA rechargeable batteries (included). The Baby Unit operates on household electricity with the AC Adapter only. The Parent Unit will automatically convert to AC operation when used with the AC Adapter. It is not necessary to remove the battery during AC operation. The Parent Unit will automatically switch back to battery power when plug is disconnected from the AC Adapter.

The AC Adapter should be used whenever possible on the Parent Unit to save battery life. This is done by inserting the AC Adapter into the AC Adapter Jack. Then simply place the AC Adapter into a nearby standard household outlet (120V AC outlet). The AC Adapter may become slightly warm to the touch during operation. This is normal.

This AC Adapter is a low voltage power source which allows you to use your household electricity to run the Baby and Parent Units when it connects to the AC Adapter jack in the Parent Unit and in the Baby Unit, and plugs into any standard electrical outlet in your home.

To remove AC adapter from the outlet, firmly grasp the adapter "bracket." DO NOT pull on the cord, as this could damage it.

CAUTION: This AC Adapter was made with a specific design for this Monitor by Safety 1st. It cannot be used with any other appliance, and never use a different type of adapter with this Monitor.

CAUTION: This AC Adapter was made with a specific design for this Monitor by Safety 1st. It cannot be used with any other appliance, and never use a different type of adapter with this Monitor.

CAUTION: This AC Adapter was made with a specific design for this Monitor by Safety 1st. It cannot be used with any other appliance, and never use a different type of adapter with this Monitor.

CAUTION: This AC Adapter was made with a specific design for this Monitor by Safety 1st. It cannot be used with any other appliance, and never use a different type of adapter with this Monitor.

CAUTION: This AC Adapter was made with a specific design for this Monitor by Safety 1st. It cannot be used with any other appliance, and never use a different type of adapter with this Monitor.

CAUTION: This AC Adapter was made with a specific design for this Monitor by Safety 1st. It cannot be used with any other appliance, and never use a different type of adapter with this Monitor.

CAUTION: This AC Adapter was made with a specific design for this Monitor by Safety 1st. It cannot be used with any other appliance, and never use a different type of adapter with this Monitor.

CAUTION: This AC Adapter was made with a specific design for this Monitor by Safety 1st. It cannot be used with any other appliance, and never use a different type of adapter with this Monitor.

CAUTION: This AC Adapter was made with a specific design for this Monitor by Safety 1st. It cannot be used with any other appliance, and never use a different type of adapter with this Monitor.

CAUTION: This AC Adapter was made with a specific design for this Monitor by Safety 1st. It cannot be used with any other appliance, and never use a different type of adapter with this Monitor.

CAUTION: This AC Adapter was made with a specific design for this Monitor by Safety 1st. It cannot be used with any other appliance, and never use a different type of adapter with this Monitor.

CAUTION: This AC Adapter was made with a specific design for this Monitor by Safety 1st. It cannot be used with any other appliance, and never use a different type of adapter with this Monitor.

CAUTION: This AC Adapter was made with a specific design for this Monitor by Safety 1st. It cannot be used with any other appliance, and never use a different type of adapter with this Monitor.

CAUTION: This AC Adapter was made with a specific design for this Monitor by Safety 1st. It cannot be used with any other appliance, and never use a different type of adapter with this Monitor.

CAUTION: This AC Adapter was made with a specific design for this Monitor by Safety 1st. It cannot be used with any other appliance, and never use a different type of adapter with this Monitor.

CAUTION: This AC Adapter was made with a specific design for this Monitor by Safety 1st. It cannot be used with any other appliance, and never use a different type of adapter with this Monitor.

CAUTION: This AC Adapter was made with a specific design for this Monitor by Safety 1st. It cannot be used with any other appliance, and never use a different type of adapter with this Monitor.

CAUTION: This AC Adapter was made with a specific design for this Monitor by Safety 1st. It cannot be used with any other appliance, and never use a different type of adapter with this Monitor.

CAUTION: This AC Adapter was made with a specific design for this Monitor by Safety 1st. It cannot be used with any other appliance, and never use a different type of adapter with this Monitor.

CAUTION: This AC Adapter was made with a specific design for this Monitor by Safety 1st. It cannot be used with any other appliance, and never use a different type of adapter with this Monitor.

CAUTION: This AC Adapter was made with a specific design for this Monitor by Safety 1st. It cannot be used with any other appliance, and never use a different type of adapter with this Monitor.

CAUTION: This AC Adapter was made with a specific design for this Monitor by Safety 1st. It cannot be used with any other appliance, and never use a different type of adapter with this Monitor.

CAUTION: This AC Adapter was made with a specific design for this Monitor by Safety 1st. It cannot be used with any other appliance, and never use a different type of adapter with this Monitor.

CAUTION: This AC Adapter was made with a specific design for this Monitor by Safety 1st. It cannot be used with any other appliance, and never use a different type of adapter with this Monitor.

CAUTION: This AC Adapter was made with a specific design for this Monitor by Safety 1st. It cannot be used with any other appliance, and never use a different type of adapter with this Monitor.

CAUTION: This AC Adapter was made with a specific design for this Monitor by Safety 1st. It cannot be used with any other appliance, and never use a different type of adapter with this Monitor.

CAUTION: This AC Adapter was made with a specific design for this Monitor by Safety 1st. It cannot be used with any other appliance, and never use a different type of adapter with this Monitor.

CAUTION: This AC Adapter was made with a specific design for this Monitor by Safety 1st. It cannot be used with any other appliance, and never use a different type of adapter with this Monitor.

CAUTION: This AC Adapter was made with a specific design for this Monitor by Safety 1st. It cannot be used with any other appliance, and never use a different type of adapter with this Monitor.

CAUTION: This AC Adapter was made with a specific design for this Monitor by Safety 1st. It cannot be used with any other appliance, and never use a different type of adapter with this Monitor.

CAUTION: This AC Adapter was made with a specific design for this Monitor by Safety 1st. It cannot be used with any other appliance, and never use a different type of adapter with this Monitor.

CAUTION: This AC Adapter was made with a specific design for this Monitor by Safety 1st. It cannot be used with any other appliance, and never use a different type of adapter with this Monitor.

CAUTION: This AC Adapter was made with a specific design for this Monitor by Safety 1st. It cannot be used with any other appliance, and never use a different type of adapter with this Monitor.

CAUTION: This AC Adapter was made with a specific design for this Monitor by Safety 1st. It cannot be used with any other appliance, and never use a different type of adapter with this Monitor.

CAUTION: This AC Adapter was made with a specific design for this Monitor by Safety 1st. It cannot be used with any other appliance, and never use a different type of adapter with this Monitor.

CAUTION: This AC Adapter was made with a specific design for this Monitor by Safety 1st. It cannot be used with any other appliance, and never use a different type of adapter with this Monitor.

CAUTION: This AC Adapter was made with a specific design for this Monitor by Safety 1st. It cannot be used with any other appliance, and never use a different type of adapter with this Monitor.

CAUTION: This AC Adapter was made with a specific design for this Monitor by Safety 1st. It cannot be used with any other appliance, and never use a different type of adapter with this Monitor.

CAUTION: This AC Adapter was made with a specific design for this Monitor by Safety 1st. It cannot be used with any other appliance, and never use a different type of adapter with this Monitor.

CAUTION: This AC Adapter was made with a specific design for this Monitor by Safety 1st. It cannot be used with any other appliance, and never use a different type of adapter with this Monitor.

CAUTION: This AC Adapter was made with a specific design for this Monitor by Safety 1st. It cannot be used with any other appliance, and never use a different type of adapter with this Monitor.

CAUTION: This AC Adapter was made with a specific design for this Monitor by Safety 1st. It cannot be used with any other appliance, and never use a different type of adapter with this Monitor.

CAUTION: This AC Adapter was made with a specific design for this Monitor by Safety 1st. It cannot be used with any other appliance, and never use a different type of adapter with this Monitor.

CAUTION: This AC Adapter was made with a specific design for this Monitor by Safety 1st. It cannot be used with any other appliance, and never use a different type of adapter with this Monitor.

CAUTION: This AC Adapter was made with a specific design for this Monitor by Safety 1st. It cannot be used with any other appliance, and never use a different type of adapter with this Monitor.

CAUTION: This AC Adapter was made with a specific design for this Monitor by Safety 1st. It cannot be used with any other appliance, and never use a different type of adapter with this Monitor.

USING YOUR MONITOR (CONTINUED)

TALK BUTTON

Press and hold down the Talk Button to turn on the talk back feature. Talk Back will turn off after battery is recharged.

VSD SWITCH (Background Noise Elimination)

Slide VSD switch to the On position. The Baby Unit will operate in noise reduced mode (also known as background noise elimination), which means the speaker will only turn on when it picks up higher level sounds from the Baby Unit's microphone. Slide VSD switch to the Off position to turn off background noise elimination mode.

Baby Unit (Transmitter):

POWER POSITIONING

IMPORTANT: When choosing locations to set up the Baby Unit and Parent Unit, follow these guidelines:

- For best sound quality, place Baby Unit 3 feet (0.9 meters) away from the baby.
- Adjust volume (+/-) buttons on Parent Unit to appropriate level to minimize feedback.
- During use of the monitor, sound quality deteriorates as you reach the limits of the monitor's range. If this happens, you will need to move the Parent Unit in closer proximity to the Baby Unit.
- Adjust the volume to a comfortable level for your environment.

POWER INDICATOR

The power indicator is a green LED that indicates that the unit is on and functioning.

LINK INDICATOR - OUT OF RANGE

The link/out of range indicator is a blinking green LED, which means contact is lost between the Baby and Parent Units.

POWER ON/OFF BUTTON

Press and hold down the Power On/Off Button to turn Baby Unit on. To turn off Baby Unit, hold down Power On/Off Button again.

MICROPHONE

The microphone is located on the Baby Unit, which activates the night light feature.

NIGHT LIGHT BUTTON

Press the Night Light Button on the top of the Baby Unit, which will activate the night light feature. Night light will remain on until you press the Night Light Button again.

PAPER BUTTON

The Paper Button is helpful to locate a misplaced Parent Unit. With the Baby Unit on, press the paper button on the Baby Unit. Any button press on the parent unit will turn off paper beeper. NOTE: The Parent Unit will only beep if it is powered on.

TRUBLESHOOTING

IF YOU ARE STILL HAVING PROBLEMS, PLEASE CALL TOLL FREE FOR HELP (800) 544-1108.

PROBLEM	POSSIBLE CAUSE	SOLUTION
Power indicator light not working	Power is not getting to the unit	Make sure you're not using a wall outlet that is turned on by a switch. Make sure AC adapter is plugged into wall and the unit.
Parent's unit has no sound	Out of range	Bring Parent's Unit closer to Baby's Unit.
Volume is too low	Adjust the volume	Look for any noise source in baby's room. Remove noise source or move Baby Unit away from the source. Reduce the distance between the two Units or turn off lights. Turn off the appliances that may be causing interference.
Static or interference in the Parent Transmitter	Appliances with loud fans near Baby Unit may be blocking transmissions	Unit may be under fluorescent lights. Local interference from electrical or radio frequency appliance near your location.
Parent Unit is making loud noise	Units are too close together	Parent Unit needs to be at least 3 feet (0.9 meters) away from the Baby Unit.
Weak sound coming from Parent Unit	Volume on Parent Unit may be too high	Turn down volume on the Parent Unit.
Weak sound coming from Parent Unit	Battery may be weak	Check battery, recharge if necessary.
Unit may be too far away from each other	Units may be too far away from each other	Move the Units closer to each other.
Can't hear baby's sounds	Volume may be too low	Press the Volume + Button to turn up volume.
I'm talking to baby but can't hear baby	Need to remove Talk Back button to hear baby response	Release Talk Back button after speaking to baby.
Warning light is on	Warning light is on	Warning light is on

FCC Warning

Any changes or modifications not expressly approved by the party responsible for compliance with FCC rules may void the user's authority to operate the equipment.

This device complies with part 15 of the FCC Rules. Operation is subject to the following conditions: (1) This device may not cause harmful interference, and (2) this device must accept any interference received, including interference that may cause undesired operation.

IC Warning

To ensure continued compliance, any changes or modifications not expressly approved by the party responsible for compliance with IC rules may void the user's authority to operate the equipment.

(Example: use only shielded cables when connecting to computer or peripheral devices).

This device complies with Industry Canada license exempt RSS standard(s). Operation is subject to the following conditions: (1) This device must not cause interference, and (2) this device must accept any interference received, including interference that may cause undesired operation of the device.

Radiation Exposure Statement

This product is a radio transmitter and receiver. It is designed and manufactured to exceed the maximum limits for exposure to radio frequency (RF) energy set by the Federal Communications Commission (FCC) of the U.S. government. These limits are part of comprehensive guidelines and standards that protect the safety of the general population. The guidelines are based on the safety standards previously set by both U.S. and international standards bodies. These standards include a substantial safety margin designed to ensure the safety of all persons, regardless of age.

HELPFUL HINTS

Use household electricity whenever possible. When the AC Adapter is used with your household electricity, you will find that the power is stronger and more consistent than when you rely solely on the battery. Range and sound quality also depends on the construction of your house. Steel reinforced wall, for example, reduces the effective range of the monitor. Consider the battery so you will have power when you don't have easy access to AC outlets.

When not using the Unit, remove AC Adapter and be sure the power button is "OFF"

When you are not using the AC Adapter, remove it from the Unit and store it in a safe. If you place the unit you need it again. If the AC Adapter is plugged into the Parent Unit but not being used in an electrical outlet, the AC Adapter will prevent battery operation of the Unit.

When using the AC Adapter with household electricity, make sure the outlet is "ON"

Some electrical outlets are powered through a switch in the room. If the Baby Unit is plugged in and turned "ON", the power indicator or light should be lit. If it is not, try turning the light switch in the room "ON".

USE AND CARE

IMPORTANT - CHECK RECEPTION:

The first time you use your monitoring system, two adults should test it in the following way:

- Place Parent Unit at least 20 ft. (6m) away from Baby Unit.
- Have an adult speak into Baby Unit at various levels (soft to loud) while another adult checks Parent Unit for the proper sound reception.

Try Parent Unit in every location that it will be used.

Care and Cleaning:

Use a soft, dry cloth to keep your monitor free from dust.

DO NOT immerse product in water.

USE AND CARE

IMPORTANT - CHECK RECEPTION:

The first time you use your monitoring system, two adults should test it in the following way:

- Place Parent Unit at least 20 ft. (6m) away from Baby Unit.
- Have an adult speak into Baby Unit at various levels (soft to loud) while another adult checks Parent Unit for the proper sound reception.

Try Parent Unit in every location that it will be used.

Care and Cleaning:

Use a soft, dry cloth to keep your monitor free from dust.

DO NOT immerse product in water.

USE AND CARE

IMPORTANT - CHECK RECEPTION:

The first time you use your monitoring system, two adults should test it in the following way:

- Place Parent Unit at least 20 ft. (6m) away from Baby Unit.
- Have an adult speak into Baby Unit at various levels (soft to loud) while another adult checks Parent Unit for the proper sound reception.

Try Parent Unit in every location that it will be used.

Care and Cleaning:

Use a soft, dry cloth to keep your monitor free from dust.

DO NOT immerse product in water.

USE AND CARE

IMPORTANT - CHECK RECEPTION:

The first time you use your monitoring system, two adults should test it in the following way:

- Place Parent Unit at least 20 ft. (6m) away from Baby Unit.
- Have an adult speak into Baby Unit at various levels (soft to loud) while another adult checks Parent Unit for the proper sound reception.

Try Parent Unit in every location that it will be used.

Care and Cleaning:

Use a soft, dry cloth to keep your monitor free from dust.

DO NOT immerse product in water.

USE AND CARE

IMPORTANT - CHECK RECEPTION:

The first time you use your monitoring system, two adults should test it in the following way:

- Place Parent Unit at least 20 ft. (6m) away from Baby Unit.
- Have an adult speak into Baby Unit at various levels (soft to loud) while another adult checks Parent Unit for the proper sound reception.

Try Parent Unit in every location that it will be used.

Care and Cleaning:

Use a soft, dry cloth to keep your monitor free from dust.

DO NOT immerse product in water.

USE AND CARE

IMPORTANT - CHECK RECEPTION:

The first time you use your monitoring system, two adults should test it in the following way:

- Place Parent Unit at least 20 ft. (6m) away from Baby Unit.
- Have an adult speak into Baby Unit at various levels (soft to loud) while another adult checks Parent Unit for the proper sound reception.

Try Parent Unit in every location that it will be used.

Care and Cleaning:

Use a soft, dry cloth to keep your monitor free from dust.

DO NOT immerse product in water.

USE AND CARE

IMPORTANT - CHECK RECEPTION:

The first time you use your monitoring system, two adults should test it in the following way:

- Place Parent Unit at least 20 ft. (6m) away from Baby Unit.
- Have an adult speak into Baby Unit at various levels (soft to loud) while another adult checks Parent Unit for the proper sound reception.

Try Parent Unit in every location that it will be used.

Care and Cleaning:

Use a soft, dry cloth to keep your monitor free from dust.

DO NOT immerse product in water.

USE AND CARE

IMPORTANT - CHECK RECEPTION:

The first time you use your monitoring system, two adults should test it in the following way:

- Place Parent Unit at least 20 ft. (6m) away from Baby Unit.
- Have an adult speak into Baby Unit at various levels (soft to loud) while another adult checks Parent Unit for the proper sound reception.

Try Parent Unit in every location that it will be used.

Care and Cleaning:

Use a soft, dry cloth to keep your monitor free from dust.

DO NOT immerse product in water.

USE AND CARE

IMPORTANT - CHECK RECEPTION:

The first time you use your monitoring system, two adults should test it in the following way:

- Place Parent Unit at least 20 ft. (6m) away from Baby Unit.
- Have an adult speak into Baby Unit at various levels (soft to loud) while another adult checks Parent Unit for the proper sound reception.

Try Parent Unit in every location that it will be used.

Care and Cleaning:

Use a soft, dry cloth to keep your monitor free from dust.

DO NOT immerse product in water.

USE AND CARE

IMPORTANT - CHECK RECEPTION: