

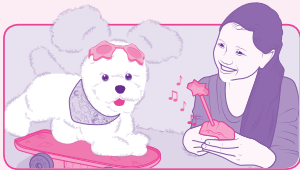
## Ride, Ride, Ride!



Press to move skateboard forward.

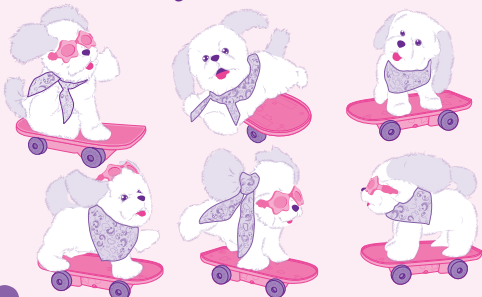


Press to turn and spin skateboard.



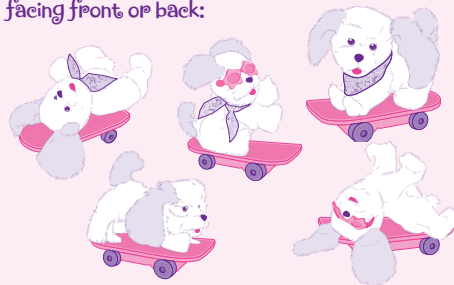
You can pose her to do  
30+ awesome tricks!

She can do any of these poses in 3 different  
positions - facing front, back or sideways:



3

She can do these poses in 2 different positions -  
facing front or back:



She can also do these poses facing front:



## Grooming

- Gently brush her with a cloth or soft brush and wipe off dirt immediately. No detergents or stain removers.
- Don't get her wet; to remove stains use a slightly damp cloth.

4

**ARTECH**  
Solution of Graphics Communication

Customer Code: 5008/A16490000\_FRF SkateboardPup\_INST.indd  
2012-12-0446/Sunday/2013-01-03/EP1\_C1-Coated

## How to get her to ride in a wheelie position

### Basic Wheelie

1. Firmly place her in sitting position toward back of skateboard, facing front of the skateboard.
2. Tip skateboard back.
3. Press "forward" button on remote.



### Advanced Wheelie

1. Firmly place her in sitting position toward back of skateboard, facing front of the skateboard
2. Press "turn" button on remote.
3. Have her spin several times and while she's in a spin, quickly hit the "forward" button
4. She'll pop a wheelie!



5

## IMPORTANT: BATTERY INFORMATION



### CAUTION:

1. As with all small batteries, the batteries used with this toy should be kept away from small children who still put things in their mouths. If they are swallowed, promptly see a doctor and have the doctor phone (202) 625-3333 collect. If you reside outside the United States, have the doctor call your local poison control center.
2. TO AVOID BATTERY LEAKAGE
  - a. Always follow the instructions carefully. Use only batteries specified and be sure to insert them correctly by matching the + and - polarity markings.
  - b. Do not mix old batteries and new batteries or standard (carbon-zinc) with alkaline batteries.
  - c. Remove exhausted or dead batteries from the product.
  - d. Remove batteries if product is not to be played with for a long time.
  - e. Do not short-circuit the supply terminals.
  - f. RECHARGEABLE BATTERIES: Do not mix these with any other types of batteries. Always remove from the product before recharging. Recharge batteries under adult supervision. DO NOT RECHARGE OTHER TYPES OF BATTERIES.
3. Should this product cause, or be affected by, local electrical interference, move it away from other electrical equipment. Reset (switching off and back on again or removing and re-inserting batteries) if necessary.

6

**ARTECH**  
Solution of Graphics Communication

Customer Code: 5008/A16490000\_FRF SkateboardPup\_INST.indd  
2012-12-0446/Sunday/2013-01-03/EPI\_CIT-Coated

灃能設計制作(深圳)有限公司

www.artechgraphics.com.hk | info@artechgraphics.com.hk | Tel 755-3322 8070

219

527

527

219