

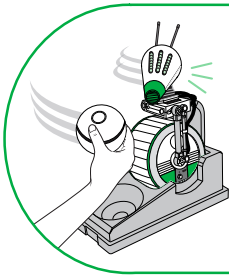
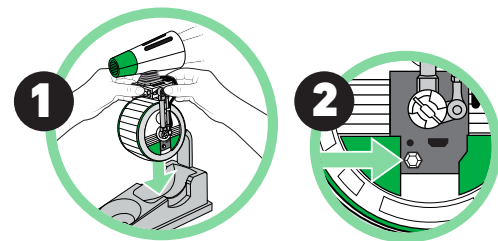
DESKTOP PLAY • DESKTOP PLAY • DESKTOP PLAY • DESKTOP PLAY

Place D-0 securely in base. **ONLY HANDLE DROID AS SHOWN BELOW.** Press power button on wheel to wake up. Hold ball controller in front of D-0 and press button as directed to play while stationed in base.

Place D-0 securely in base. **ONLY HANDLE DROID AS SHOWN BELOW.** Press power button on wheel to wake up. Hold ball controller in front of D-0 and press button as directed to play while stationed in base.

Place D-0 securely in base. **ONLY HANDLE DROID AS SHOWN BELOW.** Press power button on wheel to wake up. Hold ball controller in front of D-0 and press button as directed to play while stationed in base.

Place D-0 securely in base. **ONLY HANDLE DROID AS SHOWN BELOW.** Press power button on wheel to wake up. Hold ball controller in front of D-0 and press button as directed to play while stationed in base.

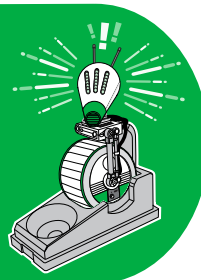


**FOLLOW MODE • FOLLOW MODE
FOLLOW MODE • FOLLOW MODE**

Press ball controller button once and D-0 will move its head to follow.
Press ball controller button once and D-0 will move its head to follow.
Press ball controller button once and D-0 will move its head to follow.
Press ball controller button once and D-0 will move its head to follow.

**GUARD MODE • GUARD MODE
GUARD MODE • GUARD MODE**

Press ball controller button 3 times. D-0 will respond to sound and motion.
Press ball controller button 3 times. D-0 will respond to sound and motion.
Press ball controller button 3 times. D-0 will respond to sound and motion.
Press ball controller button 3 times. D-0 will respond to sound and motion.



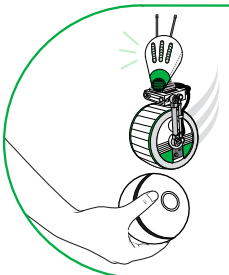
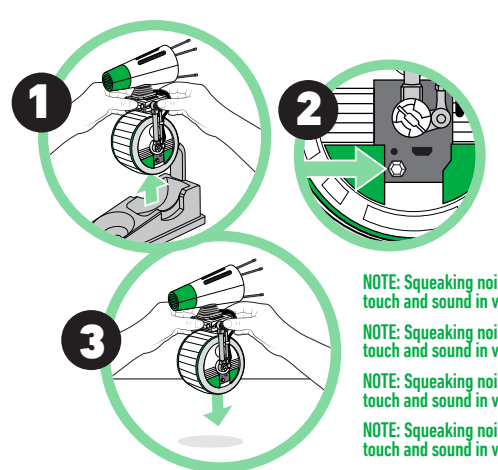
FLOOR PLAY • FLOOR PLAY • FLOOR PLAY • FLOOR PLAY

Remove D-0 from base, then press power button to wake up. **ONLY HANDLE DROID AS SHOWN BELOW.** For best results, place on **uncarpeted, flat surface.** Hold ball controller in front of D-0 and press button as directed to play.

Remove D-0 from base, then press power button to wake up. **ONLY HANDLE DROID AS SHOWN BELOW.** For best results, place on **uncarpeted, flat surface.** Hold ball controller in front of D-0 and press button as directed to play.

Remove D-0 from base, then press power button to wake up. **ONLY HANDLE DROID AS SHOWN BELOW.** For best results, place on **uncarpeted, flat surface.** Hold ball controller in front of D-0 and press button as directed to play.

Remove D-0 from base, then press power button to wake up. **ONLY HANDLE DROID AS SHOWN BELOW.** For best results, place on **uncarpeted, flat surface.** Hold ball controller in front of D-0 and press button as directed to play.



**CHASE MODE • CHASE MODE
CHASE MODE • CHASE MODE**

Press ball controller button once and D-0 will chase.
Press ball controller button once and D-0 will chase.
Press ball controller button once and D-0 will chase.
Press ball controller button once and D-0 will chase.

**HIGH ALERT ALARM • HIGH ALERT ALARM
HIGH ALERT ALARM • HIGH ALERT ALARM**

Press ball controller button 3 times and D-0 will sound an alarm.
Press ball controller button 3 times and D-0 will sound an alarm.
Press ball controller button 3 times and D-0 will sound an alarm.
Press ball controller button 3 times and D-0 will sound an alarm.



NOTE: Squeaking noise is normal until D-0 is engaged in play with ball controller. D-0 will react to motion, touch and sound in various ways; experimentation is recommended!

NOTE: Squeaking noise is normal until D-0 is engaged in play with ball controller. D-0 will react to motion, touch and sound in various ways; experimentation is recommended!

NOTE: Squeaking noise is normal until D-0 is engaged in play with ball controller. D-0 will react to motion, touch and sound in various ways; experimentation is recommended!

NOTE: Squeaking noise is normal until D-0 is engaged in play with ball controller. D-0 will react to motion, touch and sound in various ways; experimentation is recommended!

TROUBLESHOOTING • TROUBLESHOOTING • TROUBLESHOOTING • TROUBLESHOOTING

For best results, ensure ball controller and any sound or motion interaction is directly in front of D-0 and within range.

If D-0 is unresponsive or acting erratically, confirm droid is fully charged. If charged and still acting strange, press reset button next to USB charging port with paper clip.

Press and hold power button for 3 seconds to turn D-0 off.

Lay D-0 flat on its side to stop wheel from spinning if needed.

For best results, ensure ball controller and any sound or motion interaction is directly in front of D-0 and within range.

If D-0 is unresponsive or acting erratically, confirm droid is fully charged. If charged and still acting strange, press reset button next to USB charging port with paper clip.

Press and hold power button for 3 seconds to turn D-0 off.

Lay D-0 flat on its side to stop wheel from spinning if needed.

For best results, ensure ball controller and any sound or motion interaction is directly in front of D-0 and within range.

If D-0 is unresponsive or acting erratically, confirm droid is fully charged. If charged and still acting strange, press reset button next to USB charging port with paper clip.

Press and hold power button for 3 seconds to turn D-0 off.

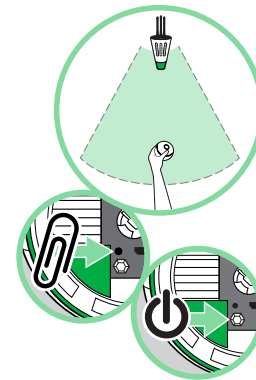
Lay D-0 flat on its side to stop wheel from spinning if needed.

For best results, ensure ball controller and any sound or motion interaction is directly in front of D-0 and within range.

If D-0 is unresponsive or acting erratically, confirm droid is fully charged. If charged and still acting strange, press reset button next to USB charging port with paper clip.

Press and hold power button for 3 seconds to turn D-0 off.

Lay D-0 flat on its side to stop wheel from spinning if needed.



APP CONTROL • APP CONTROL • APP CONTROL • APP CONTROL



1. Download and launch the Ultimate D-0 App.
2. Ensure Bluetooth is enabled in your device's settings.
3. Follow the onscreen instructions to connect and control your droid.

1. Download and launch the Ultimate D-0 App.
2. Ensure Bluetooth is enabled in your device's settings.
3. Follow the onscreen instructions to connect and control your droid.

1. Download and launch the Ultimate D-0 App.
2. Ensure Bluetooth is enabled in your device's settings.
3. Follow the onscreen instructions to connect and control your droid.

1. Download and launch the Ultimate D-0 App.
2. Ensure Bluetooth is enabled in your device's settings.
3. Follow the onscreen instructions to connect and control your droid.

App available through at least 5/1/2021. Check apps.hasbro.com for app availability, compatibility, and update dates. Ask a parent first. App is not guaranteed to be compatible with any future operating systems or devices. Note: Hasbro is only responsible for Hasbro-generated content. Please refer to third party terms and conditions for further information.

App available through at least 5/1/2021. Check apps.hasbro.com for app availability, compatibility, and update dates. Ask a parent first. App is not guaranteed to be compatible with any future operating systems or devices. Note: Hasbro is only responsible for Hasbro-generated content. Please refer to third party terms and conditions for further information.

App available through at least 5/1/2021. Check apps.hasbro.com for app availability, compatibility, and update dates. Ask a parent first. App is not guaranteed to be compatible with any future operating systems or devices. Note: Hasbro is only responsible for Hasbro-generated content. Please refer to third party terms and conditions for further information.

App available through at least 5/1/2021. Check apps.hasbro.com for app availability, compatibility, and update dates. Ask a parent first. App is not guaranteed to be compatible with any future operating systems or devices. Note: Hasbro is only responsible for Hasbro-generated content. Please refer to third party terms and conditions for further information.

FCC STATEMENT

This device complies with Part 15 of the FCC Rules. Operation is subject to the following two conditions: (1) This device may not cause harmful interference, and (2) this device must accept any interference received, including interference that may cause undesired operation.

NOTE: This equipment has been tested and found to comply with the limits for a Class B digital device, pursuant to Part 15 of the FCC Rules. These limits are designed to provide reasonable protection against harmful interference in a residential installation. This equipment generates, uses and can radiate radio frequency energy, and, if not installed and used in accordance with the instructions, may cause harmful interference to radio communications. However, there is no guarantee that interference will not occur in a particular installation. If this equipment does cause harmful interference to radio or television reception, which can be determined by turning the equipment off and on, the user is encouraged to try to correct the interference by one or more of the following measures:

- Reorient or relocate the receiving antenna.
- Increase the separation between the equipment and the receiver.
- Consult the dealer or an experienced radio/TV technician for help.

CAUTION: Changes or modifications to this unit not expressly approved by the party responsible for compliance could void the user's authority to operate the equipment.

CAN ICES-3 (B) / NMB-3 (B)

This device contains license-exempt transmitter(s)/receiver(s) that comply with Innovation, Science and Economic Development Canada's license-exempt RSS(s). Operation is subject to the following two conditions: 1. This device may not cause interference. 2. This device must accept any interference, including interference that may cause undesired operation of the device.



Remote control operates on infrared frequencies; sunlight and some indoor lighting may interfere with communication between controller and droid.

Remote control operates on infrared frequencies; sunlight and some indoor lighting may interfere with communication between controller and droid.

DÉCLARATION DE LA FEDERAL COMMUNICATIONS COMMISSION

Cet équipement est conforme à la Section 15 des règlements de la FCC. Son fonctionnement est soumis aux deux conditions suivantes: [1] Cet équipement ne peut causer d'interférence nuisible; [2] cet équipement doit pouvoir fonctionner même s'il capte de l'interférence, incluant celle pouvant provoquer un fonctionnement indésirable.

NOTE: Cet équipement a été testé et est conforme aux limites d'un instrument numérique de classe B de la Section 15 des règlements de la FCC. Ces limites ont été établies pour assurer une protection raisonnable contre les brouillages préjudiciables dans une installation résidentielle. Cet équipement produit, utilise et peut rayonner des fréquences radioélectriques et, s'il n'est pas monté et utilisé conformément aux instructions, peut créer un brouillage préjudiciable aux radiocommunications. Cependant, ces limites ne garantissent pas qu'il n'y aura pas d'interférence dans une installation particulière. Si ce jouet produit un brouillage préjudiciable aux transmissions télévisuelles ou radiophoniques, ce qui peut se déceler à la mise en marche et à l'arrêt du jouet, l'utilisateur devrait corriger la situation en suivant une ou plusieurs des mesures suivantes:

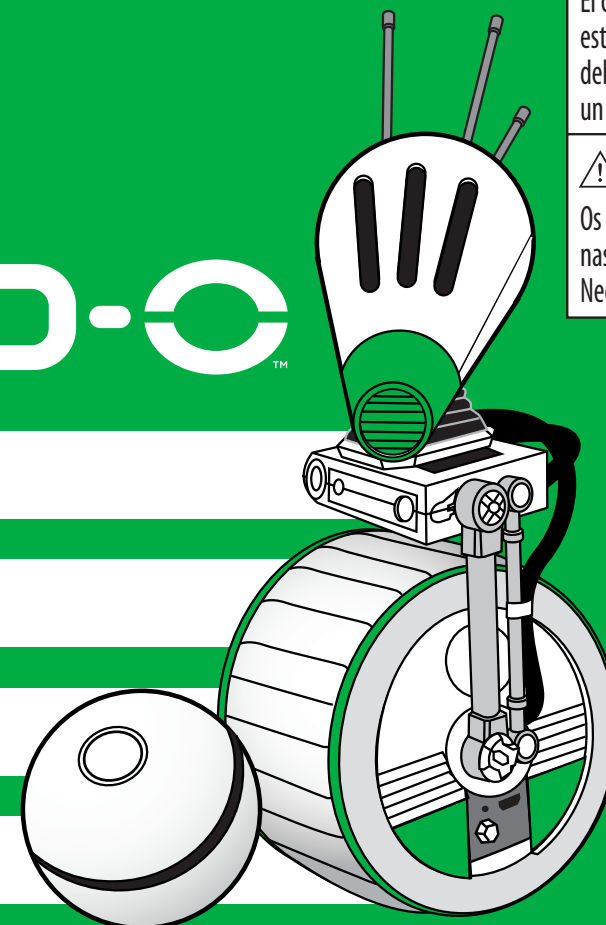
- réorienter ou remplacer l'antenne de réception;
- augmenter la distance entre l'équipement et le récepteur;
- demander l'aide d'un marchand ou d'un technicien en radio et télévision.

ATTENTION: Toute modification ou altération apportée à cet appareil, sans autorisation expresse de la partie responsable de sa conformité, peut révoquer à l'utilisateur son droit de l'utiliser.

L'émetteur/récepteur exempt de licence contenu dans le présent appareil est conforme aux CNR d'Innovation, Sciences et Développement économique Canada applicables aux appareils radio exempts de licence. L'exploitation est autorisée aux deux conditions suivantes : 1. L'appareil ne doit pas produire de brouillage; 2. L'appareil doit accepter tout brouillage radioélectrique subi, même si le brouillage est susceptible d'en compromettre le fonctionnement.

STAR WARS

D-0



AGE • EDAD • IDADE 8+

CAUTION:

Hair entanglement may result if child's hair comes in contact with moving parts of toy. Adult supervision is required.

ATTENTION:

Les cheveux de l'enfant peuvent s'emmêler dans les pièces mobiles du jouet. La surveillance d'un adulte est requise.

PRECAUCIÓN:

El cabello del niño puede enredarse al estar en contacto con las piezas móviles del juguete. Requiere la supervisión de un adulto.

CUIDADO:

Os cabelos das crianças podem se enroscar nas peças em movimento do brinquedo. Necessária a supervisão de um adulto.

PARENTS • PARENTS • PARENTS • PARENTS

STARWARS.COM

STARWARS.HASBRO.COM

Apple, the Apple logo, iPhone, and iPad are trademarks of Apple Inc., registered in the U.S. and other countries. App Store is a service mark of Apple Inc. Google Play and the Google Play logo are trademarks of Google LLC. Bluetooth is a registered trademark of Bluetooth SIG, Inc. © & ™ Lucasfilm Ltd. Hasbro and all related trademarks and logos are trademarks of Hasbro, Inc. Retain this information for future reference. • Conservez cette information pour référence ultérieure. • Conservez esta información para futuras referencias. • Guardar para eventuales consultas. © 2019 Hasbro, Pawtucket, RI 02861-1059 USA, © 2019 Hasbro, HASBRO CANADA, LONGUEUIL, QC, CANADA J4G 1G2. US/CANADA TEL. 1-800-255-5516. © 2019 Hasbro, Centro de Servicio para México: TEL. 5876-2998 y para el interior de la República Tel. 01-800-7-12-62-25. centroserviciomexico@hasbro.com © 2019 Hasbro. Em caso de dúvidas sobre o produto, acesse www.hasbro.com, seção 'Atendimento ao consumidor'.

E7054 PNO0042104

CREATIVE DEVELOPMENT STUDIOS // CREATIVE COMMUNICATIONS					
NAME	Kate Adams	FLAT SIZE / SPREAD	18 x 8.25 in	FOLDS	2
EMAIL	kate.adams@hasbro.com	TRIM SIZE (PDP)	6 x 8.25 in	COLORS	2C : BLK / 354C
				NOTES	4L





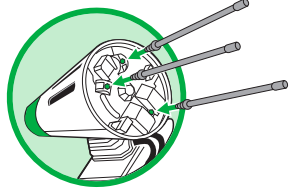
ASSEMBLY • ASSEMBLY ASSEMBLY • ASSEMBLY

Remove antennas from packaging and push into hexagonal holes in head.

Remove antennas from packaging and push into hexagonal holes in head.

Remove antennas from packaging and push into hexagonal holes in head.

Remove antennas from packaging and push into hexagonal holes in head.



CHARGING • CHARGING • CHARGING • CHARGING

x1 3.7V 500mAh LiPo BATTERY INCLUDED. NON-REPLACEABLE.
x1 3.7V 500mAh LiPo BATTERY INCLUDED. NON-REPLACEABLE.
x1 3.7V 500mAh LiPo BATTERY INCLUDED. NON-REPLACEABLE.
x1 3.7V 500mAh LiPo BATTERY INCLUDED. NON-REPLACEABLE.

Place in base securely and insert charging cable into port. Plug into an appropriate power source. Head LEDs indicate charge level. Droid is fully charged when all lights are solid.

Place in base securely and insert charging cable into port. Plug into an appropriate power source. Head LEDs indicate charge level. Droid is fully charged when all lights are solid.

Place in base securely and insert charging cable into port. Plug into an appropriate power source. Head LEDs indicate charge level. Droid is fully charged when all lights are solid.

Place in base securely and insert charging cable into port. Plug into an appropriate power source. Head LEDs indicate charge level. Droid is fully charged when all lights are solid.

INSTALL BATTERIES • INSTALL BATTERIES INSTALL BATTERIES • INSTALL BATTERIES

2 x 1.5V AAA ALKALINE BATTERIES
Use a Phillips/cross head screwdriver (not included).

2 x 1.5V AAA ALKALINE BATTERIES
Use a Phillips/cross head screwdriver (not included).

2 x 1.5V AAA ALKALINE BATTERIES
Use a Phillips/cross head screwdriver (not included).

2 x 1.5V AAA ALKALINE BATTERIES
Use a Phillips/cross head screwdriver (not included).

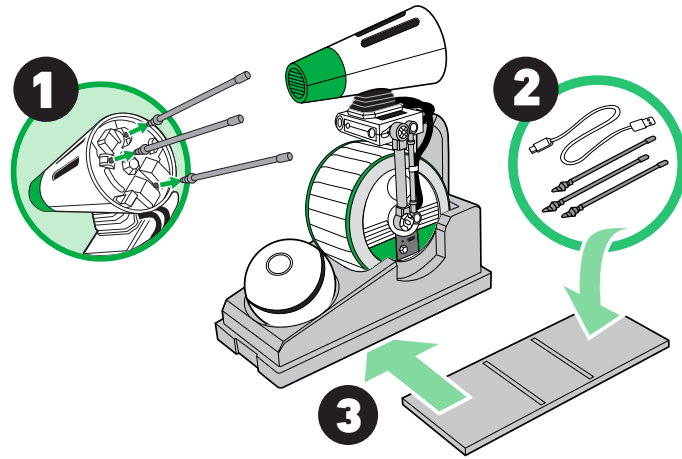
STORAGE • STORAGE • STORAGE • STORAGE

Lid of package attaches to bottom of base and can be used to store antennas and USB cable.

Lid of package attaches to bottom of base and can be used to store antennas and USB cable.

Lid of package attaches to bottom of base and can be used to store antennas and USB cable.

Lid of package attaches to bottom of base and can be used to store antennas and USB cable.



CHARGING • CHARGING • CHARGING • CHARGING

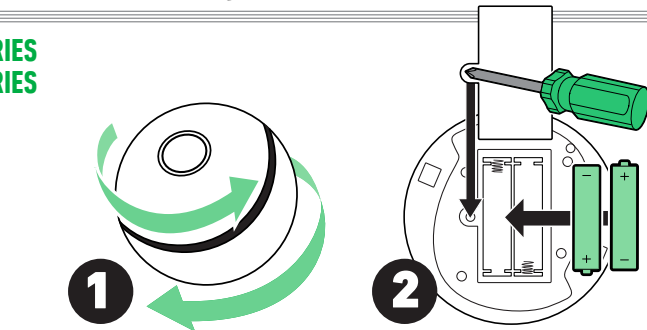
x1 3.7V 500mAh LiPo BATTERY INCLUDED. NON-REPLACEABLE.
x1 3.7V 500mAh LiPo BATTERY INCLUDED. NON-REPLACEABLE.
x1 3.7V 500mAh LiPo BATTERY INCLUDED. NON-REPLACEABLE.
x1 3.7V 500mAh LiPo BATTERY INCLUDED. NON-REPLACEABLE.

Place in base securely and insert charging cable into port. Plug into an appropriate power source. Head LEDs indicate charge level. Droid is fully charged when all lights are solid.

Place in base securely and insert charging cable into port. Plug into an appropriate power source. Head LEDs indicate charge level. Droid is fully charged when all lights are solid.

Place in base securely and insert charging cable into port. Plug into an appropriate power source. Head LEDs indicate charge level. Droid is fully charged when all lights are solid.

Place in base securely and insert charging cable into port. Plug into an appropriate power source. Head LEDs indicate charge level. Droid is fully charged when all lights are solid.



IMPORTANT: RECHARGEABLE BATTERY INFORMATION

⚠️ WARNING:

Risk of fire, explosion, and burns. Do not disassemble, crush, heat above 60 °C (140 °F), or incinerate. Dispose of the whole product according to your local recycling or waste regulations – never disassemble. Do not use the item near a heat source such as a fire or heater.

IMPORTANT: RECHARGEABLE BATTERY INFORMATION

⚠️ WARNING:

Risk of fire, explosion, and burns. Do not disassemble, crush, heat above 60 °C (140 °F), or incinerate. Dispose of the whole product according to your local recycling or waste regulations – never disassemble. Do not use the item near a heat source such as a fire or heater.

IMPORTANT: RECHARGEABLE BATTERY INFORMATION

⚠️ WARNING:

Risk of fire, explosion, and burns. Do not disassemble, crush, heat above 60 °C (140 °F), or incinerate. Dispose of the whole product according to your local recycling or waste regulations – never disassemble. Do not use the item near a heat source such as a fire or heater.

IMPORTANT: RECHARGEABLE BATTERY INFORMATION

⚠️ WARNING:

Risk of fire, explosion, and burns. Do not disassemble, crush, heat above 60 °C (140 °F), or incinerate. Dispose of the whole product according to your local recycling or waste regulations – never disassemble. Do not use the item near a heat source such as a fire or heater.

IMPORTANT: BATTERY INFORMATION CAUTION:

1. As with all small batteries, the batteries used with this product should be kept away from small children who still put things in their mouths. If they are swallowed, promptly see a doctor and have the doctor phone (202) 625-3333 collect. If you reside outside the United States, have the doctor call your local poison control center.

2. TO AVOID BATTERY LEAKAGE

- a. Always follow the instructions carefully. Use only batteries specified and be sure to insert them correctly by matching the + and - polarity markings.
- b. Do not mix old batteries and new batteries or standard (carbon-zinc) with alkaline batteries.
- c. Remove exhausted or dead batteries from the product.
- d. Remove batteries if product is not to be played with for a long time.
- e. Do not short-circuit the supply terminals.
- f. RECHARGEABLE BATTERIES: Do not mix these with any other types of batteries. Always remove from the product before recharging. Recharge batteries under adult supervision. DO NOT RECHARGE OTHER TYPES OF BATTERIES.

3. Should this product cause, or be affected by, local electrical interference, move it away from other electrical equipment. Reset (switching off and back on again or removing and re-inserting batteries) if necessary.

DÉTAILS IMPORTANTS SUR LES PILES ATTENTION:

1. Comme pour toute pile de petite taille, garder celles utilisées avec ce produit hors de la portée des enfants qui portent encore des objets à leur bouche. Si elles sont avalées, se rendre sans tarder chez un médecin et lui demander d'appeler le centre antipoison local.

2. POUR ÉVITER LES RISQUES DE FUITES

- a. Suivre les directives. N'utiliser que les piles recommandées et les insérer en respectant le sens des polarités + et - inscrites sur le produit.
- b. Ne pas utiliser de vieilles piles avec des piles neuves, ni de piles alcalines avec des piles standard au carbone-zinc.

- c. Toujours retirer les piles faibles ou déchargées du produit.
 - d. Retirer les piles si le produit ne sera pas utilisé pendant un certain temps.
 - e. Ne pas court-circuiter les bornes d'alimentation.
 - f. PILES RECHARGEABLES: Ne pas utiliser celles-ci avec d'autres types de piles. Les retirer du produit avant de les recharger sous la surveillance d'un adulte. NE PAS RECHARGER LES AUTRES TYPES DE PILES.
3. Si ce produit provoque de l'interférence ou s'il en est affecté, il faut l'éloigner d'autres appareils électriques et procéder, si nécessaire, à une remise à l'état initial en l'éteignant et en le rallumant, ou encore en retirant et réinsérant ses piles.

INFORMACIÓN IMPORTANTE SOBRE LAS BATERÍAS PRECAUCIÓN:

1. Al igual que con las baterías pequeñas, las baterías incluidas en este producto deben mantenerse fuera del alcance de los niños. Si fueran ingeridas, consulte a un médico inmediatamente.

2. PARA EVITAR QUE LAS BATERÍAS SE DERRAMEN

- a. Siga cuidadosamente las instrucciones. Utilice sólo las baterías recomendadas y colóquelas respetando la polaridad + y - inscrita en el producto.
- b. No mezcle baterías gastadas con baterías nuevas, ni baterías alcalinas con baterías estándar (carbón/zinc).
- c. Retire las baterías débiles o gastadas del producto.
- d. Retire las baterías del producto en caso de que éste quede inactivo por un largo período.
- e. No origine cortocircuitos en los bornes del compartimento de las baterías.
- f. BATERÍAS RECARGABLES: No las combine con otros tipos de baterías. Retírelas siempre del producto antes de recargarlas bajo la supervisión de un adulto. NO RECARGUE OTROS TIPOS DE BATERÍAS.

3. Si el producto provoca interferencias o es afectado por ellas, debe alejarlo de aparatos eléctricos y, si fuera necesario, reinicializarlo encendiéndolo y apagándolo, o bien sacando y reinsertando sus baterías.

IMPORTANTE: INFORMAÇÕES SOBRE AS PILHAS E BATERIAS ATENÇÃO:

1. Siga corretamente as instruções contidas no Manual de Instruções do Produto. Insira corretamente as pilhas e baterias de acordo com as polaridades + ou -. As pilhas e baterias utilizadas nesse produto devem ser mantidas fora do alcance das crianças. Se engolidas, procure atendimento médico imediatamente.

2. Não misture pilhas e baterias novas com pilhas e baterias usadas, ou do tipo carbono-zinco com tipo alcalinas.

3. Não recarregar pilhas e baterias não recarregáveis.

4. Só devem ser utilizadas pilhas e baterias do tipo recomendado ou um similar.

5. As pilhas e baterias descarregadas devem ser retiradas do produto.

6. Atente-se para não causar curto-circuito nos terminais.

7. No caso da não utilização do produto por um longo período, favor remover as pilhas e baterias.

8. No caso deste produto apresentar ou ser afetado por interferência elétrica local, por favor, remova-o de perto de qualquer outro aparelho elétrico. Caso seja necessário, reinicie o aparelho apertando o botão de desligar e ligue-o novamente em seguida, ou, recoloque as pilhas e baterias.

9. PILHAS E BATERIAS RECARREGÁVEIS: Não misture pilhas e baterias recarregáveis com nenhum outro tipo de pilha ou bateria. Remova as pilhas e baterias do produto antes de recarregá-las (se puderem ser retiradas). O processo de recarga deverá ser supervisionado por um adulto.