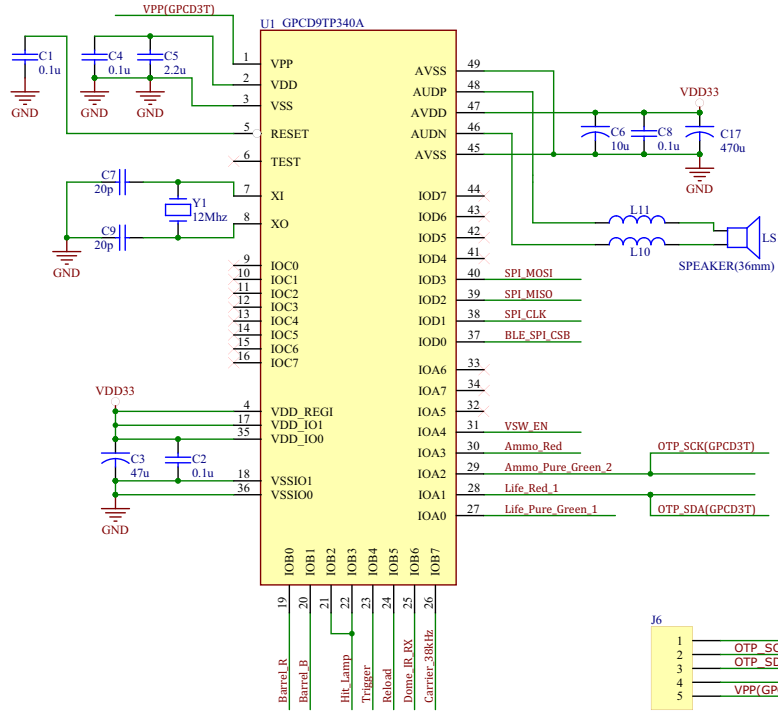


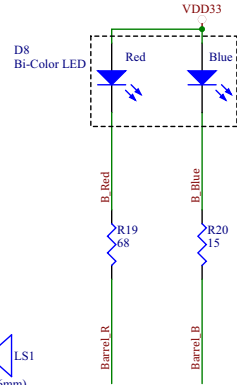
Note:

- 1) All electrolytic capacitors are 16V or above, +/-20% except specified.
- 2) All ceramic capacitors are 12V or above, +/-20% except specified.
- 3) All resistors are +/-5% except specified.
- 4) All diodes are 1N4148 except specified.
- 5) In PCB layout, the traces separation between all VDD and GND should be minimum 2mm.
- 6) The surrounding area of all Fuse/Polyswitch should be free of traces for 4mm.
- 7) The length of wire(V+) between the battery compartment and the PCB containing the PTC/fuse must be less than 2". A secondary PCB for the PTC/fuse may be required to meet this requirement.
- 8) * Means adjusted by factory.

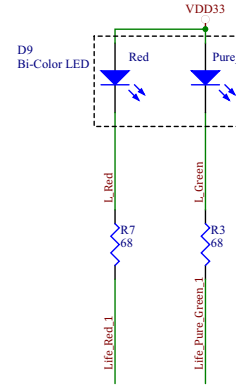
Main



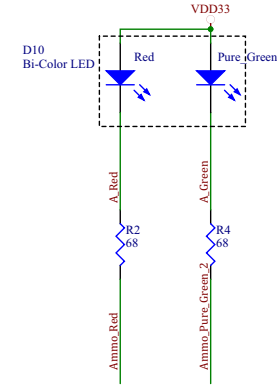
Barrel LED



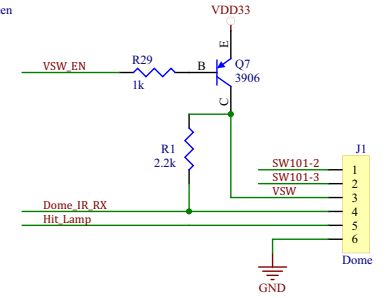
Life LEDs



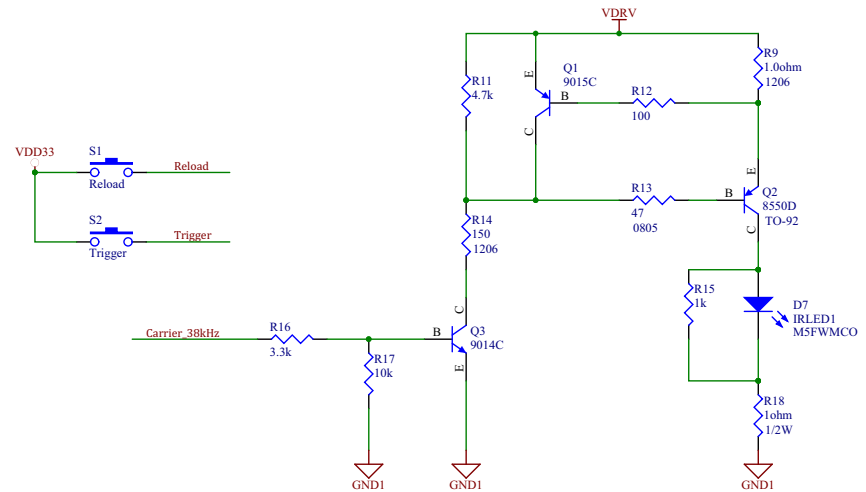
AMMO LEDs



Dome Socket



IR TX Circuit



Product Name: NER VECTOR PISTOL 2PK

Material No.: E2281

Project Code: 352449

DWG No.: S352449

Revision: 04

Sheet 1 of 3

Engineer: Roy/Dan King

Checked by:

Approved by:

HASBRO INC.

Revision History

- R01-First release for quotation
- R02
- R03
- R04

Date

- 2017/06/29
- 2017/07/26
- 2017/09/18
- 2017/11/14

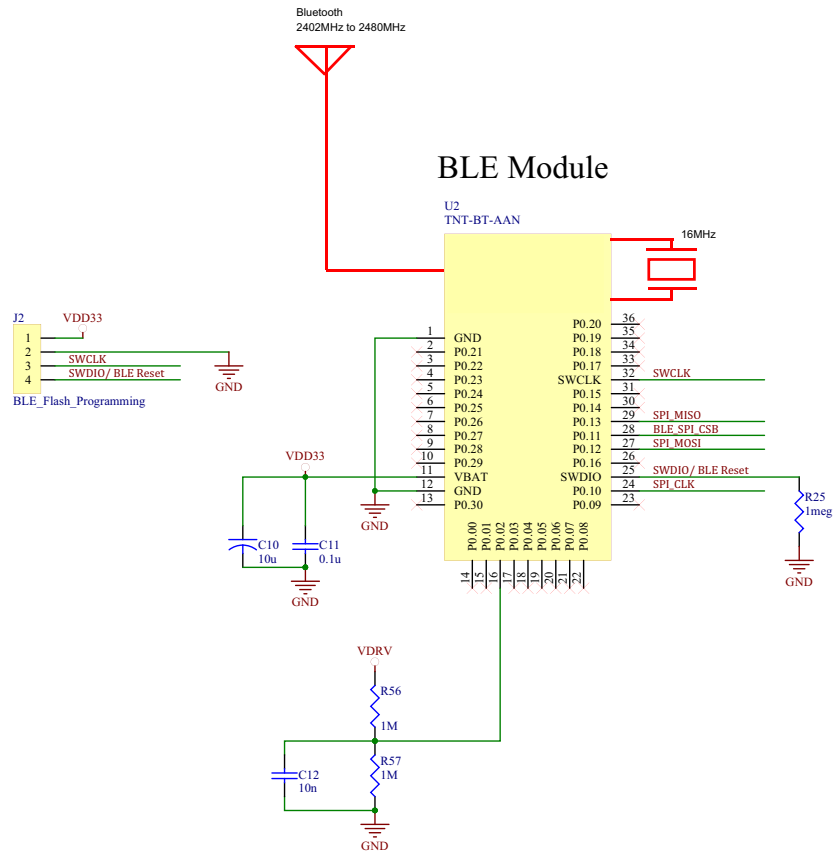
Drawn by

kei

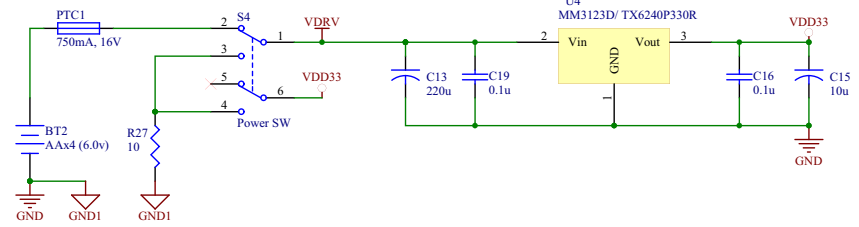


Note:

- 1) All electrolytic capacitors are 16V or above , +/-20% except specified.
- 2) All ceramic capacitors are 12V or above , +/-20% except specified.
- 3) All resistors are +/-5% except specified.
- 4) All diodes are 1N4148 except specified.
- 5) In PCB layout , the traces separation between all VDD and GND should be minimus 2mm.
- 6) The surrounding area of all Fuse/Polyswitch should be free of traces for 4mm.
- 7) The length of wire(V+) between the battery compartment and the PCB containing the PTC/fuse must be less than 2" . A secondary PCB for the PTC/fuse may be required to meet this requirement.
- 8) * Means adjusted by factory.



Power



Product Name: NER VECTOR PISTOL 2PK

Material No.: E2281

Project Code: 352449

DWG No.: S352449

Revision: 04

Sheet 2 **of** 3

Engineer: Roy

Checked by:

Approved by:

HASBRO INC.

Revision History

- R01-First release for quotation
- R02
- R03
- R04

Date

- 2017/06/29
- 2017/07/26
- 2017/09/18
- 2017/11/14

Drawn by

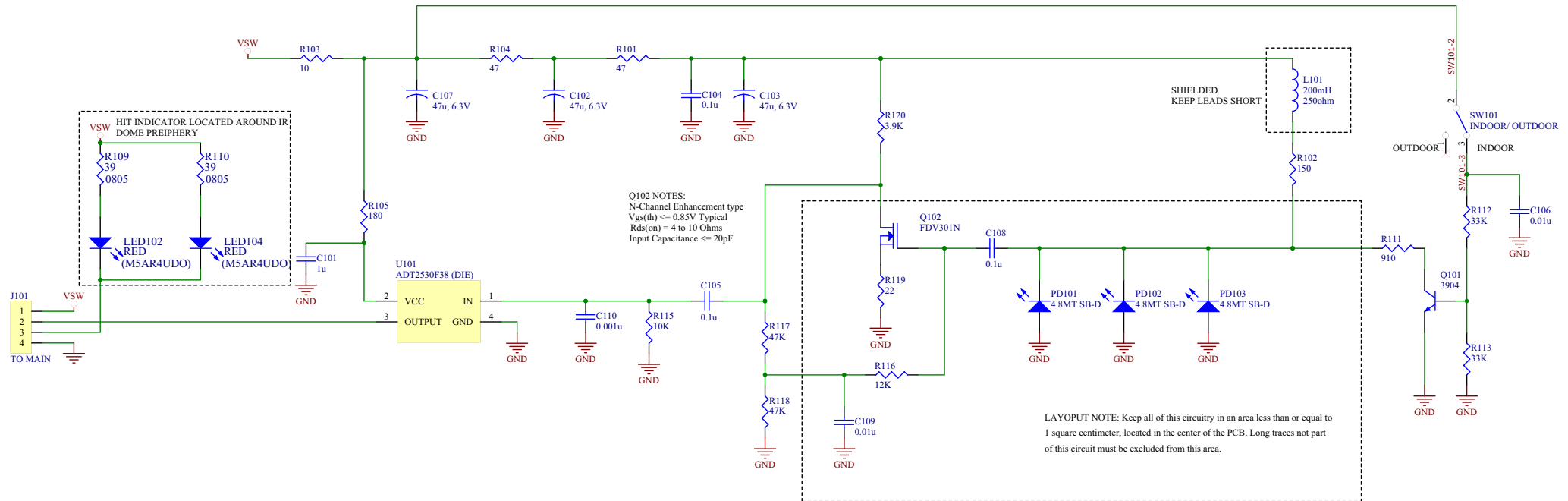
kei



Note:

- 1) All electrolytic capacitors are 16V or above, +/-20% except specified.
- 2) All ceramic capacitors are 12V or above, +/-20% except specified.
- 3) All resistors are +/-5% except specified.
- 4) All diodes are 1N4148 except specified.
- 5) In PCB layout, the traces separation between all VDD and GND should be minimum 2mm.
- 6) The surrounding area of all Fuse/Polyswitch should be free of traces for 4mm.
- 7) The length of wire(V+) between the battery compartment and the PCB containing the PTC/fuse must be less than 2". A secondary PCB for the PTC/fuse may be required to meet this requirement.
- 8) * Means adjusted by factory.

Dome PCB



Product Name: NER VECTOR PISTOL 2PK			Revision History			Date	Drawn by
Material No.: E2281			R01-First release for quotation			2017/06/29	
Project Code: 352449			R02			2017/07/26	
DWG No.: S352449			R03			2017/09/18	
Revision: 04			R04			2017/11/14	
Engineer: Roy	Checked by:	Sheet 3 of 3	Approved by:				
HASBRO INC.							

TNT-BT-AAN

